

# DUO FASTENING PLATE

July 2024

## PRODUCT DESCRIPTION:

This fastening or pressure distribution plate is used in combination with a screw or a nail. It divides the pressure of the fastener over the surface of the waterproofing membrane and / or insulation. This type of fastening plate is used to fix waterproofing membranes and / or insulation on a roof structure of wood, steel or concrete.

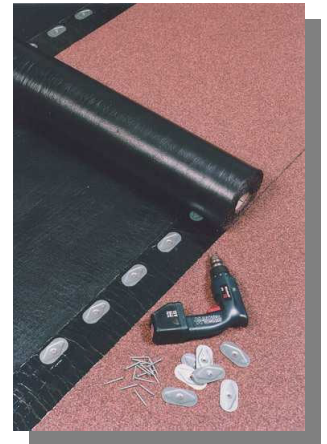
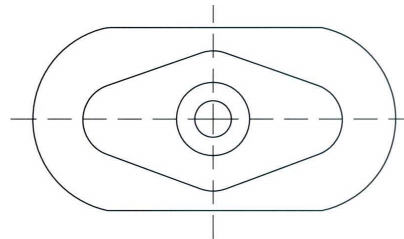
## ADVANTAGES:

- Increases the life-time of the waterproofing system.
- Increases the bonding of the waterproofing to the roof-deck.
- High wind uplift resistance.
- Corrosion resistant.
- Continuous quality.

## PACKAGING:

500 plates/bag

## CHARACTERISTICS:



Material	Aluzinc
Corrosion resistance	Minimum 15 Kesternick cycles (DIN 50018 S2, OL)
Length	80 mm
Width	40 mm
Diameter hole	7 mm
Colour	Metalic
Our reference	DVP-8040N

## INSTALLATION:

A hole is drilled to the right depth into the concrete. The fastening plate with screw and plug are inserted. The screw is tightened. The plate shall not be bent (= too tight) or loose (= not tight enough). The plate is located at the edge of the overlap of the waterproofing membrane as indicated by the waterproofing membrane's manufacturer.

## WARNINGS AND BANS:

Is the building product/building product line subject to warning or ban under section 26 of the Building Act 2004?	No
--	----

## MANUFACTURERS CONTACT DETAILS:

Manufacture location	
Legal and trading name of manufacturer	Soprema New Zealand Limited
Manufacturer address for service	Level 3, Candida Building 4, 61 Constellation Drive, Mairangi Bay, Auckland 0630, New Zealand
Manufacturer website	www.soprema.com.au
Manufacturer email	info@soprema.com.au
Manufacturer phone number	+61 3 9221 6230
Manufacturer NZBN	9429050312962