



# EQUUS SOPREMA COLPHENE BSW TANKING SYSTEM

Standard Building Consent Package



MAY 2026

## CONTENTS

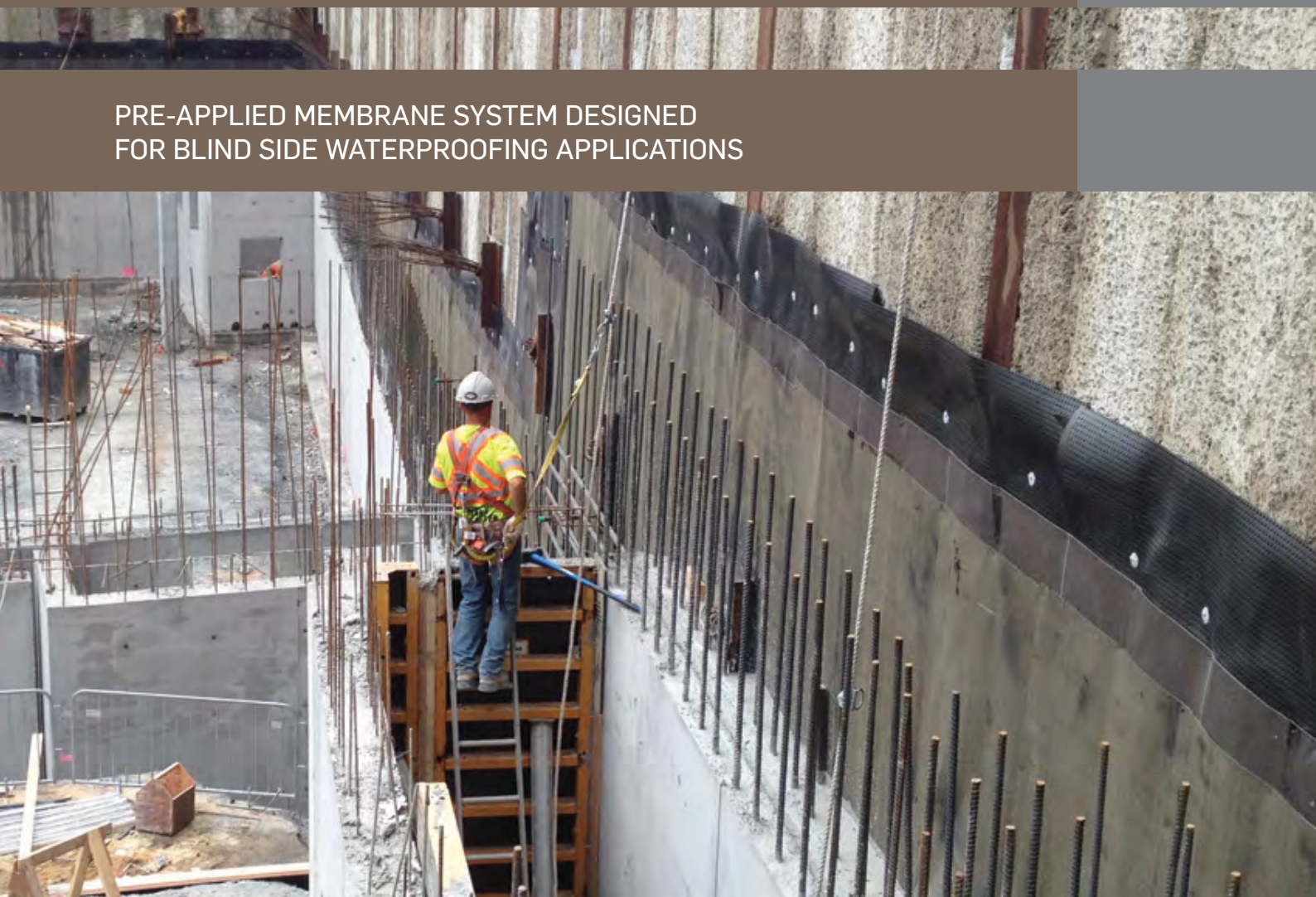
|  |    |
|--|----|
| Brochure                                       | 3  |
| Specifications                                 |    |
| 4131EB Equus Soprema COLPHENE Tanking Membrane | 8  |
| Quality Assurance                              |    |
| P5100 COLPHENE BSW Below Ground Waterproofing  | 15 |
| Compliance                                     |    |
| BRANZ Appraisal No. 1037                       | 18 |
| System Technical Data Sheet                    | 25 |
| Technical Data Sheets                          | 27 |
| Standard Details                               | 49 |



WATERPROOFING

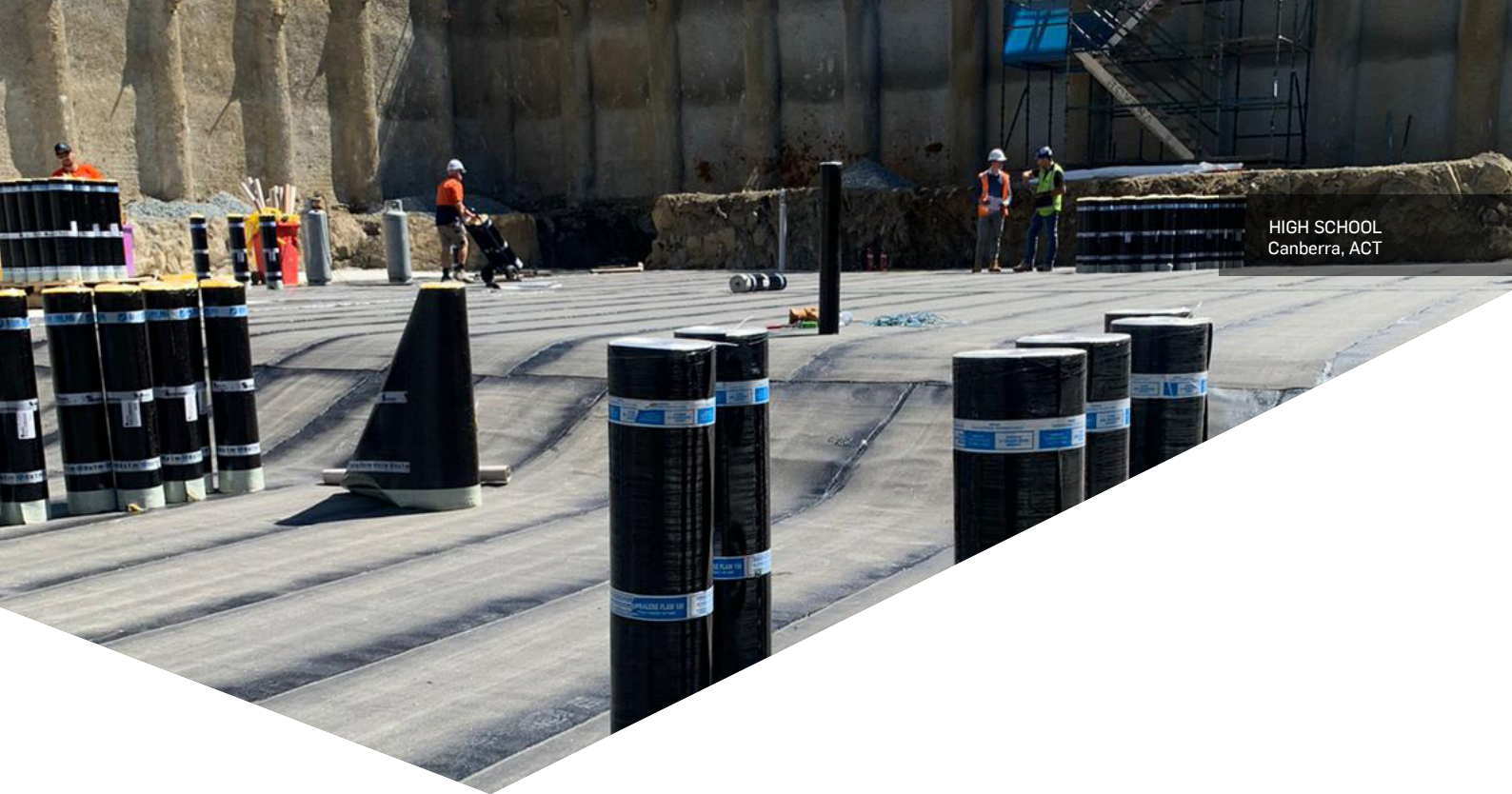
# COLPHENE<sup>®</sup> BSW FOUNDATIONS

PRE-APPLIED MEMBRANE SYSTEM DESIGNED  
FOR BLIND SIDE WATERPROOFING APPLICATIONS



4131EB Equus Soprema  
COLPHENE Tanking Membrane





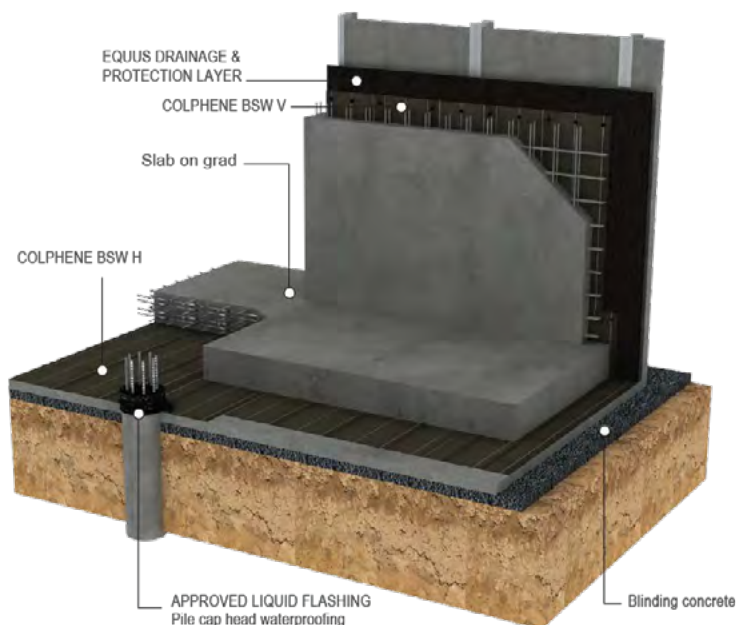
HIGH SCHOOL  
Canberra, ACT

# COLPHENE<sup>®</sup> BSW

## PRE-APPLIED SYSTEM

COLPHENE BSW is a fully reinforced pre-applied membrane system designed for horizontal and vertical external blind side waterproofing applications. With its unique design, it can be used near buildings that limit access and excavation.

The membranes are composed of a select blend of high performance SBS-modified bitumen, an ultra-high-strength reinforcement, and a specially designed surface.



## TESTING AND APPROVALS

SOPREMA's COLPHENE BSW membranes have been tested according to EN and ASTM Standards, and are BRANZ appraised, meeting the requirements of NZBC.



## BENEFITS

- Excellent adhesion to poured concrete
- Increased resistance to hydrostatic pressure
- Superior resistance to tears and punctures
- Increased protection thanks to DUO SELVEDGE technology



# QUALITY

## COLPHENE BSW V

COLPHENE BSW V is designed for vertical blind side waterproofing applications. It is composed of high-performance SBS modified bitumen combined with an ultra-high-strength composite reinforcement. The surface is sanded and the self-adhesive underface is protected with a silicone release film. COLPHENE BSW V features DUO SELVEDGE technology.



## COLPHENE BSW H

COLPHENE BSW H is designed for waterproofing applications under horizontal concrete slabs. It is composed of high-performance SBS modified bitumen and a polyester reinforcement. The surface is sanded and the underface is protected with a thermofusible plastic film. Its unique design, including DUO SELVEDGE technology, allows side laps to be heat-welded using a torch or a heat gun.



### DIMENSIONS

10 x 1 m (33 x 3.3 ft)

### THICKNESSES

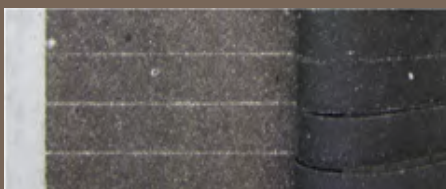
3.0 mm (120 mil)

3.5 mm (140 mil)

### APPLICATION METHOD

Self-adhesive with heat-welded laps

Loose-laid with heat-welded laps



## SUPERIOR ADHESION

The system benefits from the effects of the exothermic reaction that occurs during concrete's curing process, and thus has superior adhesion due to a chemical and mechanical bond between the membrane and structural concrete. It features:

### - CONTINUOUS BOND

Continuous and homogeneous bond to structural concrete

### - ADHESIVE STRENGTH

Excellent adhesion to the poured structural concrete surface according to ASTM D903 standard

The top face of the membrane is made of SBS modified bitumen and covered with sand. The specially formulated surface softens slightly as the concrete begins to cure, releasing heat. This contributes to the adhesion of the membrane to the concrete, and prevents the ingress or migration of water around the structure.



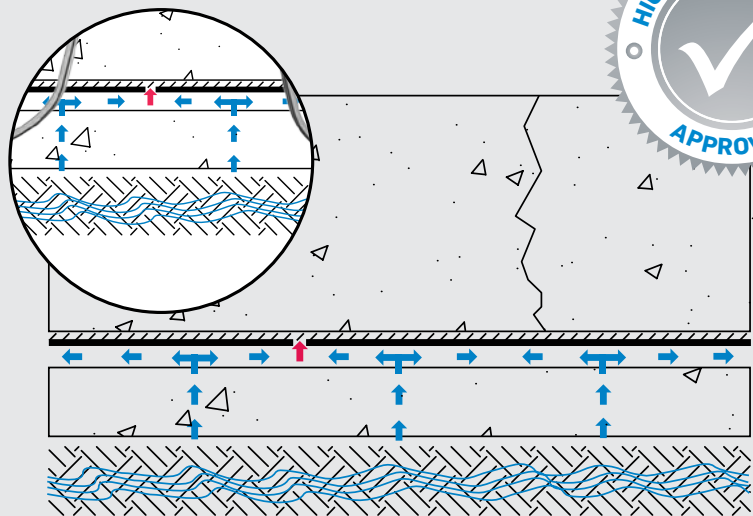
## CONCEPTS



SOPREMA's SOLUTION:

COLPHENE BSW Concept  
(pre-applied membrane system  
that is **fully bonded** to  
the structural concrete)

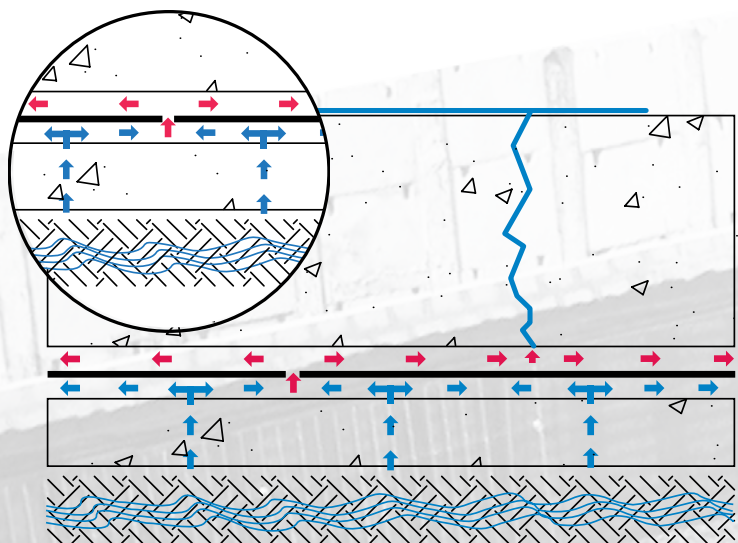
As it is natural for concrete to crack,  
it is important to protect it from  
water infiltration. The technology and  
concept of COLPHENE BSW ensure  
the full adhesion of a waterproofing  
system to the foundation.



OTHER OFFERINGS  
ON THE MARKET:

Concept of a Conventional  
Waterproofing System  
(when **not bonded** to  
the structural concrete)

When there is water migration  
between the waterproofing membrane  
and structural concrete, the structure  
becomes vulnerable, and corrective  
actions are very costly.



## ACCESSORIES



### EQUUS PEEL & STICK PRIMER

Is a rubber based adhesive solvent solution.



### SOPRADERE QUICK PRIMER

Cold applied fast drying primer based on bitumen, solvents and adhesion-improving additives.



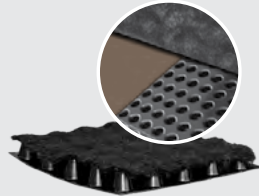
### EASY FLASHING

A thixotropic waterproofing coating, formulated with bitumen in water emulsion, selected elastomeric resins and special additives, multipurpose with high adhesiveness.



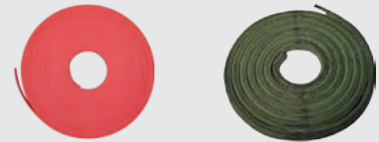
### ALSAN FLASHING QUADRO

Single-component, root resistant polyurethane resin for waterproofing junctions between horizontal surfaces, up-stands and various roof details.



### EQUUS APPROVED DRAINAGE LAYER

High-density drainage panel with a factory-laminated geo-textile. It is used on vertical surfaces before COLPHENE BSW installation.



### AQUAFIN®-CJ6

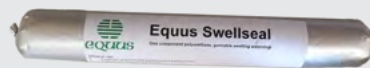
Thermoplastic expansive waterstop for waterproofing construction joints. AQUAFIN®-CJ4

Bentonite joint waterstop with patented rain protection coating.



### ALSAN MASTIC 2200

Flexible mastic based on bitumen and synthetic rubber. Used for sealing small tears, cracks, joints and local repairs.



### SWELLSEAL

Equus Swellseal is a specially formulated, high performance, swellable, single-component, polyurethane based waterstop.



### TERMINATION BAR

A pre-manufactured profile that terminates the waterproofing membrane at the wall in a professional and watertight, wind-peel resistant manner with the addition of 50 mm flange for securing drainage board.

## 4131EB EQUUS SOPREMA COLPHENE TANKING MEMBRANE

### 1 GENERAL

This section relates to the application of Equus Industries Ltd COLPHENE BSW tanking membrane system pre-applied or post-applied to below ground concrete structures and screed protected areas in construction.

It includes:

- waterproof tanking membranes
- components and accessories to complete application

#### 1.1 RELATED WORK

Refer to ~ for ~.

#### 1.2 ABBREVIATIONS AND DEFINITIONS

Refer to the general section 1232 INTERPRETATION & DEFINITIONS for abbreviations and definitions used throughout the specification.

The following abbreviations apply specifically to this section:

SBS                                      Styrene-Butadiene-Styrene

The following definitions apply specifically to this section:

SBS modified                      Modified bitumen (SBS) is an elastomeric additive to bitumen that,  
bitumen                                      when cooled, exhibits rubber-like properties

#### Documents

#### 1.3 DOCUMENTS

Refer to the general section 1233 REFERENCED DOCUMENTS. The following documents are specifically referred to in this section:

[NZBC E2/AS1](#)                      External moisture  
[NZS 3114](#)                              Specification for concrete surface finishes  
[NZS 3604](#)                              Timber-framed buildings

#### 1.4 MANUFACTURER/SUPPLIER DOCUMENTS

Manufacturer's and supplier's documents relating to this part of the work:

Equus Product Technical Data Sheets and Safety Data Sheets  
Equus SOPREMA COLPHENE BSW standard detail drawings  
Equus SOPREMA Quality Assurance (QA) Checklist  
[BRANZ Appraisal 1037](#) COLPHENE BSW TANKING MEMBRANE SYSTEM  
WMAI Code of Practice for Below-Grade Tanking Membranes

Manufacturer/supplier contact details

Company:                      Equus Industries Ltd  
Web:                              [www.equus.nz](http://www.equus.nz)  
Email:                              [info@equus.nz](mailto:info@equus.nz)  
Telephone:                      Northern Branch, Auckland: 09 415 4314  
    Central Branch, Wellington: 04 576 0333  
    Southern Branch, Christchurch: 03 353 2434

#### Warranties

#### 1.5 WARRANTY - MANUFACTURER/SUPPLIER

Provide a material manufacturer/supplier warranty:

20 years                              For Equus SOPREMA COLPHENE BSW and COLPHENE 3000  
    tanking membranes. It includes an appropriate Maintenance  
    Statement.

- Provide this warranty on the Equus Industries Ltd standard form (if unavailable, use the standard form in the general section 1237WA WARRANTY AGREEMENT)
- Commence the warranty from the date of Practical Completion of the contract works.

Refer to the general section 1237 WARRANTIES for additional requirements.

#### 1.6 WARRANTY - INSTALLER/APPLICATOR

Provide an Equus certified applicator warranty:

10 years For application of Equus SOPREMA COLPHENE BSW and COLPHENE 3000 tanking membranes.

- Provide this warranty on the applicator standard form (if unavailable, use the standard form in the general section 1237WA WARRANTY AGREEMENT)
- Commence the warranty from the date of Practical Completion of the contract works.

Refer to the general section 1237 WARRANTIES for additional requirements.

#### Requirements

#### 1.7 NO SUBSTITUTIONS

Substitutions are not permitted to any specified Equus SOPREMA COLPHENE BSW and COLPHENE 3000 tanking membranes or associated components and products.

#### 1.8 QUALIFICATIONS

Waterproofing work to be carried out by approved applicators certified by Equus Industries Ltd. Refer to the general section 1270 CONSTRUCTION for additional requirements relating to qualifications. Contact Equus Industries Ltd for list of approved applicators.

#### 1.9 MAINTENANCE CONTRACT PROPOSAL

Provide a proposed contract for the annual inspection of the tanking membrane by the certified installer, to ensure weather tightness and durability of:

- the top edge of the membrane sheet
- the sheet protection at that top edge
- the subsoil drainage is not blocked and is free draining to an approved outlet
- check all associated building elements that could impact on the durability of the membrane

#### Compliance information

#### 1.10 INFORMATION REQUIRED FOR CODE COMPLIANCE

Provide the following compliance documentation: -

- Applicator's approval certificate from the manufacturer / importer / distributor
- Manufacturer's, importer's or distributors warranty
- Applicator's warranty
- Producer Statement - Construction from the applicator / installer
- Other information required by the BCA in the Building Consent Approval documents.

#### Performance

#### 1.11 PRE-INSTALLATION MEETING

Convene a meeting between the applicator, contractor, all associated consultants and Equus to ensure all parties know what is required for effective performance of the system.

#### 1.12 PROJECT SPECIFIC DETAILS

Where a standard Equus SOPREMA COLPHENE BSW or COLPHENE 3000 detail does not exist, or if a standard detail cannot be applied, an approved alternative must be obtained from Equus before proceeding with the installation.

#### 1.13 PRESSURE RATING

Obtain a written assurance from Equus that the waterproofing system, comprising membrane and jointing methods, is capable of sustaining the designated water pressure head. Refer to SELECTIONS for the designated water pressure head.

#### 1.14 INSPECTIONS AND QUALITY ASSURANCE

Maintain quality control necessary to ensure that work is performed in accordance with this specification and the qualifying requirements of Equus.

## 2 PRODUCTS

**Materials**

- 2.1 COLPHENE BSW H WATERPROOFING TANKING MEMBRANE  
3.5mm thick SBS modified bitumen waterproofing membrane with non-woven polyester reinforcement. Upper surface adheres to in-situ poured concrete and underside is covered with thermofusible plastic film.
- 2.2 COLPHENE BSW V SELF-ADHERED WATERPROOFING TANKING MEMBRANE  
3.0mm thick self-adhesive SBS modified bitumen waterproofing membrane with composite reinforcement. Upper surface adheres to in-situ concrete and underside is covered with silicone release film.
- 2.3 COLPHENE 3000 SELF-ADHERED WATERPROOFING TANKING MEMBRANE  
1.5mm thick self-adhesive SBS modified bitumen waterproofing membrane with tri-laminated woven polyethylene facer. The underside is covered with silicone release film.

**Components**

- 2.4 PRIMER  
Equus Peel and Stick Primer rubber based adhesive primer.
- 2.5 SELF-ADHESIVE REINFORCING STRIP - COLPHENE BSW V  
3.0mm thick self-adhesive SBS modified bitumen waterproofing membrane reinforcing strip for reinforcement of internal and external corners.
- 2.6 SELF-ADHERED REINFORCING STRIP - COLPHENE 3000  
1.5mm thick self-adhesive SBS modified bitumen waterproofing membrane reinforcing strip with tri-laminated woven polyethylene facer for reinforcement of internal and external corners.
- 2.7 LIQUID APPLIED WATERPROOFING MEMBRANE - ALSAN FLASHING  
One-component polyurethane bitumen resin liquid applied waterproofing membrane for detailing of penetrations and other details.
- 2.8 LIQUID APPLIED WATERPROOFING MEMBRANE - MATACRYL THIX  
Viscous, urethane-modified, pre-reacted 100% solid membrane system based on acrylic monomers for detailing of penetrations and other details.
- 2.9 EQUUS BITUMEN ANGLE FILLETS  
Triangular angle fillet of rubber modified bitumen.
- 2.10 LIGHTWEIGHT PROTECTION AND DRAINAGE LAYER  
Equus protection & drainage layer, high density polypropylene nodular sheet with laminated geotextile layer.
- 2.11 EQUUS TERMINATION BAR  
Extruded aluminium profile, 2mm thick x 110mm high x 2.4m long.
- 2.12 EQUUS FIXINGS  
Galvanized screws and pressure plates for mechanical fastening of the waterproofing membrane where required.
- 2.13 SEALANT - ALSAN MASTIC 2200  
Bitumen and synthetic rubber flexible mastic sealant.
- 2.14 SEALANT - SOPRASEAL  
Elastomeric, solvent-free, low VOC moisture cure polyether sealant.

**Accessories**

- 2.15 UNDERSLAB INSULATION  
Equus XPS thermal insulation board. Refer to SELECTIONS.

**3 EXECUTION**

**Conditions****3.1 DELIVERY, STORAGE & HANDLING OF PRODUCTS**

Refer to the general section 1270 CONSTRUCTION for requirements relating to delivery, storage and handling of products. Take delivery of rolls undamaged and include for site handling facilities where required. Store membranes and accessory materials under conditions that ensure no deterioration or damage.

**3.2 ROUTINE MATTERS**

Refer to the general section 1250 TEMPORARY WORKS & SERVICES for protection requirements. Refer to the general section 1270 CONSTRUCTION for requirements relating to defective or damaged work, removal of protection and cleaning.

**3.3 PRE-INSTALLATION REQUIREMENTS**

Check work previously carried out and confirm it is of the required standard for this part of the work.

**3.4 DE-WATERING**

Maintain water level at not less than 300mm below the level of the base concrete during the progress of the tanking work.

**3.5 DRAINAGE**

Install approved drainage system to remove water from foundations. Ensure drain is protected with geotextile cloth to prevent it clogging with fines, and that it is correctly located, 150mm from the membrane and below the footing.

**Application - generally****3.6 GENERALLY**

All work and materials to comply with Equus Industries Ltd installation instructions.

**3.7 WEATHER CONDITIONS**

Install Equus SOPREMA COLPHENE BSW membranes only in fair weather with air temperature above 7°C. Install COLPHENE 3000 membranes only in fair weather with air temperature above 10°C.

**3.8 STANDARDS AND TOLERANCES**

Refer to the general section 1270 CONSTRUCTION for general requirements

**Application Requirements - substrate****3.9 CONCRETE SUBSTRATE - GENERALLY**

Concrete to be finished to [NZS 3114](#), U3 with a light trowel texture with all ridges removed and protrusions ground flush. Finish pile edges and fill tie holes with a non-shrink mortar. Confirm all surfaces are smooth, clean, dry and free from dust, dirt and oil. Equus do not recommend the use of curing compounds; however, when used ensure all traces of compound are gone or removed.

**3.10 TURN UPS**

Where tanking is turned up against hardened concrete, ensure the surface is smooth and free of all sharp projections. Fill internal corners with an Equus bituminous fillet or modified cement mortar or epoxy mortar.

**3.11 TURN DOWNS**

Where tanking is turned over an external corner, first grind the corner to produce a smooth 5mm radius or chamfer.

**3.12 LEAN CONCRETE SUBSTRATE**

Clean lean concrete by brush or air compressor.

**3.13 COMPACTED HARD-FILL SURFACE**

Confirm that the maximum non-specific design of hard-fill is up to 600mm in depth. Ensure granular fill, sand blinding and compaction to comply with the requirements of [NZS 3604](#). Dress off surface of hard-fill with a 15mm layer of fine, clean sand roll-compacted to a smooth surface.

**3.14 REMOVE OTHER FORMWORK**

Ensure that formwork has been removed or partially removed from the other face(s) to the membrane face, to the extent that it allows moisture to escape from the concrete to ensure no vapour pressure develops beneath the membrane.

#### **Application - loose laid under slab waterproofing membrane**

##### 3.15 INSTALL INSULATION

Install Equus XPS insulation boards in brick bond pattern over compacted hard-fill with sand blinding or over lean concrete.

##### 3.16 LOOSE LAY COLPHENE BSW H

Unroll Equus SOPREMA COLPHENE BSW H membrane and align the first roll, loose laid over substrate and cut to length. Lay subsequent rolls ensuring membrane is flat and laps are aligned. Lap roll edges 100mm minimum and end laps 150mm minimum, offset in adjacent runs. Press self-adhesive DUO SELVEDGE laps closed and fully heat weld with gas torch. Take care when placing reinforcing steel to avoid puncture or damage to the membrane.

#### **Application - pre-applied self-adhesive membrane against lost formwork**

##### 3.17 INSTALL INSULATION

Install Equus thermal insulation against the lost formwork before installing the Equus drainage layer. Insulation can be held in place with Equus DOUBLESTICK double-sided tape or Equus SOPREMA fixings.

##### 3.18 INSTALL EQUUS PROTECTION & DRAINAGE LAYER

Fix Equus drainage layer to the lost formwork with the geotextile layer facing the formwork, using Equus SOPREMA fixings.

##### 3.19 INSTALL SELF-ADHERED COLPHENE BSW V

Remove silicone backing and apply COLPHENE BSW V self-adhesive membrane to drainage layer with edge laps 100mm minimum and end laps 150mm minimum, offset in adjacent runs. Seal laps and mechanically fix membrane at the top to secure during concrete installation.

#### **Application - post-applied self-adhered membrane on concrete or masonry walls**

##### 3.20 APPLY PRIMER

Apply Equus Peel and Stick Primer evenly at a spreading rate of 6 to 8 m<sup>2</sup>/litre to all vertical wall surfaces to which self-adhered membrane is to be adhered to. Allow to dry for minimum 1 hour depending upon prevailing weather conditions.

##### 3.21 REINFORCE CORNERS - COLPHENE BSW V

Reinforce internal and external corners to vertical areas with a self-adhered strip of COLPHENE BSW V membrane.

##### 3.22 REINFORCE CORNERS – COLPHENE 3000

Reinforce internal and external corners to vertical areas with a self-adhered strip of COLPHENE 3000 membrane.

##### 3.23 INSTALL SELF-ADHERED COLPHENE BSW V

Remove silicone backing and apply a reinforcing strip of COLPHENE BSW V self-adhesive membrane at the connection between the vertical COLPHENE BSW V membrane and the horizontal COLPHENE BSW H membrane, fully pressing in place. Apply COLPHENE BSW V vertically aligned to wall, pressing evenly and using a soft broom or roller to prevent trapped air bubbles. Lap roll edges 100mm minimum and end laps 150mm minimum, offset in adjacent runs. Press laps closed and fully heat weld with gas torch or hot air gun.

##### 3.24 INSTALL SELF-ADHERED COLPHENE 3000

Remove silicone backing and apply a reinforcing strip of COLPHENE 3000 self-adhesive membrane at the connection between the vertical COLPHENE 3000 membrane and the horizontal COLPHENE BSW H membrane, fully pressing in place. Apply COLPHENE 3000 vertically aligned to wall, pressing evenly and using a soft broom or roller to prevent trapped air bubbles. Lap roll edges 100mm minimum and end laps 150mm minimum, offset in adjacent runs. Press laps closed and fully heat weld with gas torch or hot air gun.

##### 3.25 INSTALL INSULATION

Install Equus XPS insulation boards against membrane, fixed using dots of Equus DOUBLESTICK double-sided tape.

#### **Application - detailing & membrane termination**

##### 3.26 DETAILING

All detailing including outlets and pipe penetrations to be in accordance with Equus technical literature and detail drawings using ALSAN FLASHING or MATACRYL THIX. Seal membrane edges and termination bars using ALSAN MASTIC 2200 or SOPRASEAL.

#### **Application - protection and backfilling**

##### 3.27 QUALITY ASSURANCE (QA) & QUALITY CONTROL

As sections of the tanking are completed, arrange for inspection of the work before covering with protective sheets, walls, slabs or back fill. Complete Equus QA Checklist and return to Equus Industries Ltd for warranty purposes.

##### 3.28 INSTALL EQUUS PROTECTION & DRAINAGE LAYER TO VERTICAL MEMBRANE

Protect the vertical tanking from damage by abrasive materials, expansive soils and during back filling by installing Equus protection and drainage layer. Secure drainage layer in place using Equus termination bar and ALSAN MASTIC 2200 sealant to spot stick the drainage layer to the membrane and seal top of the termination bar.

##### 3.29 PROTECT HORIZONTAL MEMBRANE

After laying is complete the membrane can be protected until the floor slab is poured by covering the tanking with a 50mm layer of 15MPa blinding concrete or compressed cement fibre sheets or similar protective boards suitable for the intended purpose or weight of traffic. This situation arises when there is an extended delay between the membrane installation and the placement of the floor slab or where vehicles and other construction machinery are being taken over the membrane. Remove protective boards prior to placement of reinforcement steel and concrete pour.

##### 3.30 BACKFILLING

Provide a drain coil with a minimum diameter of 100mm (incorporating a filter material) to the base of the foundation. The outlet must discharge to an approved outlet. Install to [NZBC E2/AS1](#). Place free draining granular backfill behind the tanked wall and around the drain coil. An impervious top coating is required above the free draining granular backfill to manage the surface water away from the building with a minimum fall of 1:30.

#### **Application - Repairs**

##### 3.31 REPAIRS TO DAMAGED AREAS

Heat weld a piece of COLPHENE BSW H of suitable size to cover the damaged area with a minimum overlap of 130mm on all sides on the exterior surface.

NOTE: Contractor to notify the waterproofing applicator if any damage occurs.

#### **Completion**

##### 3.32 COMPLETION MATTERS

Refer to 1270 CONSTRUCTION for completion requirements and if required commissioning requirements.

## **4 SELECTIONS**

For further details on selections go to [www.equus.nz](http://www.equus.nz).

Substitutions are not permitted to the following Equus product, unless stated otherwise.

### 4.1 PRESSURE RATING

Designated water pressure head: ~ metres

#### **Tanking waterproofing membrane**

### 4.2

COLPHENE BSW H WATERPROOFING MEMBRANE - LOOSE-LAID APPLICATION UNDER FLOOR SLAB

Location: ~  
Supplier: Equus  
Brand: SOPREMA COLPHENE BSW H  
Thickness: 3.5mm  
Insulation: ~

## 4.3

## COLPHENE BSW V SELF-ADHESIVE WATERPROOFING MEMBRANE - PRE-APPLIED TO LOST WALL FORMWORK

Location: ~  
Supplier: Equus  
Brand: SOPREMA COLPHENE BSW V  
Thickness: 3.0mm  
Protection Board: Equus protection & drainage layer  
Insulation: ~

## 4.4

## COLPHENE BSW V SELF-ADHESIVE WATERPROOFING MEMBRANE - POST-APPLIED TO WALL

Location: ~  
Supplier: Equus  
Brand: SOPREMA COLPHENE BSW V  
Thickness: 3.0mm  
Primer: Equus Peel and Stick Primer  
Reinforcement strip: SOPREMA COLPHENE BSW V  
Protection Board: Equus protection & drainage layer  
Insulation: ~

## 4.5

## COLPHENE 3000 SELF-ADHESIVE WATERPROOFING MEMBRANE - POST-APPLIED TO WALL

Location: ~  
Supplier: Equus  
Brand: SOPREMA COLPHENE 3000  
Thickness: 3.0mm  
Primer: Equus Peel and Stick Primer  
Reinforcement strip: SOPREMA COLPHENE 3000  
Protection Board: Equus protection & drainage layer  
Insulation: ~

**Detailing**

## 4.6

## LIQUID APPLIED MEMBRANE

Location: All detailing including outlets and pipe penetrations  
Supplier: Equus  
Brand: ~

## 4.7

## SEALANT

Location: Detailing membrane edges and termination bars  
Supplier: Equus  
Brand: ~





|                   |
|-------------------|
| QUALITY ASSURANCE |
| 3 Pages           |

# EQUUS SOPREMA COLPHENE BSW

## Below-ground single layer waterproofing

November 2025

### 4. CHECKLIST AND METHOD STATEMENT

\* Denotes those processes which must be signed off by the Building Contractor as well.

|     | Process   | Completed On | Building Contractor | Equus Contractor | Notes |
|-----|---|--------------|---------------------|------------------|-------|
| 1.  | Concrete and other surfaces satisfactory for installation of <b>COLPHENE BSW</b> by Equus Certified Applicator.   |              |                     |                  |       |
| 2.  | Loose-lay <b>COLPHENE BSW H</b> to lift pits. Ensure sheet joints are closed using <b>DUO SELVEDGE</b> lap technology (over thermal insulation where required).   |              |                     |                  |       |
| 3.  | Ensure all pile caps, beams, piles, and pillar caps are reinforced with a strip of <b>COLPHENE BSW H</b> over <b>SOPRADERE QUICK</b> Primer.  |              |                     |                  |       |
| 4.  | Install thermal insulation where required in a brick bond pattern.  |              |                     |                  |       |
| 5.  | <b>HORIZONTAL:</b> Loose lay <b>COLPHENE BSW H</b> to fit inside the formwork, compacted hardfill covered with sand or site concrete with sanded surface facing upwards.  |              |                     |                  |       |
| 6.  | <b>HORIZONTAL:</b> Sheet joints are closed using <b>DUO SELVEDGE</b> lap with a minimum 100mm ensure all are well sealed. Minimum end laps shall be 150mm   |              |                     |                  |       |
| 7.  | Any details shall be carried out using <b>ALSAN FLASHING</b> or other approved liquid membrane.   |              |                     |                  |       |
| 8.  | <b>VERTICAL PRE-APPLIED</b> against lost formwork: Install drainage layer within mechanical fixings and apply <b>COLPHENE BSW V</b> to the drainage layer. (Where thermal-insulation is required, install against lost formwork before drainage layer. Held in place with <b>DOUBLESTICK</b> tape or <b>EQUUS SOPREMA</b> Fixings.) |              |                     |                  |       |
| 9.  | <b>VERTICAL PRE-APPLIED</b> against lost formwork: Sheet joints are closed using <b>DUO SELVEDGE</b> lap with a minimum 100mm ensure all are well sealed by torch or hot air.   |              |                     |                  |       |
| 10. | <b>VERTICAL POST-APPLIED:</b> Install <b>COLPHENE BSW H</b> (for torched on applications) or <b>COLPHENE BSW V</b> (for self-adhered applications) reinforcement strip in all internal and external corners, connections between the floor and wall and all cold joints.  |              |                     |                  |       |
| 11. | <b>VERTICAL POST-APPLIED:</b> Install the <b>COLPHENE BSW H</b> (for torched on applications) or <b>COLPHENE BSW V</b> (for self-adhered applications) membrane against the wall.   |              |                     |                  |       |
| 12. | <b>VERTICAL POST-APPLIED:</b> Sheet joints are closed using <b>DUO SELVEDGE</b> lap with a minimum 100mm ensure all are well sealed with torch or (BSW V only) hot air.   |              |                     |                  |       |



|                   |
|-------------------|
| QUALITY ASSURANCE |
| 3 Pages           |

# EQUUS SOPREMA COLPHENE BSW

## Below-ground single layer waterproofing

November 2025

**4. CHECKLIST AND METHOD STATEMENT (continued)**

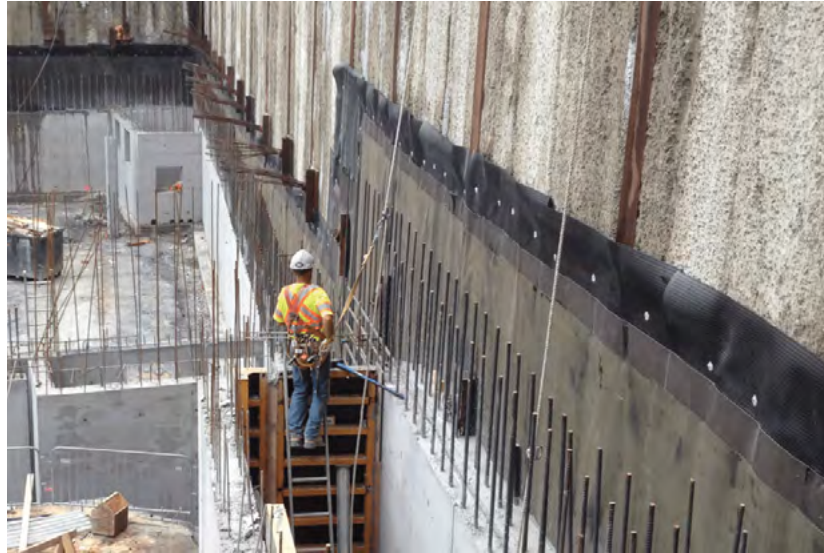
\* Denotes those processes which must be signed off by the Building Contractor as well.

|      | Process  | Completed On | Building Contractor | Equus Contractor | Notes |
|------|--|--------------|---------------------|------------------|-------|
| 13.  | <b>VERTICAL POST APPLIED (Alternative options for areas with low risk of hydrostatic water pressure up to 3m deep):</b><br>Install a <b>COLPHENE 3000</b> self-adhesive reinforcement strip in all internal and external corners and connections between the floor and wall. Followed by application of <b>COLPHENE 3000</b> self-adhered to the wall. Hot air is used to ensure laps are well sealed. |              |                     |                  |       |
| 14.  | Any details shall be carried out using <b>ALSAN FLASHING</b> or <b>MATACRYL THIX</b> .   |              |                     |                  |       |
| 15.  | Install vertical Equus Thermal Insulation against <b>COLPHENE</b> membrane, held in place by dots of <b>DOUBLESTICK</b> tape.  |              |                     |                  |       |
| 16.  | Install <b>Equus drainage layer</b> against vertical <b>COLPHENE</b> membrane, and secure with <b>Equus Termination Bar</b> and sealant.   |              |                     |                  |       |
| 17.  | Installation of Steel work by others.  |              |                     |                  |       |
| 18.  | Areas that have been perforated or damaged to be repaired by heat welding a piece of <b>COLPHENE BSW H</b> including a minimum 150mm overlap.  |              |                     |                  |       |
| 19.* | Concrete pour by others.   |              |                     |                  |       |
| 20.  | Precast panels or blockwork stood by others.   |              |                     |                  |       |
| 21.  | Waterstops placed where required. Cold joins and stitch joins.   |              |                     |                  |       |
| 22.  | Any loose areas on the upper edge of the membrane can be torched into place or sealed with the Equus Termination Bar and bead of <b>ALSAN MASTIC 2200</b> sealant.   |              |                     |                  |       |
| 23.* | System to be inspected on completion.  |              |                     |                  |       |

Equus Industries Ltd. 4 Sheffield St, Blenheim 7274 | Phone: 03 578 0214 | Email: info@equus.co.nz | Web: www.equus.nz

**BRANZ Appraised**

Appraisal No. 1037 [2023]

**COLPHENE BSW  
TANKING MEMBRANE  
SYSTEM***[previously known as  
DeboFlex 3.5 CS/F K180 Special]***Appraisal No. 1037 [2023]**This Appraisal replaces BRANZ  
Appraisal No. 1037 [2018]**BRANZ Appraisals**Technical Assessments of  
products for building and  
construction.**Soprema NV**

Belgium

Web: [www.soprema.com.au](http://www.soprema.com.au)**Marketed by:****Equus Industries Ltd**

Auckland: 09 415 4314

Wellington: 04 576 0333

Christchurch: 03 353 2434

Web: [www.equus.nz](http://www.equus.nz)**BRANZ****BRANZ**

1222 Moonshine Rd,

RD1, Porirua 5381

Private Bag 50 908

Porirua 5240,

New Zealand

Tel: 04 237 1170

[branz.co.nz](http://branz.co.nz)**Product**

- 1.1 Colphene BSW Tanking Membrane System incorporates pre-applied, torch-applied or self-adhered tanking membranes for basement retaining walls and floors. The membranes are applied under floor slabs and foundations and to the exterior face of basement retaining walls to prevent liquid water or water vapour penetrating to the interior face in spaces where moisture may cause damage.

**Scope**

- 2.1 Colphene BSW Tanking Membrane System has been appraised for use as a damp-proof membrane [DPM] within the following scope:
  - on buildings subject to non-specific design under floor slabs complying with NZS 3604 and behind concrete masonry basement walls and under floor slabs complying with NZS 4229; and,
  - in buildings subject to specific design with substrates of in-situ or precast concrete complying with NZS 3101 or concrete masonry complying with NZS 4230 and NZS 4210; and,
  - where subsoil drainage and free draining granular backfill has been placed behind basement walls.
- 2.2 Colphene BSW Tanking Membrane System has also been appraised for use as a pre-applied tanking membrane within the following scope:
  - on buildings subject to specific design with substrates of in-situ or precast concrete complying with NZS 3101; and,
  - where the membrane is subject to hydrostatic pressure with the pressure not to exceed 2 bar [20 metres head of water].
- 2.3 Colphene BSW Tanking Membrane System must be adequately protected against damage during backfilling and in service.
- 2.4 The system must be installed by Equus Industries Ltd certified applicators.



BRANZ Appraisal  
Appraisal No. 1037 [2023]  
06 December 2023

COLPHENE BSW TANKING MEMBRANE  
SYSTEM

## Building Regulations

### New Zealand Building Code (NZBC)

3.1 In the opinion of BRANZ, Colphene BSW Tanking Membrane System, if designed, used, installed and maintained in accordance with the statements and conditions of this Appraisal, will meet the following provisions of the NZBC:

**Clause B2 DURABILITY:** Performance B2.3.1 [a] not less than 50 years. Colphene BSW Tanking Membrane System meets this requirement. See Paragraph 11.1.

**Clause E2 EXTERNAL MOISTURE:** Performance E2.3.3. Colphene BSW Tanking Membrane System meets this requirement. See Paragraphs 13.1–13.3.

**Clause F2 HAZARDOUS BUILDING MATERIALS:** Performance F2.3.1. Colphene BSW Tanking Membrane System meets this requirement.

## Technical Specification

4.1 Materials supplied by Equus Industries Ltd are as follows:

- **Colphene BSW H** is a pre-applied, torch on, SBS-modified bitumen-based membrane. It is supplied in a roll 3.5 mm thick, 1 m wide and 10 m long.
- **Colphene Self-Adhesive** is a post-applied SBS-modified bitumen-based membrane combined with a tri-laminated woven polyethylene facer or cross laminated HDPE film. It is 1.5 mm thick, 1 m wide and 18.7 m long.
- **Colphene BSW V** is a pre-applied or post-applied SBS-modified bitumen-based membrane. It is supplied in a roll 3 mm thick, 1 m wide and 10 m long.
- **Sopradere Quick** is a solvent-based bituminous varnish used to prime dry and porous substrates. It is supplied in 25 L containers.
- **Alsan Mastic 2200** is a black bituminous sealant with permanent flexibility to seal penetrations, terminations and other details. It is supplied as a black paste in 310 ml cartridges.
- **Soprema drainage layer (SOPRADRAIN/DRENTEx)** is a drainage and filter layer used to protect the membrane prior to backfill. It is supplied in rolls 7.3 mm thick, 2.1 m wide and 20 m long.
- **Aquafin®-2 K/M** is a two-component waterproofing coating used for detailing the top edge termination of the Colphene membrane above ground. It is supplied as Part A [powder] and Part B [polymer].
- **Matacryl® Manual** is a highly elastic, heavy duty seamless waterproofing membrane used for detailing the top edge termination of the Colphene membrane above ground. It is supplied in 30 kg units.
- **Aquadere Stick** is a water-based bitumen varnish. It is used to prime dry and porous substrates. It is supplied in 25 L containers.
- **Equus Peel & Stick Primer** is a rubber-based adhesive to adhere self-adhesive waterproofing membranes.
- **Alsan Flashing** is a single-component, polyurethane and bitumen-based waterproofing coating for sealing around penetrations and terminations.
- **Bitumen Angle Fillets** are pre-manufactured triangular angle fillets used between horizontal vertical transitions.
- **Shrink Sleeves** are PVC accessories for sealing penetrations. They are supplied in various diameters from 18 mm to 128 mm.
- **Danodren H15 Plus** is a nodular sheet composed of high density polyethylene (HDPE) and joined to a non-woven geotextile of calendared polypropylene used as a drainage and protection for the Colphene membrane. It is supplied in rolls 20 m long and 2.1 m wide.
- **Alsan Flashing Quadro** is a single-component, root-resistant polyurethane resin used in combination with Alsan Fleece reinforcement for detailing where root resistance is required.



**BRANZ Appraisal**  
Appraisal No. 1037 [2023]  
06 December 2023

COLPHENE BSW TANKING MEMBRANE  
SYSTEM

## Handling and Storage

- 5.1 Handling and storage of all materials, whether on-site or off-site, is under the control of the installer. Dry storage must be provided for all products and the membranes must be protected from sunlight and ultraviolet (UV) radiation. Rolls of membrane must be stored on end.

## Technical Literature

- 6.1 This Appraisal must be read in conjunction with:
- Technical Literature for Colphene BSW Tanking Membrane: Soprema Foundation Guide Bituminous Membranes – 2021 edition.
- 6.2 All aspects of design, use, installation and maintenance contained in the Technical Literature and within the scope of this Appraisal must be followed.

## Design Information

### General

- 7.1 Colphene BSW Tanking Membrane System incorporates waterproofing membranes that can be pre-applied or post-applied.

### Substrate Design - Pre-Applied Tanking and DPM

- 8.1 Colphene BSW Tanking Membranes are pre-applied to surfaces before fixing of reinforcing steel and before concreting. For floors, the membrane is applied to site concrete. For walls, it is applied to either permanent formwork or removable double-faced formwork.

### Substrate Design - Post-Applied Tanking and DPM

#### Walls

- 9.1 Substrate design must be in accordance with the NZBC to a relevant standard, such as NZS 3101 for concrete, and NZS 4229 or NZS 4230 for concrete masonry.
- 9.2 The substrate must have a surface finish that is smooth, clean and free from defects or irregularities which may damage the membrane or allow water to trap behind the membrane.

#### Control Joints

- 9.3 Where control or construction joints are formed in the substrate, Equus Industries Ltd must be consulted for use of the membrane over these joints.

#### Concrete Slab-on-ground

- 9.4 The membrane must be laid on a minimum of 75 mm thickness of site concrete or well compacted sand. The structural concrete slab placed over the membranes must be a minimum of 100 mm thick.

## Backfilling and Drainage

- 10.1 The membranes must be protected against damage by the placement of a protection material between the membrane and the granular fill.
- 10.2 The minimum requirement for backfilling is that a granular, free-draining material is used with the top of the backfill capped with an impervious clay fill that may be covered with topsoil if required. The impervious capping and topsoil must slope away from the wall.
- 10.3 A minimum 100 mm diameter subsoil perforated drainage pipe must be installed at the bottom of the wall. The pipe must be covered with a geotextile filter fabric, be laid at a minimum 1:200 fall and discharge to a drainage outlet. Provision for cleaning the pipe must also be provided.
- 10.4 Backfilling should begin as soon as possible.
- 10.5 Colphene BSW Tanking Membranes can also be pre-applied DPM/tanking membranes on specifically designed substrates. When the pre-applied option is used, there is no backfilling required.



**BRANZ Appraisal**  
Appraisal No. 1037 [2023]  
06 December 2023

COLPHENE BSW TANKING MEMBRANE  
SYSTEM

## Durability

### Serviceable Life

- 11.1 The Colphene BSW Tanking Membrane System is expected to have a serviceable life of at least 50 years provided it is installed and maintained in accordance with this Appraisal and continually protected from sunlight and UV radiation.

## Maintenance

- 12.1 Annual inspections must be made of the membranes' top edge seal and protection, the backfill capping, and the drainage pipe, to ensure all are functioning as originally designed.
- 12.2 If required, the drainage pipe must be cleared to remove any sediment or silt build-up. The slope of the backfill capping must be maintained at all times.

## External Moisture

- 13.1 The Colphene BSW Tanking Membrane System, when installed in accordance with this Appraisal and the Technical Literature, will prevent water vapour [DPM] and water [tanking] from penetrating to the interior face of basement retaining walls and floors in spaces where moisture may cause damage. The membranes have a vapour flow resistance of not less than 90 MN s/g.
- 13.2 The membranes can be used to form sealed joints and to seal penetrations. The top edge of the membrane must be sealed to the wall as set out in the Technical Literature and protected.
- 13.3 Building designers must ensure junctions with other membranes, such as at the floor/wall junction, form a waterproof joint. These junctions have not been assessed and are outside the scope of this Appraisal.

## Installation Information

### Installation Skill Level Requirement

- 14.1 All design and building work must be carried out in accordance with the Colphene BSW Tanking Membrane System Technical Literature and this Appraisal. All building work must be undertaken by Equus Industries Ltd certified applicators. Where the work involves Restricted Building Work this must also be completed by, or under the supervision of, a Licensed Building Practitioner [LBP] with the relevant License Class.

### System Installation – Post-Applied

#### Substrate Preparation

- 15.1 All vertical surfaces must be checked to ensure they are dry, clean, smooth and free from sharp edges, loose or foreign materials, oil, grease or other deleterious material that may affect adhesion or may damage the membranes.

#### Priming

- 15.2 All substrates must be primed before application of the membranes. The supplier of the membranes, Equus Industries Ltd, should be contacted to confirm the most suitable primer. Application instructions for the primers are contained in the technical data sheets.

#### Membrane Installation – Walls

- 15.3 Starting at the lowest point, the membrane must be installed in accordance with the Technical Literature. Sheet edges must be overlapped a minimum of 100 mm. End laps must be a minimum of 200 mm, with upper sheets lapped over lower sheets. Internal and external corners must be reinforced with an extra layer of membrane 300 mm wide. Protection material must be installed before backfilling. Backfilling must commence immediately after the membranes are installed to ensure the membranes are not left exposed to sunlight or UV radiation.



**BRANZ Appraisal**  
Appraisal No. 1037 (2023)  
06 December 2023

COLPHENE BSW TANKING MEMBRANE  
SYSTEM

#### Membrane Installation – Floors

- 15.4 The membranes must be installed in accordance with the Technical Literature. Sheet edges must be overlapped a minimum of 130 mm and end laps must be a minimum of 150 mm. The membranes must be inspected for damage and any damage must be repaired in accordance with the Technical Literature. The membranes must not be exposed to UV radiation for any longer than two months before the structural concrete slab is placed.

#### System Installation – Pre-Applied

##### Site Preparation

- 16.1 All surfaces are to be sound and solid to eliminate movement during concrete placement. Substrate must be regular and smooth with no gaps or voids greater than 12 mm. Grout must be used around all penetrations such as utility conduits for stability.

##### Membrane Installation

- 16.2 Colphene BSW Tanking Membranes must be installed to all areas required to achieve a waterproof finish in accordance with Equus Industries Ltd Technical Data. Temperatures must be greater than -4°C during installation.
- 16.3 The granular surface must face the new concrete. The end laps must be staggered to avoid build up of layers.
- 16.4 The end laps must be accurately positioned to avoid build up of layers. Sheets must overlap the previous sheet by a minimum of 130 mm for side laps and a minimum of 150 mm for end laps. The underside of the sheet must be clean, dry and free from contamination before making the overlaps. All laps are torched together.
- 16.5 Concrete must be placed within 60 days.

#### Inspections

- 17.1 The Technical Literature and the installation company's Quality Control sheets must be referred to during the inspection of the membrane installation.

#### Health and Safety

- 18.1 Safe use and handling procedures for the membranes is provided in the Technical Literature.

#### Basis of Appraisal

The following is a summary of the technical investigations carried out:

##### Tests

- 19.1 The following testing of Colphene BSW Tanking Membrane System has been undertaken:
- Watertightness, tensile strength, elongation, resistance to static load, resistance to impact, joint strength (peel and shear), flow resistance at elevated temperature after heat aging, flexibility at low temperature [-15°C], flexibility at low temperature [-5°C] after heat ageing, water vapour flow resistance, peel adhesion to concrete, resistance to hydrostatic head (sample incorporated a joint) and load strain tear strength.

Test methods and results have been reviewed by BRANZ and found to be satisfactory.

##### Other Investigations

- 20.1 A durability opinion has been given by BRANZ technical experts.
- 20.2 Practicability of installation has been assessed by BRANZ and found to be satisfactory.
- 20.3 The Technical Literature has been examined by BRANZ and found to be satisfactory.



**BRANZ Appraised**  
Appraisal No. 1037 (2023)

**BRANZ Appraisal**  
Appraisal No. 1037 (2023)  
06 December 2023

COLPHENE BSW TANKING MEMBRANE  
SYSTEM

### Quality

- 21.1 The manufacture of the membranes and primers have not been examined by BRANZ, but details regarding the quality and composition of the materials used were obtained by BRANZ and found to be satisfactory.
- 21.2 The quality of materials supplied to the market is the responsibility of Equus Industries Ltd.
- 21.3 Quality of installation on-site is the responsibility of the Equus Industries Ltd certified applicator.
- 21.4 Designers are responsible for the building design, and building contractors are responsible for the quality of construction of substrate systems in accordance with the instructions of Equus Industries Ltd.
- 21.5 Building owners are responsible for the maintenance of the membrane systems in accordance with the instructions of Equus Industries Ltd.

### Sources of Information

- NZS 3101:2006 Concrete structures standard.
- NZS 3604:2011 Timber-framed buildings.
- NZS 4229:2013 Concrete masonry buildings not requiring specific engineering design.
- NZS 4230:2004 Design of reinforced concrete masonry structures.
- Ministry of Business, Innovation and Employment Record of amendments - Acceptable Solutions, Verification Methods and handbooks.
- The Building Regulations 1992.



**BRANZ Appraisal**  
Appraisal No. 1037 [2023]  
06 December 2023

COLPHENE BSW TANKING MEMBRANE  
SYSTEM



In the opinion of BRANZ, **Colphene BSW Tanking Membrane System** is fit for purpose and will comply with the Building Code to the extent specified in this Appraisal provided it is used, designed, installed and maintained as set out in this Appraisal.

The Appraisal is issued only to **Soprema NV**, and is valid until further notice, subject to the Conditions of Appraisal.

### Conditions of Appraisal

1. This Appraisal:
  - a) relates only to the product as described herein;
  - b) must be read, considered and used in full together with the Technical Literature;
  - c) does not address any Legislation, Regulations, Codes or Standards, not specifically named herein;
  - d) is copyright of BRANZ.
2. **Soprema NV**:
  - a) continues to have the product reviewed by BRANZ;
  - b) shall notify BRANZ of any changes in product specification or quality assurance measures prior to the product being marketed;
  - c) abides by the BRANZ Appraisals Services Terms and Conditions;
  - d) warrants that the product and the manufacturing process for the product are maintained at or above the standards, levels and quality assessed and found satisfactory by BRANZ pursuant to BRANZ's Appraisal of the product.
3. BRANZ makes no representation or warranty as to:
  - a) the nature of individual examples of, batches of, or individual installations of the product, including methods and workmanship;
  - b) the presence or absence of any patent or similar rights subsisting in the product or any other product;
  - c) any guarantee or warranty offered by **Soprema NV**.
4. Any reference in this Appraisal to any other publication shall be read as a reference to the version of the publication specified in this Appraisal.
5. BRANZ provides no certification, guarantee, indemnity or warranty, to **Soprema NV** or any third party.

For BRANZ



**Claire Falck**

Chief Executive

Date of Issue:

06 December 2023

# COLPHENE BSW TANKING SYSTEM

Bitumen membrane system for underground waterproofing

January 2025

## PURPOSE AND SCOPE OF USE:

The COLPHENE BSW Tanking Membrane system is a high-performance, reinforced modified SBS bitumen membrane system, designed for underground waterproofing with specific products for horizontal or vertical applications. While COLPHENE BSW is suitable for a range of underground waterproofing situations, it provides highly robust tanking to protect areas against a high risk of hydrostatic water pressure. Solutions can be provided for buildings of all sizes and requirements including pre-applied loose laid under-slab, pre-applied to vertical walls, external blind side waterproofing or post applied to vertical walls with options for torch-on or self-adhesion. The upper surface of the membrane is coated with crystals that specifically adhere to the concrete slab when freshly poured against the membrane. This adhesion with the concrete creates a watertight bond preventing water infiltration to the concrete.

The complete system includes swellable waterstops, and a drainage and protection layer laid between the membrane and the earth. This provides an extra layer of protection, extending the life of the membrane. Horizontal or vertical insulation can also be added to the system for increased thermal efficiency to the building.

## PRODUCTS:

The system encompasses a selection of the products below. Refer to standard specification P5100 or Masterspec work section 4131EB for full specification details.

|   |                               |
|---|-------------------------------|
| COLPHENE BSW H                              | COLPHENE BSW V                |
| COLPHENE 3000                               | SOPRADERE QUICK               |
| Equus Peel and Stick Primer                 | ALSAN FLASHING                |
| Other Equus liquid applied detail membranes | Equus Termination Bar         |
| Equus drainage layers                       | Equus XPS insulation          |
| ALSAN MASTIC 2200 Sealant                   | SOPRASEAL Sealant             |
| Equus Swellseal Waterstop                   | Aquafin CJ4 or CJ6 Waterstops |

## SPECIFICATIONS:

|  |
|--|
| P5100 EQUUS SOPREMA COLPHENE BSW below-ground waterproofing system to concrete or masonry structures |
| Masterspec 4131EB EQUUS SOPREMA COLPHENE Tanking Membrane  |

## CONDITIONS OF USE:

The product must be installed by a Certified Equus Applicator. Verification of their status can be confirmed by a current applicator certificate or by contacting Equus Industries. Any installation must be done in accordance with the latest specifications and technical documentation, or with written approval by Equus Industries Ltd.

## BUILDING CODE COMPLIANCE:

**B2 Durability** - B2.3.1 (a), COLPHENE BSW has a durability of at least 50 years where used underground when installed with the correct specification, installation and maintenance. See BRANZ Appraisal 1037.

**E2 External moisture** - E2.3.2, E2.3.3, E2.3.7 Test data, together with in-service history in New Zealand and internationally, of the correctly installed COLPHENE BSW membrane over correctly designed and constructed substrates, show that the membrane successfully resists the ingress of moisture. See BRANZ Appraisal 1037.

**F2 Hazardous building materials** - F2.3.1 Well known experience with the type of materials used together with in-service history, show that COLPHENE BSW complies with this performance requirement. Refer to SDS at [www.equus.nz](http://www.equus.nz)

## SUPPORTING DOCUMENTATION:

| Title (Type)             | Version       | URL  |
|--------------------------|---------------|--|
| BRANZ Appraisal No. 1037 | 22 April 2022 | <a href="http://www.equus.nz/content/reports/branz-appraisal-colphene-1037.pdf">www.equus.nz/content/reports/branz-appraisal-colphene-1037.pdf</a> |



4131EB Equus Soproema Colphene Tanking Membrane



Equus Industries Ltd. 4 Sheffield St, Blenheim 7274 | Phone: 03 578 0214 | Email: [info@equus.nz](mailto:info@equus.nz) | Web: [www.equus.nz](http://www.equus.nz)

The information in this product data sheet is based on our experience and testing. It represents the latest information available at the time of printing, but no guarantee of its accuracy is made or implied, nor responsibility taken for use to which this information may be put. We reserve the right to alter or up-date information parameters and formulations at any time without notice.

# COLPHENE BSW TANKING SYSTEM

## Bitumen membrane system for underground waterproofing

January 2025

**WARNINGS AND BANS:**

|  |    |
|--|----|
| Is the building product/building product line subject to warning or ban under section 26 of the Building Act 2004? | No |
|--|----|

**MANUFACTURER CONTACT DETAILS:**

|  |                                   |
|--|-----------------------------------|
| Manufacture location                   | New Zealand                       |
| Legal and trading name of manufacturer | Equus Industries Ltd.             |
| Manufacturer address for service       | 4 Sheffield Street, Blenheim 7274 |
| Manufacturer website                   | www.equus.nz                      |
| Manufacturer email                     | info@equus.nz                     |
| Manufacturer phone number              | 03 578 0214                       |
| Manufacturer NZBN                      | 9429032000306                     |

Equus Industries Ltd. 4 Sheffield St, Blenheim 7274 | Phone: 03 578 0214 | Email: info@equus.nz | Web: www.equus.nz

The information in this product data sheet is based on our experience and testing. It represents the latest information available at the time of printing, but no guarantee of its accuracy is made or implied, nor responsibility taken for use to which this information may be put. We reserve the right to alter or up-date information parameters and formulations at any time without notice.

# COLPHENE BSW H

## Waterproofing membrane

August 2024

### DESCRIPTION:

COLPHENE BSW H is a high-performance waterproofing membrane composed of SBS modified bitumen and a non-woven polyester reinforcement. The surface is sanded, while the underface is covered with a thermofusible plastic film. COLPHENE BSW H is designed for horizontal blindside waterproofing applications.



### PACKAGING:

| Specifications | COLPHENE 300               |
|----------------|----------------------------|
| Thickness      | 3.5 mm                     |
| Reinforcement  | Non-woven polyester        |
| Dimensions     | 1 x 10 m                   |
| Weight         | 4.3 kg/m <sup>2</sup>      |
| Selvage width  | 100 mm                     |
| Surface        | Sanded                     |
| Underface      | Thermofusible plastic film |
| Qty/Pallet     | 25                         |

### TECHNICAL DATA:

| Properties                           | Standards                                  | COLPHENE BSW H               |
|--------------------------------------|--|------------------------------|
| Tensile strength at peak load, MD/XD | ASTM D5147                                 | 17/11.5 kN/m                 |
| Elongation at break, MD/XD           | ASTM D5147                                 | 60/65 %                      |
| Tear strength, MD/XD                 | ASTM D5147                                 | 600 N/400 N                  |
| Low temperature flexibility          | ASTM D5147                                 | Unaffected at -20°C          |
| Puncture resistance                  | ASTM E154                                  | 1050 N                       |
| Water vapour permeability            | ASTM E96<br>(Method B)                     | < 2.5 ng/Pa·s·m <sup>2</sup> |
| Water absorption                     | ASTM D570<br>@ 24 hours                    | < 0.5%                       |
| Adhesion to poured concrete, 22°C    | ASTM D903 modified<br>(Peeled at 50mm/min) | 3400 N/m                     |
| Resistance to hydrostatic head       | ASTM D5385                                 | > 110 m                      |
| Lateral water migration              | ASTM D5385 modified                        | > 100 m                      |

### APPLICATION:

#### HEAT-WELDED

COLPHENE BSW H membrane is installed loose laid on the concrete work slab or on a protection board over prepared and well compacted soil. To prevent overly thick membranes, stagger the end laps by a minimum of 300 mm. Side lap joints must be a minimum of 100 mm and end lap joints must be a minimum of 150 mm.

Membrane overlaps are sealed, by heat welding, with a propane torch or using an electric hot-air welder. All angle changes (inside and outside corners) and other details must be reinforced by heat-welding an additional 300 mm piece of COLPHENE BSW H centred on the angle.

# COLPHENE BSW H

## Waterproofing membrane

August 2024

### APPLICATION:

#### DUO SELVEDGE

Over the entire width of DUO SELVAGE, 50% of the surface is covered with exposed sticky bitumen. The remaining surface of the selvedge (50%) is covered by a thermofusible plastic film to seal overlap by heat-welding with a propane torch or with the SOPRAMATIC automatic hot-air welder.

UV exposure: up to 60 days.

### SCOPE OF USE:

COLPHENE BSW H is used as waterproofing membrane for foundations and other below ground horizontal surfaces with low to high risk of hydrostatic water pressure against concrete and masonry substrates. The membrane can be overlaid with an Equus approved drainage mat for protection. The membrane can be used in vertical underground applications, but it is generally recommended that COLPHENE BSW V is used for vertical application due to ease of installation.

Suitable for other waterproofing applications with written approval by Equus Industries Ltd.

### CONDITIONS OF USE:

Written approval is required for this membrane to be used on a substrate or in a waterproofing system not outlined in the standard Equus specifications. The product must be installed by a Certified Equus Applicator. Verification of their status can be confirmed by a current applicator certificate or by contacting Equus Industries Ltd. Any installation must be done in accordance with the latest specifications and technical documentation, or with written approval by Equus Industries Ltd.

### BUILDING CODE COMPLIANCE:

**B2 Durability** - B2.3.1 (a), COLPHENE BSW H has a durability of at least 50 years where used underground when installed with the correct specification, installation and maintenance. See BRANZ Appraisal 1037.

**E2 External moisture** - E2.3.2, E2.3.3, E2.3.7 Test data, together with in-service history in New Zealand and internationally, of the correctly installed COLPHENE BSW H membrane over correctly designed and constructed substrates, show that the membrane successfully resists the ingress of moisture. See BRANZ Appraisal 1037.

**F2 Hazardous building materials** - F2.3.1 Well known experience with the type of materials used together with in-service history, show that COLPHENE BSW H complies with this performance requirement. Refer to SDS at [www.equus.nz](http://www.equus.nz).

### SUPPORTING DOCUMENTATION:

| Title (Type)             | Version       | URL   |
|--------------------------|---------------|---|
| BRANZ Appraisal No. 1037 | 22 April 2022 | <a href="https://www.equus.nz/content/reports/branz-appraisal-colphene-1037.pdf">https://www.equus.nz/content/reports/branz-appraisal-colphene-1037.pdf</a> |

### STORAGE AND HANDLING:

Rolls must be stored upright, with the selvedge side on top. If the product is stored outdoors, cover them with an opaque protective cover after the removal of the delivery packaging.

### HEALTH AND SAFETY:

For more information, please refer to the relevant Safety Data Sheet.

### WARNINGS AND BANS:

|  |    |
|--|----|
| Is the building product/building product line subject to warning or ban under section 26 of the Building Act 2004? | No |
|--|----|

Equus Industries Ltd. PO Box 601, Blenheim | Phone: 03 578 0214 | Email: [admin@equus.nz](mailto:admin@equus.nz) | Web: [www.equus.nz](http://www.equus.nz)

The information in this product data sheet is based on our experience and testing. It represents the latest information available at the time of printing, but no guarantee of its accuracy is made or implied, nor responsibility taken for use to which this information may be put. We reserve the right to alter or up-date information parameters and formulations at any time without notice.

# COLPHENE BSW H

## Waterproofing membrane

August 2024

### MANUFACTURERS CONTACT DETAILS:

|  |   |
|--|---|
| Manufacture location                   | Canada  |
| Legal and trading name of manufacturer | Soprema New Zealand Limited   |
| Manufacturer address for service       | Level 3, Candida Building 4, 61 Constellation Drive, Mairangi Bay, Auckland 0630, New Zealand |
| Manufacturer website                   | <a href="http://www.soprema.com.au">www.soprema.com.au</a>                                    |
| Manufacturer email                     | <a href="mailto:info@soprema.com.au">info@soprema.com.au</a>                                  |
| Manufacturer phone number              | +61 3 9221 6230   |
| Manufacturer NZBN                      | 9429050312962   |

Equus Industries Ltd. PO Box 601, Blenheim | Phone: 03 578 0214 | Email: [admin@equus.nz](mailto:admin@equus.nz) | Web: [www.equus.nz](http://www.equus.nz)

The information in this product data sheet is based on our experience and testing. It represents the latest information available at the time of printing, but no guarantee of its accuracy is made or implied, nor responsibility taken for use to which this information may be put. We reserve the right to alter or up-date information parameters and formulations at any time without notice.

# COLPHENE BSW V

## Waterproofing membrane

August 2024

### DESCRIPTION:

COLPHENE BSW V is a high-performance waterproofing membrane composed of SBS modified bitumen and a composite reinforcement.

The topside is covered with specially engineered carbon dioxide crystals and the underside is covered by a silicon release film. COLPHENE BSW V is designed for vertical blind side waterproofing applications.



### FIELD OF APPLICATION:

COLPHENE BSW V is a pre-applied membrane designed for vertical blind side waterproofing applications (below grade and tanking works).

COLPHENE BSW V can be used for the following general applications:

- Retaining walls
- Foundations

### PACKAGING:

|            |          |
|------------|----------|
| Dimensions | 1 x 10 m |
| Weight     | 35 kg    |
| Qty/Pallet | 30       |

### APPLICATION METHOD:

COLPHENE BSW V is a self-adhered 'peel and stick' membrane installed over a prepared substrate using Equus Peel & Stick Primer and neoprene roller.

### DUO SELVEDGE

Over the entire width of DUO SELVEDGE, 60% of the surface is covered with exposed sticky bitumen. The remaining surface of the selvedge (40%) is covered by a thermofusible plastic film to seal overlap by heat-welding with a propane torch or with the SOPRAMATIC automatic hot-air welder.

### APPLICATION PROCEDURE:

#### SUBSTRATE

- No work should be started until all surfaces are smooth, dry and free of ice, snow or any other substance that may prevent the membrane from adhering properly.
- Commencement of installation shall be taken as acceptance of the substrate by the Applicator.
- The use of Equus Peel & Stick Primer is required before installation of COLPHENE BSW V membrane if the adhesion is not enough.

#### INSTALLATION

- COLPHENE BSW V is installed in vertical strips of 5 m maximum onto acceptable substrate.
- COLPHENE BSW V membrane is adhered to substrate by peeling off the silicone release film.
- Side lap joints must be a minimum of 100 mm and end lap joints must be a minimum of 150 mm.
- Once installed, pressure must be applied over the whole surface using a membrane roller to ensure good contact.
- Membrane overlaps are sealed, by heat welding, with a propane torch or using an electric hot-air welder.
- The uppermost edge of each strip must be mechanically fastened to substrate using round plates of 50 mm diameter and appropriate fasteners for base material every 300 mm on center.

For complete installation specification and information please contact your local Equus Representative.



4131EB Equus Soprema Colphene Tanking Membrane



Equus Industries Ltd. PO Box 601, Blenheim | Phone: 03 578 0214 | Email: admin@equus.nz | Web: www.equus.nz

The information in this product data sheet is based on our experience and testing. It represents the latest information available at the time of printing, but no guarantee of its accuracy is made or implied, nor responsibility taken for use to which this information may be put. We reserve the right to alter or up-date information parameters and formulations at any time without notice.

# COLPHENE BSW V

## Waterproofing membrane

August 2024

### SCOPE OF USE:

COLPHENE BSW V is used as waterproofing membrane for foundations and other below ground vertical surfaces with low to high risk of hydrostatic water pressure against concrete and masonry substrates. The membrane can be overlaid with an Equus approved drainage mat for protection.

Suitable for other waterproofing applications with written approval by Equus Industries Ltd.

### CONDITIONS OF USE:

Written approval is required for this membrane to be used on a substrate or in a waterproofing system not outlined in the standard Equus specifications. The product must be installed by a Certified Equus Applicator. Verification of their status can be confirmed by a current applicator certificate or by contacting Equus Industries Ltd. Any installation must be done in accordance with the latest specifications and technical documentation, or with written approval by Equus Industries Ltd.

### BUILDING CODE COMPLIANCE:

**B2 Durability** - B2.3.1 (a), COLPHENE BSW V has a durability of at least 50 years where used underground when installed with the correct specification, installation and maintenance. See BRANZ Appraisal 1037.

**E2 External moisture** - E2.3.2, E2.3.3, E2.3.7 Test data, together with in-service history in New Zealand and internationally, of the correctly installed COLPHENE BSW V membrane over correctly designed and constructed substrates, show that the membrane successfully resists the ingress of moisture. See BRANZ Appraisal 1037.

**F2 Hazardous building materials** - F2.3.1 Well known experience with the type of materials used together with in-service history, show that COLPHENE BSW V complies with this performance requirement. Refer to SDS at [www.equus.nz](http://www.equus.nz).

### SUPPORTING DOCUMENTATION:

| Title (Type)             | Version       | URL   |
|--------------------------|---------------|---|
| BRANZ Appraisal No. 1037 | 22 April 2022 | <a href="https://www.equus.nz/content/reports/branz-appraisal-colphene-1037.pdf">https://www.equus.nz/content/reports/branz-appraisal-colphene-1037.pdf</a> |

### STORAGE AND HANDLING:

Rolls must be stored upright, with the selvedge side on top. If the product is stored outdoors, cover them with an opaque protective cover after the removal of the delivery packaging.

### HEALTH AND SAFETY:

For more information, please refer to the relevant Safety Data Sheet.

### WARNINGS AND BANS:

|  |    |
|--|----|
| Is the building product/building product line subject to warning or ban under section 26 of the Building Act 2004? | No |
|--|----|

### MANUFACTURERS CONTACT DETAILS:

|  |   |
|--|---|
| Manufacture location                   | Canada  |
| Legal and trading name of manufacturer | Soprema New Zealand Limited   |
| Manufacturer address for service       | Level 3, Candida Building 4, 61 Constellation Drive, Mairangi Bay, Auckland 0630, New Zealand |
| Manufacturer website                   | <a href="http://www.soprema.com.au">www.soprema.com.au</a>                                    |
| Manufacturer email                     | <a href="mailto:info@soprema.com.au">info@soprema.com.au</a>                                  |
| Manufacturer phone number              | +61 3 9221 6230   |
| Manufacturer NZBN                      | 9429050312962   |

Equus Industries Ltd. PO Box 601, Blenheim | Phone: 03 578 0214 | Email: [admin@equus.nz](mailto:admin@equus.nz) | Web: [www.equus.nz](http://www.equus.nz)

The information in this product data sheet is based on our experience and testing. It represents the latest information available at the time of printing, but no guarantee of its accuracy is made or implied, nor responsibility taken for use to which this information may be put. We reserve the right to alter or up-date information parameters and formulations at any time without notice.

# COLPHENE 3000

## Self-adhesive waterproofing membrane

August 2024

### DESCRIPTION:

COLPHENE 3000 is a self-adhesive waterproofing membrane composed of SBS modified bitumen and a tri-laminated woven polyethylene facer. The underface is covered with silicone release film.

COLPHENE 3000 is designed for foundation walls and other below grade vertical surfaces, as well as a vapour barrier for warm and green roof systems.

This product can be used on most building surfaces, such as masonry, concrete and wood.



### PACKAGING:

| Specifications | COLPHENE 300                     |
|----------------|----------------------------------|
| Thickness      | 1.5 mm                           |
| Dimensions     | 1 x 18.7 m                       |
| Weight         | 1.5 kg/m <sup>2</sup>            |
| Selvage width  | 75 mm                            |
| Surface        | Tri-laminated woven polyethylene |
| Underface      | Silicone release film            |
| Qty/Pallet     | 30                               |

### TECHNICAL DATA:

| Properties   | Standards                 | COLPHENE 3000                                 |
|--|---------------------------|---|
| Tensile strength, MD/XD  | ASTM D5147                | 11.3/15.4 kN/m                                |
| Tensile strength, MD/XD  | ASTM D412                 | 11.2/13.1 MPa                                 |
| Ultimate elongation, MD/XD   | ASTM D412                 | 88/55 %                                       |
| Ultimate elongation, MD/XD   | ASTM D5147                | 40/25 %                                       |
| Elongation of rubberised asphalt   | ASTM D5147                | > 1000 %                                      |
| Flexibility at cold temperature  | ASTM D5147                | -35°C   |
| Dynamic puncture   | ASTM E154                 | 747 N   |
| Static puncture  | ASTM D5602                | 400 N   |
| Tear resistance, MD/XD   | ASTM D5601                | 375/400 N                                     |
| Lap adhesion   | ASTM D1876                | 2000 N/m                                      |
| Water absorption   | ASTM D5147                | 0.1 % max                                     |
| Peel resistance  | ASTM D903                 | 3500 N/m                                      |
| Water vapour permeability  | ASTM E96<br>(Procedure B) | < 2.5 ng/Pa·s·m <sup>2</sup><br>(< 0.04 perm) |
| Crack cycling at -32°C, 100 cycles                                       | ASTM C836                 | Unaffected                                    |
| Resistance to hydrostatic head   | ASTM D5385                | Minimum 114 m                                 |
| Adhesion to strength to concrete<br>-not primed<br>-combined with primer | ASTM D1000                | 560 N/m<br>1650 N/m                           |

(All values are nominal)

(All values are nominal)



4131EB Equus Soprema Colphene Tanking Membrane



Equus Industries Ltd. PO Box 601, Blenheim | Phone: 03 578 0214 | Email: admin@equus.nz | Web: www.equus.nz

The information in this product data sheet is based on our experience and testing. It represents the latest information available at the time of printing, but no guarantee of its accuracy is made or implied, nor responsibility taken for use to which this information may be put. We reserve the right to alter or up-date information parameters and formulations at any time without notice.

# COLPHENE 3000

## Self-adhesive waterproofing membrane

August 2024

**SCOPE OF USE:**

COLPHENE 3000 is used as waterproofing membrane for foundation walls and other below ground vertical surfaces (up to 3 m deep) with low risk of hydrostatic water pressure against concrete and masonry substrates. The membrane can be overlaid with an Equus approved drainage mat for protection.

COLPHENE 3000 can also be used as a vapour barrier in an Equus Soprema Warm Roof system where specified by the Condensation Risk Analysis (CRA). It is suitable for new builds and refurbishments, residential and commercial construction, in any location in New Zealand.

Suitable for other waterproofing applications with written approval by Equus Industries Ltd.

**SURFACE PREPARATION:**

The use of Equus Peel and Stick Primer for self-adhesive membranes is required before the installation of COLPHENE 3000 membrane.

The substrate should be clean, sound, dry and free of loose materials, grease and any contaminants, which may compromise the performance of the product.

**INSTALLATION:**

SELF-ADHESIVE COLPHENE 3000 membrane must be adhered to substrate by peeling off the silicone release film. Side lap joints must be a minimum of 75 mm and end lap joints must be a minimum of 150 mm. Once installed, pressure must be applied over the whole surface using a membrane roller to ensure good contact with the substrate. The upper most edge of the membrane shall be mechanically fastened using termination bars and sealed with a compatible SOPREMA sealant. Contact Equus for suitable sealant.

**Application temperatures:** Winter grade: -10 to 10°C, Summer grade: 10 to 50°C

**UV exposure:** up to 60 days

**RESTRICTION:**

Concrete must be cured a minimum of fourteen (14) days and an adhesion test is recommended before membrane application. For complete information on product installation, please consult your Equus Consultant.

**CONDITION OF USE:**

COLPHENE 3000 shall not be used on surfaces over 3 m below ground or in areas with high hydrostatic water pressure, in this case COLPHENE BSW waterproofing shall be used.

Written approval is required for this membrane to be used on a substrate or in a waterproofing system not outlined in the standard Equus specifications.

The product must be installed by a Certified Equus Applicator. Verification of their status can be confirmed by a current applicator certificate or by contacting Equus Industries Ltd. Any installation must be done in accordance with the latest specifications and technical documentation, or with written approval by Equus Industries Ltd.

**BUILDING CODE COMPLIANCE:**

**B2 Durability** - B2.3.1 (a,b), COLPHENE 3000 has a durability of at least 50 years where used underground and at least 15 years where used above ground, when installed with the correct specification, installation and maintenance. BRANZ Appraisal 1037.

**E2 External moisture** - E2.3.2, E2.3.3, E2.3.7 Test data, together with in-service history in New Zealand and internationally, of the correctly installed COLPHENE 3000 membrane over correctly designed and constructed substrates, show that the membrane successfully resists the ingress of moisture. See BRANZ Appraisal 1037.

**F2 Hazardous building materials** - F2.3.1 Well known experience with the type of materials used together with in-service history, show that COLPHENE 3000 complies with this performance requirement. Refer to SDS at [www.equus.nz](http://www.equus.nz)

# COLPHENE 3000

## Self-adhesive waterproofing membrane

**August 2024**

**SUPPORTING DOCUMENTATION:**

| Title (type)             | Version       | URL   |
|--------------------------|---------------|---|
| BRANZ Appraisal No. 1037 | 22 April 2022 | <a href="https://www.equus.nz/content/reports/branz-appraisal-colphene-1037.pdf">https://www.equus.nz/content/reports/branz-appraisal-colphene-1037.pdf</a> |

**STORAGE AND HANDLING:**

Rolls must be stored upright, with the selvedge side on top. If the product is stored outdoors, cover them with an opaque protective cover after removal of the delivery packaging.

**HEALTH AND SAFETY:**

The product does not contain any substance which is likely to be detrimental to your health or the environment and complies with generally admitted Health and Safety Requirements. For more information, please refer to the relevant Safety Data Sheet.

**WARNINGS AND BANS:**

|  |    |
|--|----|
| Is the building product/building product line subject to warning or ban under section 26 of the Building Act 2004? | No |
|--|----|

**MANUFACTURERS CONTACT DETAILS:**

|  |   |
|--|---|
| Manufacture location                   | Canada  |
| Legal and trading name of manufacturer | Soprema New Zealand Limited   |
| Manufacturer address for service       | Level 3, Candida Building 4, 61 Constellation Drive, Mairangi Bay, Auckland 0630, New Zealand |
| Manufacturer website                   | <a href="http://www.soprema.com.au">www.soprema.com.au</a>                                    |
| Manufacturer email                     | <a href="mailto:info@soprema.com.au">info@soprema.com.au</a>                                  |
| Manufacturer phone number              | +61 3 9221 6230   |
| Manufacturer NZBN                      | 9429050312962   |

Equus Industries Ltd. PO Box 601, Blenheim | Phone: 03 578 0214 | Email: [admin@equus.nz](mailto:admin@equus.nz) | Web: [www.equus.nz](http://www.equus.nz)

The information in this product data sheet is based on our experience and testing. It represents the latest information available at the time of printing, but no guarantee of its accuracy is made or implied, nor responsibility taken for use to which this information may be put. We reserve the right to alter or up-date information parameters and formulations at any time without notice.

# SOPRADERE QUICK

## Cold applied fast drying primer

January 2025



### PURPOSE AND AREAS OF USE:

Cold applied fast drying primer based on bitumen, solvents and adhesion-improving additives. Impregnation to ensure good adhesion to substrate (concrete, metal and wood) before welding (torch-on or hot-air method) or gluing bituminous waterproofing membranes. It is also suitable on old/weathered bituminous waterproofing membranes with a slate or granulated finish.

### STANDARD PACK:

Can of 5 and 25 L.

### PROPERTIES:

|                                 |   |
|---------------------------------|---|
| Composition                     | Bitumen, solvents and adhesion-improving additives. |
| Curing time                     | 530 min.  |
| Consumption (l/m <sup>2</sup> ) | 0.15-0.25   |
| Application temperature         | Min +5°C  |
| Coverage rate                   | 5-6 sqm <sup>2</sup> /L                             |

### INSTALLATION:

Thoroughly mix the product before use. Apply with a brush, roller or rubber squeegee on a dry, dust and grease free substrate. Allow to dry completely before applying the membrane. See label for more information.

### CLEANING:

Wet product - white spirit.

### HEALTH AND SAFETY:

For more information, please refer to the relevant Safety Data Sheet (SDS).

SOPREMA has always attached the highest importance to the quality of the products, the environment and safety. For this reason, they operate independently monitored Quality and Environment Assurance Systems in line with EN ISO 9001 and EN ISO 14001.

### WARNINGS AND BANS:

|  |    |
|--|----|
| Is the building product/building product line subject to warning or ban under section 26 of the Building Act 2004? | No |
|--|----|

### MANUFACTURERS CONTACT DETAILS:

|  |   |
|--|---|
| Manufacture location                   | Belgium   |
| Legal and trading name of manufacturer | Soprema New Zealand Limited   |
| Manufacturer address for service       | Level 3, Candida Building 4, 61 Constellation Drive, Mairangi Bay, Auckland 0630, New Zealand |
| Manufacturer website                   | www.soprema.com.au  |
| Manufacturer email                     | info@soprema.com.au   |
| Manufacturer phone number              | +61 3 9221 6230   |
| Manufacturer NZBN                      | 9429050312962   |

Equus Industries Ltd. 4 Sheffield St, Blenheim 7274 | Phone: 03 578 0214 | Email: info@equus.nz | Web: www.equus.nz

The information in this product data sheet is based on our experience and testing. It represents the latest information available at the time of printing, but no guarantee of its accuracy is made or implied, nor responsibility taken for use to which this information may be put. We reserve the right to alter or up-date information parameters and formulations at any time without notice.

# EQUUS PEEL AND STICK PRIMER

## Primer for self-adhesive waterproofing membranes

January 2025

**DESCRIPTION:**

Equus Peel and Stick Primer is a rubber based adhesive solvent solution which is specifically formulated to provide excellent adhesion with the Equus self-adhesive Waterproofing Membranes under many kinds of surface conditions. Equus Peel and Stick Primer is an integral part of Equus self-adhesive Waterproofing Systems and sufficient primer must be used on dry surfaces to condition them to be dust free so that the substrate is suitable for the self-adhesive application of Equus Waterproofing Membranes.

**USES:**

Used to prime all structural concrete, masonry, or wood surfaces on which waterproofing membranes will be used. Designed to be used on applications down to -4°C.

May be used on horizontal surfaces, but remains tacky, and precautions must be used in this application to prevent contamination of the Primer surface prior to installation of the membrane.

Must be used on all concrete block and brick wall conditions.

Do not use on EPS sheet or block. In this case use Equus EPS Primer.

**APPLICATION:**

Equus Peel and Stick Primer may be applied with roller, brush or spray. A roller with a heavy nap should be used to carry sufficient material to the area being primed.

Apply all Equus Peel and Stick Primer to a clean, dry, dust free and frost free surface at a coverage of approximately 6-8 sqm/litre. The primer should be spread sufficiently to avoid areas of excess material. Areas of excess material will lengthen the drying time on the application of the primer.

Equus Peel and Stick Primer is to dry a minimum of one hour - may dry quicker due to drying conditions, such as wind and warmth.

This product is red in colour and will remain tacky when dry. The application of primer should be limited to what can be covered with Waterproofing Membrane in one working day. Any areas not covered with membrane during the day must be reprimed - be sure to cover all open containers when not applying primer, as the primer is volatile.

**SAFETY, STORAGE AND HANDLING:**

Equus Peel and Stick Primer vapours are flammable. User should review the Safety Data Sheet (SDS) for this product and follow safety instructions listed therein.

**TRANSPORT CLASSIFICATION:**

IMDG Class 3.1  
UN No. 1294



# ALSAN FLASHING

## Liquid waterproofing membrane

November 2024

### DESCRIPTION:

ALSAN FLASHING is a waterproofing one-component polyurethane/bitumen resin. It is dedicated to roof flashings and details where it is difficult to apply waterproofing membranes.

A one-component product with no mixing required makes for easy application. This solution offers superior protection against moisture, and flexibility for effortless waterproofing of irregular shapes, making it an ideal choice for quick and cost-effective repairs.



### APPLICATION:

#### Surface Preparation:

- Concrete must be fully cured (28 days) with a minimum hardness of 24 MPa (3500 psi). Surface needs to be sound, clean and free of dust or debris.
- Concrete surface must be prepared to obtain concrete surface profile (ICRI CSP) of 3 or 4. To obtain such a profile, the use of special equipment such as shotblasting is recommended.
- **Without primer:** traditional granulated and sanded bituminous waterproofing membranes, wood, metal, pre-paint metal, concrete, polyurethane membrane (TRAFIK HP) and PVC pipe (vertical partition wall only).
- **With primer:** (SOPRADERE QUICK): Membranes with HDPE surface.
- PVC pipe must be sanded with sandpaper.
- All metal surfaces must be cleaned with non-greasy solvent such as acetone or Methyl Ethyl Ketone (MEK). Metal surfaces must be smooth, clean and uncontaminated (free of oxydised bitumen).
- When needed, concrete repair must be done with appropriate products.

#### Application:

- Mix the product well before use.
- ALSAN FLASHING is applied with a trowel, a brush or roller in two (2) layers, or in three (3) layers when POLYFLEECE is required. Each layer must have a minimum wet film thickness of 0.8 mm (30 mil).
- Transitions, changes in plan and junctions between two supports, must be reinforced with approved reinforcement. Approved reinforcement is installed in a first layer of ALSAN FLASHING. This layer must be thick enough to completely immerse the reinforcement. The approved reinforcement will be immediately covered with a second layer of ALSAN FLASHING until saturation.
- Third coat will be applied after 3 hours or when the second coat is tacky free.
- ALSAN FLASHING is UV resistant. It can be left exposed without protection. For aesthetic purposes, the top coat can also be covered with roofing granules.
- Do not use if rain or snow is predicted within 12 hours after the installation.

For proper curing, minimum application temperature is 5°C.

Service temperature: -30 to 150°C.

### PACKAGING:

| Packaging          | Coverage          | Wet film thickness | Dry film thickness |
|--------------------|-------------------|--------------------|--------------------|
| ALSAN FLASHING 19L | 23 m <sup>2</sup> | 0.8 mm             | 0.6 mm             |

For complete information on product installation, please consult your Equus Representative.

# ALSAN FLASHING

## Liquid waterproofing membrane

November 2024

### PROPERTIES:

| Properties                               | Test Method             | ALSAN FLASHING Reinforced*  |
|--|-------------------------|---|
| Physical state                           | -                       | Brown viscous liquid  |
| Density at 25°C                          | -                       | 1.07 kg/L   |
| Solids content                           | -                       | 80%   |
| Softening point                          | -                       | 150°C   |
| Ultimate elongation                      | ASTM D412               | 500%  |
| Breaking strength                        | ASTM D412               | 1.35 MPa  |
| Peel resistance                          | ASTM D903               | 102.3 N   |
| Tear resistance                          | ASTM D 5147, sec.7      | 235.5 N   |
| Water vapour permeance                   | ASTM E96 (Procedure B)  | < 30 ng/Pa•s•m <sup>2</sup> (< 0.47 perm)                               |
| Peel adhesion after water immersion      | ASTM C836               | 792 N/m   |
| Drying time                              | -                       | Ready to recoat after 2 hours<br>Dry: 12 hours (remains tacky to touch) |
| Fully cured*                             | -                       | 3 days  |
| Abrasion resistance*                     | AS 1580.403.2           | Pass  |
| Bond strength* (on granulated membranes) | ASTM D903               | > 1000 N/m  |
| Cyclic movement*                         | CSIRO Moving Joint Test | Pass  |
| Elongation at break*                     | AS1145                  | > 200%  |
| Heat aging*                              | Appendix A4-AS 4654     | Pass  |
| Temperature resistance*                  | AS 4654-2               | Pass  |
| Tensile strength at max load*            | Appendix A4-AS 4654     | > 6.5 kN/m  |
| UV resistance / durability*              | Appendix A4-AS 4654     | Pass  |

\* POLYFLEECE

### SCOPE OF USE:

ALSAN FLASHING can be used for waterproofing roofs, balconies, decks, terraces and foundations. In Equus SOPREMA membrane waterproofing systems it is generally used as a liquid detailing membrane.

Suitable for new builds and refurbishments, residential and commercial construction, in any location in New Zealand.

Suitable for other applications with written approval by Equus Industries Ltd.

### CONDITIONS OF USE:

- For proper curing, minimum application temperature is 5°C.
- Service temperature: -30 to 150°C.

Written approval is required for this product to be in a system not outlined in the standard Equus specifications.

The product must be installed by a Certified Equus Applicator. Verification of their status can be confirmed by a current applicator certificate or by contacting Equus Industries Ltd. Any installation must be done in accordance with the latest specifications and technical documentation, or with written approval by Equus Industries Ltd.

Equus Industries Ltd. 4 Sheffield St, Blenheim 7274 | Phone: 03 578 0214 | Email: info@equus.nz | Web: www.equus.nz

The information in this product data sheet is based on our experience and testing. It represents the latest information available at the time of printing, but no guarantee of its accuracy is made or implied, nor responsibility taken for use to which this information may be put. We reserve the right to alter or up-date information parameters and formulations at any time without notice.

# ALSAN FLASHING

## Liquid waterproofing membrane

November 2024

### BUILDING CODE COMPLIANCE:

**B2 Durability** - B2.3.1 (a) ALSAN FLASHING has a durability of at least 15 years when installed with the correct specification, installation and maintenance. Re-coating specifications are available to extend the life of the membrane.

**E2 External moisture** - E2.3.1, E2.3.2, E2.3.7 ALSAN FLASHING test data together with in-service history of the correctly installed ALSAN FLASHING system over correctly designed and constructed substrates, show that the membrane resists the ingress of moisture.

**F2 Hazardous building materials** - F2.3.1 Experience with the composition of materials used together with in-service history, show that ALSAN FLASHING complies with this performance requirement. Refer to SDS at [www.equus.nz](http://www.equus.nz)

### SUPPORTING DOCUMENTATION:

Test reports can be provided by SOPREMA New Zealand Ltd.

### STORAGE & HANDLING:

**Shelf life:** 12 months, pot must be stored in the delivery packaging, in a dry and protected environment.

For more information, refer to the instructions on the container label and relevant safety data sheet (SDS).

### WARNINGS AND BANS:

|  |    |
|--|----|
| Is the building product/building product line subject to warning or ban under section 26 of the Building Act 2004? | No |
|--|----|

### MANUFACTURERS CONTACT DETAILS:

|  |   |
|--|---|
| Manufacture location                   | Belgium   |
| Legal and trading name of manufacturer | Soprema New Zealand Limited   |
| Manufacturer address for service       | Level 3, Candida Building 4, 61 Constellation Drive, Mairangi Bay, Auckland 0630, New Zealand |
| Manufacturer website                   | <a href="http://www.soprema.com.au">www.soprema.com.au</a>                                    |
| Manufacturer email                     | <a href="mailto:info@soprema.com.au">info@soprema.com.au</a>                                  |
| Manufacturer phone number              | +61 3 9221 6230   |
| Manufacturer NZBN                      | 9429050312962   |

Equus Industries Ltd. 4 Sheffield St, Blenheim 7274 | Phone: 03 578 0214 | Email: [info@equus.nz](mailto:info@equus.nz) | Web: [www.equus.nz](http://www.equus.nz)

The information in this product data sheet is based on our experience and testing. It represents the latest information available at the time of printing, but no guarantee of its accuracy is made or implied, nor responsibility taken for use to which this information may be put. We reserve the right to alter or up-date information parameters and formulations at any time without notice.

# ALSAN MASTIC 2200

## Flexible mastic

March 2024

### DESCRIPTION:

Flexible mastic based on bitumen and synthetic rubber. Used for sealing small tears, cracks, joints and local repairs.



### TECHNICAL DATA:

| Properties              | ALSAN MASTIC 2200            |
|-------------------------|------------------------------|
| Composition             | Bitumen and synthetic rubber |
| Temperature resistance  | -20/+80°C                    |
| Application temperature | +5/+35°C                     |
| Consumption             | 15-20 m/cartridge            |

### PACKING AND STORAGE:

310 ml cartridge.  
20 cartridges/box.

Minimum 12 months in original unopened packaging, stored in a dry and cool place, protected from sunlight at a temperature between +10 and +25°C.

### INSTALLATION:

ALSAN MASTIC 2200 is applied with a gun on a clean and dust-free surface. It has excellent adhesion to most materials without prior treatment with a primer. It can be applied on a slightly damp surface.

Apply ALSAN MASTIC 2200 so that it is in full contact and has good adhesion to the edges of the joint. The curing time is 4 to 24 hours depending on the conditions and dimensions of the joint.

### CLEANING TOOLS:

White spirit.

### HEALTH AND SAFETY:

For more information, please refer to the relevant safety data sheet.

### QUALITY, ENVIRONMENT AND SAFETY MANAGEMENT:

SOPREMA always recognises as a high level of importance, the quality of the products, the environment and safety. For this reason, we operate independently monitored Quality and Environment Assurance Systems in line with EN ISO 9001 and EN ISO 14001

### WARNINGS AND BANS:

|  |    |
|--|----|
| Is the building product/building product line subject to warning or ban under section 26 of the Building Act 2004? | No |
|--|----|

Equus Industries Ltd. 4 Sheffield St, Blenheim 7274 | Phone: 03 578 0214 | Email: [info@equus.nz](mailto:info@equus.nz) | Web: [www.equus.nz](http://www.equus.nz)

The information in this product data sheet is based on our experience and testing. It represents the latest information available at the time of printing, but no guarantee of its accuracy is made or implied, nor responsibility taken for use to which this information may be put. We reserve the right to alter or up-date information parameters and formulations at any time without notice.

# ALSAN MASTIC 2200

## Flexible mastic

March 2024

**MANUFACTURERS CONTACT DETAILS:**

|  |   |
|--|---|
| Manufacture location                   | Belgium   |
| Legal and trading name of manufacturer | Soprema New Zealand Limited   |
| Manufacturer address for service       | Level 3, Candida Building 4, 61 Constellation Drive, Mairangi Bay, Auckland 0630, New Zealand |
| Manufacturer website                   | <a href="http://www.soprema.com.au">www.soprema.com.au</a>                                    |
| Manufacturer email                     | <a href="mailto:info@soprema.com.au">info@soprema.com.au</a>                                  |
| Manufacturer phone number              | +61 3 9221 6230   |
| Manufacturer NZBN                      | 9429050312962   |

Equus Industries Ltd. 4 Sheffield St, Blenheim 7274 | Phone: 03 578 0214 | Email: [info@equus.nz](mailto:info@equus.nz) | Web: [www.equus.nz](http://www.equus.nz)

The information in this product data sheet is based on our experience and testing. It represents the latest information available at the time of printing, but no guarantee of its accuracy is made or implied, nor responsibility taken for use to which this information may be put. We reserve the right to alter or up-date information parameters and formulations at any time without notice.

# DRENTEX PROTECT PLUS

## High strength drainage panel

January 2025

### DESCRIPTION:

DRENTEX PROTECT PLUS is a high-strength drainage panel consisting of a high-density polyethylene (HDPE) core with a factory-laminated geotextile for installation over waterproofing membranes in most vertical and horizontal drainage applications.

When used in conjunction with SOPREMA's waterproofing products, the DRENTEX line of products provides first-rate protection against build-up of water pressure and humidity. The non-woven geotextile filters the water to prevent the soil from blocking the drainage, while the polyethylene dimples guide and evacuate the water.

### FIELD OF APPLICATION:

- Rooftops
- Plaza decks & terraces
- Planter boxes
- Retaining walls
- Foundations

### PACKAGING:

| SPECIFICATIONS   | DRENTEX PROTECT PLUS |
|------------------|----------------------|
| Density          | 500 g/m <sup>2</sup> |
| Dimples height   | 7.5 mm               |
| Roll dimensions  | 20 m x 2 m           |
| Roll weight      | 24 kg                |
| Rolls per pallet | 6                    |

### KEY FEATURES:

- Simple and rapid installation
- Root resistant & rot-proof
- High resistance to compression
- Light load on structures
- Design allows more precise details



### PROPERTIES:

| HDPE CORE                 |               |   |
|---------------------------|---------------|---|
| Properties                | Test Method   | DRENTEX PROTECT PLUS                        |
| Compressive strength      | -             | 120 kN/m <sup>2</sup> ± 30                  |
| Density                   | EN ISO 9864   | 400 g/m <sup>2</sup> ± 5%                   |
| Dimples height (at 2kPa)  | EN ISO 9863-1 | 7.5 mm ± 1                                  |
| Tensile strength (LxT)    | EN ISO 10319  | 10 kN/m <sup>2</sup> : 10 kN/m <sup>2</sup> |
| Elongation at break (LxT) | EN ISO 10319  | 50% ± 25 : 55% ± 25                         |

| GEOTEXTILE                           |              |   |
|--------------------------------------|--------------|---|
| Properties                           | Test Method  | DRENTEX PROTECT PLUS                        |
| Density                              | EN ISO 9864  | 100 g/m <sup>2</sup> ± 10                   |
| Tensile strength (LxT)               | EN ISO 10319 | 6 kN/m <sup>-1</sup> : 6 kN/m <sup>-1</sup> |
| Elongation at break (LxT)            | EN ISO 10319 | 55% ± 30 : 60% ± 30                         |
| Static punching (CBR method)         | EN ISO 12236 | 1000 N ± 115                                |
| Dynamic perforation (cone drop test) | EN ISO 13433 | 38 mm ± 6                                   |
| Water permeability                   | EN ISO 11058 | 100 Mm/s ± 40                               |
| Opening size                         | EN ISO 12956 | 95 microns ± 35                             |

Equus Industries Ltd. PO Box 601, Blenheim | Phone: 03 578 0214 | Email: admin@equus.nz | Web: www.equus.nz

The information in this product data sheet is based on our experience and testing. It represents the latest information available at the time of printing, but no guarantee of its accuracy is made or implied, nor responsibility taken for use to which this information may be put. We reserve the right to alter or up-date information parameters and formulations at any time without notice.

# DRENTEX PROTECT PLUS

## High strength drainage panel

January 2025

### PROPERTIES (Continued):

| DRAINAGE CAPACITY              |                          |                      |
|--------------------------------|--------------------------|----------------------|
| Properties                     | Pressure                 | DRENTEX PROTECT PLUS |
| Vertical drainage (i = 1)      | At 20 kN/m <sup>2</sup>  | 1.6 l/m·s            |
|                                | At 50 kN/m <sup>2</sup>  | 1.3 l/m·s            |
|                                | At 100 kN/m <sup>2</sup> | 0.8 l/m·s            |
| Horizontal drainage (i = 0.1)  | At 20 kN/m <sup>2</sup>  | 0.4 l/m·s            |
|                                | At 50 kN/m <sup>2</sup>  | 0.25 l/m·s           |
|                                | At 100 kN/m <sup>2</sup> | 0.18 l/m·s           |
| Horizontal drainage (i = 0.04) | At 20 kN/m <sup>2</sup>  | 0.25 l/m·s           |
|                                | At 50 kN/m <sup>2</sup>  | 0.18 l/m·s           |
|                                | At 100 kN/m <sup>2</sup> | 0.1 l/m·s            |

### INSTALLATION PROCEDURE:

#### SUBSTRATE

- No work should be started until the substrate is firm, even, clean and free of loose materials or any construction debris on the surface.
- Substrate must have minimum 1% fall to ensure that water drains to drainage outlets.
- Commencement of installation shall be taken as acceptance of the substrate by the Applicator.

#### INSTALLATION

- The substrate must be firm, even, clean and free from loose materials or any construction debris on surface.
- Install DRENTEX PROTECT PLUS with the geotextile facing the backfill or soil retention system.
- DRENTEX PROTECT PLUS must be supported and follow the irregularities of the substrate.
- DRENTEX PROTECT PLUS can cover cracks and holes from 25 to 50 mm in width and depth. Cracks or holes in the substrate exceeding these measurements should be repaired with mortar, shotcrete or plywood (mechanically fastened to the substrate) prior to installing the drainage panel.
- DRENTEX PROTECT PLUS rolls are overlapped by unsticking 10 cm of geotextile mat from both edges, nesting the dimples, i.e. fitting one into the other, and then re-protecting with the unstuck geotextile mat.
- Fasten DRENTEX PROTECT PLUS using mechanical anchors adapted to the substrate and washers with a minimum diameter of 25 mm.
- At the top, DRENTEX PROTECT PLUS must be mechanically fixed by Equus Termination Bar. The profile Equus Termination Bar avoids contamination on the chamber created by the DRENTEX PROTECT PLUS.
- On the bottom of the wall it will be advisable to install a drainage pipe.
- Lastly, compact the surrounding soil to ensure optimum and correct drainage.

For complete information on product installation, please consult your Equus Representative.

#### STORAGE AND HANDLING:

Rolls must be stored in the delivery packaging, in a dry and protected environment.

#### STATEMENT OF RESPONSIBILITY:

The technical information and application advice given in this publication is based on the present state of our best knowledge. As the information herein is of a general nature, no assumption can be made as to a product's suitability for a particular use or application and no warranty as to its accuracy, reliability or completeness either expressed or implied is given other than those required by Commonwealth or State Legislation. The owner, their representative or the contractor is responsible for checking the suitability of products for their intended use.

Equus Industries Ltd. PO Box 601, Blenheim | Phone: 03 578 0214 | Email: admin@equus.nz | Web: www.equus.nz

The information in this product data sheet is based on our experience and testing. It represents the latest information available at the time of printing, but no guarantee of its accuracy is made or implied, nor responsibility taken for use to which this information may be put. We reserve the right to alter or up-date information parameters and formulations at any time without notice.

# DRENTEX PROTECT PLUS

## High strength drainage panel

January 2025

### WARNINGS AND BANS:

|  |    |
|--|----|
| Is the building product/building product line subject to warning or ban under section 26 of the Building Act 2004? | No |
|--|----|

### MANUFACTURERS CONTACT DETAILS:

|  |   |
|--|---|
| Manufacture location                   | Spain   |
| Legal and trading name of manufacturer | Soprema New Zealand Limited   |
| Manufacturer address for service       | Level 3, Candida Building 4, 61 Constellation Drive, Mairangi Bay, Auckland 0630, New Zealand |
| Manufacturer website                   | www.soprema.com.au  |
| Manufacturer email                     | info@soprema.com.au   |
| Manufacturer phone number              | +61 3 9221 6230   |
| Manufacturer NZBN                      | 9429050312962   |



Equus Industries Ltd. PO Box 601, Blenheim | Phone: 03 578 0214 | Email: admin@equus.nz | Web: www.equus.nz

The information in this product data sheet is based on our experience and testing. It represents the latest information available at the time of printing, but no guarantee of its accuracy is made or implied, nor responsibility taken for use to which this information may be put. We reserve the right to alter or up-date information parameters and formulations at any time without notice.

# DANODREN H15 PLUS

## Drainage layer

June 2024

**DESCRIPTION:**

DANODREN H15 PLUS is a nodular sheet composed of high density polyethylene (HDPE) and joined to a non-woven geotextile of calendered polypropylene of 115 g/m<sup>2</sup>. Nodule height is 7.3 ± 0.2 mm. It is specially designed as a drainage layer and for protection of underground walls and slabs in contact with the ground.

**PACKAGING:**

| SPECIFICATIONS   | DANODREN H15 PLUS |
|------------------|-------------------|
| Rolls            | 15 x 2.1 m        |
| Nodule height    | 7.3 mm            |
| Roll surface     | 42 m <sup>2</sup> |
| Rolls per pallet | 6                 |

**STANDARDS AND CERTIFICATION:**

CE Marking: 2008 Certificate Number CPF: 0099/CPD/A42/0053

European standard EN 13252

The product fulfills the requirements established on the above mentioned norms, for the following applications: "F+S+R+D"  
Filtration, Separation, Resistance and Drainage.

**WARNING:**

The information that appears in this document makes reference to the uses and utilities of Danosa's products and systems, and it is based on the knowledge that has been learnt until present, by Danosa. This is only possible if products have been stored and used in an appropriate way. Danosa is not responsible for unsuitable uses of the products or any other factors, such as meteorological facts, so Danosa is only responsible for the quality related to the provided products. Danosa reserves the right to carry out modifications without previous notice.

The values that appear in this technical sheet are the results of the tests that have been performed in our laboratory as at March 2007.

**TECHNICAL DATA:**

| Properties   | Value            | Unit              | Standard         |
|--|------------------|-------------------|------------------|
| Longitudinal tensile strength  | 15.0, -2.0       | kN/m              | UNE EN ISO 10319 |
| Transversal tensile strength   | 14.0, -2.0       | kN/m              | UNE EN ISO 10319 |
| Longitudinal elongation at break   | 100, ±20         | %                 | UNE EN ISO 10319 |
| Transversal elongation at break  | 70, ±20          | %                 | UNE EN ISO 10319 |
| Puncture resistance (CBR)  | 2.5, -0.5        | kN                | UNE EN ISO 12236 |
| Dynamic perforation test   | 16, +3           | Mm                | UNE EN 918       |
| Water permeability   | 0.0614, -0.00921 | m/s               | UNE EN ISO 11058 |
| Drainage capacity (i=0.1) in the plane of the geocomposite (at 100Kpa compression) | 0.44             | l/m.s             | UNE EN ISP 12958 |
| Opening size (geotextile)  | 160, ±30         | µm                | UNE EN ISO 12956 |
| Compression resistance   | 180, ±20%        | KN/m <sup>2</sup> | UNE EN ISO 604   |
| Modules of elasticity  | 1500             | N/mm <sup>2</sup> | ISO 178          |
| Water absorption   | 1                | Mg/4d             | DIN 53495        |
| Temperature range in use   | -30 a 80         | °C                | -                |
| Air volume between nodules, approx.  | 5.9              | l/m <sup>2</sup>  | -                |

Equus Industries Ltd. PO Box 601, Blenheim | Phone: 03 578 0214 | Email: admin@equus.nz | Web: www.equus.nz

The information in this product data sheet is based on our experience and testing. It represents the latest information available at the time of printing, but no guarantee of its accuracy is made or implied, nor responsibility taken for use to which this information may be put. We reserve the right to alter or up-date information parameters and formulations at any time without notice.

# DANODREN H15 PLUS

## Drainage layer

June 2024

### HEALTH AND SAFETY:

For more information see relevant Safety Data Sheet (SDS).

### WARNINGS AND BANS:

|  |    |
|--|----|
| Is the building product/building product line subject to warning or ban under section 26 of the Building Act 2004? | No |
|--|----|

### MANUFACTURERS CONTACT DETAILS:

|  |  |
|--|--|
| Manufacture location                   | Spain  |
| Legal and trading name of manufacturer | Danosa   |
| Manufacturer address for service       | Poligono Industrial Sector 9, 19290 Fontanar, Guadalajara, Spain |
| Manufacturer website                   | www.danosa.com   |
| Manufacturer email                     | info@danosa.com  |
| Manufacturer phone number              | +34 949 88 82 10   |

Equus Industries Ltd. PO Box 601, Blenheim | Phone: 03 578 0214 | Email: admin@equus.nz | Web: www.equus.nz

The information in this product data sheet is based on our experience and testing. It represents the latest information available at the time of printing, but no guarantee of its accuracy is made or implied, nor responsibility taken for use to which this information may be put. We reserve the right to alter or up-date information parameters and formulations at any time without notice.

# EQUUS TERMINATION BAR

July 2024

## DESCRIPTION:

The Equus Termination Bar is a pre-manufactured profile that terminates the waterproofing membrane at the wall in a professional and watertight, wind-peel resistant manner with the addition of 50 mm flange for securing drainage board.

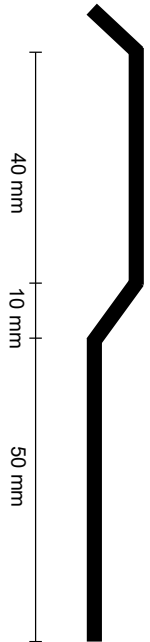
The Equus Termination Bar is used at concrete or wooden walls and curbs.

## GENERAL USE:

Tanking situations where backfill covers membrane and termination bar.

## ADVANTAGES:

- Increases the durability of the waterproofing system.
- Increases the bonding of the waterproofing to the wall or curb.
- Wind-peel resistant.
- Corrosion resistant.
- Continuous quality.
- Provides an aesthetical, straight finishing.
- Provides a dripping point off the wall.
- Predrilled holes
- Lip for securing drainage layer.



## TECHNICAL DATA:

| Characteristics  |   |
|------------------|---|
| Material         | Extruded aluminium profile (Al Mg Si 0.5 F22 quality) |
| Tensile strength | 215 N/mm <sup>2</sup>                                 |
| Yield point      | 160 N/mm <sup>2</sup>                                 |
| Elongation       | 10%   |
| Hardness         | 70 brinell  |
| Length           | 2400 mm   |
| Width            | 110 mm  |
| Colour           | Metallic  |
| Thickness        | 2 mm  |
| Predrill         | 200 mm  |

## INSTALLATION:

- The waterproofing is installed according to manufacturers details.
- The Equus Termination Bar is fastened at the edge of the waterproofing membrane into the wall.
- The space created at the top of the Equus Termination Bar is filled with a sealant compatible to the wall's material, bitumen and aluminium. Equus recommends Alsan Mastic 2000.

## WARNINGS AND BANS:

|  |    |
|--|----|
| Is the building product/building product line subject to warning or ban under section 26 of the Building Act 2004? | No |
|--|----|

Equus Industries Ltd. 4 Sheffield St, Blenheim 7274 | Phone: 03 578 0214 | Email: info@equus.nz | Web: www.equus.nz

The information in this product data sheet is based on our experience and testing. It represents the latest information available at the time of printing, but no guarantee of its accuracy is made or implied, nor responsibility taken for use to which this information may be put. We reserve the right to alter or up-date information parameters and formulations at any time without notice.



# EQUUS TERMINATION BAR

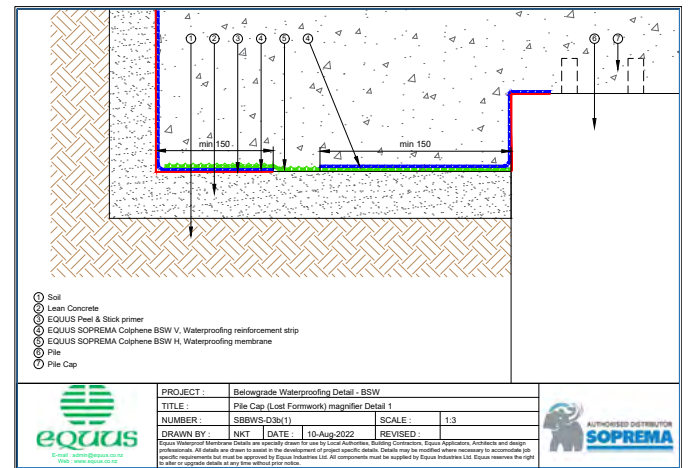
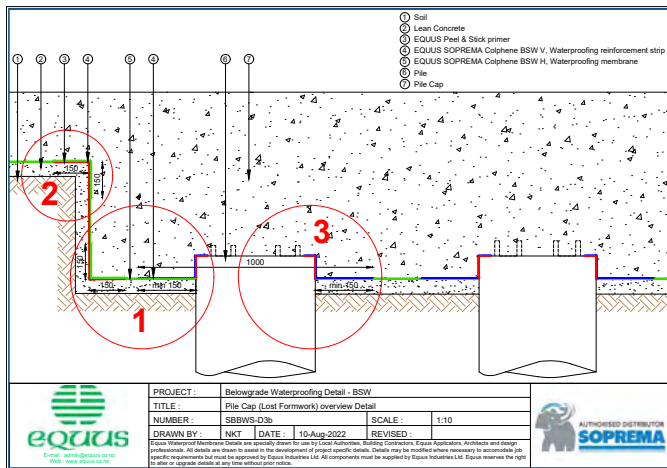
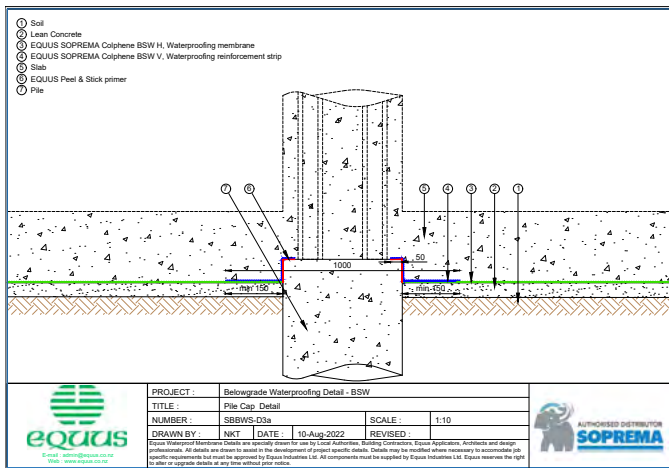
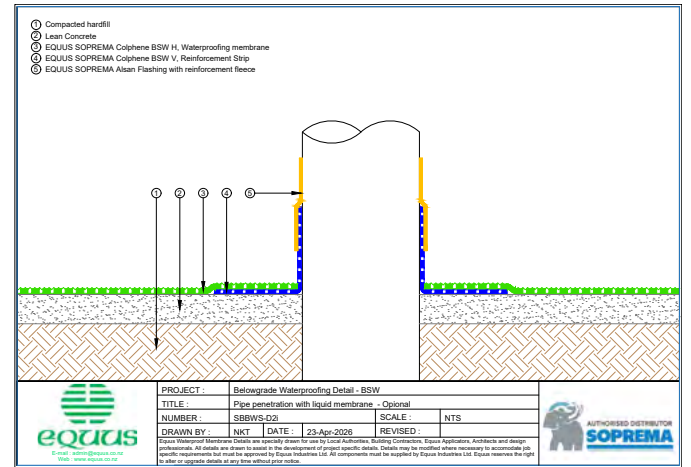
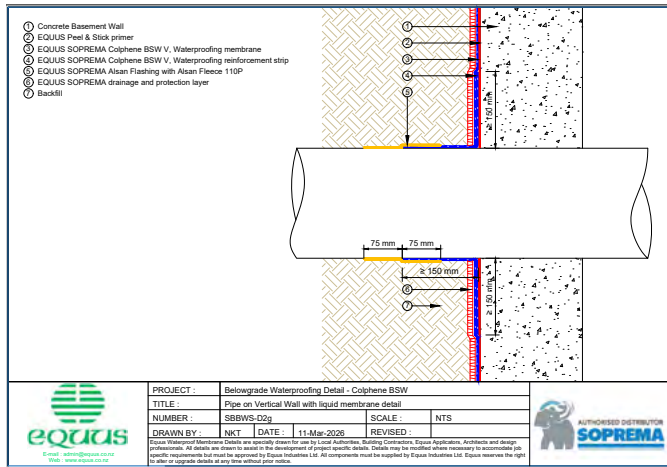
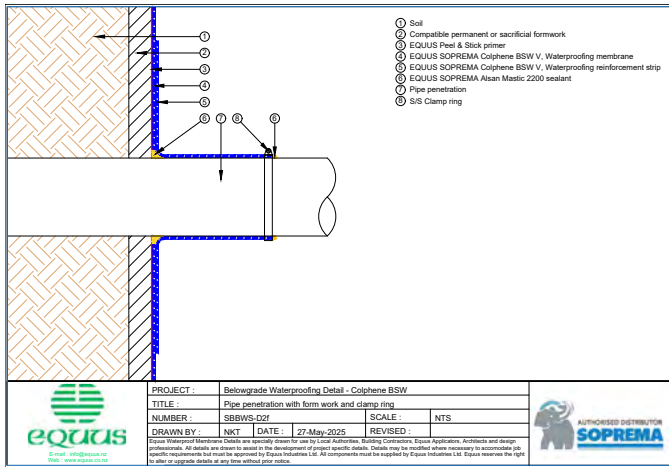
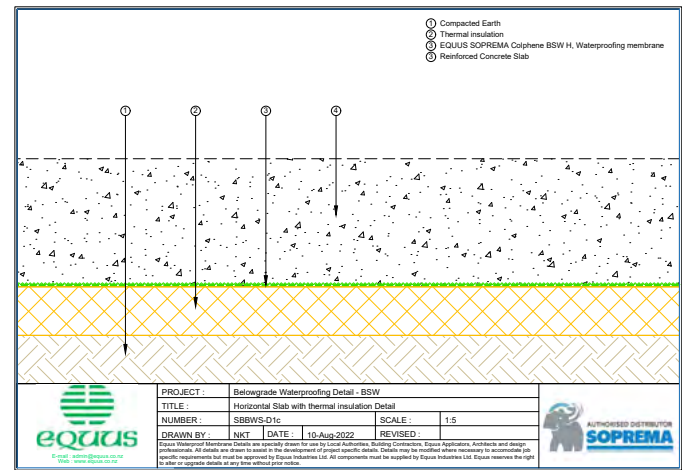
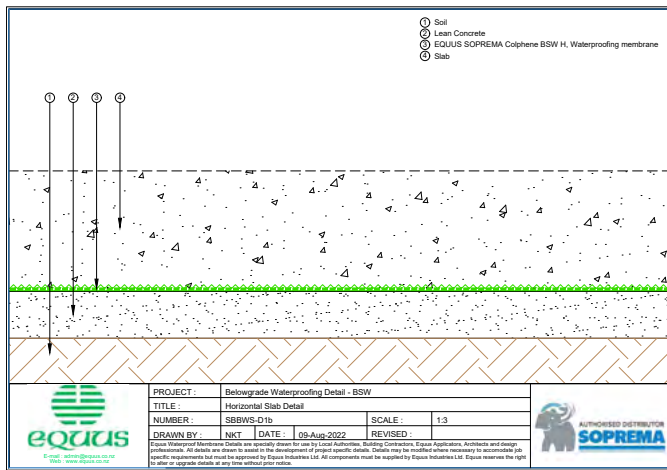
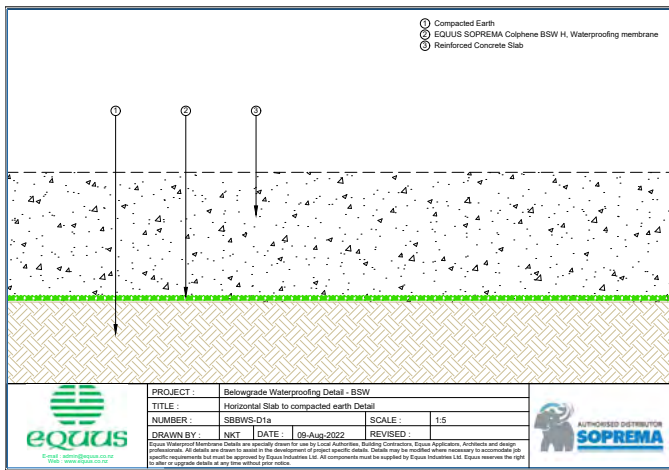
July 2024

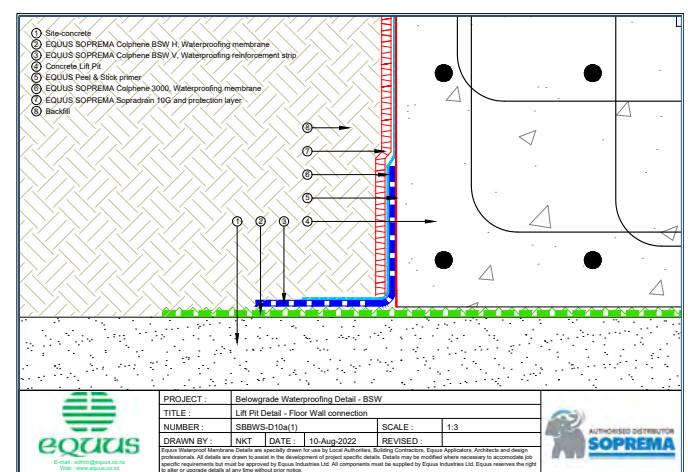
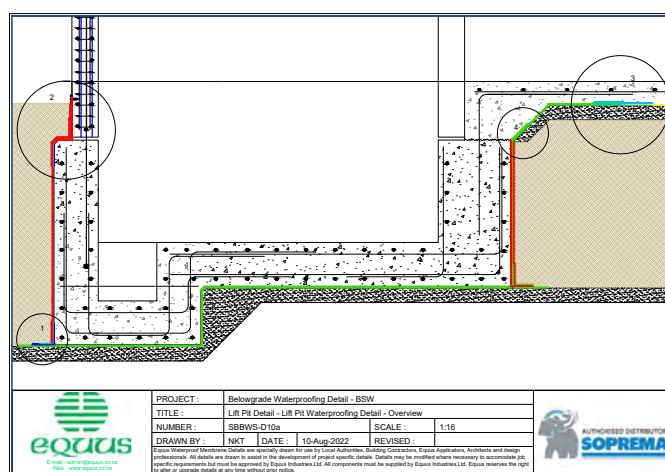
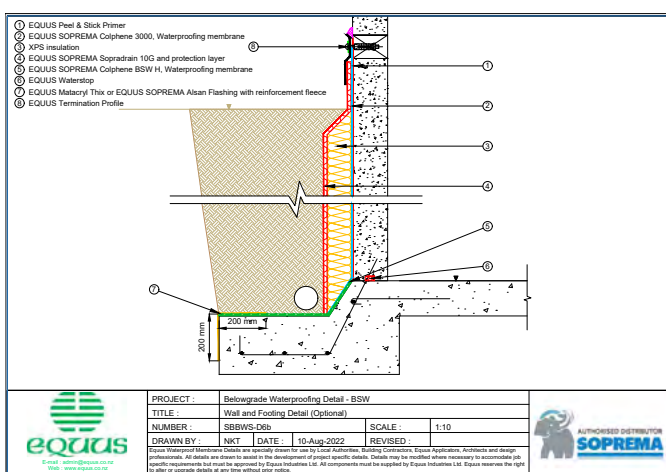
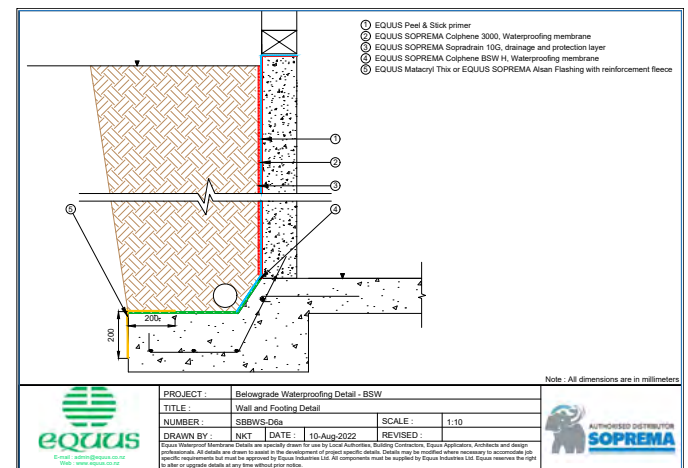
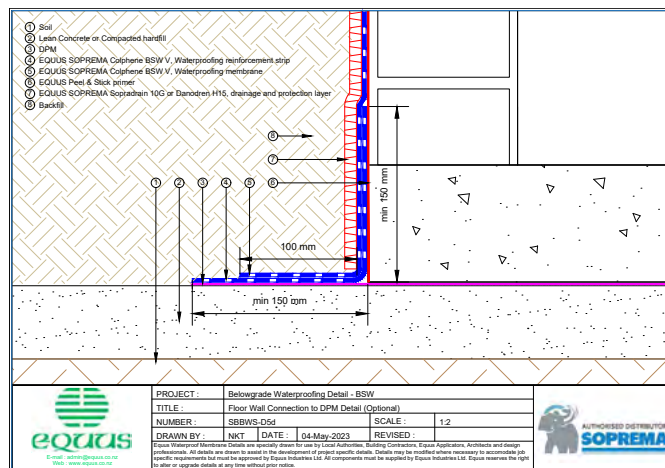
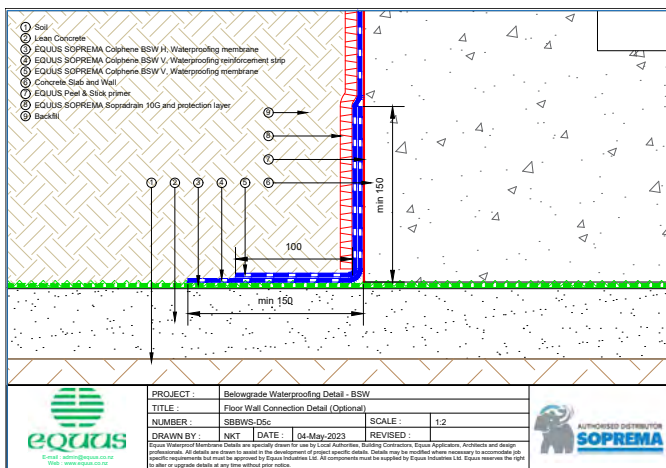
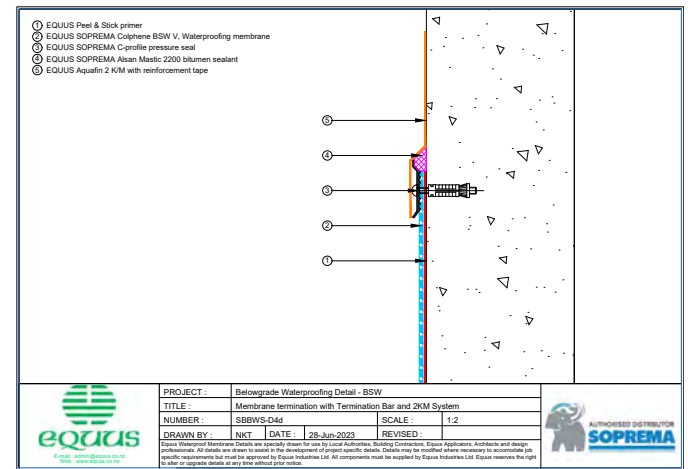
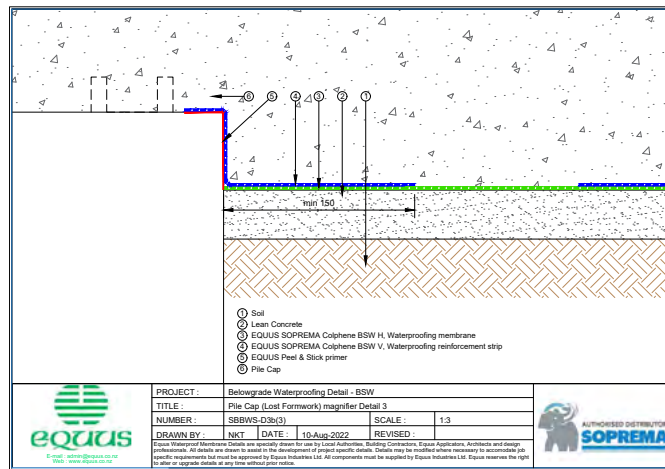
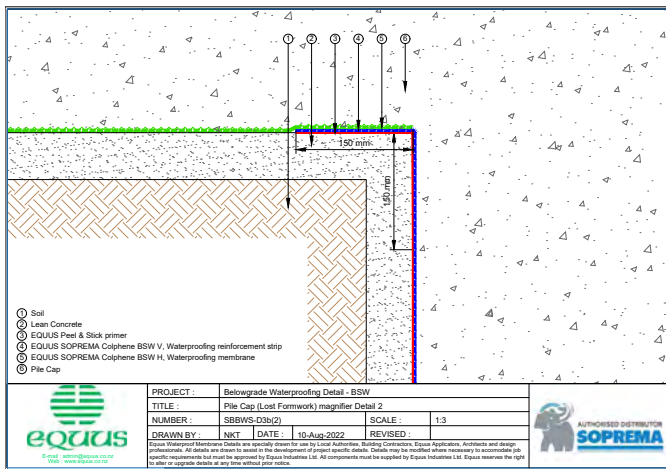
**MANUFACTURERS CONTACT DETAILS:**

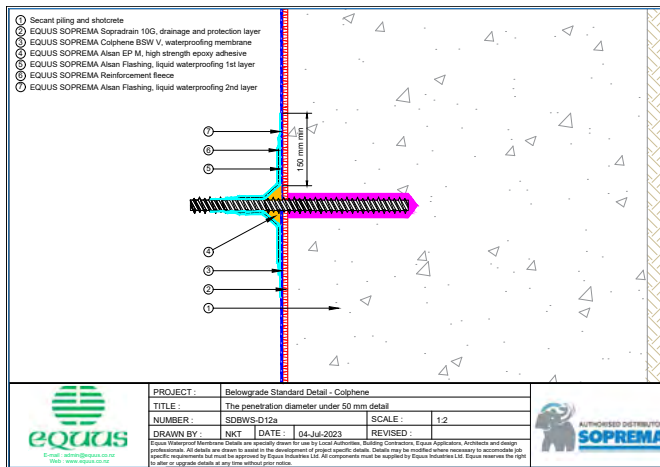
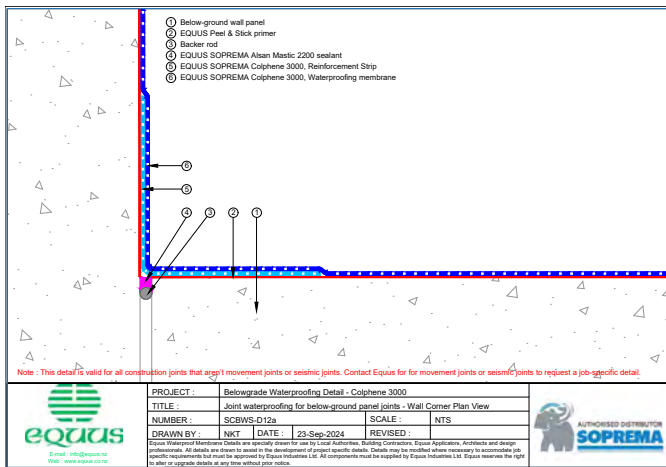
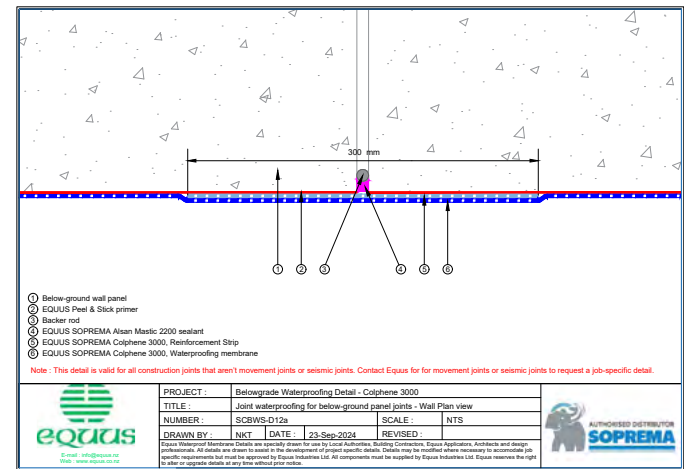
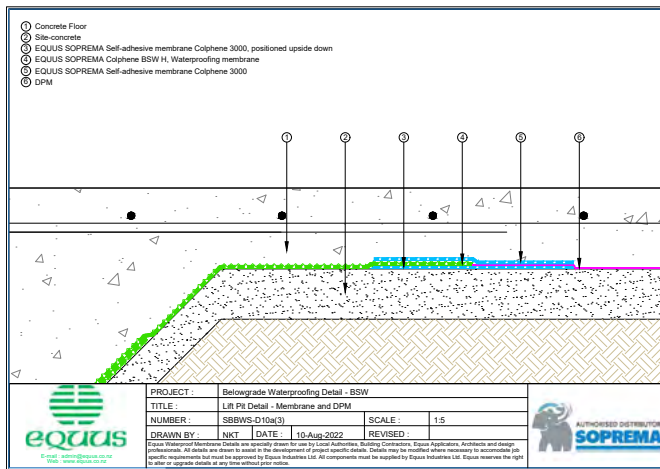
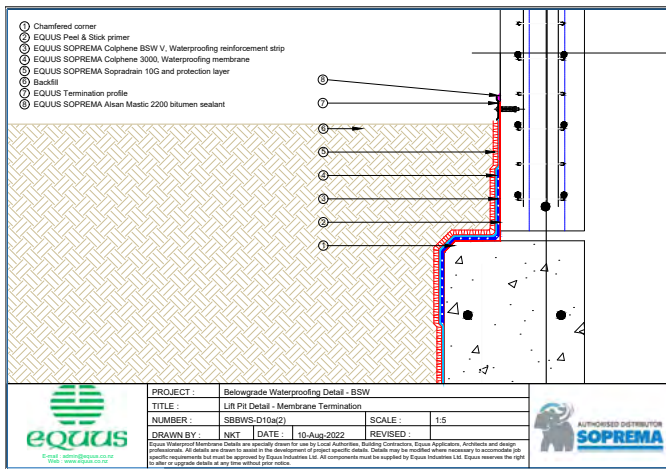
|  |  |
|--|--|
| Manufacture location                   |  |
| Legal and trading name of manufacturer |  |
| Manufacturer address for service       |  |
| Manufacturer website                   |  |
| Manufacturer email                     |  |
| Manufacturer phone number              |  |
| Manufacturer NZBN                      |  |

Equus Industries Ltd. 4 Sheffield St, Blenheim 7274 | Phone: 03 578 0214 | Email: [info@equus.nz](mailto:info@equus.nz) | Web: [www.equus.nz](http://www.equus.nz)

The information in this product data sheet is based on our experience and testing. It represents the latest information available at the time of printing, but no guarantee of its accuracy is made or implied, nor responsibility taken for use to which this information may be put. We reserve the right to alter or up-date information parameters and formulations at any time without notice.







# WHO ARE WE?

Equus Industries provides technical waterproofing solutions for Architects, Engineers, Property Managers, and Contractors in the building industry. One system does not fit all.

Equus can provide complete solutions, systems, specifications, technical support and warranties.

Equus is the Authorised Distributor for SOPREMA in New Zealand. SOPREMA was founded in 1908 in France and has over 100 factories worldwide producing waterproofing materials and thermal insulation.



## Equus Southern

Unit 6/100 Fitzgerald Ave  
Christchurch

Ph: 03 353 2434

southern@equus.nz

## Equus Central

45 Hutt Rd, Petone  
Wellington

Ph: 04 576 0333

central@equus.nz

## Equus Northern

211 Archers Rd, Wairau Valley,  
Glenfield, Auckland

Ph: 09 415 4314

northern@equus.nz

## Find us on:



EBOSS

SMARTSPEC

masterspec

ARCHIPRO

archify

[www.equus.nz](http://www.equus.nz)