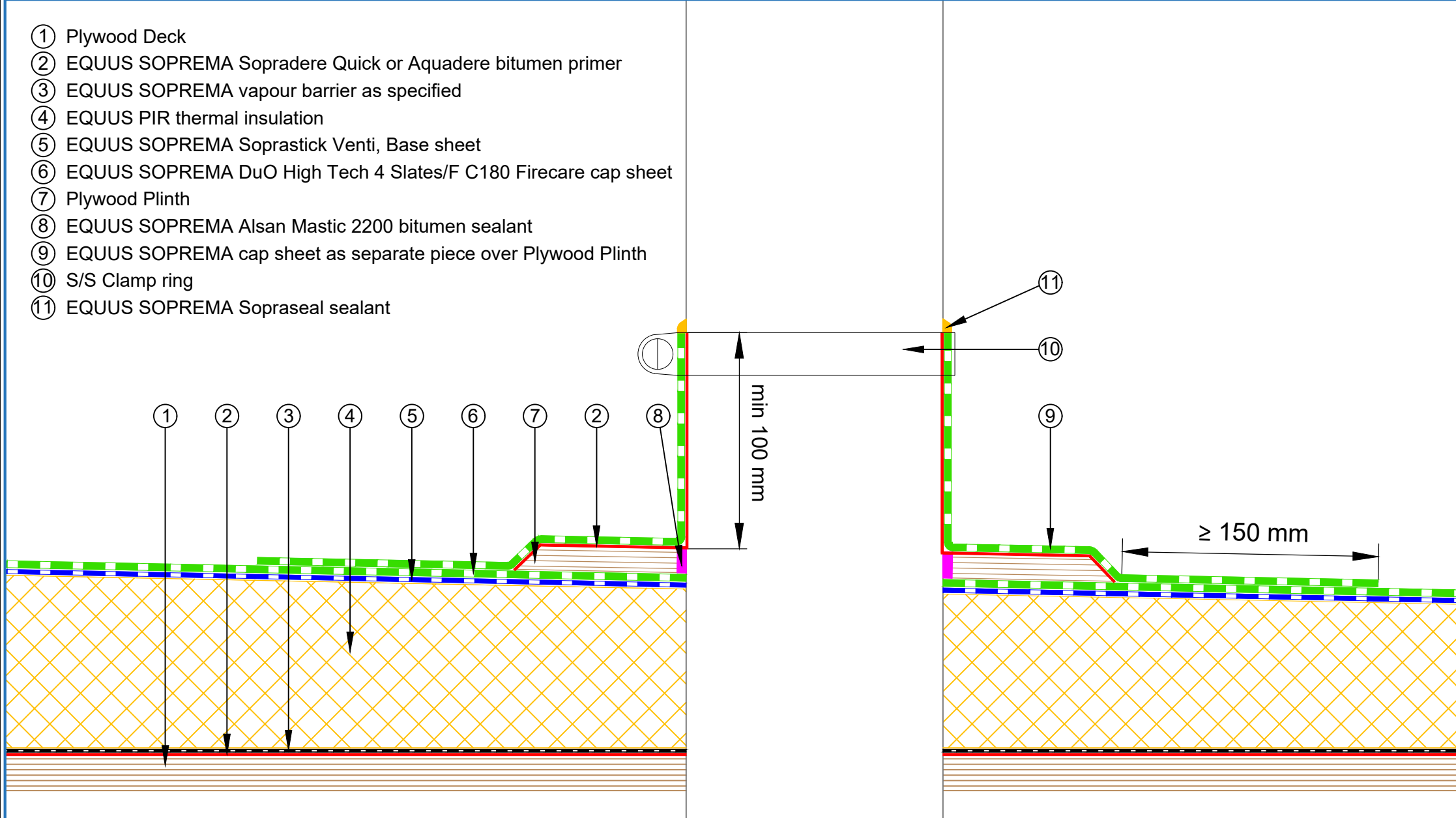


- ① Plywood Deck
- ② EQUUS SOPREMA Sopradere Quick or Aquadere bitumen primer
- ③ EQUUS SOPREMA vapour barrier as specified
- ④ EQUUS PIR thermal insulation
- ⑤ EQUUS SOPREMA Soprastick Venti, Base sheet
- ⑥ EQUUS SOPREMA DuO High Tech 4 Slates/F C180 Firecare cap sheet
- ⑦ Plywood Plinth
- ⑧ EQUUS SOPREMA Alsan Mastic 2200 bitumen sealant
- ⑨ EQUUS SOPREMA cap sheet as separate piece over Plywood Plinth
- ⑩ S/S Clamp ring
- ⑪ EQUUS SOPREMA Sopraseal sealant



E-mail : info@equus.nz
 Web : www.equus.nz

PROJECT :	Warm Roof on Plywood Standard Detail - DuO				
TITLE :	Standard Pipe or SHS penetration with clamp ring				
NUMBER :	SDWRP-D3d			SCALE :	NTS
DRAWN BY :	NKT	DATE :	06-Oct-2025	REVISED :	11-May-2026

Equus Waterproof Membrane Details are specially drawn for use by Local Authorities, Building Contractors, Equus Applicators, Architects and design professionals. All details are drawn to assist in the development of project specific details. Details may be modified where necessary to accommodate job specific requirements but must be approved by Equus Industries Ltd. All components must be supplied by Equus Industries Ltd. Equus reserves the right to alter or upgrade details at any time without prior notice.

