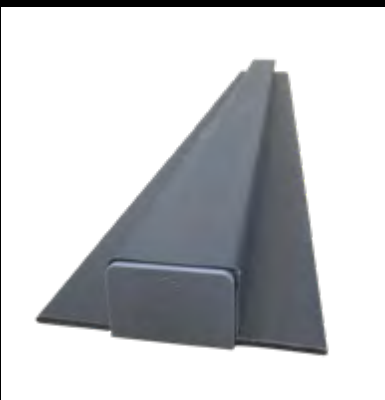




**equus**

# EQUUS WATERPROOFING ACCESSORIES 2025



ROOFING | TANKING | INSULATION | FLOORING | COATINGS | CONCRETE REPAIR



All projects that require a materials warranty must be completed using accessories supplied by Equus Industries Ltd. Any variation could result in the warranty not being issued at the completion of the project, unless prior written approval by an Equus Technical Consultant has been obtained.

Equus Industries will regularly assess their accessory portfolio to ensure the best options available globally are in the range and will work with the client to offer the best solution.

Equus Industries endeavors to have sufficient stock levels available at all times, although placing orders as early as possible is recommended. Please call your local Equus branch for technical support.

Thank you for your support,  
The team at Equus Industries Ltd.

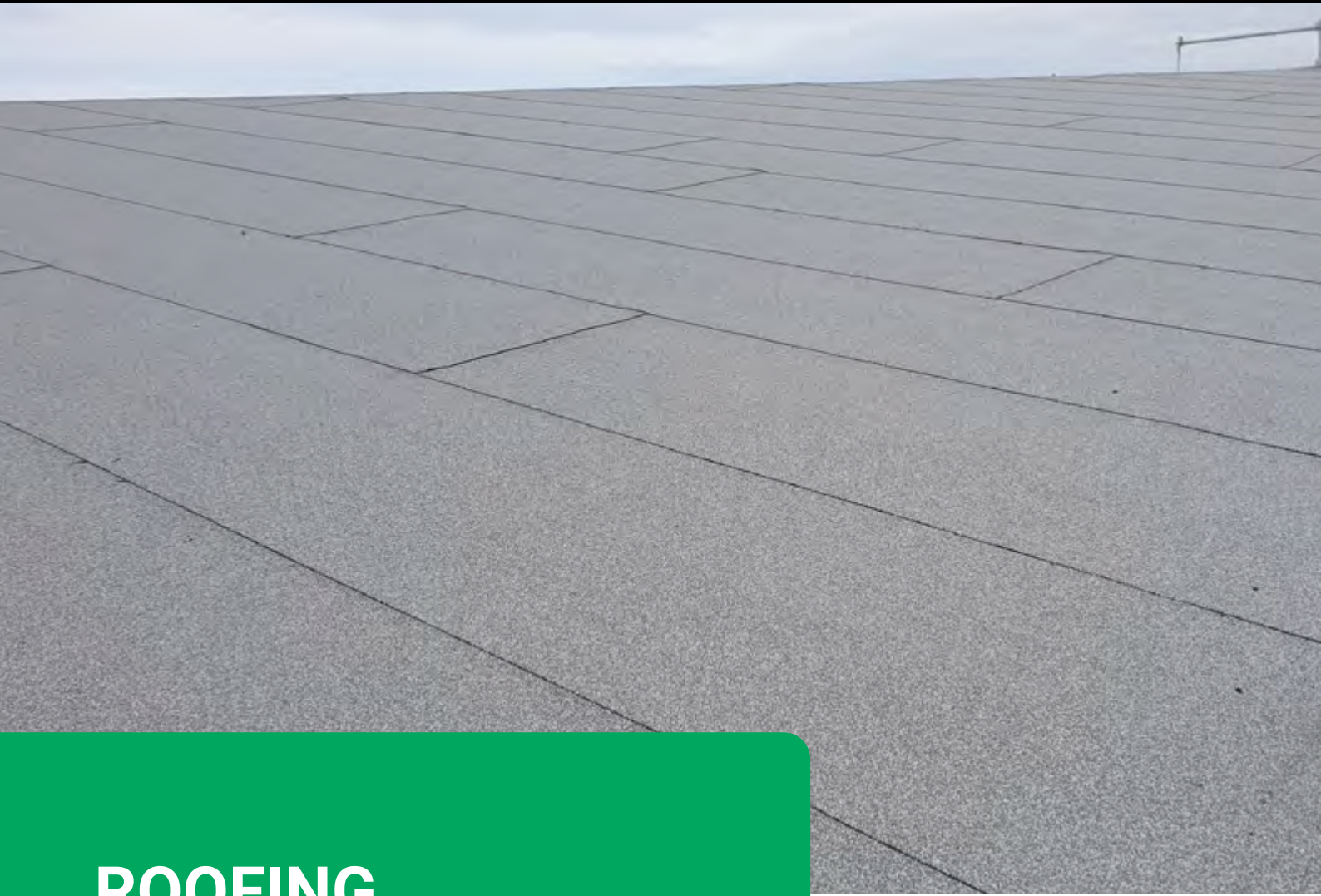
# Contents

<b>Roofing Accessories</b>			<b>4</b>
SOPREMA Shrink Sleeve	Unifix PermaBase DEK	SOPREMA ALSAN FLASHING	
SOPREMA Bitumen Angle Fillets	Georgia-Pacific DensDeck	SOPREMA POLYFLEECE	
SOPREMA EASY FOAM	Kraitec Step	SOPREMA EASY FLASHING	
SOPREMA SOPRASPRAY	SOPREMA ALSAN FLASHING QUADRO	Tremco Matacryn Thix	
SOPREMA DUO Slates	SOPREMA ALSAN FLEECE 110 P	SOPRASOLAR FIX EVO TILT System	
<b>TPO Accessories</b>			<b>9</b>
Equus TPO Adhesive	SOPREMA Pre-punched Galvanised Bar	SOPREMA Strip/Termination Strip	
SOPREMA Flexocol A89 Adhesive	SOPREMA Bar Protection End	SOPREMA Vapour Aerator/Pipe Collar/ 90° Internal/External Corners	
Citrus Cleaner	SOPREMA Flagmetal Sheet		
SOPREMA TPO Walkway Mat	SOPREMA Perimeter Profile		
SOPREMA TPO Walkway Supergrip	SOPREMA T-Bar		
<b>Fixplus</b>			<b>11</b>
<i>Full range of size available on request</i>			
<b>E-Curb Penetration Seal System</b>			<b>12</b>
<b>Sealants</b>			<b>13</b>
SOPREMA ALSAN MASTIC 2200	Tremco Dymonic 100	Tremco Tremflex 834	
SOPREMA SOPRASEAL	Tremco Dymonic FC	Equus Backer Rod	
<b>Waterstops &amp; Drainage</b>			<b>15</b>
Schomburg Aquafin CJ6	Equus Swellseal		
Schomburg Aquafin CJ4	Equus Drainage & Protection Mat		
<b>Termination Bars</b>			<b>16</b>
SOPREMA C-Profile	WMAI M.A. Drip Edge	SOPREMA Duo Edge Trim Internal and External Corner	
Equus Termination Bar	SOPREMA Duo Edge Trim		
<b>Cleaners</b>			<b>17</b>
Equus Delta Force + Nano	Equus Mosskill	Tremco Matacryn 405	
Equus Ferroclean	Equus Xylol		
<b>Guardian Fasteners &amp; Tools</b>			<b>18</b>
RBS50 Tubes	SP-8240-S4 Plate	Drill Bit Extenders	
R75 Tubes	Screws for Concrete, Metal and Plywood	Screw Bit	
ASTL75 Tube & Screw Combo	PIR & Concrete Drill Bit	Screw Bit Extenders	
SP-70-S4 Plate			
<b>SealBoss Concrete Solutions</b>			<b>20</b>
1510 Waterstop Foam	4040LV Epoxy Resin	P2002 Drill Pump	
1570 Flexible Waterstop Foam	Surface Ports	P3003-2C Injection Pump	
FlexGel <sup>2</sup>	4500 Epoxy Gun	Parts and Accessories	
R70 Pump Flush	4040 Epoxy Cartridge Gun	P2002 Hose	
Injection Packers	Polyurethane Hand Operated Gun	P3003 Pressure Hose	
4500F Epoxy Paste	Static Mixers		
<b>Goss Torch Range</b>			<b>23</b>
Proflame Torch Kit	EP-80G Gas Regulator	MP-2-5 Flint Refill	
AP-140M Large Torch	BPC-6 Torch Head	Torch Stand	
AP-45 Small Torch	BPC-5 Torch Head	Quick Fix Cuppling	
HEF-25 Propane Hose	MP-1 Striker		
<b>Outlets</b>			<b>26</b>
Aquaknight Membrane Roof Drains	Aquaknight Stainless Steel Drains		
Aquaknight Membrane Deck Drains	Roof Sump Outlet and Overflow		
<b>Scuppers &amp; Vents</b>			<b>27</b>
Short Roof Vent	Plastic Scupper		
Stainless Steel Scupper	Plastic Overflow		

# ROOFING ACCESSORIES

Equus holds and sources a range of roofing accessories to compliment their roofing membranes.

If you cannot find what you are looking for please contact your local consultant to discuss your project requirements.



## Roofing Accessories

### Shrink Sleeve

Combines a PVC sleeve, flange and base to create a professional and innovative accessory to make flat roof penetrations watertight. Shrinks when heated with hot air or flame.

**Supplied in:** • 22mm - 110mm PVC diameter



### Bitumen Angle Fillets

Pre-fabricated, triangular angle fillet of rubber modified bitumen. For use between horizontal and vertical parts and details. It is compatible to all De Boer waterproofing membranes.

**Supplied in:** • 1.2m Strip



### Easy Foam

Rapid curing, gun-grade polyurethane adhesive developed to bond insulation to vapour barriers and bituminous waterproofing membranes.

**Supplied in:** • 750ml Can • Application gun available and sold separately



### Sopraspray

Solvent-based primer in an easy to use can, designed for detailing, metals and small interventions. A quick drying pre-treatment to ensure optimal adhesion of the waterproofing membrane.

**Supplied in:** • 600ml Can



### Duo Slates

Mineral Chip used to scatter over membrane joints for a uniform appearance.

**Colours:** • GW (Grey White) • WGG (White, Grey, Green) • NOIR (Black)  
• BO (Brown Oxide)

**Supplied in:** • 5kg Pail • 30kg Bag



## Roofing Accessories

### PermaBase DEK

Light weight, easy to cut and fasten Roof Board that is very durable and will not rot, swell or disintegrate in the presence of moisture. Used to protect the PIR insulation of a warm roof system in heavy traffic areas.

**Supplied in:** • 1200mm x 2400mm Board Thickness 12.7mm (½ inch)



### DensDeck

DensDeck Roof Boards have proven their toughness and versatility. The unique construction has been shown to withstand delamination, deterioration, warping and job site damage far more effectively than paper-faced gypsum board and other conventional roofing products such as wood fiberboard and perlite.

**Supplied in:** • 1200mm x 2400mm Board Thickness 12.7mm (½ inch)

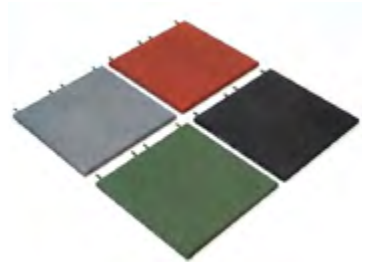


### Kraitec Step

A rubber granulate tile specifically designed for protection of waterproofing membranes on flat roofs (e.g. walkways for roof maintenance), balconies and terraces.

KRAITEC step is also used as a supporting underlay under systems installed on roofs (e.g. solar power units, antennas, etc.).

**Supplied in:** • 500mm x 500mm, 30mm high per tile



### Alsan Flashing Quadro

A single-component, root-resistant polyurethane resin for waterproofing roof junctions and details. Easy to prepare with no catalyst needed, its thixotropic consistency ensures simple application without primers on surfaces like concrete, wood, bitumen, PVC, and many metals. Ideal for high-end projects and maintenance, including termination flashings and penetration details. Compatible with Soprema mineral and sand-finished membranes. Recommended for use with Equus Soprema Duo Membranes.



**Supplied in:** • 5kg Pail

### Alsan Fleece 110 P/165 P

A non-woven polyester fleece, that is designed for use with ALSAN FLASHING QUADRO waterproofing resin. It acts as reinforcement, ensuring a minimum resin thickness for optimal performance. Together, they form a high-quality, flexible, and crack-bridging waterproofing system, delivering durable and reliable protection.

**Supplied in:** • 300mm Width x 50m Roll



## Roofing Accessories

### Alsan Flashing

A single-component polyurethane/bitumen resin for cost-effective, easy application. Suitable for roofing, decks, and underground waterproofing, it is perfect for termination flashings, penetrations, upstands, and maintenance. Compatible with Soprema bitumen membranes, as well as concrete, plywood, CLT, timber, masonry, metal, and PVC pipes. Not suitable for use on TPO.

**Supplied in:** • 19L Pail



### Polyfleece

A non-woven polyester reinforcement designed for use with ALSAN FLASHING products. It is applied in combination with ALSAN FLASHING products in various areas, including general roofing, green roofs, planter boxes, and foundations, to enhance durability and performance.

**Supplied in:** • 150mm Width x 30.4m Roll



### Easy Flashing

A single-component, water-based bituminous coating with excellent adhesion, even at low temperatures. Suitable for waterproofing, protecting, and sealing cracks on surfaces like plywood, metal, and cement. It can be applied with or without reinforcement (POLYFLEECE or Equus Fibreglass) and is ideal for renovating bitumen, metal, ceramic tile, and butyl rubber membranes when paired with an Equus topcoat. Compatible with Soprema bitumen membranes for roof detailing. Formerly known as SOPREMA Easygum.



**Supplied in:** • 310ml Cartridge • 5kg Can • 20kg Can



### Matacryn Thix

Highly elastomeric, thixotropic liquid waterproofing membrane system designed to be simple to apply, and highly flexible with excellent crack-bridging characteristics. Used in conjunction with Chevaline Dext Topcoat for membrane detailing.

*Please consult an Equus representative for best areas of use.*

**Supplied in:** • 25kg Drum • 2kg Pack





## Equus Soprasolar Fix Evo Tilt System (Bitumen/TPO)

A unique system for mounting solar energy solutions on bituminous and TPO waterproofing... and more!

Advice must be sought from Equus for each project in order to ensure that the solution is suited to the needs of the building.

*\*Full range of sizes and accessories available on request*

## TPO Accessories

### Equus TPO Adhesive

A natural rubber based, plasticiser resistant contact adhesive formulated bonding TPO and EPDM roofing membranes to substrates. An excellent choice for permanent bonding of TPO, EPDM and most other roofing membranes to a variety of substrates and is also suitable for a wide variety of applications involving laminating of plastic materials.

**Supplied in:** • 17kg Recyclable Canister



### Flexocol A89 Adhesive

Mono-component adhesive formulated with polyurethane, liquid with medium-low viscosity, moisture-curing, with controlled expansion. FLEXOCOL A89 is used for bonding of membranes FLAGON TPO or FLAGON PVC coupled to geotextile on horizontal surfaces.

**Supplied in:** • 12kg Can



### Citrus Cleaner

A high performance natural citrus based cleaner and degreaser formulated for removing a variety of adhesives and contaminants. Removes tape residue, cleans guns & tips, removes adhesive overspray, removes grease & tar, cleans up uncured adhesives, removes crayon & waterproof markers, removes dirt & scuff marks.

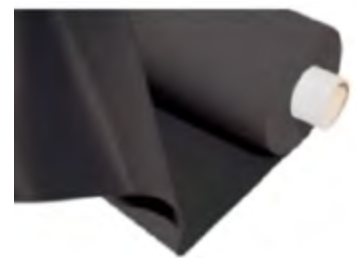
**Supplied in:** • 575ml Can



### TPO Walkway Mat

A membrane composed of modified polyolefin (TPO) and a polyester reinforcement. Used as an anti-slip finish. The membrane is distinguished by a very high resistance to weathering and UV-rays. The top has an embossed structure.

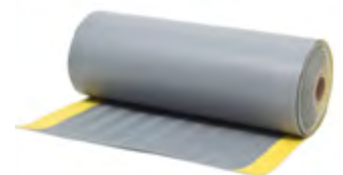
**Supplied in:** • 15m x 1m Roll



### TPO Walkway Supergrip

A non-reinforced protective sheet for walkways on roofs in combination with Flagon TPO/FPO roofing membranes. With embossed fishbone pattern.

**Supplied in:** • 15m x 0.76m Roll



## TPO Accessories

### Flagon Pre-punched Galvanised Bar

Supplied in: • 2m Length

### Flagon Bar Protection End

Supplied in: • 10cm Length 3.5cm Diameter



### Flagmetal Sheet

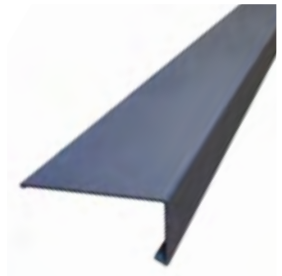
A modified polyolefin (TPO) membrane bonded to a galvanised steel sheet. FLAGMETAL is used for the realisation of custom made finishing elements of a roof such as flashings and profiles. It is distinguished by a high resistance to weathering and UV-rays.

Supplied in: • 2m x 1m Sheet



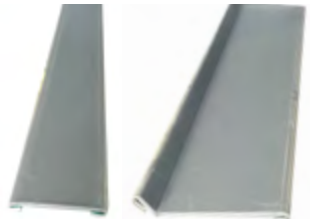
### Flagmetal Perimeter Profile

Supplied in: • 10.5cm x 5cm x 3m Length



### Flagmetal Strip / Termination Strip

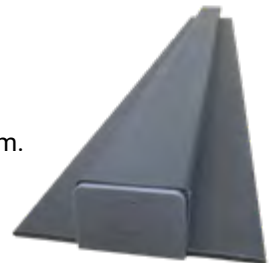
Supplied in: • 5cm x 2cm x 2m Length • 7cm x 2cm x 2m Length



### T-Bar

SOPREMA T-BAR provides a secure, non-invasive anchoring solution for flat roofs with single-ply membranes. With a TPO membrane and robust aluminium core, it enables safe mechanical fixing of components like cable trays and piping without penetrating or compromising the waterproofing system.

Supplied in: • 1m Length 12cm Wide



### Flagon Vapour Aerator

Supplied in: • 240mm

### Flagon Pipe Collar

Supplied in: • 80mm • 100mm

### Flagon 90° Internal/External Corners





## Fixplus Pedestal & Tile Support System

The Fixplus range consists of a series of pedestals for raised floor applications. Fully customisable to be compatible with multiple flooring materials, they are suitable for decking systems such as ceramic and natural stone tiles, and aluminium or wooden beams.

The pedestals come in a range of adjustable heights, basic or self-levelling, and with a range of accessories.

*\*Full range of sizes and accessories available on request*



## SOPREMA E-Curb Penetration Seal System

The SOPREMA E-Curb provides a simple, durable solution for sealing roof penetrations without the need for metal flashing. The system combines molded curbs, M-1 adhesive, and a pourable sealant to create watertight seals around pipes, cables, and irregular shapes. Quick to install, UV-stable, and resistant to ponding water, it ensures long-term waterproofing performance.



# Sealants

Equus Industries offers Sealants for nearly all situations within the construction industry.



## Alsan Mastic 2200

Black bituminous adhesive/sealant with permanent flexibility for superior adhesion. The bitumen provides very good UV resistance, fire resistance and extreme elasticity. Can also be used as a cold glue. Can be used on all SOPREMA Bitumen membrane systems where it is not exposed to the weather.

**Supplied in:** • 300ml Cartridge • 600ml Sausage



## Sopraseal Sealant

A fast-setting, moisture curing, low VOC, solvent-free, polyether adhesive-sealant. A bitumen compatible sealant.

**Supplied in:** • 600ml Sausage



## Dymonic 100

Highly versatile, high performance polyurethane sealant formulated to be durable and flexible with excellent adhesion in moving joints. Also has a unique capability to adhere to damp or green concrete. A facade or joinery sealant.

**Supplied in:** • 600ml Sausage



## Dymonic FC

Highly versatile, high performance, modified polyurethane sealant formulated to be durable and flexible with excellent adhesion in moving joints. A concrete panel sealant.

**Supplied in:** • 600ml Sausage



## Tremflex 834

Single component waterborne siliconized acrylic sealant formulated to give the right balance of hardness and flexibility with excellent UV resistance. Used on exposed areas where polyurethane may react with other components.

**Supplied in:** • 300ml Cartridge • 600ml Sausage





## Backer Rod

Closed cell polyethylene foam used as a backing filler in control joints or similar applications.

**Supplied in:** • 6mm - 50mm diameter • 25m - 50m rolls



# Waterstops & Drainage

For that extra protection in tanking situations, if you're not sure which one suits your installation just give your local Consultant a call.



## Aquafin CJ6

Thermoplastic expansive waterstop for the internal waterproofing of construction joints in concrete construction, where there is a constant or Intermittent exposure to ground water, run-off water or surface water.

**Supplied in:** • 25m Roll • 40m Roll



## Aquafin CJ4

Universally applicable bentonite joint waterstop with patented rain protection coating used for the waterproofing of construction joints being permanently or intermittently subject to ground, slope and surface water.

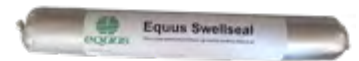
**Supplied in:** • 20m Roll



## Swellseal

High performance, single component, polyurethane based liquid waterstop designed to create a compression seal within construction joints, blocking water entry. It is a versatile, gunnable waterstop that swells up to 350% in volume when in contact with water.

**Supplied in:** • 600ml Sausage



## Equus Drainage & Protection Mat

Nodular sheet composed of high density polyethylene and a non woven geo textile, designed as a drainage and protection layer of underground walls and slabs. Can also be used as a drainage layer for planters and roof gardens.

**Supplied in:** • 15.1m x 1.8m Roll



## Drentex Protect Plus

high-strength drainage panel consisting of a high-density polyethylene (HDPE) core with a factory-laminated geotextile for installation over waterproofing membranes in most vertical and horizontal drainage applications.

**Supplied in:** • 20m x 2m Roll



# Termination Bars

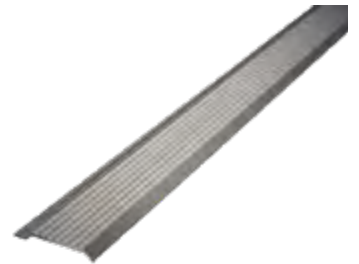
Our termination bars are compatible with all of our membranes and can be adapted to most installation requirements.



## C-Profile

Pre-manufactured profile that terminates the waterproofing membrane at the wall in a professional and watertight, wind-peel resistant manner. Used for concrete or wooden walls and curbs.

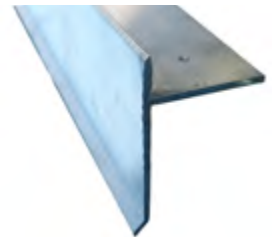
**Supplied in:** • 2.5m Lengths • 10 Lengths/pack



## M.A. Drip Edge

Made from the finest 2mm Aluminium. The design means a straight edge every time. The angle prevents warping or twisting. The pre-drilled holes mean quicker fixing with no drill swart to get into the membrane detailing.

**Supplied in:** • 3m Lengths • 5 Lengths/pack



## Duo Edge Trim

110/60 Aluminium edge trim used to define straight and clean lines around the roof perimeter for aesthetic appeal.

**Supplied in:** • 2.5m Lengths • 10 Lengths/pack



## Duo Edge Trim Internal and External Corner

110/60 Aluminium corner edge trim used to define straight and clean lines on the internal/external corner perimeter for aesthetic appeal.

**Supplied in:** • 490mm x 490mm



## Equus Tanking Termination Bar

A pre-manufactured profile that terminates the waterproofing membrane at the wall in a professional and watertight, wind-peel resistant manner with the addition of 50 mm flange for securing drainage board. Used in tanking situations where backfill covers membrane and termination bar.

**Supplied in:** • 2.4m Lengths



# Cleaners

Equus manufacture different cleaners and protectors for their membranes and others.



## Delta Force + Nano

Highly concentrated cleaner, degreaser and traffic film remover. Designed to be heavy duty and safe to use on paintwork and other surfaces.

**Supplied in:** • 5L Flagon



## Ferroclean

Mildly acidic paste for removing rust from ferrous metals and rust stains from many other surfaces.

**Supplied in:** • 4L Flagon • 10L Pail



## Mosskill

For neutralisation of most mosses, moulds and algae growth on common building surfaces. Can also be used as a penetrating inhibitive treatment before overcoating with waterborne Equus coatings.

**Supplied in:** • 1L Flagon • 4L Flagon • 20L Jerrican



## Xylol

Solvent-based thinners for most coating products and cleaner for most tools.

**Supplied in:** • 1L Can • 4L Can • 20L Pail



## Matacryn 405

Solvent-based smoothing aid for most Matacryn coatings and mortars. Also used as a cleaning agent for most tools.

**Supplied in:** • 4kg Can • 18kg Drum



# Fasteners & Tools

A wide variety of fasteners, fastening plates and associated tools for Roof boards, PIR and membranes.



## RBS50 Tubes

High performance tube to be used in conjunction with screws for mechanically fastening thermal insulation and the bitumen roofing membrane.

**Supplied in:** • Sizes range from 20mm - 330mm



## R75 Tubes

Standard tube to be used in conjunction with screws for mechanically fastening thermal insulation prior to the installation of the self adhesive bitumen roofing membrane.

**Supplied in:** • 60mm • 80mm



## ASTL75 Tube & Screw Combo

Telescopic tube and screw for mechanically fastening tapered thermal insulation on concrete roofs.

**Supplied in:** • Sizes range from 70/90mm - 340/460mm



## SP-70-S4 Plate

Metal pressure plates to be used in conjunction with screws for mechanically fastening thermal insulation.

**Supplied in:** • 70mm diameter



## SP-8240-S4 Plate

Metal pressure plates to be used in conjunction with screws for mechanically fastening through base sheet.

**Supplied in:** • 82 x 40mm





## Screws

High performance screws to be used in conjunction with tubes or plates for mechanically fastening of thermal insulation or bitumen roofing membrane.

- Supplied in:**
- CS61 for concrete
  - BS61 for metal
  - BSRF48 or EDS-SRB48 for plywood
  - Sizes range from 50mm - 120mm
  - Sizes range from 100mm - 150mm
  - Sizes range from 50mm - 120mm



## PIR & Concrete Drill Bit

Drill bit tool for mechanically fastening thermal insulation and bitumen roofing membrane.

- Supplied in:** • 35mm Bit Lengths • 45mm Bit Lengths • 55mm Bit Lengths



## Drill Bit Extenders

Extension arm tool for drill bits for mechanically fastening thermal insulation and bitumen roofing membrane.

- Supplied in:** • 300mm Lengths • 500mm Lengths



## Screw Bit

Screw bit tool for mechanically fastening thermal insulation and bitumen roofing membrane.

- Supplied in:** • Torx-M6 • Phillips



## Screw Bit Extenders

Extension arm tool for screw bits for mechanically fastening thermal insulation and bitumen roofing membrane.

- Supplied in:** • 300mm Lengths • 750mm Lengths



# SealBoss

A wide variety of water stop and leak sealing injecting foams and chemical grouting product solutions.



## 1510 Waterstop Foam

A hydrophobic water-activated, water cut-off grout and foam seal grout based on a MDI polyurethane. The resin is 100% solvent free and 100% solids. Must be used in conjunction with SealBoss 15x Accelerator. Upon contact with water 1510 reacts to a semi flexible foam while expanding its volume 30 to 40 times.

Supplied in: • 20L Pail • 15x Accelerator 2L Tin



## 1570 Flexible Waterstop Foam

A hydrophobic water-activated, water cut-off grout and foam seal grout based on a MDI polyurethane. The resin is 100% solvent free and 100% solids. Must be used in conjunction with SealBoss 15x Accelerator. Upon contact with water 1570 reacts to a very flexible foam while expanding its volume 6 to 25 times.

Supplied in: • 20L Pail • 15x Accelerator 2L Tin



## FlexGel<sup>2</sup>

A single component hydrophilic polyurethane grout. The product is capable of incorporating large amounts of water that are multiples of its own mass, thereby forming a waterproofing gel. The cure time of the product is determined by the amount of water added and the temperature.

Supplied in: • 20L Pail



## R70 Pump Flush

Solvent-free SealBoss pump cleaner and conditioner. Not aggressive for rubber and plastic parts and is safer for the pumping equipment. It offers many advantages over solvents on the jobsite for health and safety purposes.

Supplied in: • 20L Pail



## Injection Packers

Designed to safely and securely connect your Injection Equipment to the concrete substrate, in order to deliver the injection chemical resin – often under high injection pressures – to the area of repair.

Supplied in: • 115mm length • 200mm length



## SealBoss Range

Full range of crack injection and accessories available.

### 4500F Epoxy Paste

A 2-component, 100 % solids, high-strength, moisture-tolerant, structural, high modulus epoxy paste adhesive gel designed for placement of epoxy injection surface mounted ports, surface sealing of cracks in concrete and for use as an epoxy mortar binder. 4500 F meets ASTM C-881 Types I, II & IV, Grade 3, Classes B & C.



Supplied in: • 8L Can • 650ml Cartridge



### 4040LV Epoxy Resin

A 100% solids, himod, 2-component, moisture-tolerant, low-viscosity, high strength, multipurpose, epoxy injection resin adhesive designed for high strength repairs, epoxy injection and epoxy crack injection in concrete substrates such as floors, ceilings, walls, foundations and more. The epoxy adhesive can also be used for wood.



Supplied in: • 40L Pack • 6L Pack • 400ml Cartridge



### Surface Ports

Surface ports are designed to cover typical application conditions including smooth, rough and uneven concrete surfaces, corner injection and high pressure epoxy injection.



### 4500 Epoxy Paste Gun

Hand held dual cartridge injection gun.



### 4040 Epoxy Cartridge Gun

Hand held dual cartridge injection gun.



### Polyurethane Hand Operated Gun

A powerful and versatile injection hand pump suitable for small jobs and as a low cost back-up system. Very reliable and easy to maintain.



## SealBoss Range

Full range of crack injection and accessories available.

### Static Mixers

Available in a range of sizes for epoxy paste and crack injection products.



### P2002 Drill Pump

This extremely lightweight and powerful injection pump can be used for most of the SealBoss® polyurethane injection line products with viscosities between 10 and 1000 cps. Suitable for mid-size jobs and daily use this is the perfect machine for waterproofing contractors performing commercial work and residential injection.



### P3003-2C Injection Pump

The P3003-2C Injection Pump features a compact and sturdy design with integrated hoppers and stand. This lightweight and powerful injection pump can be used for dual component epoxy and/or polyurethane injection resin with viscosities between 10 and 1000 cps.



### Parts and Accessories

A wide range of parts and accessories for various pumps.



### P2002 Hose

Economic single component applicator hose set for use with zerk coupler and slide coupler/button head connector. Standard equipment for drill operated single component injection machine.

Supplied in: • 5m



### P3003 Pressure Hose

Heavy duty single component high pressure applicator hose.

Supplied in: • 3m





## GOSS TORCH RANGE

For reliability and cost effectiveness we stock and supply the Goss torch range to New Zealand. This range of torches are very popular overseas and here in New Zealand.



## Goss Torch Range

---

### AP-140M Large Torch

Professional propane torch for membrane roofing systems, with push button ignition tip, adjustable flame and torch stand.

**Supplied in:** • 66cm length with 55mm diameter tip



### AP-45 Small Torch

Professional propane torch for membrane detailing, with push button ignition tip, adjustable flame and torch stand.

**Supplied in:** • 35cm length with 35mm diameter tip



### HEF-25 Propane Hose

Propane hose with connections.

**Supplied in:** • 7.5m length



### EP-80G Gas Regulator

Gas regulator with adjustable gas flow.



### BPC-6 Torch Head

Replacement head with igniter for large propane torch.

**Supplied in:** • 50mm diameter



## Goss Torch Range

---

### BPC-5 Torch Head

Replacement head for small detail propane torch.

Supplied in: • 35mm diameter



### MP-1 Striker

Striker with flint for igniting propane torches.



### MP-2-5 Flint Refill

Replacement flints for Goss striker for propane torches.

Supplied in: • 5 per pack



### Torch Stand

Replacement torch stand.



### Quick Fix Cuppling

Made of a durable heat resistant brass so it can withstand intense temperatures.



# Outlets

Equus Industries partners with local manufacturers to ensure we can offer a full range of Outlets, Overflows, Scuppers and Drains to the New Zealand construction industry.



## Membrane Roof Drains

- Supplied in:**
- 100mm Inlet 80mm Outlet
  - 100mm Inlet 100mm Outlet
  - 150mm Inlet 150mm Outlet

All Roof Outlets can be installed as a drain or overflow. Multiple size options, and side exit outlets also available on request.



## Membrane Deck Drains

- Supplied in:**
- 100mm Inlet 80mm Outlet
  - 100mm Inlet 100mm Outlet

Multiple size options, and side exit outlets also available on request.



## Stainless Steel Drains

ROOF DRAIN

- Supplied in:**
- 80mm Inlet 80mm Outlet
  - 100mm Inlet 100mm Outlet
  - 150mm Inlet 150mm Outlet

DECK DRAIN

- Supplied in:**
- 80mm Inlet 80mm Outlet
  - 100mm Inlet 100mm Outlet

All Roof Outlets can be installed as a drain or overflow.

Some other size options available on request. Stainless steel range is Declare Label Listed and Red List Free.



## Roof Sump Outlet and Overflow



Sump



Drain Grate



Overflow Grate & Hat



Assembly

CUSTOM SUMP SIZES IN ALL CONFIGURATIONS  
OUTLET SIZES FROM 50MM TO 300MM



# Scuppers & Vents

If you can not find what you are looking for in here please contact you local Consultant for more information. If they have it we can get it.



## Short Roof Vent

	<b>100mm</b>
Flange Diameter	280
Downpipe Diameter	100
Cap Height	55
Total Height	110

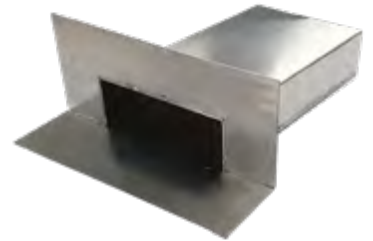
Compatible with all Equus waterproofing membrane systems.



## Stainless Steel Scupper 200mm x 75mm

Face Height	150
Face Width	350
Outlet Length	400
Aperture Height	75
Aperture Width	200

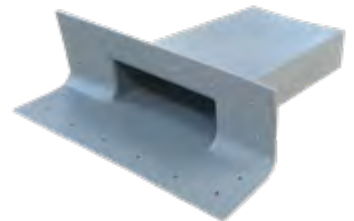
Compatible with all Equus waterproofing membrane systems.



## Plastic Scupper 200mm x 75mm

Face Height	150
Face Width	350
Outlet Length	400
Aperture Height	75
Aperture Width	200

Compatible with Equus Chevaline Dext membrane and Equus TPO membrane systems only.



## Plastic Overflow 200mm x 75mm

Face Height	200
Face Width	320
Outlet Length	400
Aperture Height	75
Aperture Width	200

Compatible with Equus Chevaline Dext membrane and Equus TPO membrane systems only.



\*Full range of sizes available on request. \*All measurements in mm.



## Who are we?

Equus Industries provides technical waterproofing solutions for Architects, Engineers, Property Managers, and Contractors in the building industry. One system does not fit all. Equus can provide complete solutions, systems, specifications, technical support and warranties.

---

### Equus Southern

Unit 6/100 Fitzgerald Ave,  
Christchurch

PO Box 19 846  
Christchurch

Ph: 03 353 2434

southern@equus.nz

### Equus Central

45 Hutt Rd, Petone,  
Wellington

PO Box 38 636  
Wellington Mail Centre

Ph: 04 576 0333

central@equus.nz

### Equus Northern

211 Archers Rd, Wairau Valley,  
Glenfield, Auckland

PO Box 101 423  
North Shore Mail Centre

Ph: 09 415 4314

northern@equus.nz

---

## Product Partners:

