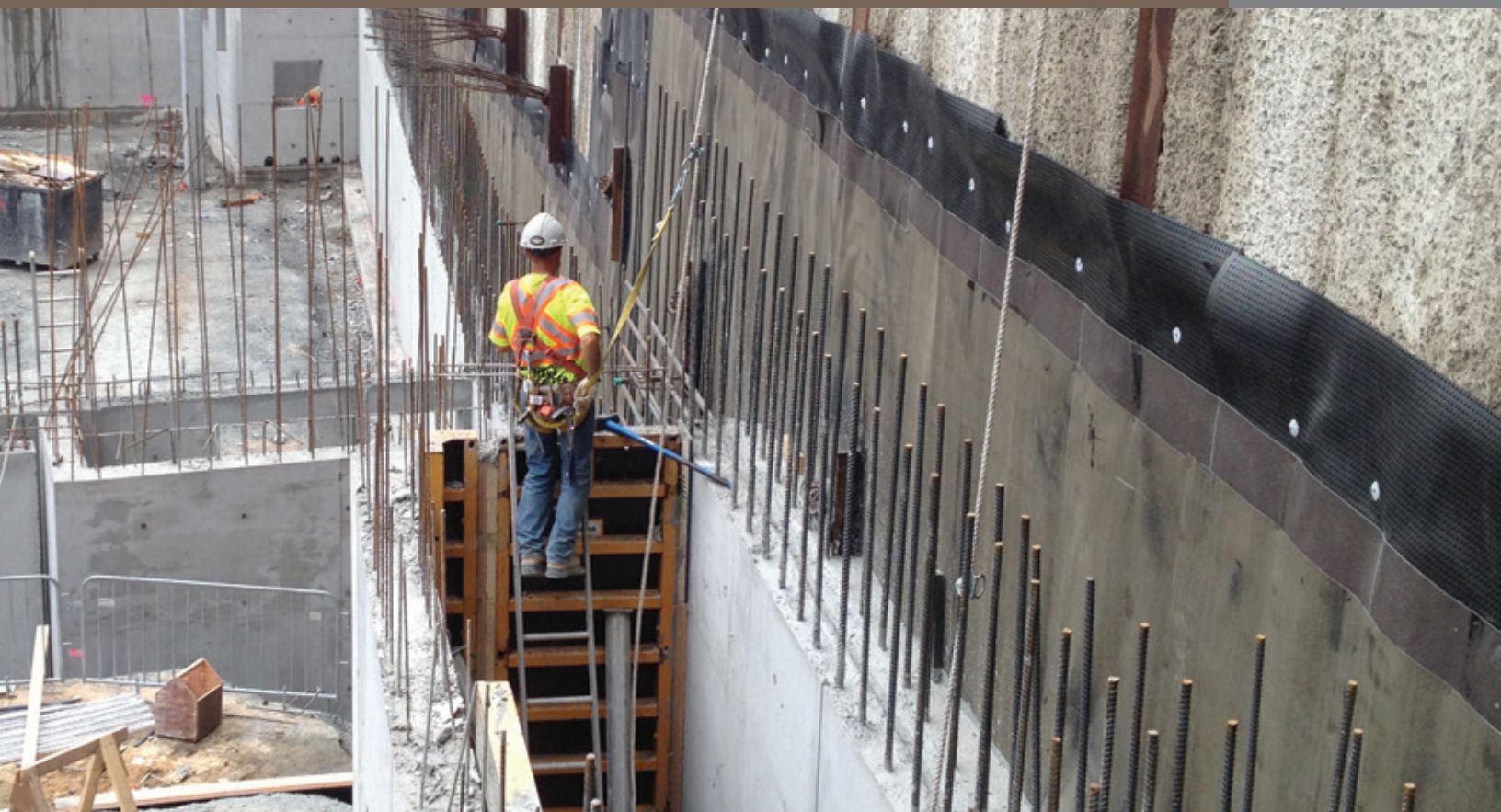




WATERPROOFING

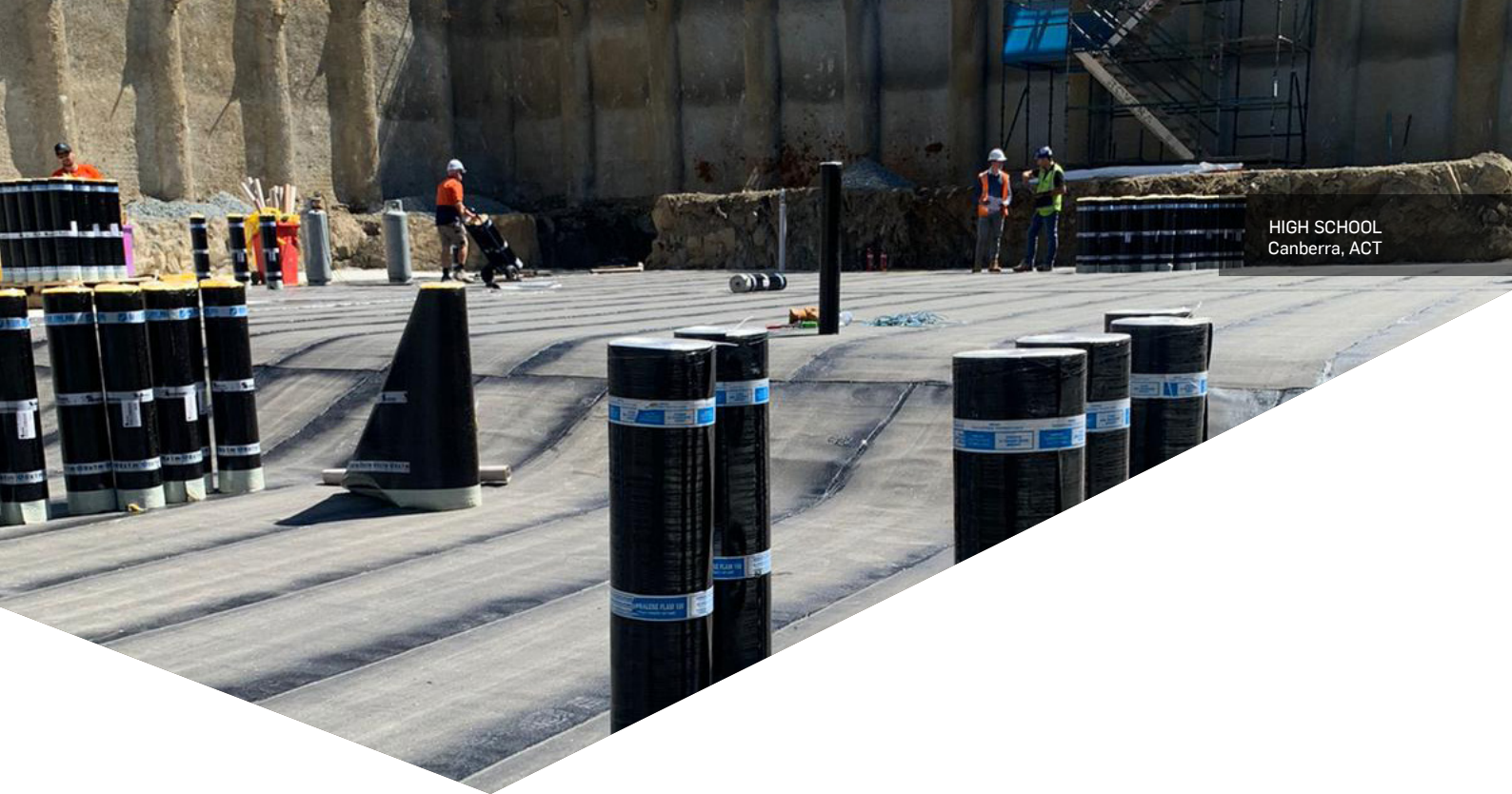
COLPHENE[®] BSW FOUNDATIONS

PRE-APPLIED MEMBRANE SYSTEM DESIGNED
FOR BLIND SIDE WATERPROOFING APPLICATIONS



4131EB Equus Soprema
COLPHENE Tanking Membrane





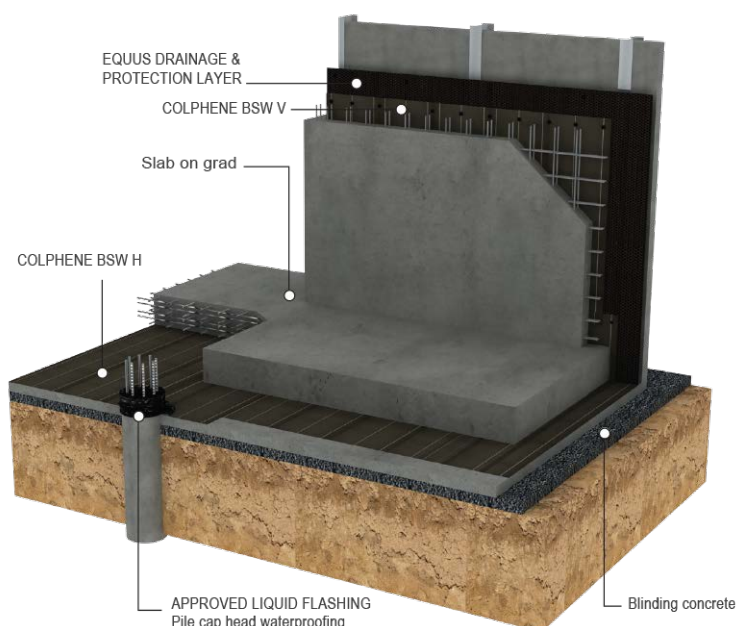
HIGH SCHOOL
Canberra, ACT

COLPHENE[®] BSW

PRE-APPLIED SYSTEM

COLPHENE BSW is a fully reinforced pre-applied membrane system designed for horizontal and vertical external blind side waterproofing applications. With its unique design, it can be used near buildings that limit access and excavation.

The membranes are composed of a select blend of high performance SBS-modified bitumen, an ultra-high-strength reinforcement, and a specially designed surface.



TESTING AND APPROVALS

SOPREMA's COLPHENE BSW membranes have been tested according to EN and ASTM Standards, and are BRANZ appraised, meeting the requirements of NZBC.



BENEFITS

- Excellent adhesion to poured concrete
- Increased resistance to hydrostatic pressure
- Superior resistance to tears and punctures
- Increased protection thanks to DUO SELVEDGE technology



QUALITY

COLPHENE BSW V

COLPHENE BSW V is designed for vertical blind side waterproofing applications. It is composed of high-performance SBS modified bitumen combined with an ultra-high-strength composite reinforcement. The surface is sanded and the self-adhesive underface is protected with a silicone release film. COLPHENE BSW V features DUO SELVEDGE technology.



COLPHENE BSW H

COLPHENE BSW H is designed for waterproofing applications under horizontal concrete slabs. It is composed of high-performance SBS modified bitumen and a polyester reinforcement. The surface is sanded and the underface is protected with a thermofusible plastic film. Its unique design, including DUO SELVEDGE technology, allows side laps to be heat-welded using a torch or a heat gun.



DIMENSIONS	
10 x 1 m (33 x 3.3 ft)	
THICKNESSES	
3.0 mm (120 mil)	3.5 mm (140 mil)
APPLICATION METHOD	
Self-adhesive with heat-welded laps	Loose-laid with heat-welded laps



SUPERIOR ADHESION

The system benefits from the effects of the exothermic reaction that occurs during concrete's curing process, and thus has superior adhesion due to a chemical and mechanical bond between the membrane and structural concrete. It features:

- CONTINUOUS BOND

Continuous and homogeneous bond to structural concrete

- ADHESIVE STRENGTH

Excellent adhesion to the poured structural concrete surface according to ASTM D903 standard

The top face of the membrane is made of SBS modified bitumen and covered with sand. The specially formulated surface softens slightly as the concrete begins to cure, releasing heat. This contributes to the adhesion of the membrane to the concrete, and prevents the ingress or migration of water around the structure.



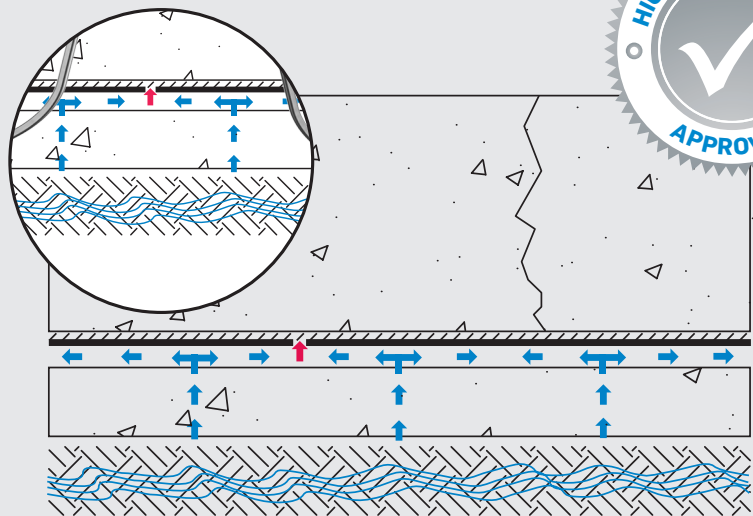
CONCEPTS



SOPREMA's SOLUTION:

COLPHENE BSW Concept
(pre-applied membrane system that is **fully bonded** to the structural concrete)

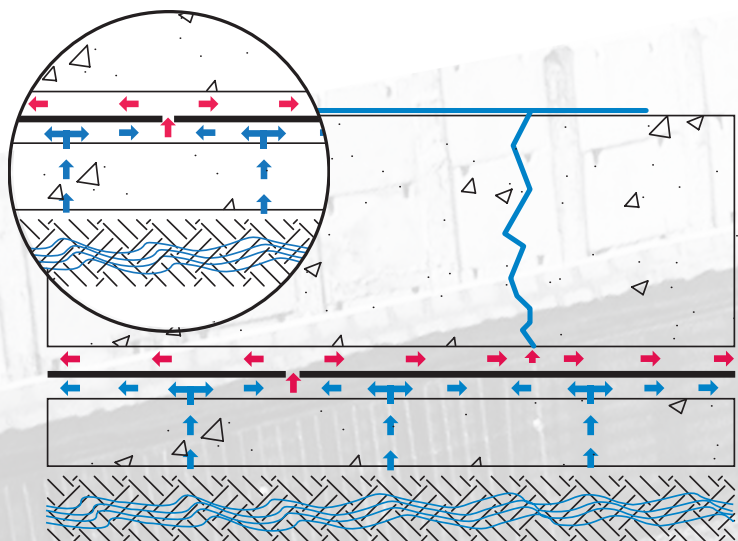
As it is natural for concrete to crack, it is important to protect it from water infiltration. The technology and concept of COLPHENE BSW ensure the full adhesion of a waterproofing system to the foundation.



OTHER OFFERINGS
ON THE MARKET:

Concept of a Conventional
Waterproofing System
(when **not bonded** to the structural concrete)

When there is water migration between the waterproofing membrane and structural concrete, the structure becomes vulnerable, and corrective actions are very costly.



ACCESSORIES



EQUUS PEEL & STICK PRIMER

Is a rubber based adhesive solvent solution.



SOPRADERE QUICK PRIMER

Cold applied fast drying primer based on bitumen, solvents and adhesion-improving additives.



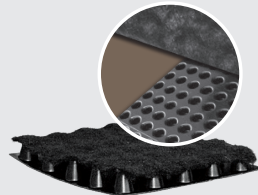
EASY FLASHING

A thixotropic waterproofing coating, formulated with bitumen in water emulsion, selected elastomeric resins and special additives, multipurpose with high adhesiveness.



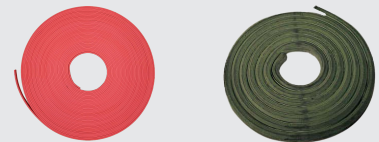
ALSAN FLASHING QUADRO

Single-component, root resistant polyurethane resin for waterproofing junctions between horizontal surfaces, up-stands and various roof details.



EQUUS APPROVED DRAINAGE LAYER

High-density drainage panel with a factory-laminated geo-textile. It is used on vertical surfaces before COLPHENE BSW installation.



AQUAFIN®-CJ6

Thermoplastic expansive waterstop for waterproofing construction joints. AQUAFIN®-CJ4

Bentonite joint waterstop with patented rain protection coating.



ALSAN MASTIC 2200

Flexible mastic based on bitumen and synthetic rubber. Used for sealing small tears, cracks, joints and local repairs.



SWELLSEAL

Equus Swellseal is a specially formulated, high performance, swellable, single-component, polyurethane based waterstop.



TERMINATION BAR

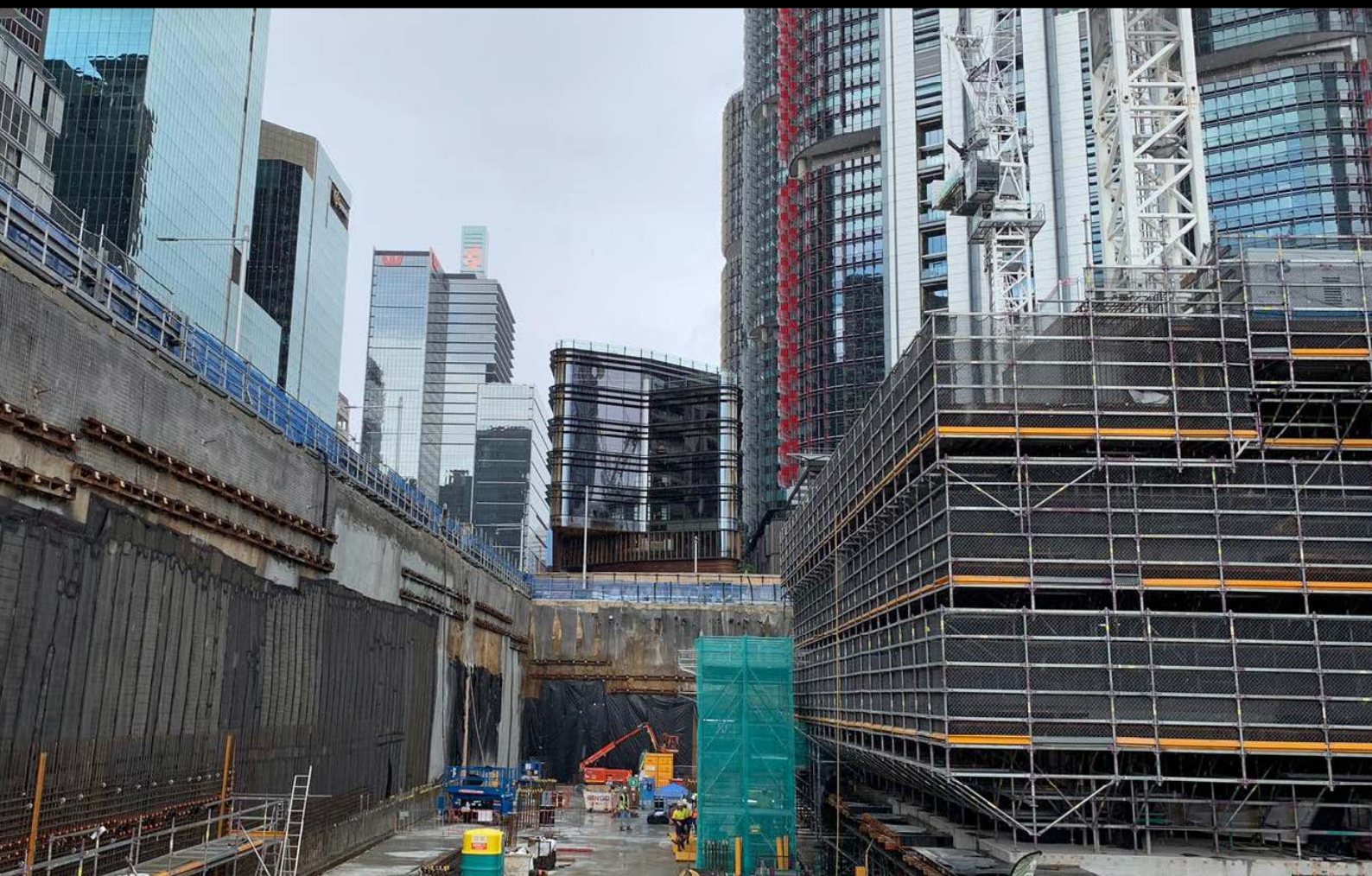
A pre-manufactured profile that terminates the waterproofing membrane at the wall in a professional and watertight, wind-peel resistant manner with the addition of 50 mm flange for securing drainage board.

WHO ARE WE?

Equus Industries provides technical waterproofing solutions for Architects, Engineers, Property Managers, and Contractors in the building industry. One system does not fit all.

Equus can provide complete solutions, systems, specifications, technical support and warranties.

Equus is the Authorised Distributor for SOPREMA in New Zealand. SOPREMA was founded in 1908 in France and has over 100 factories worldwide producing waterproofing materials and thermal insulation.



Equus Southern

Unit 6/100 Fitzgerald Ave,
Christchurch

PO Box 19 846
Christchurch

Ph: 03 353 2434

southern@equus.nz

Equus Central

45 Hutt Rd, Petone,
Wellington

PO Box 38 636
Wellington Mail Centre

Ph: 04 576 0333

central@equus.nz

Equus Northern

211 Archers Rd, Wairau Valley,
Glenfield, Auckland

PO Box 101 423
North Shore Mail Centre

Ph: 09 415 4314

northern@equus.nz