

Sky City Auckland Tower – Level 7

RFS32069

DATE: NOV 2025



PROJECT REFERENCE SHEET



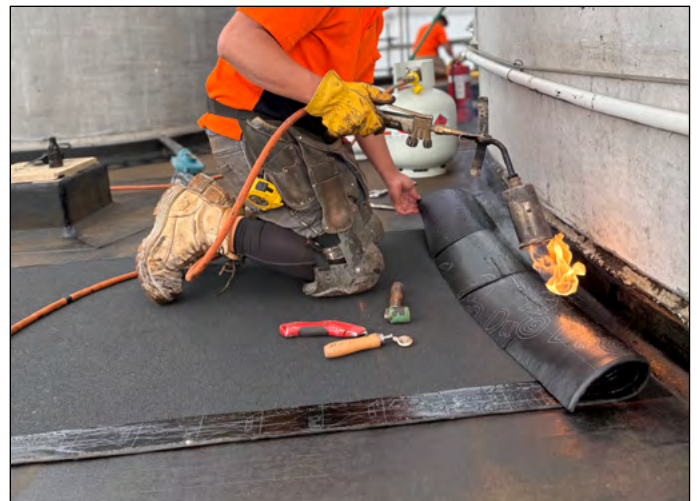
Detailing of base sheet to circular posts



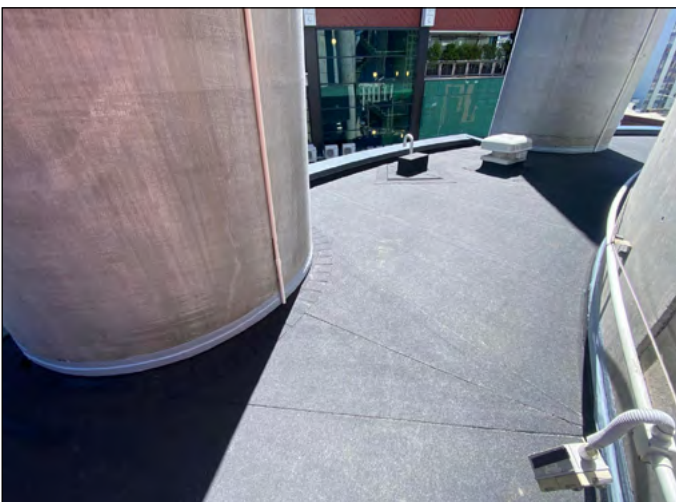
Application of DUO (Noir) capsheet to parapets and gutters



Base sheet being torched to primed substrate with ILD mesh



DUO cap sheet being torched on over base sheet



Finished project

Project Type: Roof Refurbishment

Location: Auckland

Product System: EQUUS SOPREMA DUO Two-Layer Membrane System

Project Size: 300m²

Certified Applicator: Hydroproof Ltd

Architect: Babbage

Main Contractor: Alaska

Completion Date: 2025