

Auckland International Airport WP1 East Terminal

RFS32067

DATE: AUG 2025



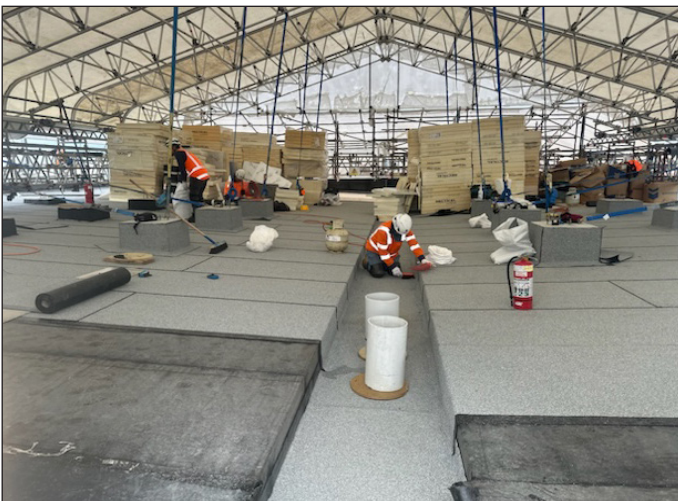
PROJECT REFERENCE SHEET



Self-adhesive COLPHENE vapour barrier over concrete substrate



Roof board mechanically fastened with primer applied on top



Base sheet with cap sheet being laid



Cap sheet application



Finished project

Project Type: New Build

Location: Auckland

Product System: EQUUS SOPREMA DUOTHERM
Warm Roof with Tapered nsulation

Certified Applicator: Sansom Ltd

Completion Date: 2024