

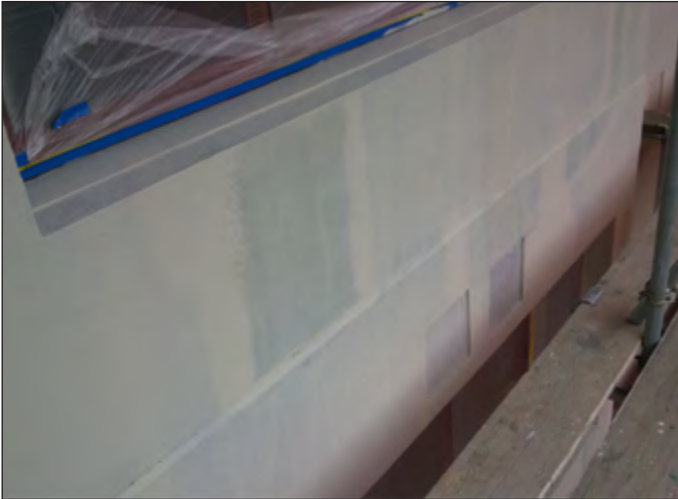
# Christchurch YMCA

RFS10002

DATE: JAN 2017



PROJECT REFERENCE SHEET



Detail Plaster and Bandaging applied to cracks



Surface primed with Coverall Sandy



Application of Troweltexx 2000



Colourglaze topcoat finished



Finished project

**Project Type:** Apartments

**Location:** Christchurch

**Product System:** Troweltexx 2000 Plaster System with Colourglaze finishing coat

**Project Size:** 2000m<sup>2</sup>

**Certified Applicator:** Advanced Exterior Plastering

**Completion Date:** 2016