

Shrink Sleeve



Description:

The **Shrink Sleeve** is a professional and innovative accessory to make flat roof penetrations watertight.

The **Shrink Sleeve** combines a sleeve, a flange and a base.

The base is made of high-quality, weather-resistant PVC. The **Shrink Sleeve** is made of UV-resistant Polyolefin. It shrinks when heated by hot air or flame and forms a closed, watertight sleeve around the round object that penetrates your flat roof. It has a special flange of elastomer SBS-modified bitumen for an optimal connection to all SOPREMA membrane systems. The flange diameter is 480mm.



Applications:

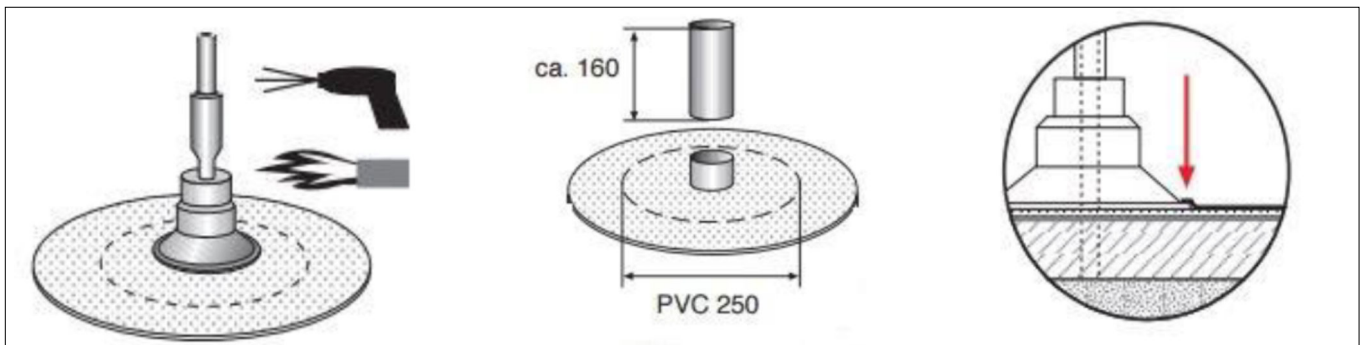
For watertight finish of round objects that penetrate the flat roof such as pipes and cables.

Instructions:

- Slide the **Shrink Sleeve** over the round object.
- Weld the flange in between waterproofing base and cap sheet.
- Bring the cap sheet up to the PVC base.
- Heat the sleeve with a torch or hot-air gun to make it shrink.

Penetration diameter info:

PVC diameter	Shrinks to:
22mm	12mm
55mm	42mm
88mm	66mm
110mm	88mm



Equus Industries Ltd
PO Box 601
Blenheim
Phone: 03 578 0214
Email: admin@equus.nz
Website: www.equus.nz
January 2024