

# DUO 'EASY FOAM'



## Description:

**Duo 'Easy Foam'** is a rapid curing, gun grade polyurethane adhesive, specially developed to bond various types of insulation materials on flat roofs.

With '**Easy Foam**' it is convenient to bond different types of insulation (PUR, PIR, Rockwool, XPS and EPS) to various types of surfaces:

- Bitumen vapour barrier
- Existing bituminous waterproofing membranes
- Concrete

## Surface Preparation:

The substrate shall be free from dust and grease. It shall be dry and solid. If required, moistening the substrate will speed up the curing time.

## Application:

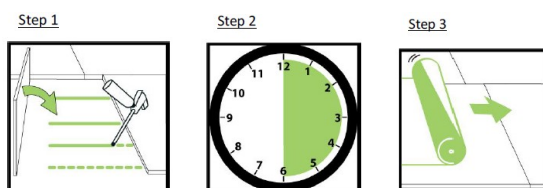
- Shake the tin thoroughly for at least 15 seconds.
- Screw the tin onto the 'Duo Easy Gun' and apply at least 3 vertical beads of foam onto the surface.
- Apply at least 4 beads of foam in corners and at roof edges (see installation guidelines). Can also be applied in serpentine pattern ( max 25cm between curbs).
- Press the insulation panels softly onto the beads.
- Ready to be treated after 30 minutes. Full strength after 3 hours.
- Application temperature for the tin: +10°C to +30°C.
- Always keep the tin upright for the most efficient application.

## Technical Data:

Characteristics	Values
Fire class	B1DIN 4102
Base	Polyurethane pre-polymer
Curing	Moisture curing
Type	Glue
Tack free	After +/- 10 minutes
Initial strength	After +/- 30 minutes
Full strength	After +/- 3 hours
Consumption	+/- 10 to 11m <sup>2</sup> of adhesive per tin
Thermal conductivity	40 m W/M.K
Compression resistance	30kPa (at 10% deformation)
Tensile strength	100 kPa
Elongation at break	15%
Shear	80kPa
Application temperature	Surrounding: 0°C to +35°C Tin: +10°C to +30°C
Temperature resistance	Prolonged: -40°C until +90°C Brief: -40°C until +130°C
Shelf life	9 months (store cool, dry and upright)

## Precautions:

- Always read the safety precautions mentioned on the tin before use.
- Use only in well-ventilated areas.
- No smoking. Protect eyes and wear suitable protective clothing and gloves.
- Protect surrounding surfaces from splashes.
- Superfluous foam can be removed with 'Duo Easy Cleaner'.
- Cured foam has to be removed mechanically.
- Safety precautions: See material safety data sheet.



Equus Industries Ltd  
PO Box 601  
Blenheim  
Phone: 03 578 0214  
Email: admin@equus.nz  
Website: www.equus.nz  
March 2022