



**EQUUS SOPREMA
FLAGON TPO-THERM
WARM ROOF SYSTEM**
Standard Details on Plywood Substrate



CELEBRATING
40 YEARS
1982-2022

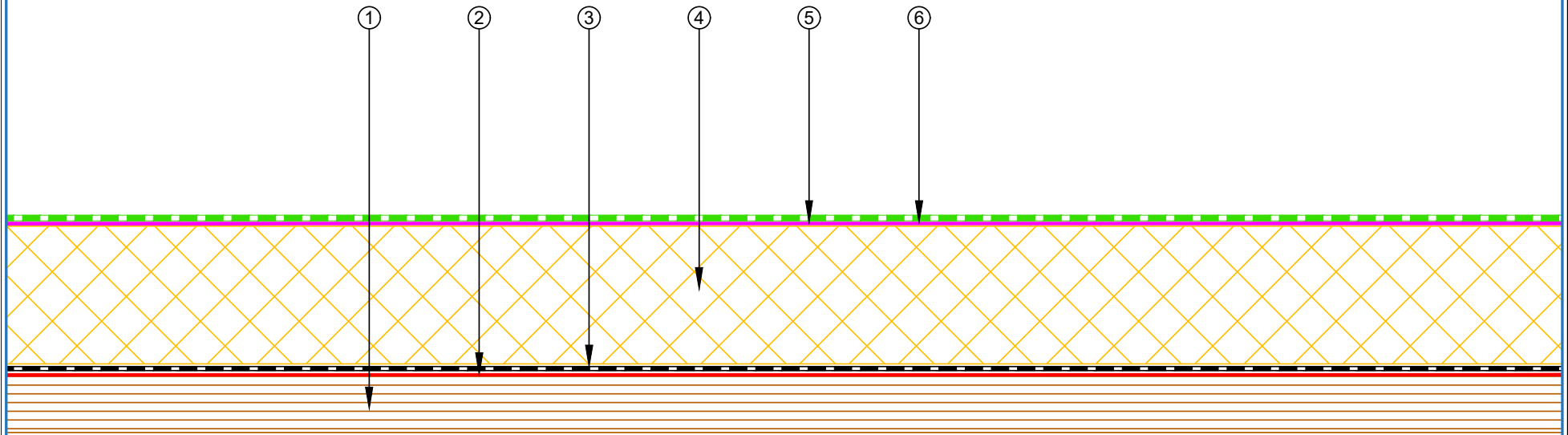




MAY 2023

CONTENTS

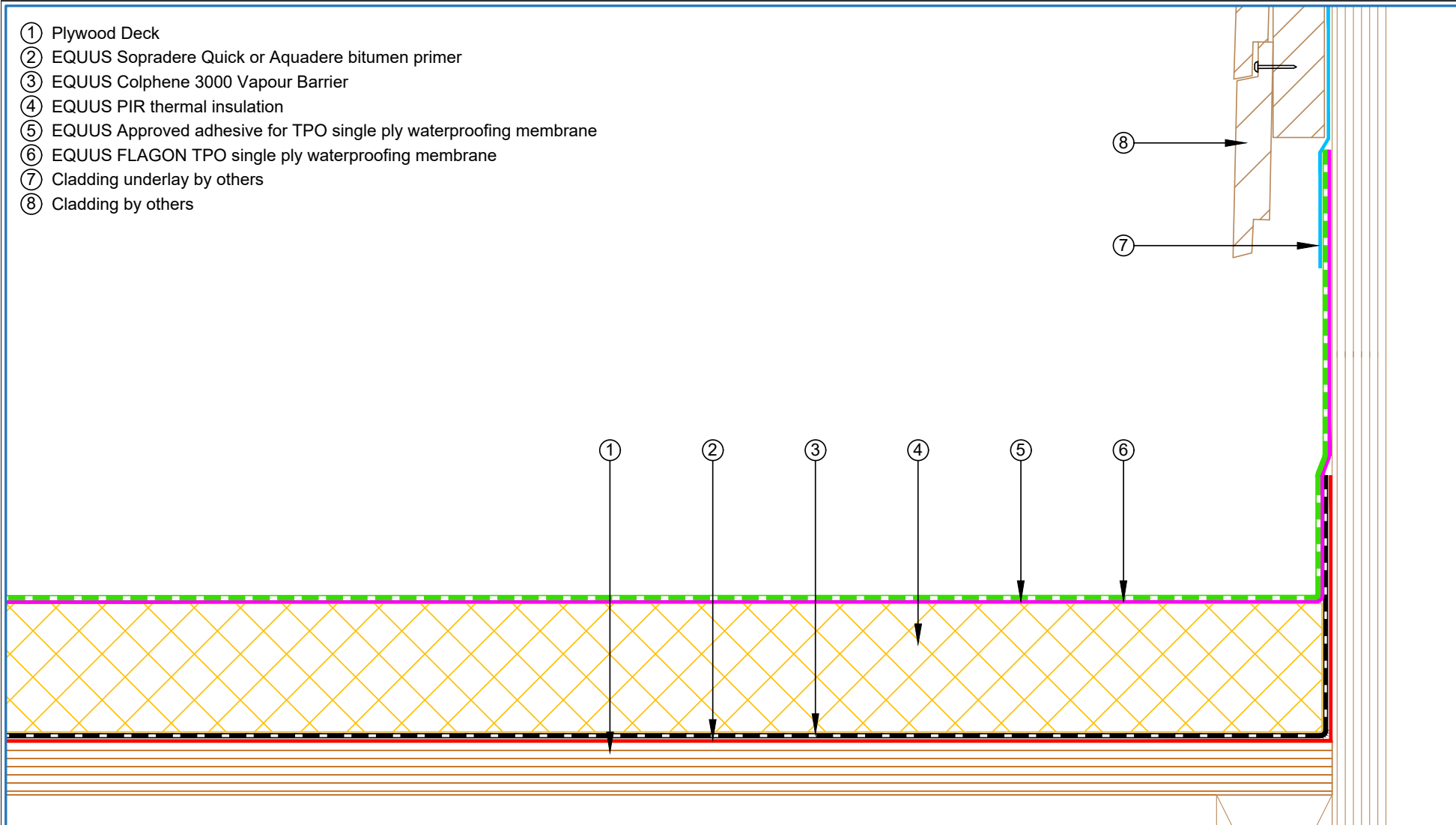
STWRP-D0a	Roof Built Up	1
STWRP-D1a	Upstand with Cladding	2
STWRP-D1b	Concrete upstand with Cladding	3
STWRP-D2a	Transition from Field to the Roof Option 1	4
STWRP-D2b	Transition from Field to the Roof Option 2	5
STWRP-D4a	Parapet with Cap Flashing	6
STWRP-D5a	Drip Edge to Spouting	7
STWRP-D7a	Roof Penetration	8
STWRP-D8a	Skylight Detail	9
STWRP-D9a	Gutter Outlet	10
STWRP-D10a	Scupper Termination	11

- ① Plywood Deck
- ② EQUUS Sopradere Quick or Aquadere bitumen primer
- ③ EQUUS Colphene 3000 Vapour Barrier
- ④ EQUUS PIR thermal insulation
- ⑤ EQUUS Approved adhesive for TPO single ply waterproofing membrane
- ⑥ EQUUS FLAGON TPO single ply waterproofing membrane



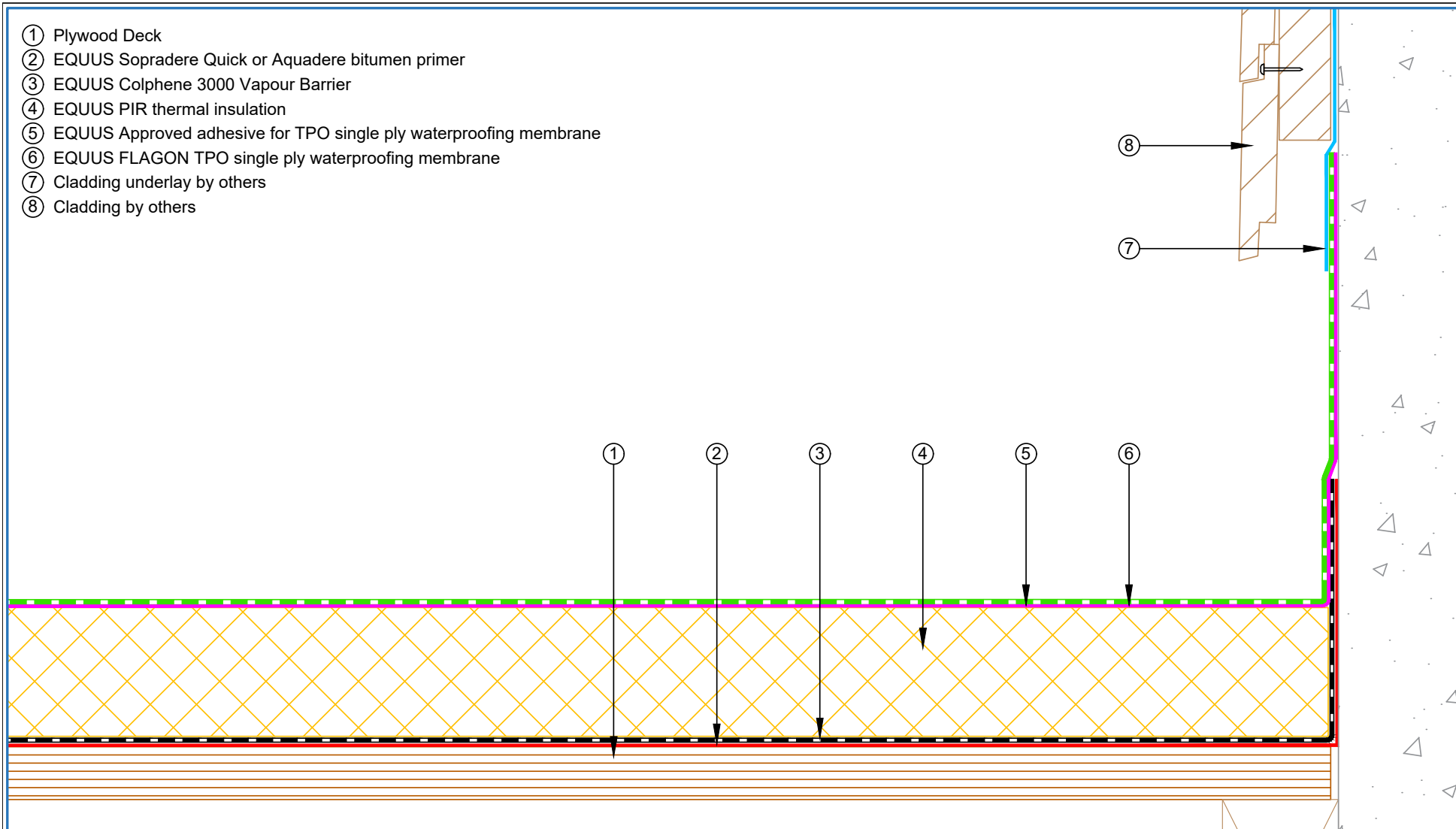
 E-mail : admin@equus.co.nz Web : www.equus.co.nz	PROJECT :	Single ply warm roof system on plywood Standard Detail - TPO		
	TITLE :	Roof Built Up Detail		
	NUMBER :	STWRP-D0a	SCALE :	1:2
	DRAWN BY :	NKT	DATE :	30-Jan-2023
			REVISED :	
<p><small>Equus Waterproof Membrane Details are specially drawn for use by Local Authorities, Building Contractors, Equus Applicators, Architects and design professionals. All details are drawn to assist in the development of project specific details. Details may be modified where necessary to accommodate job specific requirements but must be approved by Equus Industries Ltd. All components must be supplied by Equus Industries Ltd. Equus reserves the right to alter or upgrade details at any time without prior notice.</small></p>				
				


- ① Plywood Deck
- ② EQUUS Sopradere Quick or Aquadere bitumen primer
- ③ EQUUS Colphene 3000 Vapour Barrier
- ④ EQUUS PIR thermal insulation
- ⑤ EQUUS Approved adhesive for TPO single ply waterproofing membrane
- ⑥ EQUUS FLAGON TPO single ply waterproofing membrane
- ⑦ Cladding underlay by others
- ⑧ Cladding by others

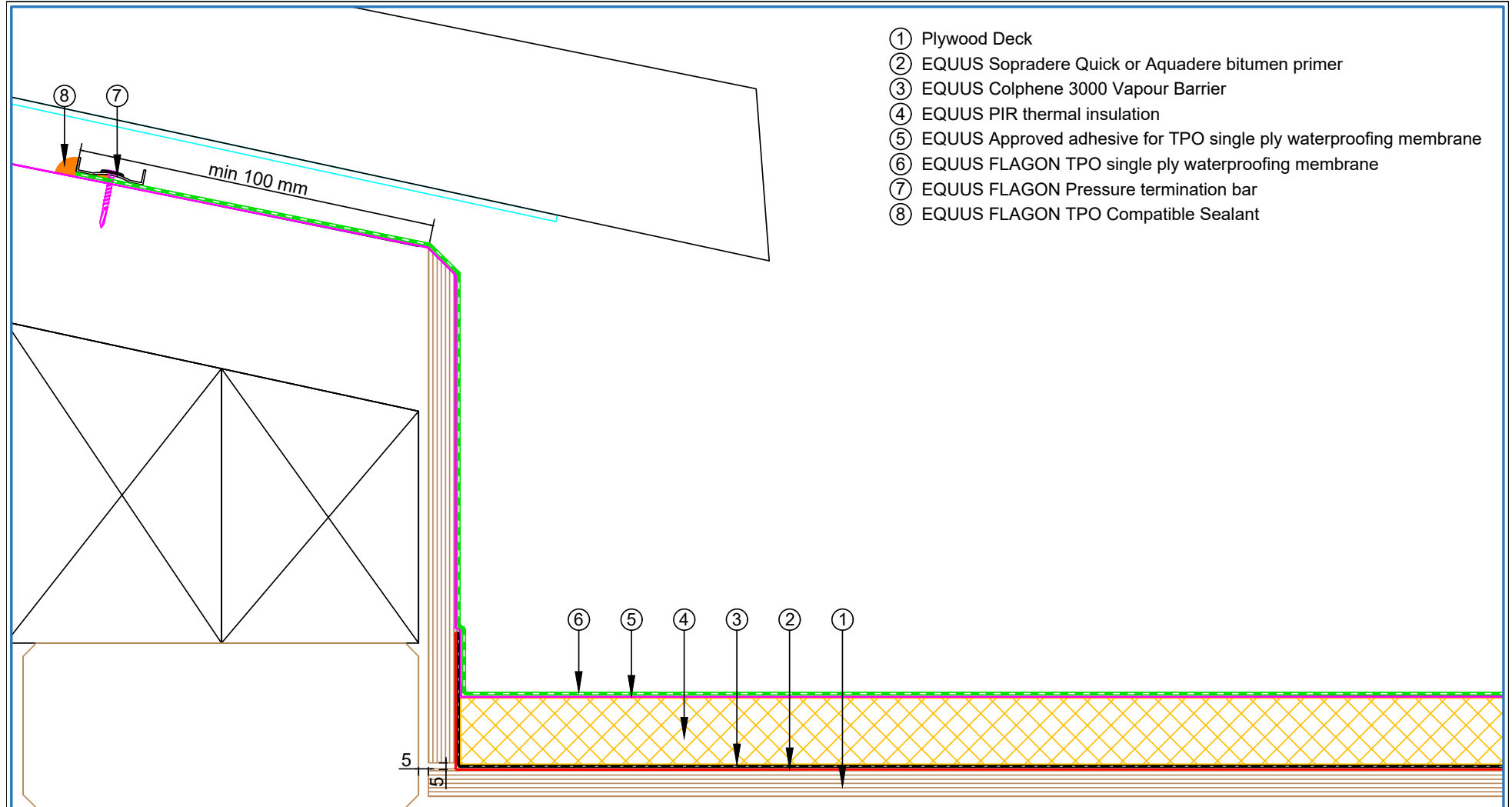


<p>E-mail : admin@equus.co.nz Web : www.equus.co.nz</p>	PROJECT :	Single ply warm roof system on plywood Standard Detail - TPO		
	TITLE :	Plywood upstand with Cladding detail		
	NUMBER :	STWRP-D1a	SCALE :	1:2
	DRAWN BY :	NKT	DATE :	30-Jan-2023
			REVISED :	
<p>Equus Waterproof Membrane Details are specially drawn for use by Local Authorities, Building Contractors, Equus Applicators, Architects and design professionals. All details are drawn to assist in the development of project specific details. Details may be modified where necessary to accommodate job specific requirements but must be approved by Equus Industries Ltd. All components must be supplied by Equus Industries Ltd. Equus reserves the right to alter or upgrade details at any time without prior notice.</p>				
		<p>AUTHORISED DISTRIBUTOR SOPREMA</p>		

- ① Plywood Deck
- ② EQUUS Sopradere Quick or Aquadere bitumen primer
- ③ EQUUS Colphene 3000 Vapour Barrier
- ④ EQUUS PIR thermal insulation
- ⑤ EQUUS Approved adhesive for TPO single ply waterproofing membrane
- ⑥ EQUUS FLAGON TPO single ply waterproofing membrane
- ⑦ Cladding underlay by others
- ⑧ Cladding by others



 E-mail : admin@equus.co.nz Web : www.equus.co.nz	PROJECT :		Single ply warm roof system on plywood Standard Detail - TPO			
	TITLE :		Concrete upstand with Cladding detail			
	NUMBER :	STWRP-D1b	SCALE :	1:2		
	DRAWN BY :	NKT	DATE :	30-Jan-2023	REVISED :	
	Equus Waterproof Membrane Details are specially drawn for use by Local Authorities, Building Contractors, Equus Applicators, Architects and design professionals. All details are drawn to assist in the development of project specific details. Details may be modified where necessary to accommodate job specific requirements but must be approved by Equus Industries Ltd. All components must be supplied by Equus Industries Ltd. Equus reserves the right to alter or upgrade details at any time without prior notice.					

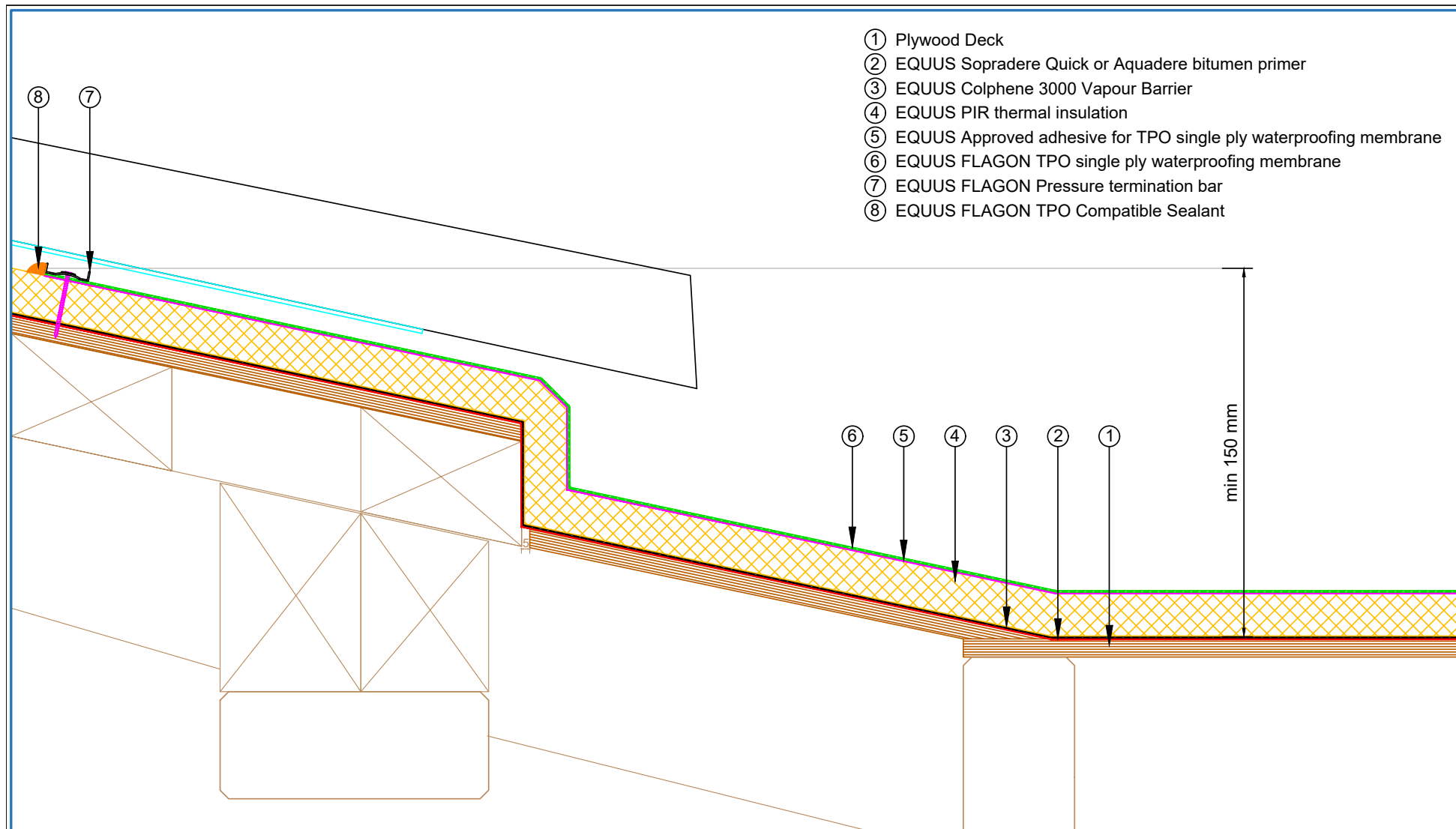


- ① Plywood Deck
- ② EQUUS Sopradere Quick or Aquadere bitumen primer
- ③ EQUUS Colphene 3000 Vapour Barrier
- ④ EQUUS PIR thermal insulation
- ⑤ EQUUS Approved adhesive for TPO single ply waterproofing membrane
- ⑥ EQUUS FLAGON TPO single ply waterproofing membrane
- ⑦ EQUUS FLAGON Pressure termination bar
- ⑧ EQUUS FLAGON TPO Compatible Sealant

E-mail : admin@equus.co.nz
Web : www.equus.co.nz

PROJECT :	Single ply warm roof system on plywood Standard Detail - TPO		
TITLE :	Transition from field to the roof detail - option 1		
NUMBER :	STWRP-D2a	SCALE :	NTS
DRAWN BY :	NKT	DATE :	30-Jan-2023
		REVISED :	
<p><small>Equus Waterproof Membrane Details are specially drawn for use by Local Authorities, Building Contractors, Equus Applicators, Architects and design professionals. All details are drawn to assist in the development of project specific details. Details may be modified where necessary to accommodate job specific requirements but must be approved by Equus Industries Ltd. All components must be supplied by Equus Industries Ltd. Equus reserves the right to alter or upgrade details at any time without prior notice.</small></p>			

AUTHORISED DISTRIBUTOR
SOPREMA



- ① Plywood Deck
- ② EQUUS Sopradere Quick or Aquadere bitumen primer
- ③ EQUUS Colphene 3000 Vapour Barrier
- ④ EQUUS PIR thermal insulation
- ⑤ EQUUS Approved adhesive for TPO single ply waterproofing membrane
- ⑥ EQUUS FLAGON TPO single ply waterproofing membrane
- ⑦ EQUUS FLAGON Pressure termination bar
- ⑧ EQUUS FLAGON TPO Compatible Sealant

min 150 mm

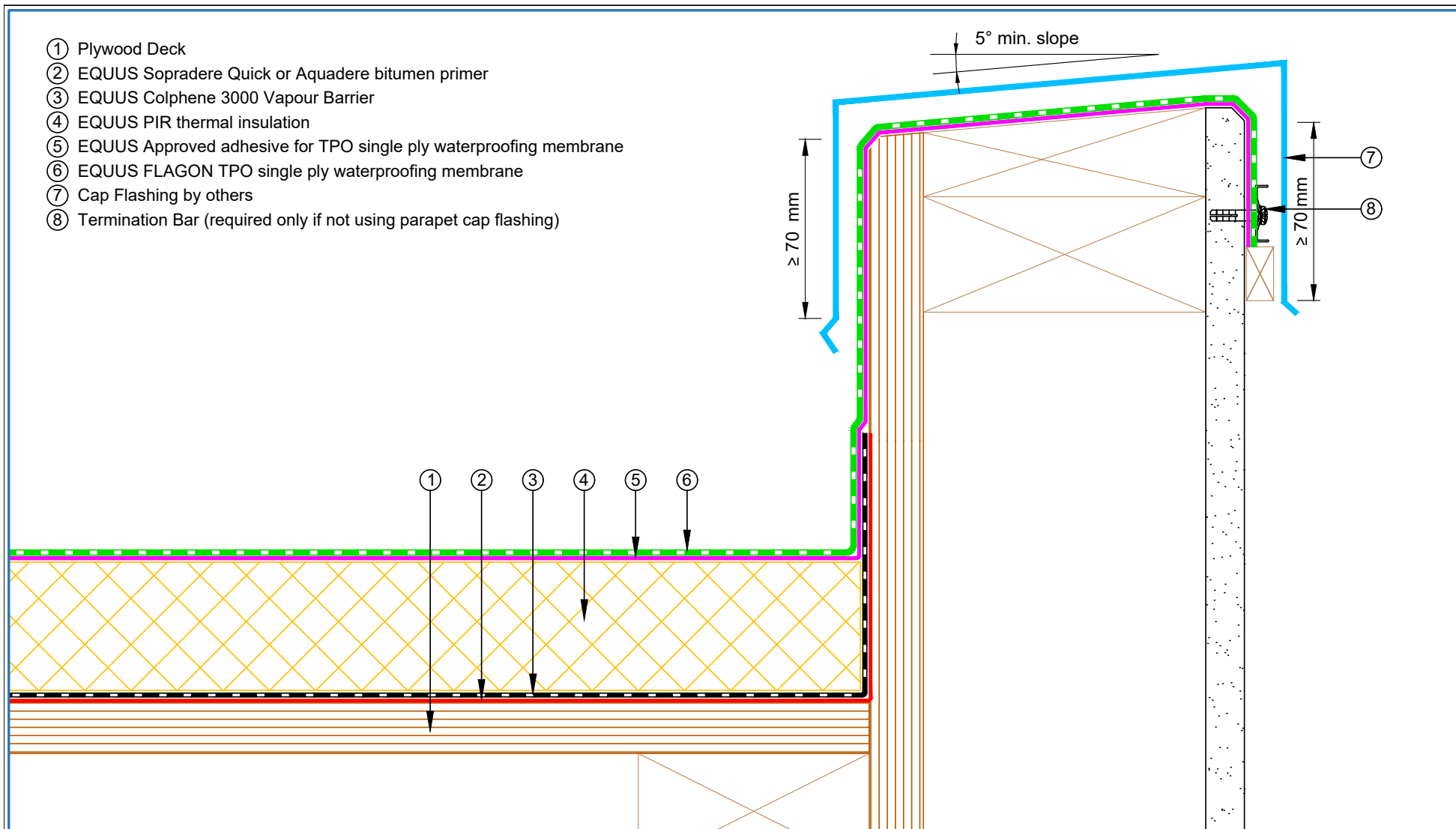


E-mail : admin@equus.co.nz
Web : www.equus.co.nz

PROJECT :	Single ply warm roof system on plywood Standard Detail - TPO		
TITLE :	Transition from field to the roof detail - option 2		
NUMBER :	STWRP-D2b	SCALE :	NTS
DRAWN BY :	NKT	DATE :	30-Jan-2023
		REVISED :	
<p>Equus Waterproof Membrane Details are specially drawn for use by Local Authorities, Building Contractors, Equus Applicators, Architects and design professionals. All details are drawn to assist in the development of project specific details. Details may be modified where necessary to accommodate job specific requirements but must be approved by Equus Industries Ltd. All components must be supplied by Equus Industries Ltd. Equus reserves the right to alter or upgrade details at any time without prior notice.</p>			



- ① Plywood Deck
- ② EQUUS Sopradere Quick or Aquadere bitumen primer
- ③ EQUUS Colphene 3000 Vapour Barrier
- ④ EQUUS PIR thermal insulation
- ⑤ EQUUS Approved adhesive for TPO single ply waterproofing membrane
- ⑥ EQUUS FLAGON TPO single ply waterproofing membrane
- ⑦ Cap Flashing by others
- ⑧ Termination Bar (required only if not using parapet cap flashing)



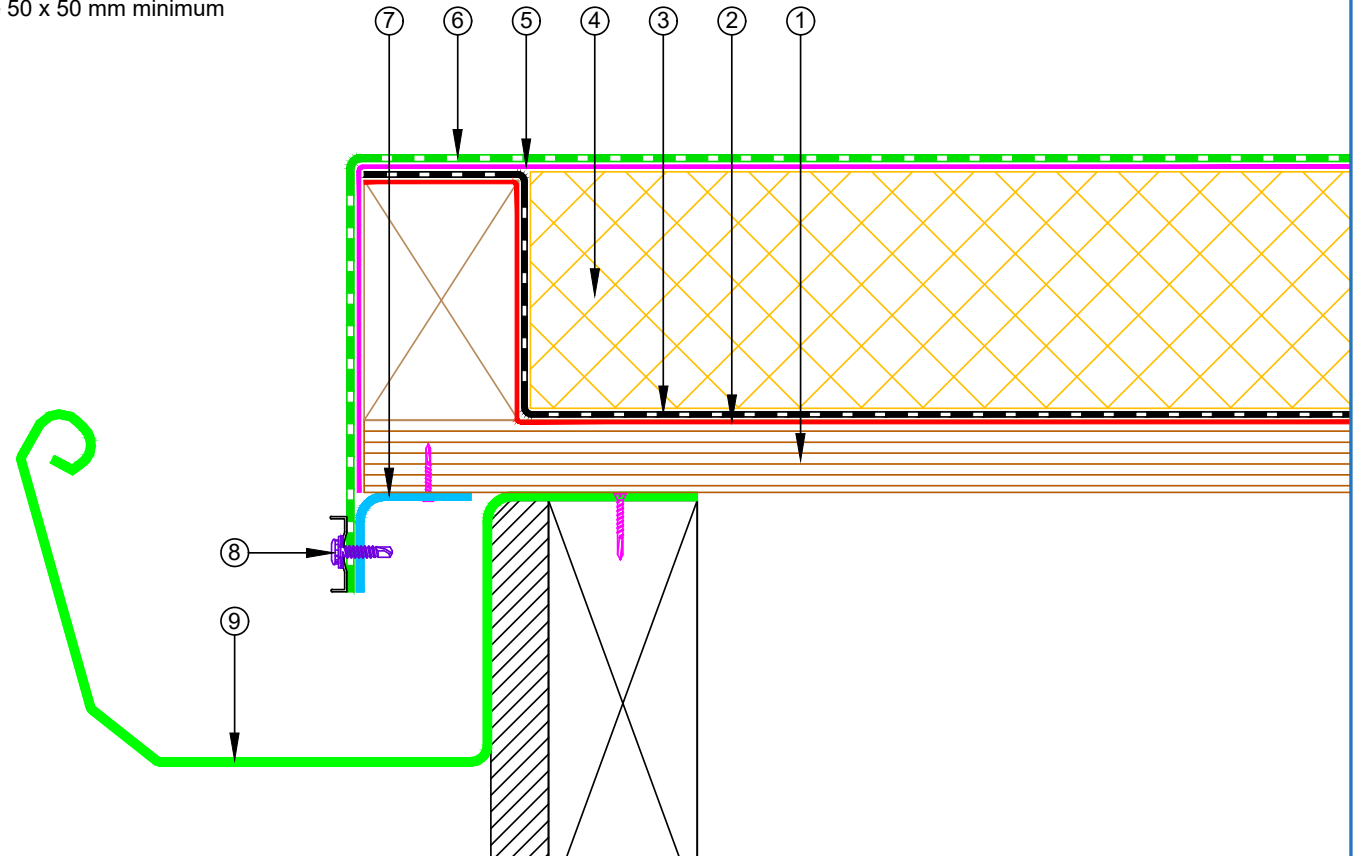
E-mail : admin@equus.co.nz
Web : www.equus.co.nz

PROJECT :	Single ply warm roof system on plywood Standard Detail - TPO		
TITLE :	Parapet with cap flashing		
NUMBER :	STWRP-D4a	SCALE :	1:2
DRAWN BY :	NKT	DATE :	02-Feb-2023
REVISED :			

Equus Waterproof Membrane Details are specially drawn for use by Local Authorities, Building Contractors, Equus Applicators, Architects and design professionals. All details are drawn to assist in the development of project specific details. Details may be modified where necessary to accommodate job specific requirements but must be approved by Equus Industries Ltd. All components must be supplied by Equus Industries Ltd. Equus reserves the right to alter or upgrade details at any time without prior notice.



- ① Plywood Deck
- ② EQUUS Sopradere Quick or Aquadere bitumen primer
- ③ EQUUS Colphene 3000 Vapour Barrier
- ④ EQUUS PIR thermal insulation
- ⑤ EQUUS Approved adhesive for TPO single ply waterproofing membrane
- ⑥ EQUUS FLAGON TPO single ply waterproofing membrane
- ⑦ Aluminium minimum 2mm. or stainless steel angle 50 x 50 mm minimum
- ⑧ Pressure Seal bar fixed to metal drip-edge
- ⑨ Rain water system by others



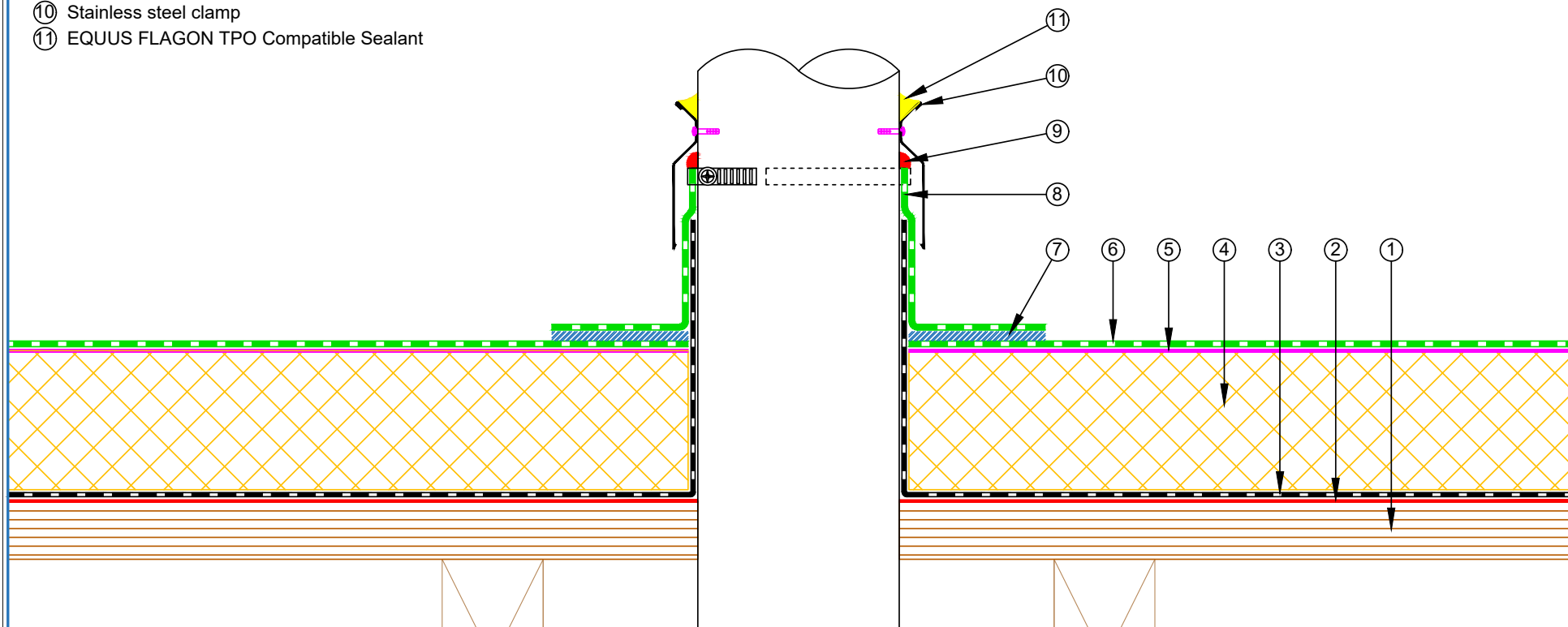
E-mail : admin@equus.co.nz
Web : www.equus.co.nz

PROJECT :	Single ply warm roof system on plywood Standard Detail - TPO		
TITLE :	Drip edge to spouting		
NUMBER :	STWRP-D5a	SCALE :	NTS
DRAWN BY :	NKT	DATE :	02-Feb-2023
REVISED :			

Equus Waterproof Membrane Details are specially drawn for use by Local Authorities, Building Contractors, Equus Applicators, Architects and design professionals. All details are drawn to assist in the development of project specific details. Details may be modified where necessary to accommodate job specific requirements but must be approved by Equus Industries Ltd. All components must be supplied by Equus Industries Ltd. Equus reserves the right to alter or upgrade details at any time without prior notice.



- ① Plywood Deck
- ② EQUUS Sopradere Quick or Aquadere bitumen primer
- ③ EQUUS Colphene 3000 Vapour Barrier
- ④ EQUUS PIR thermal insulation
- ⑤ EQUUS Approved adhesive for TPO single ply waterproofing membrane
- ⑥ EQUUS FLAGON TPO single ply waterproofing membrane
- ⑦ 40 mm welded lap
- ⑧ EQUUS FLAGON TPO as separate piece
- ⑨ EQUUS FLAGON Mastic
- ⑩ Stainless steel clamp
- ⑪ EQUUS FLAGON TPO Compatible Sealant



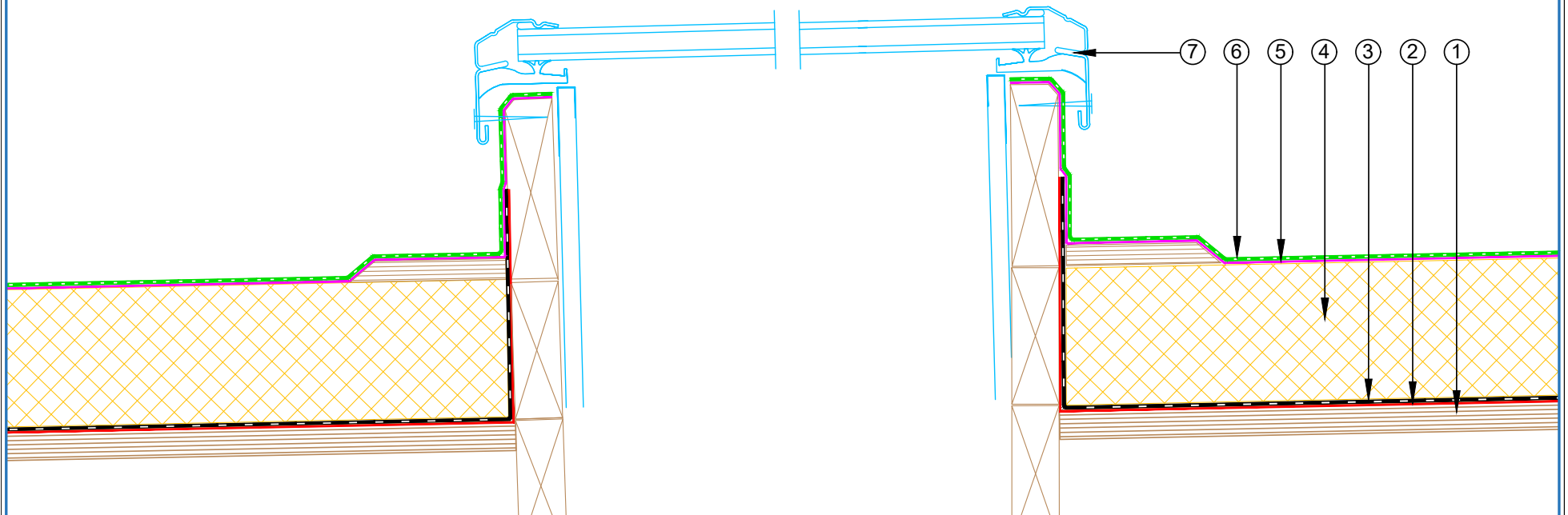
E-mail : admin@equus.co.nz
Web : www.equus.co.nz

PROJECT :	Single ply warm roof system on plywood Standard Detail - TPO		
TITLE :	Roof Penetration		
NUMBER :	STWRP-D7a	SCALE :	NTS
DRAWN BY :	NKT	DATE :	02-Feb-2023
REVISED :			

Equus Waterproof Membrane Details are specially drawn for use by Local Authorities, Building Contractors, Equus Applicators, Architects and design professionals. All details are drawn to assist in the development of project specific details. Details may be modified where necessary to accommodate job specific requirements but must be approved by Equus Industries Ltd. All components must be supplied by Equus Industries Ltd. Equus reserves the right to alter or upgrade details at any time without prior notice.



- ① Plywood Deck
- ② EQUUS Sopradere Quick or Aquadere bitumen primer
- ③ EQUUS Colphene 3000 Vapour Barrier
- ④ EQUUS PIR thermal insulation
- ⑤ EQUUS Approved adhesive for TPO single ply waterproofing membrane
- ⑥ EQUUS FLAGON TPO single ply waterproofing membrane
- ⑦ Skylight Joinery

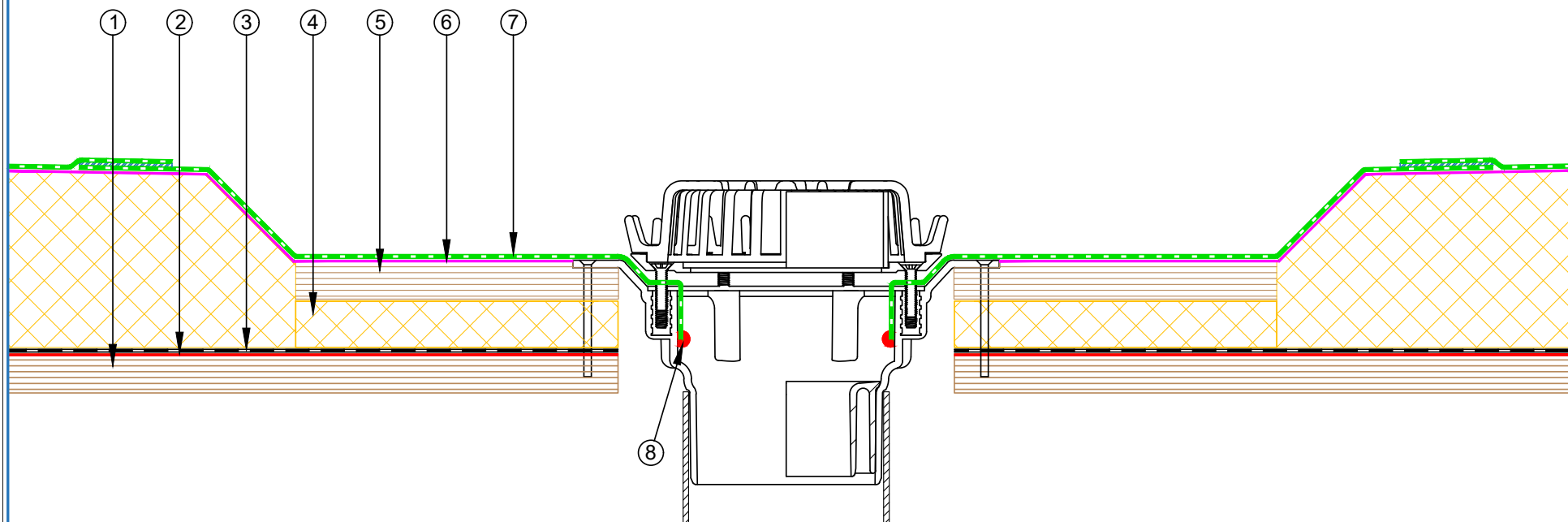


E-mail : admin@equus.co.nz
Web : www.equus.co.nz

PROJECT :	Single ply warm roof system on plywood Standard Detail - TPO		
TITLE :	Skylight Detail		
NUMBER :	STWRP-D8a	SCALE :	1 : 4
DRAWN BY :	NKT	DATE :	02-Feb-2023
REVISED :			
<p><small>Equus Waterproof Membrane Details are specially drawn for use by Local Authorities, Building Contractors, Equus Applicators, Architects and design professionals. All details are drawn to assist in the development of project specific details. Details may be modified where necessary to accommodate job specific requirements but must be approved by Equus Industries Ltd. All components must be supplied by Equus Industries Ltd. Equus reserves the right to alter or upgrade details at any time without prior notice.</small></p>			



- ① Plywood Deck
- ② EQUUS Sopradere Quick or Aquadere bitumen primer
- ③ EQUUS Colphene 3000 Vapour Barrier
- ④ EQUUS PIR thermal insulation
- ⑤ Plywood
- ⑥ EQUUS Approved adhesive for TPO single ply waterproofing membrane
- ⑦ EQUUS FLAGON TPO single ply waterproofing membrane
- ⑧ EQUUS FLAGON Mastic

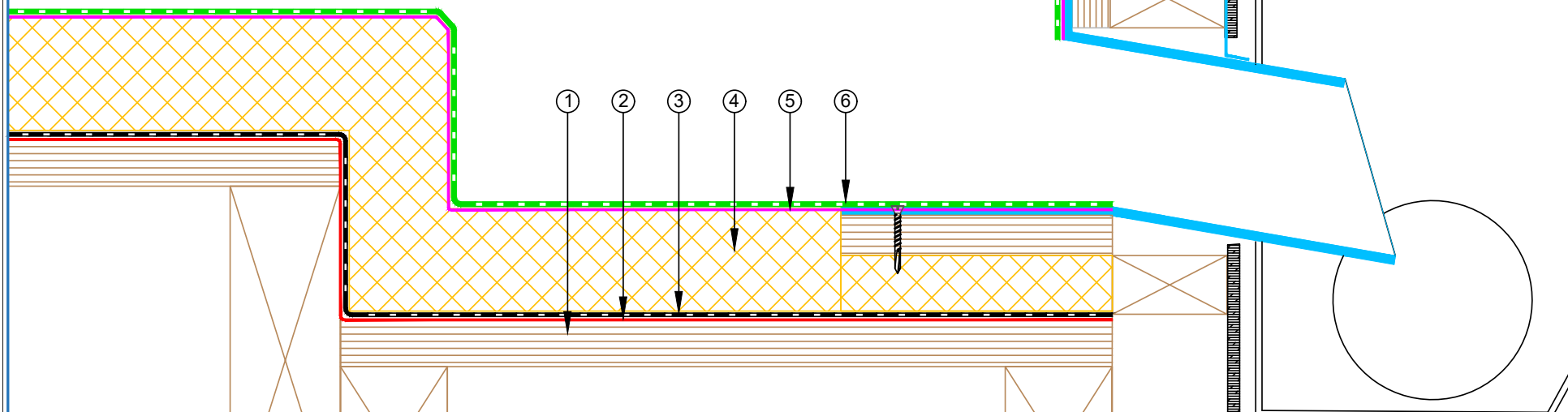
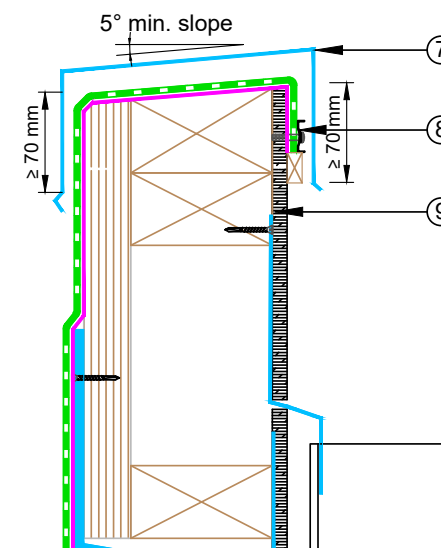


E-mail : admin@equus.co.nz
Web : www.equus.co.nz

PROJECT :	Single ply warm roof system on plywood Standard Detail - TPO		
TITLE :	Gutter Outlet Detail		
NUMBER :	STWRP-D9a	SCALE :	1 : 3
DRAWN BY :	NKT	DATE :	02-Feb-2023
		REVISED :	
<p><small>Equus Waterproof Membrane Details are specially drawn for use by Local Authorities, Building Contractors, Equus Applicators, Architects and design professionals. All details are drawn to assist in the development of project specific details. Details may be modified where necessary to accommodate job specific requirements but must be approved by Equus Industries Ltd. All components must be supplied by Equus Industries Ltd. Equus reserves the right to alter or upgrade details at any time without prior notice.</small></p>			



- ① Plywood Deck
- ② EQUUS Sopradere Quick or Aquadere bitumen primer
- ③ EQUUS Colphene 3000 Vapour Barrier
- ④ EQUUS PIR thermal insulation
- ⑤ EQUUS Approved adhesive for TPO single ply waterproofing membrane
- ⑥ EQUUS FLAGON TPO single ply waterproofing membrane
- ⑦ Cap Flashing by others
- ⑧ Termination Bar (required only if not using parapet cap flashing)
- ⑨ Cladding by others



PROJECT :	Single ply warm roof system on plywood Standard Detail - TPO		
TITLE :	Scupper termination Detail		
NUMBER :	STWRP-D10a	SCALE :	NTS
DRAWN BY :	NKT	DATE :	02-Feb-2023
REVISED :			
<p><small>Equus Waterproof Membrane Details are specially drawn for use by Local Authorities, Building Contractors, Equus Applicators, Architects and design professionals. All details are drawn to assist in the development of project specific details. Details may be modified where necessary to accommodate job specific requirements but must be approved by Equus Industries Ltd. All components must be supplied by Equus Industries Ltd. Equus reserves the right to alter or upgrade details at any time without prior notice.</small></p>			