



# EQUUS SOPREMA FLAGON TPO MEMBRANE SYSTEM

Standard Details on Concrete Substrate



CELEBRATING  
**40** YEARS  
1982-2022

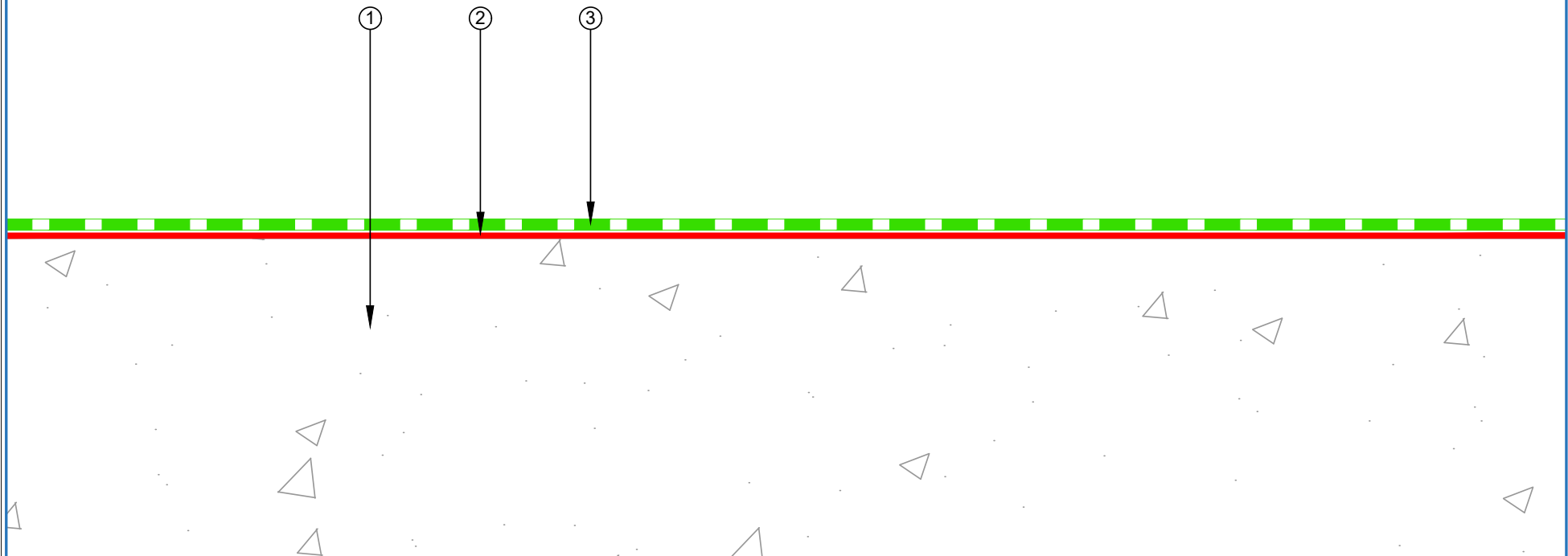




MAY 2023

## CONTENTS

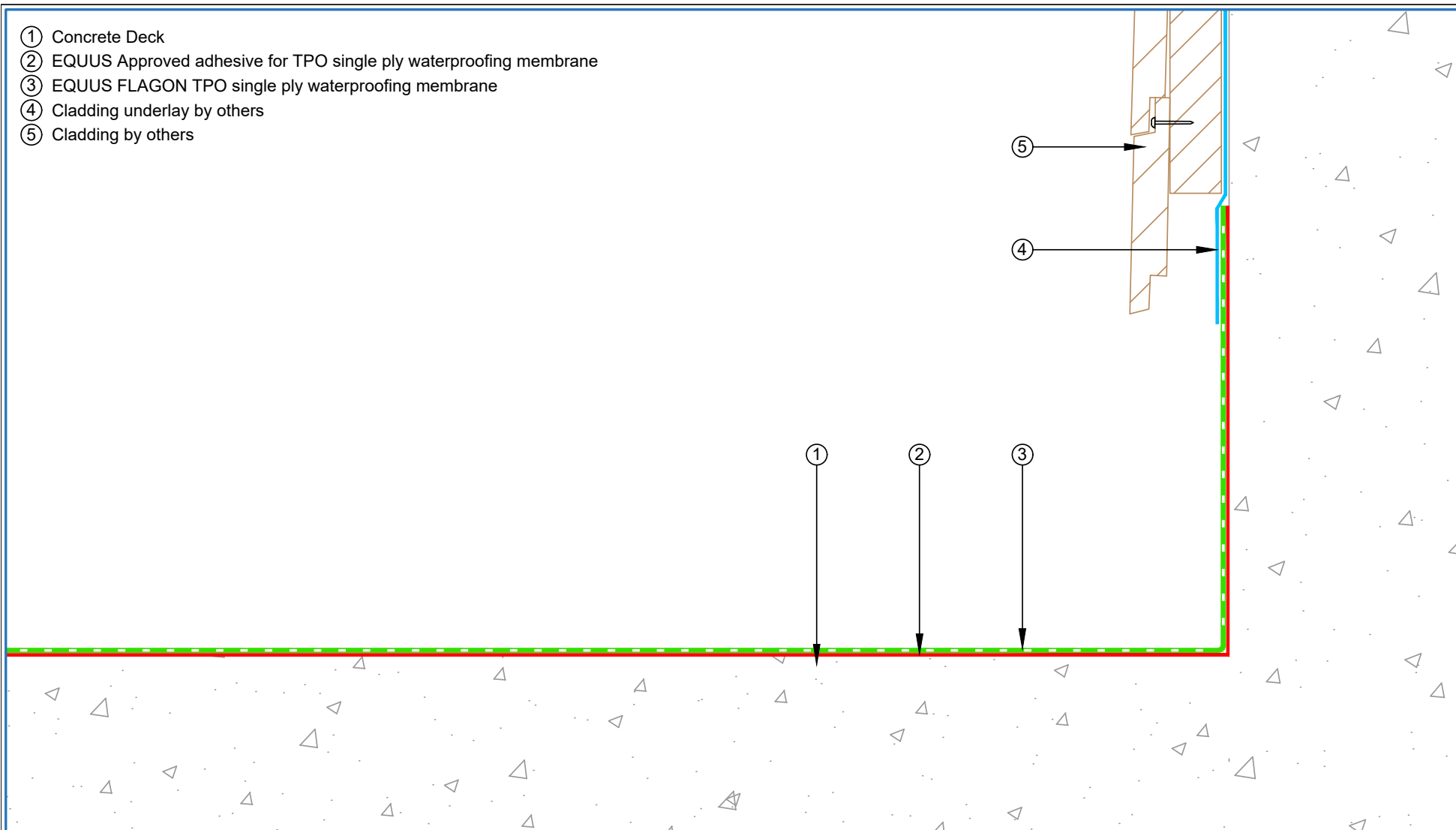
STCRC-D0a	Roof Built Up	1
STCRC-D1a	Upstand with Cladding	2
STCRC-D1b	Upstand at Window Frame	3
STCRC-D3a	Upstand with Termination onto a Chase	4
STCRC-D3b	Upstand Termination with Flashing and Pressure Bar	5
STCRC-D3c	Upstand with Pressure Termination Bar	6
STCRC-D4a	Parapet with Cap Flashing	7
STCRC-D5a	Drip Edge to Spouting	8
STCRC-D6a	Roof Edge Termination Option 1 and Option 2	9
STCRC-D6b	Roof Edge Termination Option 3 and Option 4	10
STCRC-D6c	Roof Edge Termination Option 5	11
STCRC-D7a	Roof Penetration	12
STCRC-D8a	Skylight Detail	13
STCRC-D9a	Gutter Outlet	14
STCRC-D10a	Scupper Termination	15



- ① Concrete Deck
- ② EQUUS Approved adhesive for TPO single ply waterproofing membrane
- ③ EQUUS FLAGON TPO single ply waterproofing membrane

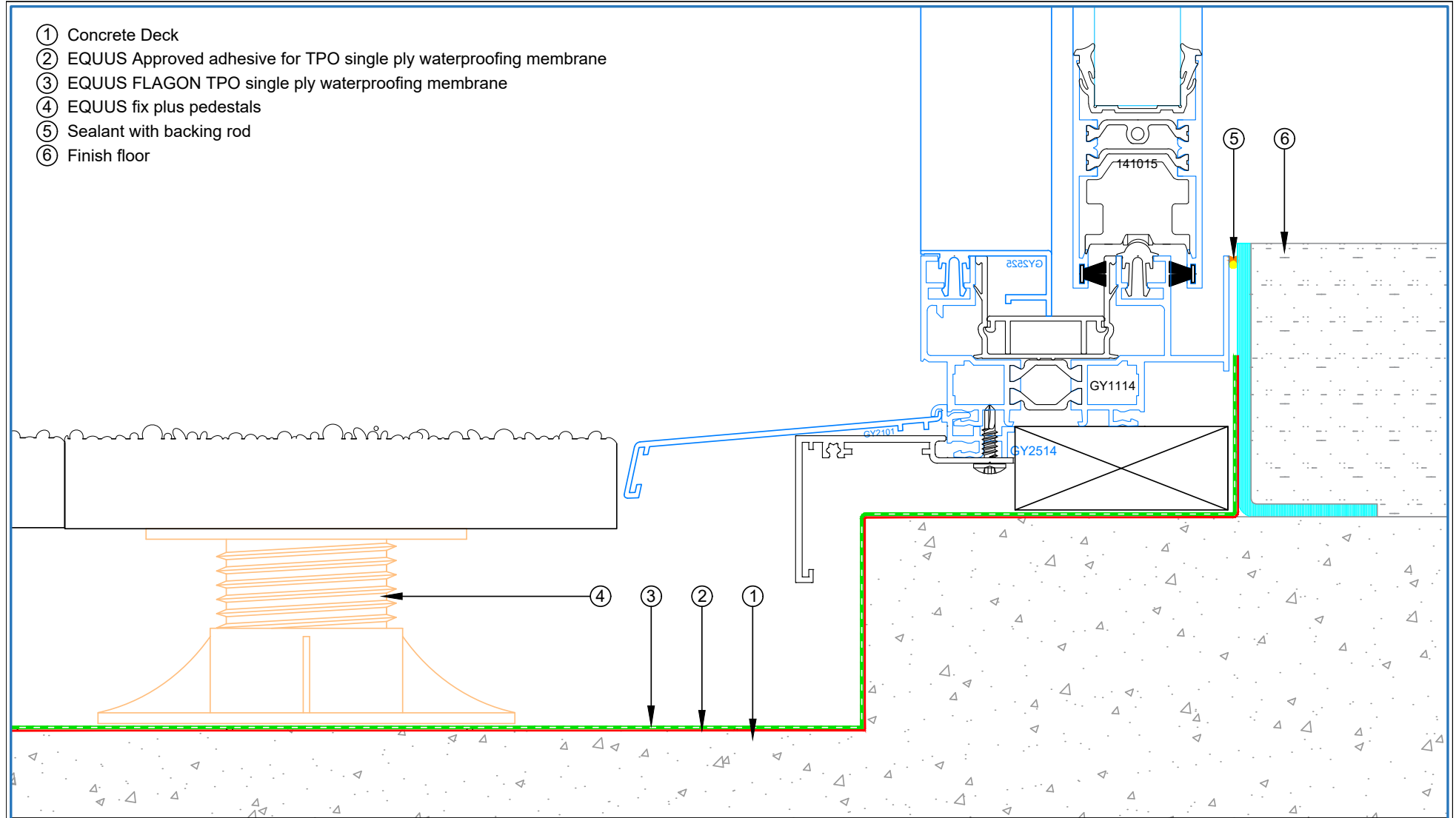


 E-mail : <a href="mailto:admin@equus.co.nz">admin@equus.co.nz</a> Web : <a href="http://www.equus.co.nz">www.equus.co.nz</a>	PROJECT :	Single ply cold roof system on concrete standard Detail - TPO			 AUTHORISED DISTRIBUTOR <b>SOPREMA</b>		
	TITLE :	Roof Built Up Detail					
	NUMBER :	STCRC-D0a	SCALE :	1:2			
	DRAWN BY :	NKT	DATE :	23-Feb-2023		REVISED :	
	<small>Equus Waterproof Membrane Details are specially drawn for use by Local Authorities, Building Contractors, Equus Applicators, Architects and design professionals. All details are drawn to assist in the development of project specific details. Details may be modified where necessary to accommodate job specific requirements but must be approved by Equus Industries Ltd. All components must be supplied by Equus Industries Ltd. Equus reserves the right to alter or upgrade details at any time without prior notice.</small>						

- ① Concrete Deck
- ② EQUUS Approved adhesive for TPO single ply waterproofing membrane
- ③ EQUUS FLAGON TPO single ply waterproofing membrane
- ④ Cladding underlay by others
- ⑤ Cladding by others

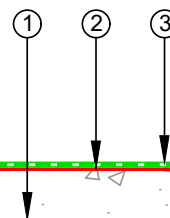
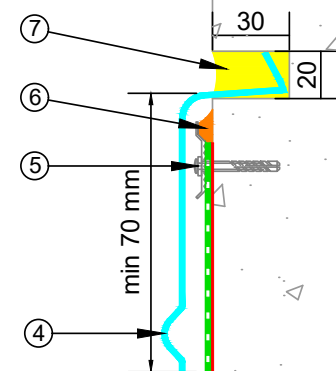


 E-mail : <a href="mailto:admin@equus.co.nz">admin@equus.co.nz</a> Web : <a href="http://www.equus.co.nz">www.equus.co.nz</a>	PROJECT :	Single ply cold roof system on concrete Standard Detail - TPO		
	TITLE :	Concrete upstand with Cladding detail		
	NUMBER :	STCRC-D1a	SCALE :	1:2
	DRAWN BY :	NKT	DATE :	23-Feb-2023
			REVISED :	
Equus Waterproof Membrane Details are specially drawn for use by Local Authorities, Building Contractors, Equus Applicators, Architects and design professionals. All details are drawn to assist in the development of project specific details. Details may be modified where necessary to accommodate job specific requirements but must be approved by Equus Industries Ltd. All components must be supplied by Equus Industries Ltd. Equus reserves the right to alter or upgrade details at any time without prior notice.				
		 AUTHORISED DISTRIBUTOR <b>SOPREMA</b>		



<p>E-mail : <a href="mailto:admin@equus.co.nz">admin@equus.co.nz</a> Web : <a href="http://www.equus.co.nz">www.equus.co.nz</a></p>	PROJECT :	Single ply cold roof system on concrete Standard Detail - TPO		
	TITLE :	Upstand at window frame detail		
	NUMBER :	STCRC-D1b	SCALE :	NTS
	DRAWN BY :	NKT	DATE :	23-Feb-2023
			REVISED :	
<p>Equus Waterproof Membrane Details are specially drawn for use by Local Authorities, Building Contractors, Equus Applicators, Architects and design professionals. All details are drawn to assist in the development of project specific details. Details may be modified where necessary to accommodate job specific requirements but must be approved by Equus Industries Ltd. All components must be supplied by Equus Industries Ltd. Equus reserves the right to alter or upgrade details at any time without prior notice.</p>				
		<p>AUTHORISED DISTRIBUTOR <b>SOPREMA</b></p>		

- ① Concrete Deck
- ② EQUUS Approved adhesive for TPO single ply waterproofing membrane
- ③ EQUUS FLAGON TPO single ply waterproofing membrane
- ④ Metal Flashing by others
- ⑤ EQUUS FLAGON Pressure termination bar
- ⑥ EQUUS FLAGON TPO Compatible Sealant
- ⑦ Compatible Epoxy



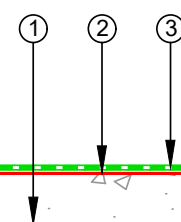
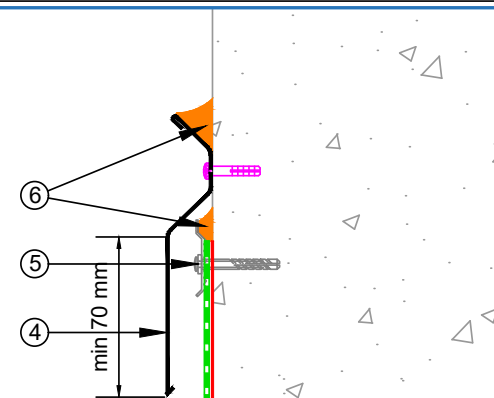
E-mail : [admin@equus.co.nz](mailto:admin@equus.co.nz)  
Web : [www.equus.co.nz](http://www.equus.co.nz)

PROJECT :	Single ply cold roof system on Concrete Standard Detail - TPO			
TITLE :	Upstand with termination onto a chase			
NUMBER :	STCRC-D3a	SCALE :	NTS	
DRAWN BY :	NKT	DATE :	23-Feb-2023	REVISED :

Equus Waterproof Membrane Details are specially drawn for use by Local Authorities, Building Contractors, Equus Applicators, Architects and design professionals. All details are drawn to assist in the development of project specific details. Details may be modified where necessary to accommodate job specific requirements but must be approved by Equus Industries Ltd. All components must be supplied by Equus Industries Ltd. Equus reserves the right to alter or upgrade details at any time without prior notice.



- ① Concrete Deck
- ② EQUUS Approved adhesive for TPO single ply waterproofing membrane
- ③ EQUUS FLAGON TPO single ply waterproofing membrane
- ④ Metal Flashing by others
- ⑤ EQUUS FLAGON Pressure termination bar
- ⑥ EQUUS FLAGON TPO Compatible Sealant

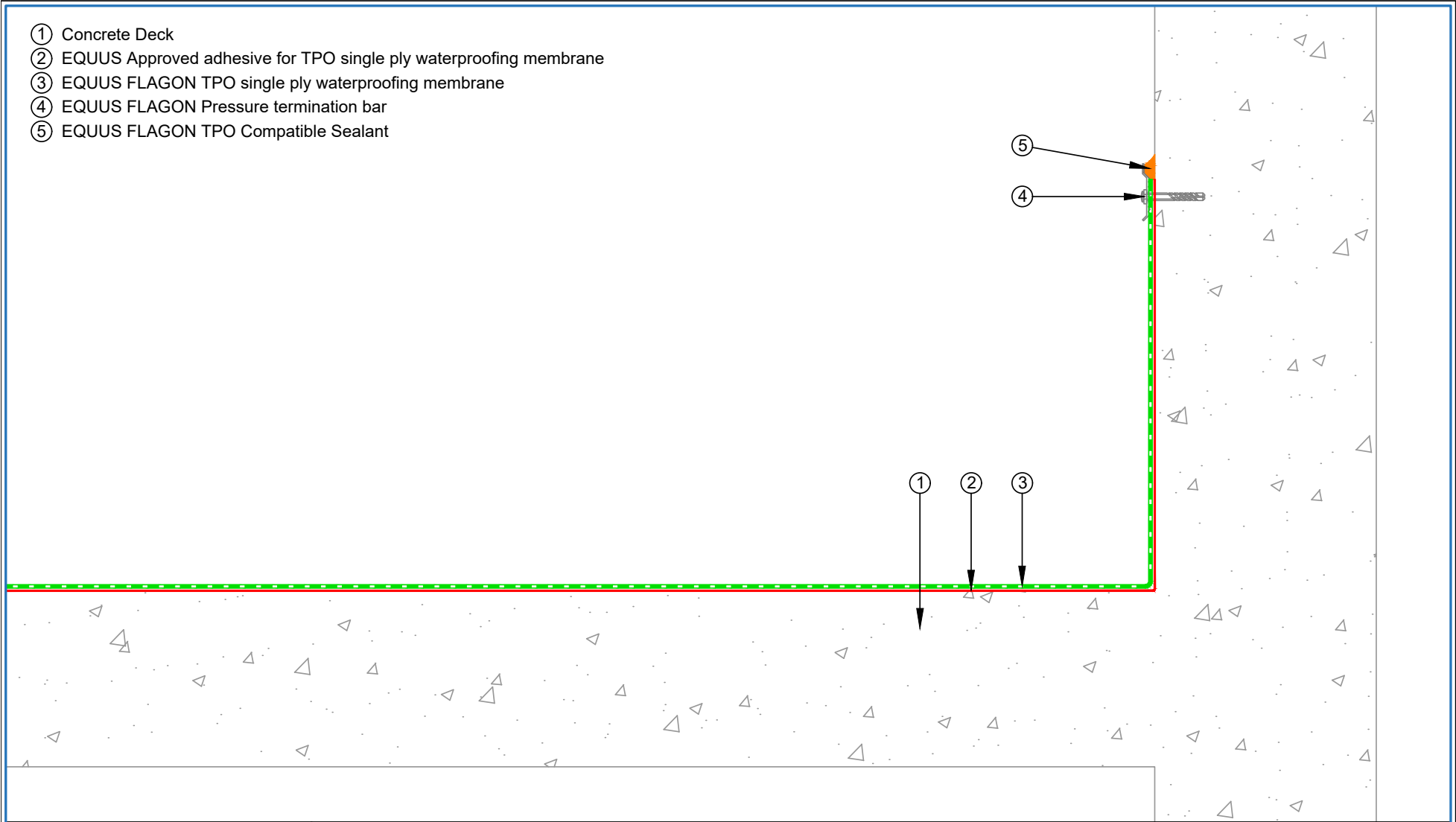


E-mail : [admin@equus.co.nz](mailto:admin@equus.co.nz)  
Web : [www.equus.co.nz](http://www.equus.co.nz)

PROJECT :	Single ply cold roof system on concrete Standard Detail - TPO		
TITLE :	Upstand termination with flashing and pressure bar		
NUMBER :	STCRC-D3b	SCALE :	NTS
DRAWN BY :	NKT	DATE :	23-Feb-2023
REVISED :			
<p><small>Equus Waterproof Membrane Details are specially drawn for use by Local Authorities, Building Contractors, Equus Applicators, Architects and design professionals. All details are drawn to assist in the development of project specific details. Details may be modified where necessary to accommodate job specific requirements but must be approved by Equus Industries Ltd. All components must be supplied by Equus Industries Ltd. Equus reserves the right to alter or upgrade details at any time without prior notice.</small></p>			



- ① Concrete Deck
- ② EQUUS Approved adhesive for TPO single ply waterproofing membrane
- ③ EQUUS FLAGON TPO single ply waterproofing membrane
- ④ EQUUS FLAGON Pressure termination bar
- ⑤ EQUUS FLAGON TPO Compatible Sealant

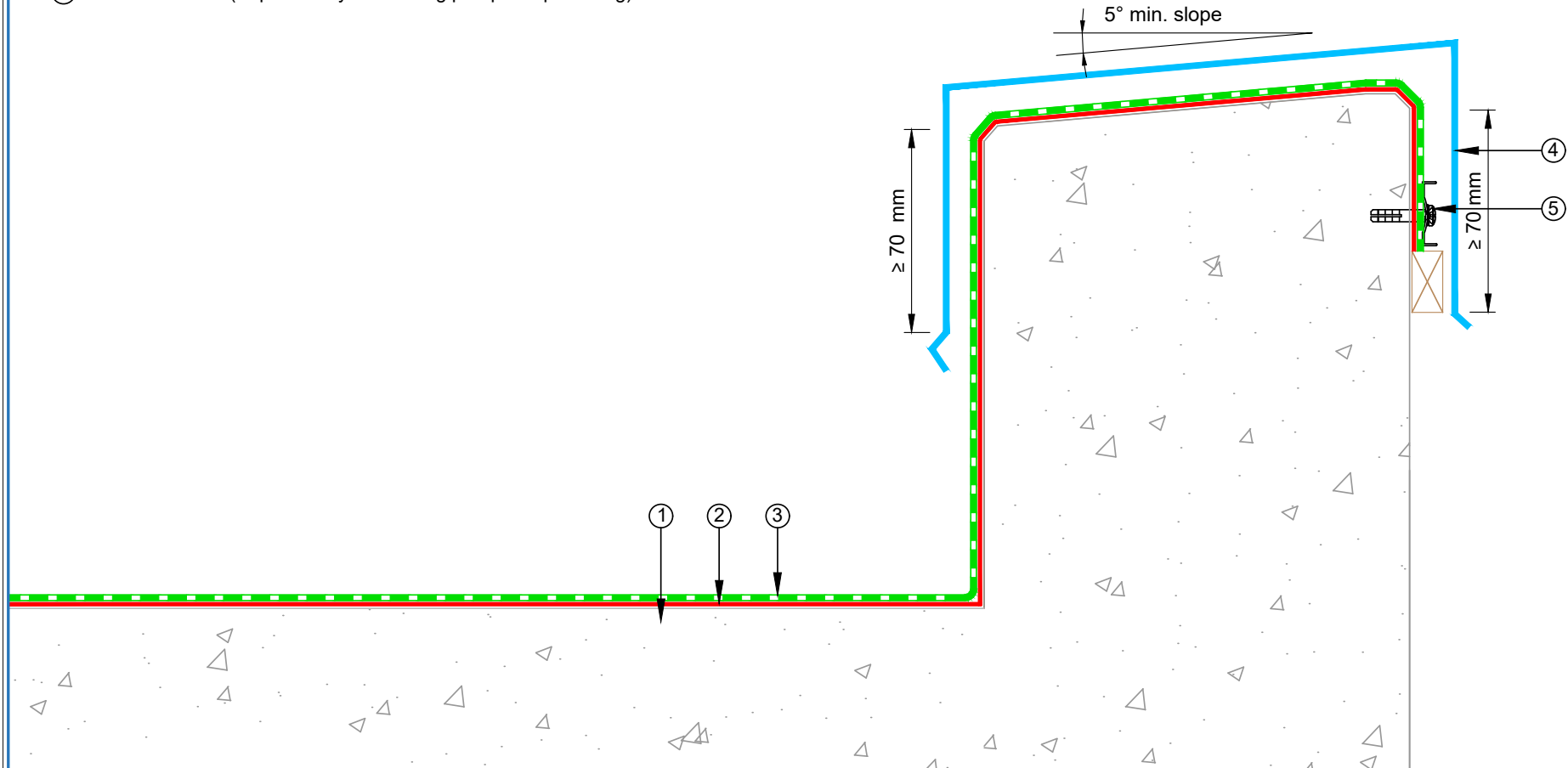


 E-mail : <a href="mailto:admin@equus.co.nz">admin@equus.co.nz</a> Web : <a href="http://www.equus.co.nz">www.equus.co.nz</a>	PROJECT :		Single ply cold roof system on concrete Standard Detail - TPO			
	TITLE :		Upstand with pressure termination bar			
	NUMBER :		STCRC-D3c	SCALE :	NTS	
	DRAWN BY :		NKT	DATE :	23-Feb-2023	REVISED :
	<p><small>Equus Waterproof Membrane Details are specially drawn for use by Local Authorities, Building Contractors, Equus Applicators, Architects and design professionals. All details are drawn to assist in the development of project specific details. Details may be modified where necessary to accommodate job specific requirements but must be approved by Equus Industries Ltd. All components must be supplied by Equus Industries Ltd. Equus reserves the right to alter or upgrade details at any time without prior notice.</small></p>					





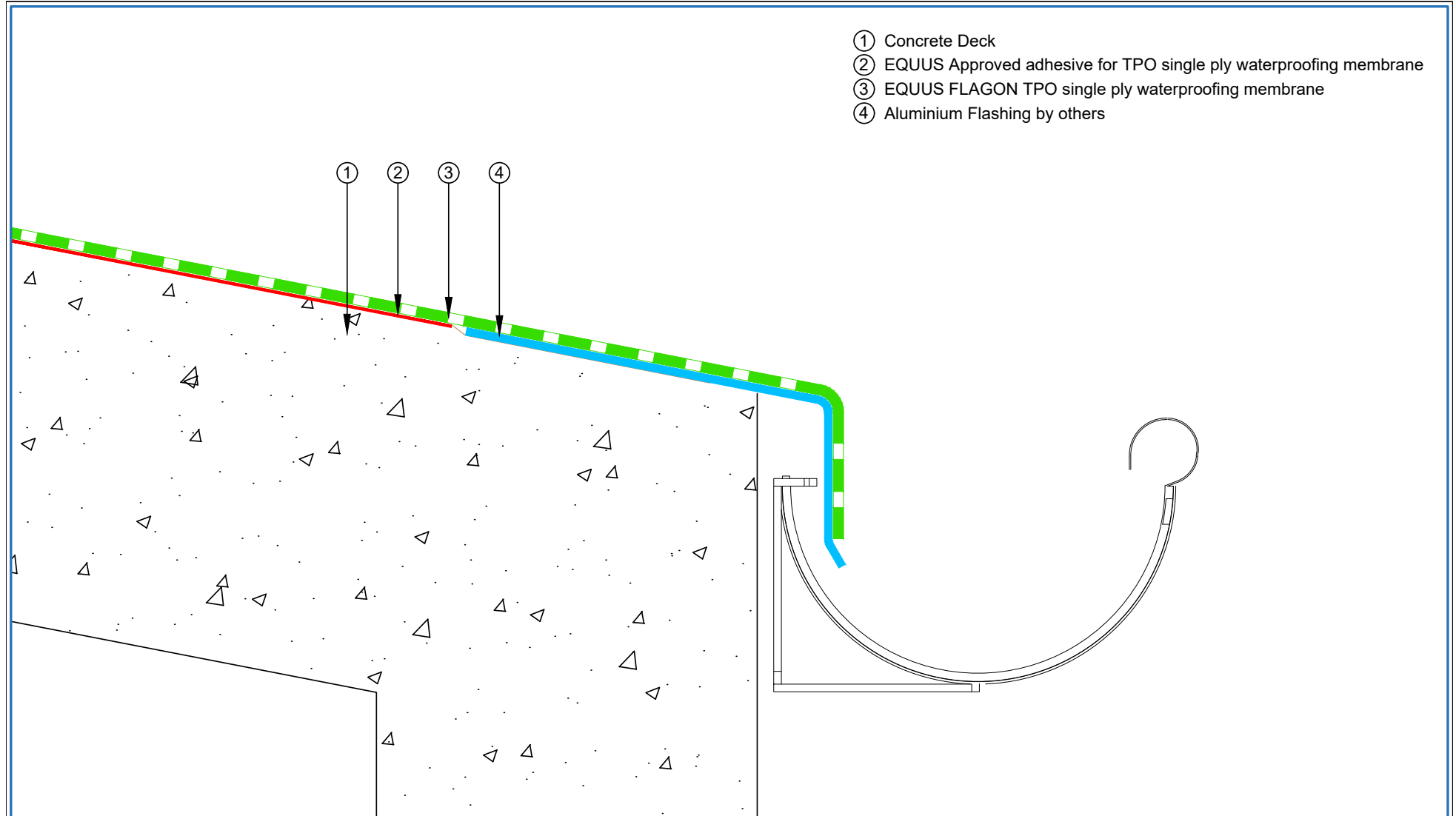
- ① Concrete Deck
- ② EQUUS Approved adhesive for TPO single ply waterproofing membrane
- ③ EQUUS FLAGON TPO single ply waterproofing membrane
- ④ Cap Flashing by others
- ⑤ Termination Bar (required only if not using parapet cap flashing)



E-mail : [admin@equus.co.nz](mailto:admin@equus.co.nz)  
Web : [www.equus.co.nz](http://www.equus.co.nz)

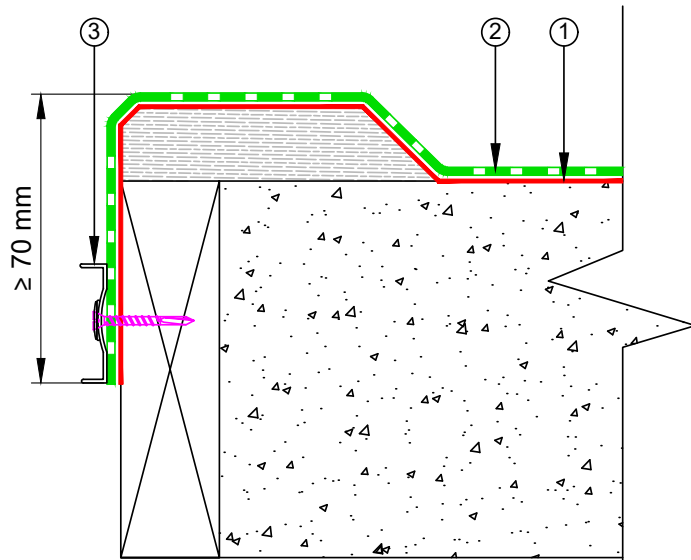
PROJECT :	Single ply cold roof system on concrete standard Detail - TPO		
TITLE :	Parapet with cap flashing		
NUMBER :	STCRC-D4a	SCALE :	1:2
DRAWN BY :	NKT	DATE :	23-Feb-2023
		REVISED :	
<p><small>Equus Waterproof Membrane Details are specially drawn for use by Local Authorities, Building Contractors, Equus Applicators, Architects and design professionals. All details are drawn to assist in the development of project specific details. Details may be modified where necessary to accommodate job specific requirements but must be approved by Equus Industries Ltd. All components must be supplied by Equus Industries Ltd. Equus reserves the right to alter or upgrade details at any time without prior notice.</small></p>			



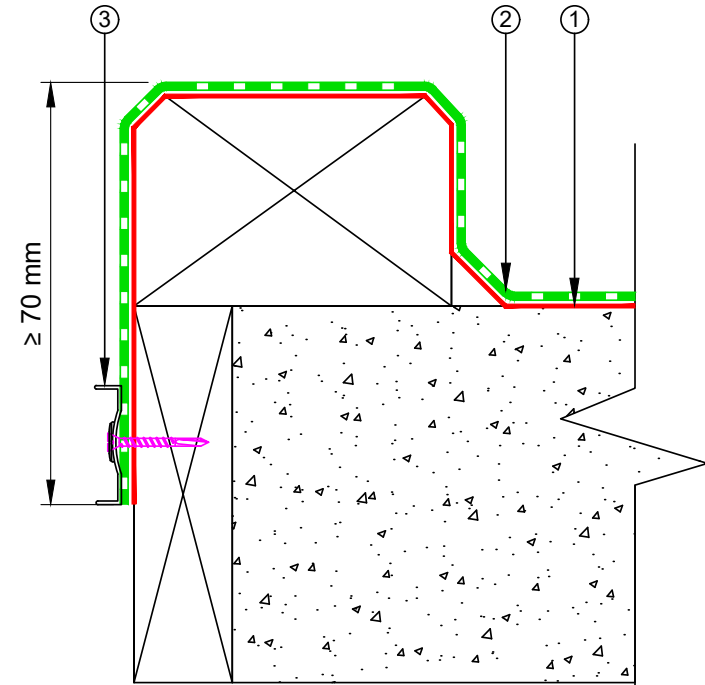


<p>E-mail : <a href="mailto:admin@equus.co.nz">admin@equus.co.nz</a> Web : <a href="http://www.equus.co.nz">www.equus.co.nz</a></p>	PROJECT :		Single ply cold roof system on concrete Standard Detail - TPO		
	TITLE :		Drip edge to spouting		
	NUMBER :		STCRC-D5a	SCALE :	NTS
	DRAWN BY :		NKT	DATE :	23-Feb-2023
				REVISED :	
<p>Equus Waterproof Membrane Details are specially drawn for use by Local Authorities, Building Contractors, Equus Applicators, Architects and design professionals. All details are drawn to assist in the development of project specific details. Details may be modified where necessary to accommodate job specific requirements but must be approved by Equus Industries Ltd. All components must be supplied by Equus Industries Ltd. Equus reserves the right to alter or upgrade details at any time without prior notice.</p>					

- ① EQUUS Approved adhesive for TPO single ply waterproofing membrane
- ② EQUUS FLAGON TPO single ply waterproofing membrane
- ③ Pressure Seal termination bar



OPTION 1



OPTION 2



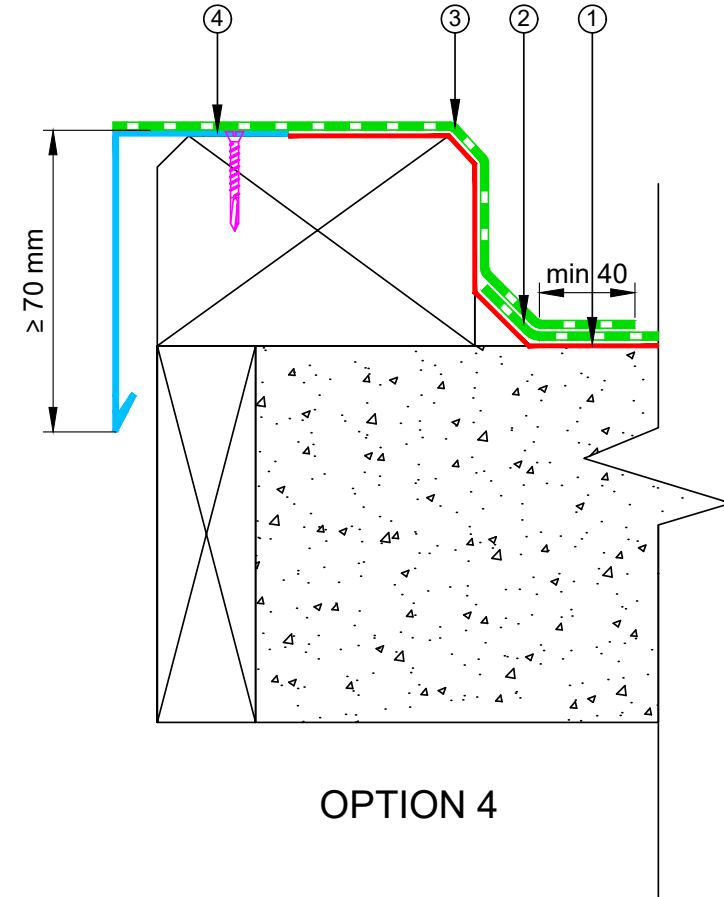
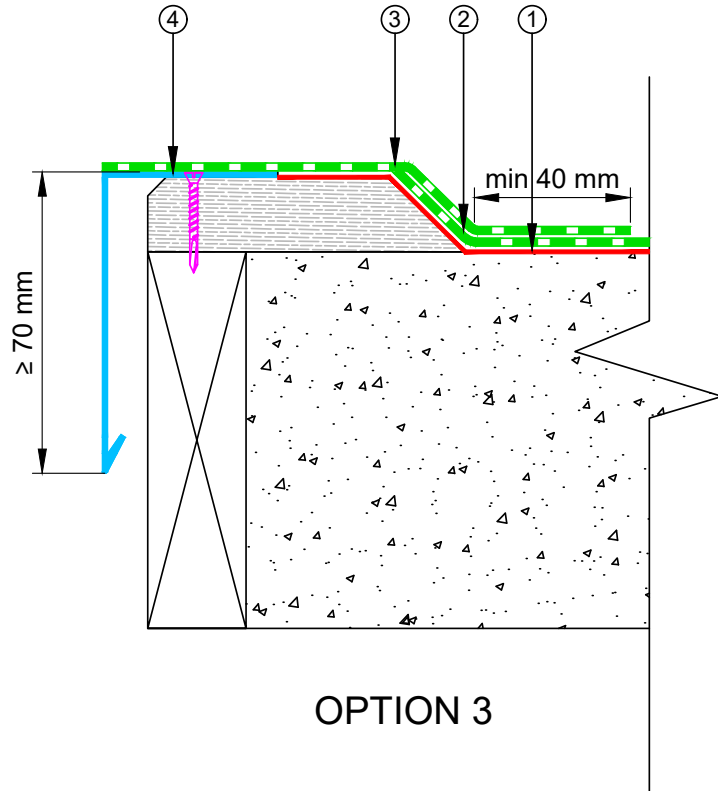
E-mail : [admin@equus.co.nz](mailto:admin@equus.co.nz)  
Web : [www.equus.co.nz](http://www.equus.co.nz)

PROJECT :	Single ply cold roof system on concrete standard Detail - TPO		
TITLE :	Roof Edge Termination option 1 and 2		
NUMBER :	STCRC-D6a	SCALE :	NTS
DRAWN BY :	NKT	DATE :	23-Feb-2023
		REVISED :	

Equus Waterproof Membrane Details are specially drawn for use by Local Authorities, Building Contractors, Equus Applicators, Architects and design professionals. All details are drawn to assist in the development of project specific details. Details may be modified where necessary to accommodate job specific requirements but must be approved by Equus Industries Ltd. All components must be supplied by Equus Industries Ltd. Equus reserves the right to alter or upgrade details at any time without prior notice.



- ① EQUUS Approved adhesive for TPO single ply waterproofing membrane
- ② EQUUS FLAGON TPO single ply waterproofing membrane
- ③ EQUUS FLAGON TPO single ply as separate piece
- ④ EQUUS TPO Coated Flag Metal Sheet custom made profile mechanically fixed

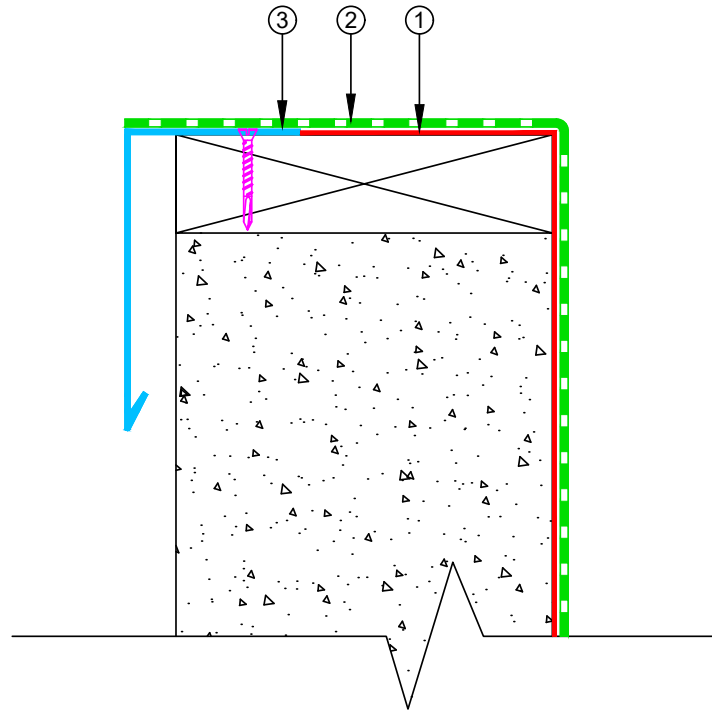


E-mail : [admin@equus.co.nz](mailto:admin@equus.co.nz)  
Web : [www.equus.co.nz](http://www.equus.co.nz)



PROJECT :	Single ply cold roof system on concrete standard Detail - TPO		
TITLE :	Roof Edge Termination option 3 and 4		
NUMBER :	STCRC-D6b	SCALE :	NTS
DRAWN BY :	NKT	DATE :	23-Feb-2023
REVISED :			
<p><small>Equus Waterproof Membrane Details are specially drawn for use by Local Authorities, Building Contractors, Equus Applicators, Architects and design professionals. All details are drawn to assist in the development of project specific details. Details may be modified where necessary to accommodate job specific requirements but must be approved by Equus Industries Ltd. All components must be supplied by Equus Industries Ltd. Equus reserves the right to alter or upgrade details at any time without prior notice.</small></p>			



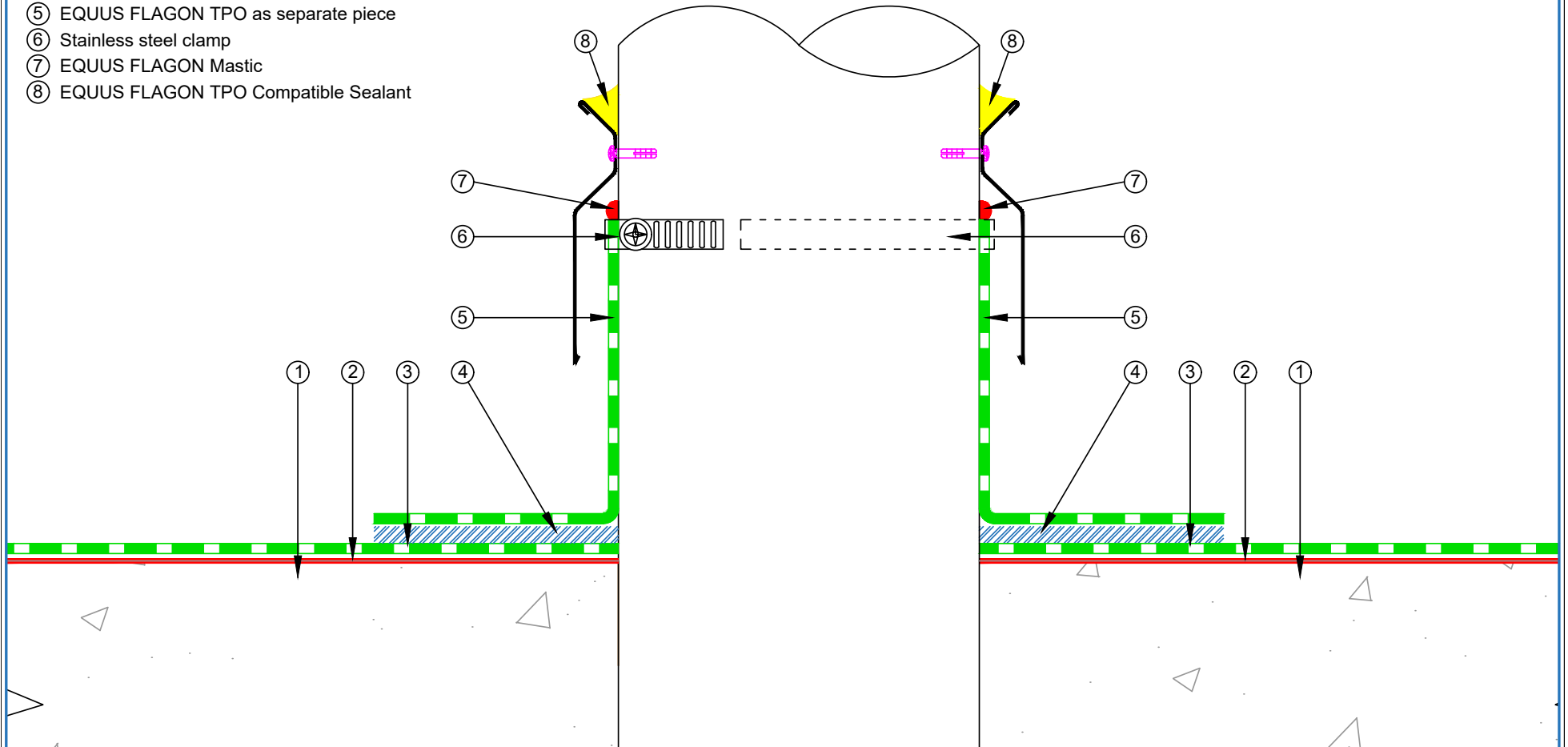
- ① EQUUS Approved adhesive for TPO single ply waterproofing membrane
- ② EQUUS FLAGON TPO single ply waterproofing membrane
- ③ EQUUS TPO Coated Flag Metal Sheet custom made profile mechanically fixed



**OPTION 5**

 E-mail : <a href="mailto:admin@equus.co.nz">admin@equus.co.nz</a> Web : <a href="http://www.equus.co.nz">www.equus.co.nz</a>	PROJECT :		Single ply cold roof system on concrete standard Detail - TPO		 AUTHORISED DISTRIBUTOR <b>SOPREMA</b>	
	TITLE :		Roof Edge Termination option 5			
	NUMBER :		STCRC-D6c	SCALE :		NTS
	DRAWN BY :	NKT	DATE :	23-Feb-2023		REVISED :
	Equus Waterproof Membrane Details are specially drawn for use by Local Authorities, Building Contractors, Equus Applicators, Architects and design professionals. All details are drawn to assist in the development of project specific details. Details may be modified where necessary to accommodate job specific requirements but must be approved by Equus Industries Ltd. All components must be supplied by Equus Industries Ltd. Equus reserves the right to alter or upgrade details at any time without prior notice.					

- ① Concrete Deck
- ② EQUUS Approved adhesive for TPO single ply waterproofing membrane
- ③ EQUUS FLAGON TPO single ply waterproofing membrane
- ④ 40 mm welded lap
- ⑤ EQUUS FLAGON TPO as separate piece
- ⑥ Stainless steel clamp
- ⑦ EQUUS FLAGON Mastic
- ⑧ EQUUS FLAGON TPO Compatible Sealant

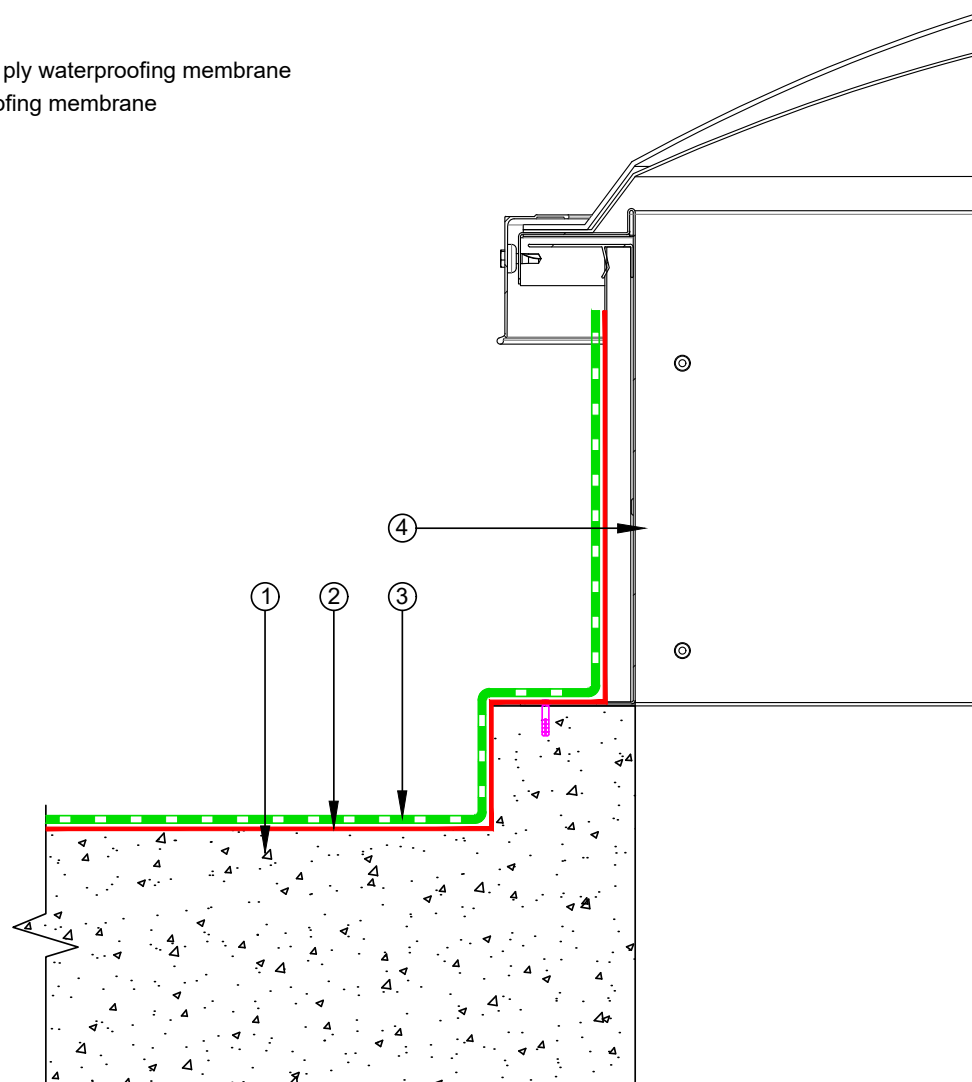


E-mail : [admin@equus.co.nz](mailto:admin@equus.co.nz)  
Web : [www.equus.co.nz](http://www.equus.co.nz)

PROJECT :	Single ply cold roof system on concrete standard Detail - TPO		
TITLE :	Roof Penetration		
NUMBER :	STCRC-D7a	SCALE :	NTS
DRAWN BY :	NKT	DATE :	23-Feb-2023
		REVISED :	
<p><small>Equus Waterproof Membrane Details are specially drawn for use by Local Authorities, Building Contractors, Equus Applicators, Architects and design professionals. All details are drawn to assist in the development of project specific details. Details may be modified where necessary to accommodate job specific requirements but must be approved by Equus Industries Ltd. All components must be supplied by Equus Industries Ltd. Equus reserves the right to alter or upgrade details at any time without prior notice.</small></p>			



- ① Concrete Deck
- ② EQUUS Approved adhesive for TPO single ply waterproofing membrane
- ③ EQUUS FLAGON TPO single ply waterproofing membrane
- ④ Skylight with flashing

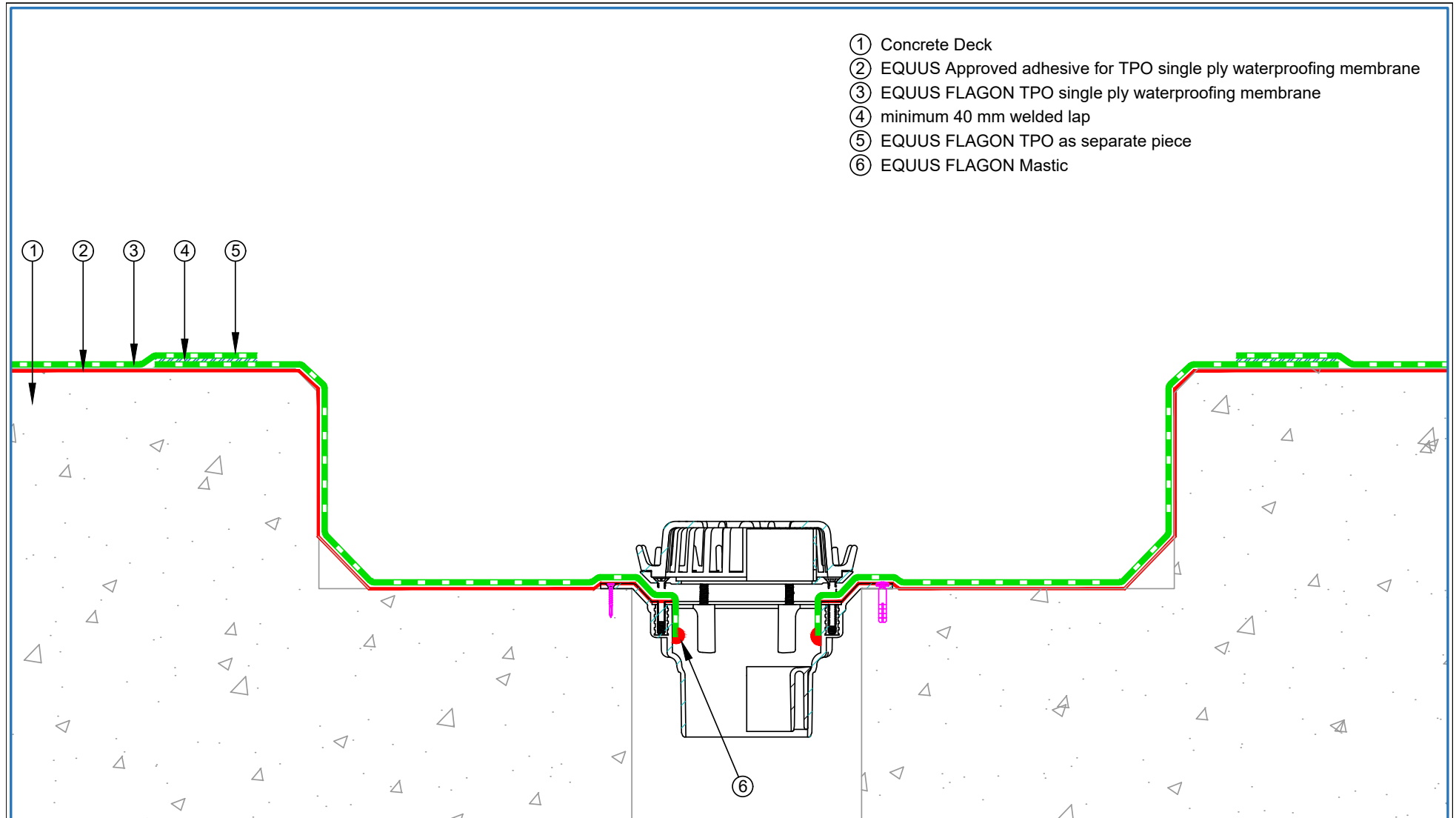


E-mail : [admin@equus.co.nz](mailto:admin@equus.co.nz)  
Web : [www.equus.co.nz](http://www.equus.co.nz)

PROJECT :	Single ply cold roof system on concrete standard Detail - TPO		
TITLE :	Skylight Detail		
NUMBER :	STCRC-D8a	SCALE :	NTS
DRAWN BY :	NKT	DATE :	23-Feb-2023
		REVISED :	

Equus Waterproof Membrane Details are specially drawn for use by Local Authorities, Building Contractors, Equus Applicators, Architects and design professionals. All details are drawn to assist in the development of project specific details. Details may be modified where necessary to accommodate job specific requirements but must be approved by Equus Industries Ltd. All components must be supplied by Equus Industries Ltd. Equus reserves the right to alter or upgrade details at any time without prior notice.



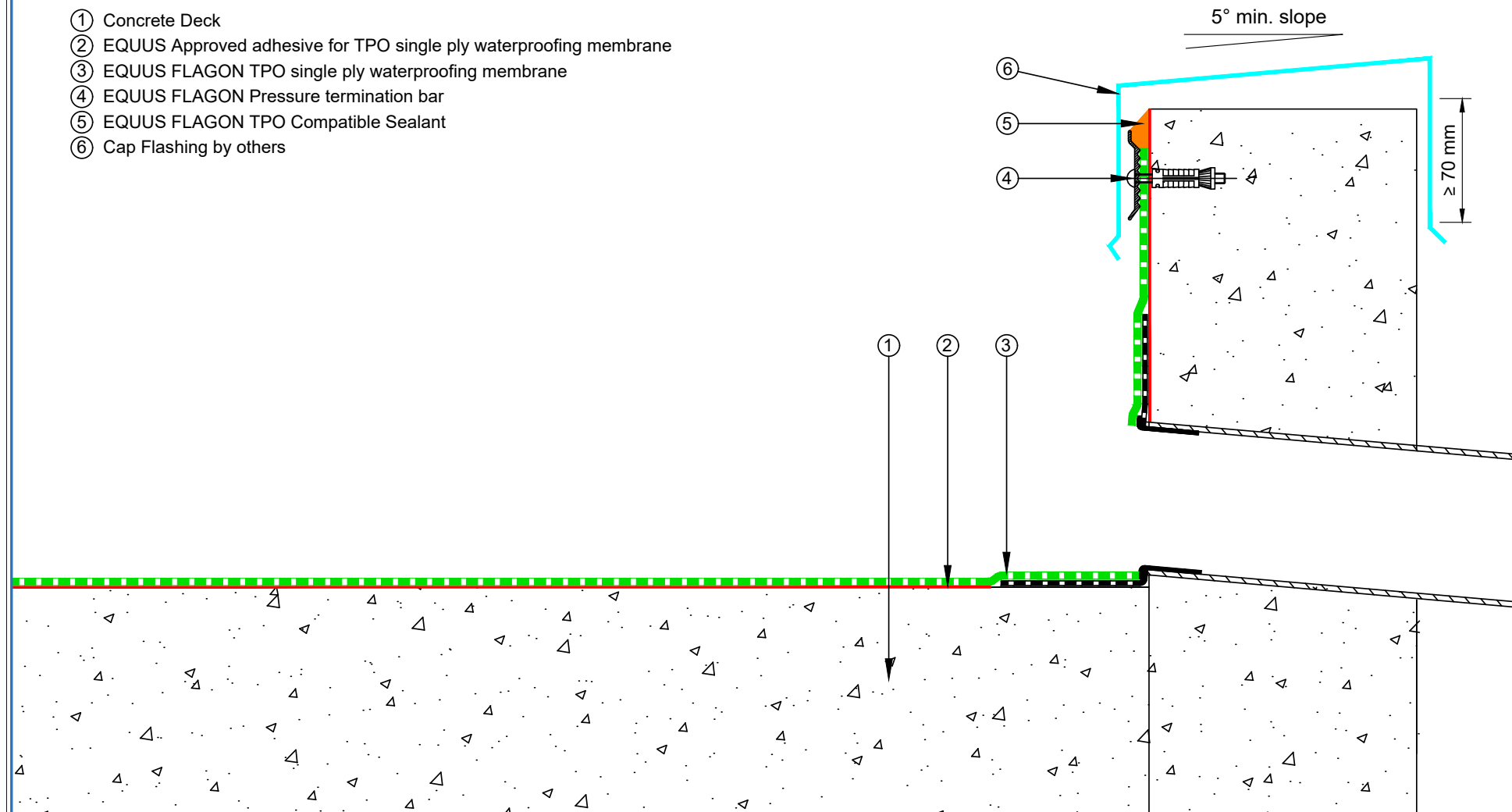


- ① Concrete Deck
- ② EQUUS Approved adhesive for TPO single ply waterproofing membrane
- ③ EQUUS FLAGON TPO single ply waterproofing membrane
- ④ minimum 40 mm welded lap
- ⑤ EQUUS FLAGON TPO as separate piece
- ⑥ EQUUS FLAGON Mastic

<p>E-mail : <a href="mailto:admin@equus.co.nz">admin@equus.co.nz</a> Web : <a href="http://www.equus.co.nz">www.equus.co.nz</a></p>	PROJECT :	Single ply cold roof system on concrete standard Detail - TPO		
	TITLE :	Gutter Outlet Detail		
	NUMBER :	STCRC-D9a	SCALE :	NTS
	DRAWN BY :	NKT	DATE :	23-Feb-2023
			REVISED :	
<p><small>Equus Waterproof Membrane Details are specially drawn for use by Local Authorities, Building Contractors, Equus Applicators, Architects and design professionals. All details are drawn to assist in the development of project specific details. Details may be modified where necessary to accommodate job specific requirements but must be approved by Equus Industries Ltd. All components must be supplied by Equus Industries Ltd. Equus reserves the right to alter or upgrade details at any time without prior notice.</small></p>				
		<p>AUTHORISED DISTRIBUTOR <b>SOPREMA</b></p>		



- ① Concrete Deck
- ② EQUUS Approved adhesive for TPO single ply waterproofing membrane
- ③ EQUUS FLAGON TPO single ply waterproofing membrane
- ④ EQUUS FLAGON Pressure termination bar
- ⑤ EQUUS FLAGON TPO Compatible Sealant
- ⑥ Cap Flashing by others



 E-mail : <a href="mailto:admin@equus.co.nz">admin@equus.co.nz</a> Web : <a href="http://www.equus.co.nz">www.equus.co.nz</a>	PROJECT :		Single ply cold roof system on concrete standard Detail - TPO	
	TITLE :		Scupper Termination	
	NUMBER :	STCRC-D10a	SCALE :	1:3
	DRAWN BY :	NKT	DATE :	23-Feb-2023
			REVISED :	
Equus Waterproof Membrane Details are specially drawn for use by Local Authorities, Building Contractors, Equus Applicators, Architects and design professionals. All details are drawn to assist in the development of project specific details. Details may be modified where necessary to accommodate job specific requirements but must be approved by Equus Industries Ltd. All components must be supplied by Equus Industries Ltd. Equus reserves the right to alter or upgrade details at any time without prior notice.				

AUTHORISED DISTRIBUTOR  
**SOPREMA**