



EQUUS SOPREMA SOPRASUN PLUS MEMBRANE SYSTEM

Standard Details on Plywood Substrate

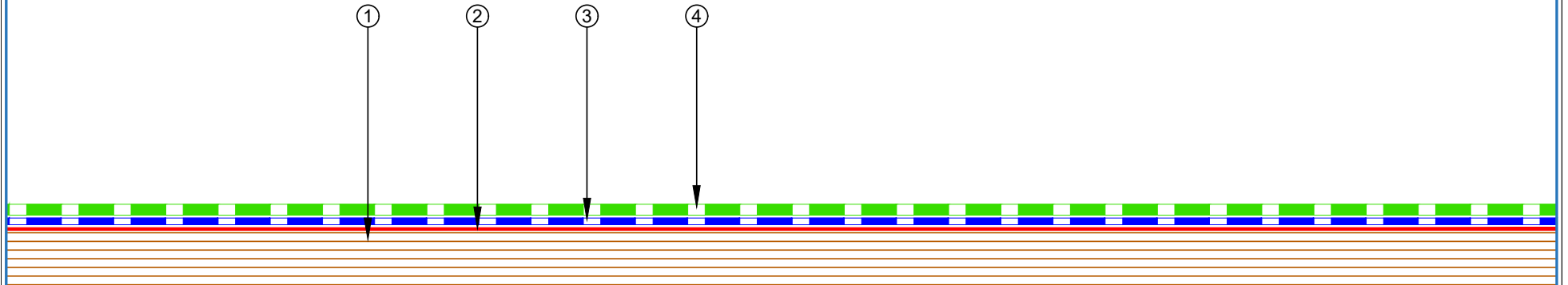




JANUARY 2025

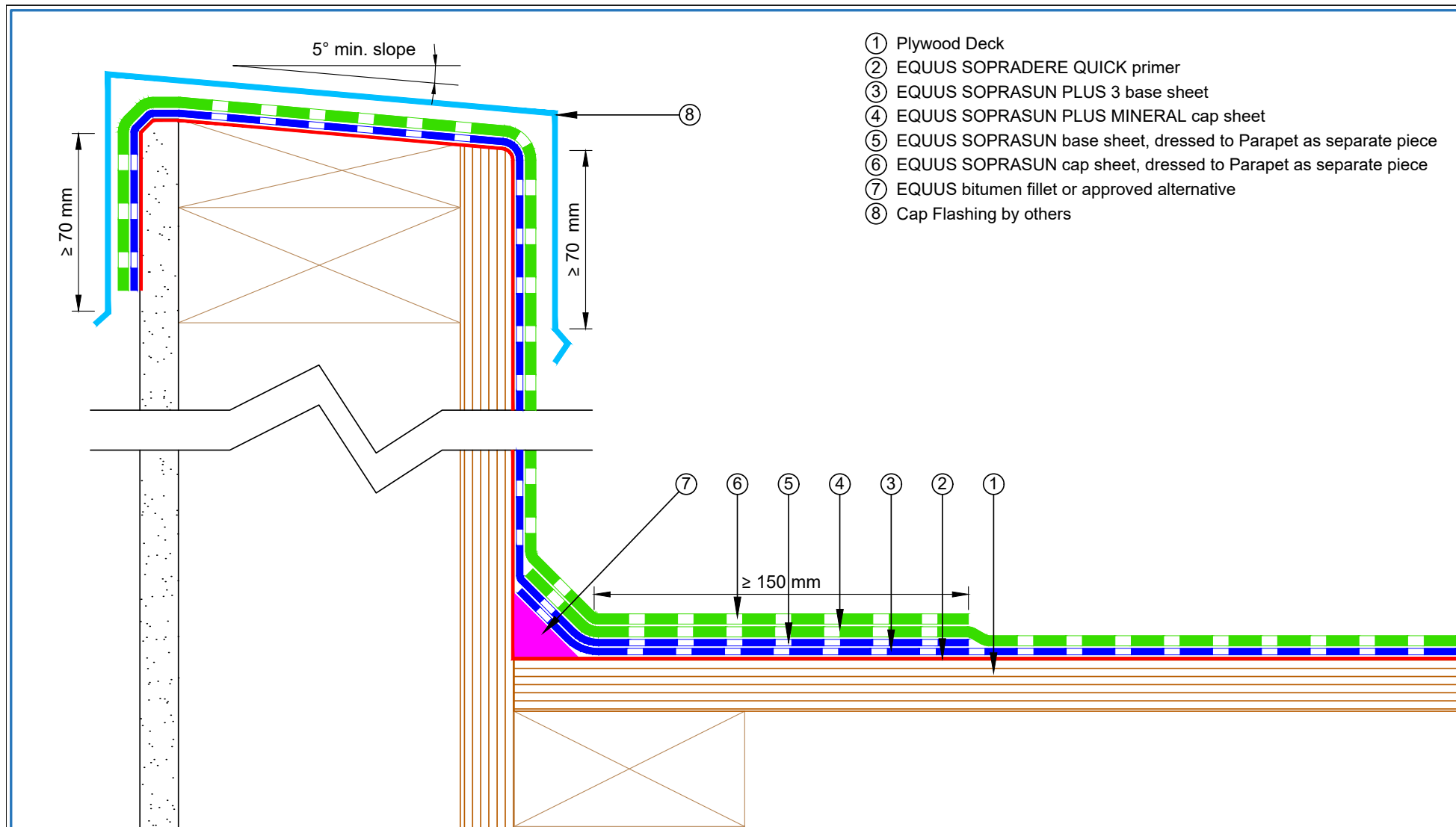
CONTENTS

SSCRP-D0a	Roof Built Up	1	SSCRP-D9a	Scupper Drain	16
SSCRP-D1a	Parapet with Cap Flashing	2	SSCRP-D9b	Aquaknight Scupper	17
SSCRP-D2a	Allproof Dome Clamp Ring Drain	3	SSCRP-D10a	Upstand Detail with Roof Edge Profile	18
SSCRP-D2b	Aquaknight HiFlow Roof Drain	4	SSCRP-D11a	Ventilation Pipe with Plinth	19
SSCRP-D3a	Internal Gutter and Parapet – Allproof Drain	5	SSCRP-D12a	Monkey Toe Walkway Fixing	20
SSCRP-D3b	Internal Gutter and Parapet – Aquaknight	6	SSCRP-D13a	Electrical Conduit	21
SSCRP-D3c	Internal Center Getter	7	SSCRP-D14a	Cable Tray Support Fixing	22
SSCRP-D4a	Pipe Penetration	8	SSCRP-D15a	Window Gutter	23
SSCRP-D4b	Pipe Penetration with Shrink Sleeve	9	SSCRP-D16a	Kick Out Flashing	24
SSCRP-D5a	Roof Equipment Support Batten	10	SSCRP-D17a	Verge Detail Without Upstand	25
SSCRP-D5b	Roof Equipment Support Batten (Optional)	11	SSCRP-D18a	Pipe Penetration Solar PV Power Conduit	26
SSCRP-D6a	Skylight Roof Hatch with Extra Cap Sheet	12	SSCRP-D19a	Ridge Waterproofing	27
SSCRP-D6b	Skylight Roof Hatch with Divertor	13	SSCRP-D20a	Roof Edge Detail	28
SSCRP-D7a	Fall Restraint	14	SSCRP-D24a	Saddle Flashing	29
SSCRP-D8a	Connection to External Gutter	15			

- ① Plywood Deck
- ② EQUUS SOPRADERE QUICK primer
- ③ EQUUS SOPRASUN PLUS 3 base sheet
- ④ EQUUS SOPRASUN PLUS MINERAL cap sheet



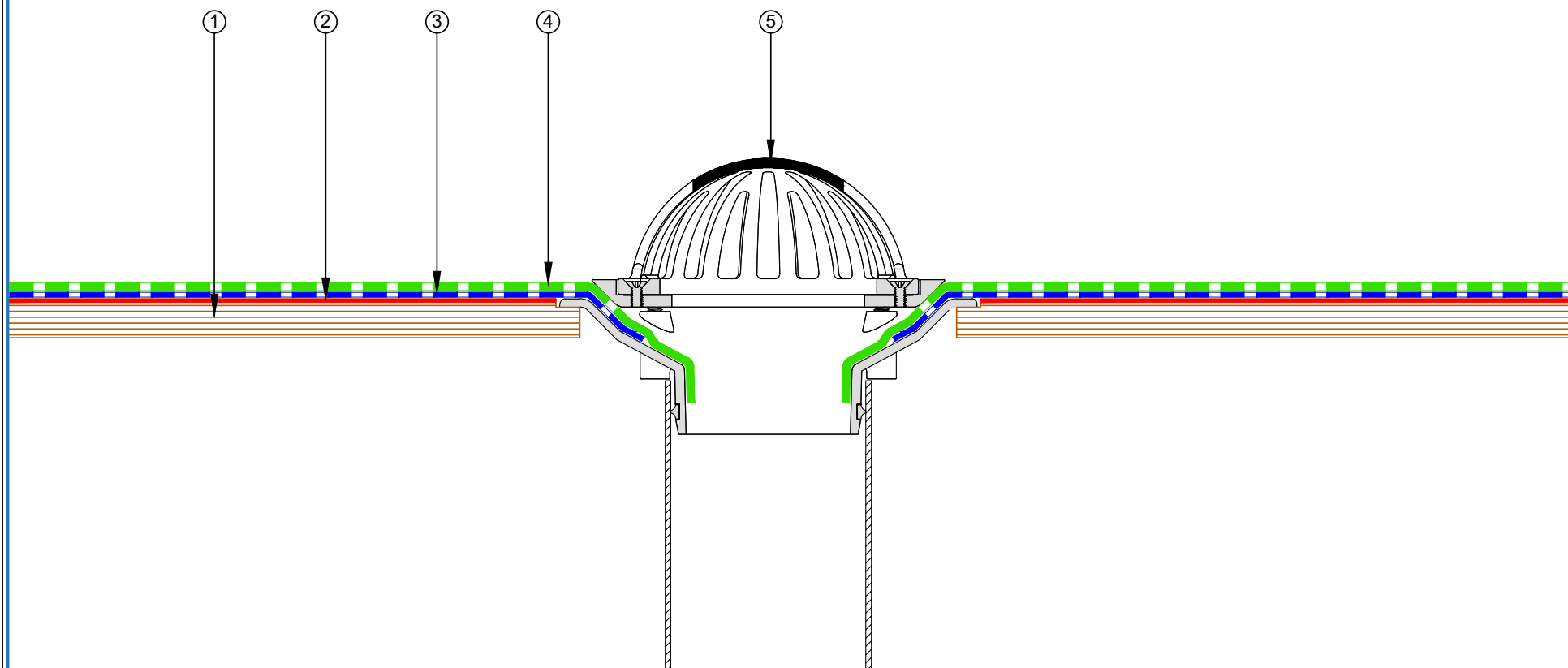
 E-mail : admin@equus.co.nz Web : www.equus.co.nz	PROJECT :		Cold Roof on Plywood Standard Detail			
	TITLE :		Roof Built Up Detail			
	NUMBER :		SSCRP-D0a	SCALE :	1:2	
	DRAWN BY :	NKT	DATE :	15-Jun-2022	REVISED :	
	<small>Equus Waterproof Membrane Details are specially drawn for use by Local Authorities, Building Contractors, Equus Applicators, Architects and design professionals. All details are drawn to assist in the development of project specific details. Details may be modified where necessary to accommodate job specific requirements but must be approved by Equus Industries Ltd. All components must be supplied by Equus Industries Ltd. Equus reserves the right to alter or upgrade details at any time without prior notice.</small>					
			 AUTHORISED DISTRIBUTOR SOPREMA			



<p>E-mail : admin@equus.co.nz Web : www.equus.co.nz</p>	PROJECT :		Cold Roof on Plywood Standard Detail	
	TITLE :		Parapet with cap flashing	
	NUMBER :	SSCRP-D1a	SCALE :	1:2
	DRAWN BY :	NKT	DATE :	15-Jun-2022
	REVISD :			
<p>Equus Waterproof Membrane Details are specially drawn for use by Local Authorities, Building Contractors, Equus Applicators, Architects and design professionals. All details are drawn to assist in the development of project specific details. Details may be modified where necessary to accommodate job specific requirements but must be approved by Equus Industries Ltd. All components must be supplied by Equus Industries Ltd. Equus reserves the right to alter or upgrade details at any time without prior notice.</p>				

AUTHORISED DISTRIBUTOR
SOPREMA

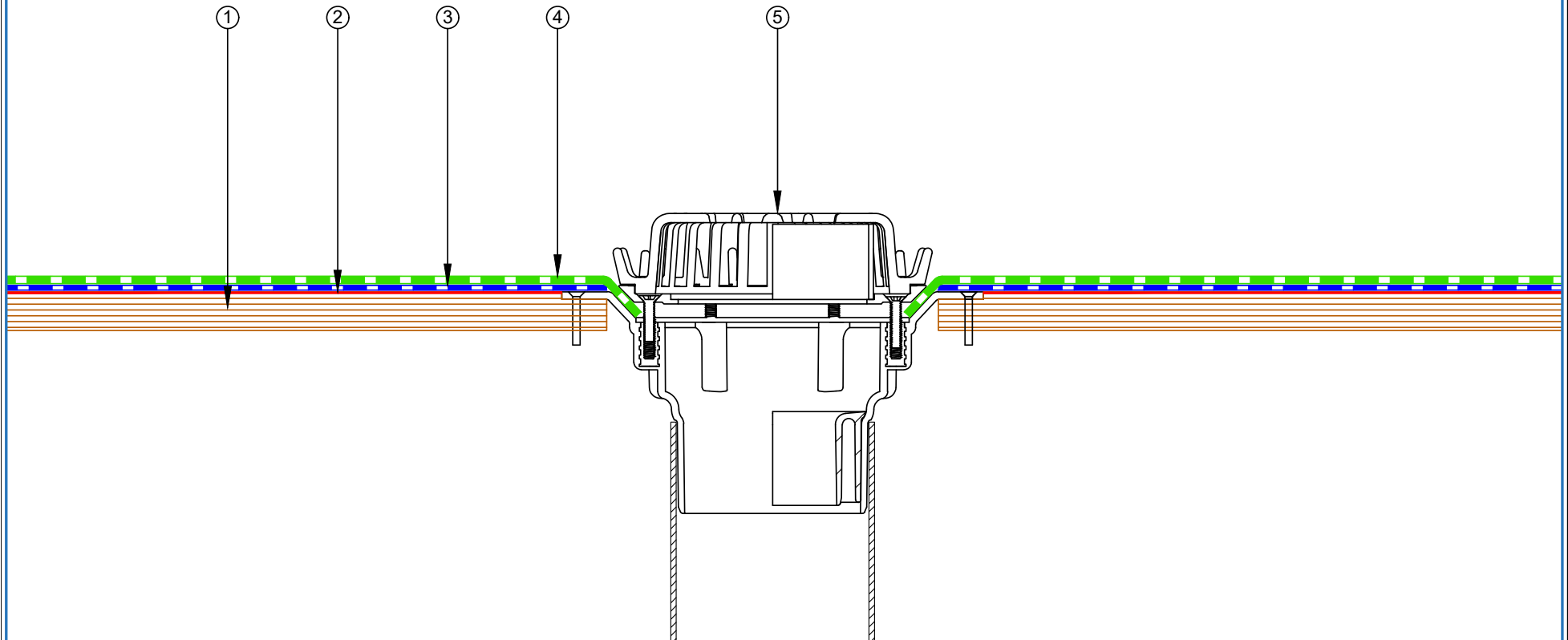
- ① Plywood Deck
- ② EQUUS SOPRADERE QUICK primer
- ③ EQUUS SOPRASUN PLUS 3 base sheet
- ④ EQUUS SOPRASUN PLUS MINERAL cap sheet
- ⑤ Allproof Dome Clamp Ring Drain



 E-mail : admin@equus.co.nz Web : www.equus.co.nz	PROJECT :		Cold Roof on Plywood Standard Detail		
	TITLE :		Allproof dome clamp ring drain		
	NUMBER :		SSCRP-D2a	SCALE :	1:3
	DRAWN BY :	NKT	DATE :	15-Jun-2022	REVISED :
	Equus Waterproof Membrane Details are specially drawn for use by Local Authorities, Building Contractors, Equus Applicators, Architects and design professionals. All details are drawn to assist in the development of project specific details. Details may be modified where necessary to accommodate job specific requirements but must be approved by Equus Industries Ltd. All components must be supplied by Equus Industries Ltd. Equus reserves the right to alter or upgrade details at any time without prior notice.				

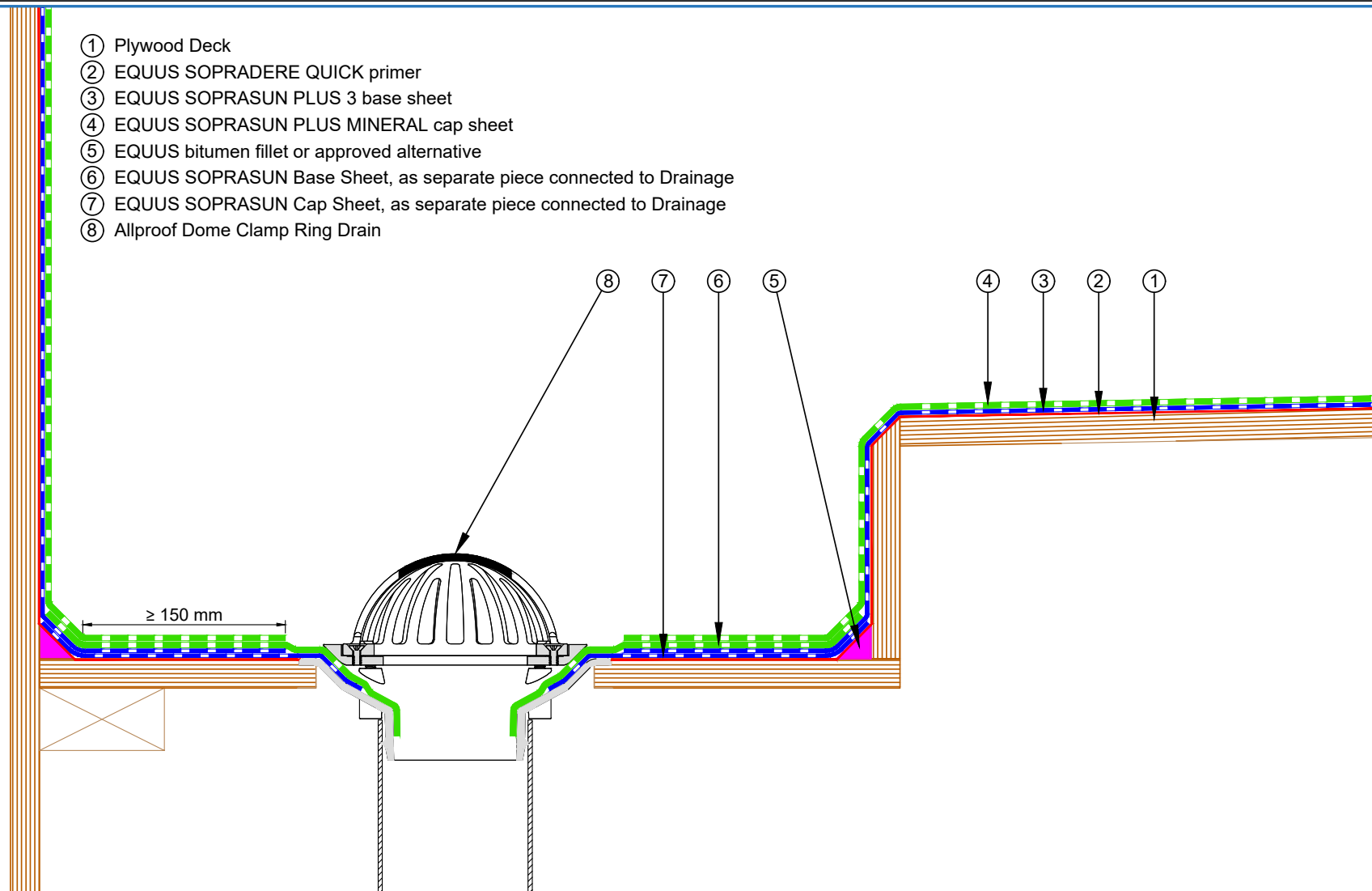


- ① Plywood Deck
- ② EQUUS SOPRADERE QUICK primer
- ③ EQUUS SOPRASUN PLUS 3 base sheet
- ④ EQUUS SOPRASUN PLUS MINERAL cap sheet
- ⑤ Aquaknight HiFlow roof drain



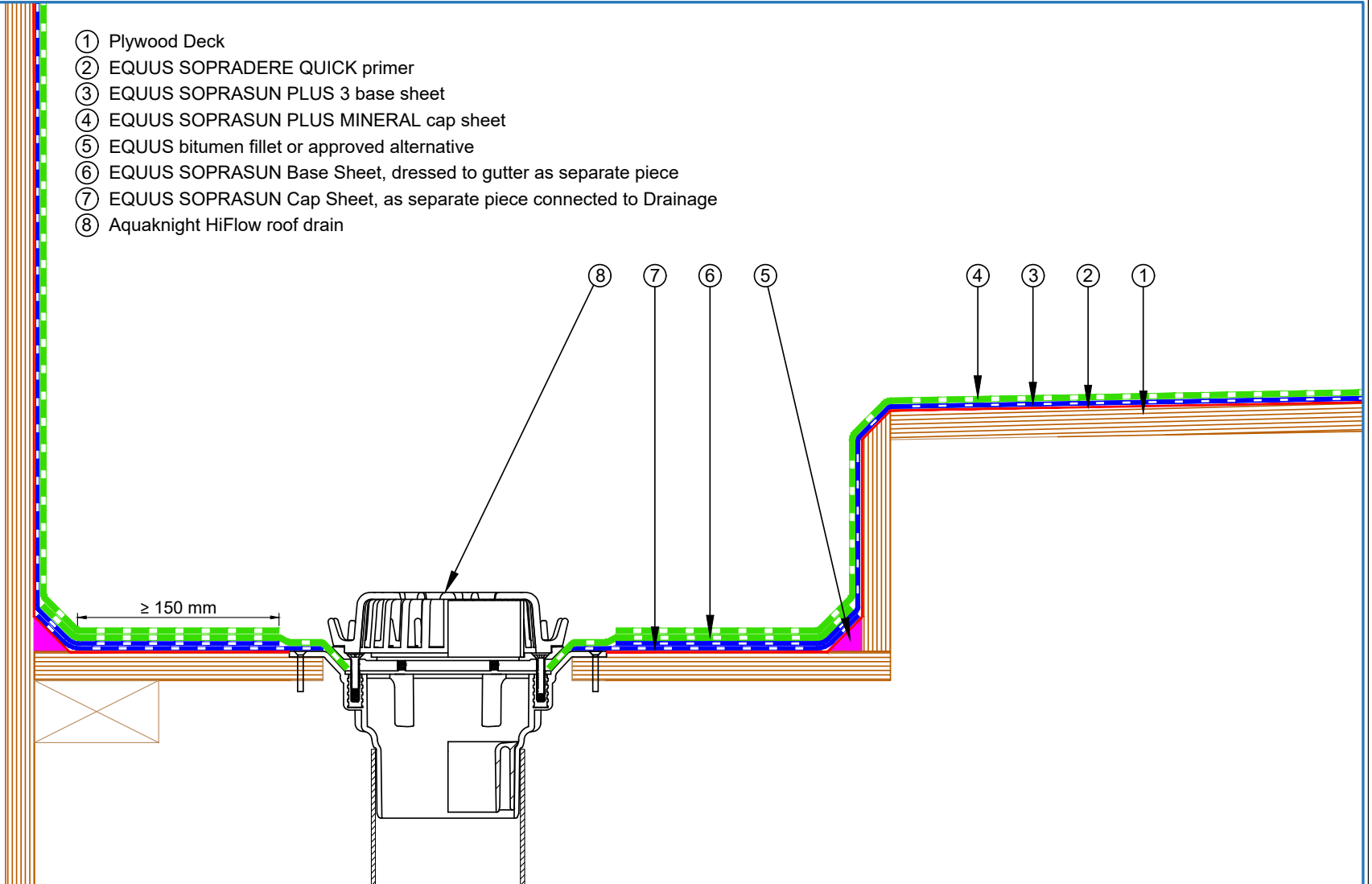
<p>E-mail : admin@equus.co.nz Web : www.equus.co.nz</p>	PROJECT :		Cold Roof on Plywood Standard Detail		<p>AUTHORISED DISTRIBUTOR SOPREMA</p>		
	TITLE :		Aquaknight HiFlow roof drain				
	NUMBER :	SSCRP-D2b	SCALE :	1:3			
	DRAWN BY :	NKT	DATE :	15-Jun-2022		REVISED :	
	<p>Equus Waterproof Membrane Details are specially drawn for use by Local Authorities, Building Contractors, Equus Applicators, Architects and design professionals. All details are drawn to assist in the development of project specific details. Details may be modified where necessary to accommodate job specific requirements but must be approved by Equus Industries Ltd. All components must be supplied by Equus Industries Ltd. Equus reserves the right to alter or upgrade details at any time without prior notice.</p>						

- ① Plywood Deck
- ② EQUUS SOPRADERE QUICK primer
- ③ EQUUS SOPRASUN PLUS 3 base sheet
- ④ EQUUS SOPRASUN PLUS MINERAL cap sheet
- ⑤ EQUUS bitumen fillet or approved alternative
- ⑥ EQUUS SOPRASUN Base Sheet, as separate piece connected to Drainage
- ⑦ EQUUS SOPRASUN Cap Sheet, as separate piece connected to Drainage
- ⑧ Allproof Dome Clamp Ring Drain



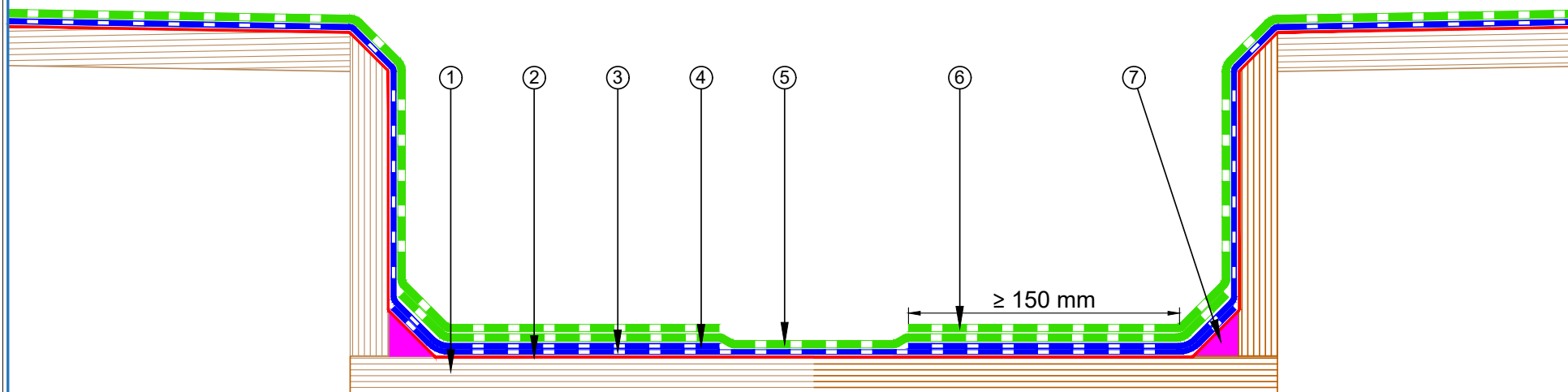
 E-mail : admin@equus.co.nz Web : www.equus.co.nz	PROJECT :		Cold Roof on Plywood Standard Detail		 AUTHORISED DISTRIBUTOR SOPREMA		
	TITLE :		Internal Gutter and parapet - Allproof Drain				
	NUMBER :	SSCRP-D3a	SCALE :	1:4			
	DRAWN BY :	NKT	DATE :	15-Jun-2022		REVISED :	
	Equus Waterproof Membrane Details are specially drawn for use by Local Authorities, Building Contractors, Equus Applicators, Architects and design professionals. All details are drawn to assist in the development of project specific details. Details may be modified where necessary to accommodate job specific requirements but must be approved by Equus Industries Ltd. All components must be supplied by Equus Industries Ltd. Equus reserves the right to alter or upgrade details at any time without prior notice.						

- ① Plywood Deck
- ② EQUUS SOPRADERE QUICK primer
- ③ EQUUS SOPRASUN PLUS 3 base sheet
- ④ EQUUS SOPRASUN PLUS MINERAL cap sheet
- ⑤ EQUUS bitumen fillet or approved alternative
- ⑥ EQUUS SOPRASUN Base Sheet, dressed to gutter as separate piece
- ⑦ EQUUS SOPRASUN Cap Sheet, as separate piece connected to Drainage
- ⑧ Aquaknight HiFlow roof drain



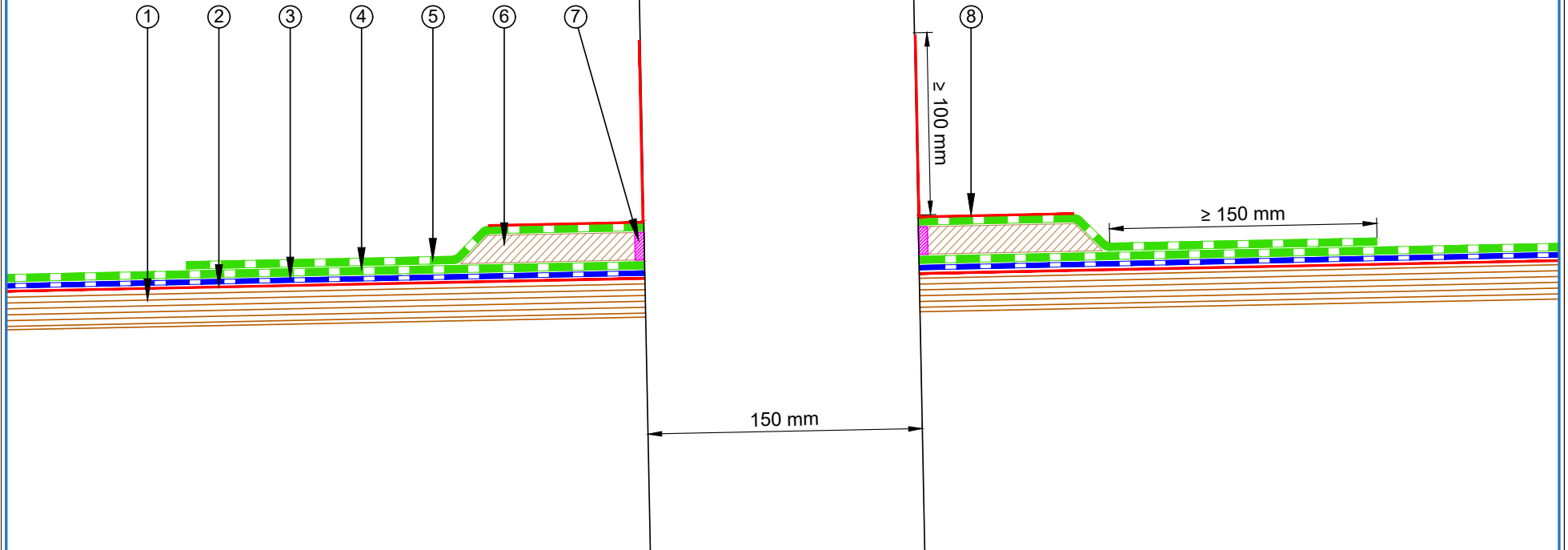
 E-mail : admin@equus.co.nz Web : www.equus.co.nz	PROJECT :		Cold Roof on Plywood Standard Detail		 AUTHORISED DISTRIBUTOR SOPREMA		
	TITLE :		Internal Gutter and parapet - Aquaknight HiFlow roof drain				
	NUMBER :	SSCRP-D3b	SCALE :	1:4			
	DRAWN BY :	NKT	DATE :	15-Jun-2022		REVISED :	
	Equus Waterproof Membrane Details are specially drawn for use by Local Authorities, Building Contractors, Equus Applicators, Architects and design professionals. All details are drawn to assist in the development of project specific details. Details may be modified where necessary to accommodate job specific requirements but must be approved by Equus Industries Ltd. All components must be supplied by Equus Industries Ltd. Equus reserves the right to alter or upgrade details at any time without prior notice.						

- ① Plywood Deck
- ② EQUUS SOPRADERE QUICK primer
- ③ EQUUS SOPASUN PLUS 3 base sheet
- ④ EQUUS SOPASUN base sheet as separate piece
- ⑤ EQUUS SOPRASUN PLUS MINERAL cap sheet
- ⑥ EQUUS SOPASUN cap sheet as separate piece
- ⑦ EQUUS bitumen fillet or approved alternative



PROJECT :	Cold Roof on Plywood Standard Detail		
TITLE :	Internal Center Getter		
NUMBER :	SSCRP-D3c	SCALE :	1:3
DRAWN BY :	NKT	DATE :	15-Jun-2022
		REVISED :	
<p><small>Equus Waterproof Membrane Details are specially drawn for use by Local Authorities, Building Contractors, Equus Applicators, Architects and design professionals. All details are drawn to assist in the development of project specific details. Details may be modified where necessary to accommodate job specific requirements but must be approved by Equus Industries Ltd. All components must be supplied by Equus Industries Ltd. Equus reserves the right to alter or upgrade details at any time without prior notice.</small></p>			

- ① Plywood Deck
 - ② EQUUS SOPRADERE QUICK primer
 - ③ EQUUS SOPRASUN PLUS 3 base sheet
 - ④ EQUUS SOPRASUN PLUS MINERAL cap sheet
 - ⑤ EQUUS SOPRASUN cap sheet as separate piece over Plywood Plinth
 - ⑥ Plywood Plinth
 - ⑦ EQUUS Alsan Mastic 2200 bitumen sealant
 - ⑧ EQUUS Alsan Flashing (Quadro) or Equus Matacryl
 - ⑨ SHS penetration
- Note: check compatibility with pipe material

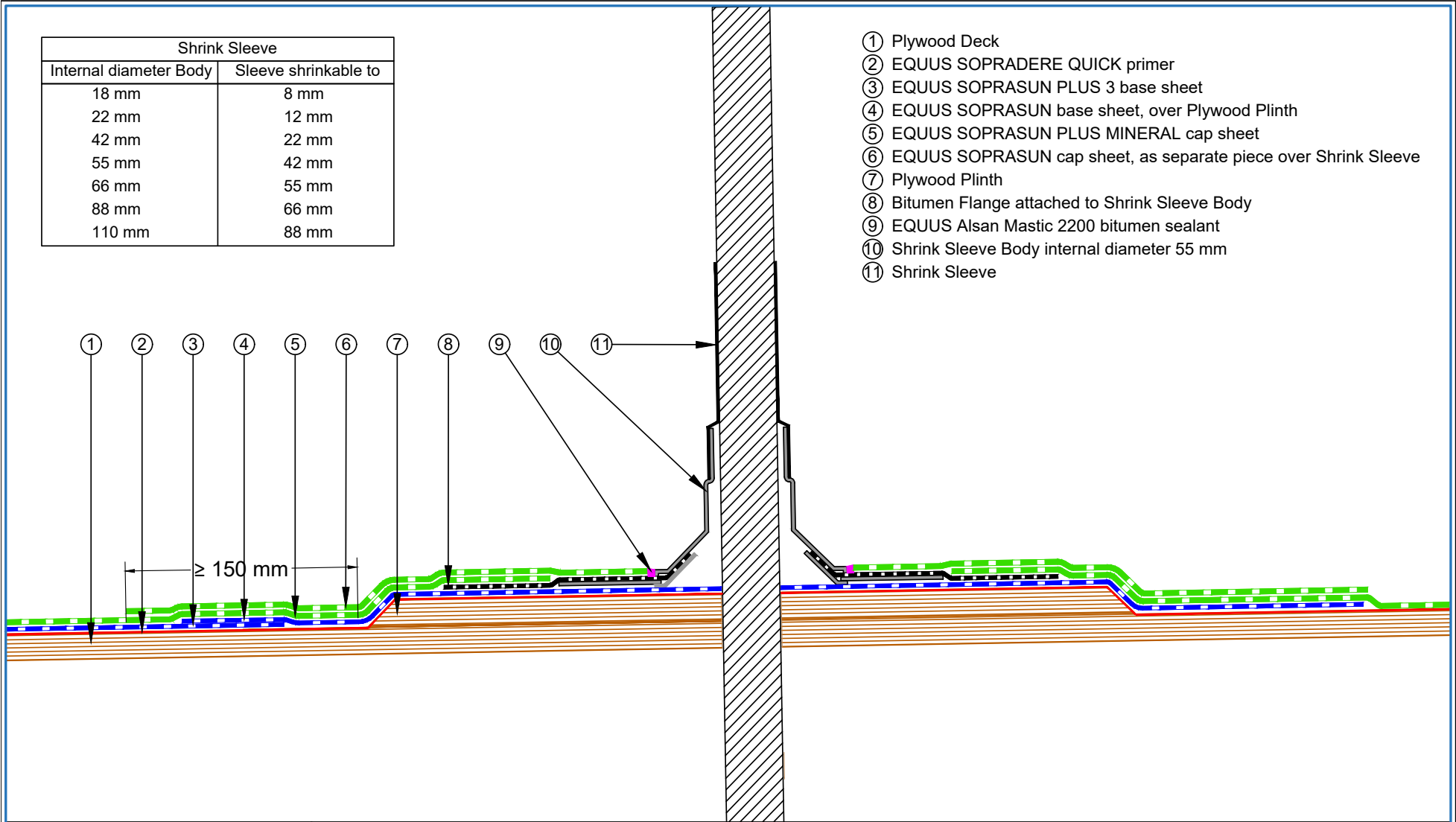


 E-mail : admin@equus.co.nz Web : www.equus.co.nz	PROJECT :		Cold Roof on Plywood Standard Detail		
	TITLE :		Pipe Penetration		
	NUMBER :		SSCRP-D4a	SCALE :	1:3
	DRAWN BY :	NKT	DATE :	15-Jun-2022	REVISED :
	Equus Waterproof Membrane Details are specially drawn for use by Local Authorities, Building Contractors, Equus Applicators, Architects and design professionals. All details are drawn to assist in the development of project specific details. Details may be modified where necessary to accommodate job specific requirements but must be approved by Equus Industries Ltd. All components must be supplied by Equus Industries Ltd. Equus reserves the right to alter or upgrade details at any time without prior notice.				



Shrink Sleeve	
Internal diameter Body	Sleeve shrinkable to
18 mm	8 mm
22 mm	12 mm
42 mm	22 mm
55 mm	42 mm
66 mm	55 mm
88 mm	66 mm
110 mm	88 mm

- ① Plywood Deck
- ② EQUUS SOPRADERE QUICK primer
- ③ EQUUS SOPRASUN PLUS 3 base sheet
- ④ EQUUS SOPRASUN base sheet, over Plywood Plinth
- ⑤ EQUUS SOPRASUN PLUS MINERAL cap sheet
- ⑥ EQUUS SOPRASUN cap sheet, as separate piece over Shrink Sleeve
- ⑦ Plywood Plinth
- ⑧ Bitumen Flange attached to Shrink Sleeve Body
- ⑨ EQUUS Alsan Mastic 2200 bitumen sealant
- ⑩ Shrink Sleeve Body internal diameter 55 mm
- ⑪ Shrink Sleeve



equus
E-mail : admin@equus.co.nz
Web : www.equus.co.nz

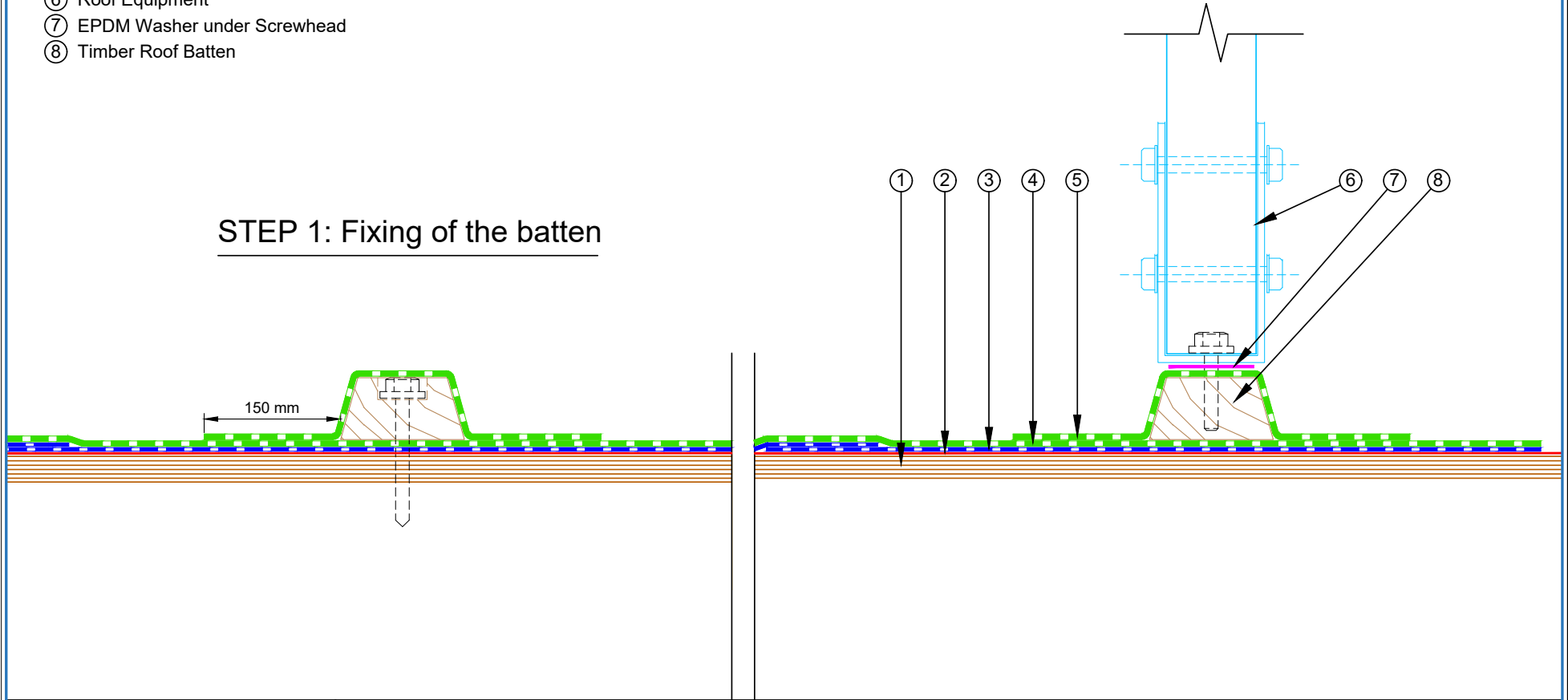
PROJECT :	Cold Roof on Plywood Standard Detail		
TITLE :	Pipe Penetration with Shrink Sleeve		
NUMBER :	SSCRP-D4b	SCALE :	1:4
DRAWN BY :	NKT	DATE :	15-Jun-2022
		REVISED :	
<p><small>Equus Waterproof Membrane Details are specially drawn for use by Local Authorities, Building Contractors, Equus Applicators, Architects and design professionals. All details are drawn to assist in the development of project specific details. Details may be modified where necessary to accommodate job specific requirements but must be approved by Equus Industries Ltd. All components must be supplied by Equus Industries Ltd. Equus reserves the right to alter or upgrade details at any time without prior notice.</small></p>			

AUTHORISED DISTRIBUTOR
SOPREMA

- ① Plywood Deck
- ② EQUUS SOPRADERE QUICK primer
- ③ EQUUS SOPRASUN PLUS 3 base sheet
- ④ EQUUS SOPRASUN PLUS MINERAL cap sheet
- ⑤ EQUUS SOPRASUN cap sheet as separate piece over Batten
- ⑥ Roof Equipment
- ⑦ EPDM Washer under Screwhead
- ⑧ Timber Roof Batten

STEP 2: Fixing of the Equipment

STEP 1: Fixing of the batten

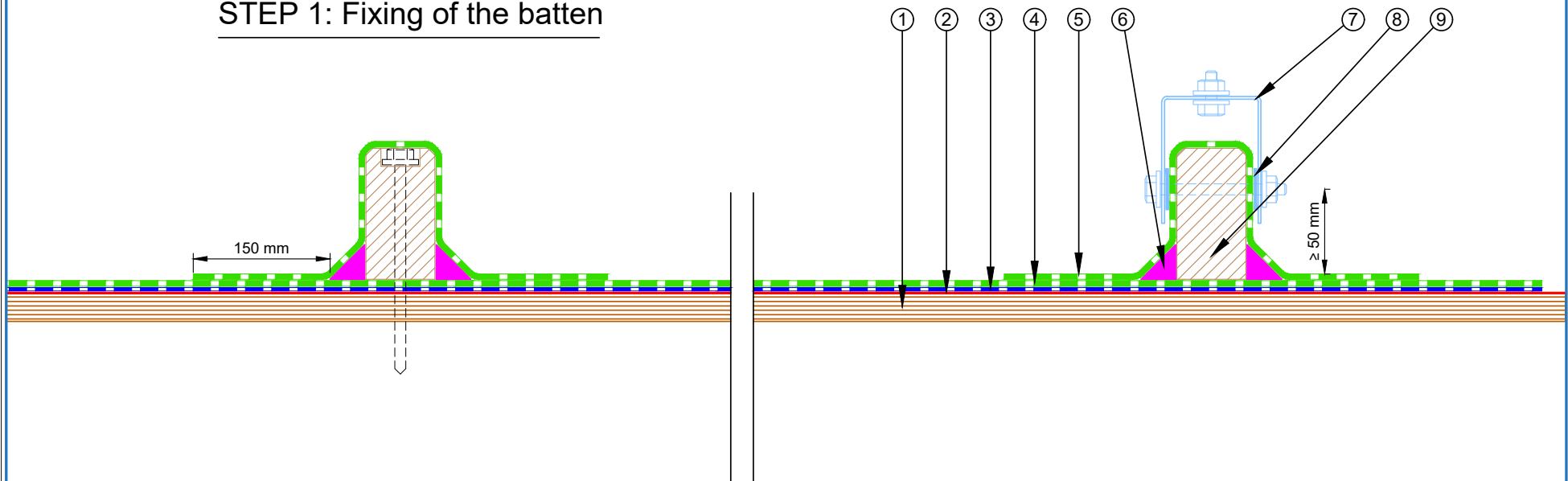


<p>E-mail : admin@equus.co.nz Web : www.equus.co.nz</p>	PROJECT :	Cold Roof on Plywood Standard Detail		
	TITLE :	Roof Equipment Support Batten		
	NUMBER :	SSCRP-D5a	SCALE :	1:4
	DRAWN BY :	NKT	DATE :	15-Jun-2022
			REVISED :	
<p>Equus Waterproof Membrane Details are specially drawn for use by Local Authorities, Building Contractors, Equus Applicators, Architects and design professionals. All details are drawn to assist in the development of project specific details. Details may be modified where necessary to accommodate job specific requirements but must be approved by Equus Industries Ltd. All components must be supplied by Equus Industries Ltd. Equus reserves the right to alter or upgrade details at any time without prior notice.</p>				
		<p>AUTHORISED DISTRIBUTOR SOPREMA</p>		

- ① Plywood Deck
- ② EQUUS SOPRADERE QUICK primer
- ③ EQUUS SOPRASUN PLUS 3 base sheet
- ④ EQUUS SOPRASUN PLUS MINERAL cap sheet
- ⑤ EQUUS SOPRASUN cap sheet as separate piece over Batten
- ⑥ EQUUS bitumen fillet or approved alternative
- ⑦ Roof Equipment Bracket
- ⑧ EPDM Washer
- ⑨ Timber Roof Batten

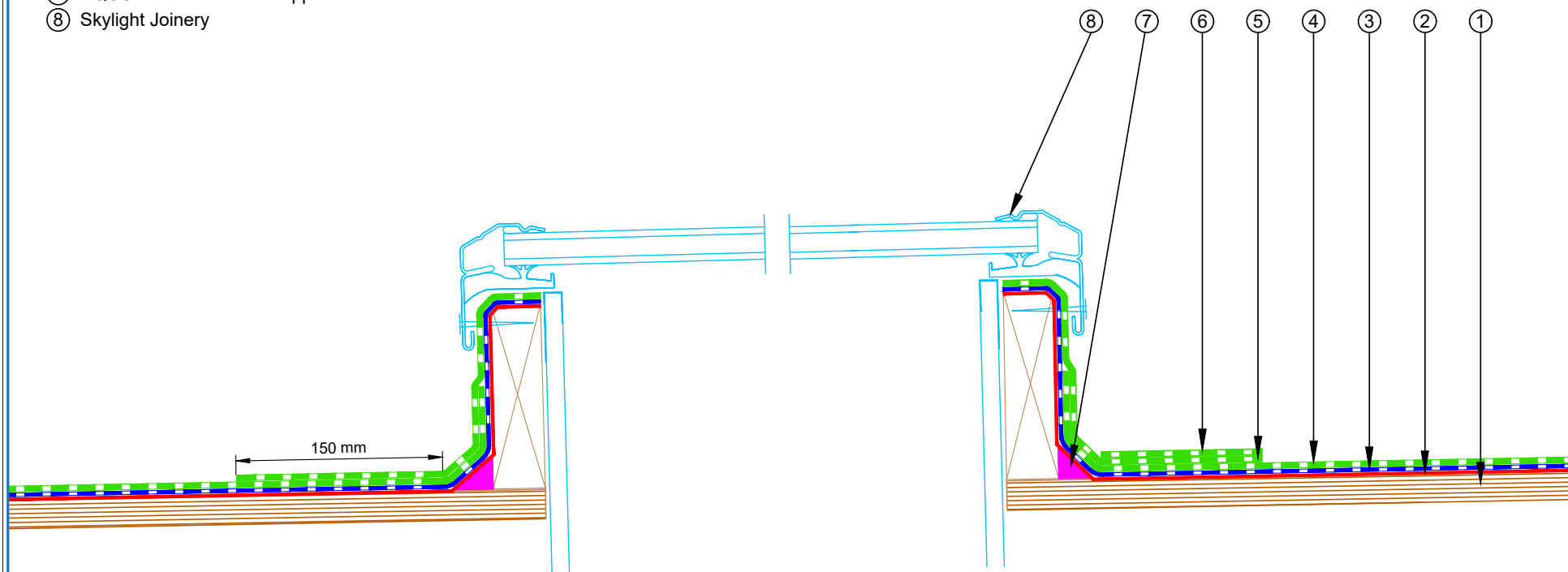
STEP 2: Fixing of the Equipment

STEP 1: Fixing of the batten



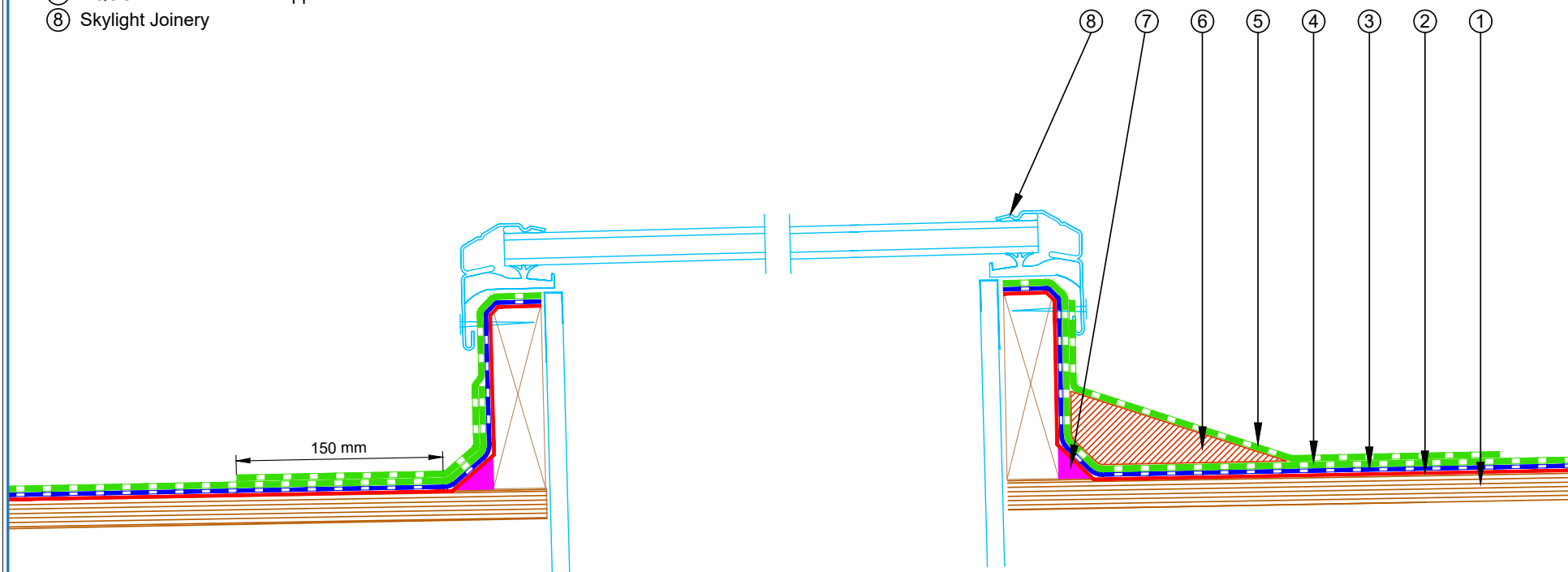
<p>E-mail : admin@equus.co.nz Web : www.equus.co.nz</p>	PROJECT :	Cold Roof on Plywood Standard Detail		
	TITLE :	Roof Equipment Support Batten (Optional)		
	NUMBER :	SSCRP-D5b	SCALE :	1:4
	DRAWN BY :	NKT	DATE :	15-Jun-2022
			REVISED :	
<p>Equus Waterproof Membrane Details are specially drawn for use by Local Authorities, Building Contractors, Equus Applicators, Architects and design professionals. All details are drawn to assist in the development of project specific details. Details may be modified where necessary to accommodate job specific requirements but must be approved by Equus Industries Ltd. All components must be supplied by Equus Industries Ltd. Equus reserves the right to alter or upgrade details at any time without prior notice.</p>				
		<p>AUTHORISED DISTRIBUTOR SOPREMA</p>		

- ① Plywood Deck
- ② EQUUS SOPRADERE QUICK primer
- ③ EQUUS SOPRASUN PLUS 3 base sheet
- ④ EQUUS SOPRASUN PLUS MINERAL cap sheet
- ⑤ EQUUS SOPRASUN cap sheet as separate piece
- ⑥ Extra triangular piece of EQUUS SOPRASUN cap sheet to divert water
- ⑦ EQUUS bitumen fillet or approved alternative
- ⑧ Skylight Joinery



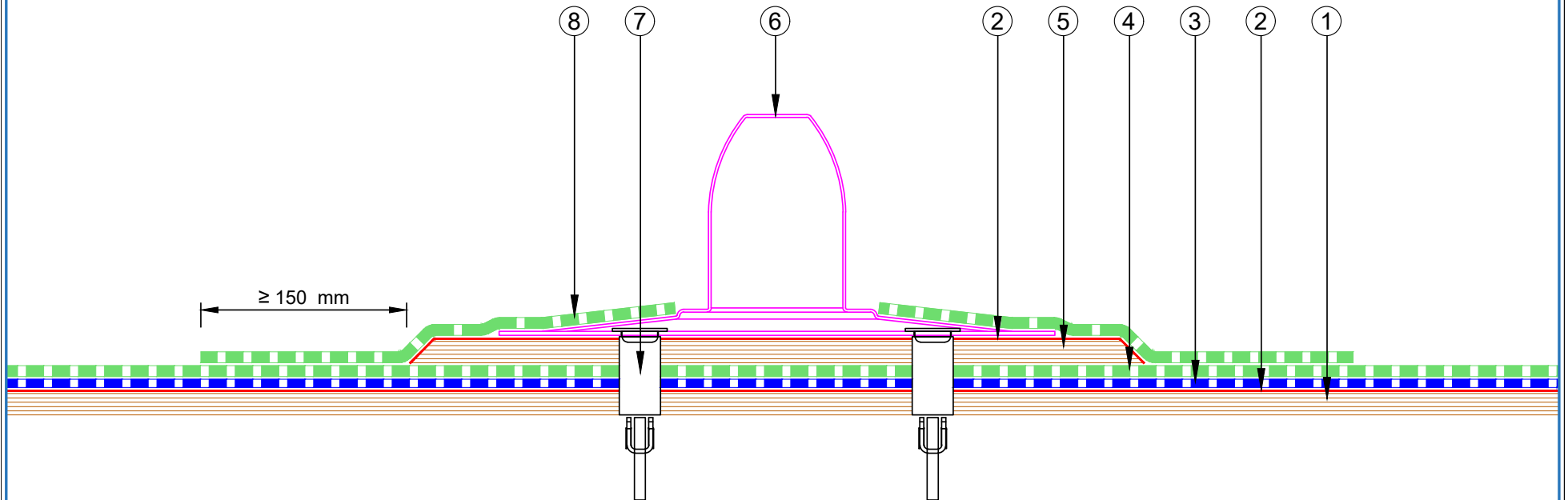
<p>E-mail : admin@equus.co.nz Web : www.equus.co.nz</p>	PROJECT :	Cold Roof on Plywood Standard Detail		
	TITLE :	Skylight/Roof hatch with Extra triangular piece of cap sheet to divert water		
	NUMBER :	SSCRP-D6a	SCALE :	1:4
	DRAWN BY :	NKT	DATE :	15-Jun-2022
			REVISED :	
<p>Equus Waterproof Membrane Details are specially drawn for use by Local Authorities, Building Contractors, Equus Applicators, Architects and design professionals. All details are drawn to assist in the development of project specific details. Details may be modified where necessary to accommodate job specific requirements but must be approved by Equus Industries Ltd. All components must be supplied by Equus Industries Ltd. Equus reserves the right to alter or upgrade details at any time without prior notice.</p>				
		<p>AUTHORISED DISTRIBUTOR SOPREMA</p>		

- ① Plywood Deck
- ② EQUUS SOPRADERE QUICK primer
- ③ EQUUS SOPRASUN PLUS 3 base sheet
- ④ EQUUS SOPRASUN PLUS MINERAL cap sheet
- ⑤ EQUUS SOPRASUN cap sheet as separate piece
- ⑥ Sloped drainage cricket to divert water around skylight
- ⑦ EQUUS bitumen fillet or approved alternative
- ⑧ Skylight Joinery



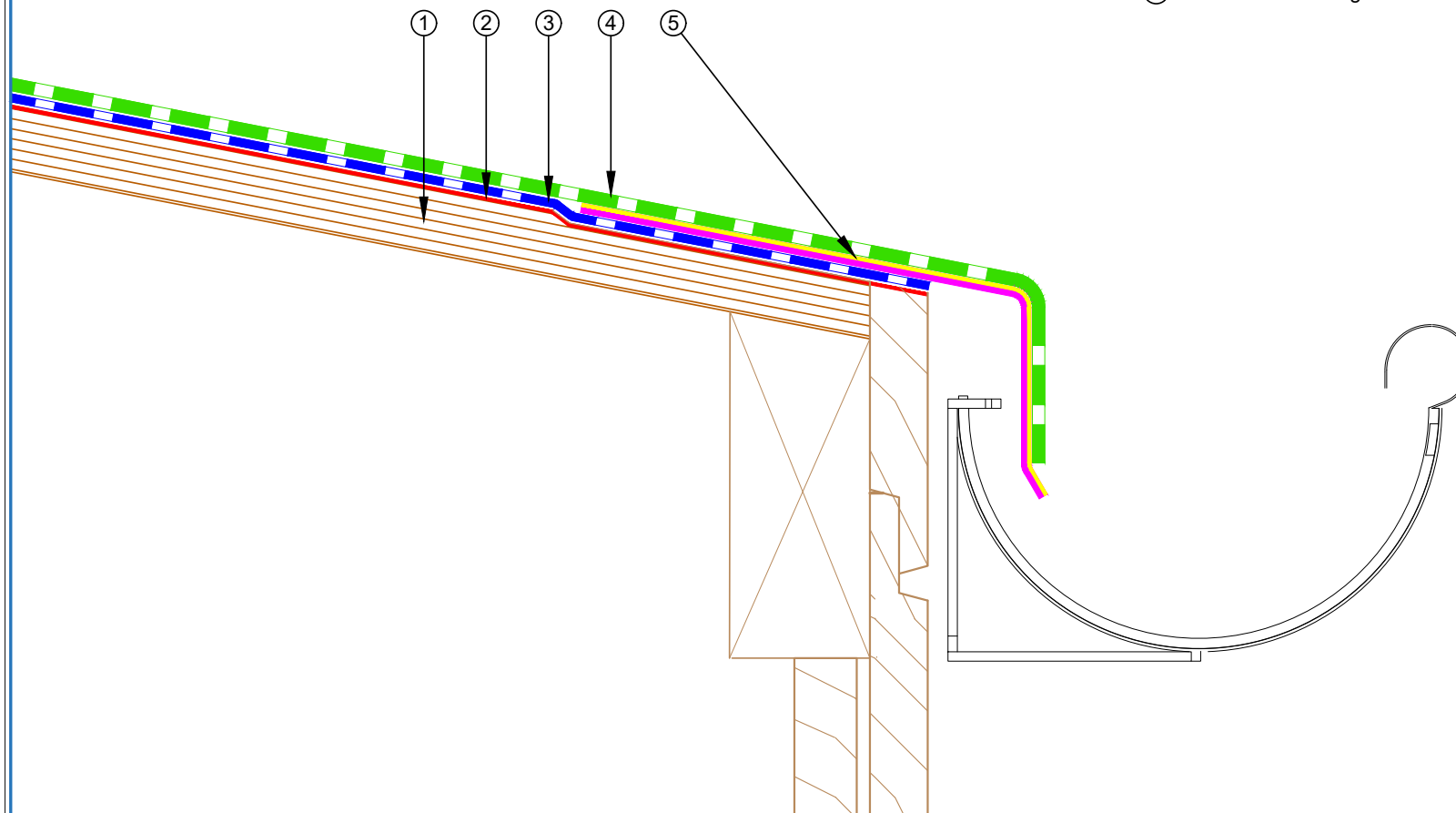
<p>equus E-mail : admin@equus.co.nz Web : www.equus.co.nz</p>	PROJECT :	Cold Roof on Plywood Standard Detail		
	TITLE :	Skylight/Roof hatch with diverter		
	NUMBER :	SSCRP-D6b	SCALE :	1:4
	DRAWN BY :	NKT	DATE :	15-Jun-2022
			REVISED :	
<p>Equus Waterproof Membrane Details are specially drawn for use by Local Authorities, Building Contractors, Equus Applicators, Architects and design professionals. All details are drawn to assist in the development of project specific details. Details may be modified where necessary to accommodate job specific requirements but must be approved by Equus Industries Ltd. All components must be supplied by Equus Industries Ltd. Equus reserves the right to alter or upgrade details at any time without prior notice.</p>				
		<p>AUTHORISED DISTRIBUTOR SOPREMA</p>		

- ① Plywood Deck
- ② EQUUS SOPRADERE QUICK primer
- ③ EQUUS SOPRASUN PLUS 3 base sheet
- ④ EQUUS SOPRASUN PLUS MINERAL cap sheet
- ⑤ 18 mm Plywood plinth under Anchor points
- ⑥ Fall Arrest Anchor
- ⑦ Toggle fixing
- ⑧ EQUUS SOPRASUN Cap Sheet as separate piece over Anchor point



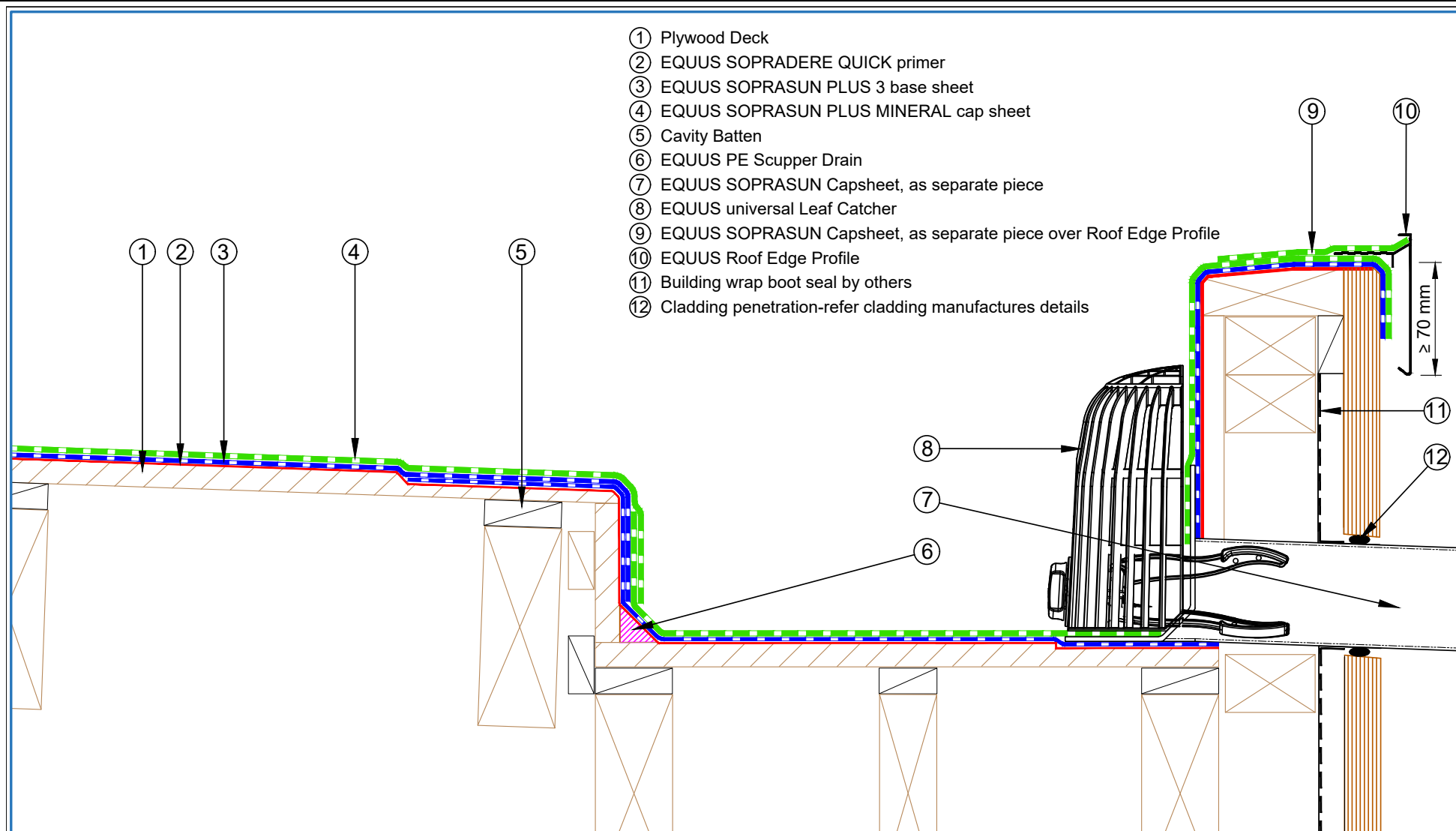
<p>E-mail : admin@equus.co.nz Web : www.equus.co.nz</p>	PROJECT :		Cold Roof on Plywood Standard Detail		<p>AUTHORISED DISTRIBUTOR</p>	
	TITLE :		Fall restraint			
	NUMBER :		SSCRP-D7a	SCALE :		1:4
	DRAWN BY :	NKT	DATE :	15-Jun-2022		REVISED :
	<p>Equus Waterproof Membrane Details are specially drawn for use by Local Authorities, Building Contractors, Equus Applicators, Architects and design professionals. All details are drawn to assist in the development of project specific details. Details may be modified where necessary to accommodate job specific requirements but must be approved by Equus Industries Ltd. All components must be supplied by Equus Industries Ltd. Equus reserves the right to alter or upgrade details at any time without prior notice.</p>					

- ① Plywood Deck
- ② EQUUS SOPRADERE QUICK primer
- ③ EQUUS SOPRASUN PLUS 3 base sheet
- ④ EQUUS SOPRASUN PLUS MINERAL cap sheet
- ⑤ Aluminium Flashing treated with EQUUS 'Spray & Go' Primer



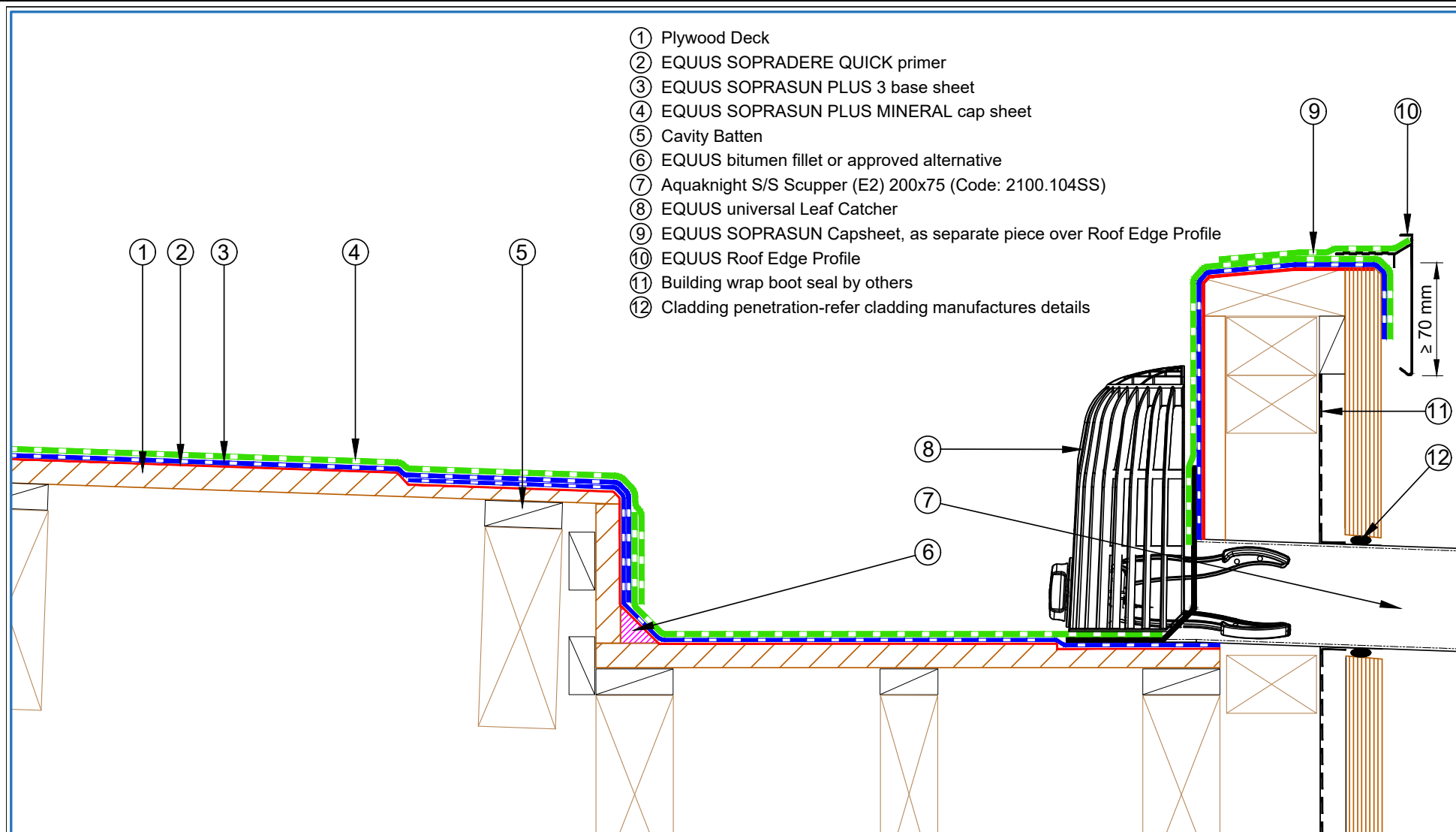
<p>E-mail : admin@equus.co.nz Web : www.equus.co.nz</p>	PROJECT :		Cold Roof on Plywood Standard Detail		
	TITLE :		Connection to external gutter		
	NUMBER :		SSCRP-D8a	SCALE :	1:2
	DRAWN BY :	NKT	DATE :	15-Jun-2022	REVISED :
	<p>Equus Waterproof Membrane Details are specially drawn for use by Local Authorities, Building Contractors, Equus Applicators, Architects and design professionals. All details are drawn to assist in the development of project specific details. Details may be modified where necessary to accommodate job specific requirements but must be approved by Equus Industries Ltd. All components must be supplied by Equus Industries Ltd. Equus reserves the right to alter or upgrade details at any time without prior notice.</p>				



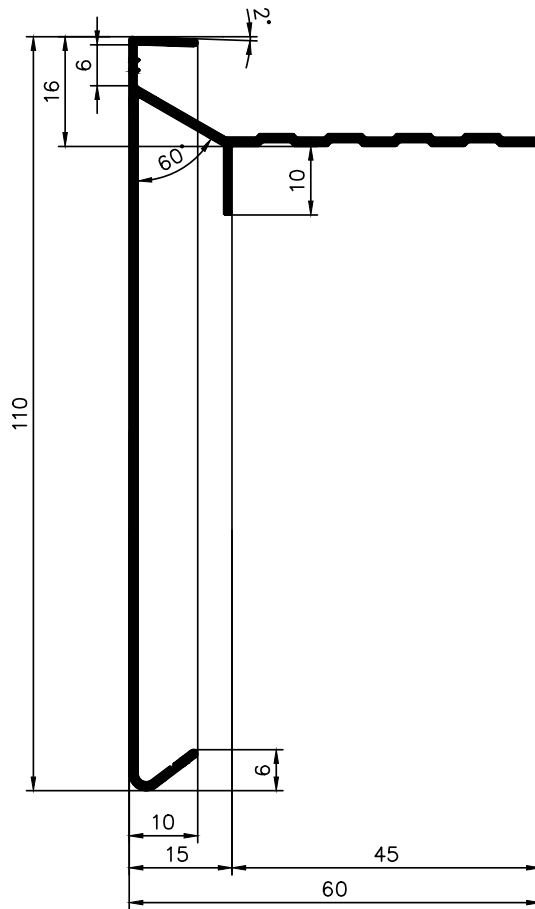


- ① Plywood Deck
- ② EQUUS SOPRADERE QUICK primer
- ③ EQUUS SOPRASUN PLUS 3 base sheet
- ④ EQUUS SOPRASUN PLUS MINERAL cap sheet
- ⑤ Cavity Batten
- ⑥ EQUUS PE Scupper Drain
- ⑦ EQUUS SOPRASUN Capsheet, as separate piece
- ⑧ EQUUS universal Leaf Catcher
- ⑨ EQUUS SOPRASUN Capsheet, as separate piece over Roof Edge Profile
- ⑩ EQUUS Roof Edge Profile
- ⑪ Building wrap boot seal by others
- ⑫ Cladding penetration-refer cladding manufactures details

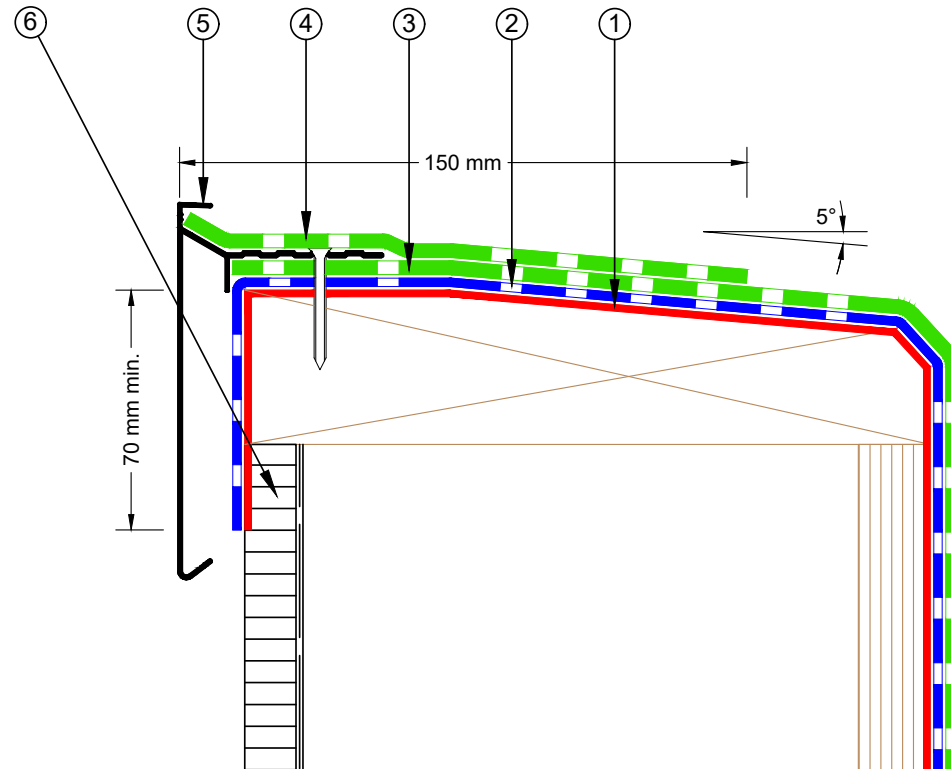
 E-mail : admin@equus.co.nz Web : www.equus.co.nz	PROJECT :		Cold Roof on Plywood Standard Detail	
	TITLE :		Scupper Drain Detail	
	NUMBER :	SSCRP-D9a	SCALE :	1:2
	DRAWN BY :	NKT	DATE :	15-Jun-2022
			REVISED :	
Equus Waterproof Membrane Details are specially drawn for use by Local Authorities, Building Contractors, Equus Applicators, Architects and design professionals. All details are drawn to assist in the development of project specific details. Details may be modified where necessary to accommodate job specific requirements but must be approved by Equus Industries Ltd. All components must be supplied by Equus Industries Ltd. Equus reserves the right to alter or upgrade details at any time without prior notice.				



<p>E-mail : admin@equus.co.nz Web : www.equus.co.nz</p>	PROJECT :		Cold Roof on Plywood Standard Detail	
	TITLE :		Aquaknight S/S Scupper Detail	
	NUMBER :	SSCRP-D9b	SCALE :	1:2
	DRAWN BY :	NKT	DATE :	15-Jun-2022
			REVISED :	
<p>Equus Waterproof Membrane Details are specially drawn for use by Local Authorities, Building Contractors, Equus Applicators, Architects and design professionals. All details are drawn to assist in the development of project specific details. Details may be modified where necessary to accommodate job specific requirements but must be approved by Equus Industries Ltd. All components must be supplied by Equus Industries Ltd. Equus reserves the right to alter or upgrade details at any time without prior notice.</p>				
			<p>AUTHORISED DISTRIBUTOR SOPREMA</p>	

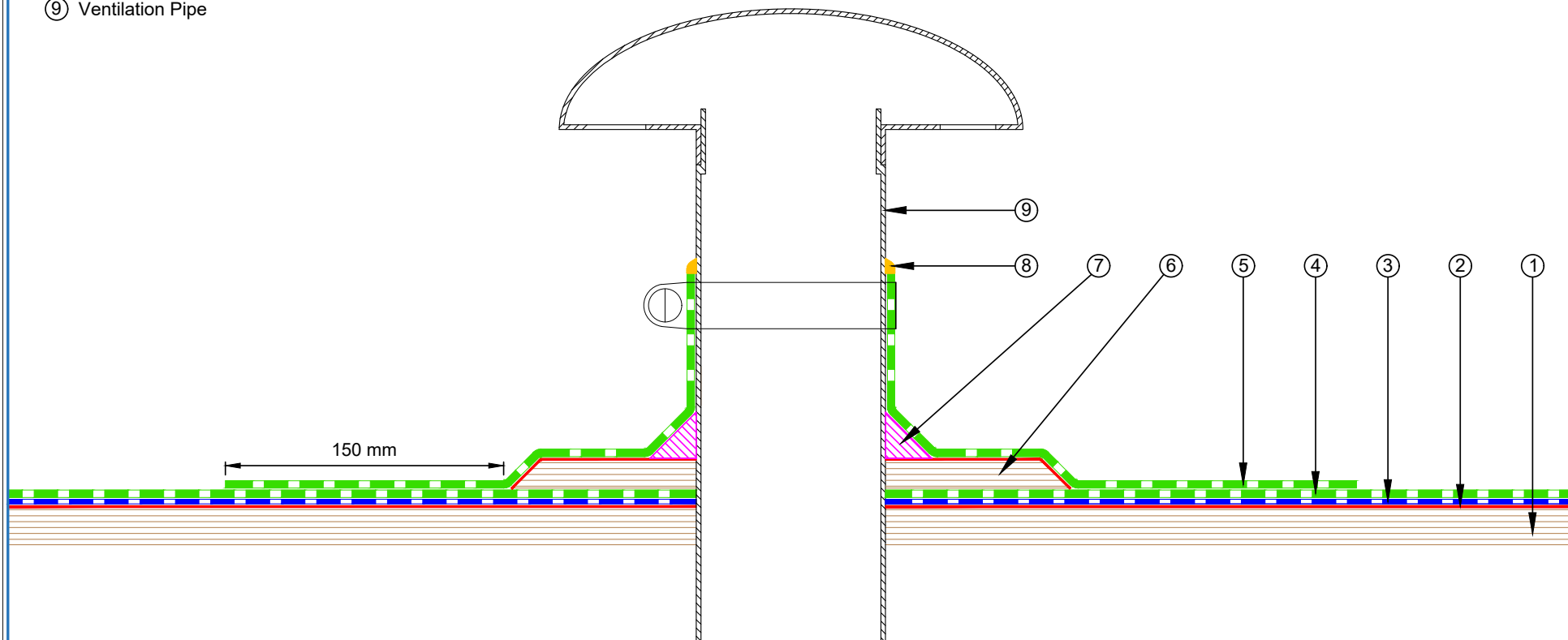


- ① EQUUS SOPRADERE QUICK primer
- ② EQUUS SOPRASUN PLUS 3 base sheet
- ③ EQUUS SOPRASUN PLUS MINERAL cap sheet
- ④ EQUUS SOPRASUN Capsheet as separate piece over Roof edge profile
- ⑤ EQUUS Roof edge profile
- ⑥ Wall cladding and building wrap (by others)



<p>E-mail : admin@equus.co.nz Web : www.equus.co.nz</p>	PROJECT :		Cold Roof on Plywood Standard Detail	
	TITLE :		Upstand detail with roof edge profile	
	NUMBER :	SSCRP-D10a	SCALE :	1:2
	DRAWN BY :	NKT	DATE :	15-Jun-2022
			REVISED :	
<p><small>Equus Waterproof Membrane Details are specially drawn for use by Local Authorities, Building Contractors, Equus Applicators, Architects and design professionals. All details are drawn to assist in the development of project specific details. Details may be modified where necessary to accommodate job specific requirements but must be approved by Equus Industries Ltd. All components must be supplied by Equus Industries Ltd. Equus reserves the right to alter or upgrade details at any time without prior notice.</small></p>				
			<p>AUTHORISED DISTRIBUTOR</p>	

- ① Plywood Deck
- ② EQUUS SOPRADERE QUICK primer
- ③ EQUUS SOPRASUN PLUS 3 base sheet
- ④ EQUUS SOPRASUN PLUS MINERAL cap sheet
- ⑤ EQUUS SOPRASUN Capsheet as separate piece over Plywood Plinth
- ⑥ Plywood Plinth
- ⑦ EQUUS bitumen fillet or approved alternative
- ⑧ EQUUS Alsan Mastic 2200 bitumen sealant
- ⑨ Ventilation Pipe

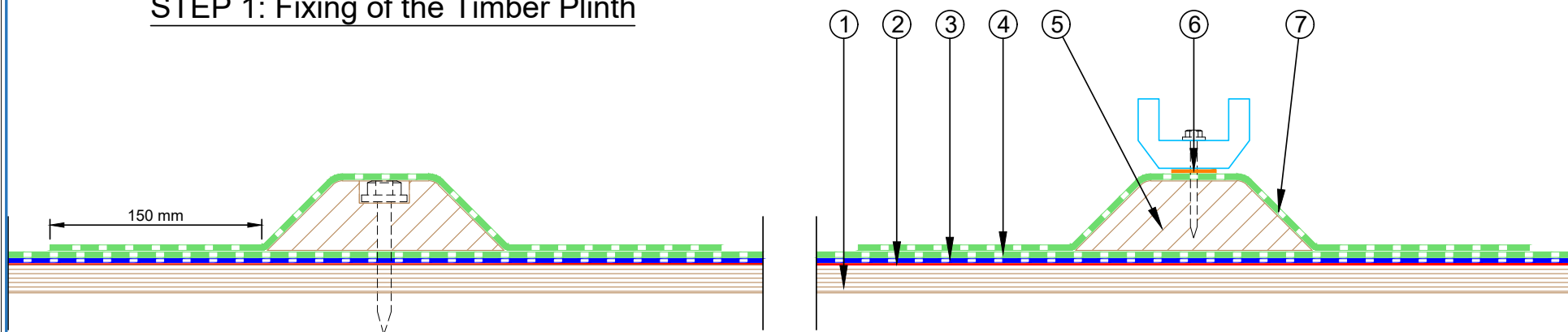


 E-mail : admin@equus.co.nz Web : www.equus.co.nz	PROJECT :		Cold Roof on Plywood Standard Detail		 AUTHORISED DISTRIBUTOR
	TITLE :		Ventilation Pipe with plinth Detail		
	NUMBER :	SSCRP-D11a	SCALE :	1:3	
	DRAWN BY :	NKT	DATE :	15-Jun-2022	
			REVISED :		
<p><small>Equus Waterproof Membrane Details are specially drawn for use by Local Authorities, Building Contractors, Equus Applicators, Architects and design professionals. All details are drawn to assist in the development of project specific details. Details may be modified where necessary to accommodate job specific requirements but must be approved by Equus Industries Ltd. All components must be supplied by Equus Industries Ltd. Equus reserves the right to alter or upgrade details at any time without prior notice.</small></p>					

- ① Plywood Deck
- ② EQUUS SOPRADERE QUICK primer
- ③ EQUUS SOPRASUN PLUS 3 base sheet
- ④ EQUUS SOPRASUN PLUS MINERAL cap sheet
- ⑤ Timber Plinth
- ⑥ Monkey Toe Roof Profile Fixing with Neoprene Washer
- ⑦ EQUUS SOPRASUN Capsheet, as separate piece over Timber Plinth

STEP 2: Fixing of the Monkey Toe Roof Profile

STEP 1: Fixing of the Timber Plinth



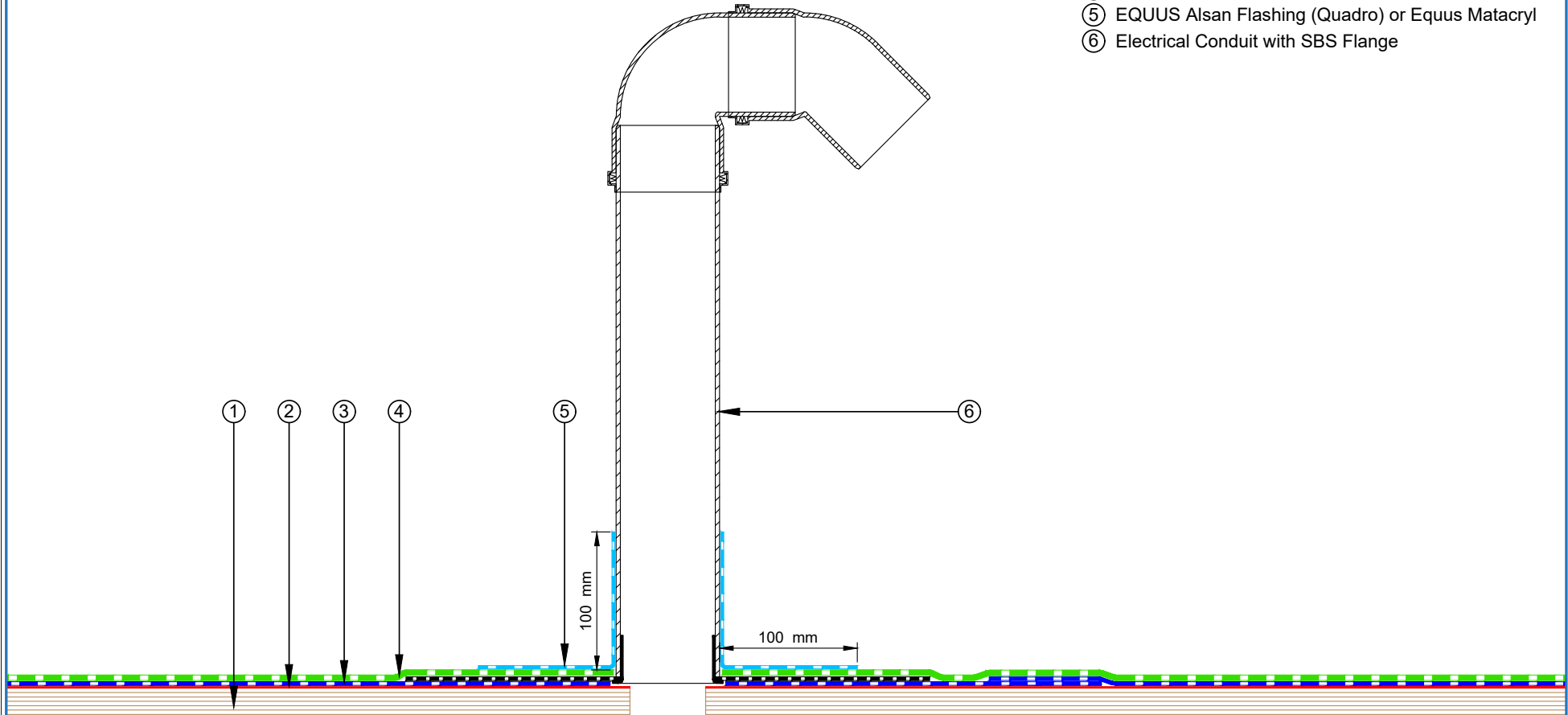
E-mail : admin@equus.co.nz
Web : www.equus.co.nz

PROJECT :	Cold Roof on Plywood Standard Detail		
TITLE :	Monkey Toe Walkway Fixing Detail		
NUMBER :	SSCRP-D12a	SCALE :	1:4
DRAWN BY :	NKT	DATE :	15-Jun-2022
		REVISED :	

Equus Waterproof Membrane Details are specially drawn for use by Local Authorities, Building Contractors, Equus Applicators, Architects and design professionals. All details are drawn to assist in the development of project specific details. Details may be modified where necessary to accommodate job specific requirements but must be approved by Equus Industries Ltd. All components must be supplied by Equus Industries Ltd. Equus reserves the right to alter or upgrade details at any time without prior notice.



- ① Plywood Deck
- ② EQUUS SOPRADERE QUICK primer
- ③ EQUUS SOPRASUN PLUS 3 base sheet
- ④ EQUUS SOPRASUN PLUS MINERAL cap sheet
- ⑤ EQUUS Alsan Flashing (Quadro) or Equus Matacryn
- ⑥ Electrical Conduit with SBS Flange

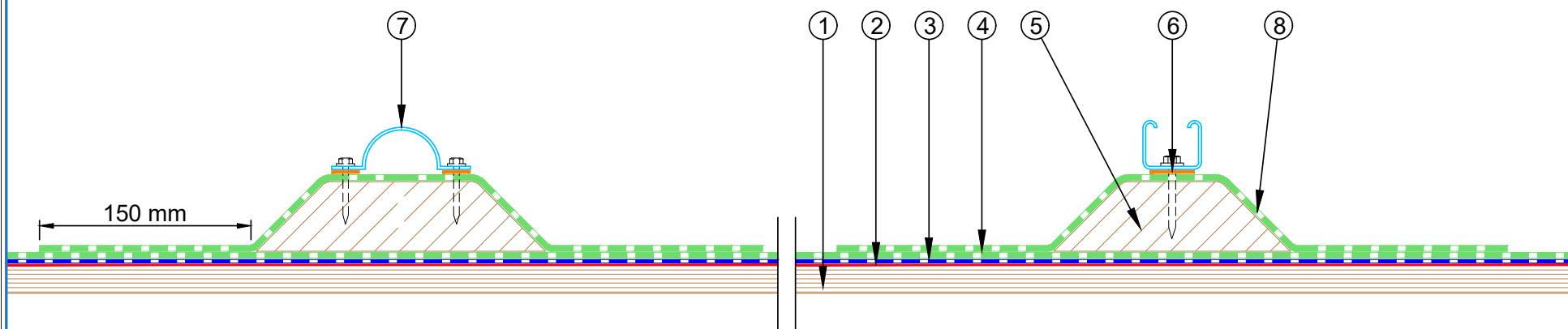


 E-mail : admin@equus.co.nz Web : www.equus.co.nz	PROJECT :		Cold Roof on Plywood Standard Detail		AUTHORISED DISTRIBUTOR SOPREMA
	TITLE :		Electrical Conduit		
	NUMBER :	SSCRP-D13a	SCALE :	1:3	
	DRAWN BY :	NKT	DATE :	15-Jun-2022	
			REVISED :		
Equus Waterproof Membrane Details are specially drawn for use by Local Authorities, Building Contractors, Equus Applicators, Architects and design professionals. All details are drawn to assist in the development of project specific details. Details may be modified where necessary to accommodate job specific requirements but must be approved by Equus Industries Ltd. All components must be supplied by Equus Industries Ltd. Equus reserves the right to alter or upgrade details at any time without prior notice.					

- ① Plywood Deck
- ② EQUUS SOPRADERE QUICK primer
- ③ EQUUS SOPRASUN PLUS 3 base sheet
- ④ EQUUS SOPRASUN PLUS MINERAL cap sheet
- ⑤ Timber Plinth, glued to Capsheet
- ⑥ Clip Ring Fixing with Neoprene Washer into Timber Plinth, but not through Capsheet underneath
- ⑦ Metal Framing Fixing with Neoprene Washer into Timber Plinth, but not through Capsheet underneath
- ⑧ EQUUS SOPRASUN Capsheet, as separate piece over Timber Plinth

A. Clip Ring

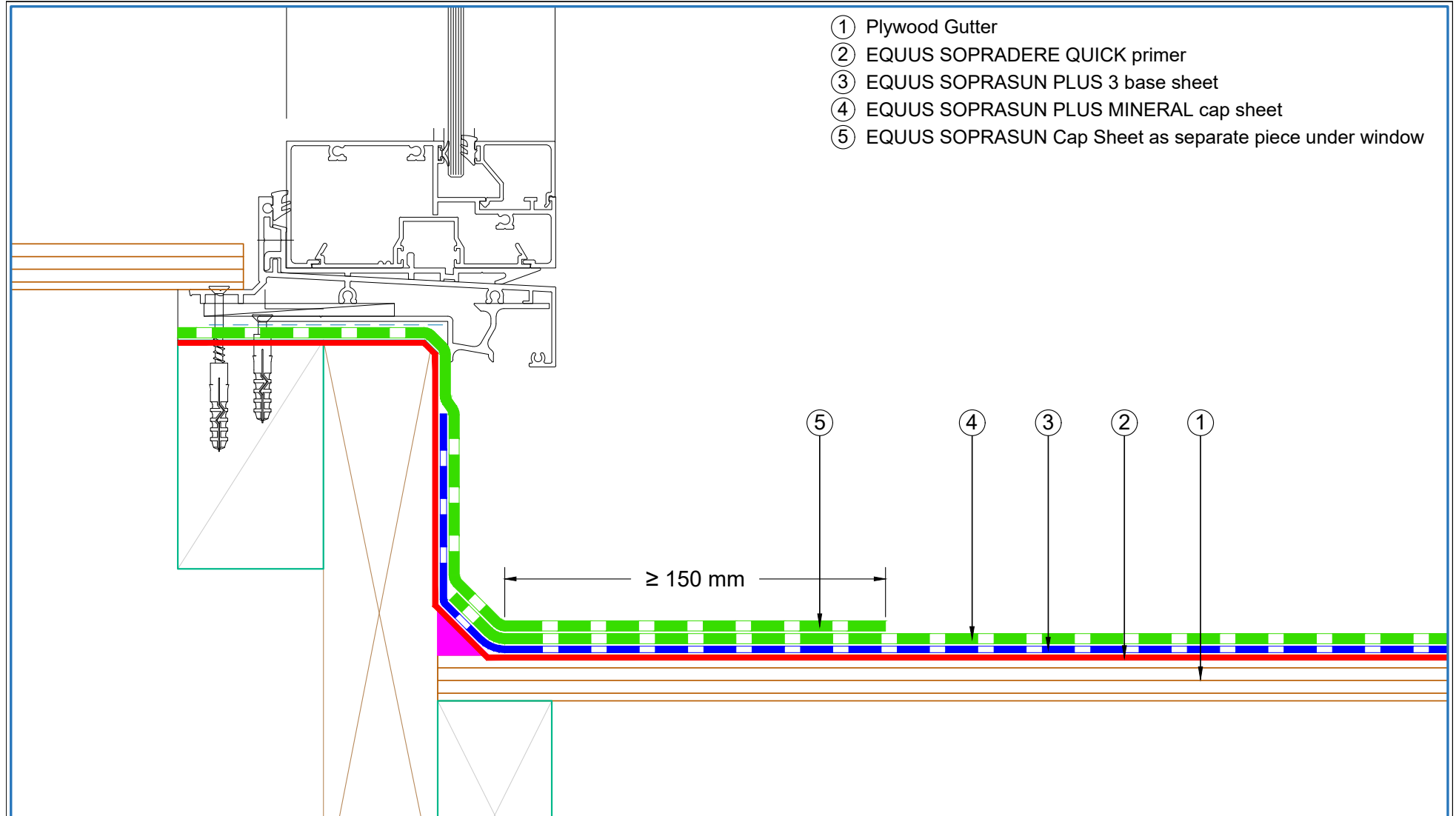
B. Metal Framing



equus
E-mail : admin@equus.co.nz
Web : www.equus.co.nz

PROJECT :	Cold Roof on Plywood Standard Detail			
TITLE :	Cable Tray Support Fixing Detail			
NUMBER :	SSCRP-D14a	SCALE :	1:3	
DRAWN BY :	NKT	DATE :	15-Jun-2022	REVISED :
<p><small>Equus Waterproof Membrane Details are specially drawn for use by Local Authorities, Building Contractors, Equus Applicators, Architects and design professionals. All details are drawn to assist in the development of project specific details. Details may be modified where necessary to accommodate job specific requirements but must be approved by Equus Industries Ltd. All components must be supplied by Equus Industries Ltd. Equus reserves the right to alter or upgrade details at any time without prior notice.</small></p>				

SOPREMA
AUTHORISED DISTRIBUTOR



- ① Plywood Gutter
- ② EQUUS SOPRADERE QUICK primer
- ③ EQUUS SOPRASUN PLUS 3 base sheet
- ④ EQUUS SOPRASUN PLUS MINERAL cap sheet
- ⑤ EQUUS SOPRASUN Cap Sheet as separate piece under window

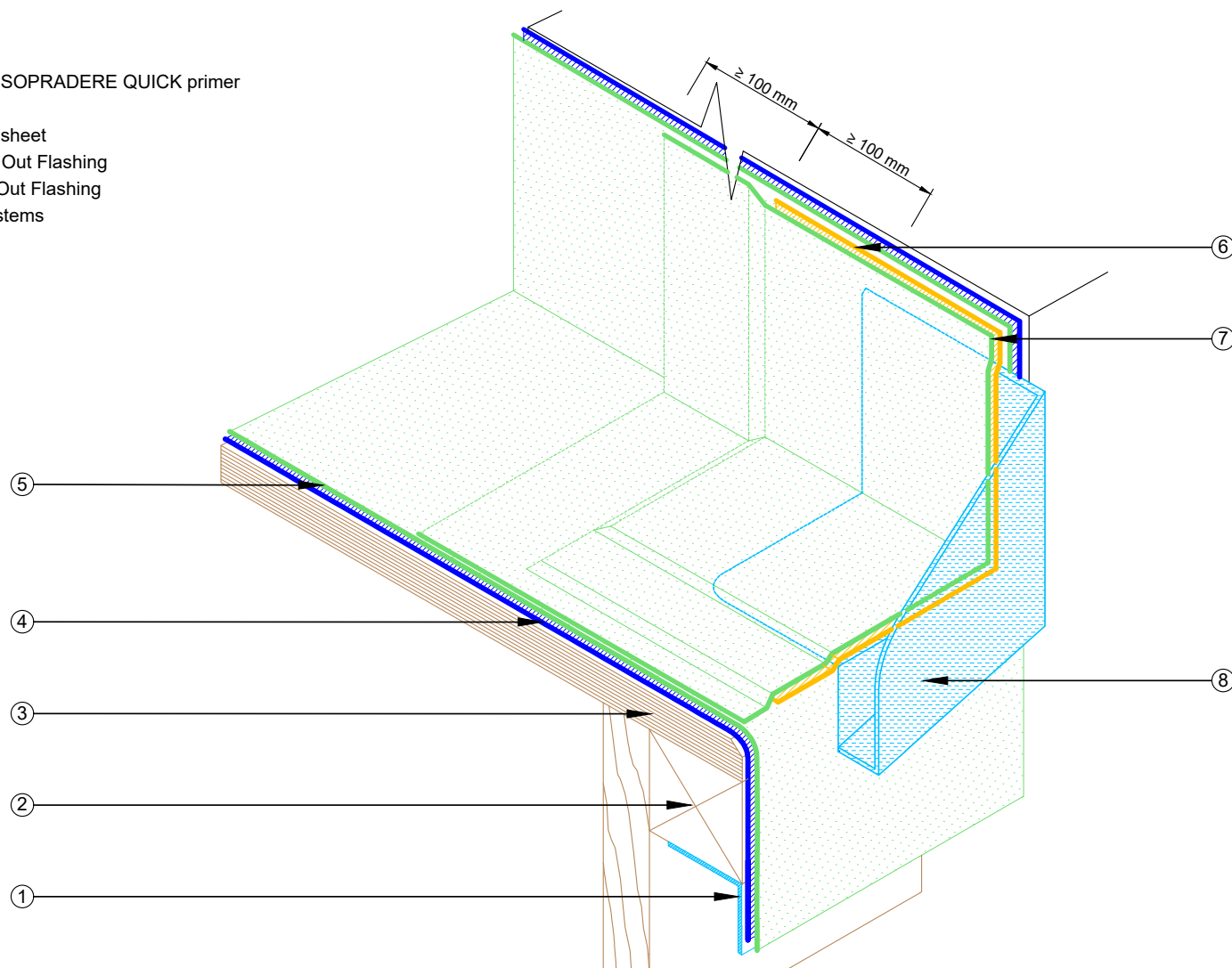
≥ 150 mm

equus
E-mail : admin@equus.co.nz
Web : www.equus.co.nz

PROJECT :	Cold Roof on Plywood Standard Detail		
TITLE :	Window Gutter Detail		
NUMBER :	SSCRP-D15a	SCALE :	1:2
DRAWN BY :	NKT	DATE :	15-Jun-2022
		REVISED :	
<p><small>Equus Waterproof Membrane Details are specially drawn for use by Local Authorities, Building Contractors, Equus Applicators, Architects and design professionals. All details are drawn to assist in the development of project specific details. Details may be modified where necessary to accommodate job specific requirements but must be approved by Equus Industries Ltd. All components must be supplied by Equus Industries Ltd. Equus reserves the right to alter or upgrade details at any time without prior notice.</small></p>			

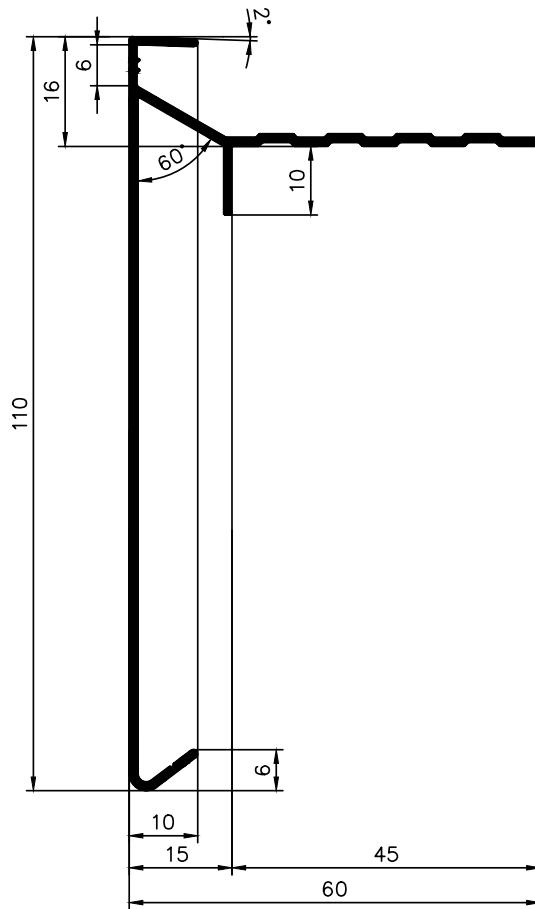
SOPREMA
AUTHORISED DISTRIBUTOR

- ① Aluminium Angle Profile 25 x 25 mm
- ② Primered Timber Blocking
- ③ Primered Plywood Roof Deck with EQUUS SOPRADERE QUICK primer
- ④ EQUUS SOPRASUN PLUS 3 base sheet
- ⑤ EQUUS SOPRASUN PLUS MINERAL cap sheet
- ⑥ EQUUS SOPRASUN base sheet over Kick Out Flashing
- ⑦ EQUUS SOPRASUN Cap sheet over Kick Out Flashing
- ⑧ Kick Out Flashing between double layer systems

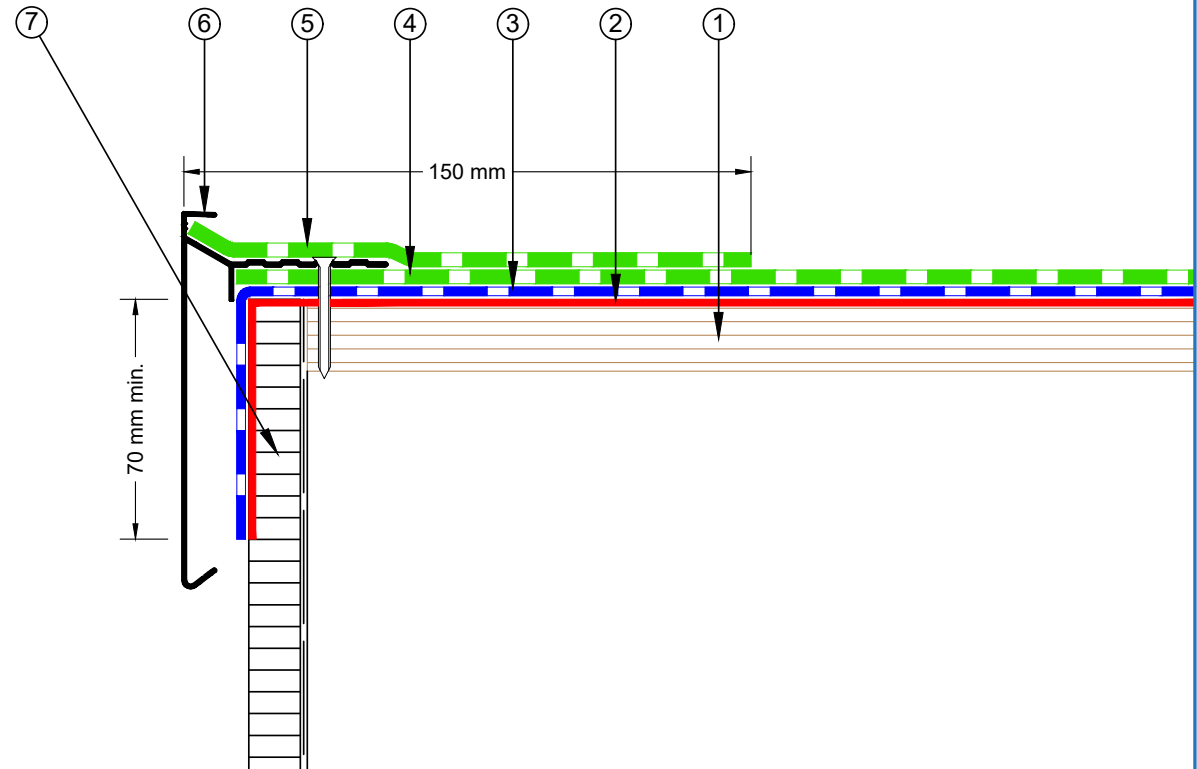


PROJECT :	Cold Roof on Plywood Standard Detail			
TITLE :	Kick Out Flashing Detail			
NUMBER :	SSCRP-D16a	SCALE :	NTS	
DRAWN BY :	NKT	DATE :	15-Jun-2022	REVISED :
<p><small>Equus Waterproof Membrane Details are specially drawn for use by Local Authorities, Building Contractors, Equus Applicators, Architects and design professionals. All details are drawn to assist in the development of project specific details. Details may be modified where necessary to accommodate job specific requirements but must be approved by Equus Industries Ltd. All components must be supplied by Equus Industries Ltd. Equus reserves the right to alter or upgrade details at any time without prior notice.</small></p>				

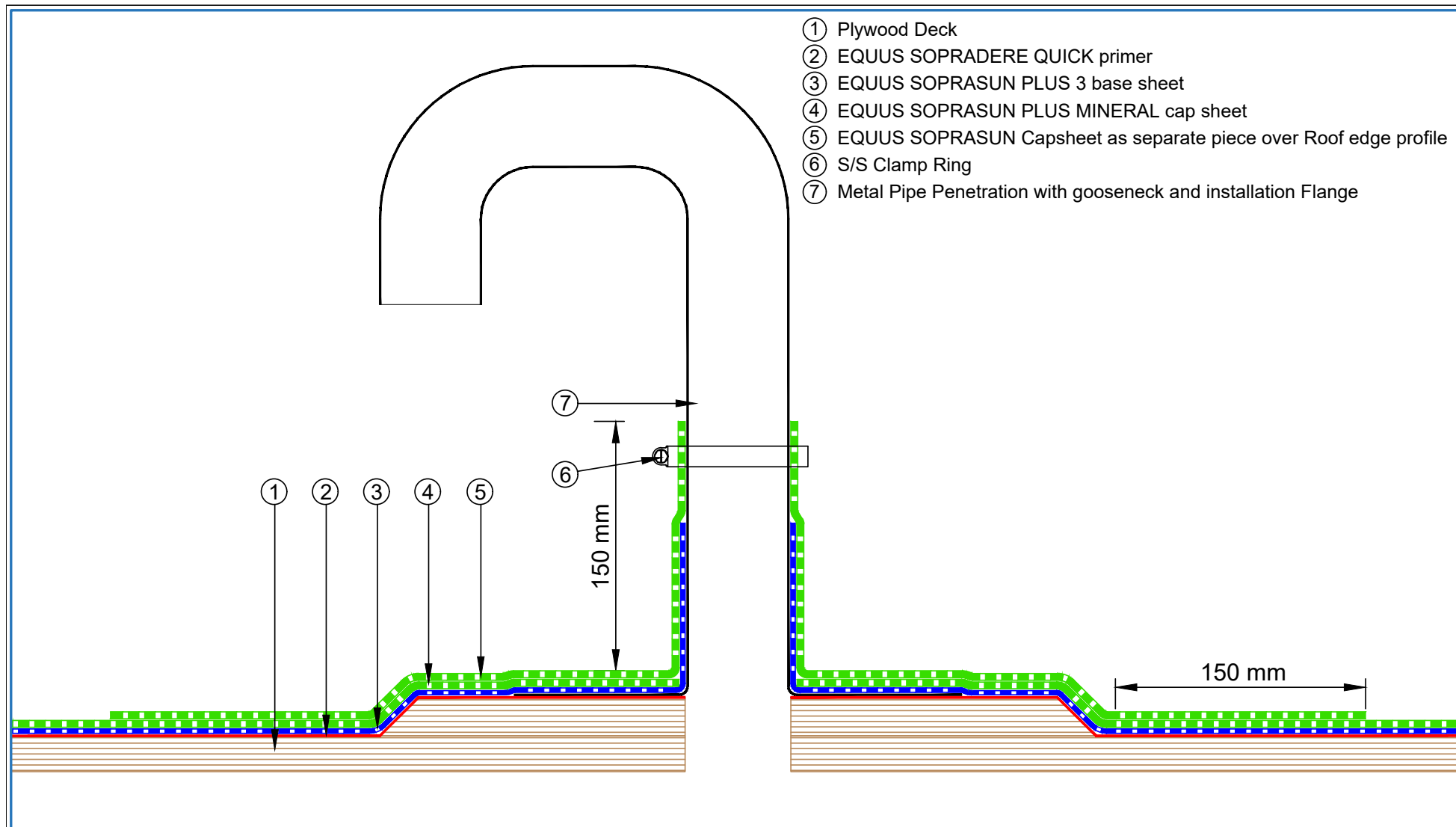




- ① Plywood Deck
- ② EQUUS SOPRADERE QUICK primer
- ③ EQUUS SOPRASUN PLUS 3 base sheet
- ④ EQUUS SOPRASUN PLUS MINERAL cap sheet
- ⑤ EQUUS SOPRASUN Capsheet as separate piece over Roof edge profile
- ⑥ EQUUS SOPREMA Roof edge profile
- ⑦ Wall cladding and building wrap (by others)



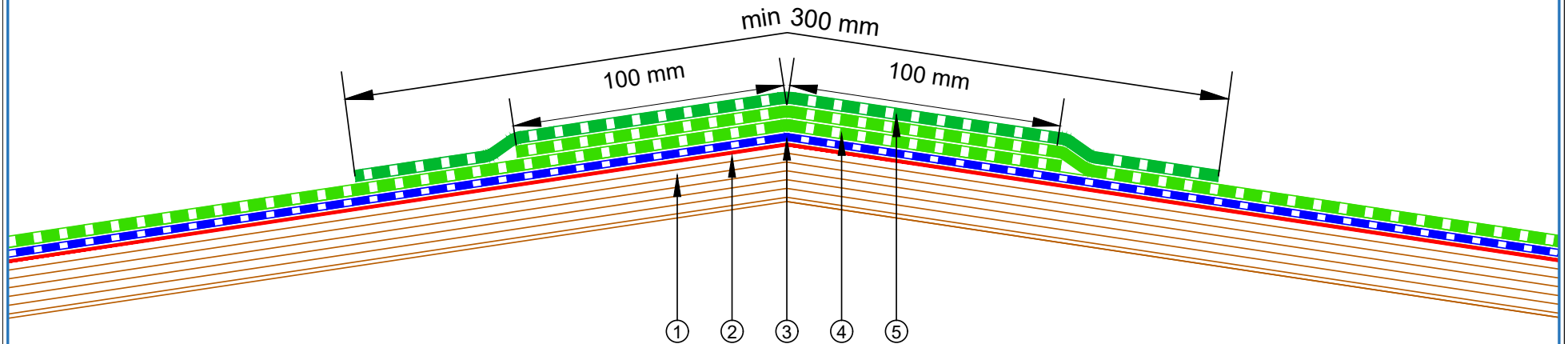
<p>E-mail : admin@equus.co.nz Web : www.equus.co.nz</p>	PROJECT :		Cold Roof on Plywood Standard Detail		<p>AUTHORISED DISTRIBUTOR</p>	
	TITLE :		Verge Detail Without Upstand			
	NUMBER :		SSCRP-D17a	SCALE :		1:2
	DRAWN BY :	NKT	DATE :	15-Jun-2022		REVISED :
	<p>Equus Waterproof Membrane Details are specially drawn for use by Local Authorities, Building Contractors, Equus Applicators, Architects and design professionals. All details are drawn to assist in the development of project specific details. Details may be modified where necessary to accommodate job specific requirements but must be approved by Equus Industries Ltd. All components must be supplied by Equus Industries Ltd. Equus reserves the right to alter or upgrade details at any time without prior notice.</p>					



- ① Plywood Deck
- ② EQUUS SOPRADERE QUICK primer
- ③ EQUUS SOPRASUN PLUS 3 base sheet
- ④ EQUUS SOPRASUN PLUS MINERAL cap sheet
- ⑤ EQUUS SOPRASUN Capsheet as separate piece over Roof edge profile
- ⑥ S/S Clamp Ring
- ⑦ Metal Pipe Penetration with gooseneck and installation Flange

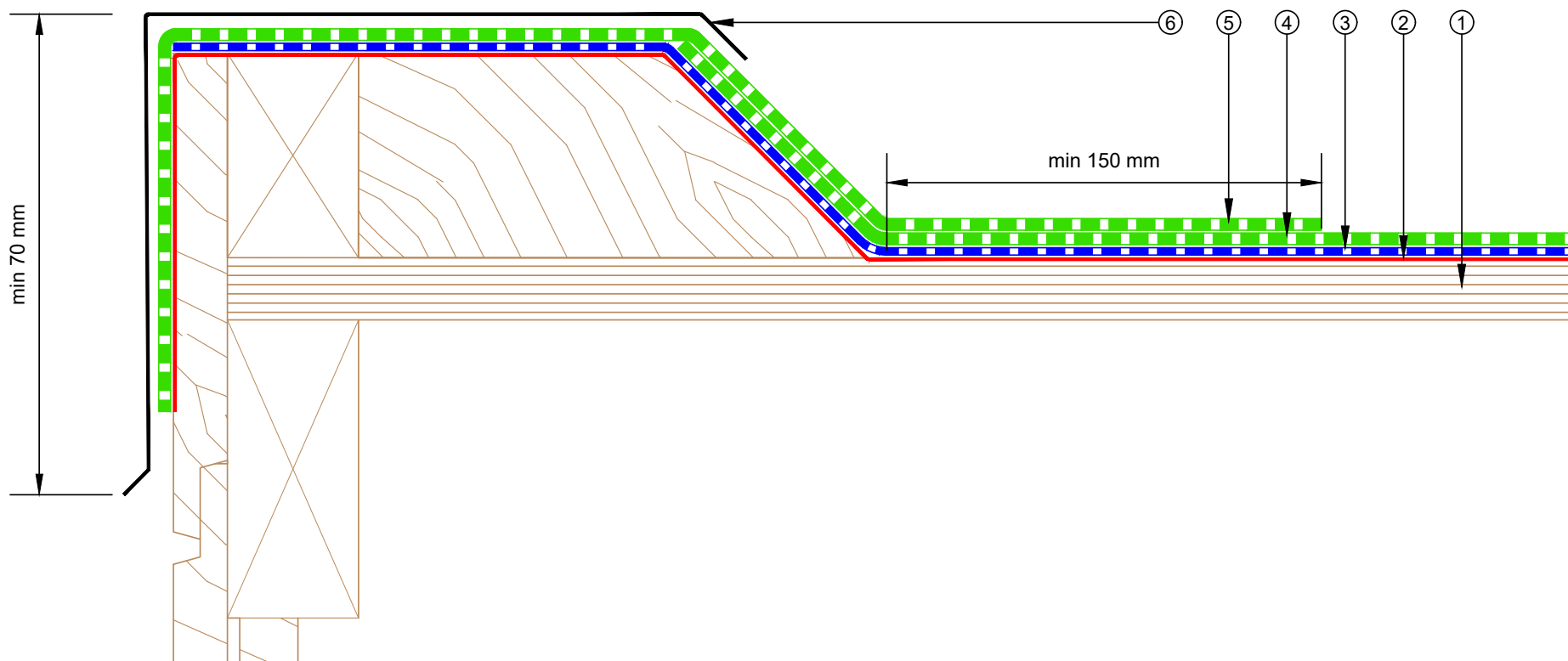
 E-mail : admin@equus.co.nz Web : www.equus.co.nz	PROJECT :		Cold Roof on Plywood Standard Detail		 AUTHORISED DISTRIBUTOR SOPREMA	
	TITLE :		Pipe Penetration Solar PV Power Conduit			
	NUMBER :		SSCRP-D18a	SCALE :		NTS
	DRAWN BY :		NKT	DATE :		15-Jun-2022
				REVISED :		
<p><small>Equus Waterproof Membrane Details are specially drawn for use by Local Authorities, Building Contractors, Equus Applicators, Architects and design professionals. All details are drawn to assist in the development of project specific details. Details may be modified where necessary to accommodate job specific requirements but must be approved by Equus Industries Ltd. All components must be supplied by Equus Industries Ltd. Equus reserves the right to alter or upgrade details at any time without prior notice.</small></p>						

- ① Plywood Deck
- ② EQUUS SOPRADERE QUICK primer
- ③ EQUUS SOPRASUN PLUS 3 base sheet
- ④ EQUUS SOPRASUN PLUS MINERAL cap sheet
- ⑤ Equus SOPRASUN cap sheet, Cover Strip

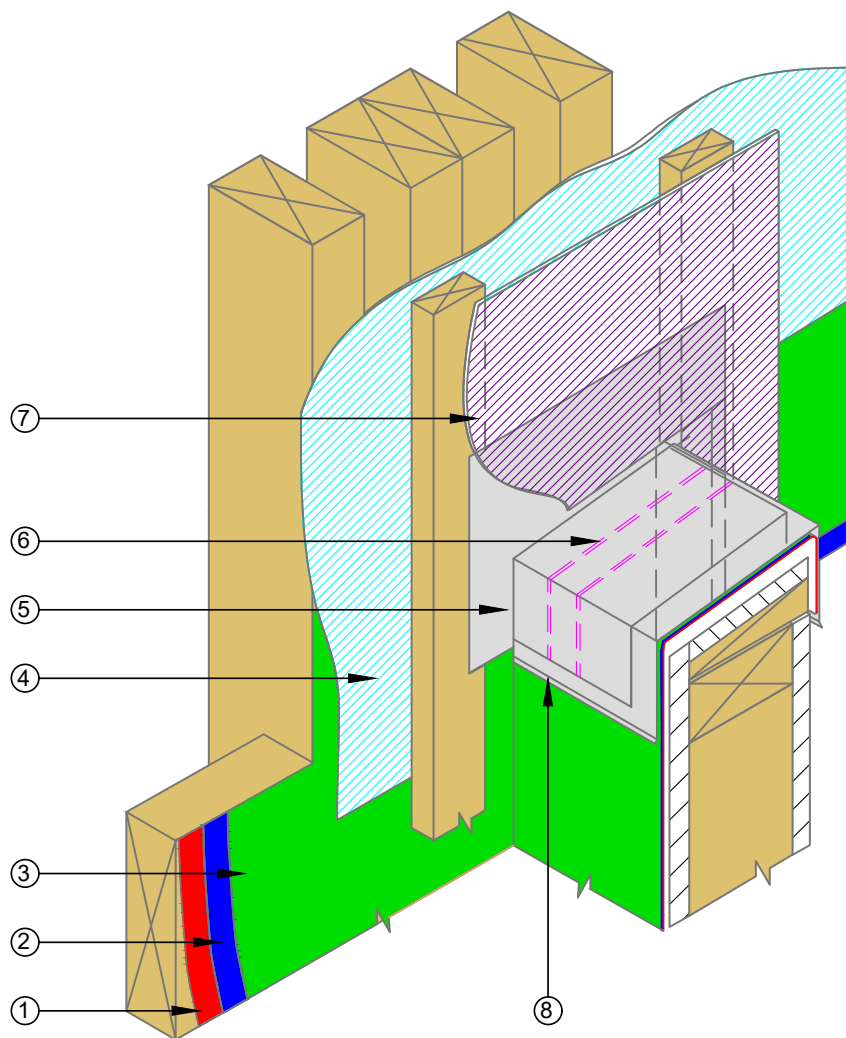


PROJECT :	Cold Roof on Plywood Standard Detail			
TITLE :	Ridge Waterproofing			
NUMBER :	SSCRP-D19a	SCALE :	1:2	
DRAWN BY :	NKT	DATE :	28-Jun-2022	REVISED :
<p>Equus Waterproof Membrane Details are specially drawn for use by Local Authorities, Building Contractors, Equus Applicators, Architects and design professionals. All details are drawn to assist in the development of project specific details. Details may be modified where necessary to accommodate job specific requirements but must be approved by Equus Industries Ltd. All components must be supplied by Equus Industries Ltd. Equus reserves the right to alter or upgrade details at any time without prior notice.</p>				

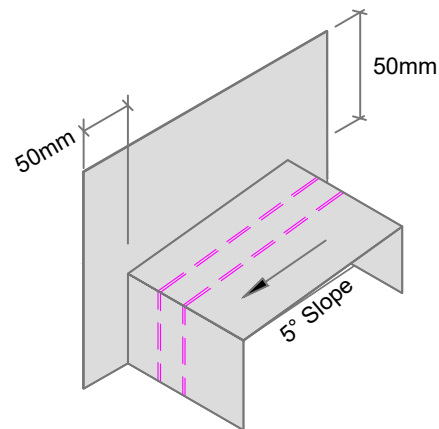
- ① Plywood Deck
- ② EQUUS SOPRADERE QUICK primer
- ③ EQUUS SOPRASUN PLUS 3 base sheet
- ④ EQUUS SOPRASUN PLUS MINERAL cap sheet
- ⑤ SOPREMA SOPRASUN cap sheet as separate piece over plywood plinth
- ⑥ Roof edge flashing (by others)



PROJECT :	Cold Roof on Plywood Standard Detail		
TITLE :	Roof Edge Detail		
NUMBER :	SSCRP-D20a	SCALE :	1:2
DRAWN BY :	NKT	DATE :	28-Jun-2022
		REVISED :	
<p><small>Equus Waterproof Membrane Details are specially drawn for use by Local Authorities, Building Contractors, Equus Applicators, Architects and design professionals. All details are drawn to assist in the development of project specific details. Details may be modified where necessary to accommodate job specific requirements but must be approved by Equus Industries Ltd. All components must be supplied by Equus Industries Ltd. Equus reserves the right to alter or upgrade details at any time without prior notice.</small></p>			



- ① EQUUS SOPRADERE QUICK primer
- ② EQUUS SOPRASUN PLUS 3 base sheet
- ③ EQUUS SOPRASUN PLUS MINERAL cap sheet
- ④ Wall Underlay behind cavity, Finish over waterproofing membrane
- ⑤ Saddle Flashing over cavity batten, directly behind cladding
- ⑥ EQUUS SOPRASEAL Sealant Bead x 2 for Parapet Cap
- ⑦ Cladding to seal to saddle flashing
- ⑧ Metal Cap flashing to seal to saddle flashing



PROJECT :	Cold Roof on Plywood Standard Detail - SOPRASUN		
TITLE :	Saddle Flashing Detail		
NUMBER :	SSCRP-D24a	SCALE :	NTS
DRAWN BY :	NKT	DATE :	27-Feb-2023
REVISD :			
<p><small>Equus Waterproof Membrane Details are specially drawn for use by Local Authorities, Building Contractors, Equus Applicators, Architects and design professionals. All details are drawn to assist in the development of project specific details. Details may be modified where necessary to accommodate job specific requirements but must be approved by Equus Industries Ltd. All components must be supplied by Equus Industries Ltd. Equus reserves the right to alter or upgrade details at any time without prior notice.</small></p>			