

EQUUS SOPREMA NOVATHERM WARM ROOF SYSTEM

Standard Details on Plywood Substrate



CELEBRATING
40 YEARS
1982-2022

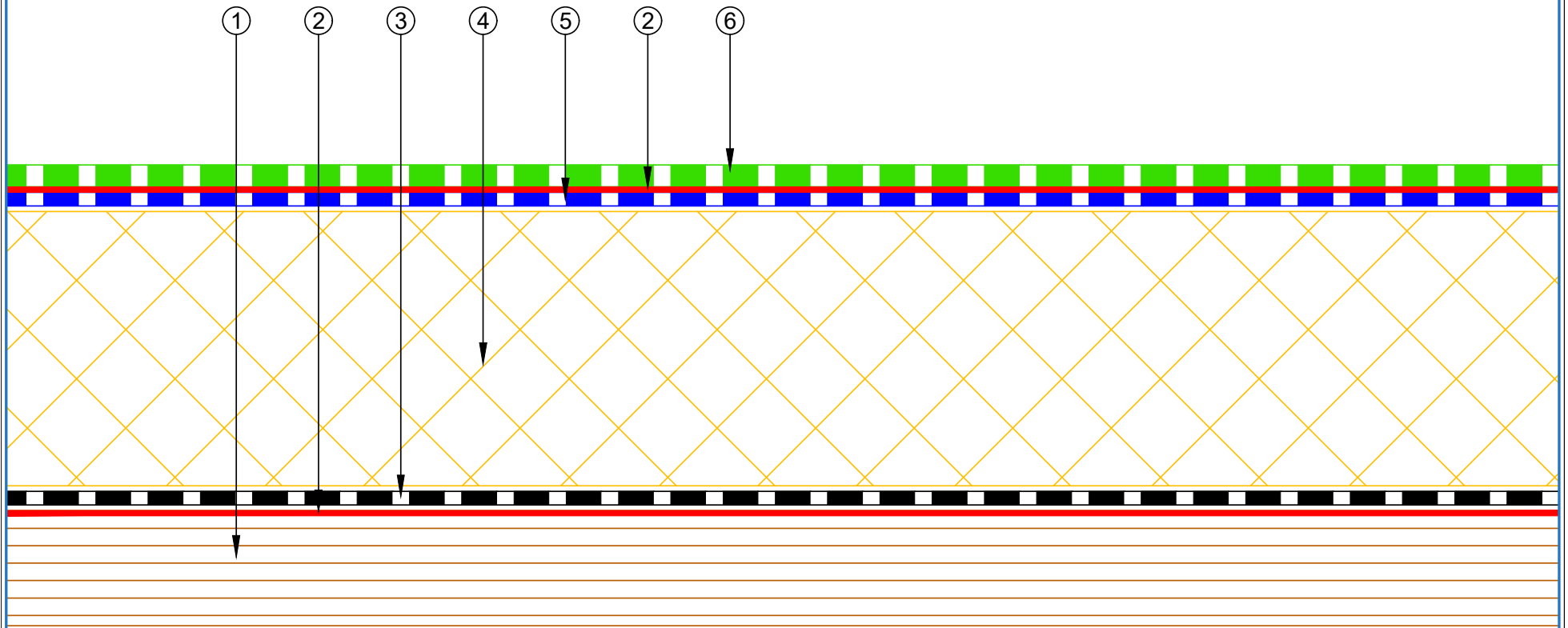


SEPTEMBER 2024

CONTENTS

SNWRPs-D0a	Roof Build Up with PIR	1	SNWRPs-D5c	Standard Pipe or SHS with Roof Board (PIR)	12
SNWRPs-D0b	Roof Build Up with PIR and Roof Board	2	SNWRPs-D5d	Standard Pipe or SHS with Coverboard (Mineral Wool)	13
SNWRPs-D0d	Roof Build Up with Mineral Wool and Roof Board	3	SNWRPs-D6a	Electrical Conduit (PIR)	14
SNWRPs-D1a	Concrete Parapet Detail with Roof Cap	4	SNWRPs-D6c	Electrical Conduit with Roof Board (Mineral Wool)	15
SNWRPs-D1b	Concrete Parapet with Roof Edge (PIR)	5	SNWRPs-D6d	Electrical Conduit with Roof Board (PIR)	16
SNWRPs-D2a	Plywood Parapet with Roof Cap Flashing (PIR)	6	SNWRPs-D7a	Roof Equipment Support (PIR)	17
SNWRPs-D2b	Plywood Parapet with Roof Edge (PIR)	7	SNWRPs-D7c	Roof Equipment Support – Optional (PIR)	18
SNWRPs-D3a	Allproof Dome Clamp Ring Drain	8	SNWRPs-D8a	Skylight (PIR)	19
SNWRPs-D3b	Aquaknight HiFlow Roof Drain	9	SNWRPs-D9a	Fall Restraint (PIR)	20
SNWRPs-D3c	Allproof Dome Clamp Ring Drain 168.80DCR	10	SNWRPs-D10a	Connection to External Gutter (PIR)	21
SNWRPs-D5a	Standard Pipe or SHS penetration (PIR)	11	SNWRPs-D11a	Roof Build Up with SOPRASOLAR	22

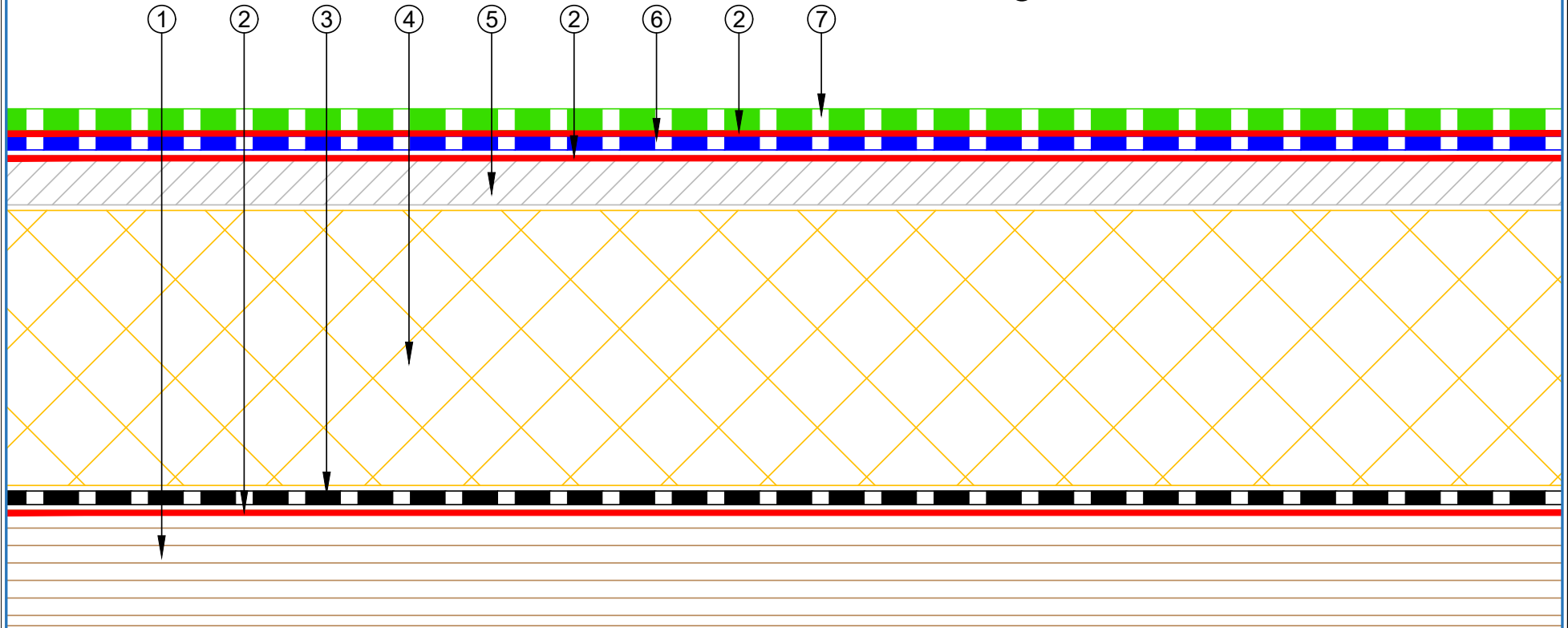
- ① Plywood Deck
- ② EQUUS Peel & Stick primer
- ③ EQUUS Colphene 3000 Vapour Barrier
- ④ EQUUS PIR thermal insulation
- ⑤ EQUUS NOVA-SK base sheet (self-adhered)
- ⑥ EQUUS NOVA-SK MINERAL cap sheet (self-adhered)



PROJECT :	Warm Roof on Plywood Standard Detail - NOVA-SK FLAMELESS SYSTEM		
TITLE :	Roof build up with PIR		
NUMBER :	SNWRPs-D0a	SCALE :	NTS
DRAWN BY :	NKT	DATE :	29-Aug-2024
		REVISED :	
<p><small>Equus Waterproof Membrane Details are specially drawn for use by Local Authorities, Building Contractors, Equus Applicators, Architects and design professionals. All details are drawn to assist in the development of project specific details. Details may be modified where necessary to accommodate job specific requirements but must be approved by Equus Industries Ltd. All components must be supplied by Equus Industries Ltd. Equus reserves the right to alter or upgrade details at any time without prior notice.</small></p>			

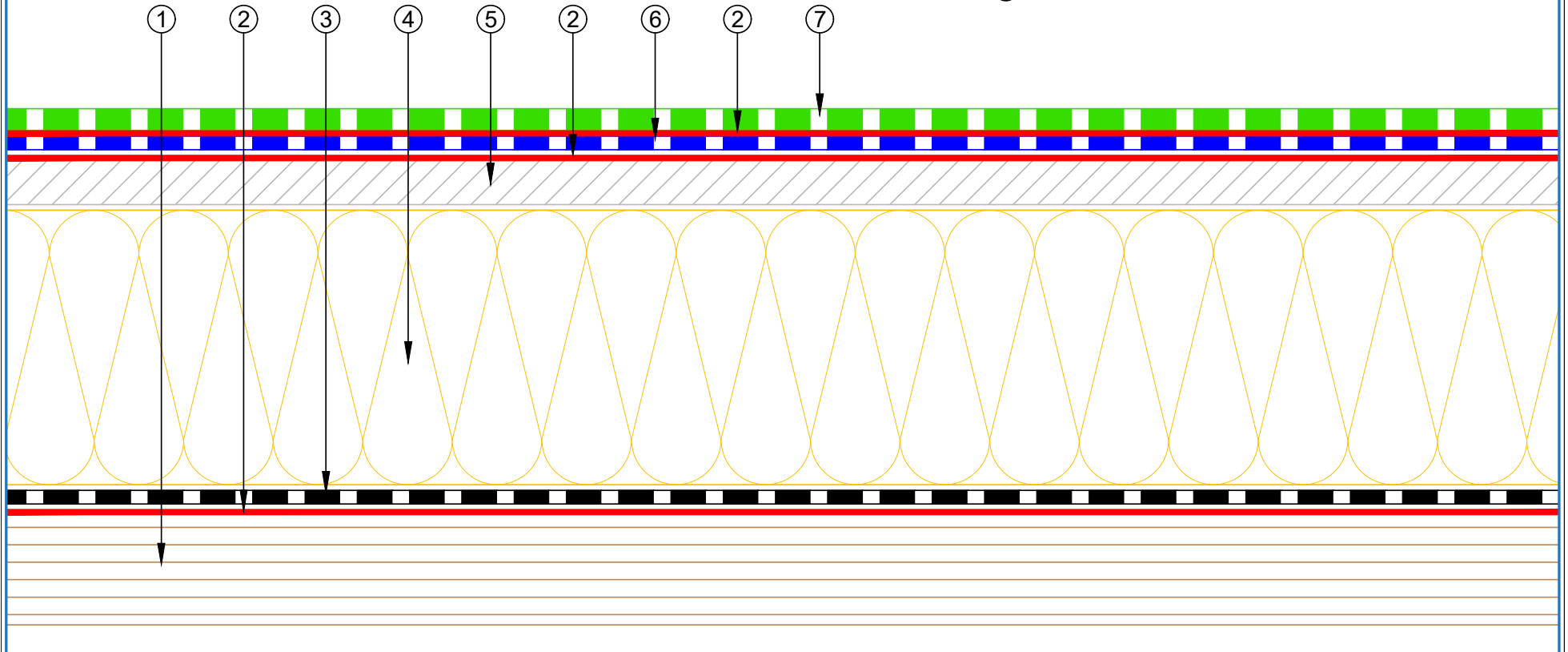


- ① Plywood Deck
- ② EQUUS Peel & Stick primer
- ③ EQUUS Colphene 3000 Vapour Barrier
- ④ EQUUS PIR thermal insulation
- ⑤ EQUUS Permabase Dek roof cover board
- ⑥ EQUUS NOVA-SK base sheet (self-adhered)
- ⑦ EQUUS NOVA-SK MINERAL cap sheet (self-adhered)

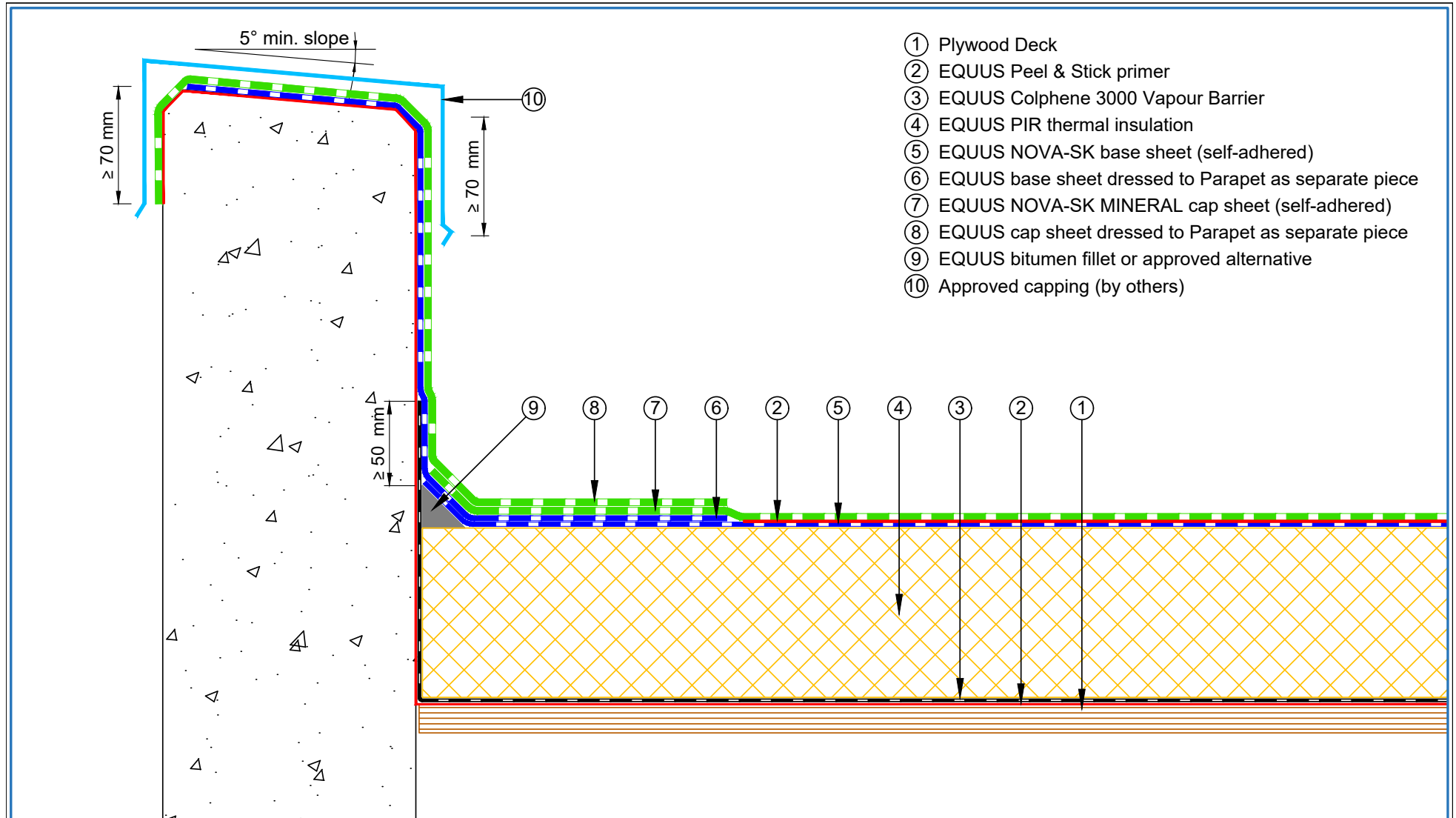


 E-mail : info@equus.nz Web : www.equus.nz	PROJECT :	Warm Roof on Plywood Standard Detail - NOVA-SK FLAMELESS SYSTEM		
	TITLE :	Roof build up with PIR and roof board		
	NUMBER :	SNWRPs-D0b	SCALE :	NTS
	DRAWN BY :	NKT	DATE :	29-Aug-2024
			REVISED :	
Equus Waterproof Membrane Details are specially drawn for use by Local Authorities, Building Contractors, Equus Applicators, Architects and design professionals. All details are drawn to assist in the development of project specific details. Details may be modified where necessary to accommodate job specific requirements but must be approved by Equus Industries Ltd. All components must be supplied by Equus Industries Ltd. Equus reserves the right to alter or upgrade details at any time without prior notice.				
		AUTHORIZED DISTRIBUTOR SOPREMA		

- ① Plywood Deck
- ② EQUUS Peel & Stick primer
- ③ EQUUS Colphene 3000 Vapour Barrier
- ④ EQUUS SOPRAROCK mineral wool thermal insulation
- ⑤ EQUUS Permabase Dek roof cover board
- ⑥ EQUUS NOVA-SK base sheet (self-adhered)
- ⑦ EQUUS NOVA-SK MINERAL cap sheet (self-adhered)



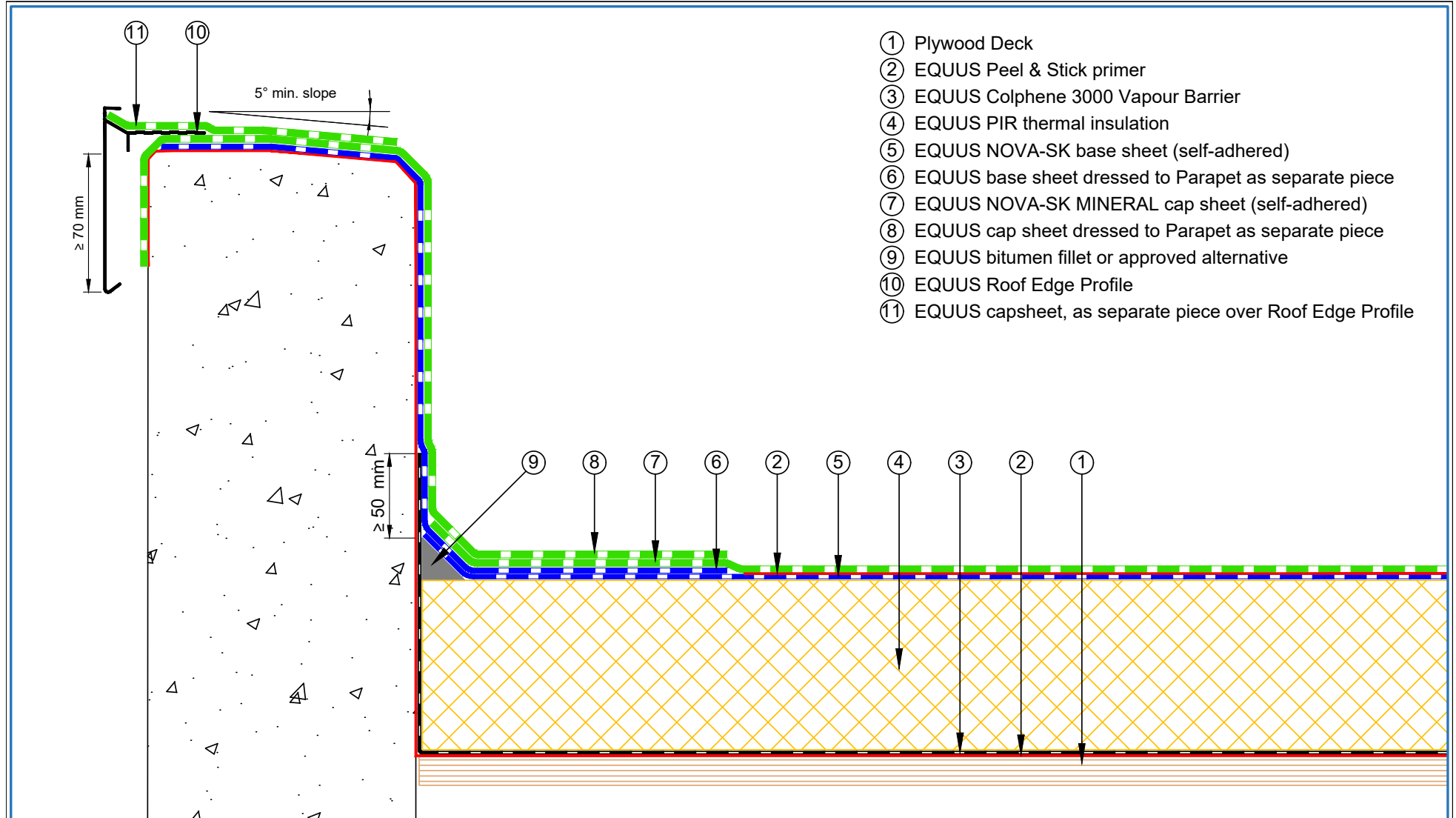
 E-mail : info@equus.nz Web : www.equus.nz	PROJECT :		Warm Roof on Plywood Standard Detail - NOVA-SK FLAMELESS SYSTEM	
	TITLE :		Roof build up with Mineral wool insulation and Roof board	
	NUMBER :	SNWRPs-D0d	SCALE :	NTS
	DRAWN BY :	NKT	DATE :	29-Aug-2024
	REVISD :			
<p><small>Equus Waterproof Membrane Details are specially drawn for use by Local Authorities, Building Contractors, Equus Applicators, Architects and design professionals. All details are drawn to assist in the development of project specific details. Details may be modified where necessary to accommodate job specific requirements but must be approved by Equus Industries Ltd. All components must be supplied by Equus Industries Ltd. Equus reserves the right to alter or upgrade details at any time without prior notice.</small></p>				



- ① Plywood Deck
- ② EQUUS Peel & Stick primer
- ③ EQUUS Colphene 3000 Vapour Barrier
- ④ EQUUS PIR thermal insulation
- ⑤ EQUUS NOVA-SK base sheet (self-adhered)
- ⑥ EQUUS base sheet dressed to Parapet as separate piece
- ⑦ EQUUS NOVA-SK MINERAL cap sheet (self-adhered)
- ⑧ EQUUS cap sheet dressed to Parapet as separate piece
- ⑨ EQUUS bitumen fillet or approved alternative
- ⑩ Approved capping (by others)

 E-mail : info@equus.nz Web : www.equus.nz	PROJECT :		Warm Roof on Plywood Standard Detail - NOVA-SK FLAMELESS SYSTEM	
	TITLE :		Concrete parapet detail with roof cap flashing (PIR insulation)	
	NUMBER :	SNWRPs-D1a	SCALE :	NTS
	DRAWN BY :	NKT	DATE :	29-Aug-2024
	REVISD :			
Equus Waterproof Membrane Details are specially drawn for use by Local Authorities, Building Contractors, Equus Applicators, Architects and design professionals. All details are drawn to assist in the development of project specific details. Details may be modified where necessary to accommodate job specific requirements but must be approved by Equus Industries Ltd. All components must be supplied by Equus Industries Ltd. Equus reserves the right to alter or upgrade details at any time without prior notice.				





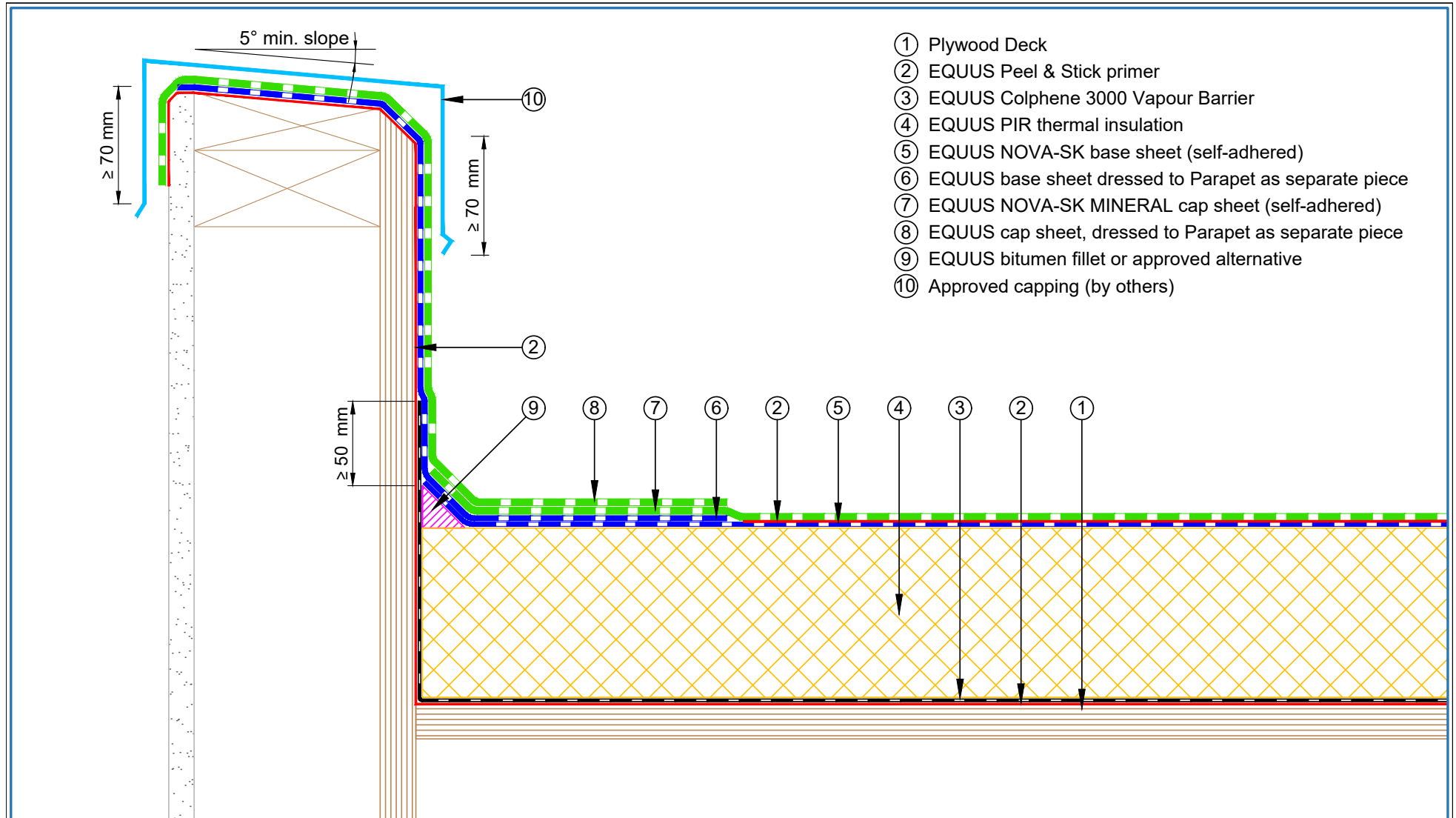
- ① Plywood Deck
- ② EQUUS Peel & Stick primer
- ③ EQUUS Colphene 3000 Vapour Barrier
- ④ EQUUS PIR thermal insulation
- ⑤ EQUUS NOVA-SK base sheet (self-adhered)
- ⑥ EQUUS base sheet dressed to Parapet as separate piece
- ⑦ EQUUS NOVA-SK MINERAL cap sheet (self-adhered)
- ⑧ EQUUS cap sheet dressed to Parapet as separate piece
- ⑨ EQUUS bitumen fillet or approved alternative
- ⑩ EQUUS Roof Edge Profile
- ⑪ EQUUS capsheet, as separate piece over Roof Edge Profile



E-mail : info@equus.nz
Web : www.equus.nz

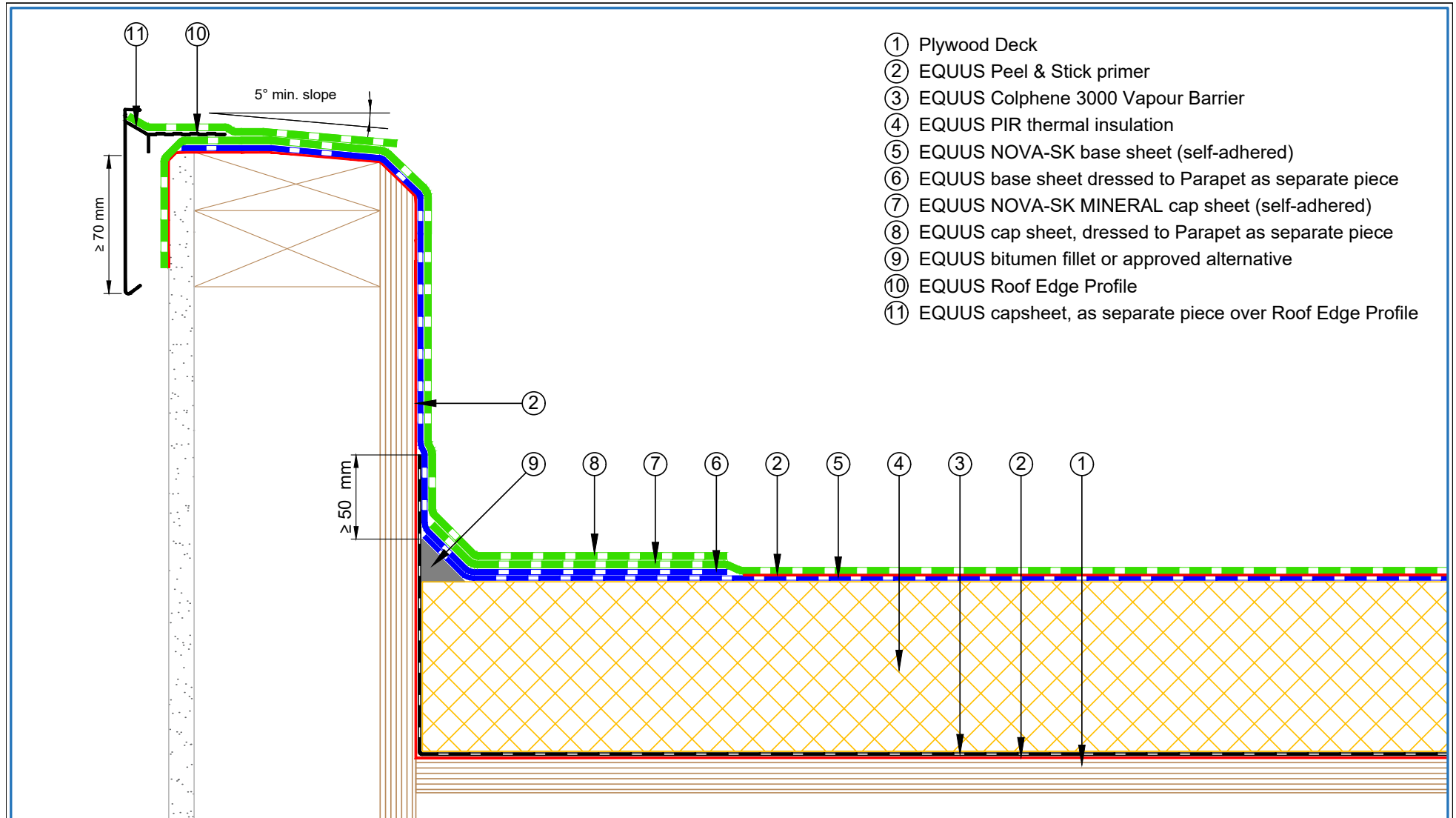
PROJECT :	Warm Roof on Plywood Standard Detail - NOVA-SK FLAMELSS SYSTEM		
TITLE :	Concrete parapet detail with roof edge profile (PIR insulation)		
NUMBER :	SNWRPs-D1b	SCALE :	NTS
DRAWN BY :	NKT	DATE :	29-Aug-2024
		REVISED :	
<p><small>Equus Waterproof Membrane Details are specially drawn for use by Local Authorities, Building Contractors, Equus Applicators, Architects and design professionals. All details are drawn to assist in the development of project specific details. Details may be modified where necessary to accommodate job specific requirements but must be approved by Equus Industries Ltd. All components must be supplied by Equus Industries Ltd. Equus reserves the right to alter or upgrade details at any time without prior notice.</small></p>			





- ① Plywood Deck
- ② EQUUS Peel & Stick primer
- ③ EQUUS Colphene 3000 Vapour Barrier
- ④ EQUUS PIR thermal insulation
- ⑤ EQUUS NOVA-SK base sheet (self-adhered)
- ⑥ EQUUS base sheet dressed to Parapet as separate piece
- ⑦ EQUUS NOVA-SK MINERAL cap sheet (self-adhered)
- ⑧ EQUUS cap sheet, dressed to Parapet as separate piece
- ⑨ EQUUS bitumen fillet or approved alternative
- ⑩ Approved capping (by others)

PROJECT :	Warm Roof on Plywood Standard Detail - NOVA-SK FLAMELSS SYSTEM		
TITLE :	Plywood parapet detail with roof cap flashing (PIR insulation)		
NUMBER :	SNWRPs-D2a	SCALE :	NTS
DRAWN BY :	NKT	DATE :	29-Aug-2024
		REVISED :	
<p><small>Equus Waterproof Membrane Details are specially drawn for use by Local Authorities, Building Contractors, Equus Applicators, Architects and design professionals. All details are drawn to assist in the development of project specific details. Details may be modified where necessary to accommodate job specific requirements but must be approved by Equus Industries Ltd. All components must be supplied by Equus Industries Ltd. Equus reserves the right to alter or upgrade details at any time without prior notice.</small></p>			



- ① Plywood Deck
- ② EQUUS Peel & Stick primer
- ③ EQUUS Colphene 3000 Vapour Barrier
- ④ EQUUS PIR thermal insulation
- ⑤ EQUUS NOVA-SK base sheet (self-adhered)
- ⑥ EQUUS base sheet dressed to Parapet as separate piece
- ⑦ EQUUS NOVA-SK MINERAL cap sheet (self-adhered)
- ⑧ EQUUS cap sheet, dressed to Parapet as separate piece
- ⑨ EQUUS bitumen fillet or approved alternative
- ⑩ EQUUS Roof Edge Profile
- ⑪ EQUUS capsheet, as separate piece over Roof Edge Profile



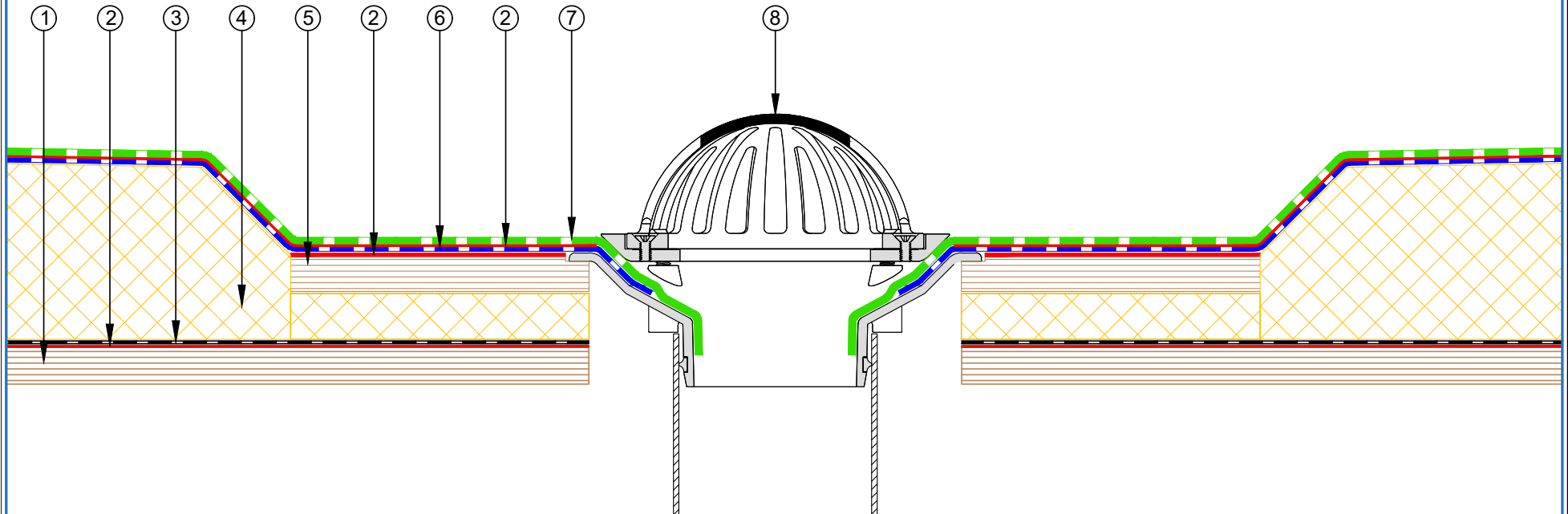
E-mail : info@equus.nz
Web : www.equus.nz

PROJECT :	Warm Roof on Plywood Standard Detail - NOVA-SK FLAMELSS SYSTEM		
TITLE :	Plywood parapet detail with roof edge profile (PIR insulation)		
NUMBER :	SNWRPs-D2b	SCALE :	NTS
DRAWN BY :	NKT	DATE :	29-Aug-2024
		REVISED :	

Equus Waterproof Membrane Details are specially drawn for use by Local Authorities, Building Contractors, Equus Applicators, Architects and design professionals. All details are drawn to assist in the development of project specific details. Details may be modified where necessary to accommodate job specific requirements but must be approved by Equus Industries Ltd. All components must be supplied by Equus Industries Ltd. Equus reserves the right to alter or upgrade details at any time without prior notice.



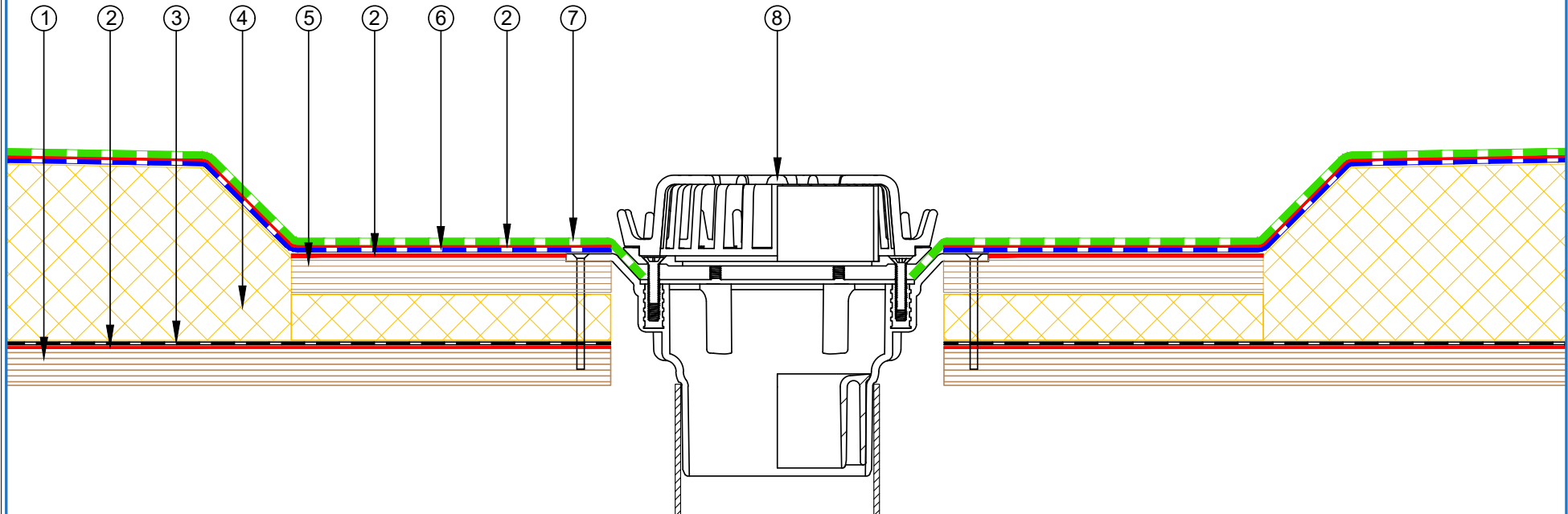
- ① Plywood Deck
- ② EQUUS Peel & Stick primer
- ③ EQUUS Colphene 3000 Vapour Barrier
- ④ EQUUS PIR thermal insulation
- ⑤ Plywood
- ⑥ EQUUS NOVA-SK base sheet (self-adhered)
- ⑦ EQUUS NOVA-SK MINERAL cap sheet (self-adhered)
- ⑧ Allproof dome clamp ring drain



PROJECT :	Warm Roof on Plywood Standard Detail - NOVA-SK FLAMELSS SYSTEM		
TITLE :	Allproof dome clamp ring drain		
NUMBER :	SNWRPs-D3a	SCALE :	NTS
DRAWN BY :	NKT	DATE :	29-Aug-2024
		REVISED :	
<p><small>Equus Waterproof Membrane Details are specially drawn for use by Local Authorities, Building Contractors, Equus Applicators, Architects and design professionals. All details are drawn to assist in the development of project specific details. Details may be modified where necessary to accommodate job specific requirements but must be approved by Equus Industries Ltd. All components must be supplied by Equus Industries Ltd. Equus reserves the right to alter or upgrade details at any time without prior notice.</small></p>			



- ① Plywood Deck
- ② EQUUS Peel & Stick primer
- ③ EQUUS Colphene 3000 Vapour Barrier
- ④ EQUUS PIR thermal insulation
- ⑤ Plywood
- ⑥ EQUUS NOVA-SK base sheet (self-adhered)
- ⑦ EQUUS NOVA-SK MINERAL cap sheet (self-adhered)
- ⑧ Aquaknight HiFlow roof drain



E-mail : info@equus.nz
Web : www.equus.nz

PROJECT : Warm Roof on Plywood Standard Detail - NOVA-SK FLAMELESS SYSTEM

TITLE : Aquaknight HiFlow roof drain

NUMBER : SNWRPs-D3b

SCALE : NTS

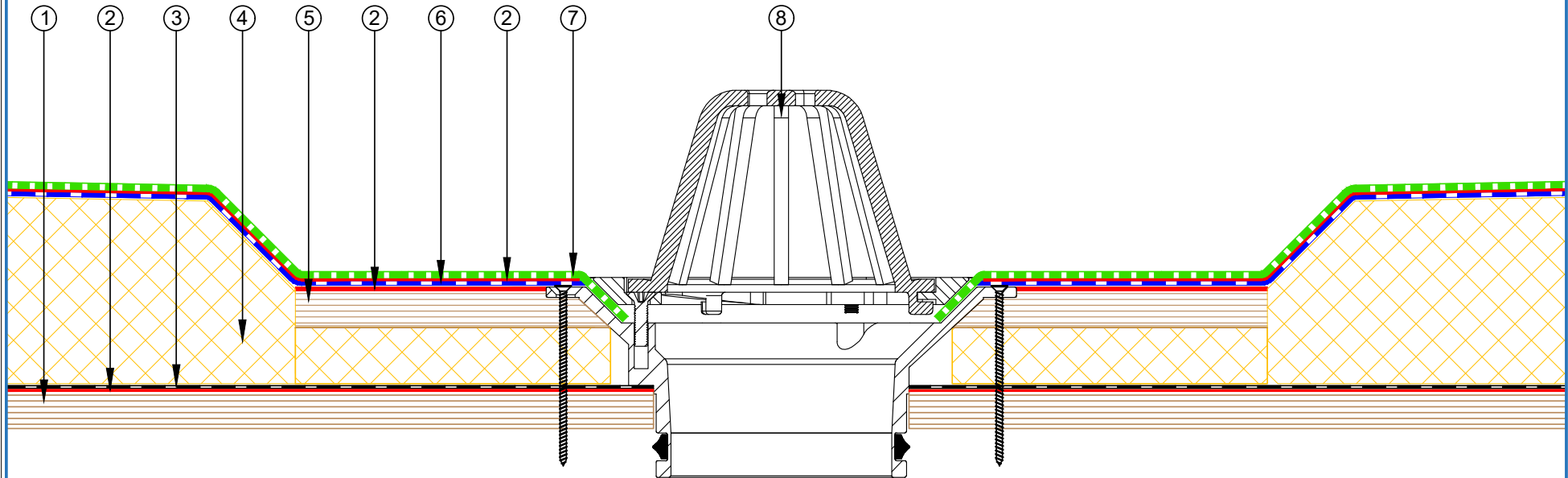
DRAWN BY : NKT DATE : 29-Aug-2024

REVISED :

Equus Waterproof Membrane Details are specially drawn for use by Local Authorities, Building Contractors, Equus Applicators, Architects and design professionals. All details are drawn to assist in the development of project specific details. Details may be modified where necessary to accommodate job specific requirements but must be approved by Equus Industries Ltd. All components must be supplied by Equus Industries Ltd. Equus reserves the right to alter or upgrade details at any time without prior notice.



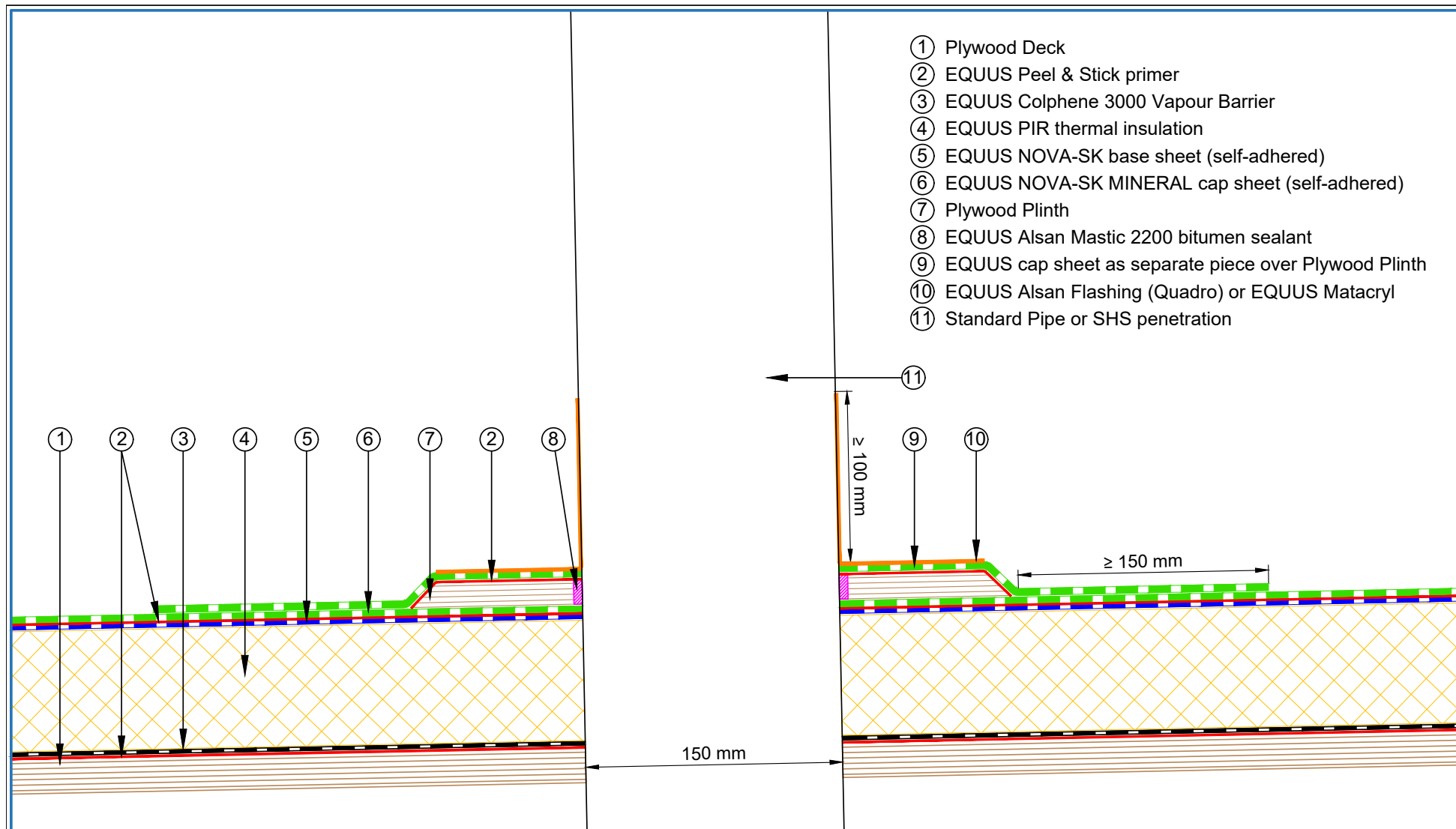
- ① Plywood Deck
- ② EQUUS Peel & Stick primer
- ③ EQUUS Colphene 3000 Vapour Barrier
- ④ EQUUS PIR thermal insulation
- ⑤ Plywood
- ⑥ EQUUS NOVA-SK base sheet (self-adhered)
- ⑦ EQUUS NOVA-SK MINERAL cap sheet (self-adhered)
- ⑧ Allproof dome clamp ring drain 168.80DCR





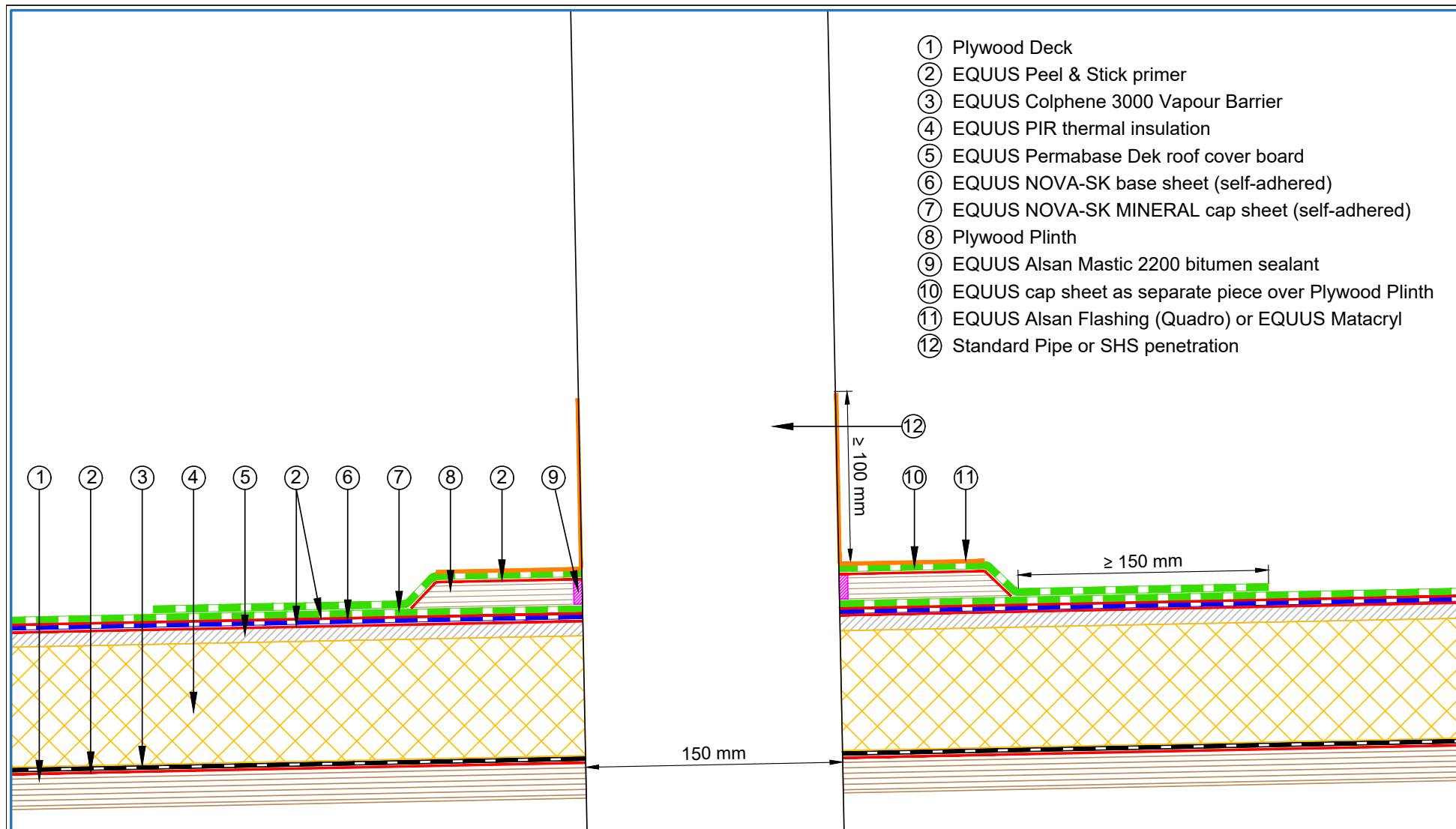
E-mail : info@equus.nz
Web : www.equus.nz

PROJECT :	Warm Roof on Plywood Standard Detail - NOVA-SK FLAMELSS SYSTEM		
TITLE :	Allproof dome clamp ring drain 168.80DCR		
NUMBER :	SNWRPs-D3c	SCALE :	NTS
DRAWN BY :	NKT	DATE :	29-Aug-2024
		REVISED :	
<p><small>Equus Waterproof Membrane Details are specially drawn for use by Local Authorities, Building Contractors, Equus Applicators, Architects and design professionals. All details are drawn to assist in the development of project specific details. Details may be modified where necessary to accommodate job specific requirements but must be approved by Equus Industries Ltd. All components must be supplied by Equus Industries Ltd. Equus reserves the right to alter or upgrade details at any time without prior notice.</small></p>			





 E-mail : info@equus.nz Web : www.equus.nz	PROJECT :		Warm Roof on Plywood Standard Detail - NOVA-SK FLAMELESS SYSTEM	
	TITLE :		Standard Pipe or SHS penetration (PIR insulation)	
	NUMBER :	SNWRPs-D5a	SCALE :	NTS
	DRAWN BY :	NKT	DATE :	29-Aug-2024
			REVISED :	
Equus Waterproof Membrane Details are specially drawn for use by Local Authorities, Building Contractors, Equus Applicators, Architects and design professionals. All details are drawn to assist in the development of project specific details. Details may be modified where necessary to accommodate job specific requirements but must be approved by Equus Industries Ltd. All components must be supplied by Equus Industries Ltd. Equus reserves the right to alter or upgrade details at any time without prior notice.				
			 AUTHORISED DISTRIBUTOR SOPREMA	

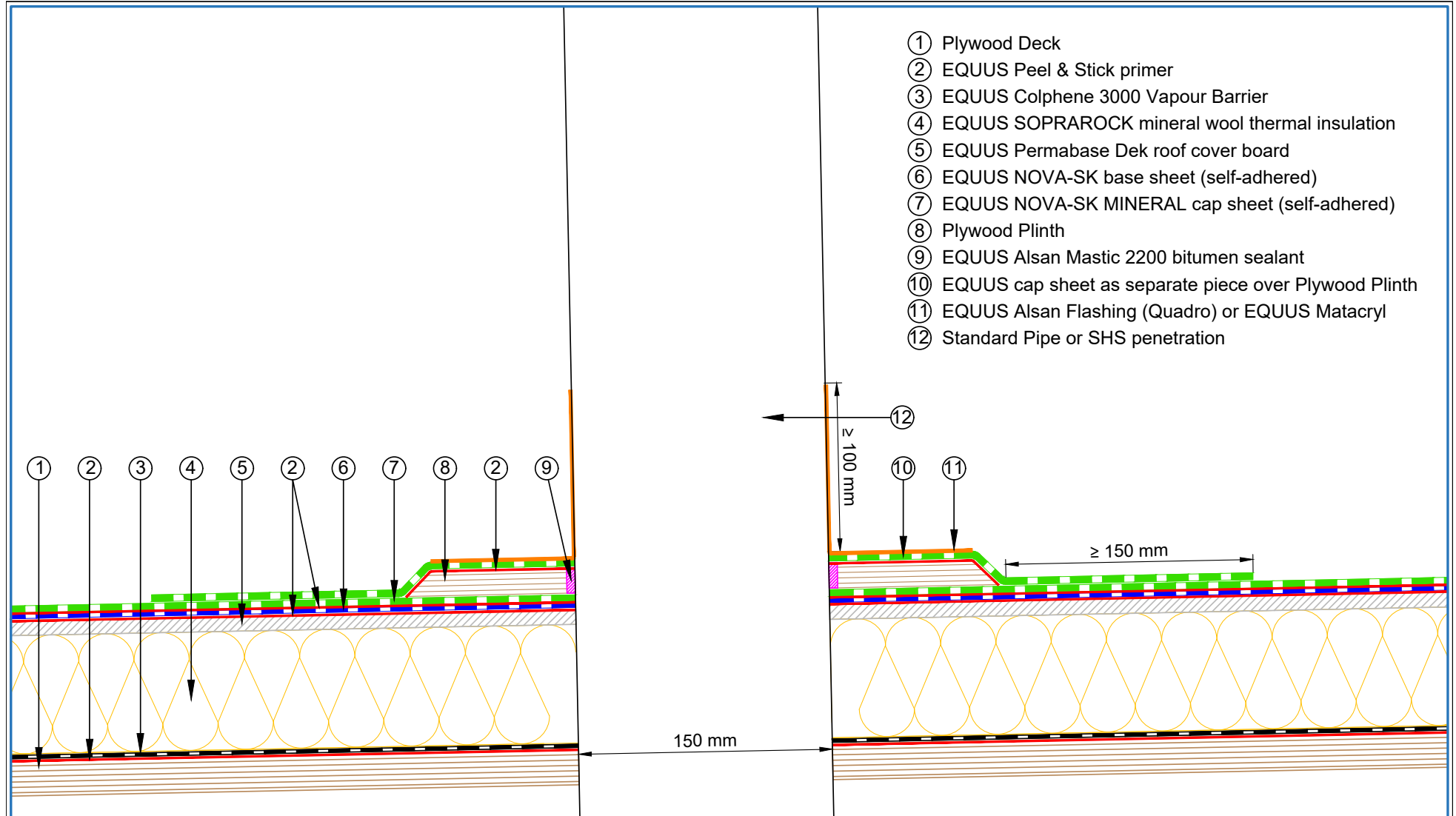


- ① Plywood Deck
- ② EQUUS Peel & Stick primer
- ③ EQUUS Colphene 3000 Vapour Barrier
- ④ EQUUS PIR thermal insulation
- ⑤ EQUUS Permabase Dek roof cover board
- ⑥ EQUUS NOVA-SK base sheet (self-adhered)
- ⑦ EQUUS NOVA-SK MINERAL cap sheet (self-adhered)
- ⑧ Plywood Plinth
- ⑨ EQUUS Alsan Mastic 2200 bitumen sealant
- ⑩ EQUUS cap sheet as separate piece over Plywood Plinth
- ⑪ EQUUS Alsan Flashing (Quadro) or EQUUS Matacryn
- ⑫ Standard Pipe or SHS penetration

E-mail : info@equus.nz
Web : www.equus.nz

PROJECT :	Warm Roof on Plywood Standard Detail - NOVA-SK FLAMELSS SYSTEM		
TITLE :	Standard Pipe or SHS penetration with cover board (PIR insulation)		
NUMBER :	SNWRPs-D5c	SCALE :	
DRAWN BY :	NKT	DATE :	29-Aug-2024
		REVISED :	
<p><small>Equus Waterproof Membrane Details are specially drawn for use by Local Authorities, Building Contractors, Equus Applicators, Architects and design professionals. All details are drawn to assist in the development of project specific details. Details may be modified where necessary to accommodate job specific requirements but must be approved by Equus Industries Ltd. All components must be supplied by Equus Industries Ltd. Equus reserves the right to alter or upgrade details at any time without prior notice.</small></p>			

AUTHORISED DISTRIBUTOR
SOPREMA



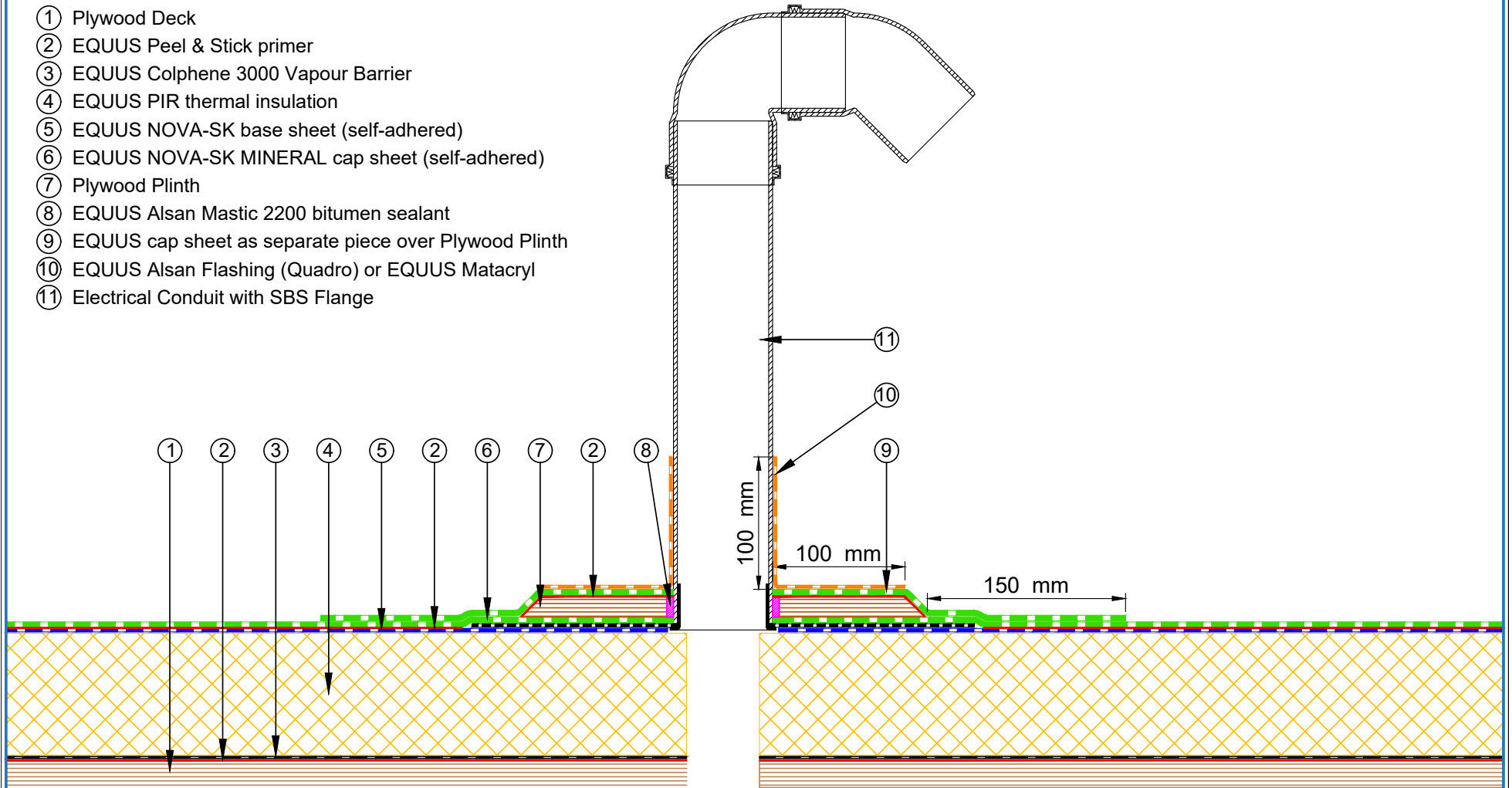
- ① Plywood Deck
- ② EQUUS Peel & Stick primer
- ③ EQUUS Colphene 3000 Vapour Barrier
- ④ EQUUS SOPRAROCK mineral wool thermal insulation
- ⑤ EQUUS Permabase Dek roof cover board
- ⑥ EQUUS NOVA-SK base sheet (self-adhered)
- ⑦ EQUUS NOVA-SK MINERAL cap sheet (self-adhered)
- ⑧ Plywood Plinth
- ⑨ EQUUS Alsan Mastic 2200 bitumen sealant
- ⑩ EQUUS cap sheet as separate piece over Plywood Plinth
- ⑪ EQUUS Alsan Flashing (Quadro) or EQUUS Matacryn
- ⑫ Standard Pipe or SHS penetration

E-mail : info@equus.nz
Web : www.equus.nz

PROJECT :	Warm Roof on Plywood Standard Detail - NOVA-SK FLAMELSS SYSTEM		
TITLE :	Standard Pipe or SHS penetration with cover board (Mineral wool insulation)		
NUMBER :	SNWRPs-D5d	SCALE :	NTS
DRAWN BY :	NKT	DATE :	29-Aug-2024
REVISD :			
<p><small>Equus Waterproof Membrane Details are specially drawn for use by Local Authorities, Building Contractors, Equus Applicators, Architects and design professionals. All details are drawn to assist in the development of project specific details. Details may be modified where necessary to accommodate job specific requirements but must be approved by Equus Industries Ltd. All components must be supplied by Equus Industries Ltd. Equus reserves the right to alter or upgrade details at any time without prior notice.</small></p>			

AUTHORISED DISTRIBUTOR
SOPREMA

- ① Plywood Deck
- ② EQUUS Peel & Stick primer
- ③ EQUUS Colphene 3000 Vapour Barrier
- ④ EQUUS PIR thermal insulation
- ⑤ EQUUS NOVA-SK base sheet (self-adhered)
- ⑥ EQUUS NOVA-SK MINERAL cap sheet (self-adhered)
- ⑦ Plywood Plinth
- ⑧ EQUUS Alsan Mastic 2200 bitumen sealant
- ⑨ EQUUS cap sheet as separate piece over Plywood Plinth
- ⑩ EQUUS Alsan Flashing (Quadro) or EQUUS Matacyl
- ⑪ Electrical Conduit with SBS Flange

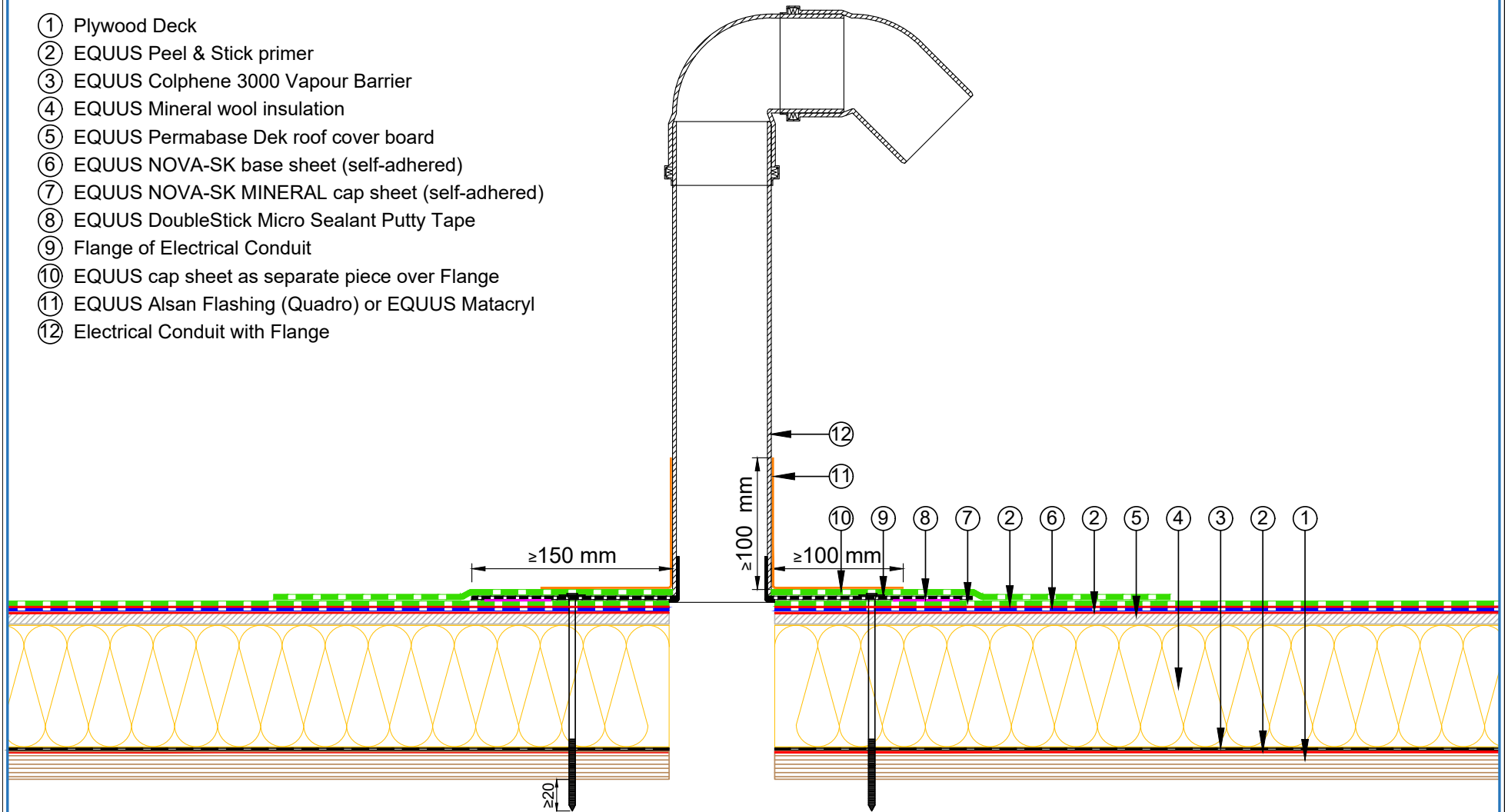


E-mail : info@equus.nz
Web : www.equus.nz

PROJECT :	Warm Roof on Plywood Standard Detail - NOVA-SK FLAMELSS SYSTEM		
TITLE :	Electrical conduit (PIR insulation)		
NUMBER :	SNWRPs-D6a	SCALE :	NTS
DRAWN BY :	NKT	DATE :	29-Aug-2024
		REVISED :	
<p><small>Equus Waterproof Membrane Details are specially drawn for use by Local Authorities, Building Contractors, Equus Applicators, Architects and design professionals. All details are drawn to assist in the development of project specific details. Details may be modified where necessary to accommodate job specific requirements but must be approved by Equus Industries Ltd. All components must be supplied by Equus Industries Ltd. Equus reserves the right to alter or upgrade details at any time without prior notice.</small></p>			



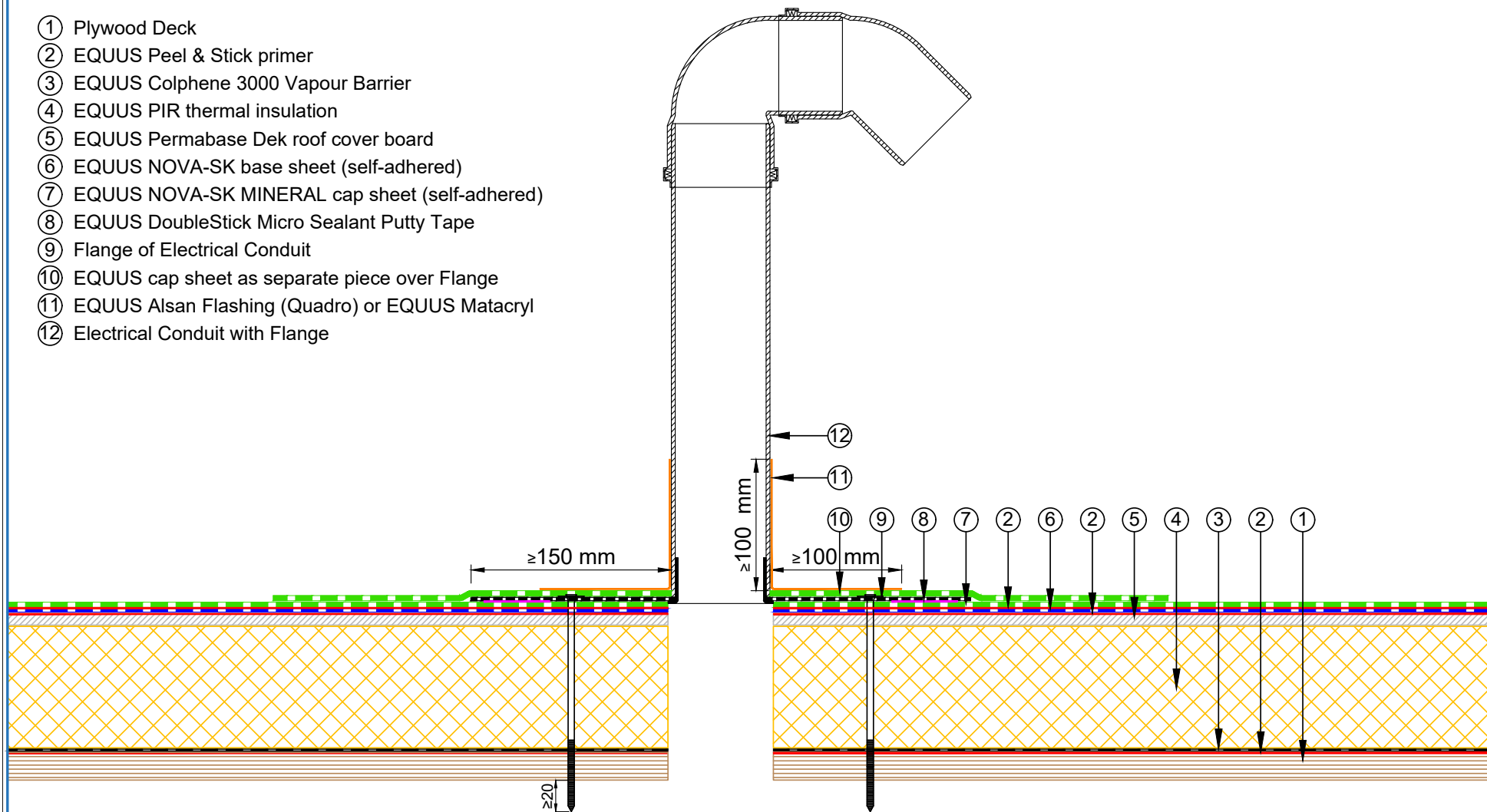
- ① Plywood Deck
- ② EQUUS Peel & Stick primer
- ③ EQUUS Colphene 3000 Vapour Barrier
- ④ EQUUS Mineral wool insulation
- ⑤ EQUUS Permabase Dek roof cover board
- ⑥ EQUUS NOVA-SK base sheet (self-adhered)
- ⑦ EQUUS NOVA-SK MINERAL cap sheet (self-adhered)
- ⑧ EQUUS DoubleStick Micro Sealant Putty Tape
- ⑨ Flange of Electrical Conduit
- ⑩ EQUUS cap sheet as separate piece over Flange
- ⑪ EQUUS Alsan Flashing (Quadro) or EQUUS Matacyl
- ⑫ Electrical Conduit with Flange



PROJECT :	Warm Roof on Plywood Standard Detail - NOVA-SK FLAMELSS SYSTEM		
TITLE :	Electrical conduit with roof cover board (Mineral wool insulation)		
NUMBER :	SNWRPs-D6c	SCALE :	NTS
DRAWN BY :	NKT	DATE :	29-Aug-2024
REVISED :			
<p><small>Equus Waterproof Membrane Details are specially drawn for use by Local Authorities, Building Contractors, Equus Applicators, Architects and design professionals. All details are drawn to assist in the development of project specific details. Details may be modified where necessary to accommodate job specific requirements but must be approved by Equus Industries Ltd. All components must be supplied by Equus Industries Ltd. Equus reserves the right to alter or upgrade details at any time without prior notice.</small></p>			



- ① Plywood Deck
- ② EQUUS Peel & Stick primer
- ③ EQUUS Colphene 3000 Vapour Barrier
- ④ EQUUS PIR thermal insulation
- ⑤ EQUUS Permabase Dek roof cover board
- ⑥ EQUUS NOVA-SK base sheet (self-adhered)
- ⑦ EQUUS NOVA-SK MINERAL cap sheet (self-adhered)
- ⑧ EQUUS DoubleStick Micro Sealant Putty Tape
- ⑨ Flange of Electrical Conduit
- ⑩ EQUUS cap sheet as separate piece over Flange
- ⑪ EQUUS Alsan Flashing (Quadro) or EQUUS Matacyl
- ⑫ Electrical Conduit with Flange

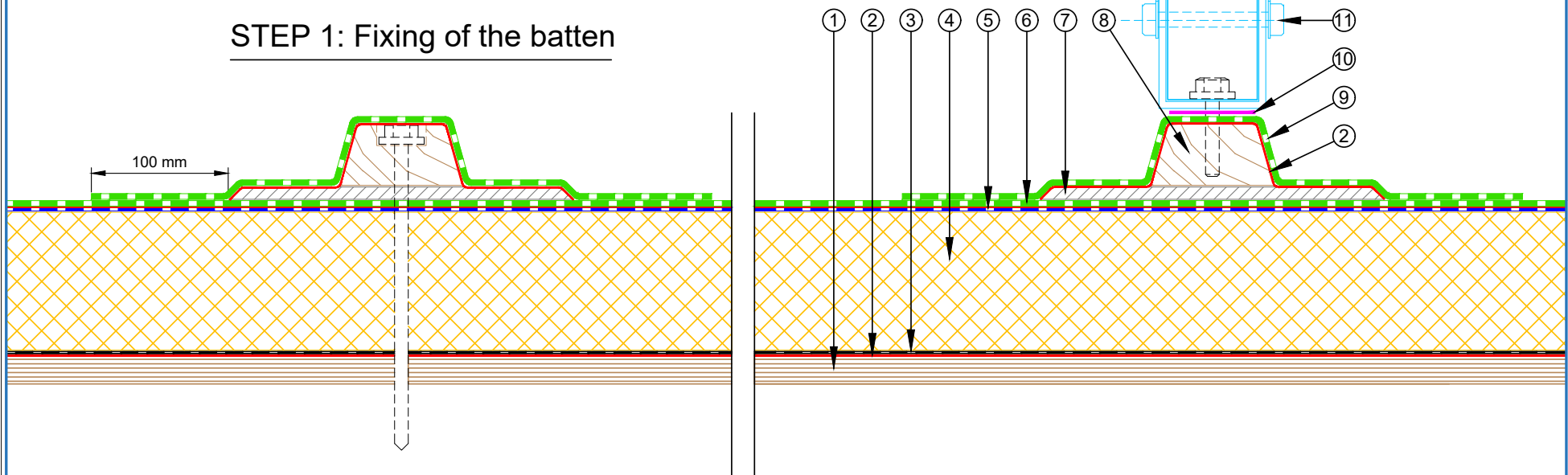


 E-mail : admin@equus.nz Web : www.equus.nz	PROJECT :		Warm Roof on Plywood Standard Detail - NOVAGLASS		 AUTHORISED DISTRIBUTOR
	TITLE :		Electrical conduit with roof cover board (PIR insulation)		
	NUMBER :	SNWRP-D6d	SCALE :	NTS	
	DRAWN BY :	NKT	DATE :	23-NOV-2022	
	REVISD :				
<p><small>Equus Waterproof Membrane Details are specially drawn for use by Local Authorities, Building Contractors, Equus Applicators, Architects and design professionals. All details are drawn to assist in the development of project specific details. Details may be modified where necessary to accommodate job specific requirements but must be approved by Equus Industries Ltd. All components must be supplied by Equus Industries Ltd. Equus reserves the right to alter or upgrade details at any time without prior notice.</small></p>					

- ① Plywood Deck
- ② EQUUS Peel & Stick primer
- ③ EQUUS Colphene 3000 Vapour Barrier
- ④ EQUUS PIR thermal insulation
- ⑤ EQUUS NOVA-SK base sheet (self-adhered)
- ⑥ EQUUS NOVA-SK MINERAL cap sheet (self-adhered)
- ⑦ EQUUS Permabase Dek roof cover board
- ⑧ Timber Roof Batten
- ⑨ EQUUS cap sheet as separate piece over Plywood Plinth
- ⑩ EPDM Washer under Screwhead
- ⑪ Roof Equipment

STEP 1: Fixing of the batten

STEP 2: Fixing of the Equipment



E-mail : info@equus.nz
Web : www.equus.nz

PROJECT :	Warm Roof on Plywood Standard Detail - NOVA-SK FLAMELESS SYSTEM		
TITLE :	Roof Equipment Support Batten (PIR insulation)		
NUMBER :	SNWRPs-D7a	SCALE :	NTS
DRAWN BY :	NKT	DATE :	29-Aug-2024
		REVISED :	

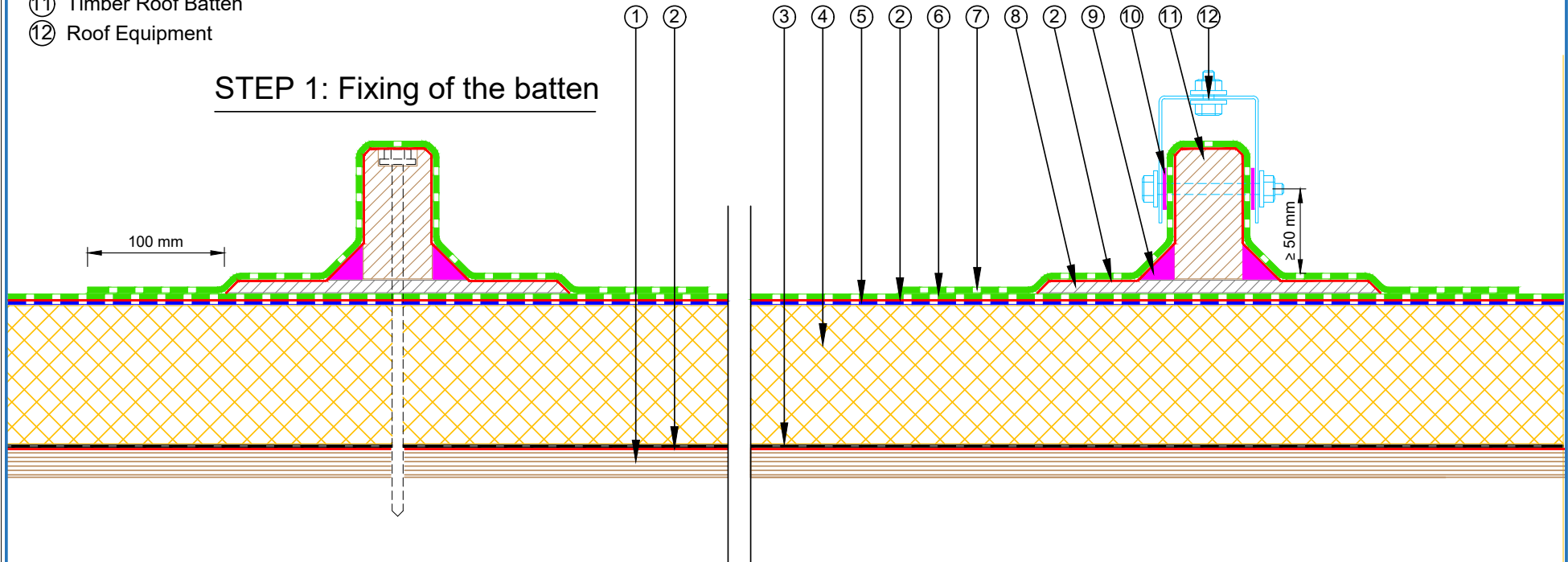
Equus Waterproof Membrane Details are specially drawn for use by Local Authorities, Building Contractors, Equus Applicators, Architects and design professionals. All details are drawn to assist in the development of project specific details. Details may be modified where necessary to accommodate job specific requirements but must be approved by Equus Industries Ltd. All components must be supplied by Equus Industries Ltd. Equus reserves the right to alter or upgrade details at any time without prior notice.



- ① Plywood Deck
- ② EQUUS Peel & Stick primer
- ③ EQUUS Colphene 3000 Vapour Barrier
- ④ EQUUS PIR thermal insulation
- ⑤ EQUUS NOVA-SK base sheet (self-adhered)
- ⑥ EQUUS NOVA-SK MINERAL cap sheet (self-adhered)
- ⑦ EQUUS cap sheet as separate piece over Plywood Plinth
- ⑧ EQUUS Permabase Dek roof cover board
- ⑨ EQUUS bitumen fillet or approved alternative
- ⑩ EPDM Washer under Screwhead
- ⑪ Timber Roof Batten
- ⑫ Roof Equipment

STEP 2: Fixing of the Equipment

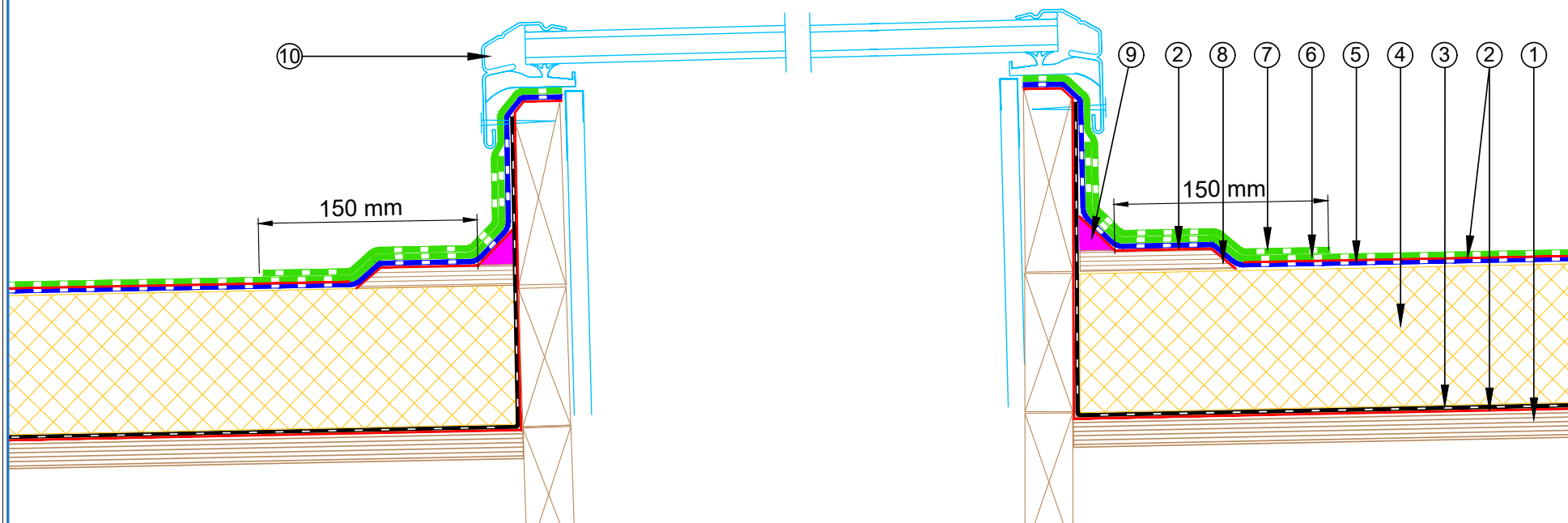
STEP 1: Fixing of the batten



PROJECT :	Warm Roof on Plywood Standard Detail - NOVA-SK FLAMELESS SYSTEM		
TITLE :	Roof Equipment Support Batten - optional (PIR insulation)		
NUMBER :	SNWRPs-D7c	SCALE :	NTS
DRAWN BY :	NKT	DATE :	29-Aug-2024
REVISED :			

Equus Waterproof Membrane Details are specially drawn for use by Local Authorities, Building Contractors, Equus Applicators, Architects and design professionals. All details are drawn to assist in the development of project specific details. Details may be modified where necessary to accommodate job specific requirements but must be approved by Equus Industries Ltd. All components must be supplied by Equus Industries Ltd. Equus reserves the right to alter or upgrade details at any time without prior notice.

- ① Plywood Deck
- ② EQUUS Peel & Stick primer
- ③ EQUUS Colphene 3000 Vapour Barrier
- ④ EQUUS PIR thermal insulation
- ⑤ EQUUS NOVA-SK base sheet (self-adhered)
- ⑥ EQUUS NOVA-SK MINERAL cap sheet (self-adhered)
- ⑦ EQUUS cap sheet as separate piece over Plywood Plinth
- ⑧ Plywood Plinth
- ⑨ EQUUS bitumen fillet or approved alternative
- ⑩ Skylight Joinery



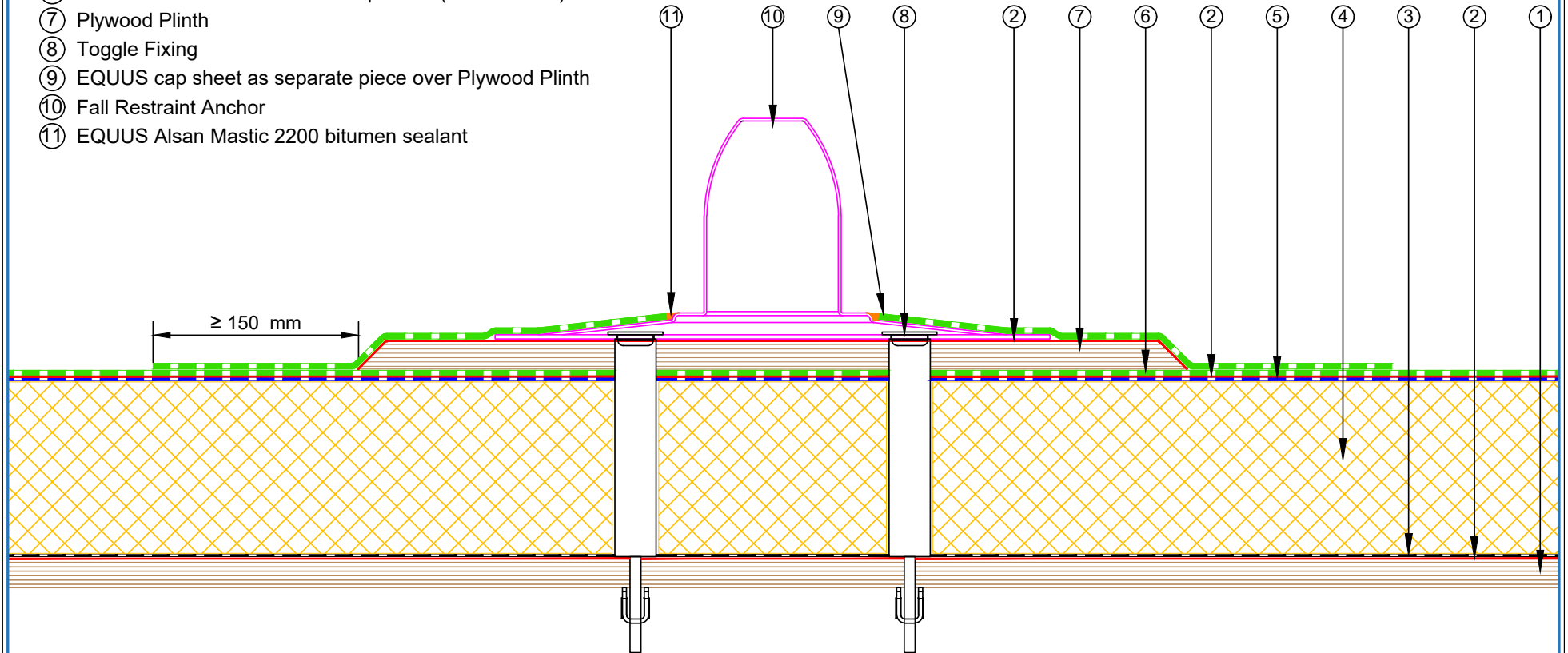
E-mail : admin@equus.nz
Web : www.equus.nz

PROJECT :	Warm Roof on Plywood Standard Detail - NOVAGLASS		
TITLE :	Skylight (PIR insulation)		
NUMBER :	SNWRP-D8a	SCALE :	1 : 4
DRAWN BY :	NKT	DATE :	23-NOV-2022
REVISED :			

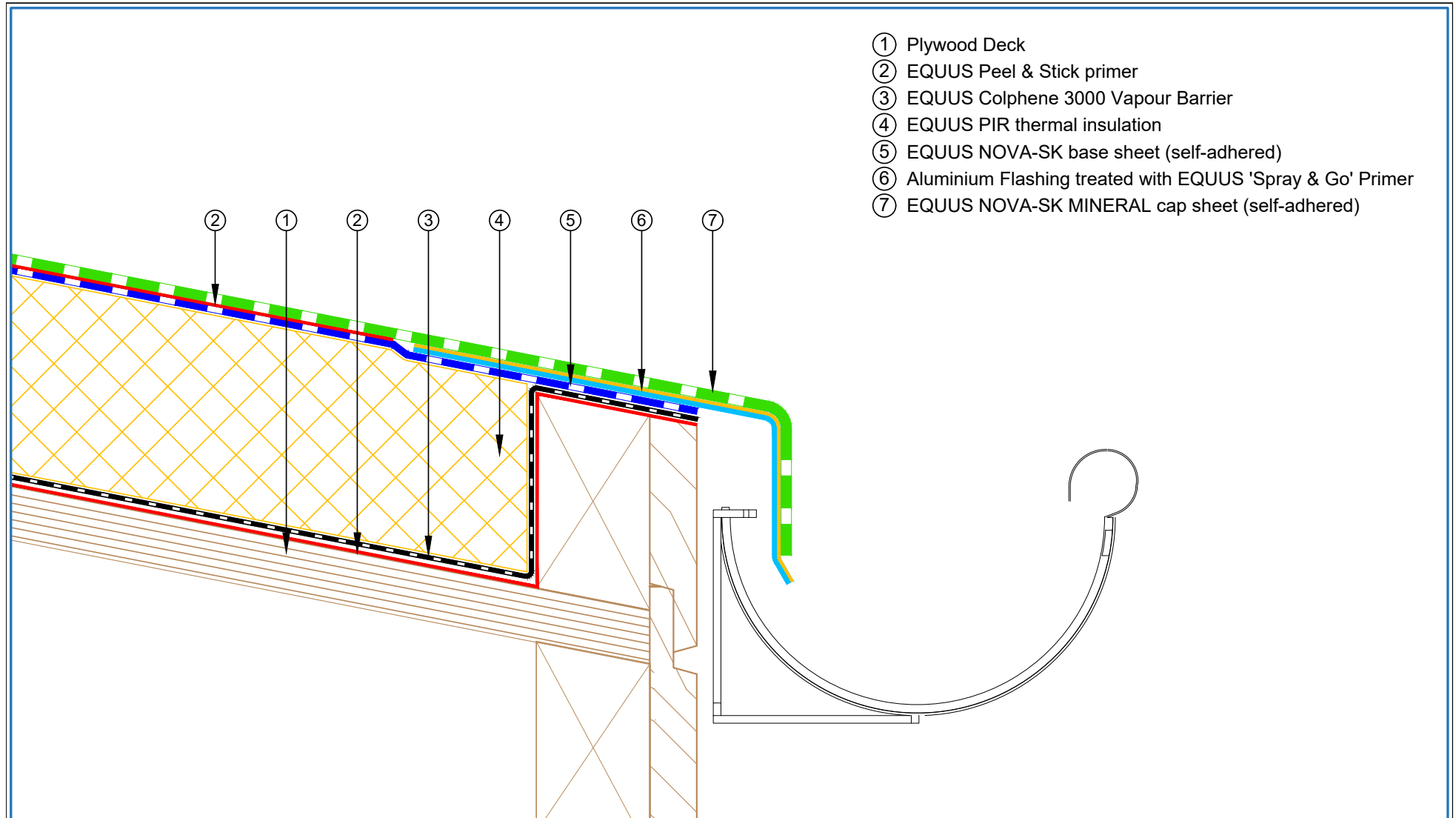
Equus Waterproof Membrane Details are specially drawn for use by Local Authorities, Building Contractors, Equus Applicators, Architects and design professionals. All details are drawn to assist in the development of project specific details. Details may be modified where necessary to accommodate job specific requirements but must be approved by Equus Industries Ltd. All components must be supplied by Equus Industries Ltd. Equus reserves the right to alter or upgrade details at any time without prior notice.



- ① Plywood Deck
- ② EQUUS Peel & Stick primer
- ③ EQUUS Colphene 3000 Vapour Barrier
- ④ EQUUS PIR thermal insulation
- ⑤ EQUUS NOVA-SK base sheet (self-adhered)
- ⑥ EQUUS NOVA-SK MINERAL cap sheet (self-adhered)
- ⑦ Plywood Plinth
- ⑧ Toggle Fixing
- ⑨ EQUUS cap sheet as separate piece over Plywood Plinth
- ⑩ Fall Restraint Anchor
- ⑪ EQUUS Alsan Mastic 2200 bitumen sealant



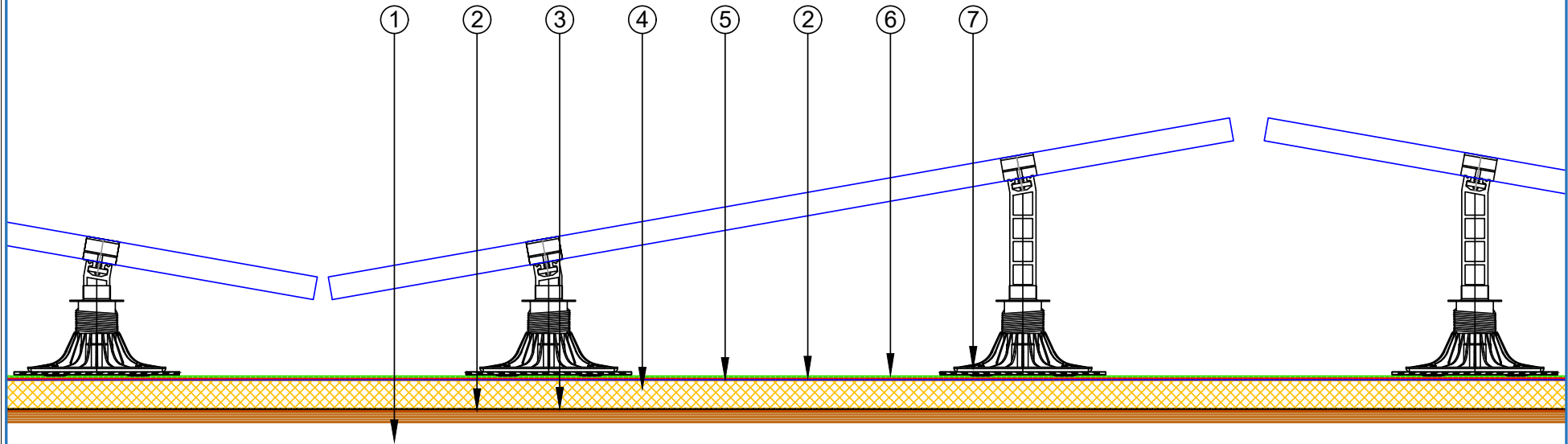
 E-mail : info@equus.nz Web : www.equus.nz	PROJECT :		Warm Roof on Plywood Standard Detail - NOVA-SK FLAMELESS SYSTEM	
	TITLE :		Fall restraint (PIR insulation)	
	NUMBER :	SNWRPs-D9a	SCALE :	
	DRAWN BY :	NKT	DATE :	29-Aug-2024
			REVISED :	
<p><small>Equus Waterproof Membrane Details are specially drawn for use by Local Authorities, Building Contractors, Equus Applicators, Architects and design professionals. All details are drawn to assist in the development of project specific details. Details may be modified where necessary to accommodate job specific requirements but must be approved by Equus Industries Ltd. All components must be supplied by Equus Industries Ltd. Equus reserves the right to alter or upgrade details at any time without prior notice.</small></p>				
			 AUTHORISED DISTRIBUTOR	



- ① Plywood Deck
- ② EQUUS Peel & Stick primer
- ③ EQUUS Colphene 3000 Vapour Barrier
- ④ EQUUS PIR thermal insulation
- ⑤ EQUUS NOVA-SK base sheet (self-adhered)
- ⑥ Aluminium Flashing treated with EQUUS 'Spray & Go' Primer
- ⑦ EQUUS NOVA-SK MINERAL cap sheet (self-adhered)

 E-mail : info@equus.nz Web : www.equus.nz	PROJECT :		Warm Roof on Plywood Standard Detail - NOVA-SK FLAMELESS SYSTEM	
	TITLE :		Connection to External Gutter (PIR insulation)	
	NUMBER :	SNWRPs-D10a	SCALE :	NTS
	DRAWN BY :	NKT	DATE :	29-Aug-2024
			REVISED :	
<p><small>Equus Waterproof Membrane Details are specially drawn for use by Local Authorities, Building Contractors, Equus Applicators, Architects and design professionals. All details are drawn to assist in the development of project specific details. Details may be modified where necessary to accommodate job specific requirements but must be approved by Equus Industries Ltd. All components must be supplied by Equus Industries Ltd. Equus reserves the right to alter or upgrade details at any time without prior notice.</small></p>				

- ① Plywood Deck
- ② EQUUS Peel & Stick primer
- ③ EQUUS Colphene 3000 Vapour Barrier
- ④ EQUUS PIR thermal insulation
- ⑤ EQUUS NOVA-SK base sheet (self-adhered)
- ⑥ EQUUS NOVA-SK MINERAL cap sheet (self-adhered)
- ⑦ EQUUS SOPREMA SOPRASOLAR® FIX EVO TILT



PROJECT :	Warm Roof on Plywood Standard Detail - NOVA-SK FLAMELSS SYSTEM		
TITLE :	Roof build up with SOPRASOLAR		
NUMBER :	SNWRPs-D11a	SCALE :	NTS
DRAWN BY :	NKT	DATE :	29-Aug-2024
		REVISED :	
<p><small>Equus Waterproof Membrane Details are specially drawn for use by Local Authorities, Building Contractors, Equus Applicators, Architects and design professionals. All details are drawn to assist in the development of project specific details. Details may be modified where necessary to accommodate job specific requirements but must be approved by Equus Industries Ltd. All components must be supplied by Equus Industries Ltd. Equus reserves the right to alter or upgrade details at any time without prior notice.</small></p>			

