



EQUUS SOPREMA NOVATHERM WARM ROOF SYSTEM

Standard Details on Concrete Substrate



CELEBRATING
40 YEARS
1982-2022

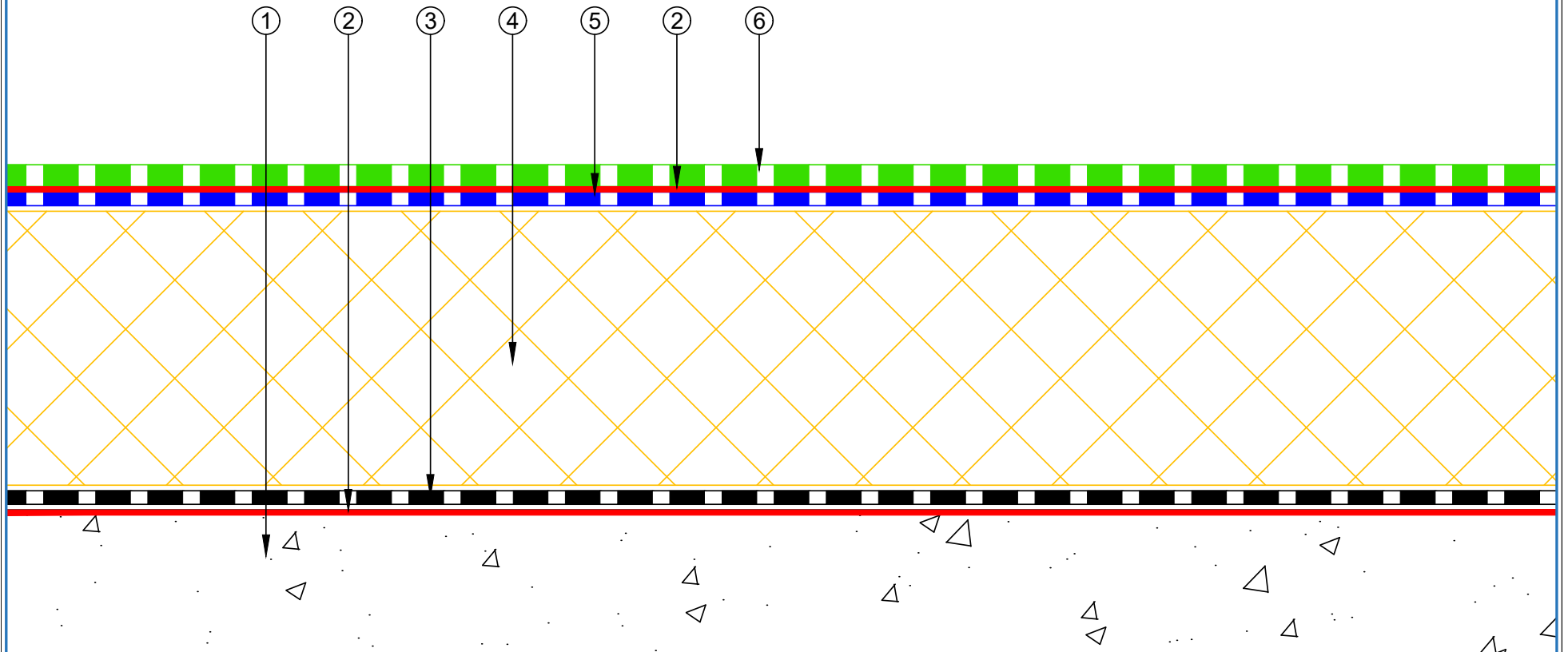


SEPTEMBER 2024

CONTENTS

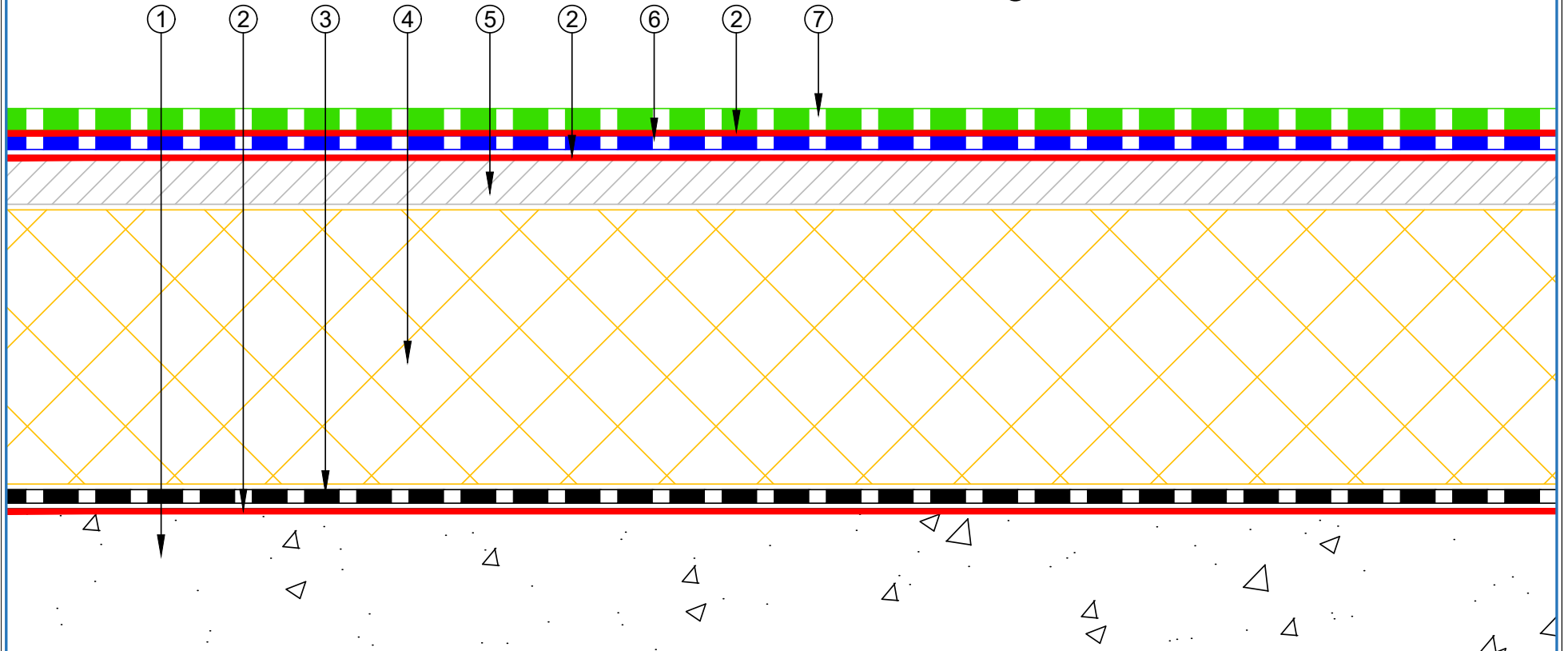
SNWRCs-D0a	Roof Built Up	1	SNWRCs-D6c	Electrical Conduit with Roof Board (Mineral Wool)	14
SNWRCs-D0b	Roof Build up with PIR and Roof Board	2	SNWRCs-D6d	Electrical Conduit with Roof Coverboard (PIR)	15
SNWRCs-D0d	Roof Build up with Mineral Wool and Roof Board	3	SNWRCs-D7a	Roof Equipment Support Batten (PIR)	16
SNWRCs-D1a	Concrete Parapet with Roof Cap	4	SNWRCs-D7c	Roof Equipment Support – Optional (PIR)	17
SNWRCs-D1b	Concrete Parapet with Roof Edge	5	SNWRCs-D8a	Skylight (PIR)	18
SNWRCs-D3a	Allproof Dome Clamp Ring Drain	6	SNWRCs-D9a	Fall Restraint (PIR)	19
SNWRCs-D3b	Aquaknight HiFlow Roof Drain	7	SNWRCs-D10a	Connection to External Gutter (PIR)	20
SNWRCs-D3c	Allproof Dome Clamp Ring Drain 168.80DCR	8	SNWRCs-D11a	Monkey Toe Walkway Fixing Detail (PIR)	21
SNWRCs-D5a	Standard Pipe or SHS penetration (PIR)	9	SNWRCs-D12a	Concrete Footing for Heavy Equipment (PIR)	22
SNWRCs-D5c	Standard Pipe or SHS with Cover Board (PIR)	10	SNWRCs-D13a	Pavers on Equus FixPlus Pedestals (PIR)	23
SNWRCs-D5d	Standard Pipe or SHS with Board (Mineral Wool)	11	SNWRCs-D13b	Pavers on Equus FixPlus with Roof Board (PIR)	24
SNWRCs-D5e	Standard uPVC Penetration (PIR)	12	SNWRCs-D13c	Pavers on Equus FixPlus with Board (Mineral Wool)	25
SNWRCs-D6a	Electrical Conduit (PIR)	13	SNWRCs-D14a	Roof Build Up with SOPRASOLAR	26

- ① Concrete Roof Slab laid to Fall
- ② EQUUS Peel & Stick primer
- ③ EQUUS Colphene 3000 Vapour Barrier
- ④ EQUUS PIR thermal insulation
- ⑤ EQUUS NOVA-SK base sheet (self-adhered)
- ⑥ EQUUS NOVA-SK MINERAL cap sheet (self-adhered)



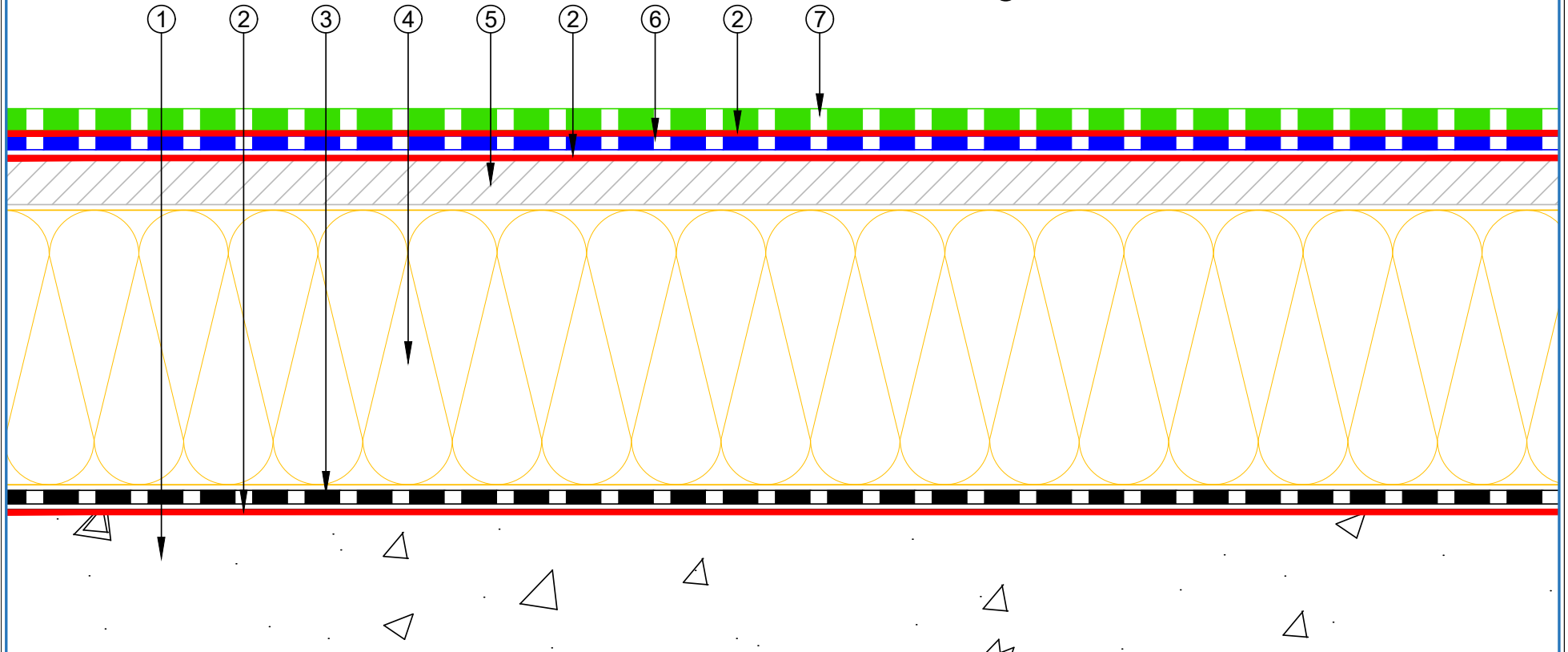
 E-mail : info@equus.nz Web : www.equus.nz	PROJECT :		Warm Roof on Concrete Standard Detail - NOVA-SK FLAMELESS SYSTEM		
	TITLE :		Roof build up with PIR		
	NUMBER :		SNWRCs-D0a	SCALE :	NTS
	DRAWN BY :		NKT	DATE :	28-Aug-2024
				REVISED :	
<p><small>Equus Waterproof Membrane Details are specially drawn for use by Local Authorities, Building Contractors, Equus Applicators, Architects and design professionals. All details are drawn to assist in the development of project specific details. Details may be modified where necessary to accommodate job specific requirements but must be approved by Equus Industries Ltd. All components must be supplied by Equus Industries Ltd. Equus reserves the right to alter or upgrade details at any time without prior notice.</small></p>					

- ① Concrete Roof Slab laid to Fall
- ② EQUUS Peel & Stick primer
- ③ EQUUS Colphene 3000 Vapour Barrier
- ④ EQUUS PIR thermal insulation
- ⑤ EQUUS Permabase Dek roof cover board
- ⑥ EQUUS NOVA-SK base sheet (self-adhered)
- ⑦ EQUUS NOVA-SK MINERAL cap sheet (self-adhered)

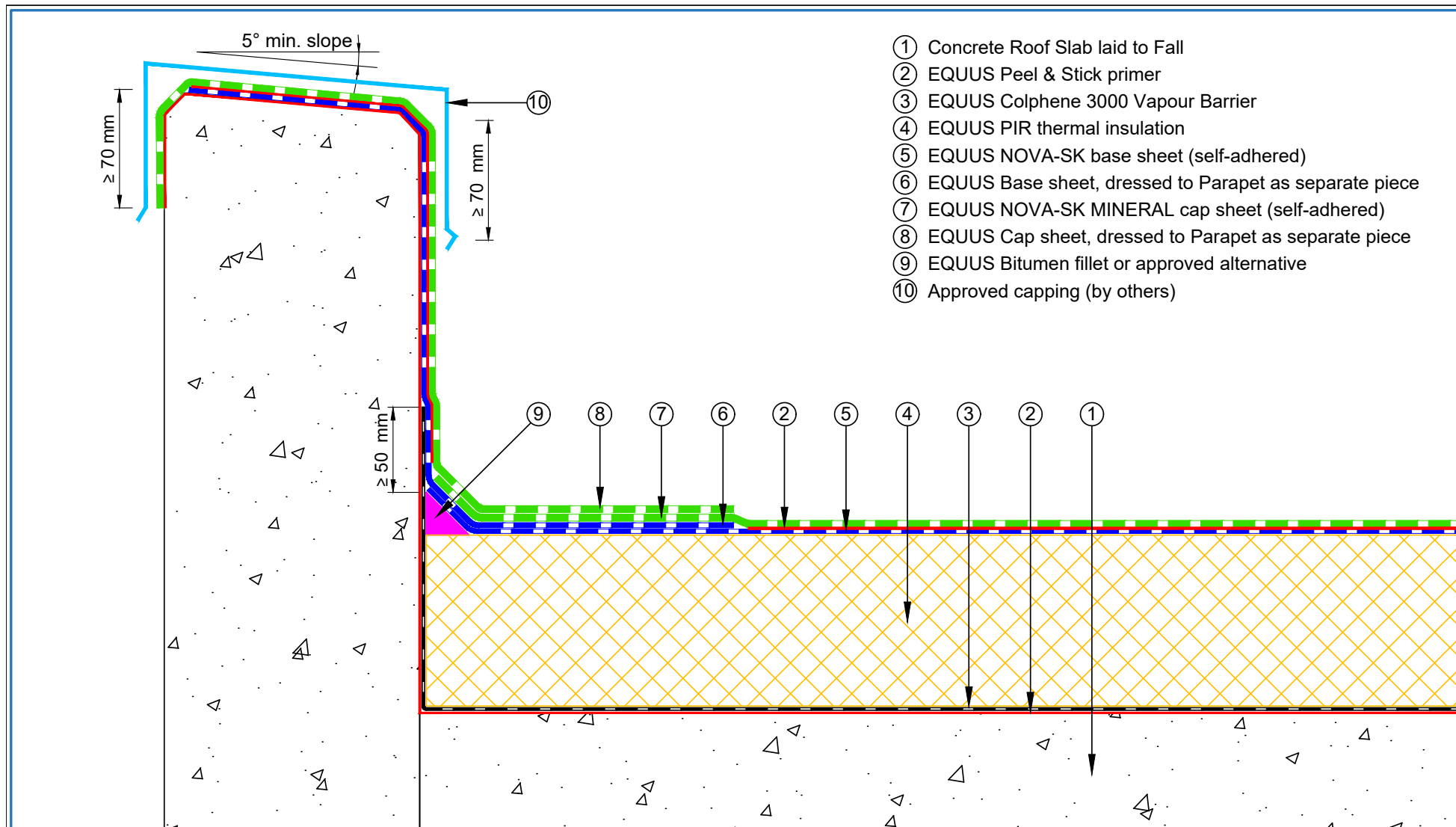


 E-mail : info@equus.nz Web : www.equus.co.nz	PROJECT :		Warm Roof on Concrete Standard Detail - NOVA-SK FLAMELESS SYSTEM	
	TITLE :		Roof build up with PIR and roof board	
	NUMBER :	SDWRCs-D0b	SCALE :	NTS
	DRAWN BY :	NKT	DATE :	28-Aug-2024
			REVISED :	
<p><small>Equus Waterproof Membrane Details are specially drawn for use by Local Authorities, Building Contractors, Equus Applicators, Architects and design professionals. All details are drawn to assist in the development of project specific details. Details may be modified where necessary to accommodate job specific requirements but must be approved by Equus Industries Ltd. All components must be supplied by Equus Industries Ltd. Equus reserves the right to alter or upgrade details at any time without prior notice.</small></p>				

- ① Concrete Roof Slab laid to Fall
- ② EQUUS Peel & Stick primer
- ③ EQUUS Colphene 3000 Vapour Barrier
- ④ EQUUS SOPRAROCK mineral wool thermal insulation
- ⑤ EQUUS Permabase Dek roof cover board
- ⑥ EQUUS NOVA-SK base sheet (self-adhered)
- ⑦ EQUUS NOVA-SK MINERAL cap sheet (self-adhered)

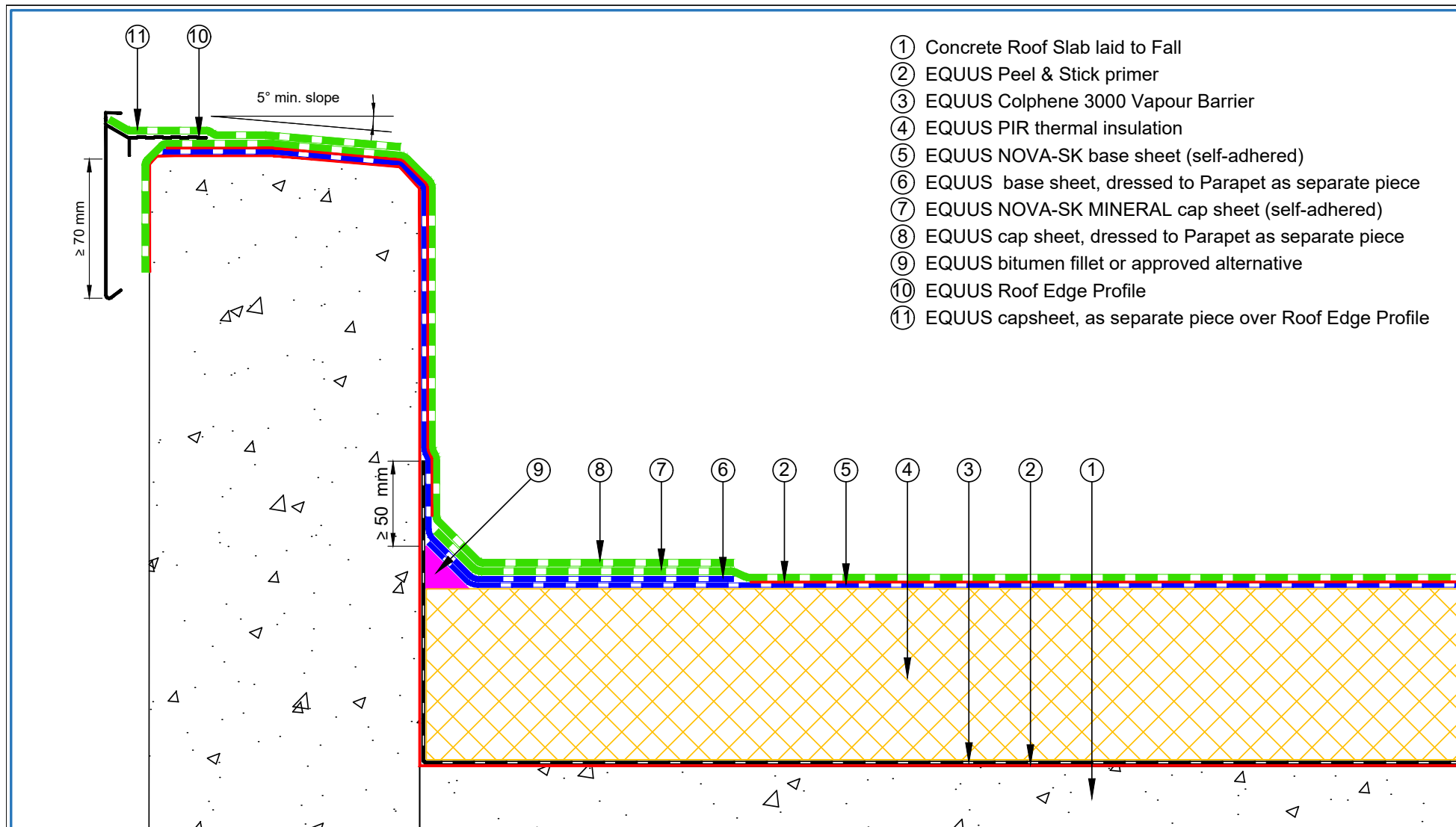


 E-mail : info@equus.nz Web : www.equus.co.nz	PROJECT :		Warm Roof on Concrete Standard Detail - NOVA-SK FLAMELSS SYSTEM	
	TITLE :		Roof build up with Mineral wool insulation and Roof board	
	NUMBER :	SNWRCs-D0d	SCALE :	NTS
	DRAWN BY :	NKT	DATE :	28-Aug-2024
			REVISED :	
<p><small>Equus Waterproof Membrane Details are specially drawn for use by Local Authorities, Building Contractors, Equus Applicators, Architects and design professionals. All details are drawn to assist in the development of project specific details. Details may be modified where necessary to accommodate job specific requirements but must be approved by Equus Industries Ltd. All components must be supplied by Equus Industries Ltd. Equus reserves the right to alter or upgrade details at any time without prior notice.</small></p>				
			 AUTHORISED DISTRIBUTOR	



- ① Concrete Roof Slab laid to Fall
- ② EQUUS Peel & Stick primer
- ③ EQUUS Colphene 3000 Vapour Barrier
- ④ EQUUS PIR thermal insulation
- ⑤ EQUUS NOVA-SK base sheet (self-adhered)
- ⑥ EQUUS Base sheet, dressed to Parapet as separate piece
- ⑦ EQUUS NOVA-SK MINERAL cap sheet (self-adhered)
- ⑧ EQUUS Cap sheet, dressed to Parapet as separate piece
- ⑨ EQUUS Bitumen fillet or approved alternative
- ⑩ Approved capping (by others)

 E-mail : info@equus.nz Web : www.equus.co.nz	PROJECT :		Warm Roof on Concrete Standard Detail - NOVA-SK FLAMELSS SYSTEM	
	TITLE :		Concrete parapet detail with roof cap flashing (PIR insulation)	
	NUMBER :	SNWRCs-D1a	SCALE :	NTS
	DRAWN BY :	NKT	DATE :	28-Aug-2024
			REVISED :	
Equus Waterproof Membrane Details are specially drawn for use by Local Authorities, Building Contractors, Equus Applicators, Architects and design professionals. All details are drawn to assist in the development of project specific details. Details may be modified where necessary to accommodate job specific requirements but must be approved by Equus Industries Ltd. All components must be supplied by Equus Industries Ltd. Equus reserves the right to alter or upgrade details at any time without prior notice.				



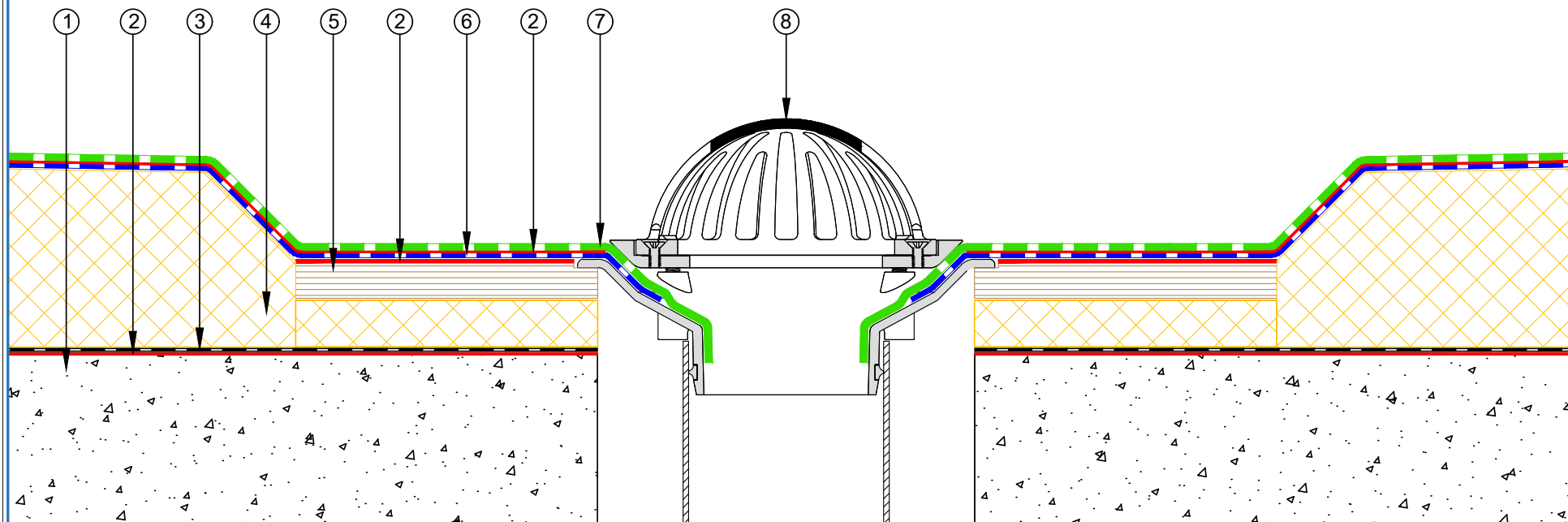
- ① Concrete Roof Slab laid to Fall
- ② EQUUS Peel & Stick primer
- ③ EQUUS Colphene 3000 Vapour Barrier
- ④ EQUUS PIR thermal insulation
- ⑤ EQUUS NOVA-SK base sheet (self-adhered)
- ⑥ EQUUS base sheet, dressed to Parapet as separate piece
- ⑦ EQUUS NOVA-SK MINERAL cap sheet (self-adhered)
- ⑧ EQUUS cap sheet, dressed to Parapet as separate piece
- ⑨ EQUUS bitumen fillet or approved alternative
- ⑩ EQUUS Roof Edge Profile
- ⑪ EQUUS capsheet, as separate piece over Roof Edge Profile

E-mail : info@equus.nz
Web : www.equus.co.nz

PROJECT :	Warm Roof on Concrete Standard Detail - NOVA-SK FLAMELSS SYSTEM		
TITLE :	Concrete parapet detail with roof edge profile (PIR insulation)		
NUMBER :	SNWRCs-D1b	SCALE :	NTS
DRAWN BY :	NKT	DATE :	28-Aug-2024
		REVISED :	
<p><small>Equus Waterproof Membrane Details are specially drawn for use by Local Authorities, Building Contractors, Equus Applicators, Architects and design professionals. All details are drawn to assist in the development of project specific details. Details may be modified where necessary to accommodate job specific requirements but must be approved by Equus Industries Ltd. All components must be supplied by Equus Industries Ltd. Equus reserves the right to alter or upgrade details at any time without prior notice.</small></p>			

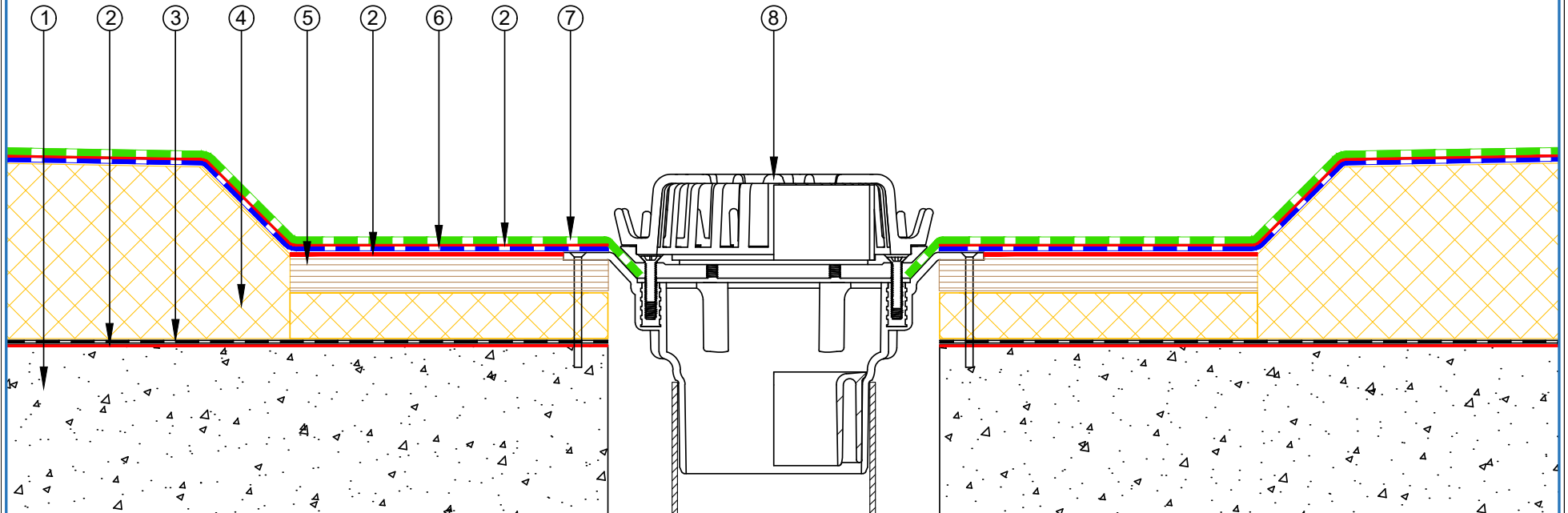
AUTHORISED DISTRIBUTOR
SOPREMA

- ① Concrete Roof Slab laid to Fall
- ② EQUUS Peel & Stick primer
- ③ EQUUS Colphene 3000 Vapour Barrier
- ④ EQUUS PIR thermal insulation
- ⑤ Plywood
- ⑥ EQUUS NOVA-SK base sheet (self-adhered)
- ⑦ EQUUS NOVA-SK MINERAL cap sheet (self-adhered)
- ⑧ Allproof dome clamp ring drain



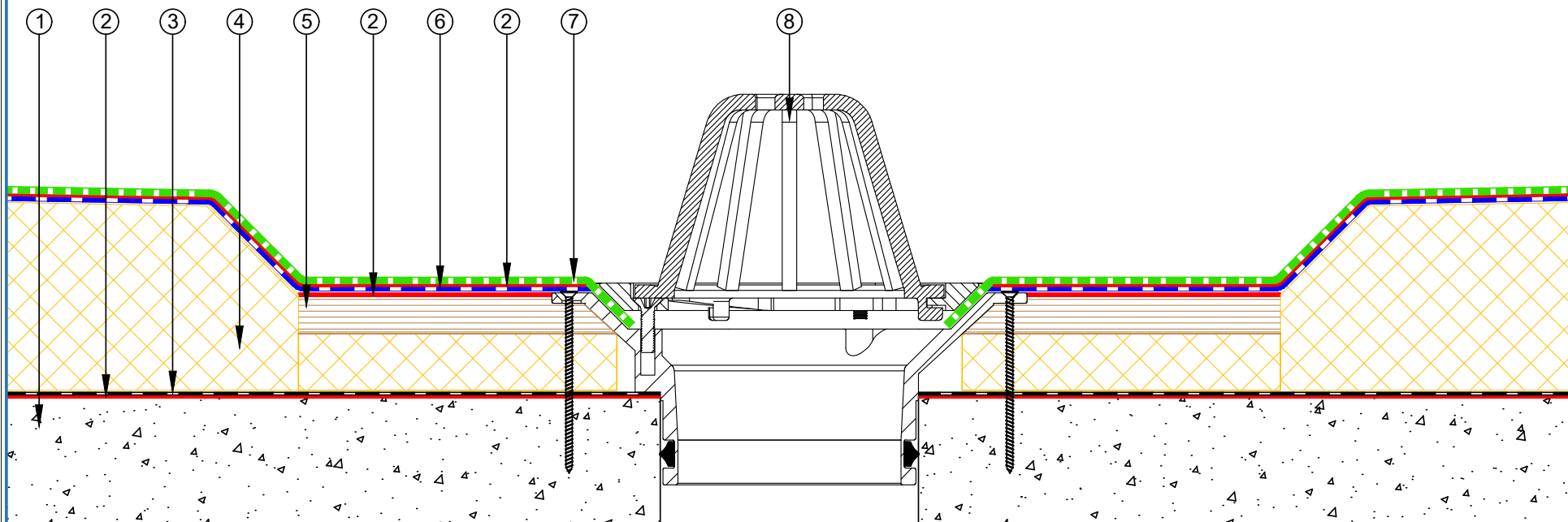
 E-mail : info@equus.nz Web : www.equus.co.nz	PROJECT :		Warm Roof on Concrete Standard Detail - NOVA-SK FLAMELESS SYSTEM		
	TITLE :		Allproof dome clamp ring drain		
	NUMBER :		SNWRCs-D3a	SCALE :	NTS
	DRAWN BY :		NKT	DATE :	28-Aug-2024
				REVISED :	
<p><small>Equus Waterproof Membrane Details are specially drawn for use by Local Authorities, Building Contractors, Equus Applicators, Architects and design professionals. All details are drawn to assist in the development of project specific details. Details may be modified where necessary to accommodate job specific requirements but must be approved by Equus Industries Ltd. All components must be supplied by Equus Industries Ltd. Equus reserves the right to alter or upgrade details at any time without prior notice.</small></p>					

- ① Concrete Roof Slab laid to Fall
- ② EQUUS Peel & Stick primer
- ③ EQUUS Colphene 3000 Vapour Barrier
- ④ EQUUS PIR thermal insulation
- ⑤ Plywood
- ⑥ EQUUS NOVA-SK base sheet (self-adhered)
- ⑦ EQUUS NOVA-SK MINERAL cap sheet (self-adhered)
- ⑧ Aquaknight HiFlow roof drain



 E-mail : info@equus.nz Web : www.equus.co.nz	PROJECT :		Warm Roof on Concrete Standard Detail - NOVA-SK FLAMELESS SYSTEM		 AUTHORISED DISTRIBUTOR	
	TITLE :		Aquaknight HiFlow roof drain			
	NUMBER :		SNWRCs-D3b	SCALE :		NTS
	DRAWN BY :		NKT	DATE :		28-Aug-2024
				REVISED :		
<p><small>Equus Waterproof Membrane Details are specially drawn for use by Local Authorities, Building Contractors, Equus Applicators, Architects and design professionals. All details are drawn to assist in the development of project specific details. Details may be modified where necessary to accommodate job specific requirements but must be approved by Equus Industries Ltd. All components must be supplied by Equus Industries Ltd. Equus reserves the right to alter or upgrade details at any time without prior notice.</small></p>						

- ① Concrete Roof Slab laid to Fall
- ② EQUUS Peel & Stick primer
- ③ EQUUS Colphene 3000 Vapour Barrier
- ④ EQUUS PIR thermal insulation
- ⑤ Plywood
- ⑥ EQUUS NOVA-SK base sheet (self-adhered)
- ⑦ EQUUS NOVA-SK MINERAL cap sheet (self-adhered)
- ⑧ Allproof dome clamp ring drain 168.80DCR

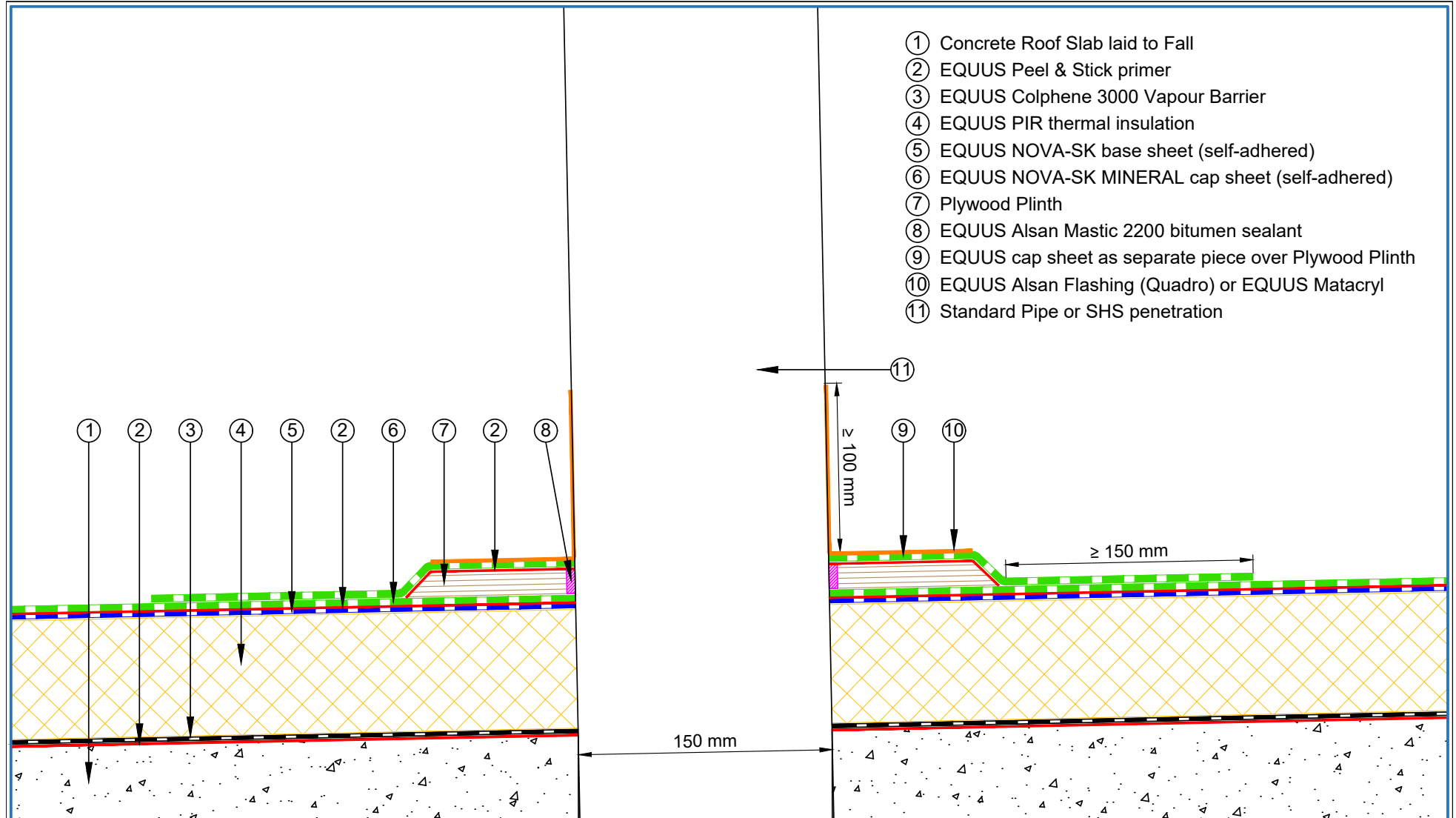


E-mail : info@equus.nz
Web : www.equus.co.nz


PROJECT :	Warm Roof on Concrete Standard Detail - NOVA-SK FLAMELSS SYSTEM		
TITLE :	Allproof dome clamp ring drain 168.80DCR		
NUMBER :	SNWRCs-D3c	SCALE :	NTS
DRAWN BY :	NKT	DATE :	28-Aug-2024
		REVISED :	

Equus Waterproof Membrane Details are specially drawn for use by Local Authorities, Building Contractors, Equus Applicators, Architects and design professionals. All details are drawn to assist in the development of project specific details. Details may be modified where necessary to accommodate job specific requirements but must be approved by Equus Industries Ltd. All components must be supplied by Equus Industries Ltd. Equus reserves the right to alter or upgrade details at any time without prior notice.

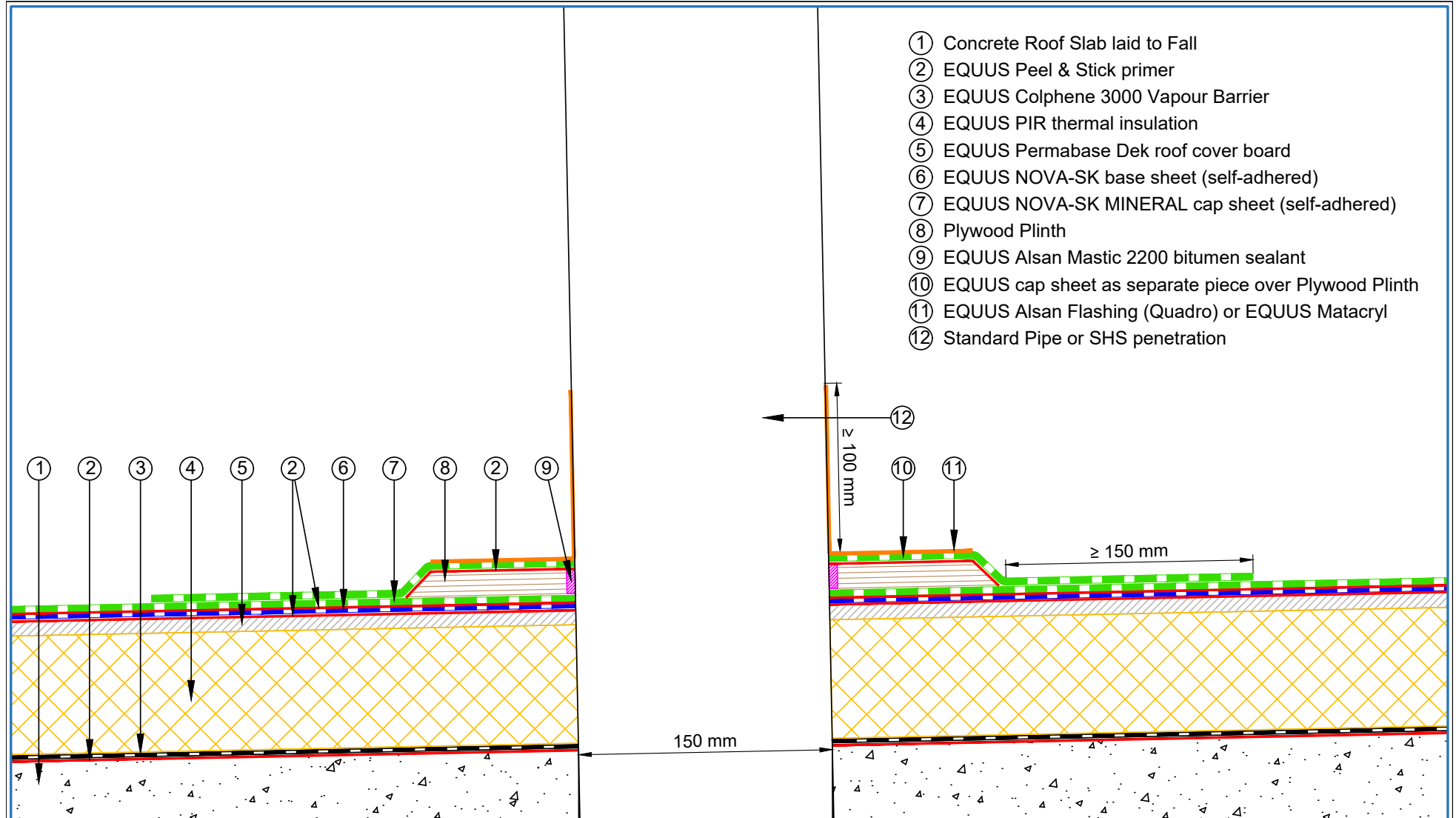




- ① Concrete Roof Slab laid to Fall
- ② EQUUS Peel & Stick primer
- ③ EQUUS Colphene 3000 Vapour Barrier
- ④ EQUUS PIR thermal insulation
- ⑤ EQUUS NOVA-SK base sheet (self-adhered)
- ⑥ EQUUS NOVA-SK MINERAL cap sheet (self-adhered)
- ⑦ Plywood Plinth
- ⑧ EQUUS Alsan Mastic 2200 bitumen sealant
- ⑨ EQUUS cap sheet as separate piece over Plywood Plinth
- ⑩ EQUUS Alsan Flashing (Quadro) or EQUUS Matacryl
- ⑪ Standard Pipe or SHS penetration

 E-mail : info@equus.nz Web : www.equus.co.nz	PROJECT :		Warm Roof on Concrete Standard Detail - NOVA-SK FLAMELSS SYSTEM		
	TITLE :		Standard Pipe or SHS penetration (PIR insulation)		
	NUMBER :		SNWRCs-D5a	SCALE :	NTS
	DRAWN BY :	NKT	DATE :	28-Aug-2024	REVISED :
	Equus Waterproof Membrane Details are specially drawn for use by Local Authorities, Building Contractors, Equus Applicators, Architects and design professionals. All details are drawn to assist in the development of project specific details. Details may be modified where necessary to accommodate job specific requirements but must be approved by Equus Industries Ltd. All components must be supplied by Equus Industries Ltd. Equus reserves the right to alter or upgrade details at any time without prior notice.				



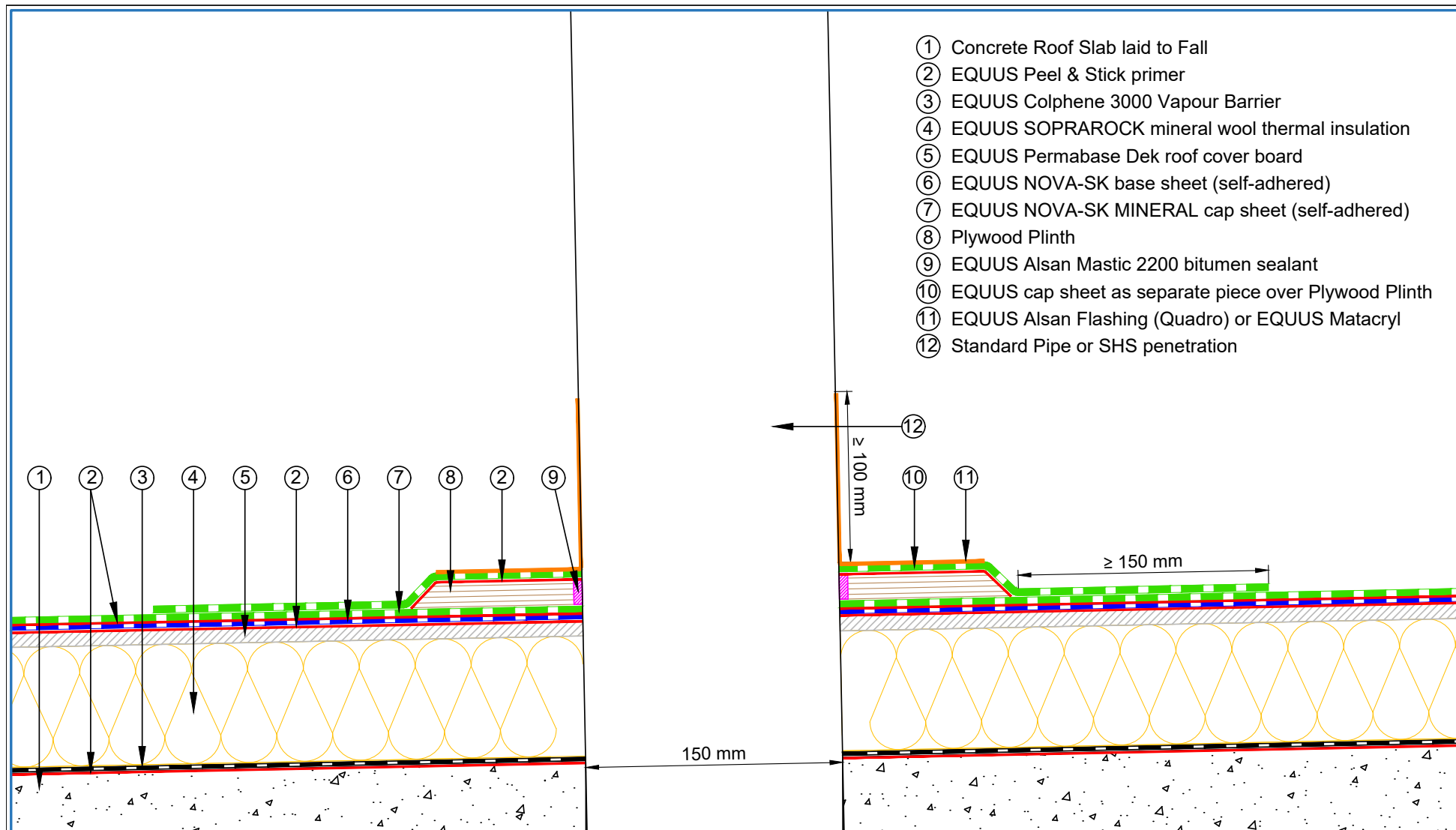


- ① Concrete Roof Slab laid to Fall
- ② EQUUS Peel & Stick primer
- ③ EQUUS Colphene 3000 Vapour Barrier
- ④ EQUUS PIR thermal insulation
- ⑤ EQUUS Permabase Dek roof cover board
- ⑥ EQUUS NOVA-SK base sheet (self-adhered)
- ⑦ EQUUS NOVA-SK MINERAL cap sheet (self-adhered)
- ⑧ Plywood Plinth
- ⑨ EQUUS Alsan Mastic 2200 bitumen sealant
- ⑩ EQUUS cap sheet as separate piece over Plywood Plinth
- ⑪ EQUUS Alsan Flashing (Quadro) or EQUUS Matabryl
- ⑫ Standard Pipe or SHS penetration

E-mail : info@equus.nz
Web : www.equus.co.nz

PROJECT :	Warm Roof on Concrete Standard Detail - NOVA-SK FLAMELSS SYSTEM		
TITLE :	Standard Pipe or SHS penetration with cover board (PIR insulation)		
NUMBER :	SNWRCs-D5c	SCALE :	NTS
DRAWN BY :	NKT	DATE :	28-Aug-2024
REVISED :			
<p><small>Equus Waterproof Membrane Details are specially drawn for use by Local Authorities, Building Contractors, Equus Applicators, Architects and design professionals. All details are drawn to assist in the development of project specific details. Details may be modified where necessary to accommodate job specific requirements but must be approved by Equus Industries Ltd. All components must be supplied by Equus Industries Ltd. Equus reserves the right to alter or upgrade details at any time without prior notice.</small></p>			

AUTHORISED DISTRIBUTOR
SOPREMA



- ① Concrete Roof Slab laid to Fall
- ② EQUUS Peel & Stick primer
- ③ EQUUS Colphene 3000 Vapour Barrier
- ④ EQUUS SOPRAROCK mineral wool thermal insulation
- ⑤ EQUUS Permabase Dek roof cover board
- ⑥ EQUUS NOVA-SK base sheet (self-adhered)
- ⑦ EQUUS NOVA-SK MINERAL cap sheet (self-adhered)
- ⑧ Plywood Plinth
- ⑨ EQUUS Alsan Mastic 2200 bitumen sealant
- ⑩ EQUUS cap sheet as separate piece over Plywood Plinth
- ⑪ EQUUS Alsan Flashing (Quadro) or EQUUS Matacryl
- ⑫ Standard Pipe or SHS penetration

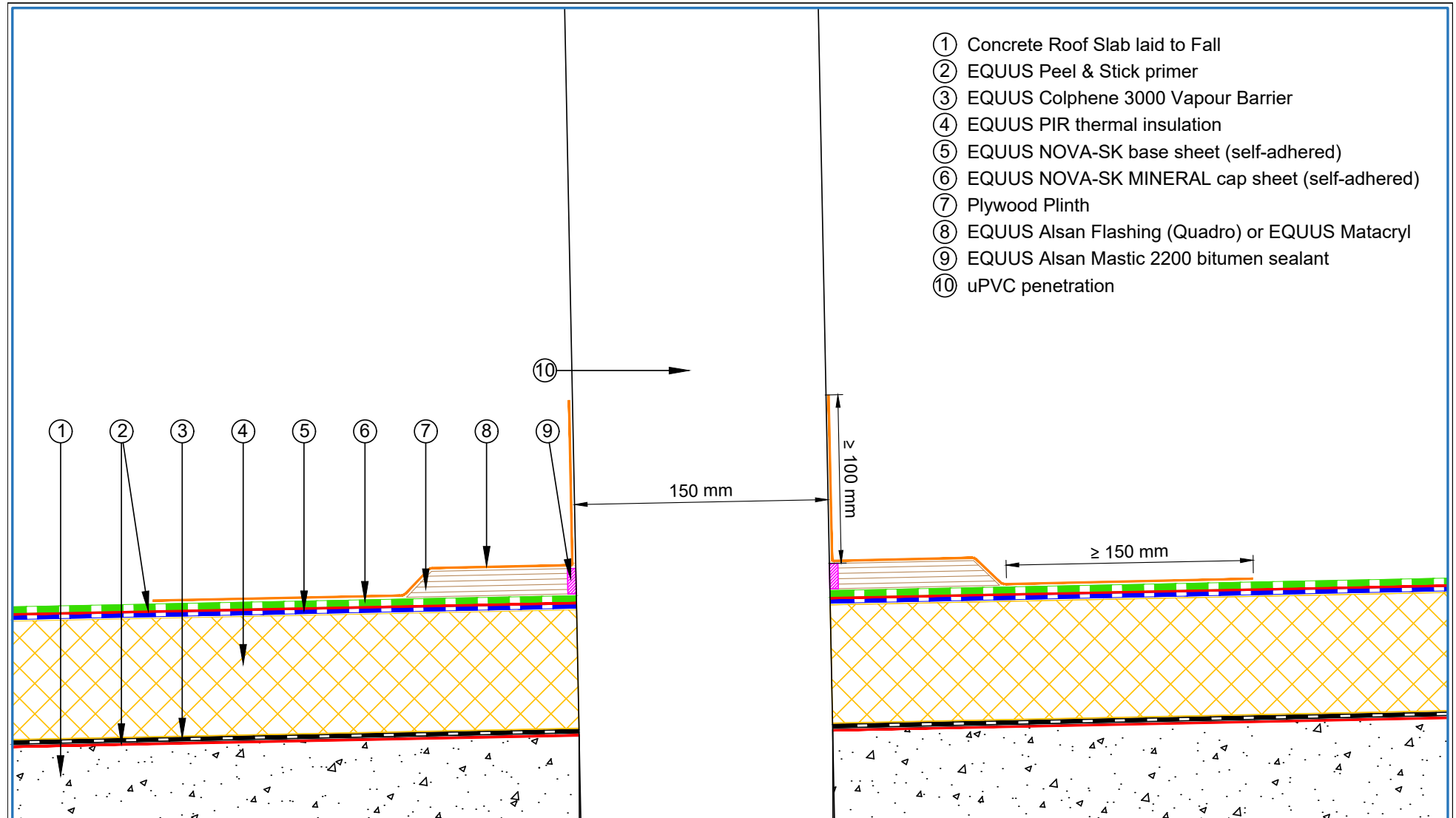


E-mail : info@equus.nz
Web : www.equus.co.nz

PROJECT :	Warm Roof on Concrete Standard Detail - NOVA-SK FLAMELSS SYSTEM		
TITLE :	Standard Pipe or SHS penetration with cover board (Mineral wool insulation)		
NUMBER :	SNWRCs-D5d	SCALE :	NTS
DRAWN BY :	NKT	DATE :	28-Aug-2024
EQUUS Waterproof Membrane Details are specially drawn for use by Local Authorities, Building Contractors, Equus Applicators, Architects and design professionals. All details are drawn to assist in the development of project specific details. Details may be modified where necessary to accommodate job specific requirements but must be approved by Equus Industries Ltd. All components must be supplied by Equus Industries Ltd. Equus reserves the right to alter or upgrade details at any time without prior notice.		REVISED :	



AUTHORISED DISTRIBUTOR
SOPREMA

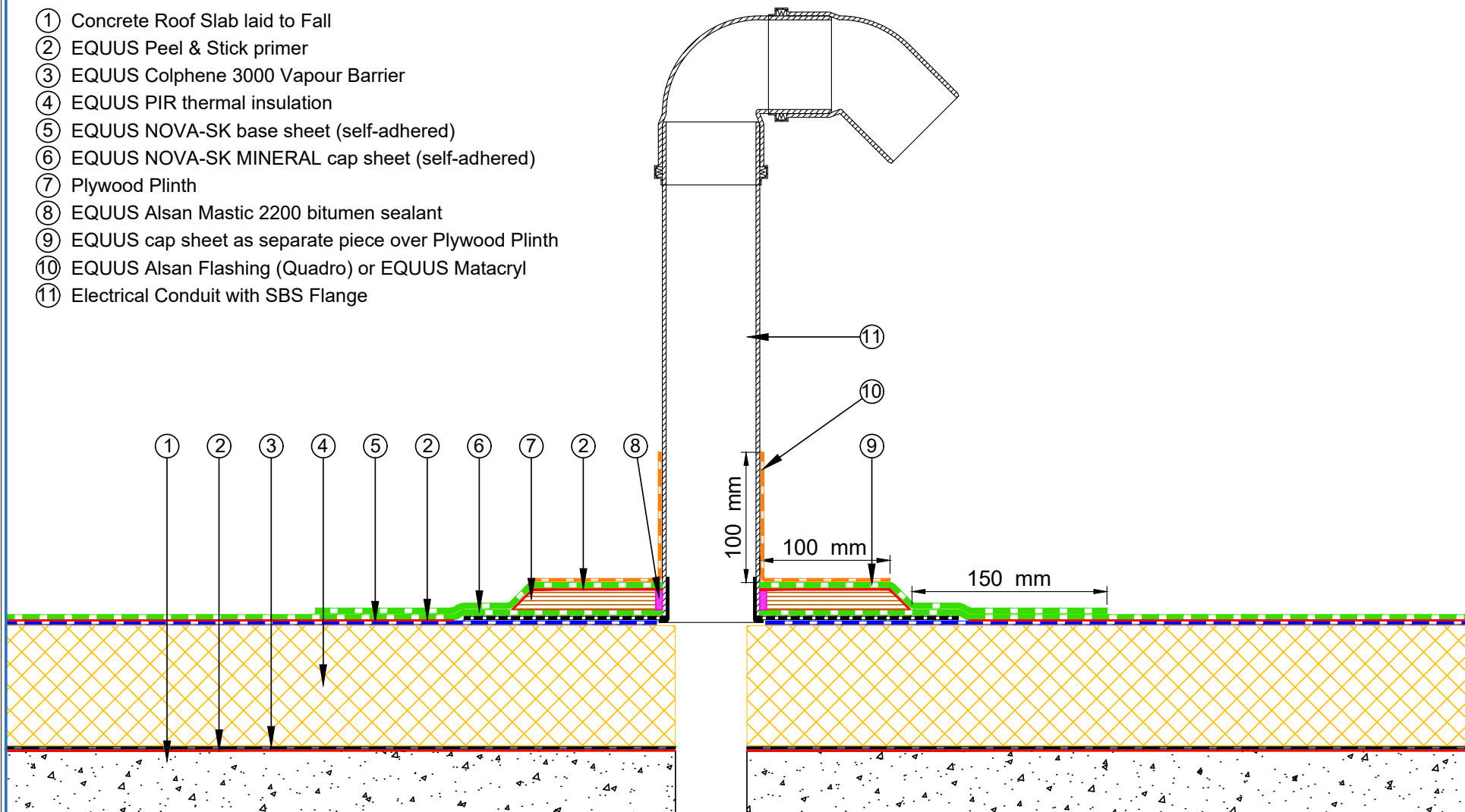



 E-mail : info@equus.nz
 Web : www.equus.co.nz

PROJECT :	Warm Roof on Concrete Standard Detail - NOVA-SK FLAMELESS SYSTEM		
TITLE :	Standard uPVC penetration (PIR insulation)		
NUMBER :	SNWRCs-D5e	SCALE :	NTS
DRAWN BY :	NKT	DATE :	28-Aug-2024
REVISED :			
<p>Equus Waterproof Membrane Details are specially drawn for use by Local Authorities, Building Contractors, Equus Applicators, Architects and design professionals. All details are drawn to assist in the development of project specific details. Details may be modified where necessary to accommodate job specific requirements but must be approved by Equus Industries Ltd. All components must be supplied by Equus Industries Ltd. Equus reserves the right to alter or upgrade details at any time without prior notice.</p>			


 AUTHORISED DISTRIBUTOR
SOPREMA

- ① Concrete Roof Slab laid to Fall
- ② EQUUS Peel & Stick primer
- ③ EQUUS Colphene 3000 Vapour Barrier
- ④ EQUUS PIR thermal insulation
- ⑤ EQUUS NOVA-SK base sheet (self-adhered)
- ⑥ EQUUS NOVA-SK MINERAL cap sheet (self-adhered)
- ⑦ Plywood Plinth
- ⑧ EQUUS Alsan Mastic 2200 bitumen sealant
- ⑨ EQUUS cap sheet as separate piece over Plywood Plinth
- ⑩ EQUUS Alsan Flashing (Quadro) or EQUUS Matacryl
- ⑪ Electrical Conduit with SBS Flange



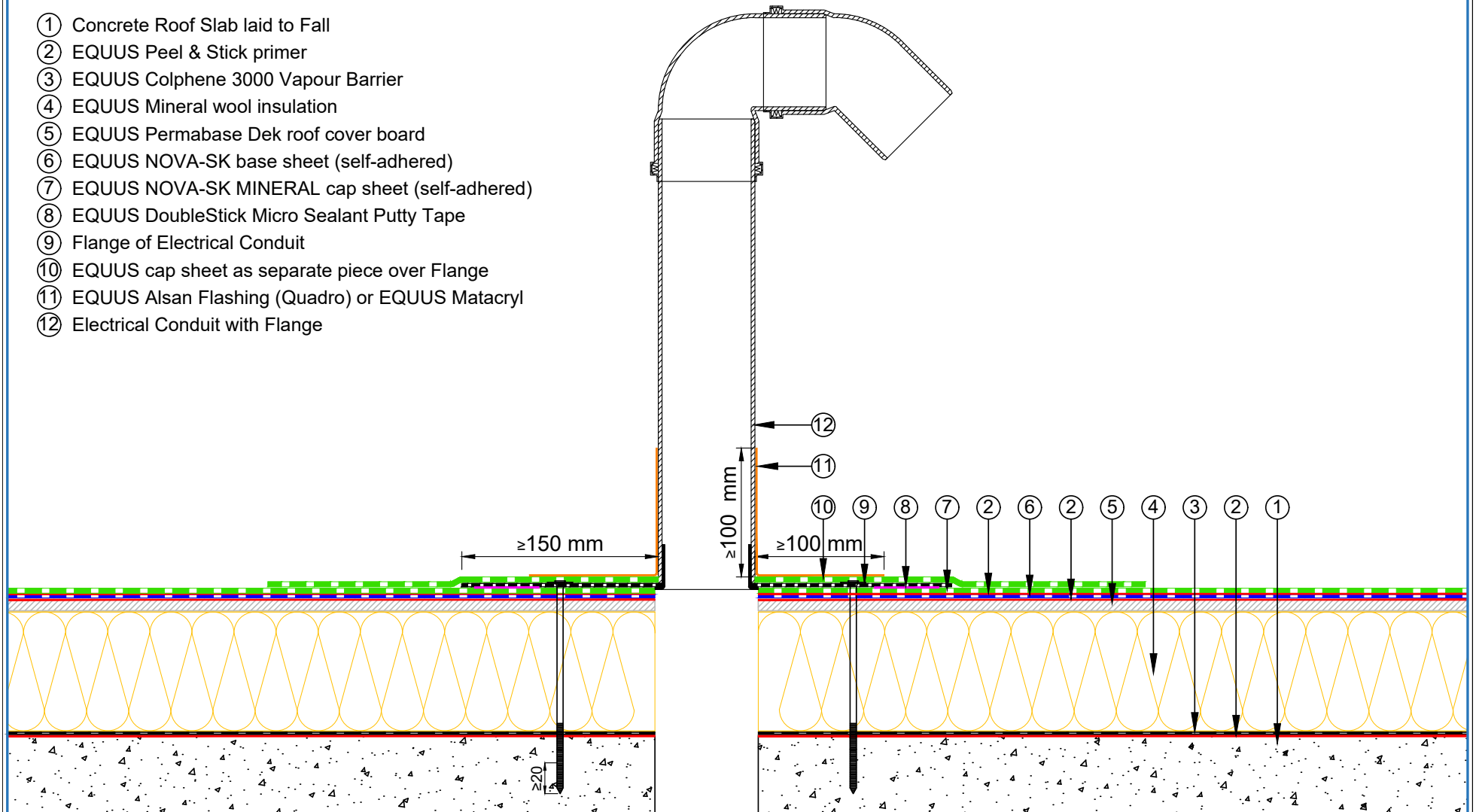
E-mail : info@equus.nz
Web : www.equus.co.nz

PROJECT :	Warm Roof on Concrete Standard Detail - NOVA-SK FLAMELSS SYSTEM		
TITLE :	Electrical conduit (PIR insulation)		
NUMBER :	SNWRCs-D6a	SCALE :	NTS
DRAWN BY :	NKT	DATE :	28-Aug-2024
		REVISED :	

Equus Waterproof Membrane Details are specially drawn for use by Local Authorities, Building Contractors, Equus Applicators, Architects and design professionals. All details are drawn to assist in the development of project specific details. Details may be modified where necessary to accommodate job specific requirements but must be approved by Equus Industries Ltd. All components must be supplied by Equus Industries Ltd. Equus reserves the right to alter or upgrade details at any time without prior notice.

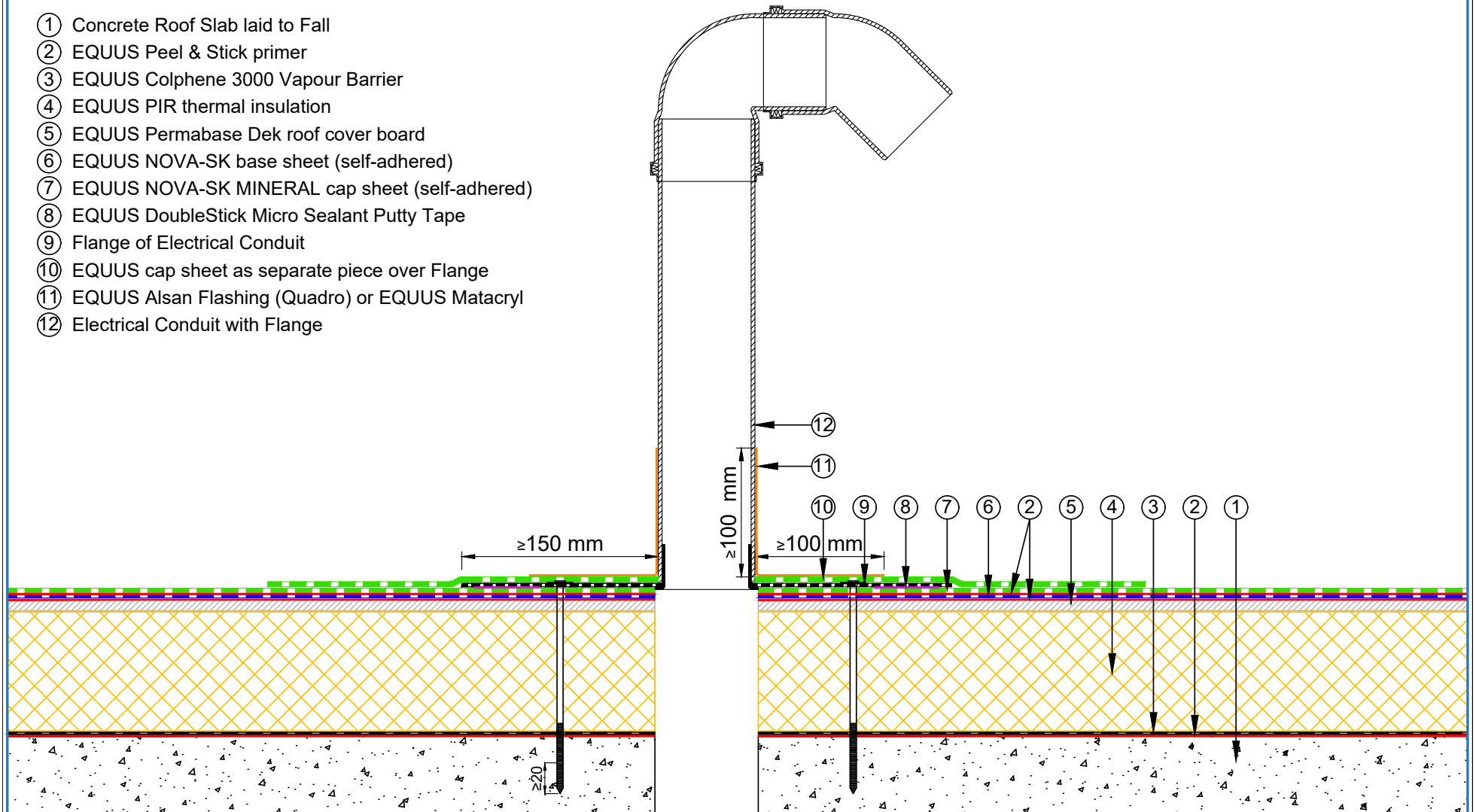


- ① Concrete Roof Slab laid to Fall
- ② EQUUS Peel & Stick primer
- ③ EQUUS Colphene 3000 Vapour Barrier
- ④ EQUUS Mineral wool insulation
- ⑤ EQUUS Permabase Dek roof cover board
- ⑥ EQUUS NOVA-SK base sheet (self-adhered)
- ⑦ EQUUS NOVA-SK MINERAL cap sheet (self-adhered)
- ⑧ EQUUS DoubleStick Micro Sealant Putty Tape
- ⑨ Flange of Electrical Conduit
- ⑩ EQUUS cap sheet as separate piece over Flange
- ⑪ EQUUS Alsan Flashing (Quadro) or EQUUS Matacyl
- ⑫ Electrical Conduit with Flange



 E-mail : info@equus.nz Web : www.equus.co.nz	PROJECT :		Warm Roof on Concrete Standard Detail - NOVA-SK FLAMELSS SYSTEM		 AUTHORISED DISTRIBUTOR		
	TITLE :		Electrical conduit with roof cover board (Mineral wool insulation)				
	NUMBER :	SNWRCs-D6c	SCALE :	NTS			
	DRAWN BY :	NKT	DATE :	28-Aug-2024		REVISED :	
	Equus Waterproof Membrane Details are specially drawn for use by Local Authorities, Building Contractors, Equus Applicators, Architects and design professionals. All details are drawn to assist in the development of project specific details. Details may be modified where necessary to accommodate job specific requirements but must be approved by Equus Industries Ltd. All components must be supplied by Equus Industries Ltd. Equus reserves the right to alter or upgrade details at any time without prior notice.						

- ① Concrete Roof Slab laid to Fall
- ② EQUUS Peel & Stick primer
- ③ EQUUS Colphene 3000 Vapour Barrier
- ④ EQUUS PIR thermal insulation
- ⑤ EQUUS Permabase Dek roof cover board
- ⑥ EQUUS NOVA-SK base sheet (self-adhered)
- ⑦ EQUUS NOVA-SK MINERAL cap sheet (self-adhered)
- ⑧ EQUUS DoubleStick Micro Sealant Putty Tape
- ⑨ Flange of Electrical Conduit
- ⑩ EQUUS cap sheet as separate piece over Flange
- ⑪ EQUUS Alsan Flashing (Quadro) or EQUUS Matacyl
- ⑫ Electrical Conduit with Flange

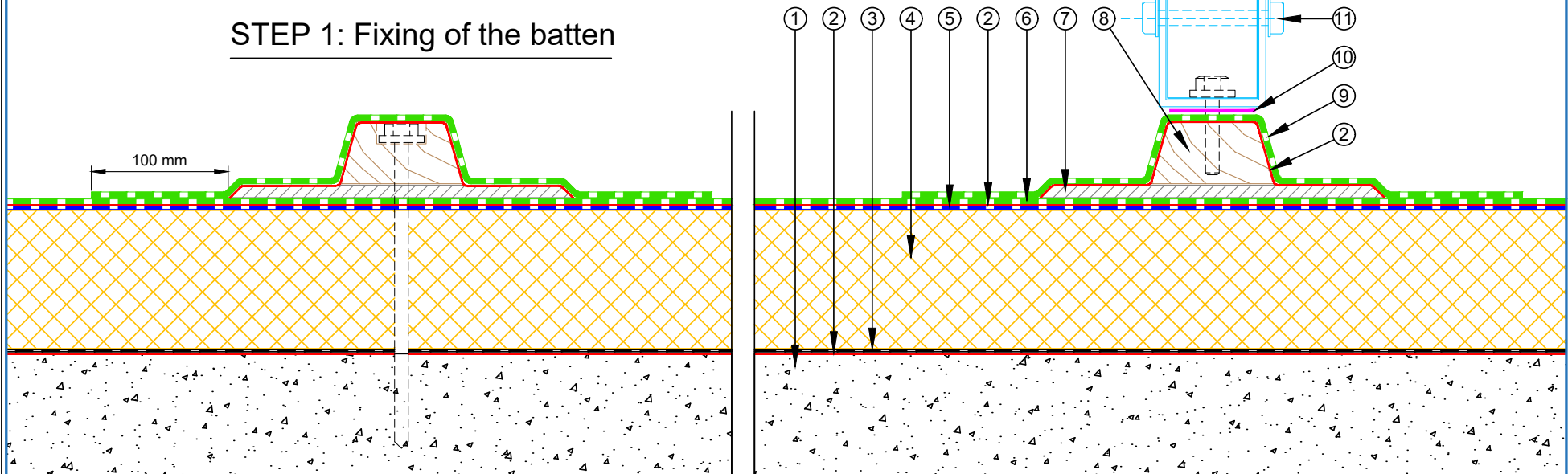


 E-mail : info@equus.nz Web : www.equus.co.nz	PROJECT :		Warm Roof on Concrete Standard Detail - NOVA-SK FLAMELSS SYSTEM		 AUTHORISED DISTRIBUTOR		
	TITLE :		Electrical conduit with roof cover board (PIR insulation)				
	NUMBER :	SNWRCs-D6d	SCALE :	NTS			
	DRAWN BY :	NKT	DATE :	28-Aug-2024		REVISED :	
	Equus Waterproof Membrane Details are specially drawn for use by Local Authorities, Building Contractors, Equus Applicators, Architects and design professionals. All details are drawn to assist in the development of project specific details. Details may be modified where necessary to accommodate job specific requirements but must be approved by Equus Industries Ltd. All components must be supplied by Equus Industries Ltd. Equus reserves the right to alter or upgrade details at any time without prior notice.						

- ① Concrete Roof Slab laid to Fall
- ② EQUUS SOPRADERE QUICK primer
- ③ EQUUS Colphene 3000 Vapour Barrier
- ④ EQUUS PIR thermal insulation
- ⑤ EQUUS NOVA-SK base sheet (self-adhered)
- ⑥ EQUUS NOVA-SK MINERAL cap sheet (self-adhered)
- ⑦ EQUUS Permabase Dek roof cover board
- ⑧ Timber Roof Batten
- ⑨ EQUUS cap sheet as separate piece over Plywood Plinth
- ⑩ EPDM Washer under Screwhead
- ⑪ Roof Equipment

STEP 2: Fixing of the Equipment

STEP 1: Fixing of the batten



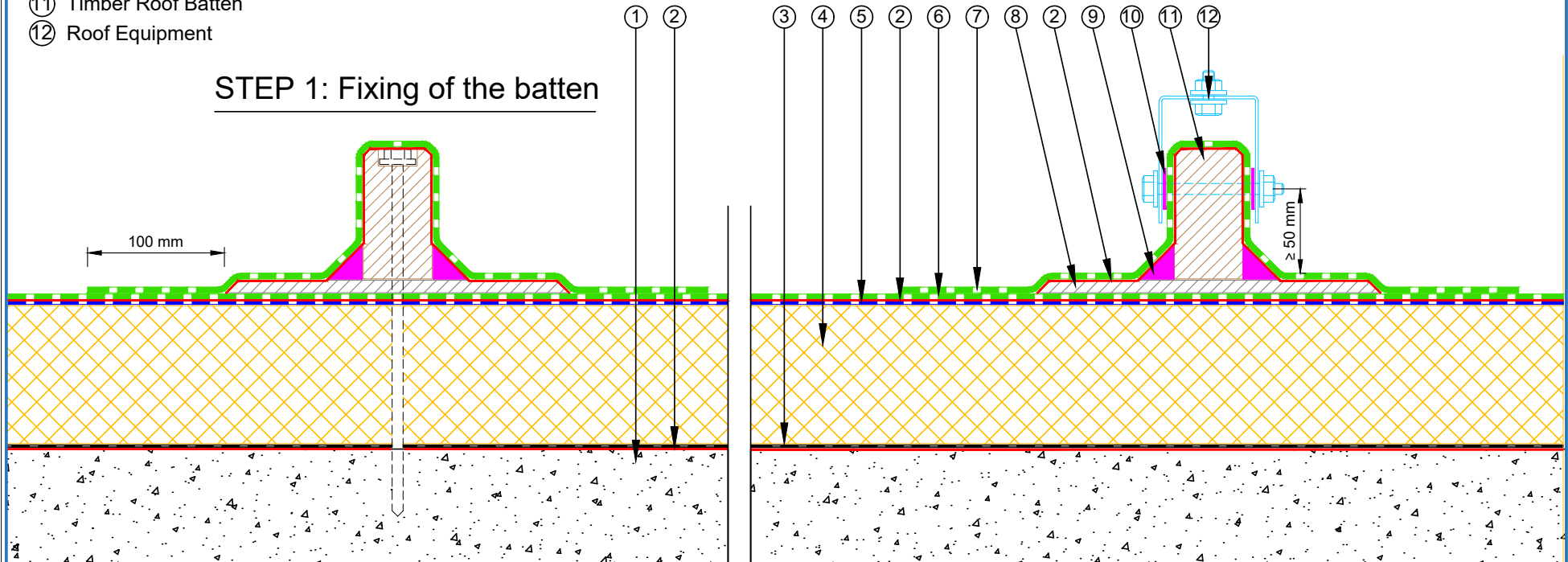
PROJECT :	Warm Roof on Concrete Standard Detail - NOVA-SK FLAMELSS SYSTEM		
TITLE :	Roof Equipment Support Batten (PIR insulation)		
NUMBER :	SNWRCs-D7a	SCALE :	NTS
DRAWN BY :	NKT	DATE :	28-Aug-2024
		REVISED :	

Equus Waterproof Membrane Details are specially drawn for use by Local Authorities, Building Contractors, Equus Applicators, Architects and design professionals. All details are drawn to assist in the development of project specific details. Details may be modified where necessary to accommodate job specific requirements but must be approved by Equus Industries Ltd. All components must be supplied by Equus Industries Ltd. Equus reserves the right to alter or upgrade details at any time without prior notice.

- ① Concrete Roof Slab laid to Fall
- ② EQUUS Peel & Stick primer
- ③ EQUUS Colphene 3000 Vapour Barrier
- ④ EQUUS PIR thermal insulation
- ⑤ EQUUS NOVA-SK base sheet (self-adhered)
- ⑥ EQUUS NOVA-SK MINERAL cap sheet (self-adhered)
- ⑦ EQUUS cap sheet as separate piece over Plywood Plinth
- ⑧ EQUUS Permabase Dek roof cover board
- ⑨ EQUUS bitumen fillet or approved alternative
- ⑩ EPDM Washer under Screwhead
- ⑪ Timber Roof Batten
- ⑫ Roof Equipment

STEP 2: Fixing of the Equipment

STEP 1: Fixing of the batten



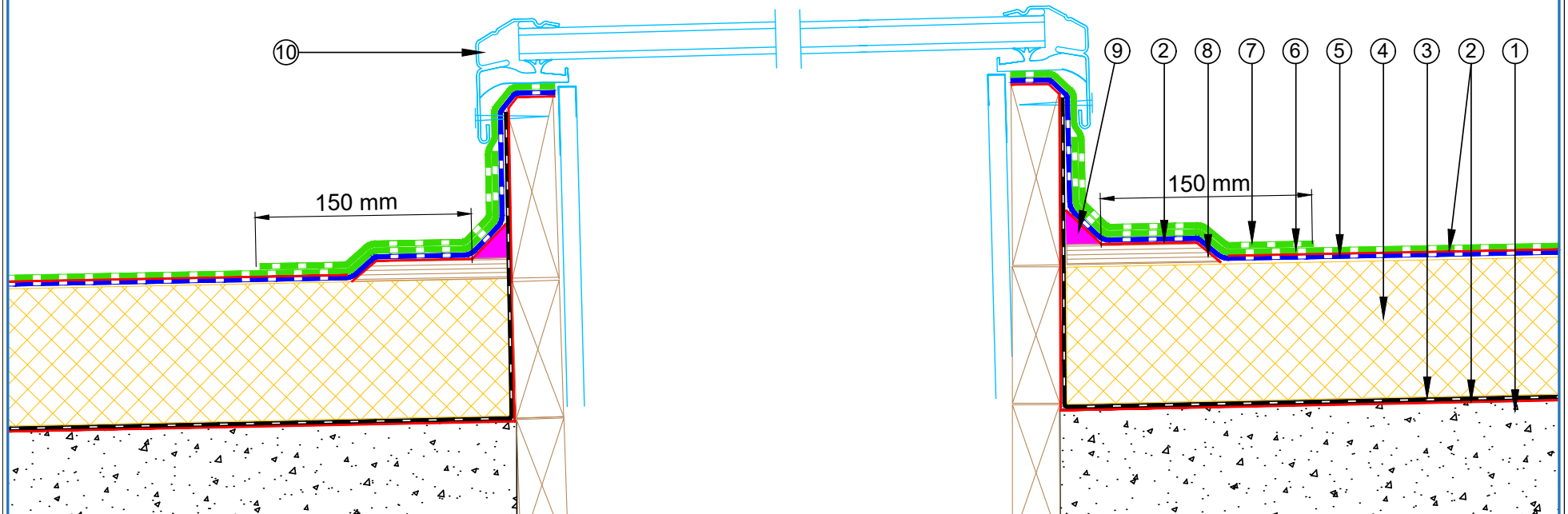
E-mail : info@equus.nz
Web : www.equus.co.nz

PROJECT :	Warm Roof on Concrete Standard Detail - NOVA-SK FLAMELSS SYSTEM		
TITLE :	Roof Equipment Support Batten - optional (PIR insulation)		
NUMBER :	SNWRCs-D7c	SCALE :	NTS
DRAWN BY :	NKT	DATE :	28-Aug-2024
		REVISED :	

Equus Waterproof Membrane Details are specially drawn for use by Local Authorities, Building Contractors, Equus Applicators, Architects and design professionals. All details are drawn to assist in the development of project specific details. Details may be modified where necessary to accommodate job specific requirements but must be approved by Equus Industries Ltd. All components must be supplied by Equus Industries Ltd. Equus reserves the right to alter or upgrade details at any time without prior notice.

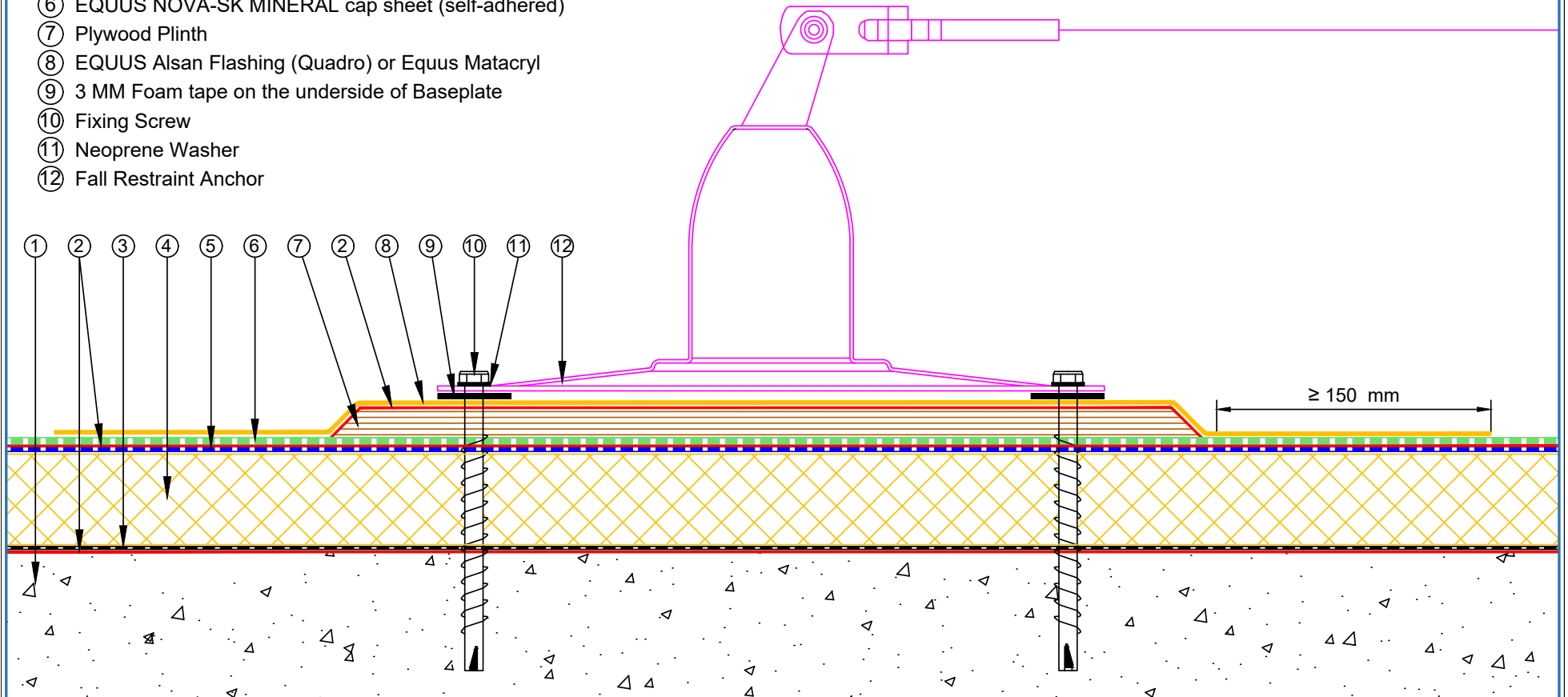


- ① Concrete Roof Slab laid to Fall
- ② EQUUS Peel & Stick primer
- ③ EQUUS Colphene 3000 Vapour Barrier
- ④ EQUUS PIR thermal insulation
- ⑤ EQUUS NOVA-SK base sheet (self-adhered)
- ⑥ EQUUS NOVA-SK MINERAL cap sheet (self-adhered)
- ⑦ EQUUS cap sheet as separate piece over Plywood Plinth
- ⑧ Plywood Plinth
- ⑨ EQUUS bitumen fillet or approved alternative
- ⑩ Skylight Joinery



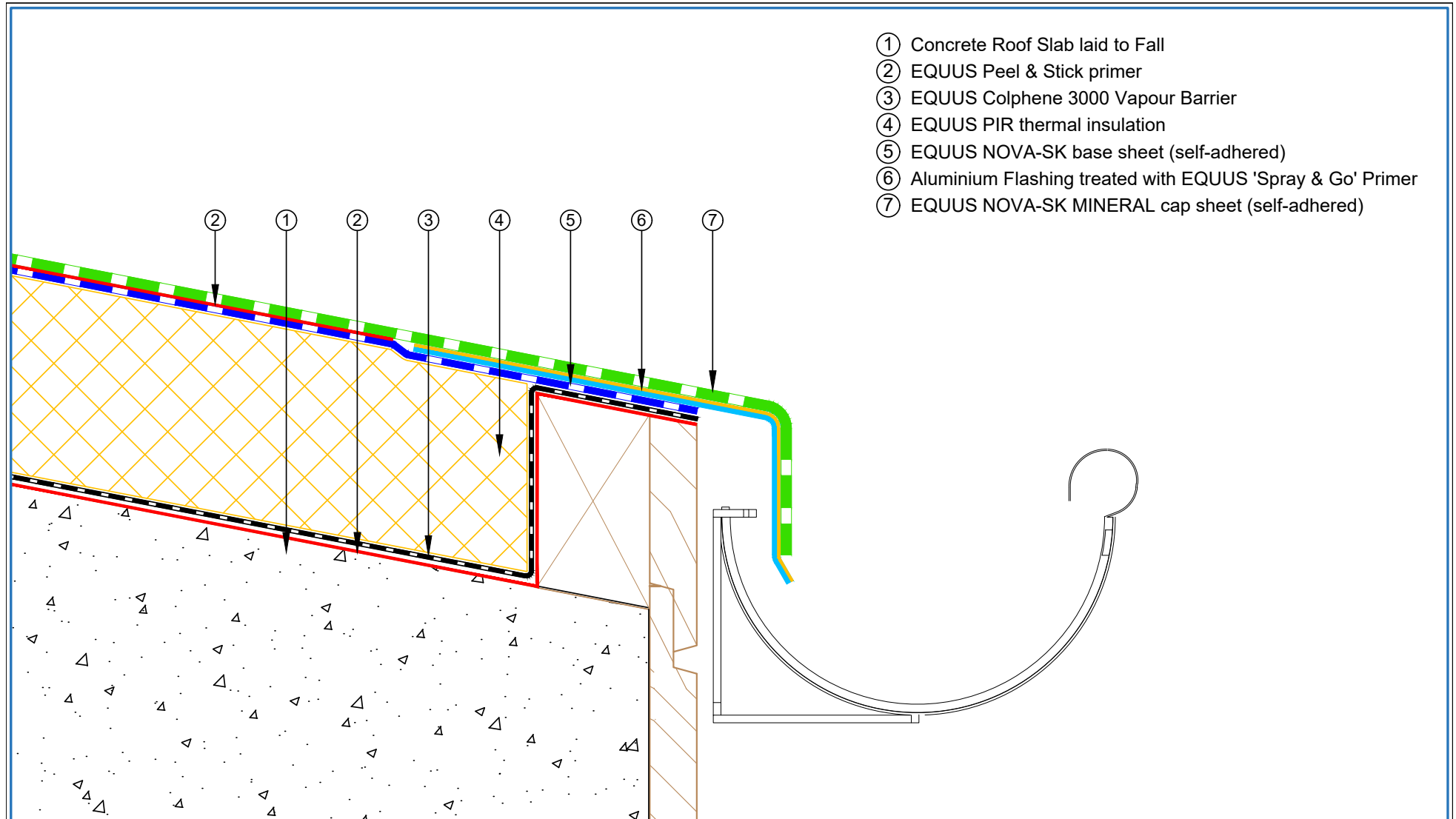
 E-mail : info@equus.nz Web : www.equus.co.nz	PROJECT :		Warm Roof on Concrete Standard Detail - NOVA-SK FLAMELSS SYSTEM	
	TITLE :		Skylight (PIR insulation)	
	NUMBER :	SNWRCs-D8a	SCALE :	NTS
	DRAWN BY :	NKT	DATE :	28-Aug-2024
			REVISED :	
Equus Waterproof Membrane Details are specially drawn for use by Local Authorities, Building Contractors, Equus Applicators, Architects and design professionals. All details are drawn to assist in the development of project specific details. Details may be modified where necessary to accommodate job specific requirements but must be approved by Equus Industries Ltd. All components must be supplied by Equus Industries Ltd. Equus reserves the right to alter or upgrade details at any time without prior notice.				
			 AUTHORISED DISTRIBUTOR SOPREMA	

- ① Concrete Roof Slab laid to Fall
- ② EQUUS Peel & Stick primer
- ③ EQUUS Colphene 3000 Vapour Barrier
- ④ EQUUS PIR thermal insulation
- ⑤ EQUUS NOVA-SK base sheet (self-adhered)
- ⑥ EQUUS NOVA-SK MINERAL cap sheet (self-adhered)
- ⑦ Plywood Plinth
- ⑧ EQUUS Alsan Flashing (Quadro) or Equus Maticryl
- ⑨ 3 MM Foam tape on the underside of Baseplate
- ⑩ Fixing Screw
- ⑪ Neoprene Washer
- ⑫ Fall Restraint Anchor



PROJECT :	Warm Roof on Concrete Standard Detail - NOVA-SK FLAMELSS SYSTEM		
TITLE :	Fall restraint (PIR insulation)		
NUMBER :	SNWRCs-D9a	SCALE :	NTS
DRAWN BY :	NKT	DATE :	28-Aug-2024
		REVISED :	
<p><small>Equus Waterproof Membrane Details are specially drawn for use by Local Authorities, Building Contractors, Equus Applicators, Architects and design professionals. All details are drawn to assist in the development of project specific details. Details may be modified where necessary to accommodate job specific requirements but must be approved by Equus Industries Ltd. All components must be supplied by Equus Industries Ltd. Equus reserves the right to alter or upgrade details at any time without prior notice.</small></p>			





- ① Concrete Roof Slab laid to Fall
- ② EQUUS Peel & Stick primer
- ③ EQUUS Colphene 3000 Vapour Barrier
- ④ EQUUS PIR thermal insulation
- ⑤ EQUUS NOVA-SK base sheet (self-adhered)
- ⑥ Aluminium Flashing treated with EQUUS 'Spray & Go' Primer
- ⑦ EQUUS NOVA-SK MINERAL cap sheet (self-adhered)

E-mail : info@equus.nz
Web : www.equus.co.nz

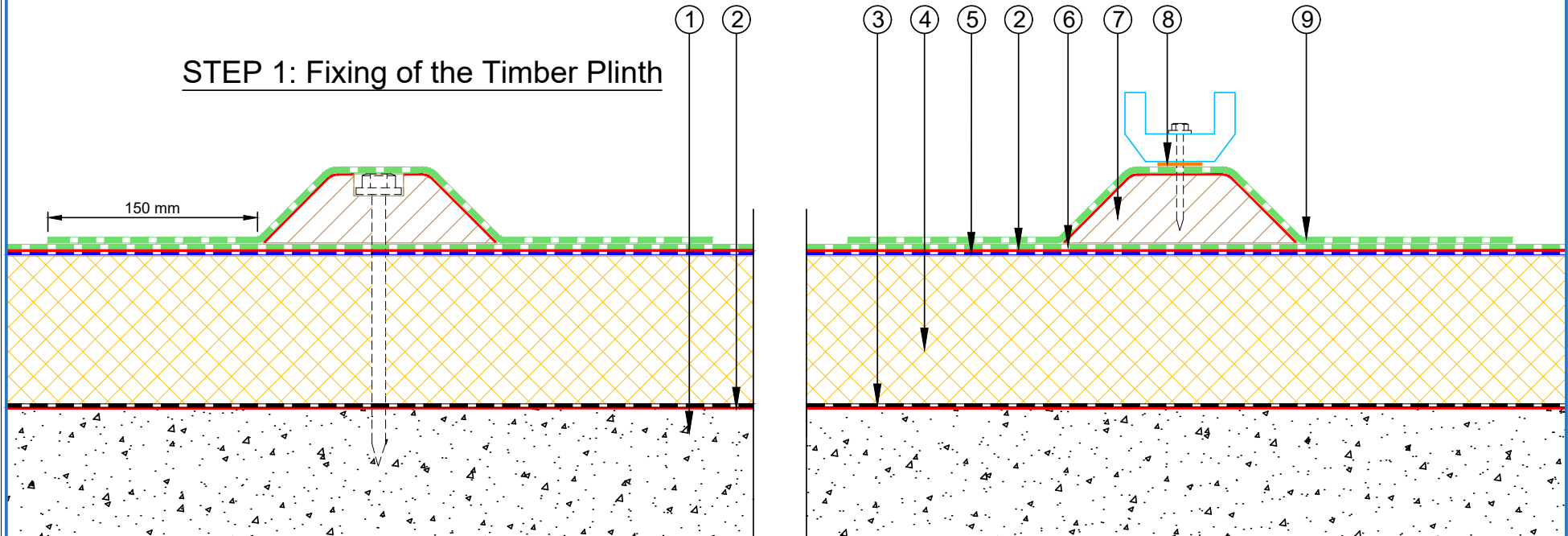
PROJECT :	Warm Roof on Concrete Standard Detail - NOVA-SK FLAMELESS SYSTEM		
TITLE :	Connection to External Gutter (PIR insulation)		
NUMBER :	SNWRCs-D10a	SCALE :	NTS
DRAWN BY :	NKT	DATE :	28-Aug-2024
		REVISED :	
<p><small>Equus Waterproof Membrane Details are specially drawn for use by Local Authorities, Building Contractors, Equus Applicators, Architects and design professionals. All details are drawn to assist in the development of project specific details. Details may be modified where necessary to accommodate job specific requirements but must be approved by Equus Industries Ltd. All components must be supplied by Equus Industries Ltd. Equus reserves the right to alter or upgrade details at any time without prior notice.</small></p>			

AUTHORISED DISTRIBUTOR
SOPREMA

- ① Concrete Roof Slab laid to Fall
- ② EQUUS Peel & Stick primer
- ③ EQUUS Colphene 3000 Vapour Barrier
- ④ EQUUS PIR thermal insulation
- ⑤ EQUUS NOVA-SK base sheet (self-adhered)
- ⑥ EQUUS NOVA-SK MINERAL cap sheet (self-adhered)
- ⑦ Plywood Plinth
- ⑧ Monkey Toe Roof Profile Fixing with Neoprene Washer
- ⑨ EQUUS cap sheet as separate piece over Plywood Plinth

STEP 2: Fixing of the Monkey Toe Roof Profile

STEP 1: Fixing of the Timber Plinth



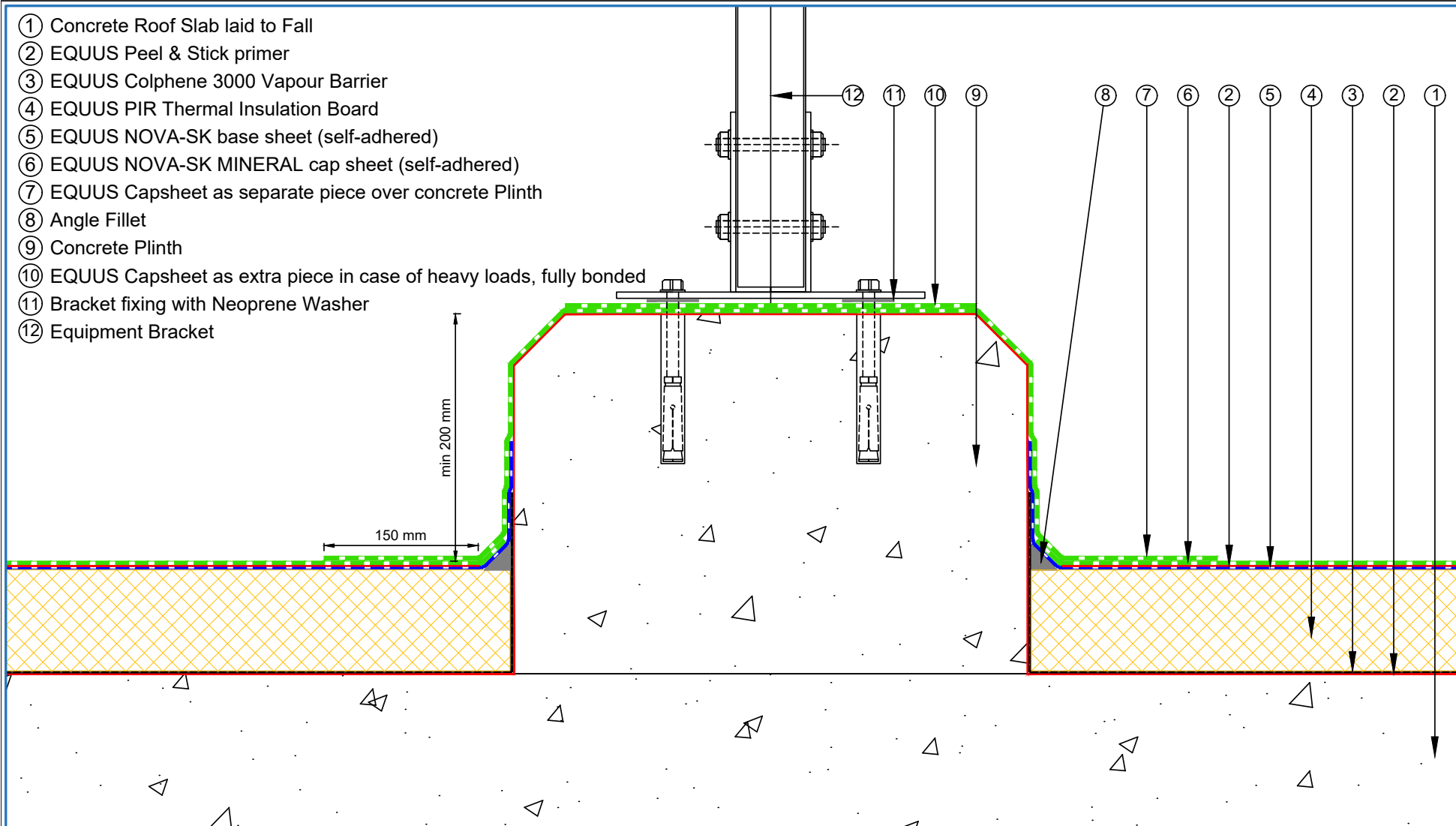
E-mail : info@equus.nz
Web : www.equus.co.nz

PROJECT :	Warm Roof on Concrete Standard Detail - NOVA-SK FLAMELSS SYSTEM		
TITLE :	Monkey Toe Walkway Fixing Detail - optional (PIR insulation)		
NUMBER :	SNWRCs-D11a	SCALE :	NTS
DRAWN BY :	NKT	DATE :	28-Aug-2024
		REVISED :	

Equus Waterproof Membrane Details are specially drawn for use by Local Authorities, Building Contractors, Equus Applicators, Architects and design professionals. All details are drawn to assist in the development of project specific details. Details may be modified where necessary to accommodate job specific requirements but must be approved by Equus Industries Ltd. All components must be supplied by Equus Industries Ltd. Equus reserves the right to alter or upgrade details at any time without prior notice.



- ① Concrete Roof Slab laid to Fall
- ② EQUUS Peel & Stick primer
- ③ EQUUS Colphene 3000 Vapour Barrier
- ④ EQUUS PIR Thermal Insulation Board
- ⑤ EQUUS NOVA-SK base sheet (self-adhered)
- ⑥ EQUUS NOVA-SK MINERAL cap sheet (self-adhered)
- ⑦ EQUUS Capsheet as separate piece over concrete Plinth
- ⑧ Angle Fillet
- ⑨ Concrete Plinth
- ⑩ EQUUS Capsheet as extra piece in case of heavy loads, fully bonded
- ⑪ Bracket fixing with Neoprene Washer
- ⑫ Equipment Bracket



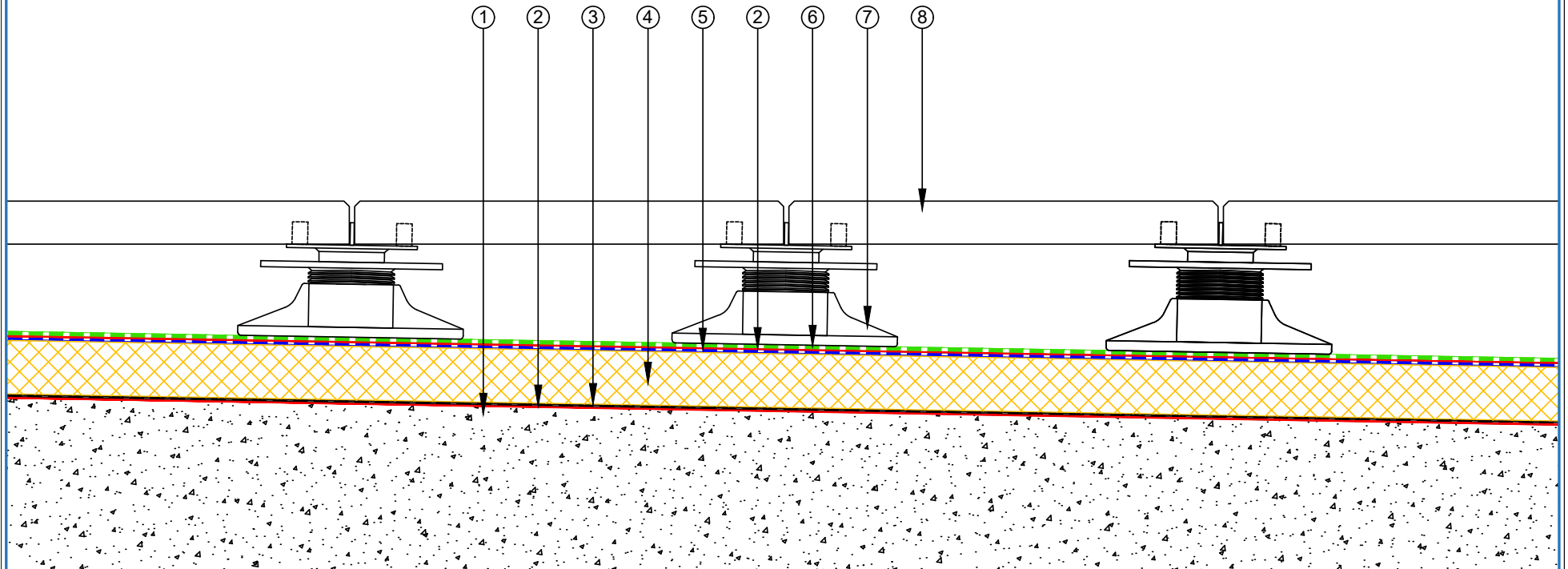
E-mail : info@equus.nz
Web : www.equus.co.nz


PROJECT :	Warm Roof on Concrete Standard Detail - NOVA-SK FLAMELSS SYSTEM		
TITLE :	Concrete Footing for Heavy Equipment (PIR insulation)		
NUMBER :	SNWRCs-D12a	SCALE :	NTS
DRAWN BY :	NKT	DATE :	28-Aug-2024
REVISED :			

Equus Waterproof Membrane Details are specially drawn for use by Local Authorities, Building Contractors, Equus Applicators, Architects and design professionals. All details are drawn to assist in the development of project specific details. Details may be modified where necessary to accommodate job specific requirements but must be approved by Equus Industries Ltd. All components must be supplied by Equus Industries Ltd. Equus reserves the right to alter or upgrade details at any time without prior notice.



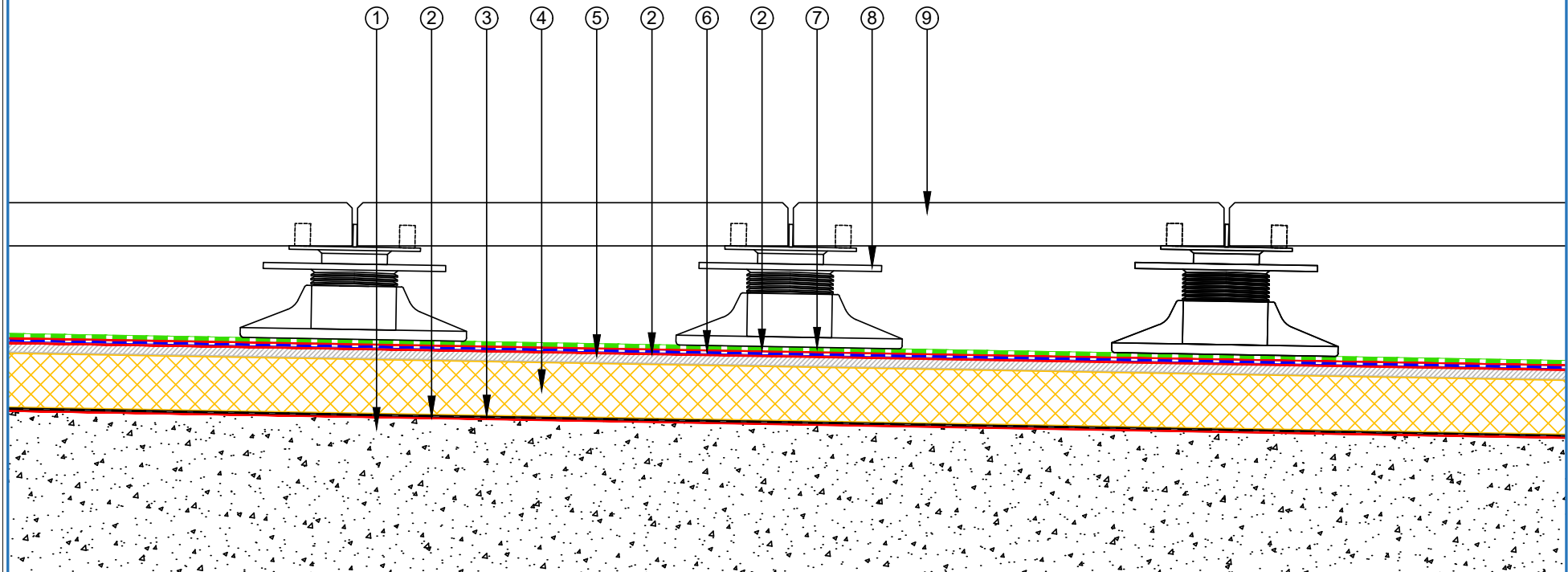
- ① Concrete Roof Slab laid to Fall
- ② EQUUS Peel & Stick primer
- ③ EQUUS Colphene 3000 Vapour Barrier
- ④ EQUUS PIR thermal insulation
- ⑤ EQUUS NOVA-SK base sheet (self-adhered)
- ⑥ EQUUS NOVA-SK MINERAL cap sheet (self-adhered)
- ⑦ EQUUS FixPlus pedestals
- ⑧ Pavers



 E-mail : info@equus.nz Web : www.equus.co.nz	PROJECT :	Warm Roof on Concrete Standard Detail - NOVA-SK FLAMELSS SYSTEM		
	TITLE :	Pavers on EQUUS FixPlus pedestals (PIR insulation)		
	NUMBER :	SNWRCs-D13a	SCALE :	NTS
	DRAWN BY :	NKT	DATE :	28-Aug-2024
		REVISED :		
Equus Waterproof Membrane Details are specially drawn for use by Local Authorities, Building Contractors, Equus Applicators, Architects and design professionals. All details are drawn to assist in the development of project specific details. Details may be modified where necessary to accommodate job specific requirements but must be approved by Equus Industries Ltd. All components must be supplied by Equus Industries Ltd. Equus reserves the right to alter or upgrade details at any time without prior notice.				

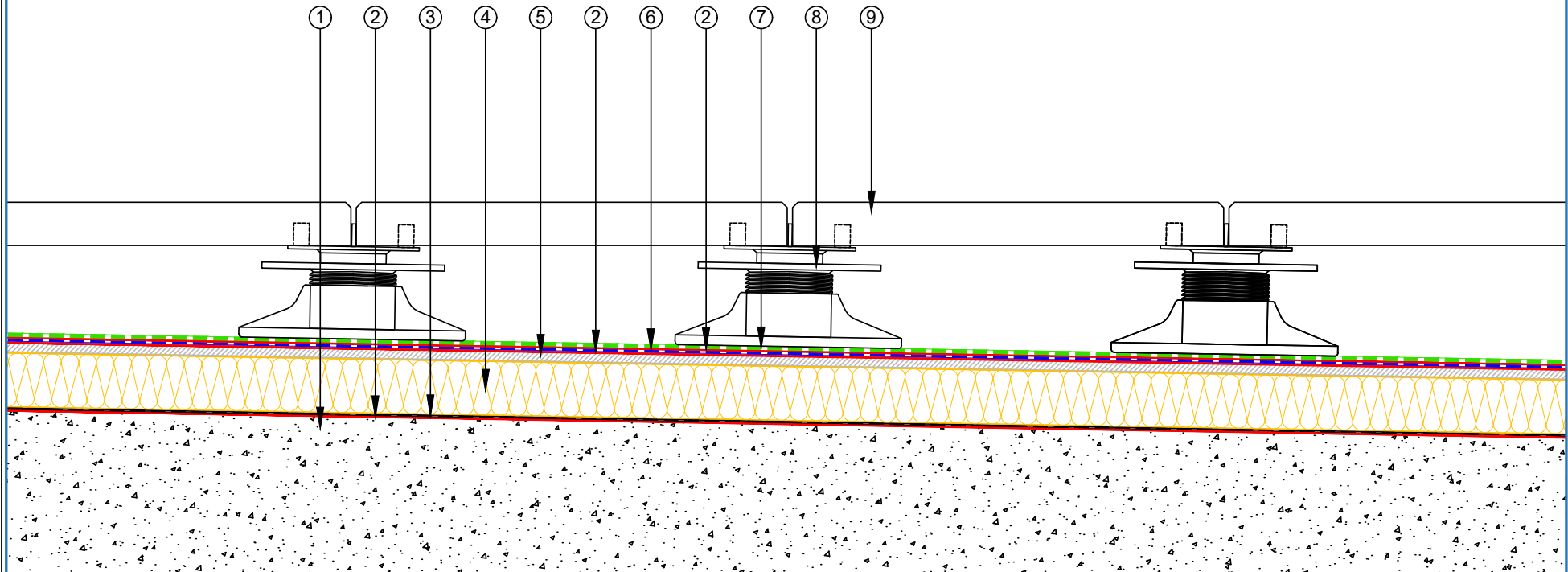


- ① Concrete Roof Slab laid to Fall
- ② EQUUS Peel & Stick primer
- ③ EQUUS Colphene 3000 Vapour Barrier
- ④ EQUUS PIR thermal insulation
- ⑤ EQUUS Permabase Dek roof cover board
- ⑥ EQUUS NOVA-SK base sheet (self-adhered)
- ⑦ EQUUS NOVA-SK MINERAL cap sheet (self-adhered)
- ⑧ EQUUS FixPlus pedestals
- ⑨ Pavers



 E-mail : info@equus.nz Web : www.equus.co.nz	PROJECT :		Warm Roof on Concrete Standard Detail - NOVA-SK FLAMELSS SYSTEM		 AUTHORISED DISTRIBUTOR		
	TITLE :		Pavers on EQUUS FixPlus pedestals (PIR insulation)				
	NUMBER :		SNWRCs-D13b	SCALE :		NTS	
	DRAWN BY :		NKT	DATE :		28-Aug-2024	REVISED :
	Equus Waterproof Membrane Details are specially drawn for use by Local Authorities, Building Contractors, Equus Applicators, Architects and design professionals. All details are drawn to assist in the development of project specific details. Details may be modified where necessary to accommodate job specific requirements but must be approved by Equus Industries Ltd. All components must be supplied by Equus Industries Ltd. Equus reserves the right to alter or upgrade details at any time without prior notice.						

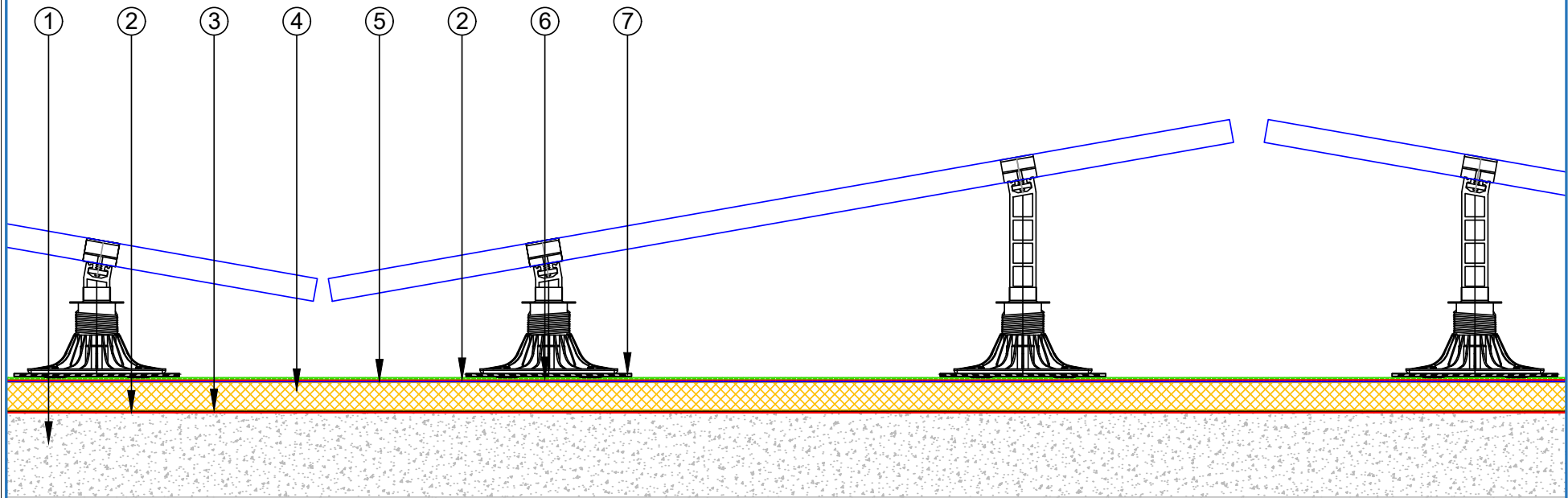
- ① Concrete Roof Slab laid to Fall
- ② EQUUS Peel & Stick primer
- ③ EQUUS Colphene 3000 Vapour Barrier
- ④ EQUUS SOPRAROCK mineral wool thermal insulation
- ⑤ EQUUS Permabase Dek roof cover board
- ⑥ EQUUS NOVA-SK base sheet (self-adhered)
- ⑦ EQUUS NOVA-SK MINERAL cap sheet (self-adhered)
- ⑧ EQUUS FixPlus pedestals
- ⑨ Pavers



 E-mail : info@equus.nz Web : www.equus.co.nz	PROJECT :	Warm Roof on Concrete Standard Detail - NOVA-SK FLAMELSS SYSTEM		
	TITLE :	Pavers on EQUUS FixPlus pedestals (Mineral wool insulation)		
	NUMBER :	SNWRCs-D13c	SCALE :	NTS
	DRAWN BY :	NKT	DATE :	28-Aug-2024
			REVISED :	
<p><small>Equus Waterproof Membrane Details are specially drawn for use by Local Authorities, Building Contractors, Equus Applicators, Architects and design professionals. All details are drawn to assist in the development of project specific details. Details may be modified where necessary to accommodate job specific requirements but must be approved by Equus Industries Ltd. All components must be supplied by Equus Industries Ltd. Equus reserves the right to alter or upgrade details at any time without prior notice.</small></p>				



- ① Concrete Roof Slab laid to Fall
- ② EQUUS Peel & Stick primer
- ③ EQUUS Colphene 3000 Vapour Barrier
- ④ EQUUS PIR thermal insulation
- ⑤ EQUUS NOVA-SK base sheet (self-adhered)
- ⑥ EQUUS NOVA-SK MINERAL cap sheet (self-adhered)
- ⑦ EQUUS SOPREMA SOPRASOLAR® FIX EVO TILT



PROJECT :	Warm Roof on Concrete Standard Detail - NOVA-SK FLAMELSS SYSTEM		
TITLE :	Roof build up with SOPRASOLAR		
NUMBER :	SNWRCs-D14a	SCALE :	NTS
DRAWN BY :	NKT	DATE :	28-Aug-2024
		REVISED :	
<p><small>Equus Waterproof Membrane Details are specially drawn for use by Local Authorities, Building Contractors, Equus Applicators, Architects and design professionals. All details are drawn to assist in the development of project specific details. Details may be modified where necessary to accommodate job specific requirements but must be approved by Equus Industries Ltd. All components must be supplied by Equus Industries Ltd. Equus reserves the right to alter or upgrade details at any time without prior notice.</small></p>			

