

EQUUS SOPREMA NOVA-SK MEMBRANE SYSTEM

Standard Details on Plywood Substrate



CELEBRATING
40 YEARS
1982-2022

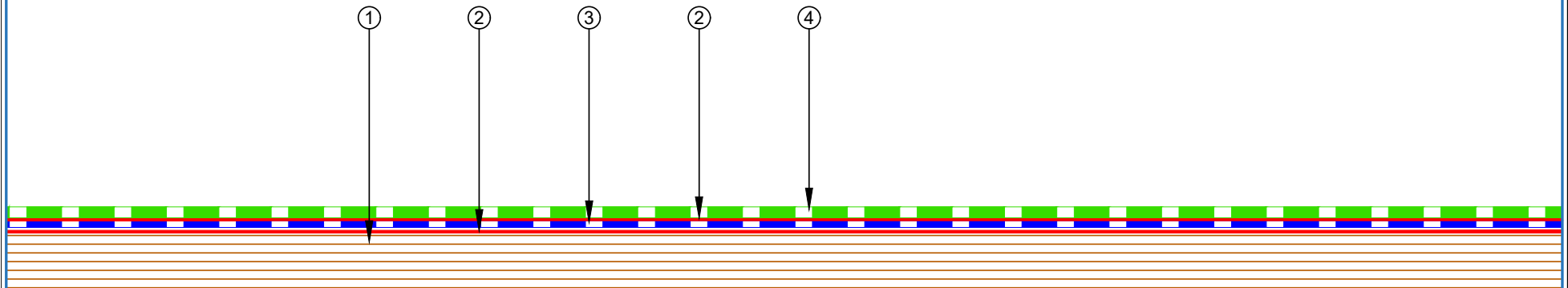


SEPTEMBER 2024

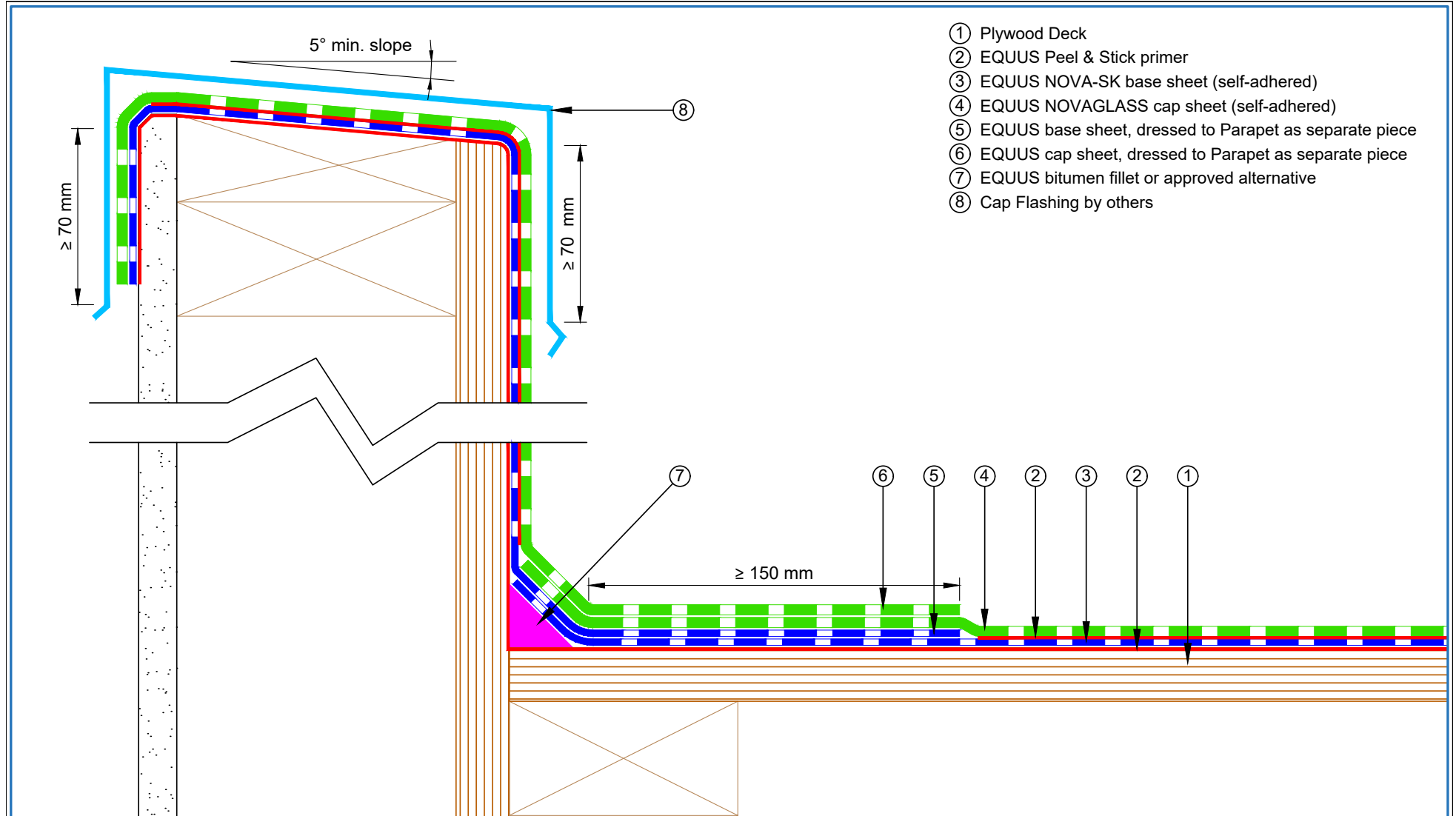
CONTENTS

SNCRPs-D0a	Roof Built Up	1	SNCRPs-D9a	Scupper Drain	16
SNCRPs-D1a	Parapet with Cap Flashing	2	SNCRPs-D9b	Aquaknight Scupper	17
SNCRPs-D2a	Allproof Dome Clamp Ring Drain	3	SNCRPs-D10a	Upstand with Roof Edge Profile	18
SNCRPs-D2b	Aquaknight HiFlow Roof Drain	4	SNCRPs-D11a	Ventilation Pipe with Plinth	19
SNCRPs-D3a	Internal Gutter and Parapet – Allproof Drain	5	SNCRPs-D12a	Monkey Toe Walkway Fixing	20
SNCRPs-D3b	Internal Gutter and Parapet – Aquaknight	6	SNCRPs-D13a	Electrical Conduit	21
SNCRPs-D3c	Internal Center Gutter	7	SNCRPs-D14a	Cable Tray Support Fixing	22
SNCRPs-D4a	Pipe Penetration	8	SNCRPs-D15a	Window Gutter	23
SNCRPs-D4b	Pipe Penetration with Shrink Sleeve	9	SNCRPs-D17a	Verge Detail Without Upstand	24
SNCRPs-D5a	Roof Equipment Support Batten	10	SNCRPs-D18a	Pipe Penetration Solar PV Power	25
SNCRPs-D5b	Roof Equipment Support Batten (Optional)	11	SNCRPs-D19a	Ridge Waterproofing	26
SNCRPs-D6a	Skylight Roof Hatch with Extra Cap Sheet	12	SNCRPs-D20a	Roof Edge	27
SNCRPs-D6b	Skylight Roof Hatch with Divertor	13	SNCRPs-D24a	Saddle Flashing	28
SNCRPs-D7a	Fall Restraint	14			
SNCRPs-D8a	Connection to External Gutter	15			

- ① Plywood Deck
- ② EQUUS Peel & Stick primer
- ③ EQUUS NOVA-SK base sheet (self-adhered)
- ④ EQUUS NOVAGLASS cap sheet (self-adhered)



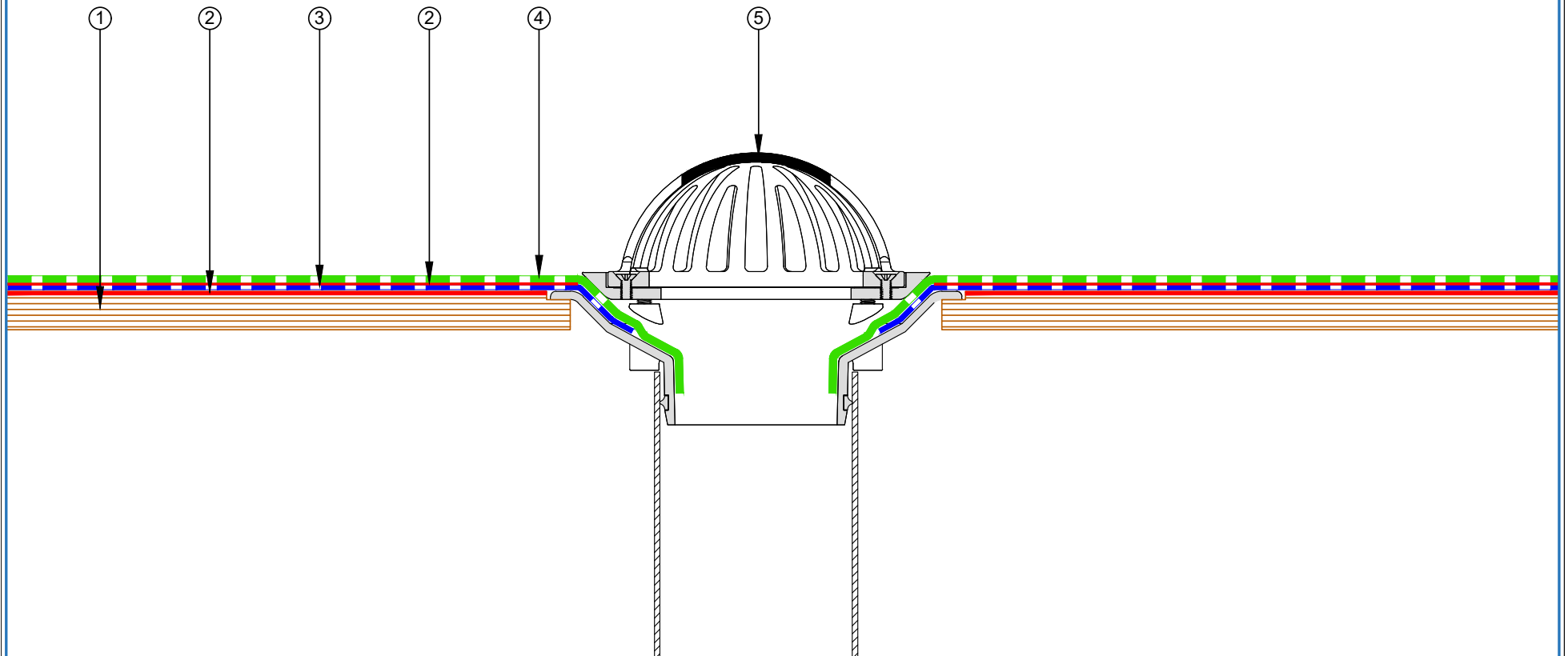
 E-mail : info@equus.nz Web : www.equus.co.nz	PROJECT :		Cold Roof on Plywood Standard Detail - NOVA-SK FLAMELESS SYSTEM			
	TITLE :		Roof Built Up Detail			
	NUMBER :		SNCRPs-D0a		SCALE :	NTS
	DRAWN BY :		NKT	DATE :	20-Aug-2024	REVISED :
	<p><small>Equus Waterproof Membrane Details are specially drawn for use by Local Authorities, Building Contractors, Equus Applicators, Architects and design professionals. All details are drawn to assist in the development of project specific details. Details may be modified where necessary to accommodate job specific requirements but must be approved by Equus Industries Ltd. All components must be supplied by Equus Industries Ltd. Equus reserves the right to alter or upgrade details at any time without prior notice.</small></p>					



- ① Plywood Deck
- ② EQUUS Peel & Stick primer
- ③ EQUUS NOVA-SK base sheet (self-adhered)
- ④ EQUUS NOVAGLASS cap sheet (self-adhered)
- ⑤ EQUUS base sheet, dressed to Parapet as separate piece
- ⑥ EQUUS cap sheet, dressed to Parapet as separate piece
- ⑦ EQUUS bitumen fillet or approved alternative
- ⑧ Cap Flashing by others

 E-mail : info@equus.nz Web : www.equus.co.nz	PROJECT :		Cold Roof on Plywood Standard Detail - NOVA-SK FLAMELESS SYSTEM	
	TITLE :		Parapet with cap flashing	
	NUMBER :	SNCRPs-D1a	SCALE :	NTS
	DRAWN BY :	NKT	DATE :	20-Aug-2024
	REVISD :			
Equus Waterproof Membrane Details are specially drawn for use by Local Authorities, Building Contractors, Equus Applicators, Architects and design professionals. All details are drawn to assist in the development of project specific details. Details may be modified where necessary to accommodate job specific requirements but must be approved by Equus Industries Ltd. All components must be supplied by Equus Industries Ltd. Equus reserves the right to alter or upgrade details at any time without prior notice.				

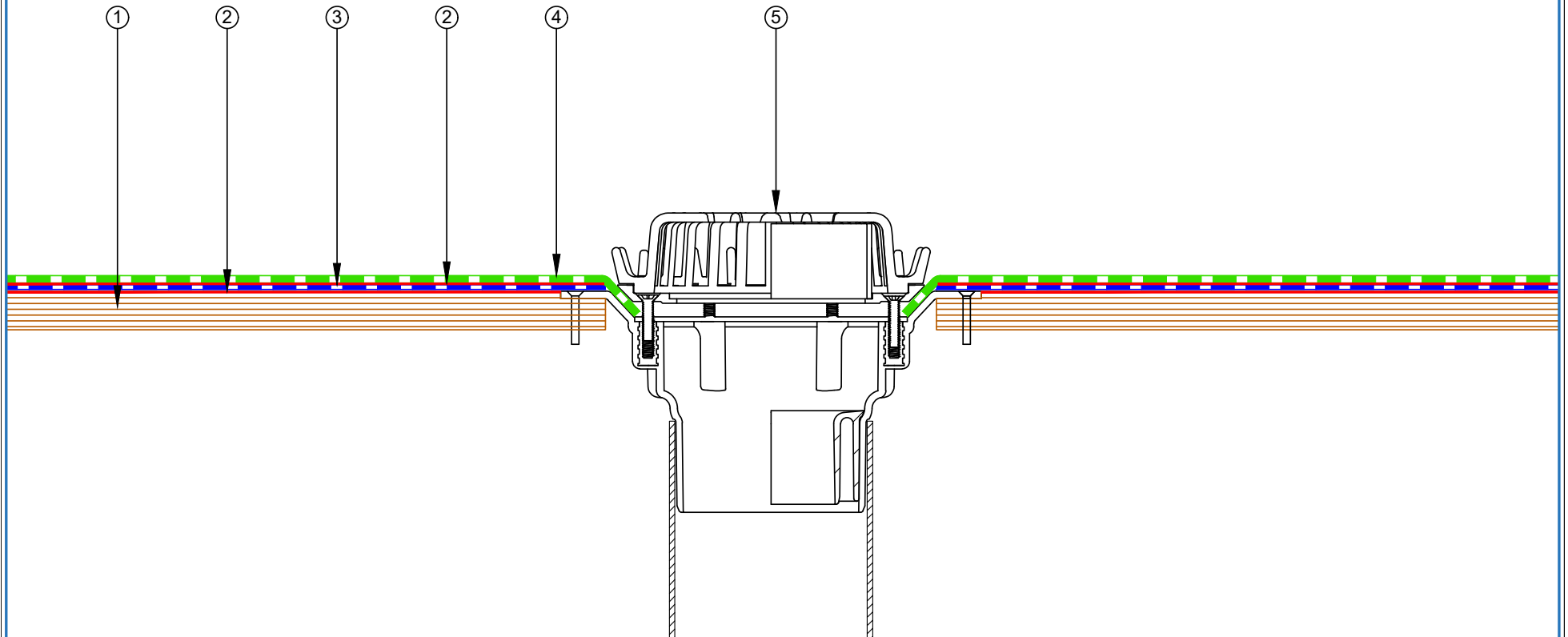
- ① Plywood Deck
- ② EQUUS Peel & Stick primer
- ③ EQUUS NOVA-SK base sheet (self-adhered)
- ④ EQUUS NOVAGLASS cap sheet (self-adhered)
- ⑤ Allproof Dome Clamp Ring Drain



PROJECT :	Cold Roof on Plywood Standard Detail - NOVA-SK FLAMELESS SYSTEM		
TITLE :	Allproof dome clamp ring drain		
NUMBER :	SNCRPs-D2a	SCALE :	NTS
DRAWN BY :	NKT	DATE :	20-Aug-2024
		REVISED :	
<p><small>Equus Waterproof Membrane Details are specially drawn for use by Local Authorities, Building Contractors, Equus Applicators, Architects and design professionals. All details are drawn to assist in the development of project specific details. Details may be modified where necessary to accommodate job specific requirements but must be approved by Equus Industries Ltd. All components must be supplied by Equus Industries Ltd. Equus reserves the right to alter or upgrade details at any time without prior notice.</small></p>			

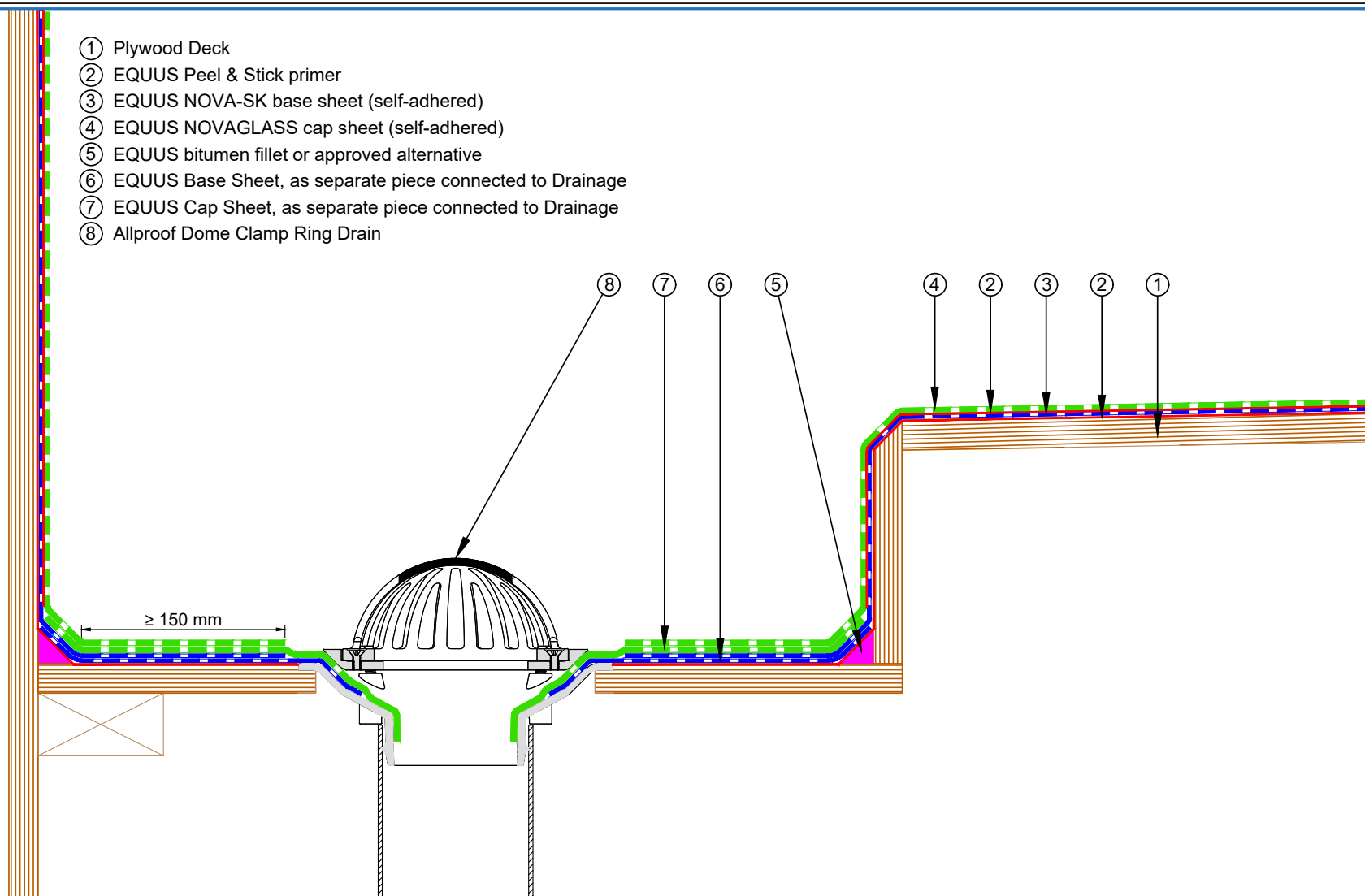


- ① Plywood Deck
- ② EQUUS Peel & Stick primer
- ③ EQUUS NOVA-SK base sheet (self-adhered)
- ④ EQUUS NOVAGLASS cap sheet (self-adhered)
- ⑤ Aquaknight HiFlow roof drain



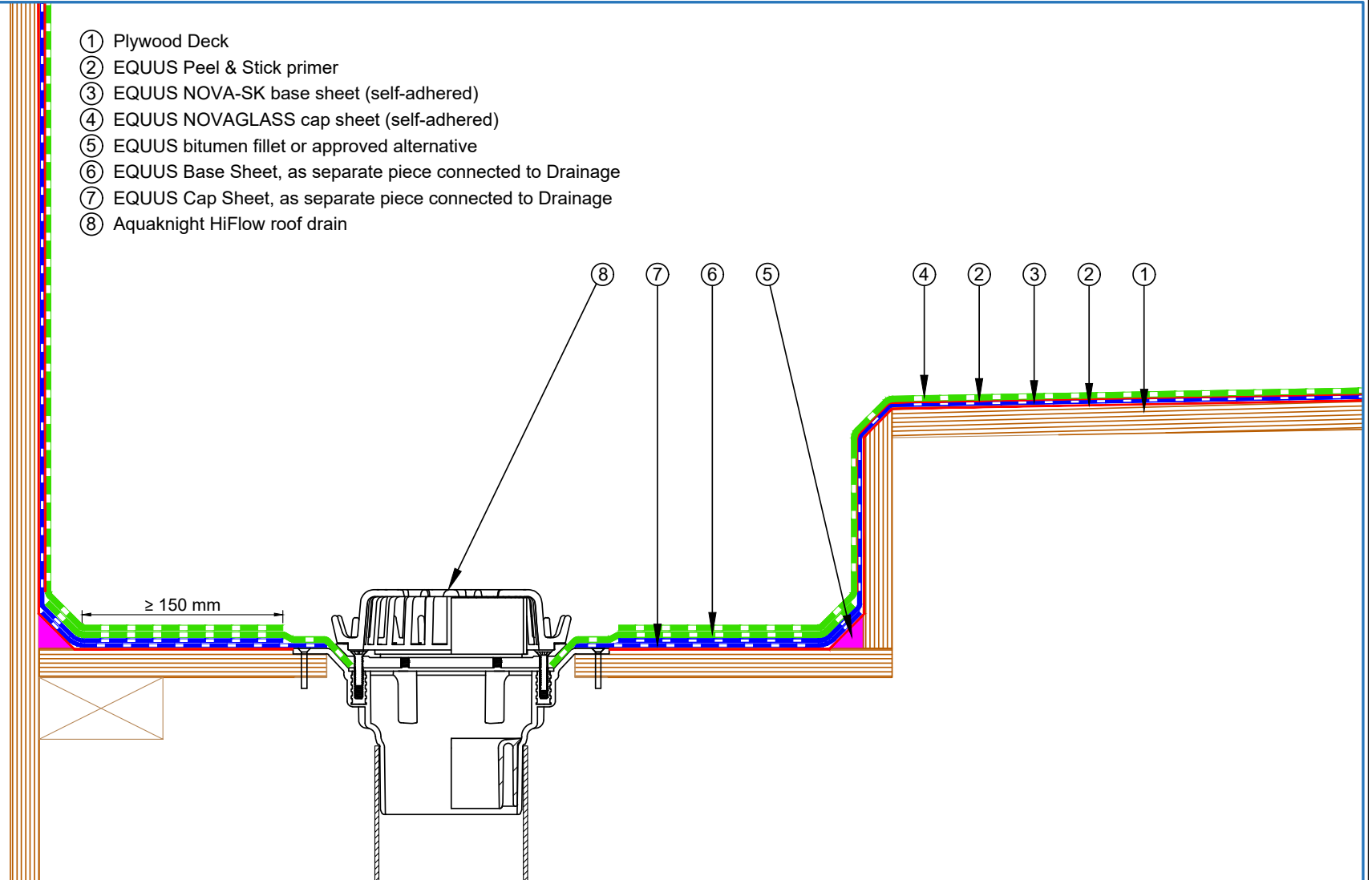
PROJECT :	Cold Roof on Plywood Standard Detail - NOVA-SK FLAMELESS SYSTEM		
TITLE :	Aquaknight HiFlow roof drain		
NUMBER :	SNCRPs-D2b	SCALE :	NTS
DRAWN BY :	NKT	DATE :	20-Aug-2024
		REVISED :	
<p>Equus Waterproof Membrane Details are specially drawn for use by Local Authorities, Building Contractors, Equus Applicators, Architects and design professionals. All details are drawn to assist in the development of project specific details. Details may be modified where necessary to accommodate job specific requirements but must be approved by Equus Industries Ltd. All components must be supplied by Equus Industries Ltd. Equus reserves the right to alter or upgrade details at any time without prior notice.</p>			

- ① Plywood Deck
- ② EQUUS Peel & Stick primer
- ③ EQUUS NOVA-SK base sheet (self-adhered)
- ④ EQUUS NOVAGLASS cap sheet (self-adhered)
- ⑤ EQUUS bitumen fillet or approved alternative
- ⑥ EQUUS Base Sheet, as separate piece connected to Drainage
- ⑦ EQUUS Cap Sheet, as separate piece connected to Drainage
- ⑧ Allproof Dome Clamp Ring Drain



<p>E-mail : info@equus.nz Web : www.equus.co.nz</p>	PROJECT :		Cold Roof on Plywood Standard Detail - NOVA-SK FLAMELESS SYSTEM		
	TITLE :		Internal Gutter and parapet - Allproof drain		
	NUMBER :		SNCRPs-D3a	SCALE :	NTS
	DRAWN BY :		NKT	DATE :	20-Aug-2024
				REVISED :	
<p><small>Equus Waterproof Membrane Details are specially drawn for use by Local Authorities, Building Contractors, Equus Applicators, Architects and design professionals. All details are drawn to assist in the development of project specific details. Details may be modified where necessary to accommodate job specific requirements but must be approved by Equus Industries Ltd. All components must be supplied by Equus Industries Ltd. Equus reserves the right to alter or upgrade details at any time without prior notice.</small></p>					
			<p>AUTHORISED DISTRIBUTOR</p>		

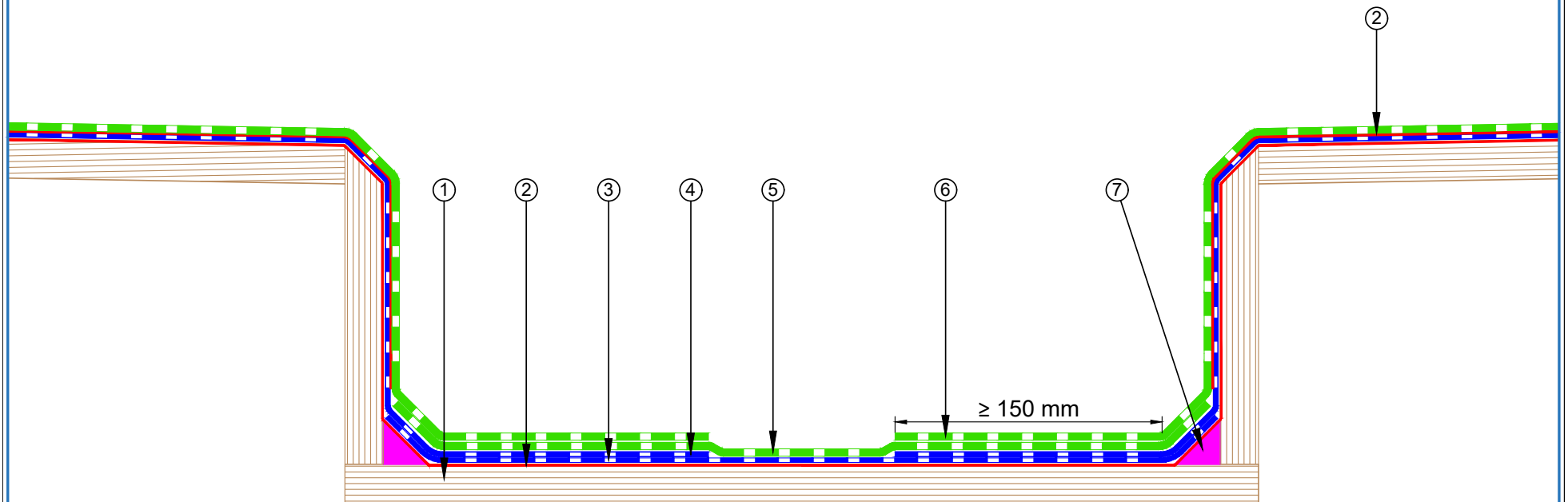
- ① Plywood Deck
- ② EQUUS Peel & Stick primer
- ③ EQUUS NOVA-SK base sheet (self-adhered)
- ④ EQUUS NOVAGLASS cap sheet (self-adhered)
- ⑤ EQUUS bitumen fillet or approved alternative
- ⑥ EQUUS Base Sheet, as separate piece connected to Drainage
- ⑦ EQUUS Cap Sheet, as separate piece connected to Drainage
- ⑧ Aquaknight HiFlow roof drain



PROJECT :	Cold Roof on Plywood Standard Detail - NOVA-SK FLAMELESS SYSTEM			
TITLE :	Internal Gutter and parapet - Aquaknight HiFlow roof drain			
NUMBER :	SDCRPs-D3b		SCALE :	NTS
DRAWN BY :	NKT	DATE :	20-Aug-2024	REVISED :
Equus Waterproof Membrane Details are specially drawn for use by Local Authorities, Building Contractors, Equus Applicators, Architects and design professionals. All details are drawn to assist in the development of project specific details. Details may be modified where necessary to accommodate job specific requirements but must be approved by Equus Industries Ltd. All components must be supplied by Equus Industries Ltd. Equus reserves the right to alter or upgrade details at any time without prior notice.				



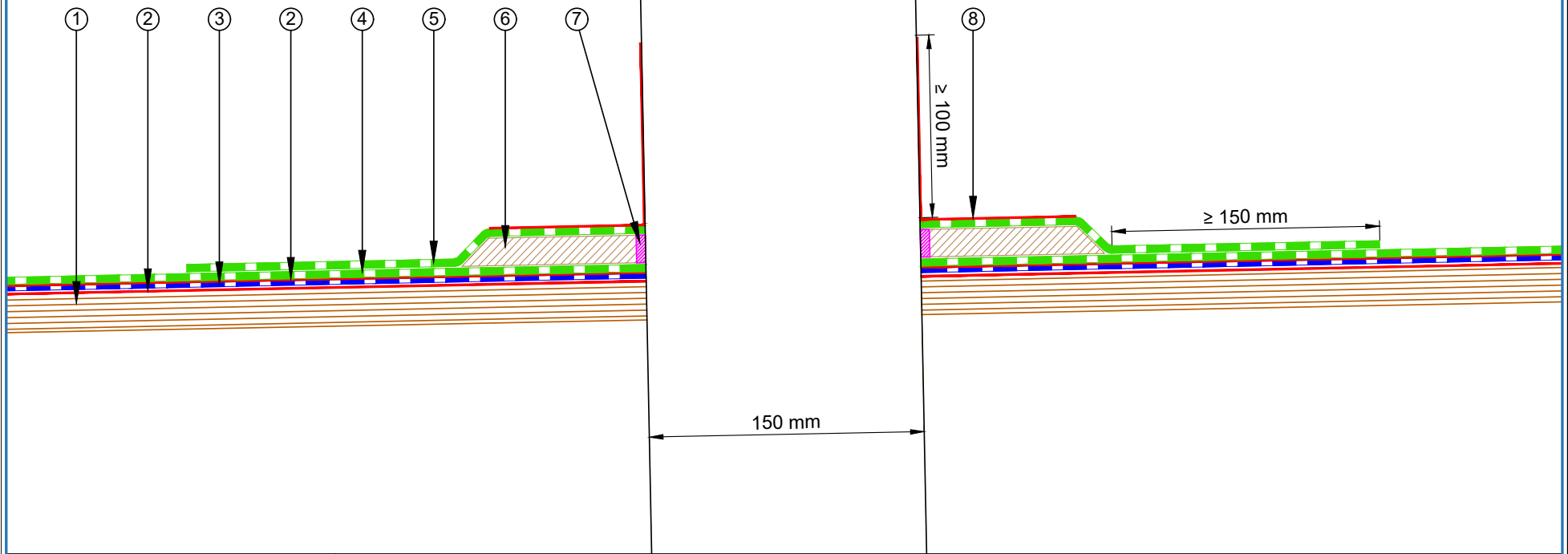
- ① Plywood Deck
- ② EQUUS Peel & Stick primer
- ③ EQUUS NOVA-SK base sheet (self-adhered)
- ④ EQUUS base sheet as separate piece
- ⑤ EQUUS NOVAGLASS cap sheet (self-adhered)
- ⑥ EQUUS cap sheet as separate piece
- ⑦ EQUUS bitumen fillet or approved alternative



PROJECT :	Cold Roof on Plywood Standard Detail - NOVA-SK FLAMELESS SYSTEM		
TITLE :	Internal Center Getter		
NUMBER :	SNCRPs-D3c	SCALE :	NTS
DRAWN BY :	NKT	DATE :	20-Aug-2024
		REVISED :	
<p><small>Equus Waterproof Membrane Details are specially drawn for use by Local Authorities, Building Contractors, Equus Applicators, Architects and design professionals. All details are drawn to assist in the development of project specific details. Details may be modified where necessary to accommodate job specific requirements but must be approved by Equus Industries Ltd. All components must be supplied by Equus Industries Ltd. Equus reserves the right to alter or upgrade details at any time without prior notice.</small></p>			



- ① Plywood Deck
 - ② EQUUS Peel & Stick primer
 - ③ EQUUS NOVA-SK base sheet (self-adhered)
 - ④ EQUUS NOVAGLASS cap sheet (self-adhered)
 - ⑤ EQUUS cap sheet as separate piece over Plywood Plinch
 - ⑥ Plywood Plinth
 - ⑦ EQUUS Alsan Mastic 2200 bitumen sealant
 - ⑧ EQUUS Alsan Flashing (Quadro) or Equus Matacryn
 - ⑨ SHS penetration
- Note: check compatibility with pipe material

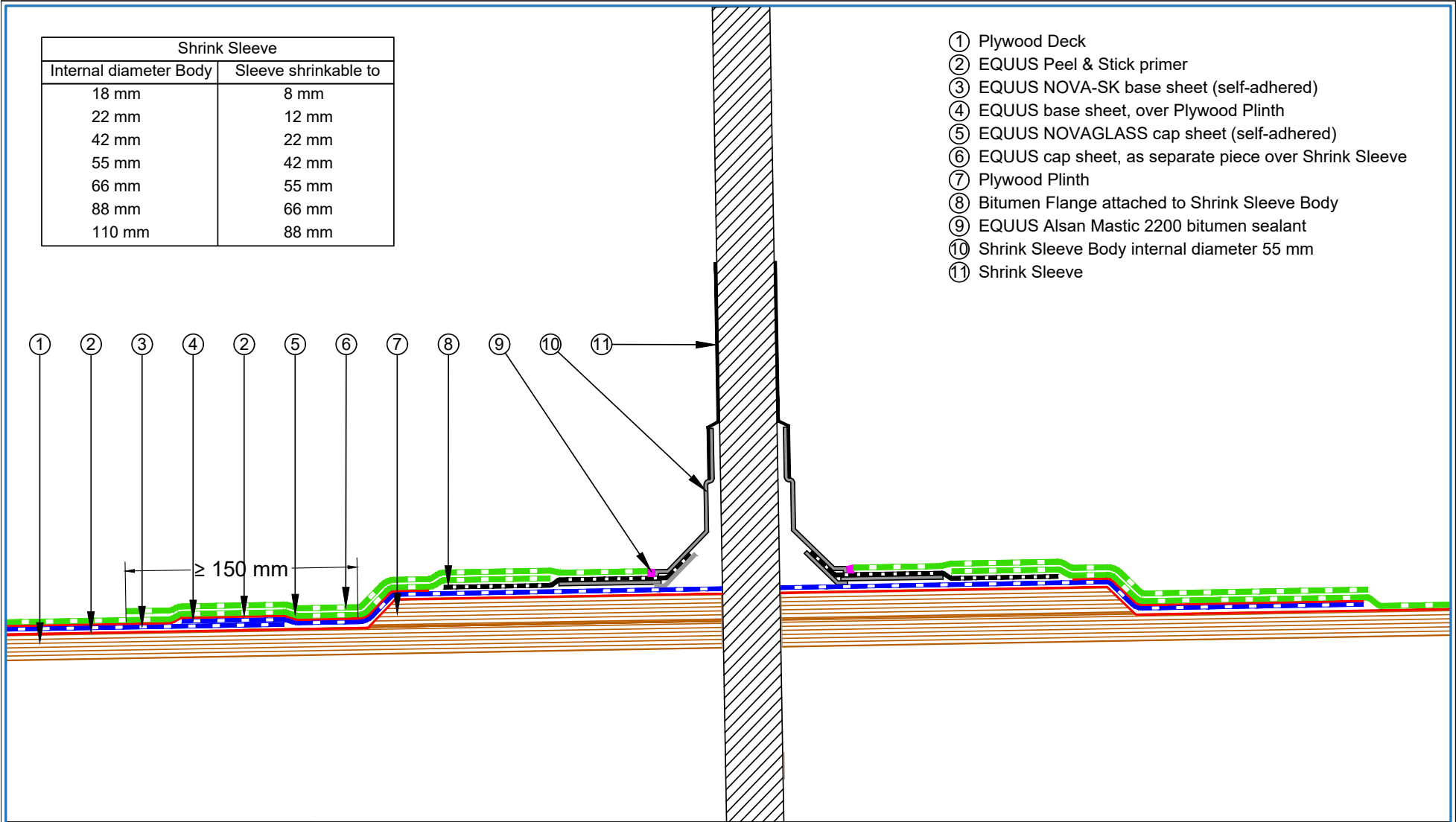


 E-mail : info@equus.nz Web : www.equus.co.nz	PROJECT :		Cold Roof on Plywood Standard Detail - NOVA-SK FLAMELESS SYSTEM	
	TITLE :		Pipe Penetration	
	NUMBER :	SNCRPs-D4a	SCALE :	NTS
	DRAWN BY :	NKT	DATE :	20-Aug-2024
	REVISD :			
Equus Waterproof Membrane Details are specially drawn for use by Local Authorities, Building Contractors, Equus Applicators, Architects and design professionals. All details are drawn to assist in the development of project specific details. Details may be modified where necessary to accommodate job specific requirements but must be approved by Equus Industries Ltd. All components must be supplied by Equus Industries Ltd. Equus reserves the right to alter or upgrade details at any time without prior notice.				



Shrink Sleeve	
Internal diameter Body	Sleeve shrinkable to
18 mm	8 mm
22 mm	12 mm
42 mm	22 mm
55 mm	42 mm
66 mm	55 mm
88 mm	66 mm
110 mm	88 mm

- ① Plywood Deck
- ② EQUUS Peel & Stick primer
- ③ EQUUS NOVA-SK base sheet (self-adhered)
- ④ EQUUS base sheet, over Plywood Plinth
- ⑤ EQUUS NOVAGLASS cap sheet (self-adhered)
- ⑥ EQUUS cap sheet, as separate piece over Shrink Sleeve
- ⑦ Plywood Plinth
- ⑧ Bitumen Flange attached to Shrink Sleeve Body
- ⑨ EQUUS Alsan Mastic 2200 bitumen sealant
- ⑩ Shrink Sleeve Body internal diameter 55 mm
- ⑪ Shrink Sleeve

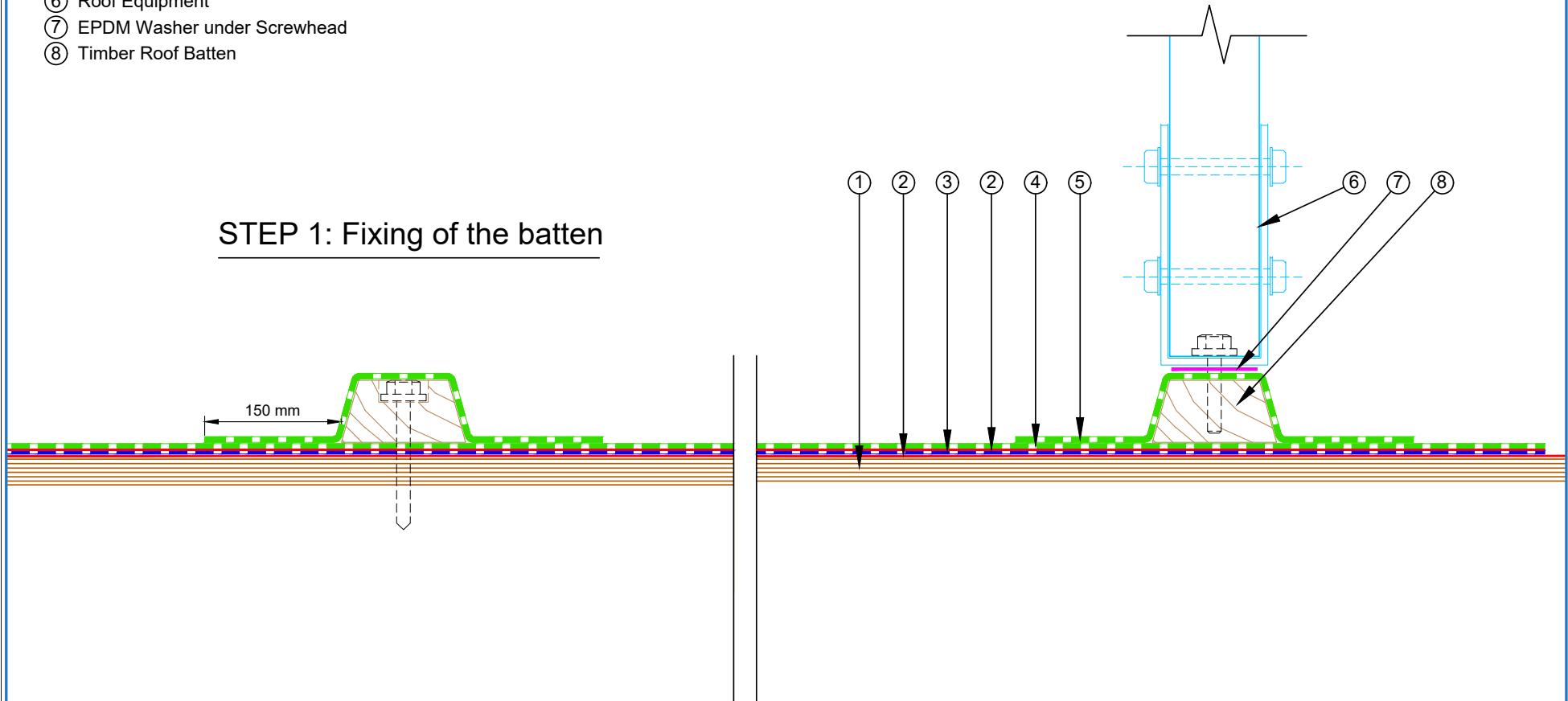


<p>E-mail : info@equus.nz Web : www.equus.co.nz</p>	PROJECT :	Cold Roof on Plywood Standard Detail - NOVA-SK FLAMELESS SYSTEM		
	TITLE :	Pipe Penetration with Shrink Sleeve		
	NUMBER :	SNCRPs-D4b	SCALE :	NTS
	DRAWN BY :	NKT	DATE :	20-Aug-2024
			REVISED :	
<p><small>Equus Waterproof Membrane Details are specially drawn for use by Local Authorities, Building Contractors, Equus Applicators, Architects and design professionals. All details are drawn to assist in the development of project specific details. Details may be modified where necessary to accommodate job specific requirements but must be approved by Equus Industries Ltd. All components must be supplied by Equus Industries Ltd. Equus reserves the right to alter or upgrade details at any time without prior notice.</small></p>				
		<p>AUTHORISED DISTRIBUTOR SOPREMA</p>		

- ① Plywood Deck
- ② EQUUS Peel & Stick primer
- ③ EQUUS NOVA-SK base sheet (self-adhered)
- ④ EQUUS NOVAGLASS cap sheet (self-adhered)
- ⑤ EQUUS cap sheet as separate piece over Batten
- ⑥ Roof Equipment
- ⑦ EPDM Washer under Screwhead
- ⑧ Timber Roof Batten

STEP 2: Fixing of the Equipment

STEP 1: Fixing of the batten



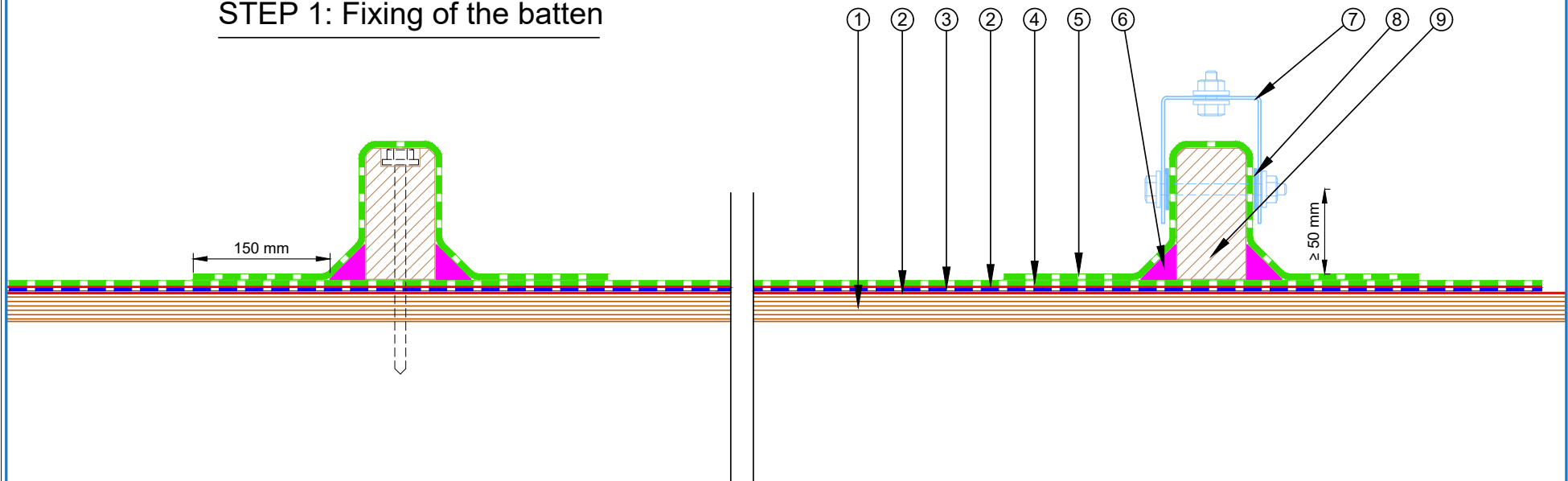
PROJECT :	Cold Roof on Plywood Standard Detail - NOVA-SK FLAMELESS SYSTEM		
TITLE :	Roof Equipment Support Batten		
NUMBER :	SNCRPs-D5a	SCALE :	NTS
DRAWN BY :	NKT	DATE :	20-Aug-2024
		REVISED :	
<p><small>Equus Waterproof Membrane Details are specially drawn for use by Local Authorities, Building Contractors, Equus Applicators, Architects and design professionals. All details are drawn to assist in the development of project specific details. Details may be modified where necessary to accommodate job specific requirements but must be approved by Equus Industries Ltd. All components must be supplied by Equus Industries Ltd. Equus reserves the right to alter or upgrade details at any time without prior notice.</small></p>			



- ① Plywood Deck
- ② EQUUS Peel & Stick primer
- ③ EQUUS NOVA-SK base sheet (self-adhered)
- ④ EQUUS NOVAGLASS cap sheet (self-adhered)
- ⑤ EQUUS cap sheet as separate piece over Batten
- ⑥ EQUUS bitumen fillet or approved alternative
- ⑦ Roof Equipment Bracket
- ⑧ EPDM Washer
- ⑨ Timber Roof Batten

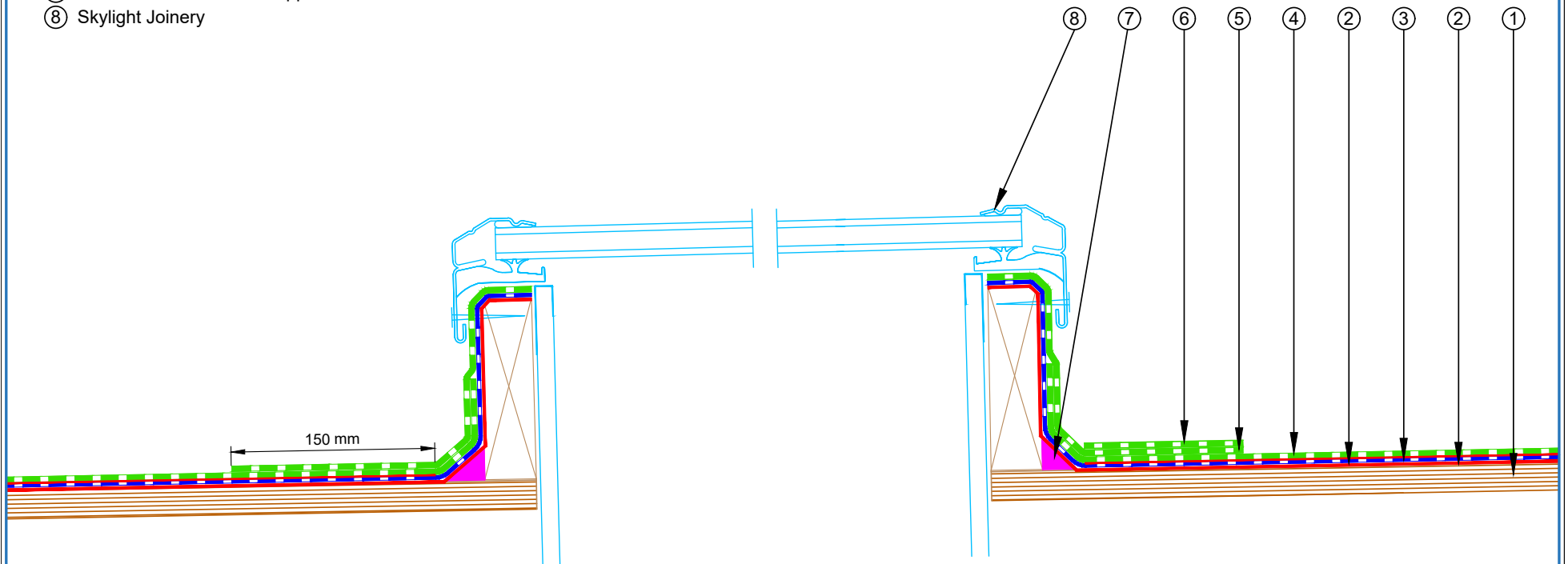
STEP 2: Fixing of the Equipment

STEP 1: Fixing of the batten



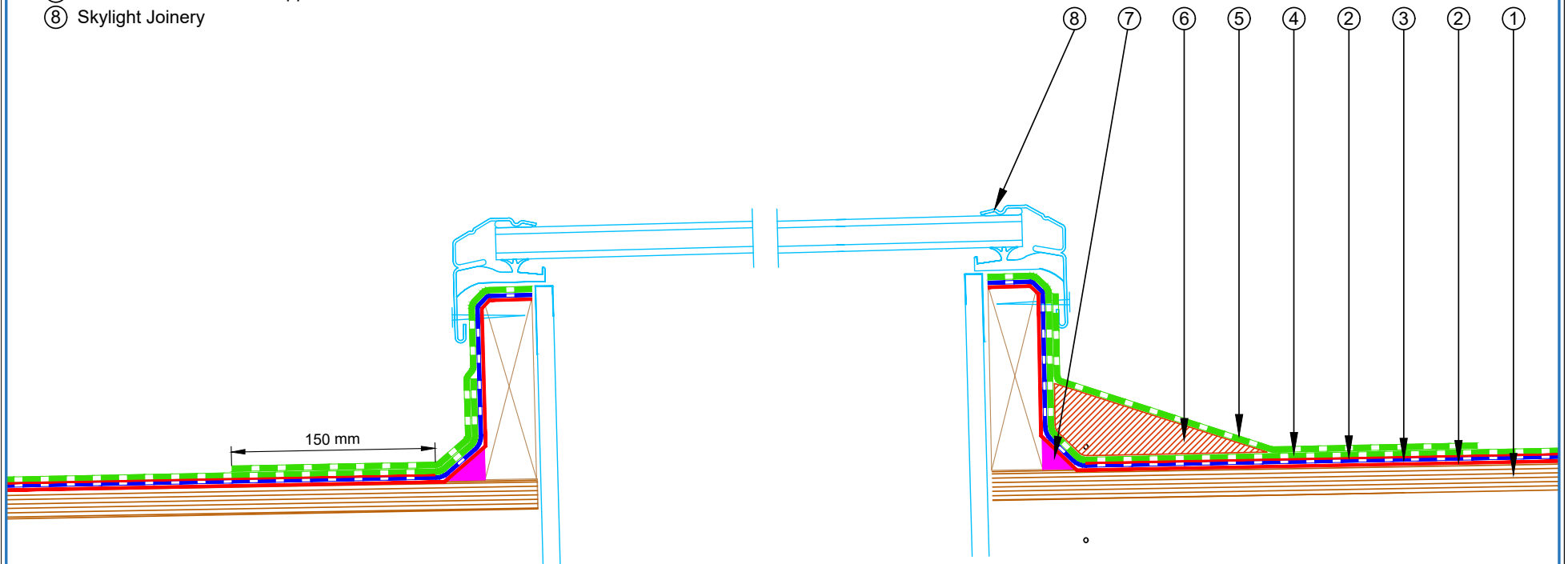
 E-mail : info@equus.nz Web : www.equus.co.nz	PROJECT :	Cold Roof on Plywood Standard Detail - NOVA-SK FLAMELESS SYSTEM		
	TITLE :	Roof Equipment Support Batten (Optional)		
	NUMBER :	SNCRPs-D5b	SCALE :	NTS
	DRAWN BY :	NKT	DATE :	20-Aug-2024
			REVISED :	
Equus Waterproof Membrane Details are specially drawn for use by Local Authorities, Building Contractors, Equus Applicators, Architects and design professionals. All details are drawn to assist in the development of project specific details. Details may be modified where necessary to accommodate job specific requirements but must be approved by Equus Industries Ltd. All components must be supplied by Equus Industries Ltd. Equus reserves the right to alter or upgrade details at any time without prior notice.				

- ① Plywood Deck
- ② EQUUS Peel & Stick primer
- ③ EQUUS NOVA-SK base sheet (self-adhered)
- ④ EQUUS NOVAGLASS cap sheet (self-adhered)
- ⑤ EQUUS cap sheet as separate piece
- ⑥ Extra triangular piece of EQUUS cap sheet to divert water
- ⑦ EQUUS bitumen fillet or approved alternative
- ⑧ Skylight Joinery



<p>E-mail : info@equus.nz Web : www.equus.co.nz</p>	PROJECT :	Cold Roof on Plywood Standard Detail - NOVA-SK FLAMELESS SYSTEM		
	TITLE :	Skylight/Roof hatch with Extra triangular piece of cap sheet to divert water		
	NUMBER :	SNCRPs-D6a	SCALE :	NTS
	DRAWN BY :	NKT	DATE :	20-Aug-2024
			REVISED :	
<p><small>Equus Waterproof Membrane Details are specially drawn for use by Local Authorities, Building Contractors, Equus Applicators, Architects and design professionals. All details are drawn to assist in the development of project specific details. Details may be modified where necessary to accommodate job specific requirements but must be approved by Equus Industries Ltd. All components must be supplied by Equus Industries Ltd. Equus reserves the right to alter or upgrade details at any time without prior notice.</small></p>				
		<p>AUTHORISED DISTRIBUTOR SOPREMA</p>		

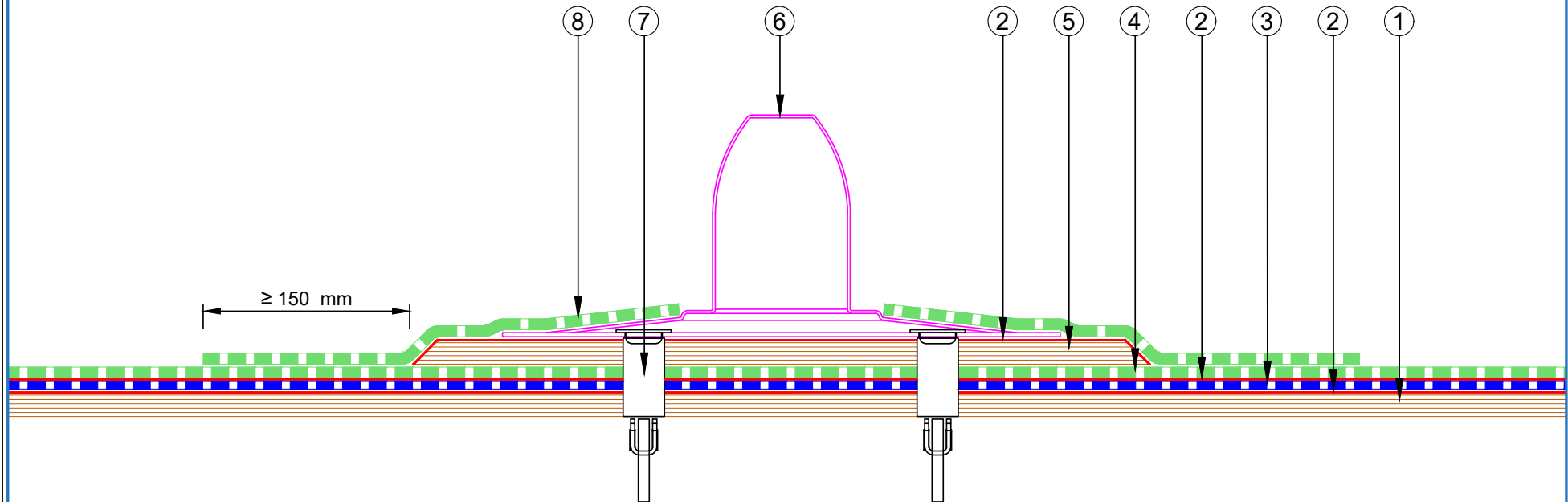
- ① Plywood Deck
- ② EQUUS Peel & Stick primer
- ③ EQUUS NOVA-SK base sheet (self-adhered)
- ④ EQUUS NOVAGLASS cap sheet (self-adhered)
- ⑤ EQUUS cap sheet as separate piece
- ⑥ Sloped drainage cricket to divert water around skylight
- ⑦ EQUUS bitumen fillet or approved alternative
- ⑧ Skylight Joinery



PROJECT :	Cold Roof on Plywood Standard Detail - NOVA-SK FLAMELESS SYSTEM		
TITLE :	Skylight/Roof hatch with diverter		
NUMBER :	SNCRPs-D6b	SCALE :	NTS
DRAWN BY :	NKT	DATE :	20-Aug-2024
<p><small>Equus Waterproof Membrane Details are specially drawn for use by Local Authorities, Building Contractors, Equus Applicators, Architects and design professionals. All details are drawn to assist in the development of project specific details. Details may be modified where necessary to accommodate job specific requirements but must be approved by Equus Industries Ltd. All components must be supplied by Equus Industries Ltd. Equus reserves the right to alter or upgrade details at any time without prior notice.</small></p>			

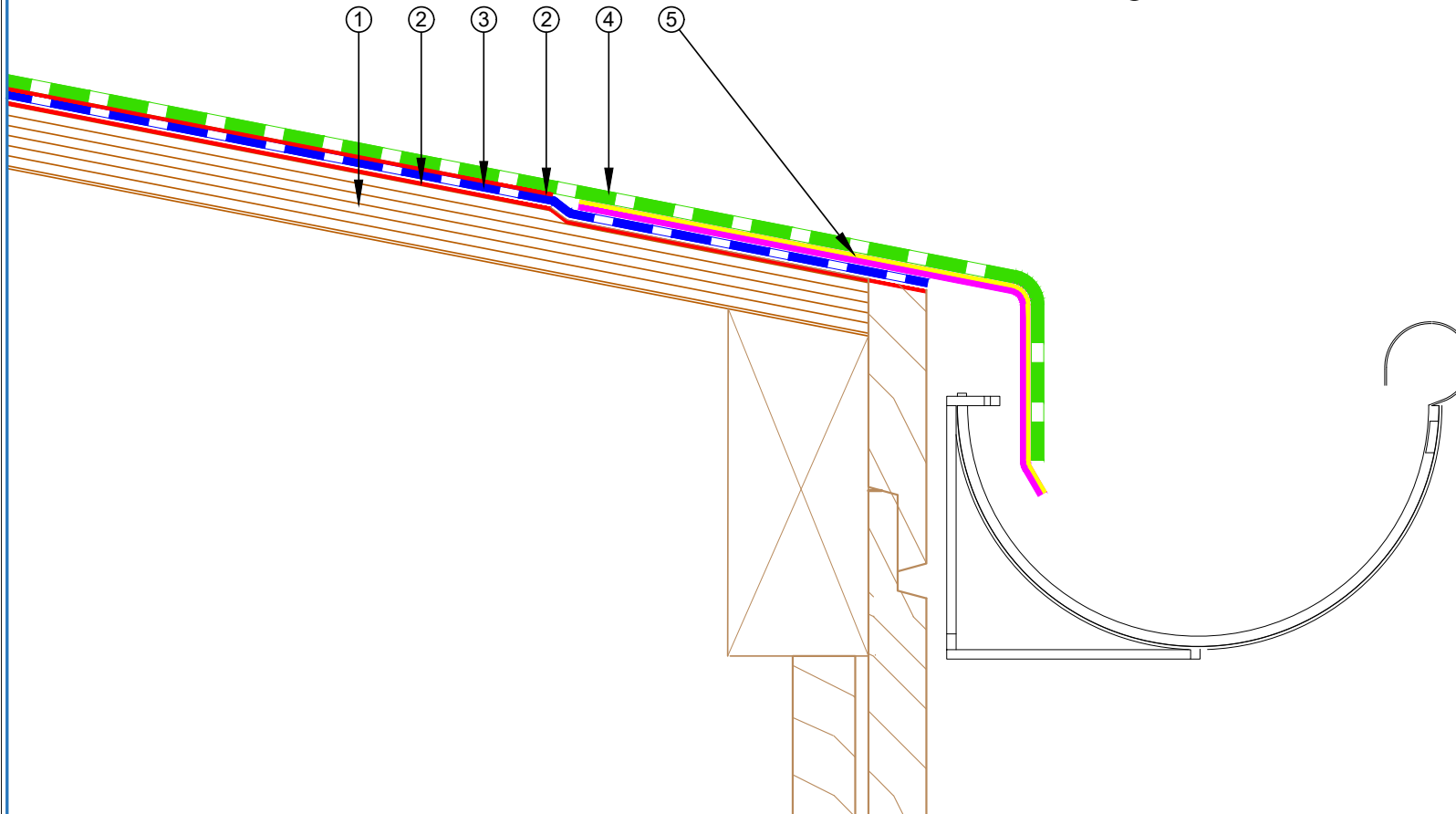


- ① Plywood Deck
- ② EQUUS Peel & Stick primer
- ③ EQUUS NOVA-SK base sheet (self-adhered)
- ④ EQUUS NOVAGLASS cap sheet (self-adhered)
- ⑤ 18 mm Plywood plinth under Anchor points
- ⑥ Fall Arrest Anchor
- ⑦ Toggle fixing
- ⑧ EQUUS Cap Sheet as separate piece over Anchor point

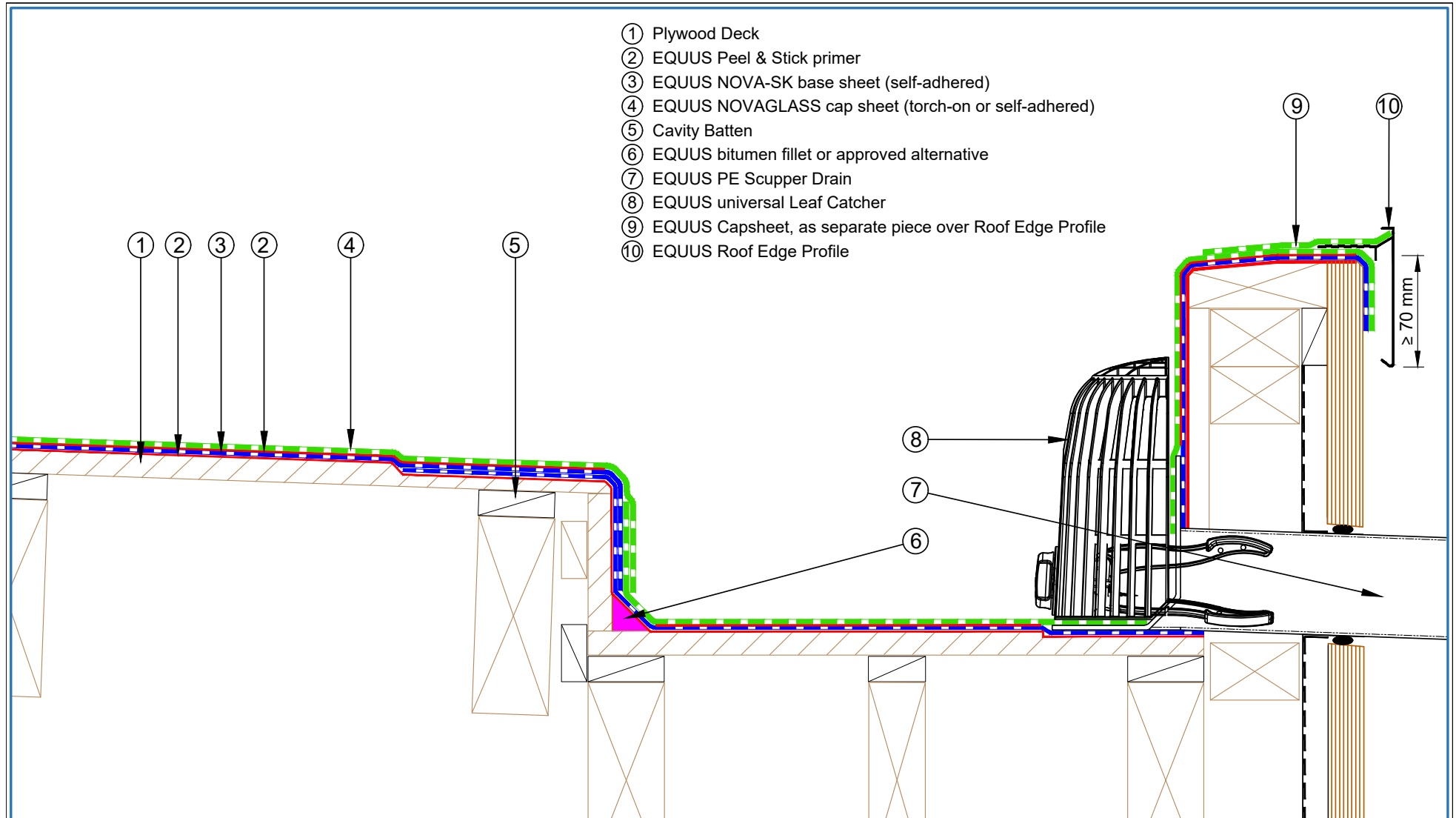


 E-mail : info@equus.nz Web : www.equus.co.nz	PROJECT :	Cold Roof on Plywood Standard Detail - NOVA-SK FLAMELESS SYSTEM		
	TITLE :	Fall restraint		
	NUMBER :	SNCRPs-D7a	SCALE :	NTS
	DRAWN BY :	NKT	DATE :	20-Aug-2024
			REVISED :	
Equus Waterproof Membrane Details are specially drawn for use by Local Authorities, Building Contractors, Equus Applicators, Architects and design professionals. All details are drawn to assist in the development of project specific details. Details may be modified where necessary to accommodate job specific requirements but must be approved by Equus Industries Ltd. All components must be supplied by Equus Industries Ltd. Equus reserves the right to alter or upgrade details at any time without prior notice.				

- ① Plywood Deck
- ② EQUUS Peel & Stick primer
- ③ EQUUS NOVA-SK base sheet (self-adhered)
- ④ EQUUS NOVAGLASS cap sheet (self-adhered)
- ⑤ Aluminium Flashing treated with EQUUS 'Spray & Go' Primer

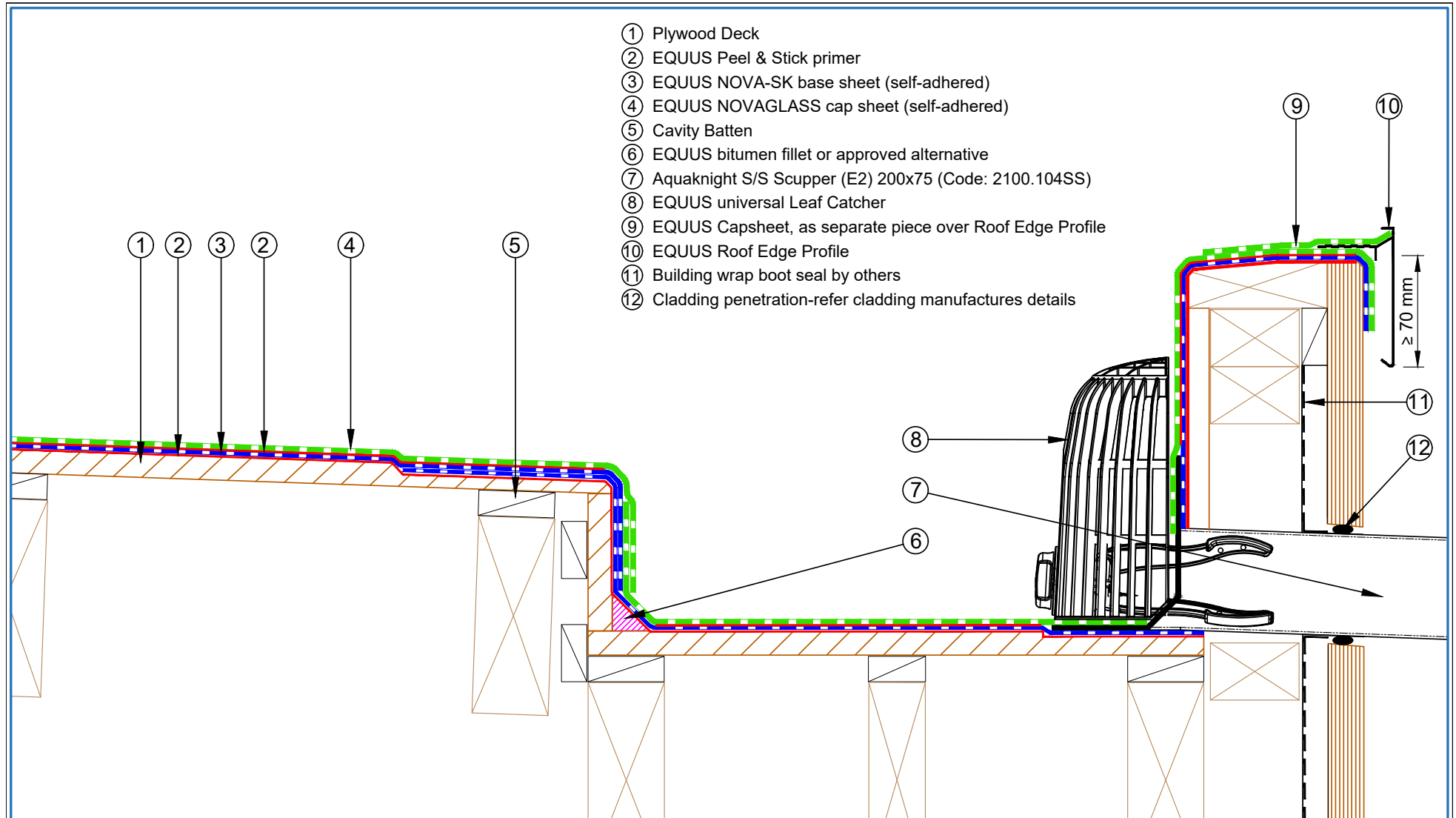


 E-mail : info@equus.nz Web : www.equus.co.nz	PROJECT :		Cold Roof on Plywood Standard Detail - NOVA-SK FLAMELESS SYSTEM	
	TITLE :		Connection to external gutter	
	NUMBER :	SNCRPs-D8a	SCALE :	NTS
	DRAWN BY :	NKT	DATE :	20-Aug-2024
	REVISD :			
<p>Equus Waterproof Membrane Details are specially drawn for use by Local Authorities, Building Contractors, Equus Applicators, Architects and design professionals. All details are drawn to assist in the development of project specific details. Details may be modified where necessary to accommodate job specific requirements but must be approved by Equus Industries Ltd. All components must be supplied by Equus Industries Ltd. Equus reserves the right to alter or upgrade details at any time without prior notice.</p>				



- ① Plywood Deck
- ② EQUUS Peel & Stick primer
- ③ EQUUS NOVA-SK base sheet (self-adhered)
- ④ EQUUS NOVAGLASS cap sheet (torch-on or self-adhered)
- ⑤ Cavity Batten
- ⑥ EQUUS bitumen fillet or approved alternative
- ⑦ EQUUS PE Scupper Drain
- ⑧ EQUUS universal Leaf Catcher
- ⑨ EQUUS Capsheet, as separate piece over Roof Edge Profile
- ⑩ EQUUS Roof Edge Profile

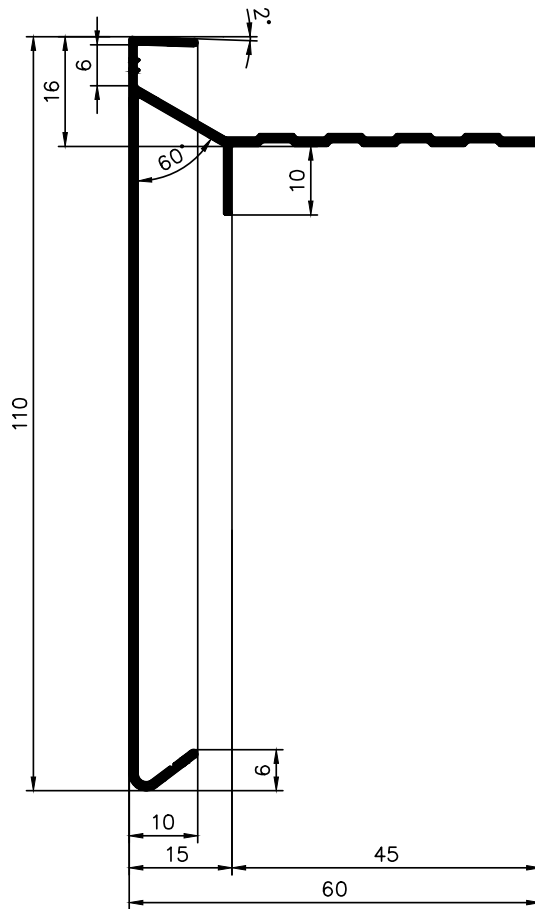
 E-mail : info@equus.nz Web : www.equus.co.nz	PROJECT :		Cold Roof on Plywood Standard Detail - NOVA-SK FLAMELESS SYSTEM	
	TITLE :		Scupper Drain Detail	
	NUMBER :	SNCRPs-D9a	SCALE :	NTS
	DRAWN BY :	NKT	DATE :	20-Aug-2024
			REVISED :	
Equus Waterproof Membrane Details are specially drawn for use by Local Authorities, Building Contractors, Equus Applicators, Architects and design professionals. All details are drawn to assist in the development of project specific details. Details may be modified where necessary to accommodate job specific requirements but must be approved by Equus Industries Ltd. All components must be supplied by Equus Industries Ltd. Equus reserves the right to alter or upgrade details at any time without prior notice.				
		AUTHORISED DISTRIBUTOR SOPREMA		



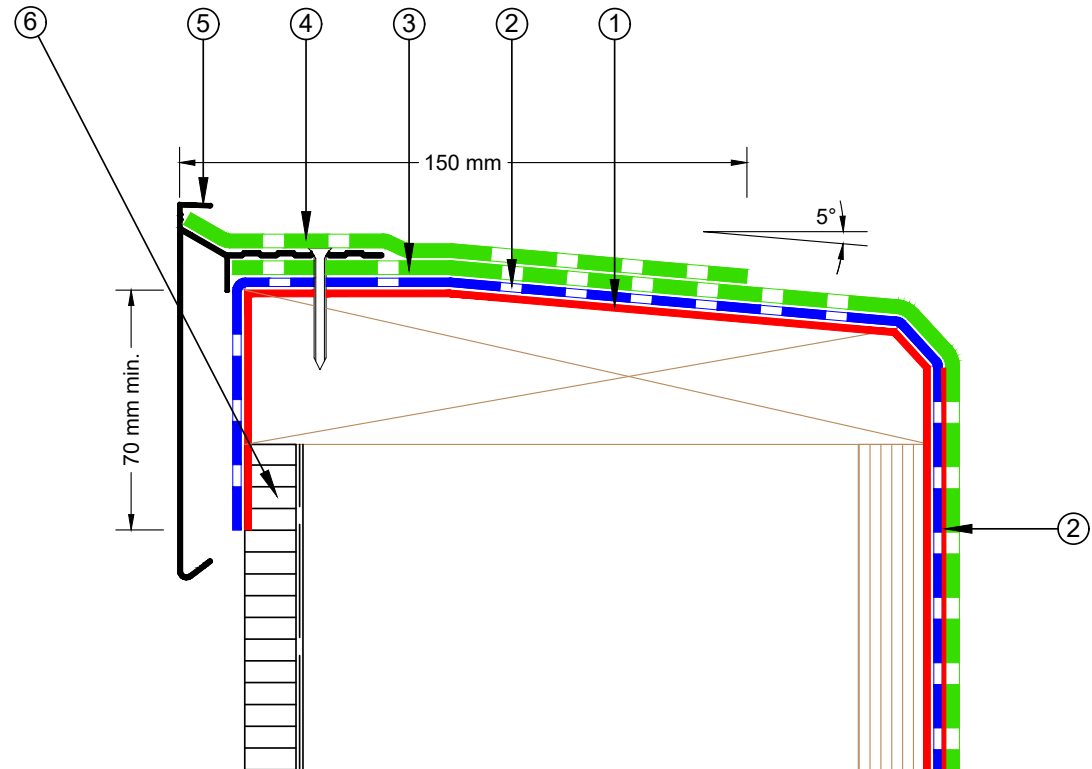
- ① Plywood Deck
- ② EQUUS Peel & Stick primer
- ③ EQUUS NOVA-SK base sheet (self-adhered)
- ④ EQUUS NOVAGLASS cap sheet (self-adhered)
- ⑤ Cavity Batten
- ⑥ EQUUS bitumen fillet or approved alternative
- ⑦ Aquaknight S/S Scupper (E2) 200x75 (Code: 2100.104SS)
- ⑧ EQUUS universal Leaf Catcher
- ⑨ EQUUS Capsheet, as separate piece over Roof Edge Profile
- ⑩ EQUUS Roof Edge Profile
- ⑪ Building wrap boot seal by others
- ⑫ Cladding penetration-refer cladding manufactures details

 E-mail : info@equus.nz Web : www.equus.co.nz	PROJECT :		Cold Roof on Plywood Standard Detail - NOVA-SK FLAMELESS SYSTEM	
	TITLE :		Aquaknight S/S Scupper Detail	
	NUMBER :	SNCRPs-D9b	SCALE :	NTS
	DRAWN BY :	NKT	DATE :	20-Aug-2024
			REVISED :	
Equus Waterproof Membrane Details are specially drawn for use by Local Authorities, Building Contractors, Equus Applicators, Architects and design professionals. All details are drawn to assist in the development of project specific details. Details may be modified where necessary to accommodate job specific requirements but must be approved by Equus Industries Ltd. All components must be supplied by Equus Industries Ltd. Equus reserves the right to alter or upgrade details at any time without prior notice.				





- ① EQUUS Peel & Stick primer
- ② EQUUS NOVA-SK base sheet (self-adhered)
- ③ EQUUS NOVAGLASS cap sheet (self-adhered)
- ④ EQUUS Capsheet as separate piece over Roof edge profile
- ⑤ EQUUS Roof edge profile
- ⑥ Wall cladding and building wrap (by others)

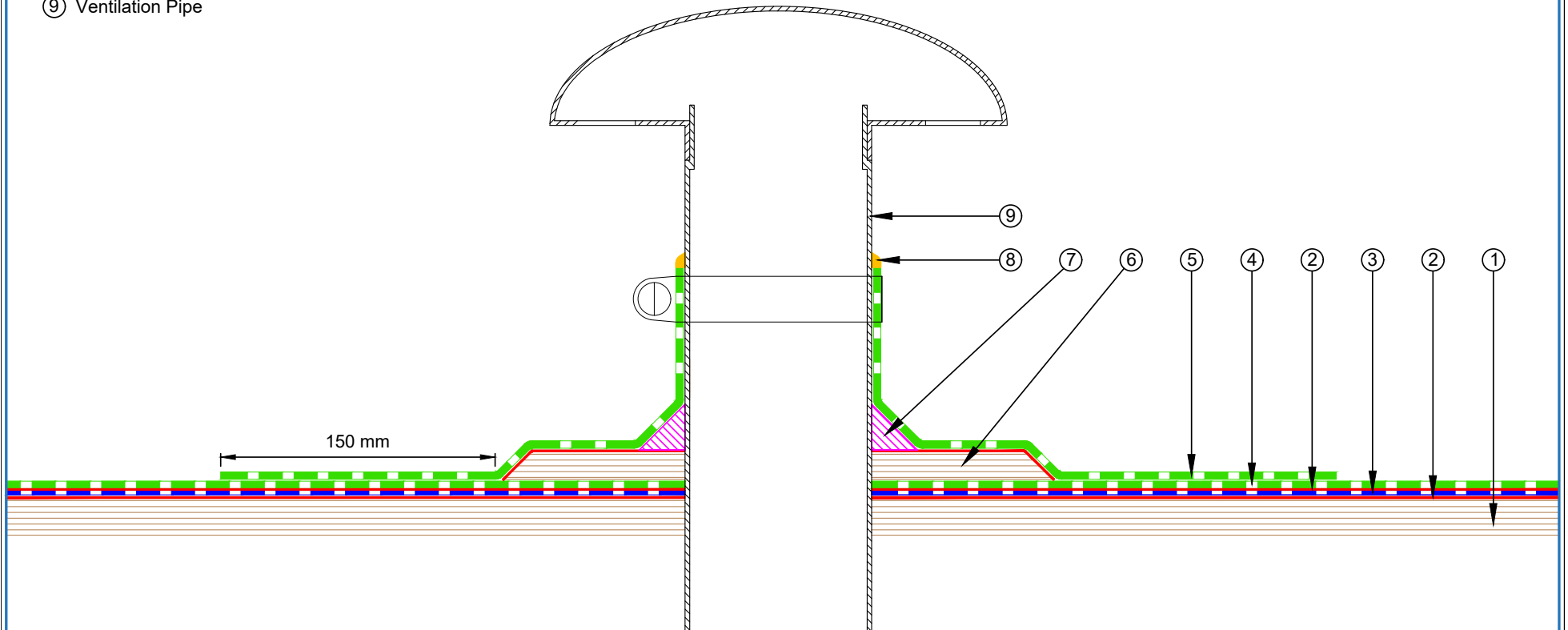


E-mail : info@equus.nz
Web : www.equus.co.nz

PROJECT :	Cold Roof on Plywood Standard Detail - NOVA-SK FLAMELESS SYSTEM		
TITLE :	Upstand detail with roof edge profile		
NUMBER :	SNCRPs-D10a	SCALE :	NTS
DRAWN BY :	NKT	DATE :	20-Aug-2024
<p><small>Equus Waterproof Membrane Details are specially drawn for use by Local Authorities, Building Contractors, Equus Applicators, Architects and design professionals. All details are drawn to assist in the development of project specific details. Details may be modified where necessary to accommodate job specific requirements but must be approved by Equus Industries Ltd. All components must be supplied by Equus Industries Ltd. Equus reserves the right to alter or upgrade details at any time without prior notice.</small></p>			

AUTHORISED DISTRIBUTOR
SOPREMA

- ① Plywood Deck
- ② EQUUS Peel & Stick primer
- ③ EQUUS NOVA-SK base sheet (self-adhered)
- ④ EQUUS NOVAGLASS cap sheet (self-adhered)
- ⑤ EQUUS Capsheet as separate piece over Plywood Plinth
- ⑥ Plywood Plinth
- ⑦ EQUUS bitumen fillet or approved alternative
- ⑧ EQUUS Alsan Mastic 2200 bitumen sealant
- ⑨ Ventilation Pipe

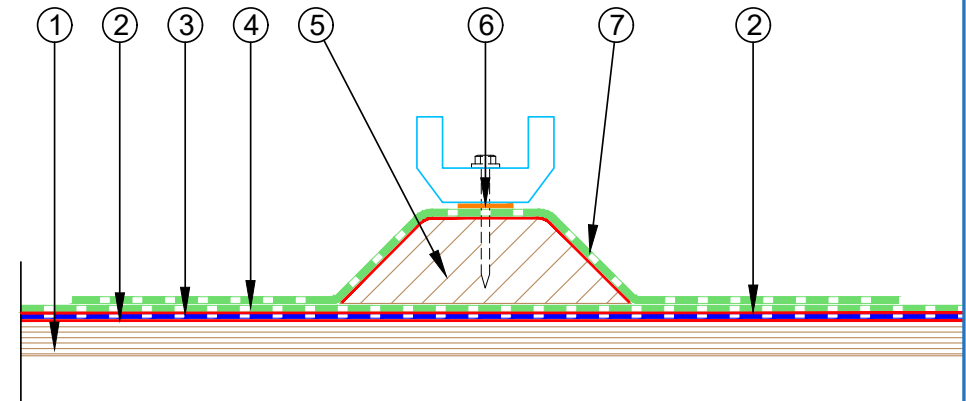
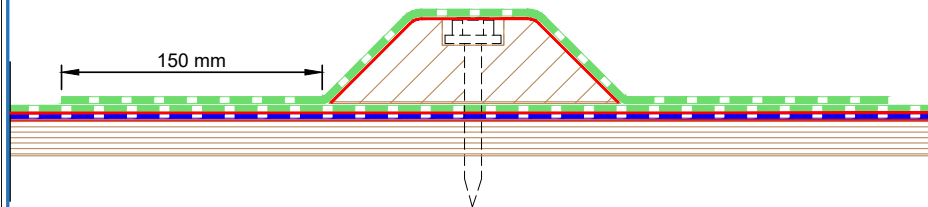


 E-mail : info@equus.nz Web : www.equus.co.nz	PROJECT :		Cold Roof on Plywood Standard Detail - NOVA-SK FLAMELESS SYSTEM	
	TITLE :		Ventilation Pipe with plinth Detail	
	NUMBER :	SNCRPs-D11a	SCALE :	NTS
	DRAWN BY :	NKT	DATE :	20-Aug-2024
			REVISED :	
Equus Waterproof Membrane Details are specially drawn for use by Local Authorities, Building Contractors, Equus Applicators, Architects and design professionals. All details are drawn to assist in the development of project specific details. Details may be modified where necessary to accommodate job specific requirements but must be approved by Equus Industries Ltd. All components must be supplied by Equus Industries Ltd. Equus reserves the right to alter or upgrade details at any time without prior notice.				

- ① Plywood Deck
- ② EQUUS Peel & Stick primer
- ③ EQUUS NOVA-SK base sheet (self-adhered)
- ④ EQUUS NOVAGLASS cap sheet (self-adhered)
- ⑤ Timber Plinth
- ⑥ Monkey Toe Roof Profile Fixing with Neoprene Washer
- ⑦ EQUUS Capsheet, as separate piece over Timber Plinth

STEP 2: Fixing of the Monkey Toe Roof Profile

STEP 1: Fixing of the Timber Plinth

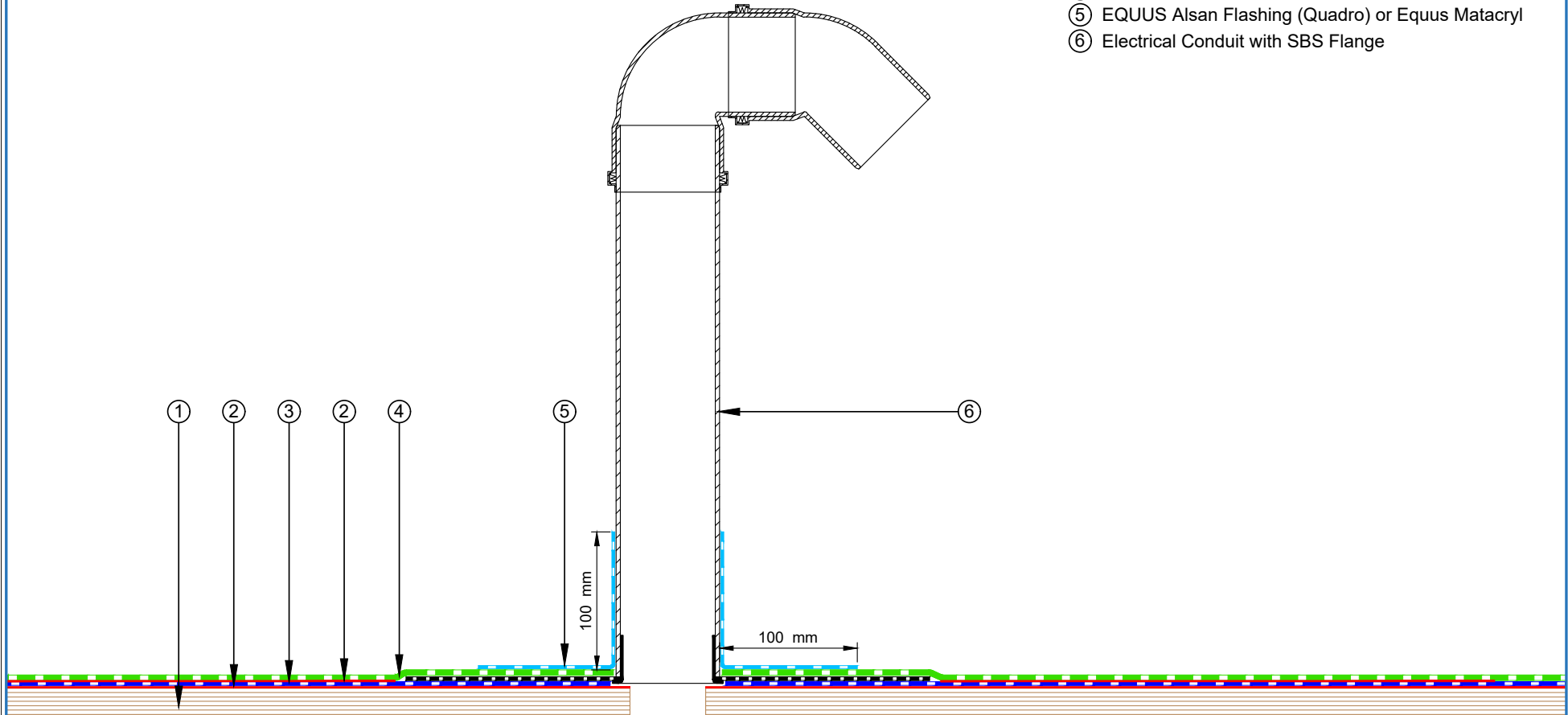


E-mail : info@equus.nz
Web : www.equus.co.nz

PROJECT :	Cold Roof on Plywood Standard Detail - NOVA-SK FLAMELESS SYSTEM		
TITLE :	Monkey Toe Walkway Fixing Detail		
NUMBER :	SNCRPs-D12a	SCALE :	NTS
DRAWN BY :	NKT	DATE :	21-Aug-2024
		REVISED :	
<p><small>Equus Waterproof Membrane Details are specially drawn for use by Local Authorities, Building Contractors, Equus Applicators, Architects and design professionals. All details are drawn to assist in the development of project specific details. Details may be modified where necessary to accommodate job specific requirements but must be approved by Equus Industries Ltd. All components must be supplied by Equus Industries Ltd. Equus reserves the right to alter or upgrade details at any time without prior notice.</small></p>			



- ① Plywood Deck
- ② EQUUS Sopradere Quick or Aquadere bitumen primer
- ③ EQUUS NOVA-SK base sheet (self-adhered)
- ④ EQUUS NOVAGLASS cap sheet (self-adhered)
- ⑤ EQUUS Alsan Flashing (Quadro) or Equus Matacryl
- ⑥ Electrical Conduit with SBS Flange



E-mail : info@equus.nz
Web : www.equus.co.nz

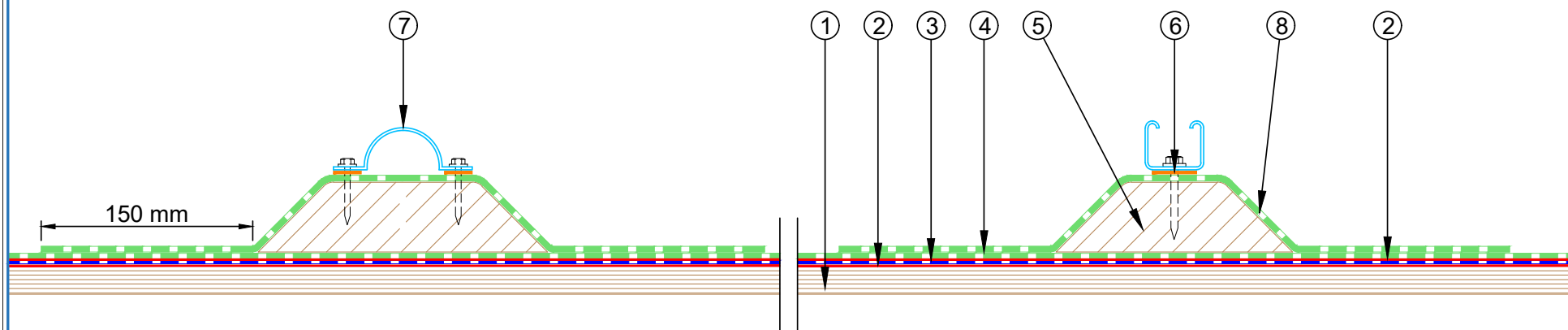
PROJECT :	Cold Roof on Plywood Standard Detail - NOVA-SK FLAMELESS SYSTEM		
TITLE :	Electrical Conduit		
NUMBER :	SNCRPs-D13a	SCALE :	NTS
DRAWN BY :	NKT	DATE :	21-Aug-2024
		REVISED :	
<p><small>Equus Waterproof Membrane Details are specially drawn for use by Local Authorities, Building Contractors, Equus Applicators, Architects and design professionals. All details are drawn to assist in the development of project specific details. Details may be modified where necessary to accommodate job specific requirements but must be approved by Equus Industries Ltd. All components must be supplied by Equus Industries Ltd. Equus reserves the right to alter or upgrade details at any time without prior notice.</small></p>			

AUTHORISED DISTRIBUTOR
SOPREMA

- ① Plywood Deck
- ② EQUUS Peel & Stick primer
- ③ EQUUS NOVA-SK base sheet (self-adhered)
- ④ EQUUS NOVAGLASS cap sheet (self-adhered)
- ⑤ Timber Plinth, glued to Capsheet
- ⑥ Clip Ring Fixing with Neoprene Washer into Timber Plinth, but not through Capsheet underneath
- ⑦ Metal Framing Fixing with Neoprene Washer into Timber Plinth, but not through Capsheet underneath
- ⑧ EQUUS Capsheet, as separate piece over Timber Plinth

A. Clip Ring

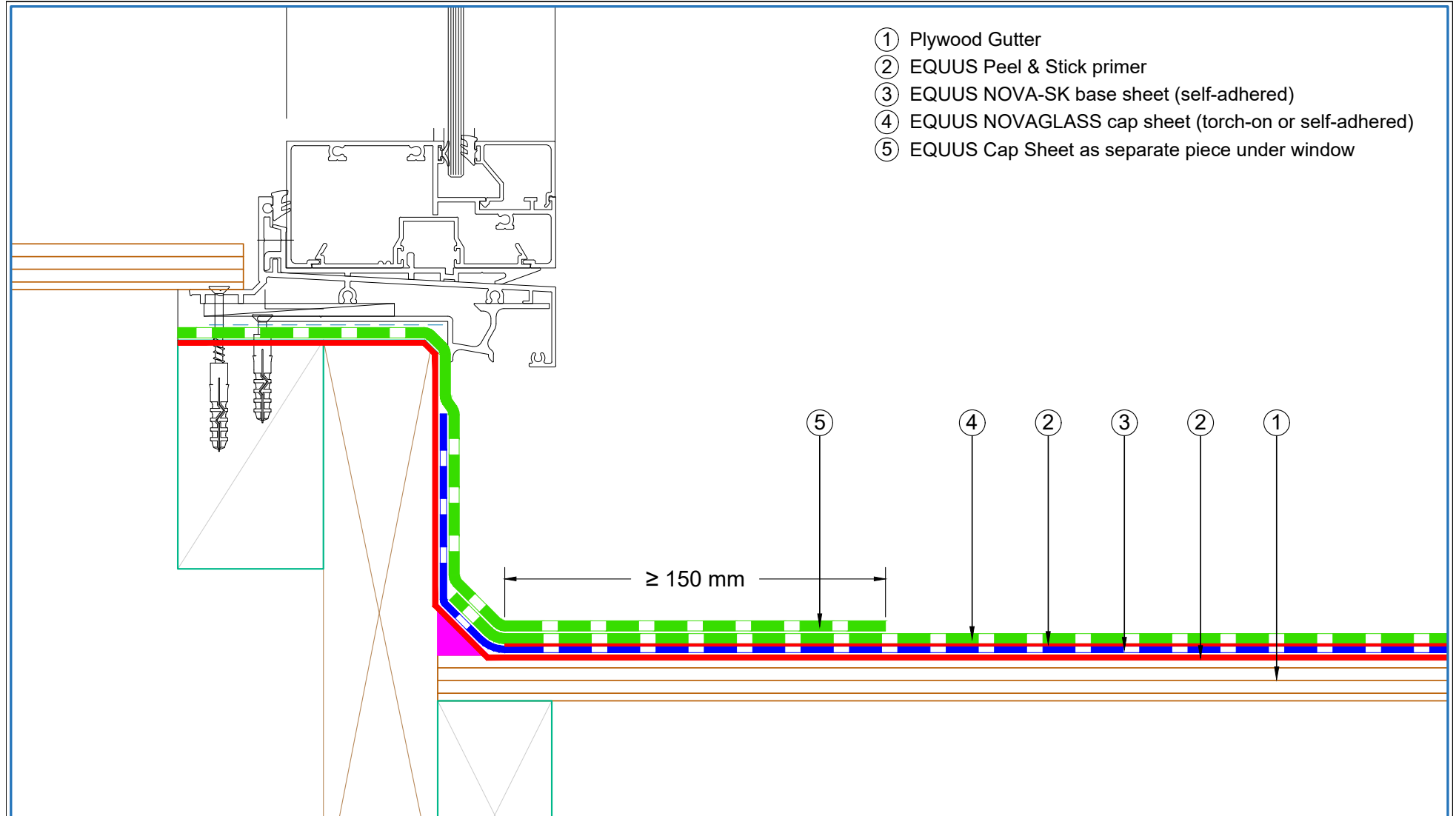
B. Metal Framing



E-mail : info@equus.nz
Web : www.equus.co.nz

PROJECT :	Cold Roof on Plywood Standard Detail - NOVA-SK FLAMELESS SYSTEM		
TITLE :	Cable Tray Support Fixing Detail		
NUMBER :	SNCRPs-D14a	SCALE :	NTS
DRAWN BY :	NKT	DATE :	21-Aug-2024
		REVISED :	
<p><small>Equus Waterproof Membrane Details are specially drawn for use by Local Authorities, Building Contractors, Equus Applicators, Architects and design professionals. All details are drawn to assist in the development of project specific details. Details may be modified where necessary to accommodate job specific requirements but must be approved by Equus Industries Ltd. All components must be supplied by Equus Industries Ltd. Equus reserves the right to alter or upgrade details at any time without prior notice.</small></p>			



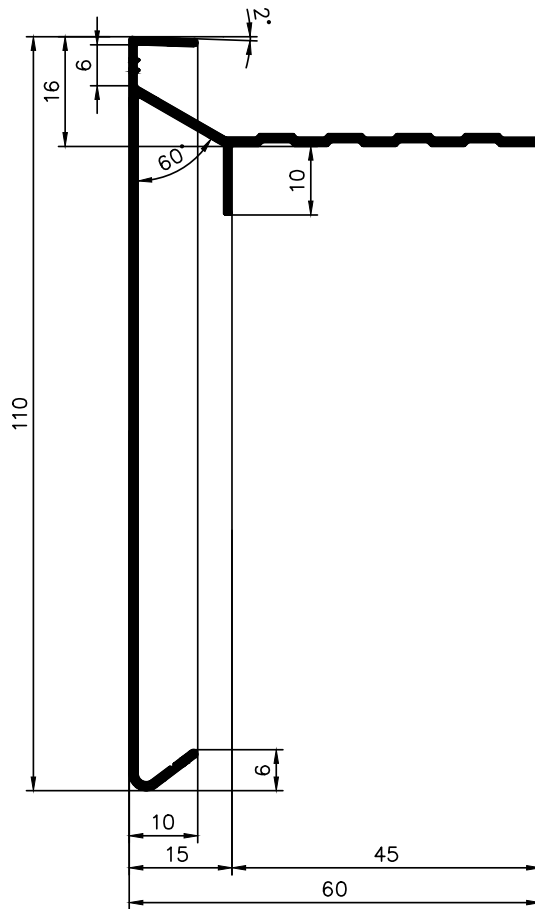


- ① Plywood Gutter
- ② EQUUS Peel & Stick primer
- ③ EQUUS NOVA-SK base sheet (self-adhered)
- ④ EQUUS NOVAGLASS cap sheet (torch-on or self-adhered)
- ⑤ EQUUS Cap Sheet as separate piece under window

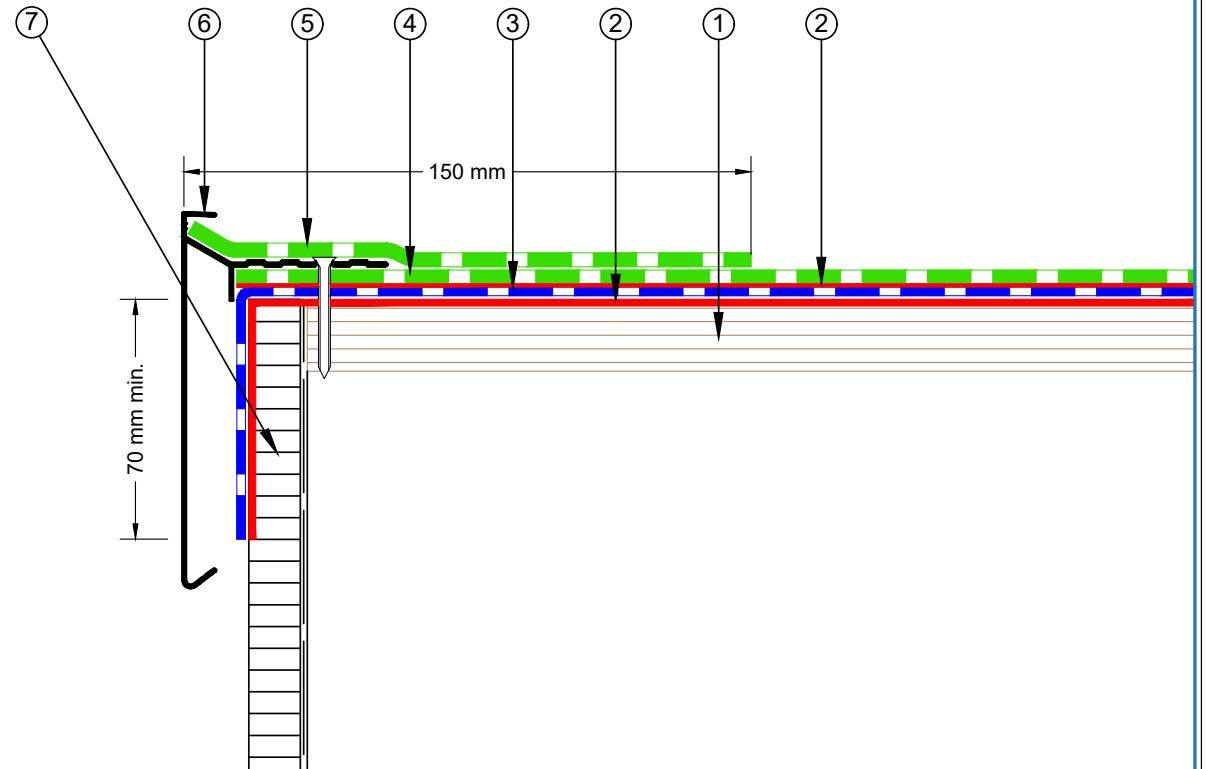
E-mail : info@equus.nz
Web : www.equus.co.nz

PROJECT :	Cold Roof on Plywood Standard Detail - NOVA-SK FLAMELESS SYSTEM		
TITLE :	Window Gutter Detail		
NUMBER :	SNCRPs-D15a	SCALE :	NTS
DRAWN BY :	NKT	DATE :	21-Aug-2024
		REVISED :	
<p><small>Equus Waterproof Membrane Details are specially drawn for use by Local Authorities, Building Contractors, Equus Applicators, Architects and design professionals. All details are drawn to assist in the development of project specific details. Details may be modified where necessary to accommodate job specific requirements but must be approved by Equus Industries Ltd. All components must be supplied by Equus Industries Ltd. Equus reserves the right to alter or upgrade details at any time without prior notice.</small></p>			

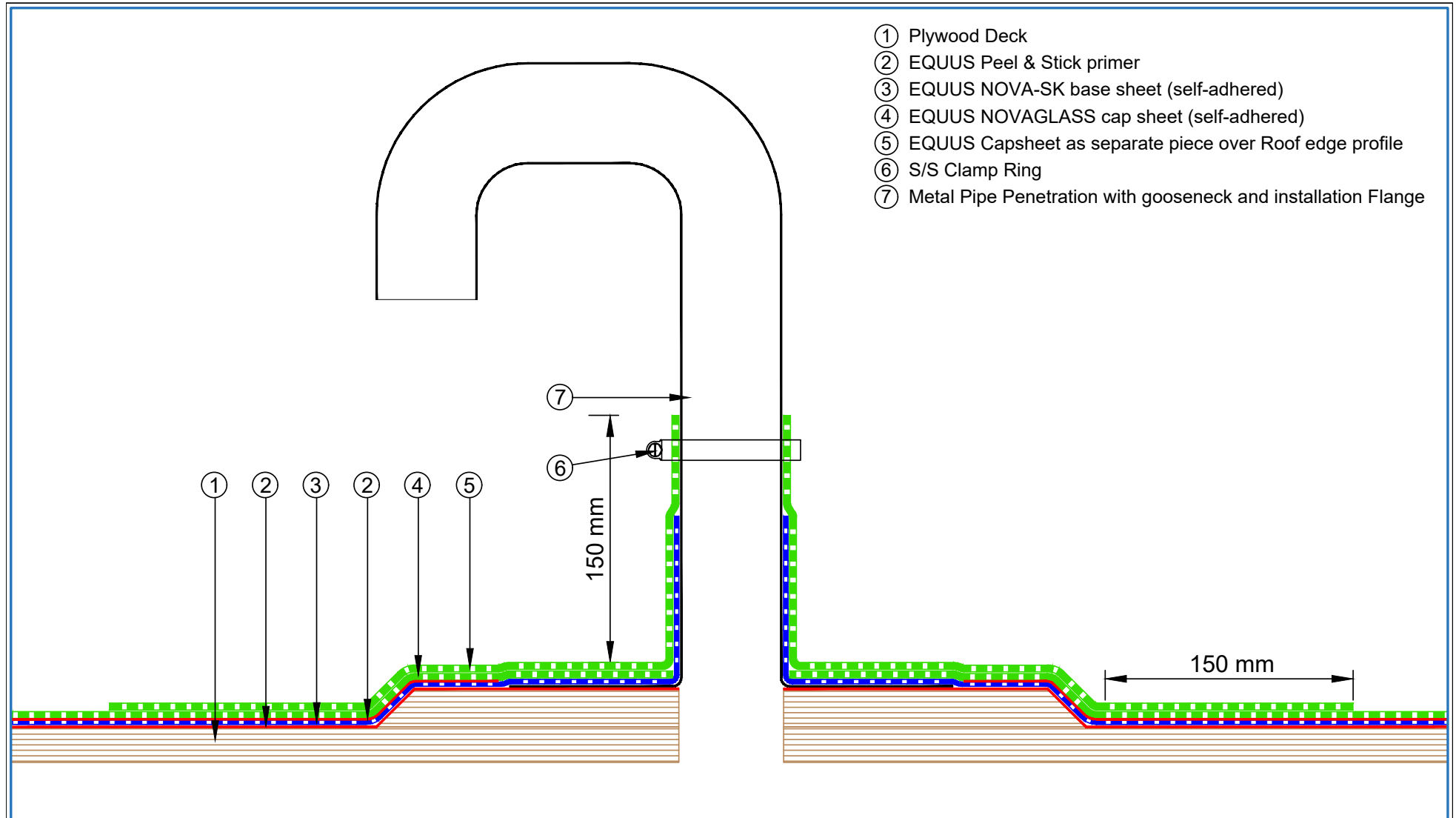
AUTHORISED DISTRIBUTOR
SOPREMA



- ① Plywood Deck
- ② EQUUS Peel & Stick primer
- ③ EQUUS NOVA-SK base sheet (self-adhered)
- ④ EQUUS NOVAGLASS cap sheet (self-adhered)
- ⑤ EQUUS Capsheet as separate piece over Roof edge profile
- ⑥ EQUUS SOPREMA Roof edge profile
- ⑦ Wall cladding and building wrap (by others)



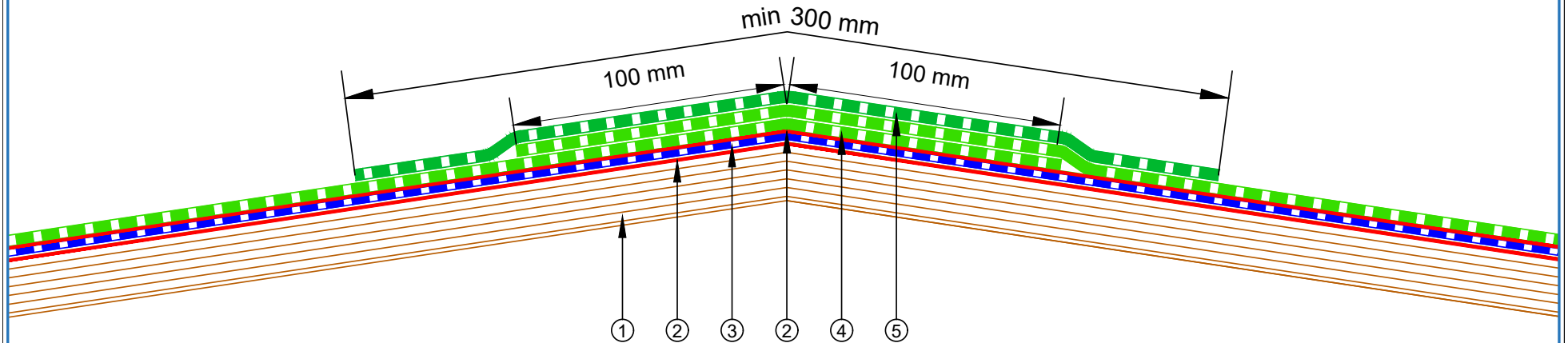
 E-mail : info@equus.nz Web : www.equus.co.nz	PROJECT :		Cold Roof on Plywood Standard Detail - NOVA-SK FLAMELESS SYSTEM	
	TITLE :		Verge Detail Without Upstand	
	NUMBER :	SNCRPs-D17a	SCALE :	NTS
	DRAWN BY :	NKT	DATE :	21-Aug-2024
			REVISED :	
Equus Waterproof Membrane Details are specially drawn for use by Local Authorities, Building Contractors, Equus Applicators, Architects and design professionals. All details are drawn to assist in the development of project specific details. Details may be modified where necessary to accommodate job specific requirements but must be approved by Equus Industries Ltd. All components must be supplied by Equus Industries Ltd. Equus reserves the right to alter or upgrade details at any time without prior notice.				



- ① Plywood Deck
- ② EQUUS Peel & Stick primer
- ③ EQUUS NOVA-SK base sheet (self-adhered)
- ④ EQUUS NOVAGLASS cap sheet (self-adhered)
- ⑤ EQUUS Capsheet as separate piece over Roof edge profile
- ⑥ S/S Clamp Ring
- ⑦ Metal Pipe Penetration with gooseneck and installation Flange

 E-mail : info@equus.nz Web : www.equus.co.nz	PROJECT :		Cold Roof on Plywood Standard Detail - NOVA-SK FLAMELESS SYSTEM		 AUTHORISED DISTRIBUTOR SOPREMA		
	TITLE :		Pipe Penetration Solar PV Power Conduit				
	NUMBER :	SNCRPs-D18a	SCALE :	NTS			
	DRAWN BY :	NKT	DATE :	21-Aug-2024		REVISED :	
	<small>Equus Waterproof Membrane Details are specially drawn for use by Local Authorities, Building Contractors, Equus Applicators, Architects and design professionals. All details are drawn to assist in the development of project specific details. Details may be modified where necessary to accommodate job specific requirements but must be approved by Equus Industries Ltd. All components must be supplied by Equus Industries Ltd. Equus reserves the right to alter or upgrade details at any time without prior notice.</small>						

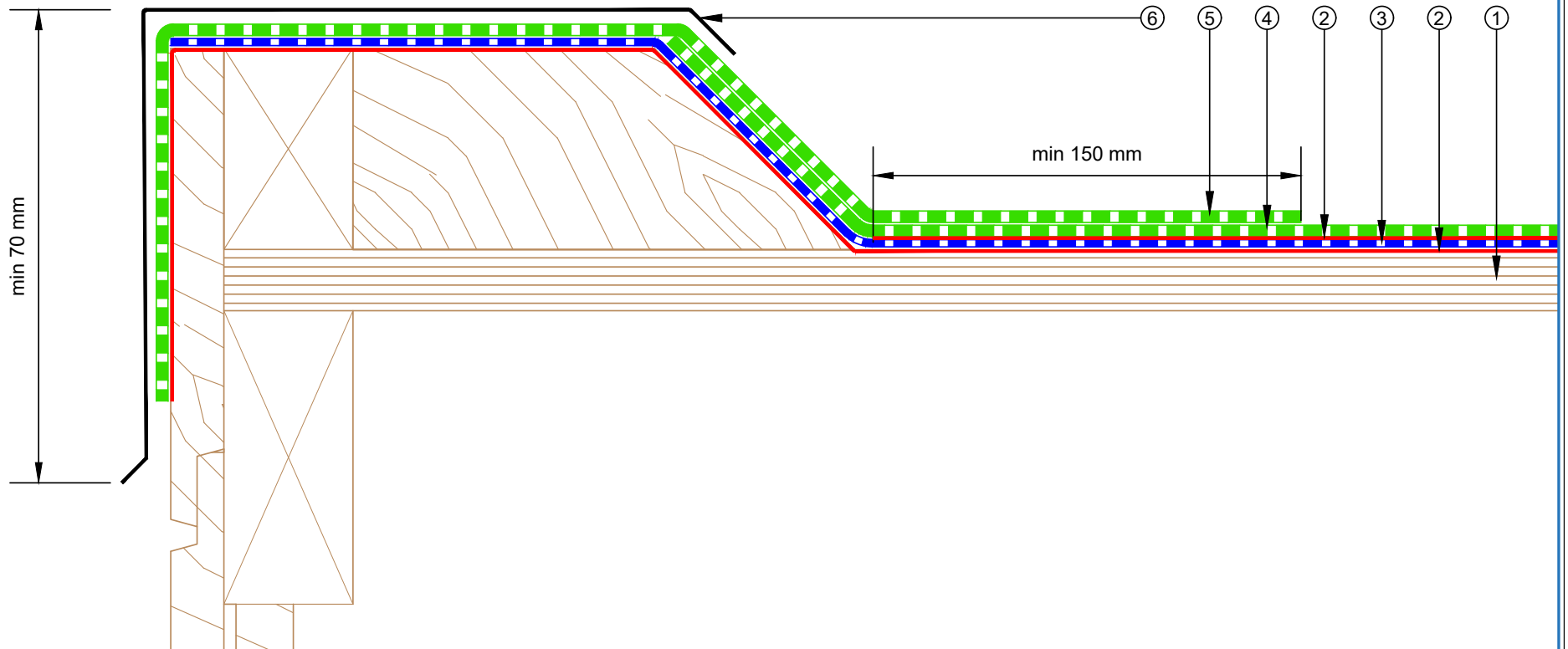
- ① Plywood Deck
- ② EQUUS Peel & Stick primer
- ③ EQUUS NOVA-SK base sheet (self-adhered)
- ④ EQUUS NOVAGLASS cap sheet (self-adhered)
- ⑤ Equus cap sheet, Cover Strip



PROJECT :	Cold Roof on Plywood Standard Detail - NOVA-SK FLAMELESS SYSTEM		
TITLE :	Ridge Waterproofing		
NUMBER :	SNCRPs-D19a	SCALE :	NTS
DRAWN BY :	NKT	DATE :	21-Aug-2024
		REVISED :	
<p><small>Equus Waterproof Membrane Details are specially drawn for use by Local Authorities, Building Contractors, Equus Applicators, Architects and design professionals. All details are drawn to assist in the development of project specific details. Details may be modified where necessary to accommodate job specific requirements but must be approved by Equus Industries Ltd. All components must be supplied by Equus Industries Ltd. Equus reserves the right to alter or upgrade details at any time without prior notice.</small></p>			

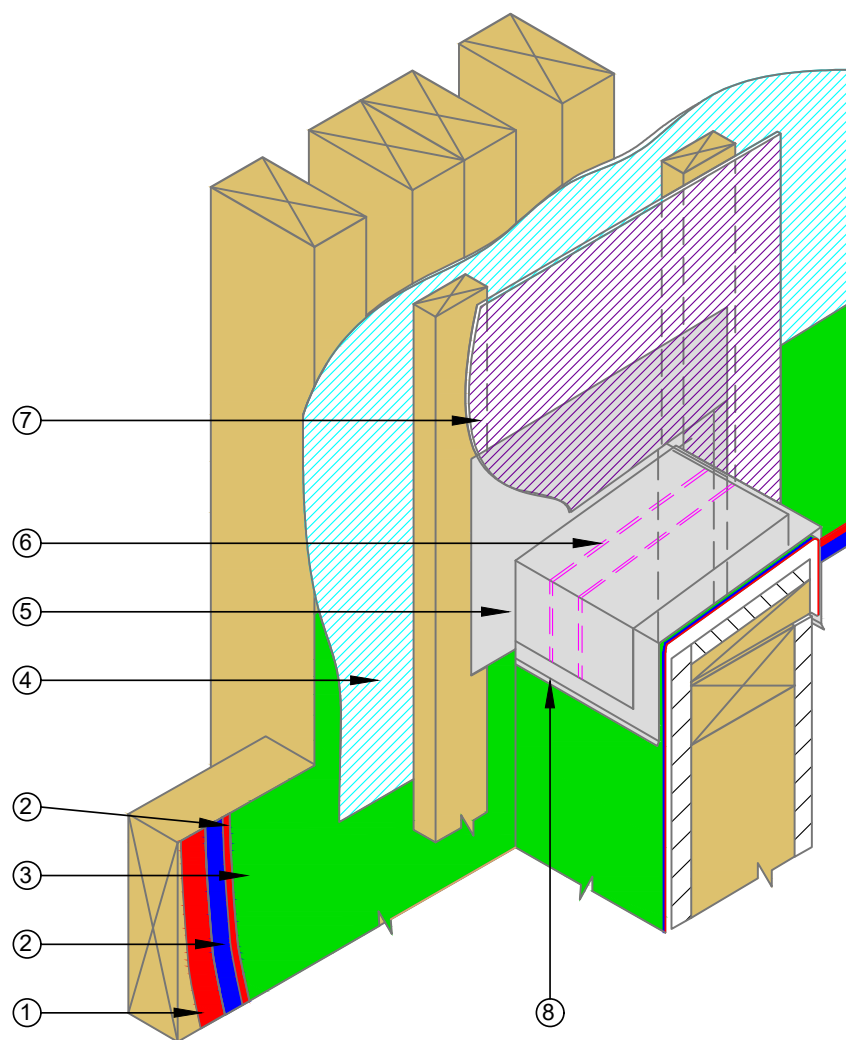


- ① Plywood Deck
- ② EQUUS Peel & Stick primer
- ③ EQUUS NOVA-SK base sheet (self-adhered)
- ④ EQUUS NOVAGLASS cap sheet (self-adhered)
- ⑤ SOPREMA cap sheet as separate piece over plywood plinth
- ⑥ Roof edge flashing (by others)

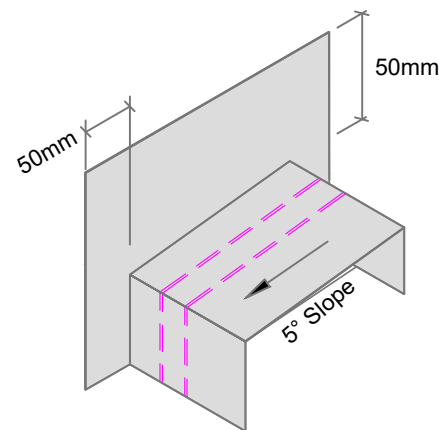


PROJECT :	Cold Roof on Plywood Standard Detail - NOVA-SK FLAMELESS SYSTEM		
TITLE :	Roof Edge Detail		
NUMBER :	SNCRPs-D20a	SCALE :	NTS
DRAWN BY :	NKT	DATE :	21-Aug-2024
		REVISED :	
<p><small>Equus Waterproof Membrane Details are specially drawn for use by Local Authorities, Building Contractors, Equus Applicators, Architects and design professionals. All details are drawn to assist in the development of project specific details. Details may be modified where necessary to accommodate job specific requirements but must be approved by Equus Industries Ltd. All components must be supplied by Equus Industries Ltd. Equus reserves the right to alter or upgrade details at any time without prior notice.</small></p>			





- ① EQUUS Peel & Stick primer
- ② EQUUS NOVA-SK base sheet (self-adhered)
- ③ EQUUS NOVAGLASS cap sheet (self-adhered)
- ④ Wall Underlay behind cavity, Finish over waterproofing membrane
- ⑤ Saddle Flashing over cavity batten, directly behind cladding
- ⑥ Compatible Sealant Bead x 2 for Parapet Cap
- ⑦ Cladding to seal to saddle flashing
- ⑧ Metal Cap flashing to seal to saddle flashing



E-mail : info@equus.nz
Web : www.equus.co.nz

PROJECT :	Cold Roof on Plywood Standard Detail - NOVA-SK FLAMELESS SYSTEM		
TITLE :	Saddle Flashing Detail		
NUMBER :	SDCRPs-D24a	SCALE :	NTS
DRAWN BY :	NKT	DATE :	21-Aug-2024
EQUUS Waterproof Membrane Details are specially drawn for use by Local Authorities, Building Contractors, Equus Applicators, Architects and design professionals. All details are drawn to assist in the development of project specific details. Details may be modified where necessary to accommodate job specific requirements but must be approved by Equus Industries Ltd. All components must be supplied by Equus Industries Ltd. Equus reserves the right to alter or upgrade details at any time without prior notice.		REVISED :	

