



EQUUS MONOPUR SL FLOORING SYSTEM

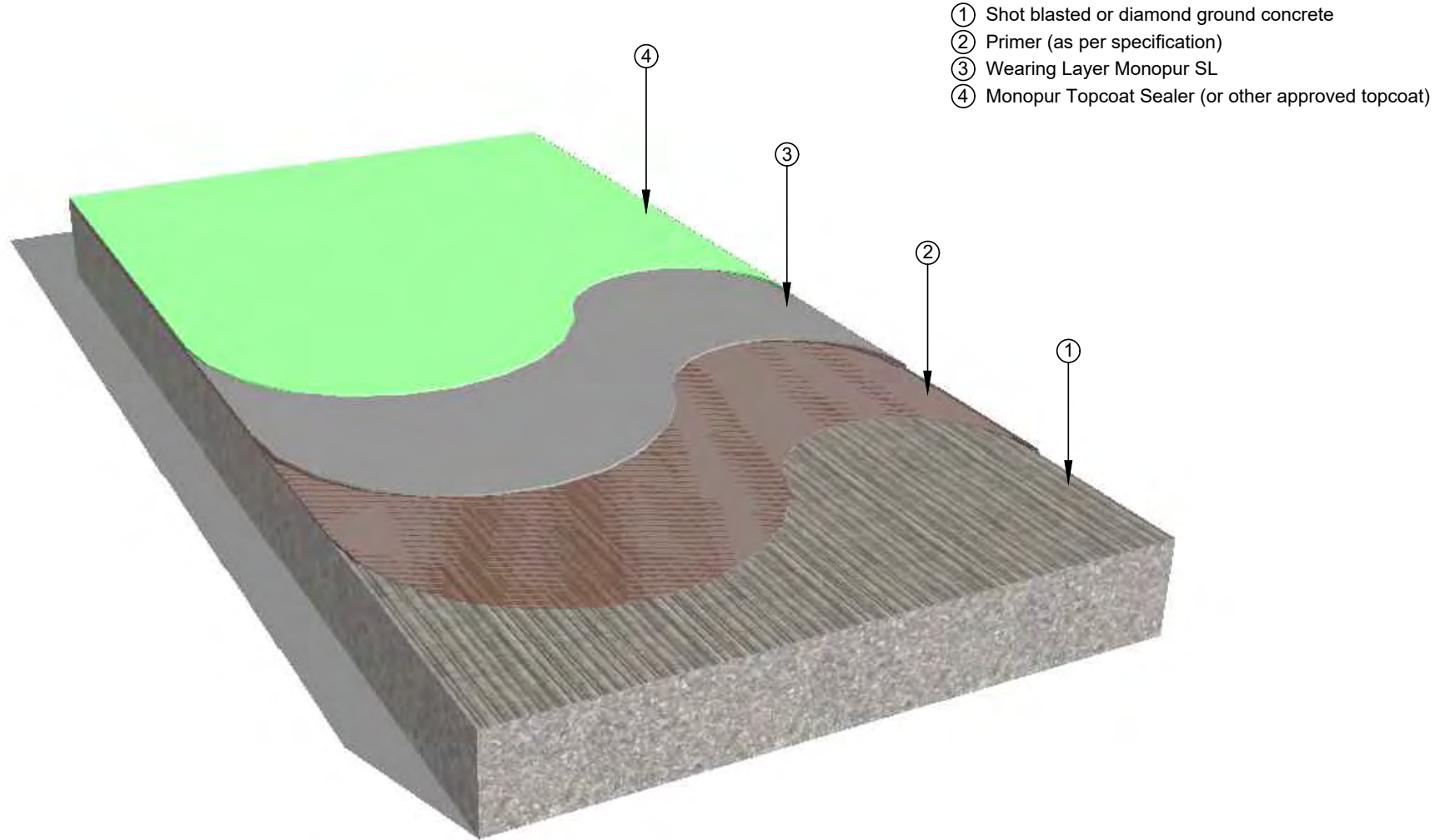
Standard Details



OCTOBER 2024

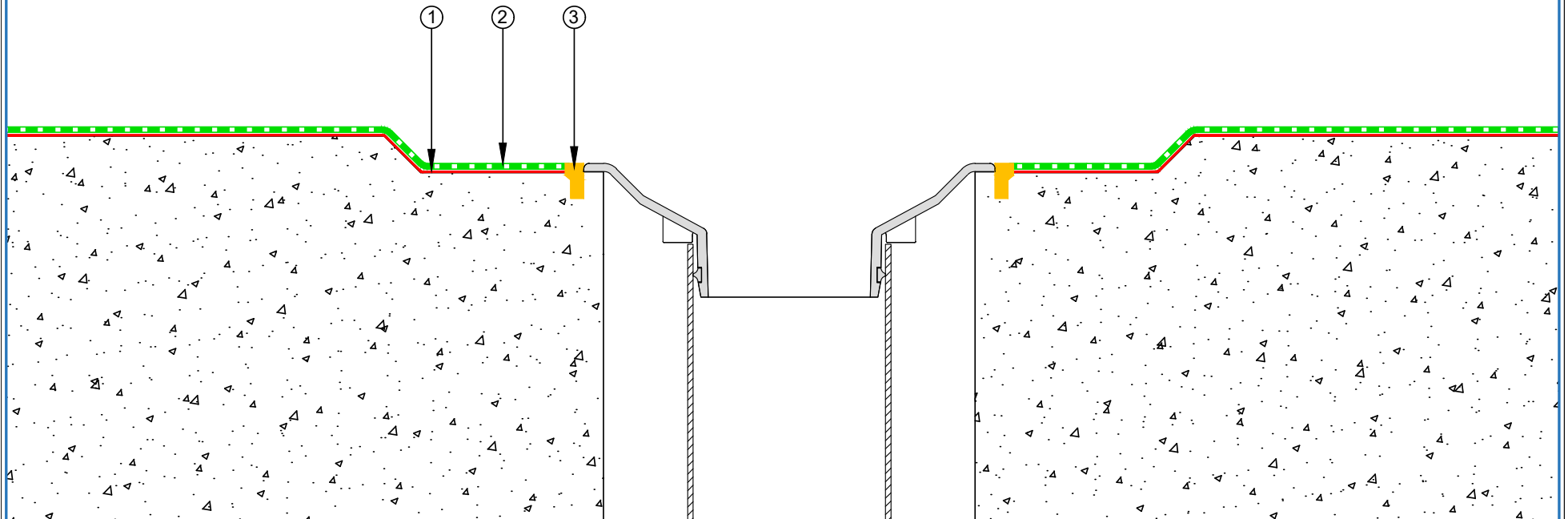
CONTENTS


EMSL-D1	Floor coating Build Up (3D)	1
EMSL-D2	Floor Drain	2
EMSL-D3	Concrete Plinth	3
EMSL-D4	Nib Detail	4
EMSL-D5	Channel Drain	5
EMSL-D7	Standard Fixing	6
EMSL-D7b	Typical Plinth	7
EMSL-D8	Penetration Detail	8
EMSL-D9a	Coves and Connections to Vertical Surfaces	9
EMSL-D11b	Perimeter Drain	10
EMSL-D13	Door Threshold	11
EMSL-D14	Typical Detail	12



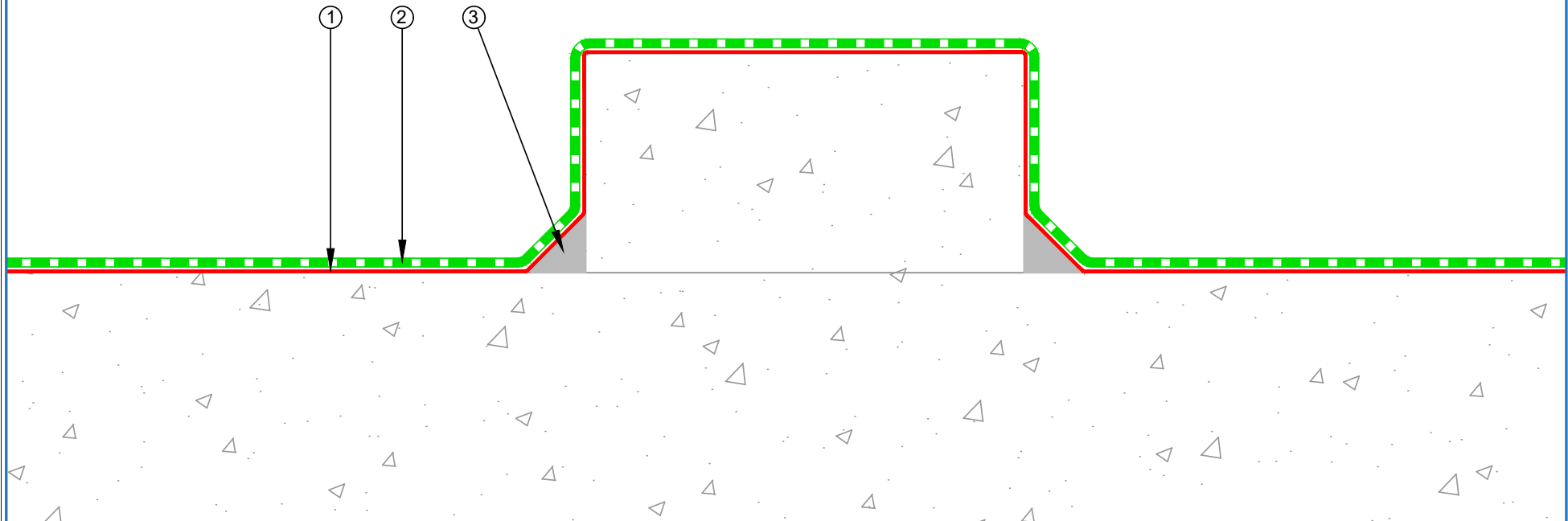
PRODUCT :	EQUUS Monopur SL Flooring to Concrete Substrate		
TITLE :	Floor coating build up (3D)		
NUMBER :	EMSL-D1	SCALE :	NTS
DRAWN BY :	NKT	DATE :	16-Sep-2024
		REVISED :	
<p>Equis standard details are especially drawn for use by Local Authorities, Building Contractors, Equis Applicators, Architects and design professionals. All details are drawn to assist in the development of project-specific details. Details may be modified where necessary to accommodate job-specific requirements but must be approved by Equis Industries Ltd. All components must be supplied by Equis Industries Ltd. Equis reserves the right to alter or upgrade details at any time without prior notice.</p>			


- ① Primer (optional)
- ② Monopur SL Flooring
- ③ Matacryn LM (or other approved sealant)

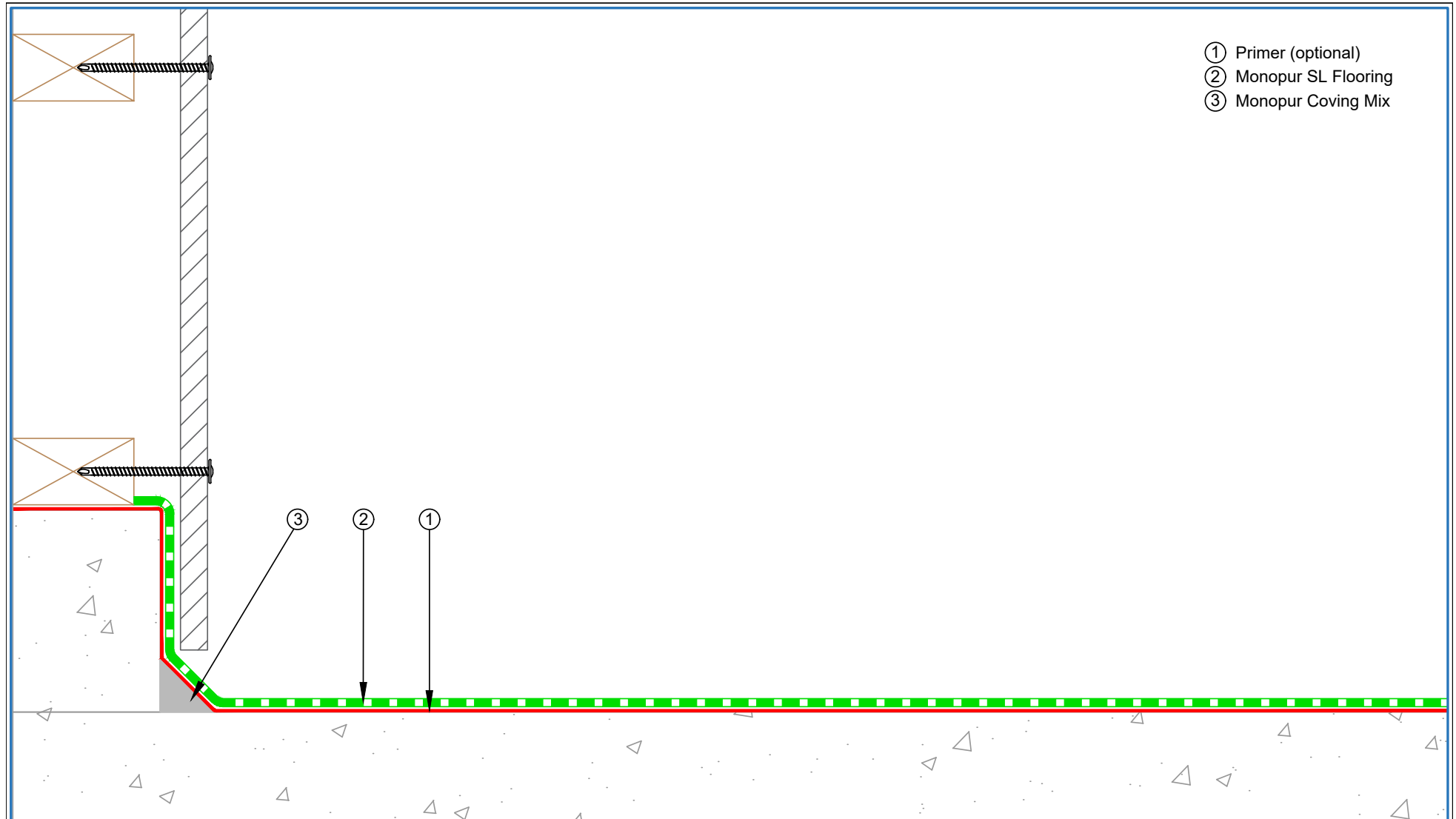


 E-mail : info@equus.nz Web : www.equus.nz	PRODUCT :	EQUUS Monopur SL Flooring to Concrete Substrate		
	TITLE :	Floor drain detail		
	NUMBER :	EMSL-D2	SCALE :	NTS
	DRAWN BY :	NKT	DATE :	16-Sep-2024
	Revised :			
Equus standard details are especially drawn for use by Local Authorities, Building Contractors, Equus Applicators, Architects and design professionals. All details are drawn to assist in the development of project-specific details. Details may be modified where necessary to accommodate job-specific requirements but must be approved by Equus Industries Ltd. All components must be supplied by Equus Industries Ltd. Equus reserves the right to alter or upgrade details at any time without prior notice.				


- ① Primer (optional)
- ② Monopur SL Flooring
- ③ Monopur Coving Mix



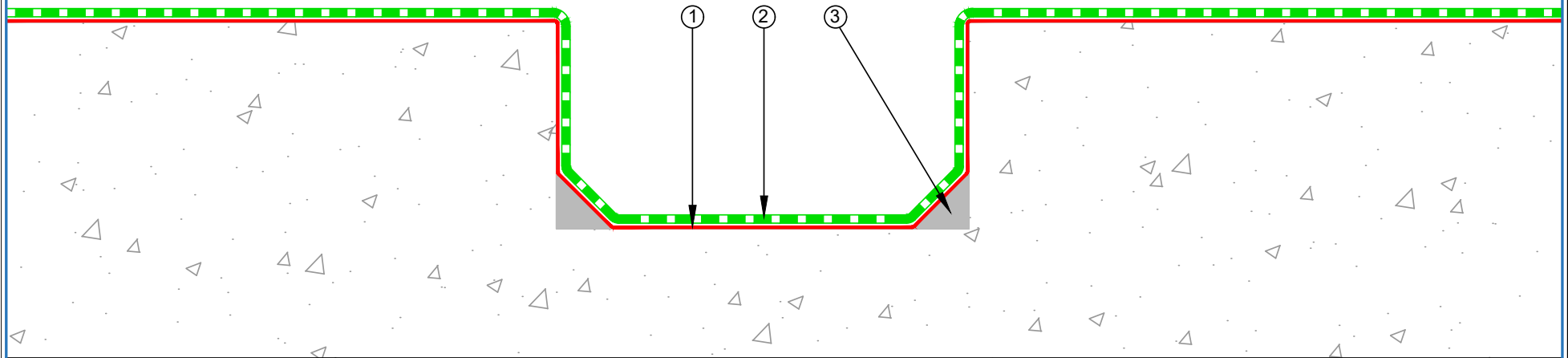
 E-mail : info@equus.nz Web : www.equus.nz	PRODUCT :	EQUUS Monopur SL Flooring to Concrete Substrate		
	TITLE :	Concrete plinth detail		
	NUMBER :	EMSL-D3	SCALE :	NTS
	DRAWN BY :	NKT	DATE :	16-Sep-2024
			REVISED :	
Equus standard details are especially drawn for use by Local Authorities, Building Contractors, Equus Applicators, Architects and design professionals. All details are drawn to assist in the development of project-specific details. Details may be modified where necessary to accommodate job-specific requirements but must be approved by Equus Industries Ltd. All components must be supplied by Equus Industries Ltd. Equus reserves the right to alter or upgrade details at any time without prior notice.				




- ① Primer (optional)
- ② Monopur SL Flooring
- ③ Monopur Coving Mix

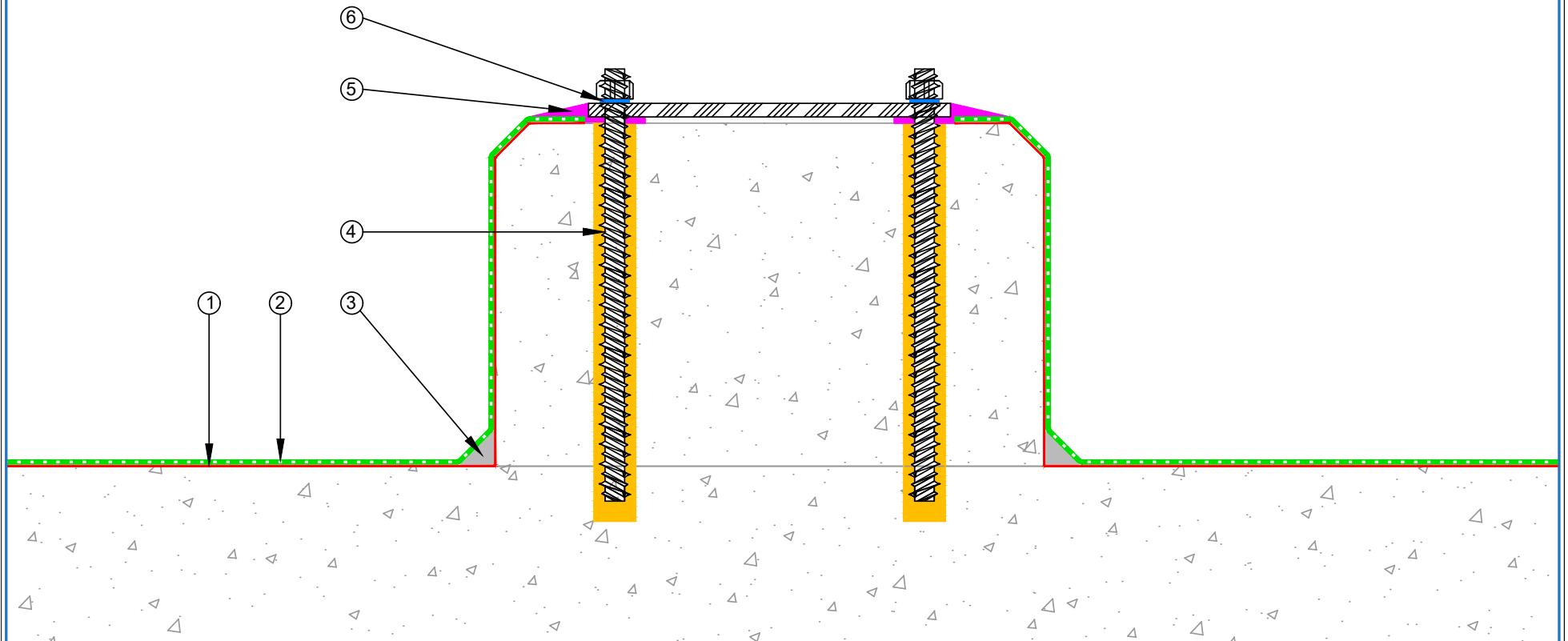
 E-mail : info@equus.nz Web : www.equus.nz	PRODUCT :	EQUUS Monopur SL Flooring to Concrete Substrate		
	TITLE :	Nib detail		
	NUMBER :	EMSL-D4	SCALE :	NTS
	DRAWN BY :	NKT	DATE :	16-Sep-2024
			REVISED :	
Equus standard details are especially drawn for use by Local Authorities, Building Contractors, Equus Applicators, Architects and design professionals. All details are drawn to assist in the development of project-specific details. Details may be modified where necessary to accommodate job-specific requirements but must be approved by Equus Industries Ltd. All components must be supplied by Equus Industries Ltd. Equus reserves the right to alter or upgrade details at any time without prior notice.				


- ① Primer (optional)
- ② Monopur SL Flooring
- ③ Monopur Coving Mix



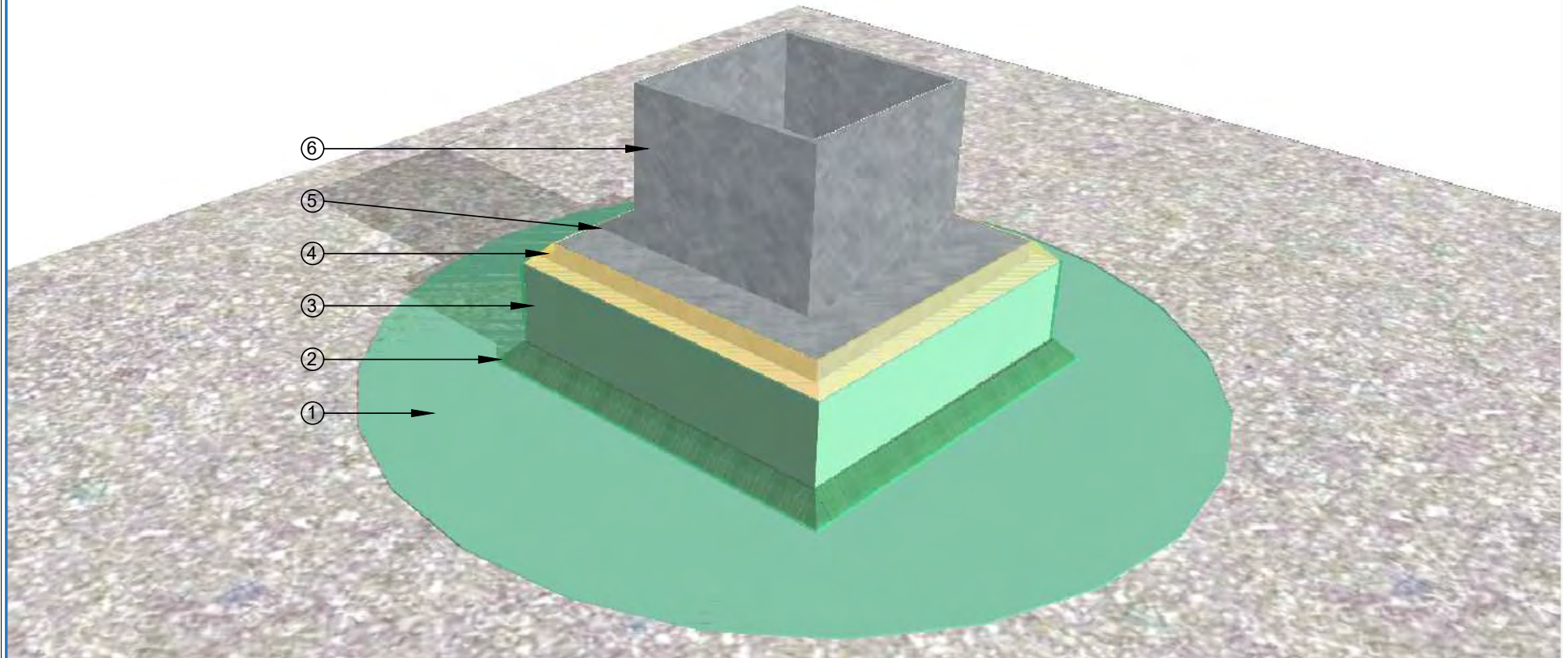
 E-mail : info@equus.nz Web : www.equus.nz	PRODUCT :	EQUUS Monopur SL Flooring to Concrete Substrate		
	TITLE :	Channel drain detail		
	NUMBER :	EMSL-D5	SCALE :	NTS
	DRAWN BY :	NKT	DATE :	16-Sep-2024
	Revised :			
Equus standard details are especially drawn for use by Local Authorities, Building Contractors, Equus Applicators, Architects and design professionals. All details are drawn to assist in the development of project-specific details. Details may be modified where necessary to accommodate job-specific requirements but must be approved by Equus Industries Ltd. All components must be supplied by Equus Industries Ltd. Equus reserves the right to alter or upgrade details at any time without prior notice.				

- ① Primer (optional)
- ② Monopur SL Flooring
- ③ Monopur Coving Mix
- ④ Chemset bolts
- ⑤ EQUUS Dymonic 100 sealant
- ⑥ Neoprene Washer



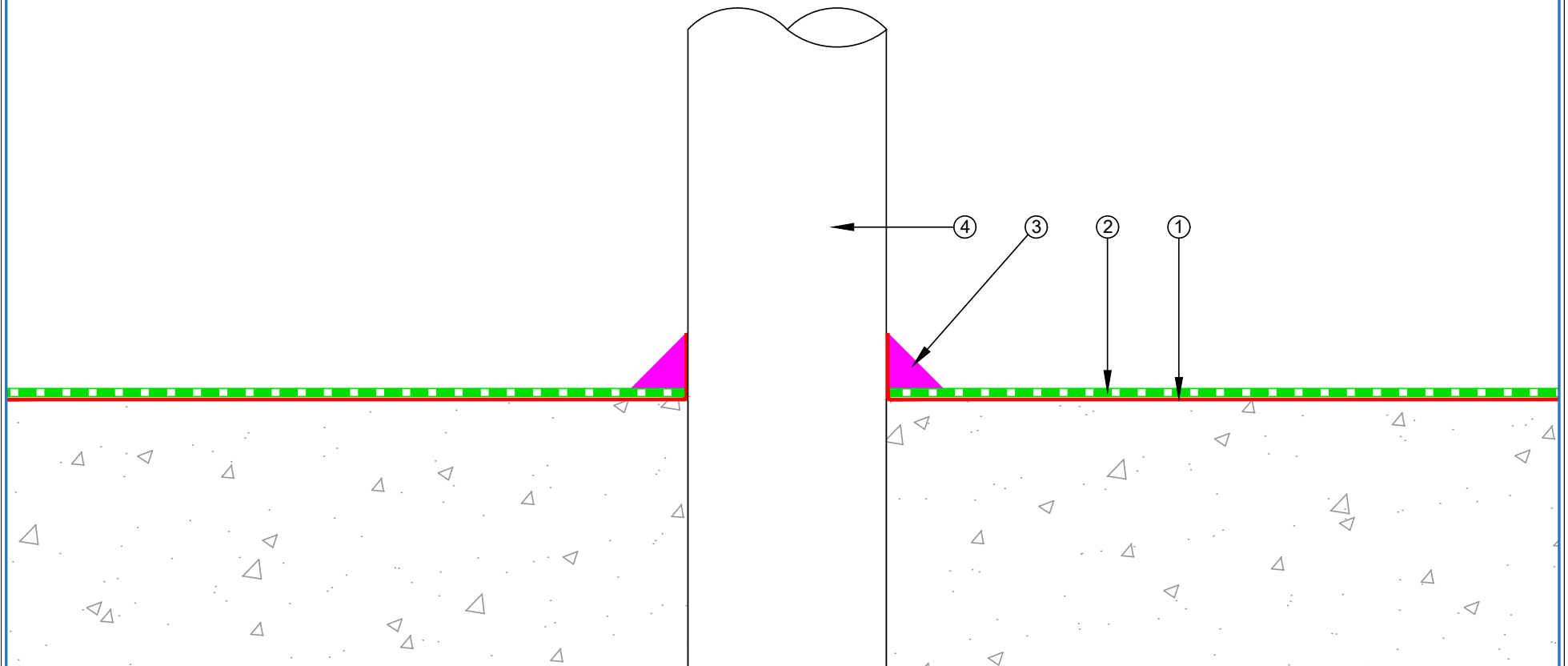
 E-mail : info@equus.nz Web : www.equus.nz	PRODUCT :	EQUUS Monopur SL Flooring to Concrete Substrate		
	TITLE :	Standard fixing detail		
	NUMBER :	EMSL-D7	SCALE :	NTS
	DRAWN BY :	NKT	DATE :	16-Sep-2024
			REVISED :	
Equus standard details are especially drawn for use by Local Authorities, Building Contractors, Equus Applicators, Architects and design professionals. All details are drawn to assist in the development of project-specific details. Details may be modified where necessary to accommodate job-specific requirements but must be approved by Equus Industries Ltd. All components must be supplied by Equus Industries Ltd. Equus reserves the right to alter or upgrade details at any time without prior notice.				


- ① Monopur SL Flooring on concrete substrate
- ② Monopur Cove
- ③ Solid Monopur plinth
- ④ EQUUS Dymonic 100 sealant
- ⑤ Steel base plate bolted through Monopur plinth to concrete
- ⑥ Steel post



PRODUCT :	EQUUS Monopur SL Flooring to Concrete Substrate		
TITLE :	Typical Plinth Detail		
NUMBER :	EMSL-D7b	SCALE :	NTS
DRAWN BY :	NKT	DATE :	16-Sep-2024
Equus standard details are especially drawn for use by Local Authorities, Building Contractors, Equus Applicators, Architects and design professionals. All details are drawn to assist in the development of project-specific details. Details may be modified where necessary to accommodate job-specific requirements but must be approved by Equus Industries Ltd. All components must be supplied by Equus Industries Ltd. Equus reserves the right to alter or upgrade details at any time without prior notice.			

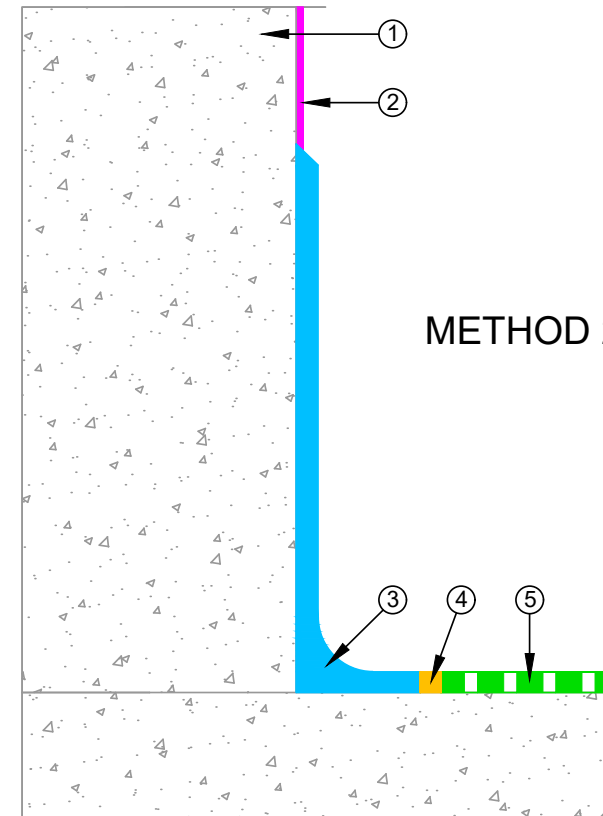
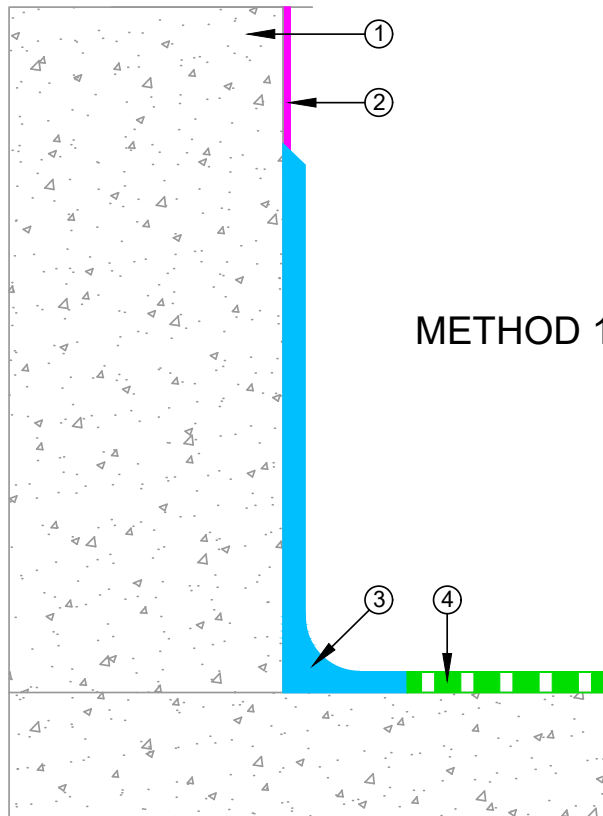
- ① Primer (optional)
- ② Monopur SL Flooring
- ③ Equus Dymonic 100 sealant
- ④ Penetration



 E-mail : info@equus.nz Web : www.equus.nz	PRODUCT :	EQUUS Monopur SL Flooring to Concrete Substrate		
	TITLE :	Penetration detail		
	NUMBER :	EMSL-D8	SCALE :	NTS
	DRAWN BY :	NKT	DATE :	16-Sep-2024
			REVISED :	
Equus standard details are especially drawn for use by Local Authorities, Building Contractors, Equus Applicators, Architects and design professionals. All details are drawn to assist in the development of project-specific details. Details may be modified where necessary to accommodate job-specific requirements but must be approved by Equus Industries Ltd. All components must be supplied by Equus Industries Ltd. Equus reserves the right to alter or upgrade details at any time without prior notice.				

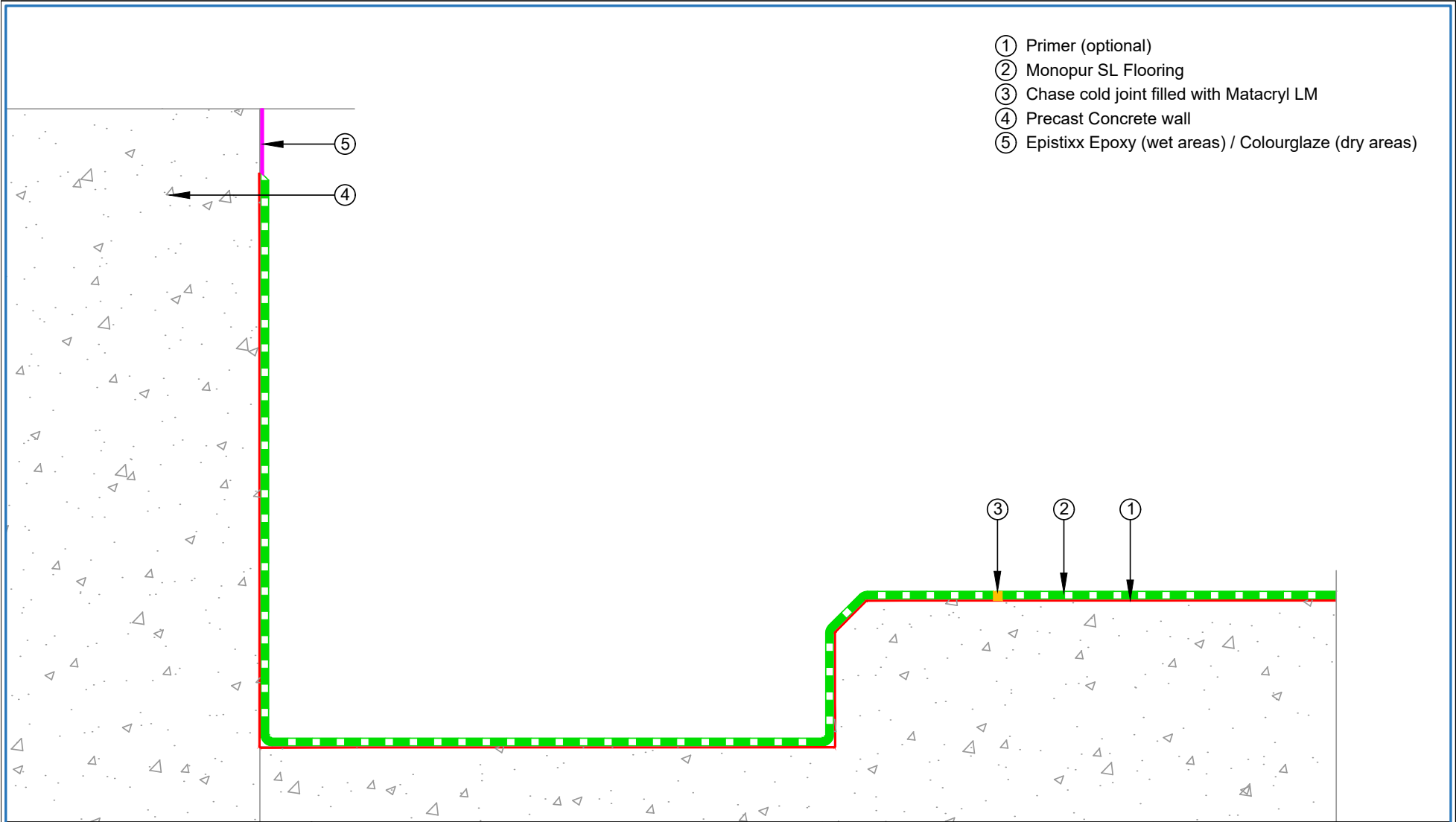
- ① Precast Concrete Wall
- ② Epistixx Epoxy (wet areas) / Colourglaze (dry areas)
- ③ Monopur Cove, Height = 400mm, Radius 30-40mm
- ④ Monopur SL Flooring

- ① Precast Concrete Wall
- ② Epistixx Epoxy (wet areas) / Colourglaze (dry areas)
- ③ Monopur Cove, Height = 400mm, Radius 30-40mm
- ④ Chase cold joint filled with Matacry LM or approved sealant
- ⑤ Monopur SL Flooring




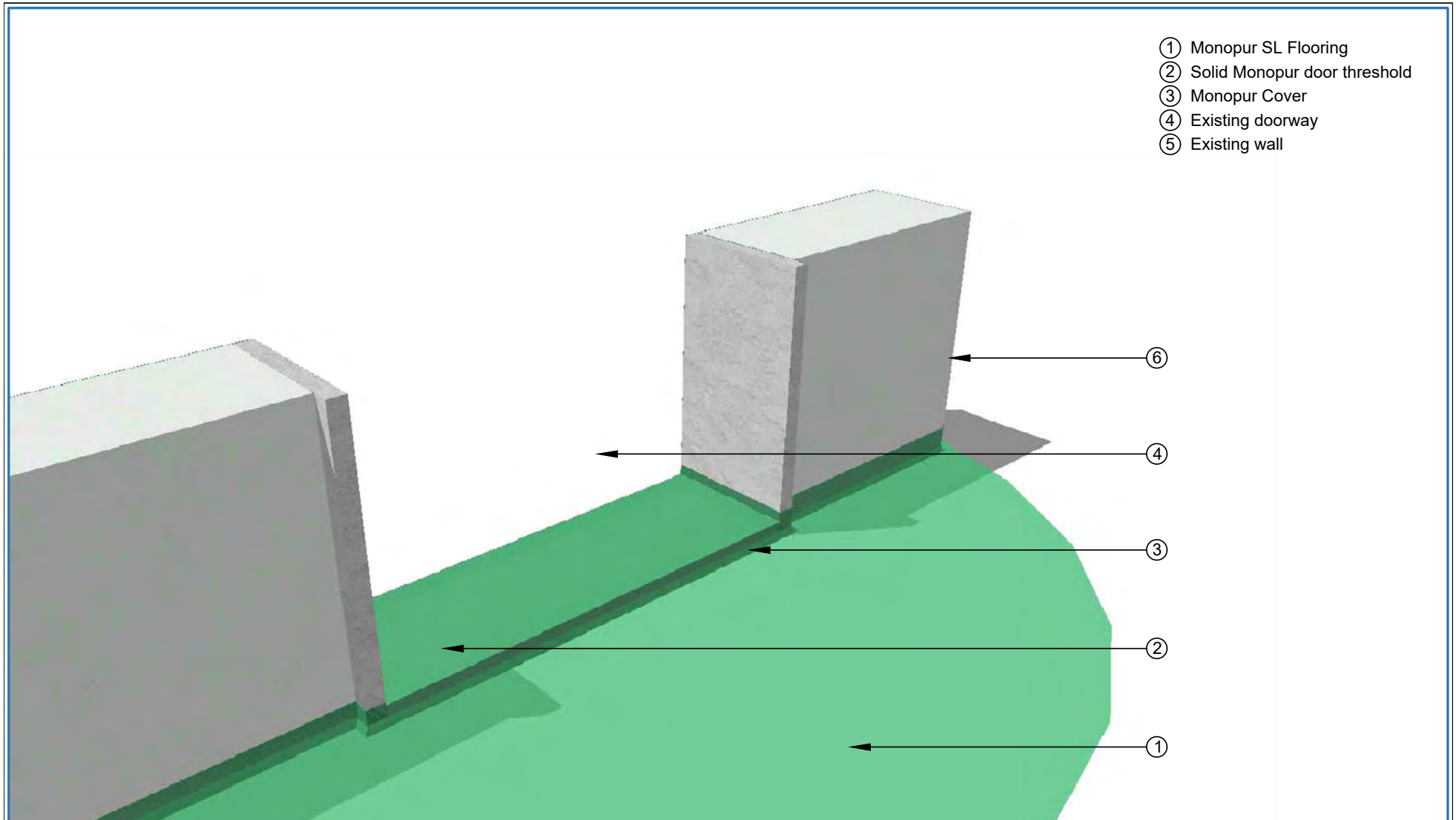
PRODUCT :	EQUUS Monopur SL Flooring to Concrete Substrate		
TITLE :	Coves and connections to vertical surfaces detail		
NUMBER :	EMSL-D9a	SCALE :	NTS
DRAWN BY :	NKT	DATE :	16-Sep-2024
		REVISED :	


Equus standard details are especially drawn for use by Local Authorities, Building Contractors, Equus Applicators, Architects and design professionals. All details are drawn to assist in the development of project-specific details. Details may be modified where necessary to accommodate job-specific requirements but must be approved by Equus Industries Ltd. All components must be supplied by Equus Industries Ltd. Equus reserves the right to alter or upgrade details at any time without prior notice.



- ① Primer (optional)
- ② Monopur SL Flooring
- ③ Chase cold joint filled with Matacryn LM
- ④ Precast Concrete wall
- ⑤ Epistixx Epoxy (wet areas) / Colouglaze (dry areas)

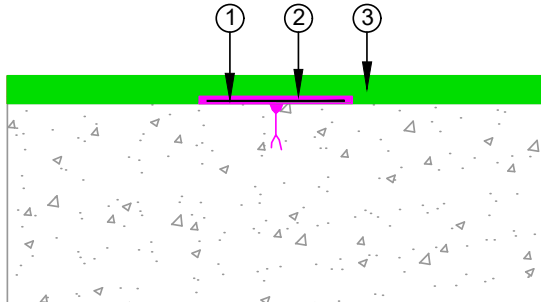
 E-mail : info@equus.nz Web : www.equus.nz	PRODUCT :	EQUUS Monopur SL Flooring to Concrete Substrate		
	TITLE :	Perimeter drain detail		
	NUMBER :	EMSL-D11b	SCALE :	NTS
	DRAWN BY :	NKT	DATE :	16-Sep-2024
	REVISED :			
Equus standard details are especially drawn for use by Local Authorities, Building Contractors, Equus Applicators, Architects and design professionals. All details are drawn to assist in the development of project-specific details. Details may be modified where necessary to accommodate job-specific requirements but must be approved by Equus Industries Ltd. All components must be supplied by Equus Industries Ltd. Equus reserves the right to alter or upgrade details at any time without prior notice.				



 E-mail : info@equus.nz Web : www.equus.nz	PRODUCT :	EQUUS Monopur SL Flooring to Concrete Substrate		
	TITLE :	Door threshold Detail		
	NUMBER :	EMSL-D13	SCALE :	NTS
	DRAWN BY :	NKT	DATE :	16-Sep-2024
			REVISED :	
Equus standard details are especially drawn for use by Local Authorities, Building Contractors, Equus Applicators, Architects and design professionals. All details are drawn to assist in the development of project-specific details. Details may be modified where necessary to accommodate job-specific requirements but must be approved by Equus Industries Ltd. All components must be supplied by Equus Industries Ltd. Equus reserves the right to alter or upgrade details at any time without prior notice.				

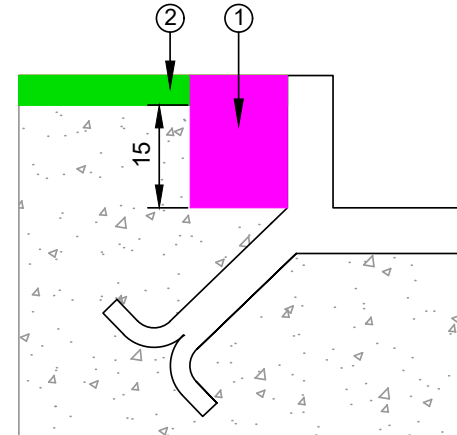
CRACK IN THE SUBSTRATE

- ① Fabric
- ② MATACRYL LM flexibled binder
- ③ MONOPUR Flooring System



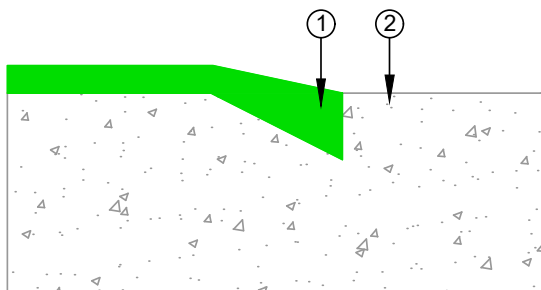
CONNECTIONS TO DRAINAGE SYSTEM & SUMPS

- ① Cut connection. Fill with MATACRYL LM flexibled resin
- ② MONOPUR Flooring System



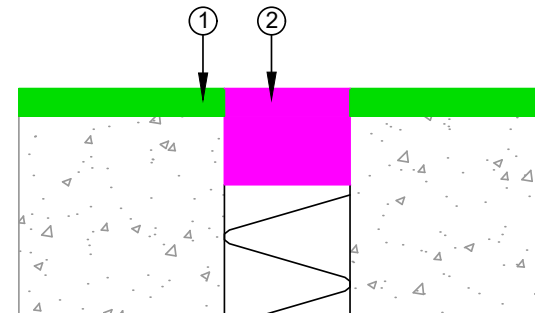
CONNECTION TO VERTICAL SURFACE
FREE CONNECTION AT THE DURACON FLOORING END

- ① MONOPUR Flooring System
- ② Connecting area



Expansion Joints

- ① MONOPUR Flooring System
- ② Approved Sealant



PRODUCT :	EQUUS Monopur SL Flooring to Concrete Substrate		
TITLE :	Typical Detail		
NUMBER :	EMSL-D14	SCALE :	NTS
DRAWN BY :	NKT	DATE :	16-Sep-2024
REVISED :			

Equus standard details are especially drawn for use by Local Authorities, Building Contractors, Equus Applicators, Architects and design professionals. All details are drawn to assist in the development of project-specific details. Details may be modified where necessary to accommodate job-specific requirements but must be approved by Equus Industries Ltd. All components must be supplied by Equus Industries Ltd. Equus reserves the right to alter or upgrade details at any time without prior notice.