



EQUUS MATACRYL CARPARK SYSTEM

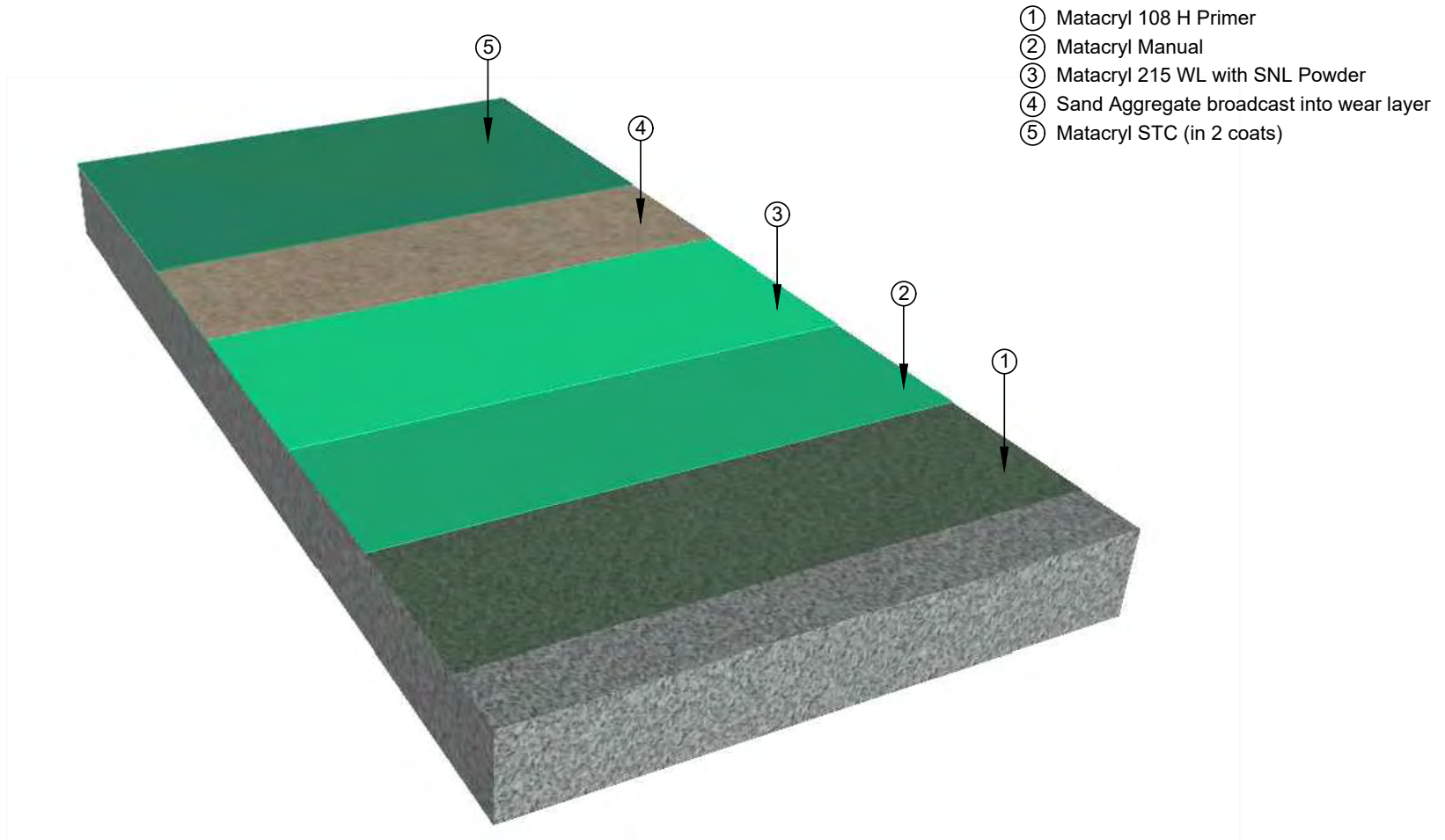
Standard Details



FEBRUARY 2025

CONTENTS

EMC-D1	Build Up	1
EMC-D2	Kerb Slab Edge	2
EMC-D3	Termination at Top of Ramp	3
EMC-D5	Drain	4
EMC-D6	Light Post	5
EMC-D7	Top Fix Rail	6
EMC-D8	Crack Addressing	7
EMC-D9	Stair Lift Shaft	8
EMC-D10	Wheelstop Fixing	9
EMC-D11	Door Threshold	10
EMC-D12	Kerb at PC Panel	11

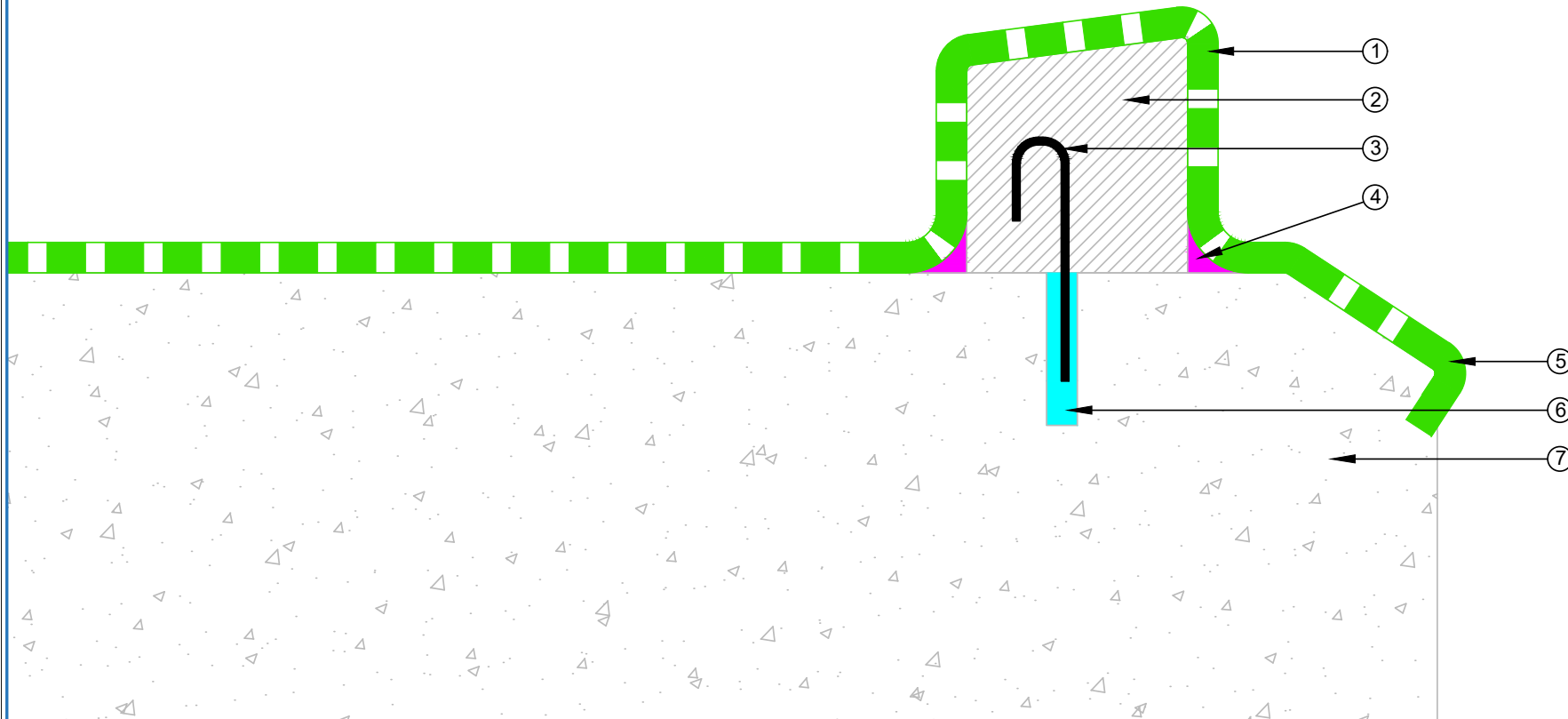



- ① Matacryl 108 H Primer
- ② Matacryl Manual
- ③ Matacryl 215 WL with SNL Powder
- ④ Sand Aggregate broadcast into wear layer
- ⑤ Matacryl STC (in 2 coats)

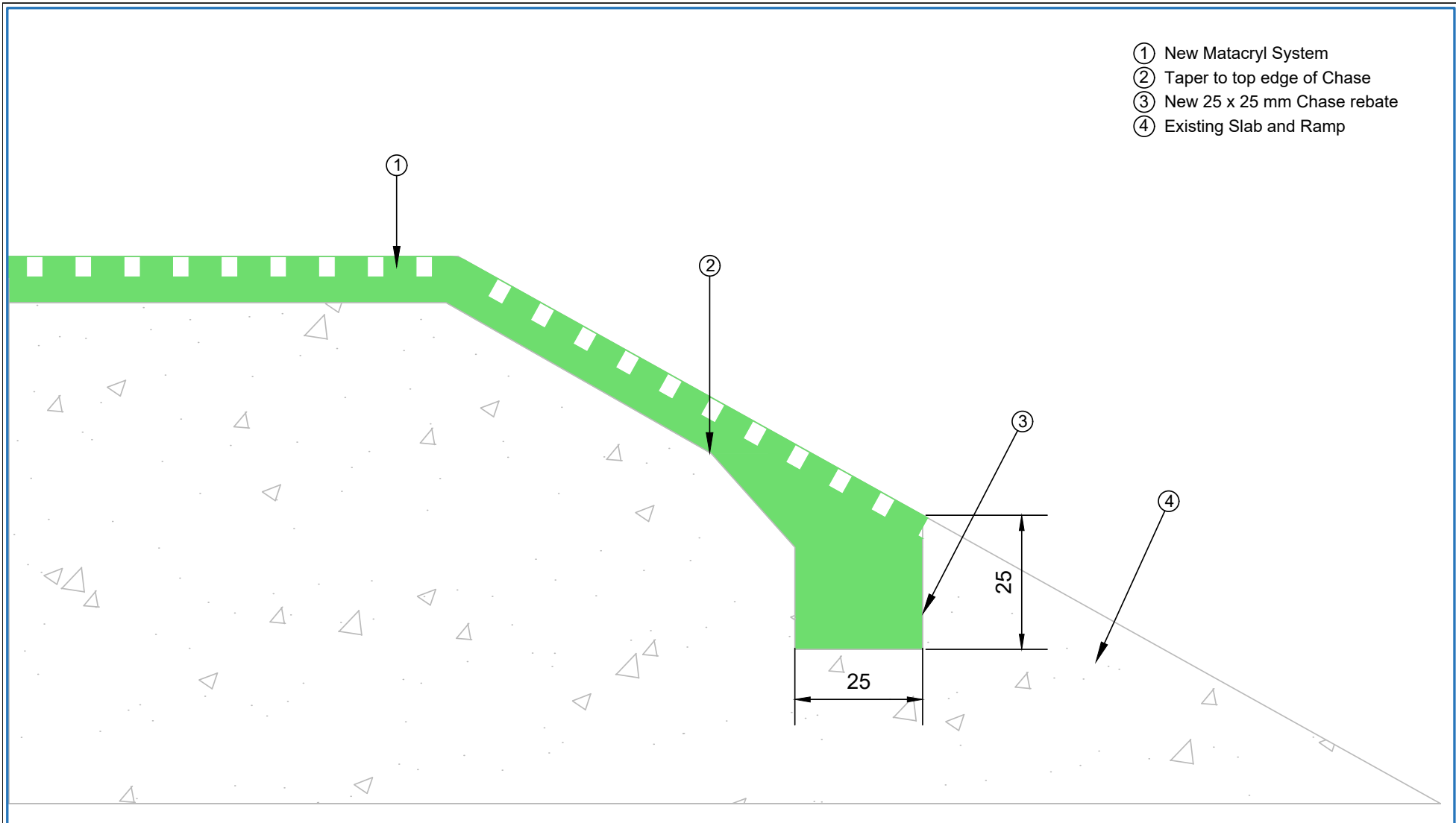


SYSTEM :	Matacryl Waterproofing System on Concrete Substrate		
TITLE :	Matacryl Carpark Waterproofing Build Up		
NUMBER :	EMC-D1	SCALE :	NTS
DRAWN BY :	NKT	DATE :	09-SEP-2024
<small>Equus standard details are especially drawn for use by Local Authorities, Building Contractors, Equus Applicators, Architects and design professionals. All details are drawn to assist in the development of project-specific details. Details may be modified where necessary to accommodate job-specific requirements but must be approved by Equus Industries Ltd. All components must be supplied by Equus Industries Ltd. Equus reserves the right to alter or upgrade details at any time without prior notice.</small>			


- ① Matacryl System
- ② Kerb
- ③ DH12
- ④ Rlglet or chase to "ANCHOR" membrane filled with Matacryl
- ⑤ Sealant Cove
- ⑥ Chemset / Epoxy
- ⑦ Concrete Slab



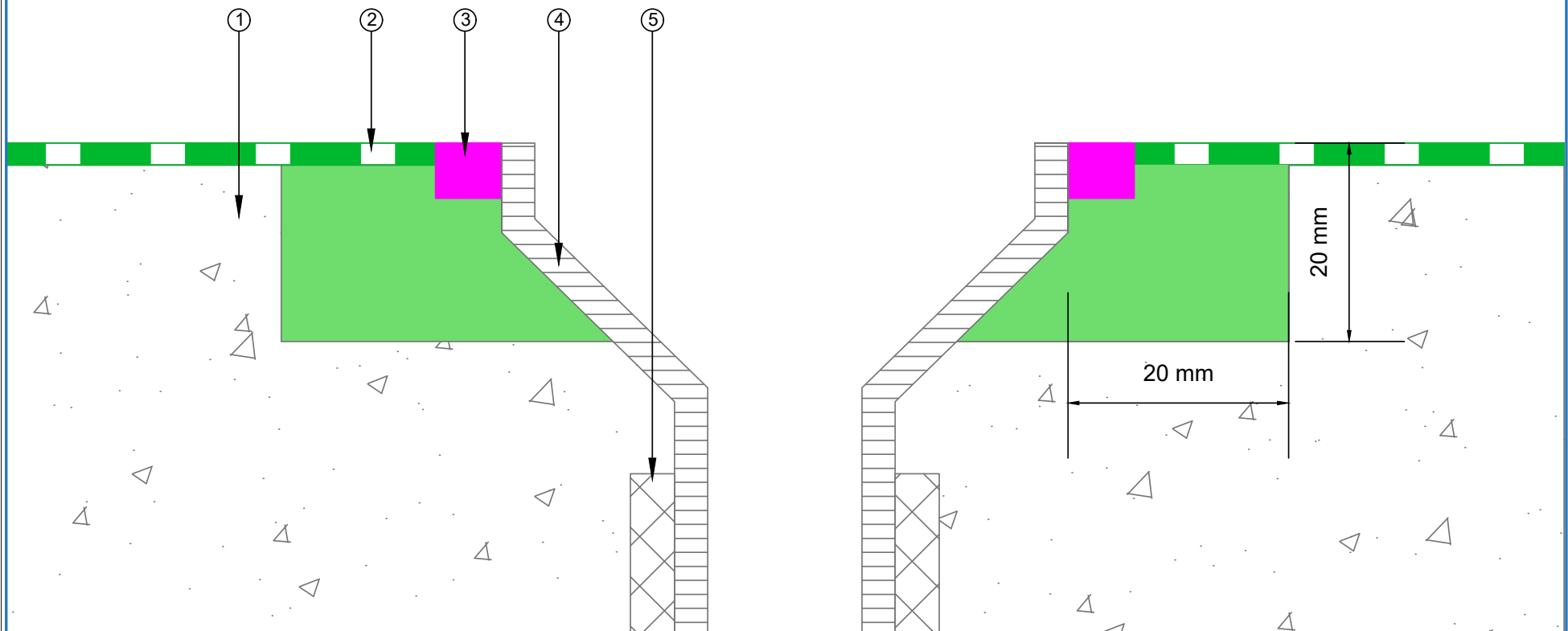
 E-mail : info@equus.nz Web : www.equus.nz	PRODUCT :	Matacryl Waterproofing System on Concrete Substrate		
	TITLE :	Kerb Slab Edge - Carpark System		
	NUMBER :	EMC-D2	SCALE :	NTS
	DRAWN BY :	NKT	DATE :	09-SEP-2024
			REVISED :	
Equus standard details are especially drawn for use by Local Authorities, Building Contractors, Equus Applicators, Architects and design professionals. All details are drawn to assist in the development of project-specific details. Details may be modified where necessary to accommodate job-specific requirements but must be approved by Equus Industries Ltd. All components must be supplied by Equus Industries Ltd. Equus reserves the right to alter or upgrade details at any time without prior notice.				



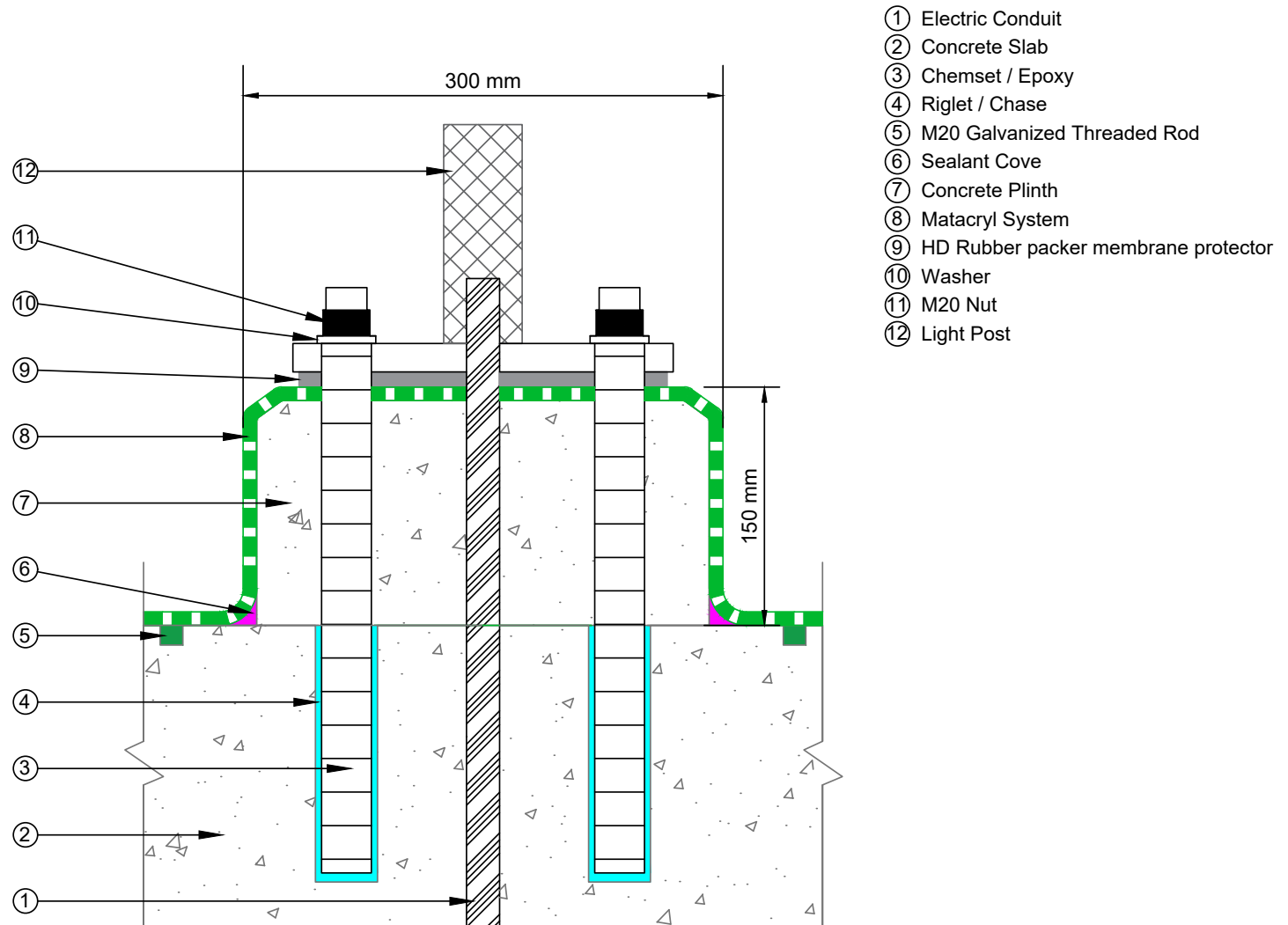
- ① New Matacryl System
- ② Taper to top edge of Chase
- ③ New 25 x 25 mm Chase rebate
- ④ Existing Slab and Ramp

 E-mail : info@equus.nz Web : www.equus.nz	PRODUCT :		Matacryl Waterproofing System on Concrete Substrate		
	TITLE :		Termination at top of ramp - Carpark System		
	NUMBER :		EMC-D3	SCALE :	NTS
	DRAWN BY :		NKT	DATE :	09-SEP-2024
	REVISED :				
Equus standard details are especially drawn for use by Local Authorities, Building Contractors, Equus Applicators, Architects and design professionals. All details are drawn to assist in the development of project-specific details. Details may be modified where necessary to accommodate job-specific requirements but must be approved by Equus Industries Ltd. All components must be supplied by Equus Industries Ltd. Equus reserves the right to alter or upgrade details at any time without prior notice.					

- ① Concrete Slab
- ② Matacryl System
- ③ Matacryl LM Sealant 8 mm wide x 6 mm deep
- ④ Drain
- ⑤ Drain Pipe

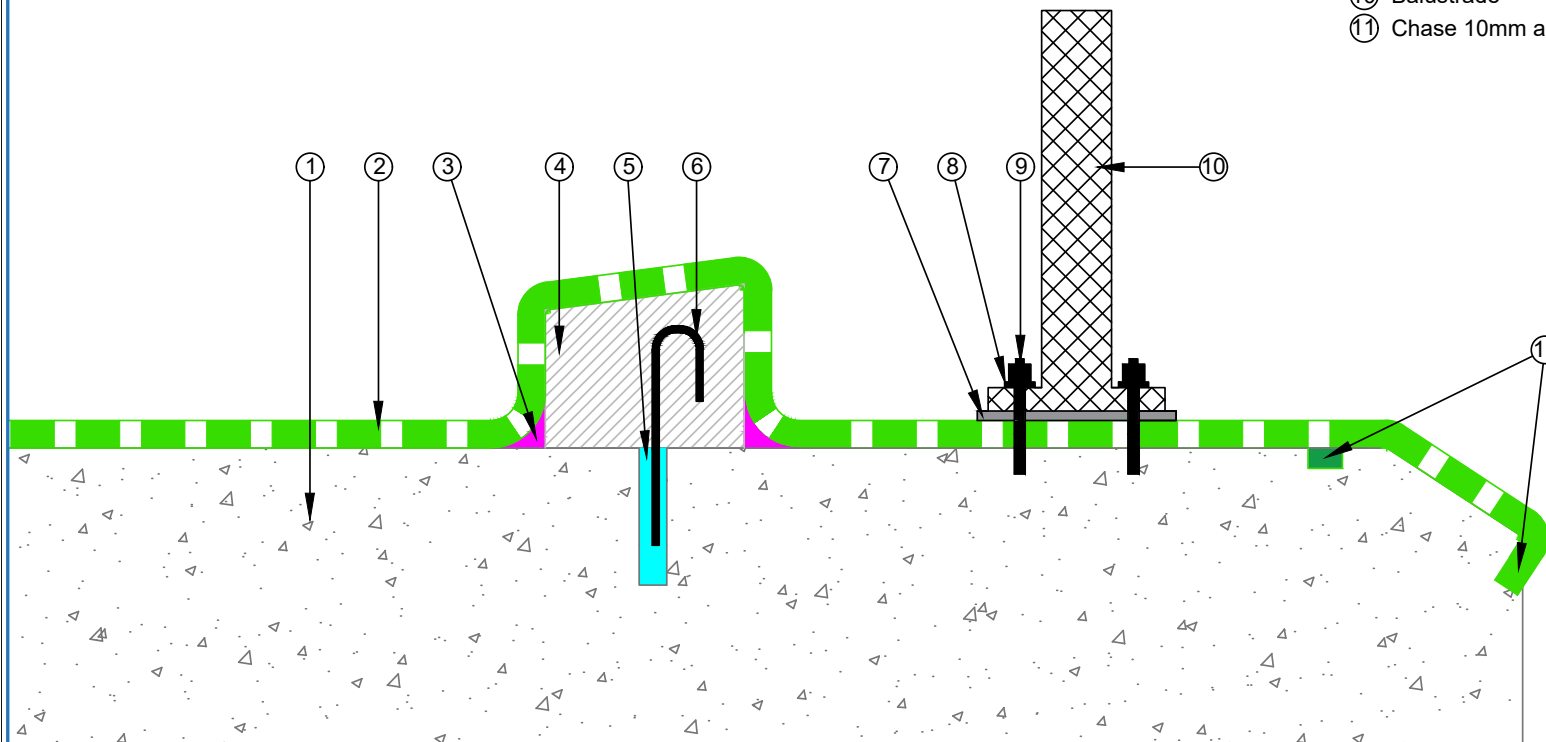



PRODUCT :	Matacryl Waterproofing System on Concrete Substrate		
TITLE :	Drain detail		
NUMBER :	EMC-D5	SCALE :	NTS
DRAWN BY :	NKT	DATE :	09-SEP-2024
<p>Equus standard details are especially drawn for use by Local Authorities, Building Contractors, Equus Applicators, Architects and design professionals. All details are drawn to assist in the development of project-specific details. Details may be modified where necessary to accommodate job-specific requirements but must be approved by Equus Industries Ltd. All components must be supplied by Equus Industries Ltd. Equus reserves the right to alter or upgrade details at any time without prior notice.</p>			



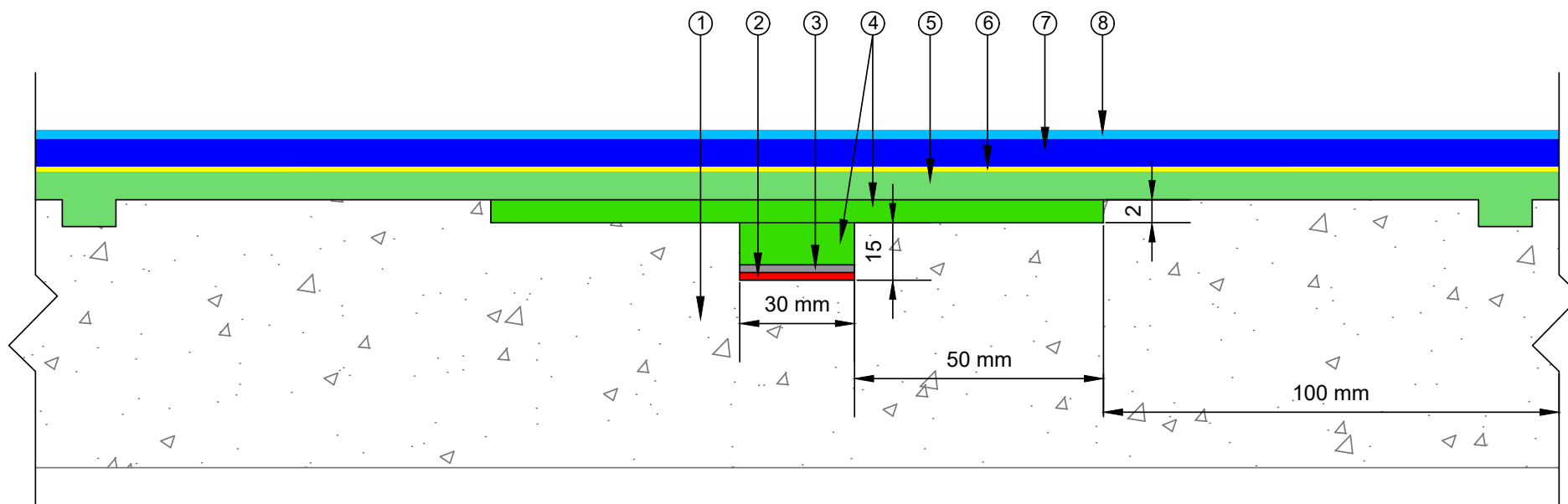
PRODUCT :	Matacryl Waterproofing System on Concrete Substrate		
TITLE :	Light Post Detail		
NUMBER :	EMC-D6	SCALE :	NTS
DRAWN BY :	NKT	DATE :	09-SEP-2024
Revised :			
Equus standard details are especially drawn for use by Local Authorities, Building Contractors, Equus Applicators, Architects and design professionals. All details are drawn to assist in the development of project-specific details. Details may be modified where necessary to accommodate job-specific requirements but must be approved by Equus Industries Ltd. All components must be supplied by Equus Industries Ltd. Equus reserves the right to alter or upgrade details at any time without prior notice.			

- ① Concrete Slab
- ② Matacryl System
- ③ Sealant Cove
- ④ Kerb
- ⑤ Sealant Cove
- ⑥ DH12
- ⑦ HD Rubber Pad, Membrane Plate
- ⑧ Washer
- ⑨ M20 Nut
- ⑩ Balustrade
- ⑪ Chase 10mm and filled with Matacryl Membrane

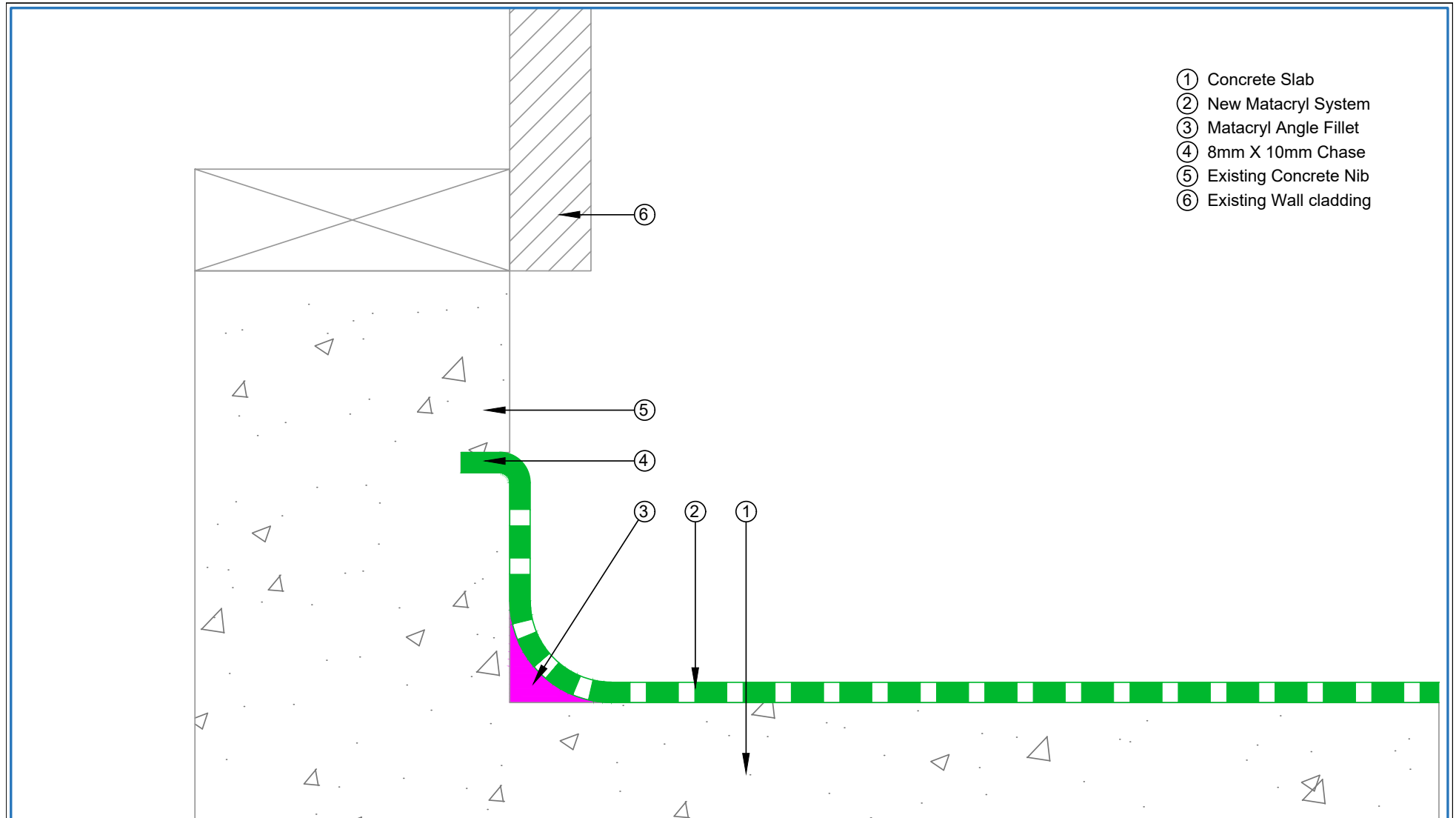


 E-mail : info@equus.nz Web : www.equus.nz	PRODUCT :	Matacryl Waterproofing System on Concrete Substrate		
	TITLE :	Top fix rail detail		
	NUMBER :	EMC-D7	SCALE :	NTS
	DRAWN BY :	NKT	DATE :	09-SEP-2024
	REVISED :			
Equus standard details are especially drawn for use by Local Authorities, Building Contractors, Equus Applicators, Architects and design professionals. All details are drawn to assist in the development of project-specific details. Details may be modified where necessary to accommodate job-specific requirements but must be approved by Equus Industries Ltd. All components must be supplied by Equus Industries Ltd. Equus reserves the right to alter or upgrade details at any time without prior notice.				


- ① Concrete Slab
- ② Duracon 108
- ③ Bond Breaker
- ④ Matacryl LM
- ⑤ Matacryl LM manual
- ⑥ Matacryl STC "Primer"
- ⑦ Duracon 215 + SNL
- ⑧ Matacryl STC



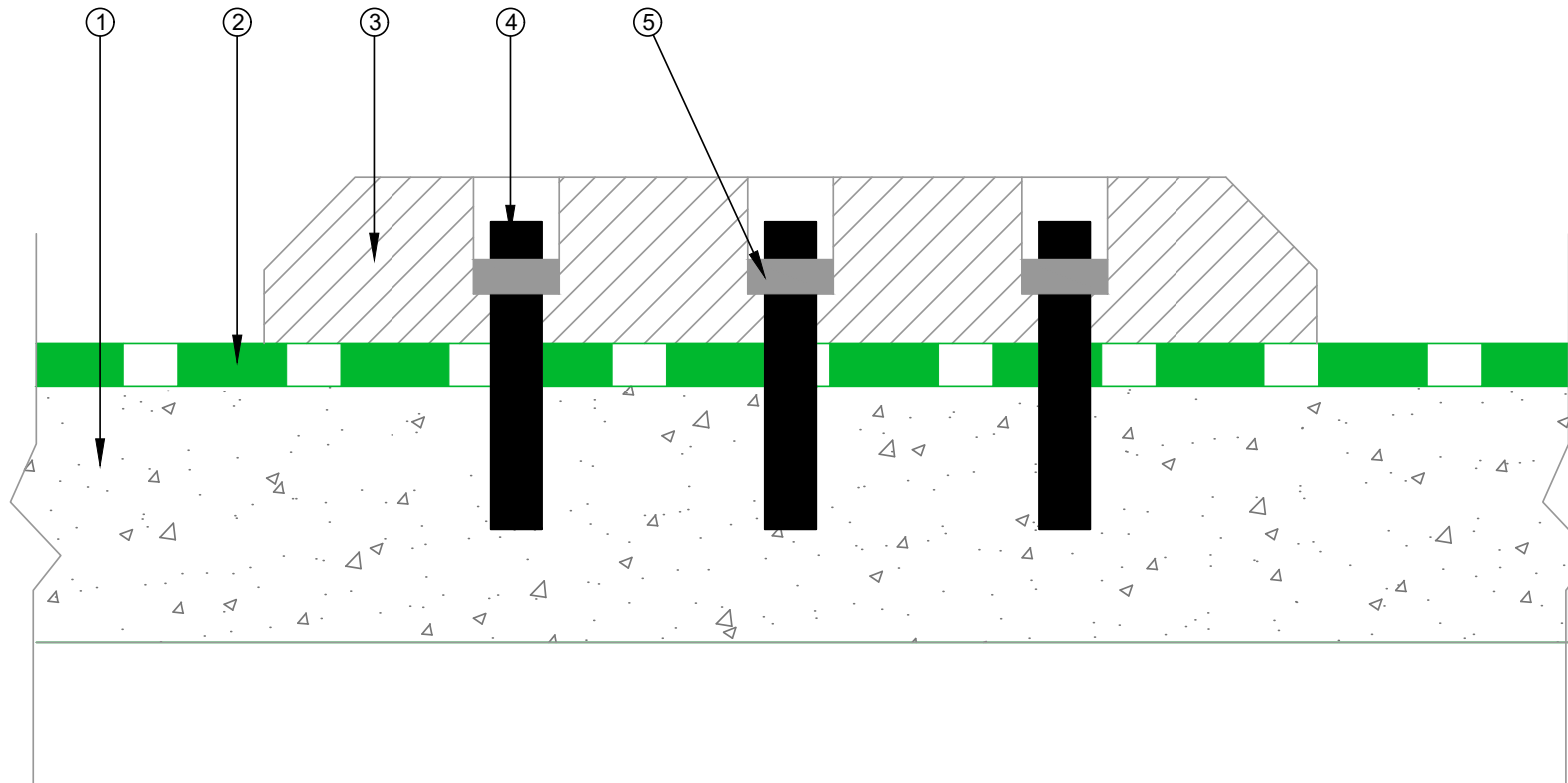
PRODUCT :	Matacryl Waterproofing System on Concrete Substrate		
TITLE :	Crack addressing detail		
NUMBER :	EMC-D8	SCALE :	NTS
DRAWN BY :	NKT	DATE :	09-SEP-2024
REVISD :			
<p>Equus standard details are especially drawn for use by Local Authorities, Building Contractors, Equus Applicators, Architects and design professionals. All details are drawn to assist in the development of project-specific details. Details may be modified where necessary to accommodate job-specific requirements but must be approved by Equus Industries Ltd. All components must be supplied by Equus Industries Ltd. Equus reserves the right to alter or upgrade details at any time without prior notice.</p>			



- ① Concrete Slab
- ② New Matacryl System
- ③ Matacryl Angle Fillet
- ④ 8mm X 10mm Chase
- ⑤ Existing Concrete Nib
- ⑥ Existing Wall cladding

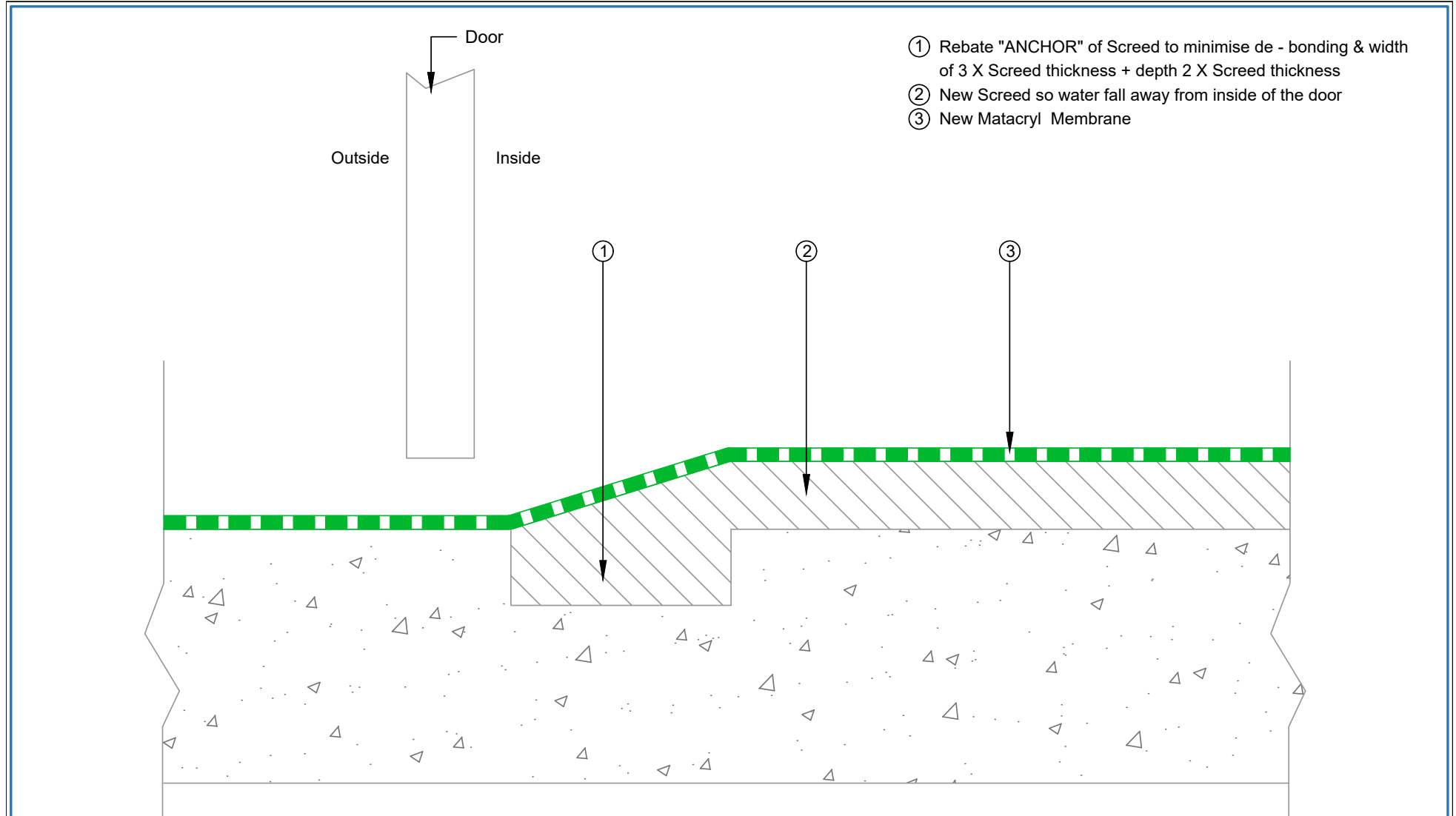
 E-mail : info@equus.nz Web : www.equus.nz	PRODUCT :	Matacryl Waterproofing System on Concrete Substrate		
	TITLE :	Stair/lift shaft detail		
	NUMBER :	EMC-D9	SCALE :	NTS
	DRAWN BY :	NKT	DATE :	13-SEP-2024
			REVISED :	
Equus standard details are especially drawn for use by Local Authorities, Building Contractors, Equus Applicators, Architects and design professionals. All details are drawn to assist in the development of project-specific details. Details may be modified where necessary to accommodate job-specific requirements but must be approved by Equus Industries Ltd. All components must be supplied by Equus Industries Ltd. Equus reserves the right to alter or upgrade details at any time without prior notice.				


- ① Existing Concrete Slab
- ② New Matacryl Membrane
- ③ New Wheelstop
- ④ M12 Threaded Rod and Epoxied in place
- ⑤ Washer and Nut holding Wheelstop in place

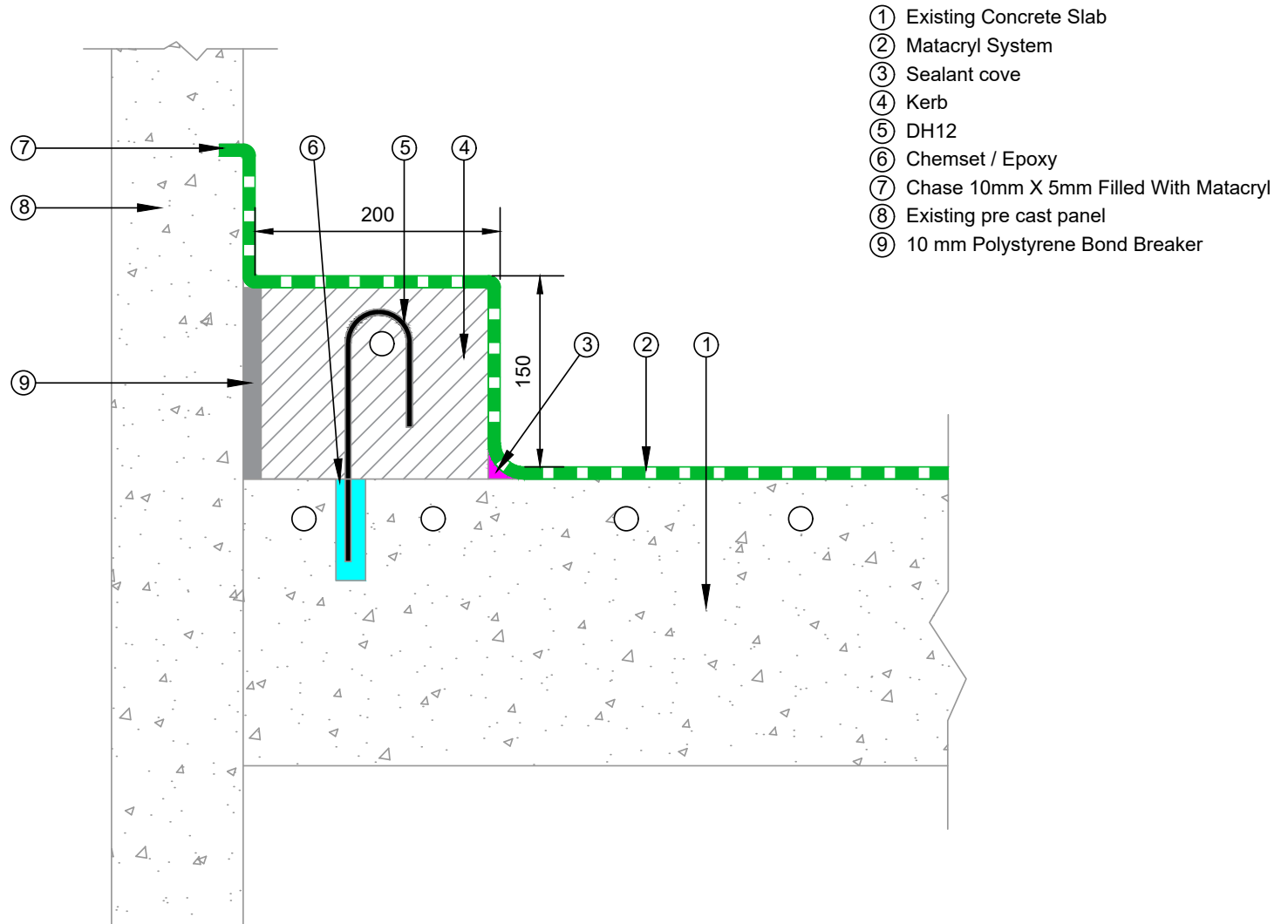


PRODUCT :	Matacryl Waterproofing System on Concrete Substrate		
TITLE :	Wheelstop fixing - Carpark System detail		
NUMBER :	EMC-D10	SCALE :	NTS
DRAWN BY :	NKT	DATE :	13-SEP-2024
REVISED :			

Equus standard details are especially drawn for use by Local Authorities, Building Contractors, Equus Applicators, Architects and design professionals. All details are drawn to assist in the development of project-specific details. Details may be modified where necessary to accommodate job-specific requirements but must be approved by Equus Industries Ltd. All components must be supplied by Equus Industries Ltd. Equus reserves the right to alter or upgrade details at any time without prior notice.



 E-mail : info@equus.nz Web : www.equus.nz	PRODUCT :	Matacryl Waterproofing System on Concrete Substrate		
	TITLE :	Door Threshold detail		
	NUMBER :	EMC-D11	SCALE :	NTS
	DRAWN BY :	NKT	DATE :	13-SEP-2024
	Revised :			
Equus standard details are especially drawn for use by Local Authorities, Building Contractors, Equus Applicators, Architects and design professionals. All details are drawn to assist in the development of project-specific details. Details may be modified where necessary to accommodate job-specific requirements but must be approved by Equus Industries Ltd. All components must be supplied by Equus Industries Ltd. Equus reserves the right to alter or upgrade details at any time without prior notice.				



PRODUCT :	Matacryn Waterproofing System on Concrete Substrate		
TITLE :	Kerb at PC panel - Carpark System Detail		
NUMBER :	EMC-D12	SCALE :	NTS
DRAWN BY :	NKT	DATE :	13-SEP-2024
Revised :			
Equus standard details are especially drawn for use by Local Authorities, Building Contractors, Equus Applicators, Architects and design professionals. All details are drawn to assist in the development of project-specific details. Details may be modified where necessary to accommodate job-specific requirements but must be approved by Equus Industries Ltd. All components must be supplied by Equus Industries Ltd. Equus reserves the right to alter or upgrade details at any time without prior notice.			