



EQUUS CHEVALINE EPISTIXX SL FLOORING SYSTEM

Standard Details



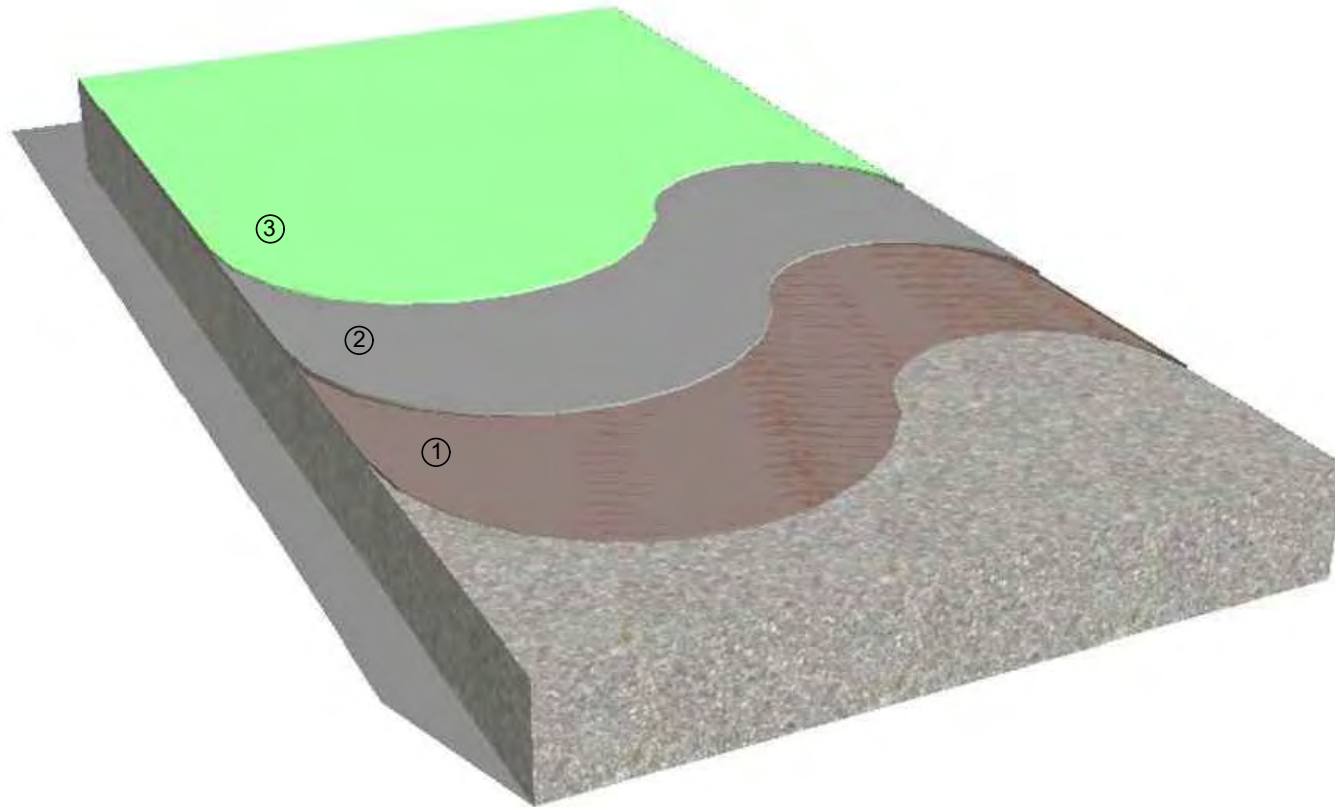
CELEBRATING
40 YEARS
1982-2022

MARCH 2024

CONTENTS

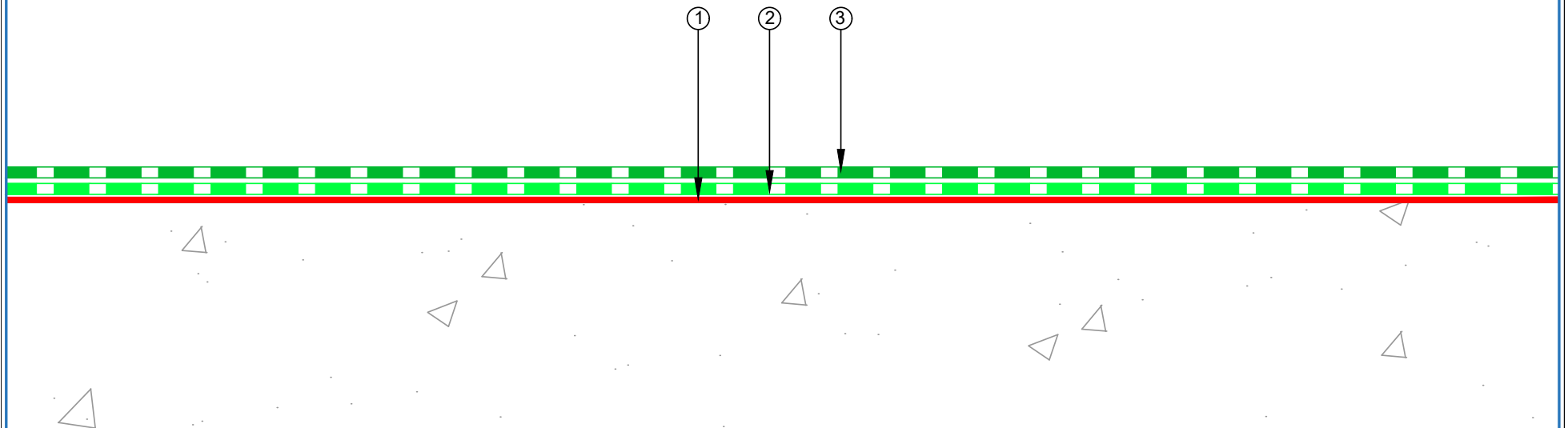
ECESL-D1a	Floor Coating Build Up (3D)	1
ECESL-D1	Floor Coating Build Up	2
ECESL-D2	Floor Drain	3
ECESL-D3	Standard Concrete Plinth	4
ECESL-D4	Nib Detail	5
ECESL-D5	Standard Channel Drain	6
ECESL-D6	Cool Store Panel Wall	7
ECESL-D7	Standard Fixing	8
ECESL-D8	Penetration Detail	9
ECESL-D14	Typical Details	10


- ① EQUUS Chevaline Epistixx primer
- ② EQUUS Chevaline Epistixx SL
- ③ EQUUS Chevaline Epistixx Rapid Topcoat NS or other approved Topcoat (optional)



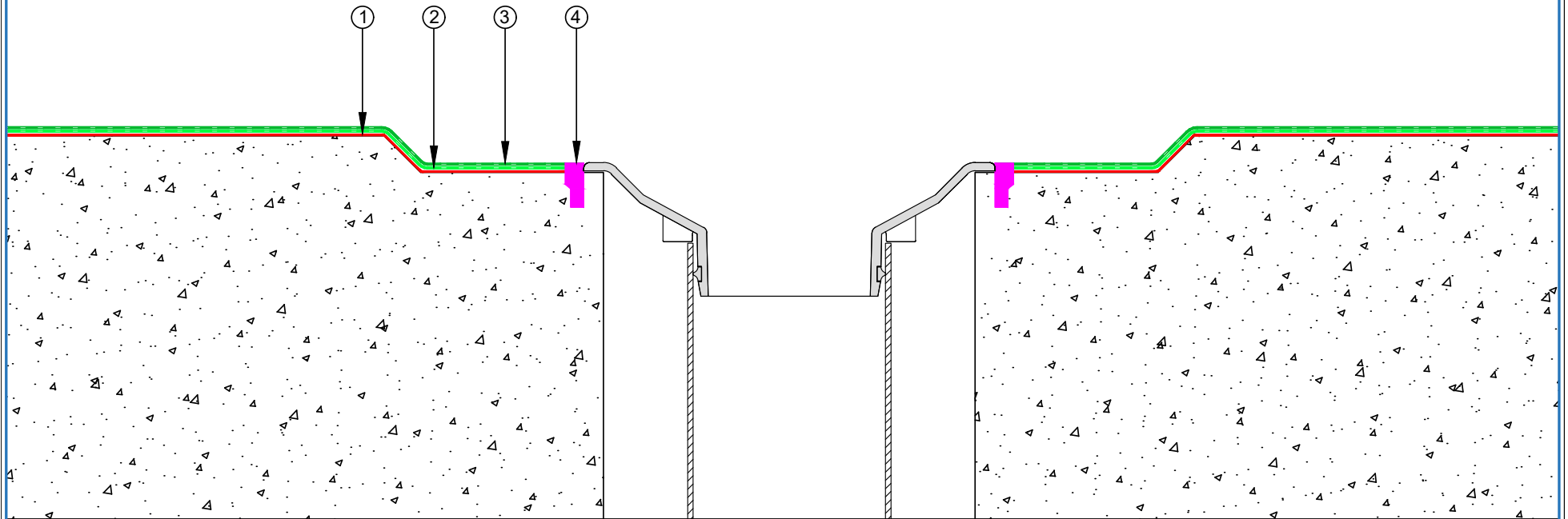
PRODUCT :	Chevaline Epistixx SL Flooring on Concrete Substrate Standard Detail		
TITLE :	Chevaline Epistixx SL floor coating build up detail		
NUMBER :	ECESL-D1a	SCALE :	NTS
DRAWN BY :	NKT	DATE :	12-Mar-2024
Revised :			
Equus standard details are especially drawn for use by Local Authorities, Building Contractors, Equus Applicators, Architects and design professionals. All details are drawn to assist in the development of project-specific details. Details may be modified where necessary to accommodate job-specific requirements but must be approved by Equus Industries Ltd. All components must be supplied by Equus Industries Ltd. Equus reserves the right to alter or upgrade details at any time without prior notice.			


- ① EQUUS Chevaline Epistixx primer
- ② EQUUS Chevaline Epistixx SL
- ③ EQUUS Chevaline Epistixx Rapid Topcoat NS or other approved Topcoat (optional)



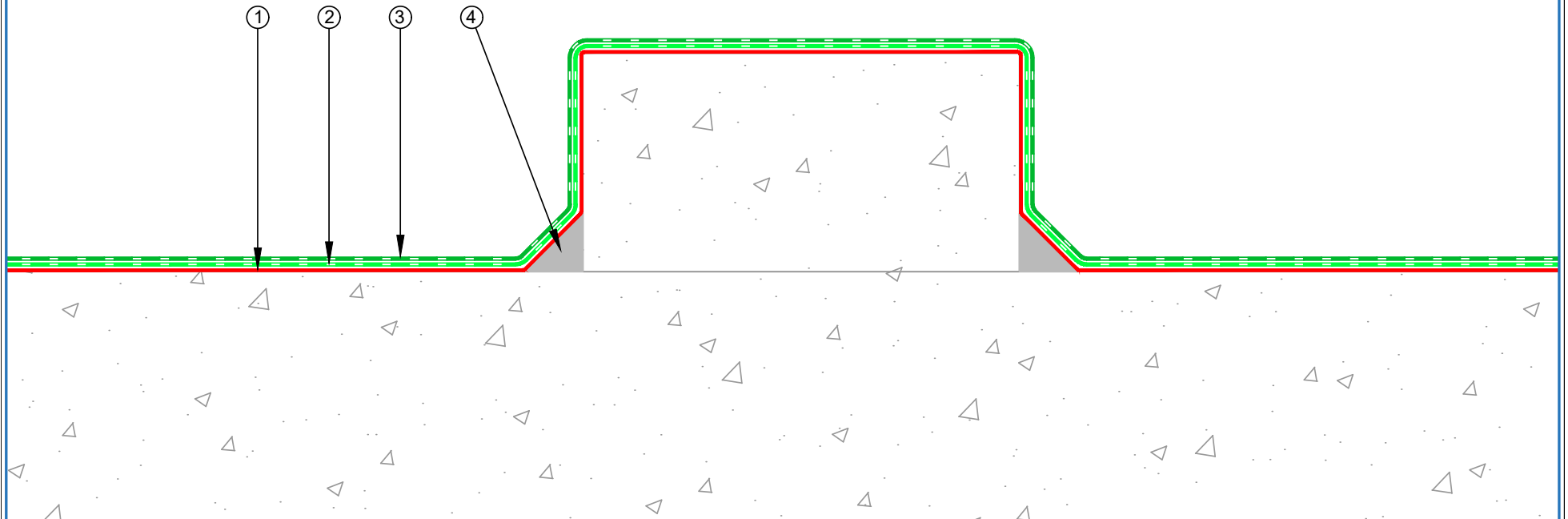
 E-mail : info@equus.nz Web : www.equus.nz	PRODUCT :	Chevaline Epistixx SL Flooring on Concrete Substrate Standard Detail		
	TITLE :	Chevaline Epistixx SL floor coating build up detail		
	NUMBER :	ECESL-D1	SCALE :	NTS
	DRAWN BY :	NKT	DATE :	12-Mar-2024
REVISIED :				
Equus standard details are especially drawn for use by Local Authorities, Building Contractors, Equus Applicators, Architects and design professionals. All details are drawn to assist in the development of project-specific details. Details may be modified where necessary to accommodate job-specific requirements but must be approved by Equus Industries Ltd. All components must be supplied by Equus Industries Ltd. Equus reserves the right to alter or upgrade details at any time without prior notice.				


- ① EQUUS Chevaline Epistixx primer
- ② EQUUS Chevaline Epistixx SL
- ③ EQUUS Chevaline Epistixx Rapid Topcoat NS or other approved Topcoat (optional)
- ④ EQUUS Dymonic 100 sealant

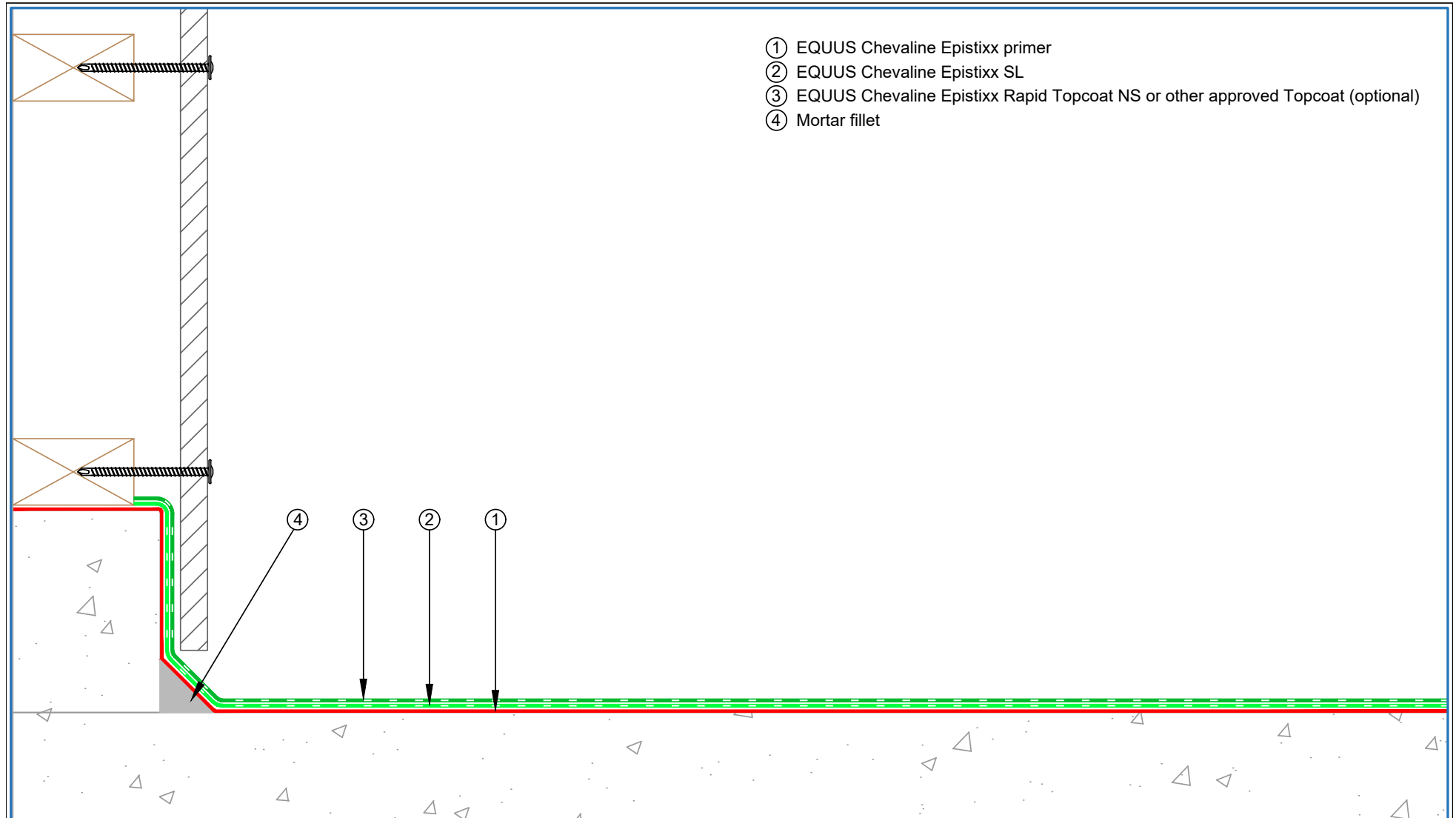


 E-mail : info@equus.nz Web : www.equus.nz	PRODUCT :	Chevaline Epistixx SL Flooring on Concrete Substrate Standard Detail		
	TITLE :	Floor drain detail		
	NUMBER :	ECSL-D2	SCALE :	NTS
	DRAWN BY :	NKT	DATE :	12-Mar-2024
			REVISED :	
Equus standard details are especially drawn for use by Local Authorities, Building Contractors, Equus Applicators, Architects and design professionals. All details are drawn to assist in the development of project-specific details. Details may be modified where necessary to accommodate job-specific requirements but must be approved by Equus Industries Ltd. All components must be supplied by Equus Industries Ltd. Equus reserves the right to alter or upgrade details at any time without prior notice.				


- ① EQUUS Chevaline Epistixx primer
- ② EQUUS Chevaline Epistixx Rapid SL
- ③ EQUUS Chevaline Epistixx Rapid Topcoat NS or other approved Topcoat (optional)
- ④ Mortar fillet



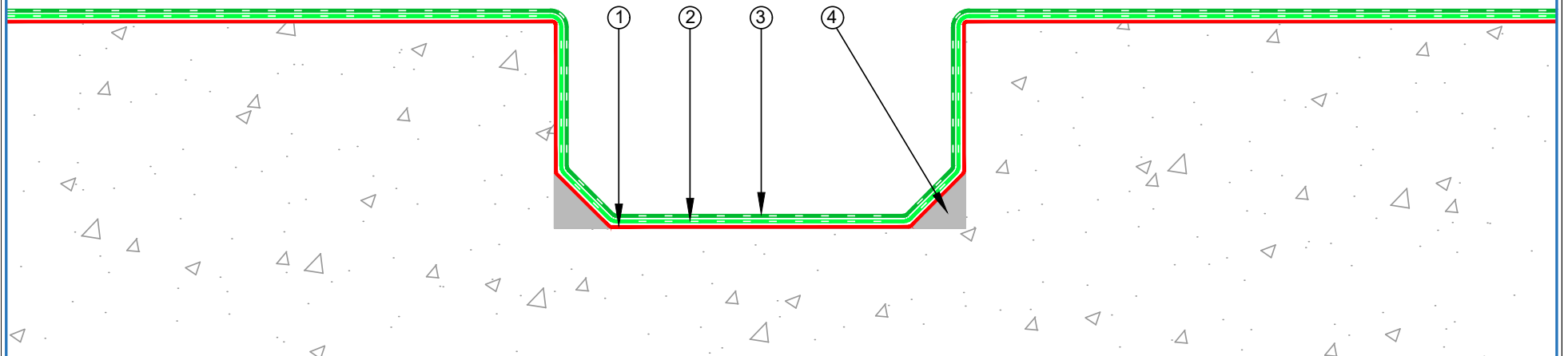
 E-mail : info@equus.nz Web : www.equus.nz	PRODUCT :	Chevaline Epistixx SL Flooring on Concrete Substrate Standard Detail		
	TITLE :	Standard concrete plinth detail		
	NUMBER :	ECSL-D3	SCALE :	NTS
	DRAWN BY :	NKT	DATE :	12-Mar-2024
			REVISED :	
Equus standard details are especially drawn for use by Local Authorities, Building Contractors, Equus Applicators, Architects and design professionals. All details are drawn to assist in the development of project-specific details. Details may be modified where necessary to accommodate job-specific requirements but must be approved by Equus Industries Ltd. All components must be supplied by Equus Industries Ltd. Equus reserves the right to alter or upgrade details at any time without prior notice.				




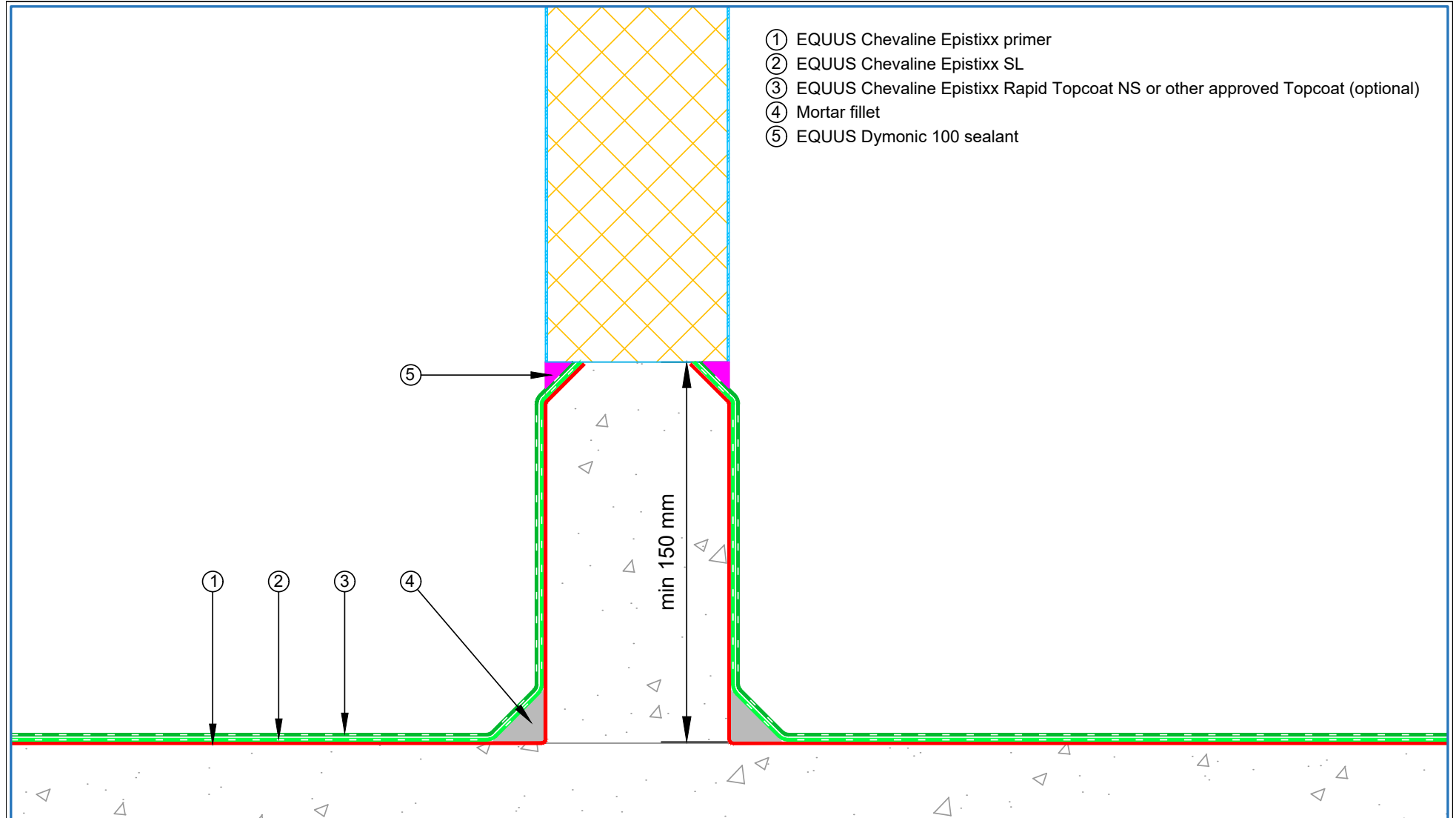
- ① EQUUS Chevaline Epistixx primer
- ② EQUUS Chevaline Epistixx SL
- ③ EQUUS Chevaline Epistixx Rapid Topcoat NS or other approved Topcoat (optional)
- ④ Mortar fillet

 E-mail : info@equus.nz Web : www.equus.nz	PRODUCT :	Chevaline Epistixx SL Flooring on Concrete Substrate Standard Detail		
	TITLE :	Nib detail		
	NUMBER :	ECESL-D4	SCALE :	NTS
	DRAWN BY :	NKT	DATE :	12-Mar-2024
REVISIONS : EQUUS INDUSTRIES LTD.				
Equus standard details are especially drawn for use by Local Authorities, Building Contractors, Equus Applicators, Architects and design professionals. All details are drawn to assist in the development of project-specific details. Details may be modified where necessary to accommodate job-specific requirements but must be approved by Equus Industries Ltd. All components must be supplied by Equus Industries Ltd. Equus reserves the right to alter or upgrade details at any time without prior notice.				


- ① EQUUS Chevaline Epistixx primer
- ② EQUUS Chevaline Epistixx SL
- ③ EQUUS Chevaline Epistixx Rapid Topcoat NS or other approved Topcoat (optional)
- ④ Mortar fillet



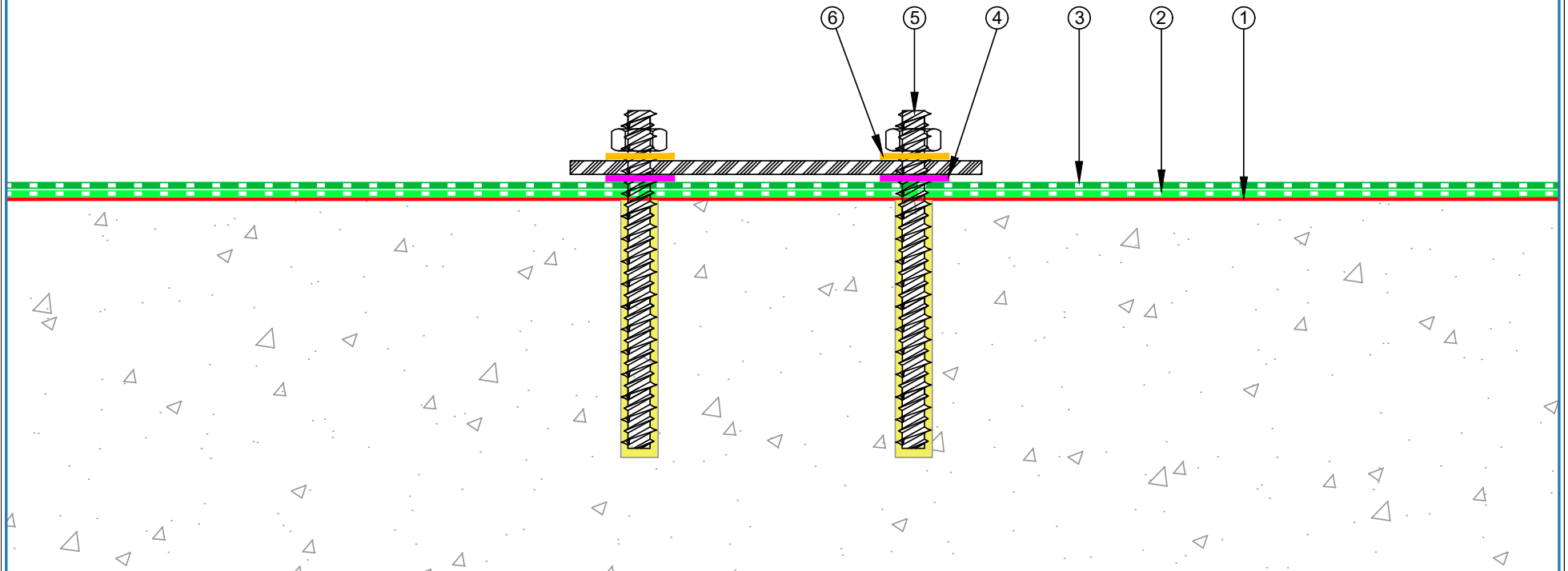
 E-mail : info@equus.nz Web : www.equus.nz	PRODUCT :	Chevaline Epistixx SL Flooring on Concrete Substrate Standard Detail		
	TITLE :	Standard channel drain detail		
	NUMBER :	ECSL-D5	SCALE :	NTS
	DRAWN BY :	NKT	DATE :	12-Mar-2024
			REVISED :	
Equus standard details are especially drawn for use by Local Authorities, Building Contractors, Equus Applicators, Architects and design professionals. All details are drawn to assist in the development of project-specific details. Details may be modified where necessary to accommodate job-specific requirements but must be approved by Equus Industries Ltd. All components must be supplied by Equus Industries Ltd. Equus reserves the right to alter or upgrade details at any time without prior notice.				




- ① EQUUS Chevaline Epistixx primer
- ② EQUUS Chevaline Epistixx SL
- ③ EQUUS Chevaline Epistixx Rapid Topcoat NS or other approved Topcoat (optional)
- ④ Mortar fillet
- ⑤ EQUUS Dymonic 100 sealant

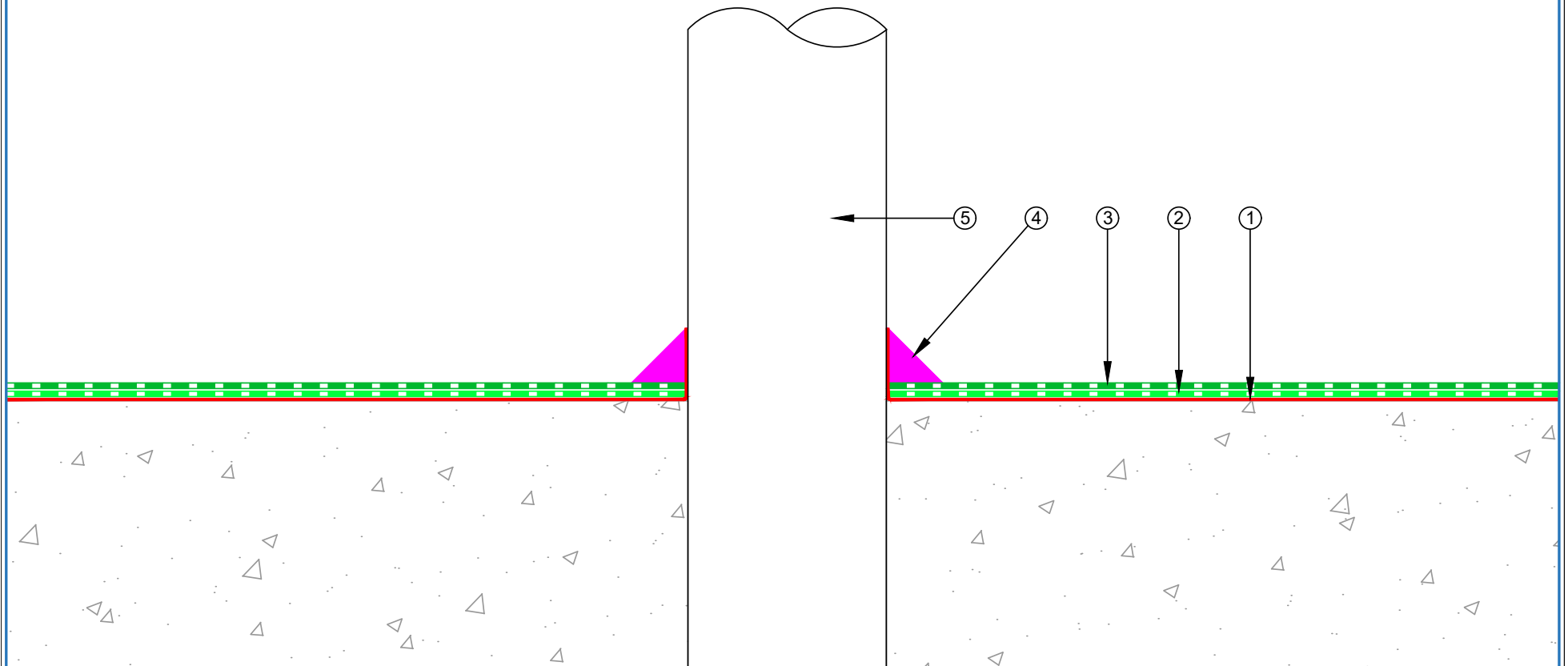
 E-mail : info@equus.nz Web : www.equus.nz	PRODUCT :	Chevaline Epistixx SL Flooring on Concrete Substrate Standard Detail		
	TITLE :	Cool store panel wall detail		
	NUMBER :	ECESL-D6	SCALE :	NTS
	DRAWN BY :	NKT	DATE :	12-Mar-2024
	REVISED :			
Equus standard details are especially drawn for use by Local Authorities, Building Contractors, Equus Applicators, Architects and design professionals. All details are drawn to assist in the development of project-specific details. Details may be modified where necessary to accommodate job-specific requirements but must be approved by Equus Industries Ltd. All components must be supplied by Equus Industries Ltd. Equus reserves the right to alter or upgrade details at any time without prior notice.				


- ① EQUUS Chevaline Epistixx primer
- ② EQUUS Chevaline Epistixx SL
- ③ EQUUS Chevaline Epistixx Rapid Topcoat NS or other approved Topcoat (optional)
- ④ EQUUS Dymonic 100 sealant
- ⑤ Chemset Anchors
- ⑥ Neoprene washers



 E-mail : info@equus.nz Web : www.equus.nz	PRODUCT :	Chevaline Epistixx SL Flooring on Concrete Substrate Standard Detail		
	TITLE :	Standard fixing detail		
	NUMBER :	ECSL-D7	SCALE :	NTS
	DRAWN BY :	NKT	DATE :	12-Mar-2024
	REVISED :			
Equus standard details are especially drawn for use by Local Authorities, Building Contractors, Equus Applicators, Architects and design professionals. All details are drawn to assist in the development of project-specific details. Details may be modified where necessary to accommodate job-specific requirements but must be approved by Equus Industries Ltd. All components must be supplied by Equus Industries Ltd. Equus reserves the right to alter or upgrade details at any time without prior notice.				

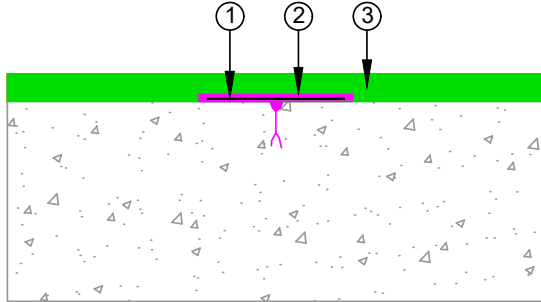
- ① EQUUS Chevaline Epistixx primer
- ② EQUUS Chevaline Epistixx SL
- ③ EQUUS Chevaline Epistixx Rapid Topcoat NS or other approved Topcoat (optional)
- ④ EQUUS Dymonic 100 sealant
- ⑤ Penetration



 E-mail : info@equus.nz Web : www.equus.nz	PRODUCT :	Chevaline Epistixx SL Flooring on Concrete Substrate Standard Detail		
	TITLE :	Standard penetration detail		
	NUMBER :	ECSL-D8	SCALE :	1:2
	DRAWN BY :	NKT	DATE :	12-Mar-2024
	REVISED :			
Equus standard details are especially drawn for use by Local Authorities, Building Contractors, Equus Applicators, Architects and design professionals. All details are drawn to assist in the development of project-specific details. Details may be modified where necessary to accommodate job-specific requirements but must be approved by Equus Industries Ltd. All components must be supplied by Equus Industries Ltd. Equus reserves the right to alter or upgrade details at any time without prior notice.				

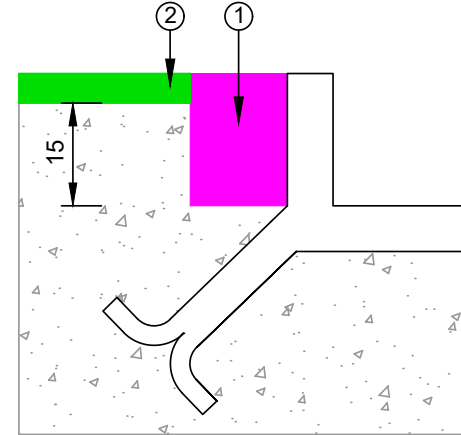
CRACK IN THE SUBSTRATE

- ① Fabric
- ② EQUUS Dymonic 100 sealant
- ③ EQUUS Chevaline Epistixx SL



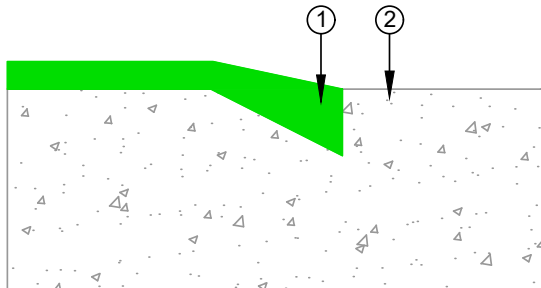
CONNECTIONS TO DRAINAGE SYSTEM & SUMPS

- ① Cut connection. Fill with EQUUS Dymonic 100 sealant
- ② EQUUS Chevaline Epistixx SL



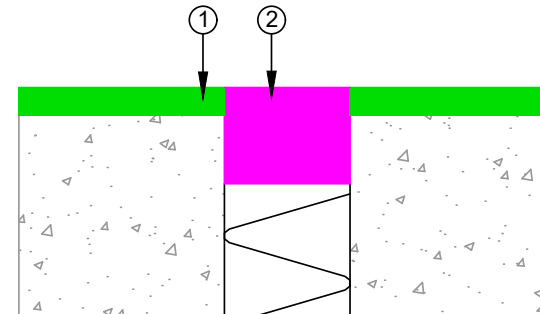
CONNECTION TO VERTICAL SURFACE
FREE CONNECTION AT THE DURACON FLOORING END

- ① EQUUS Chevaline Epistixx SL
- ② Connecting area



Expansion Joints

- ① EQUUS Chevaline Epistixx SL
- ② EQUUS Dymonic 100 sealant



PRODUCT :	Chevaline Epistixx SL Flooring on Concrete Substrate Standard Detail		
TITLE :	Typical Detail		
NUMBER :	ECESL-D14	SCALE :	NTS
DRAWN BY :	NKT	DATE :	12-Mar-2024
DRAWN BY :		REVISD :	
<p>Equus standard details are especially drawn for use by Local Authorities, Building Contractors, Equus Applicators, Architects and design professionals. All details are drawn to assist in the development of project-specific details. Details may be modified where necessary to accommodate job-specific requirements but must be approved by Equus Industries Ltd. All components must be supplied by Equus Industries Ltd. Equus reserves the right to alter or upgrade details at any time without prior notice.</p>			