



# EQUUS SOPREMA EASY FLASHING

Standard Details over Existing Bituminous Membranes



CELEBRATING  
**40** YEARS  
1982-2022

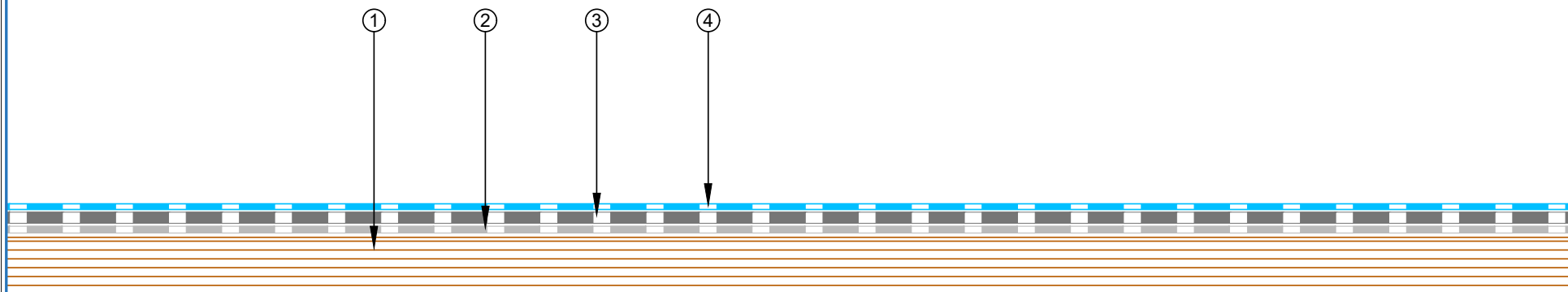




MAY 2023

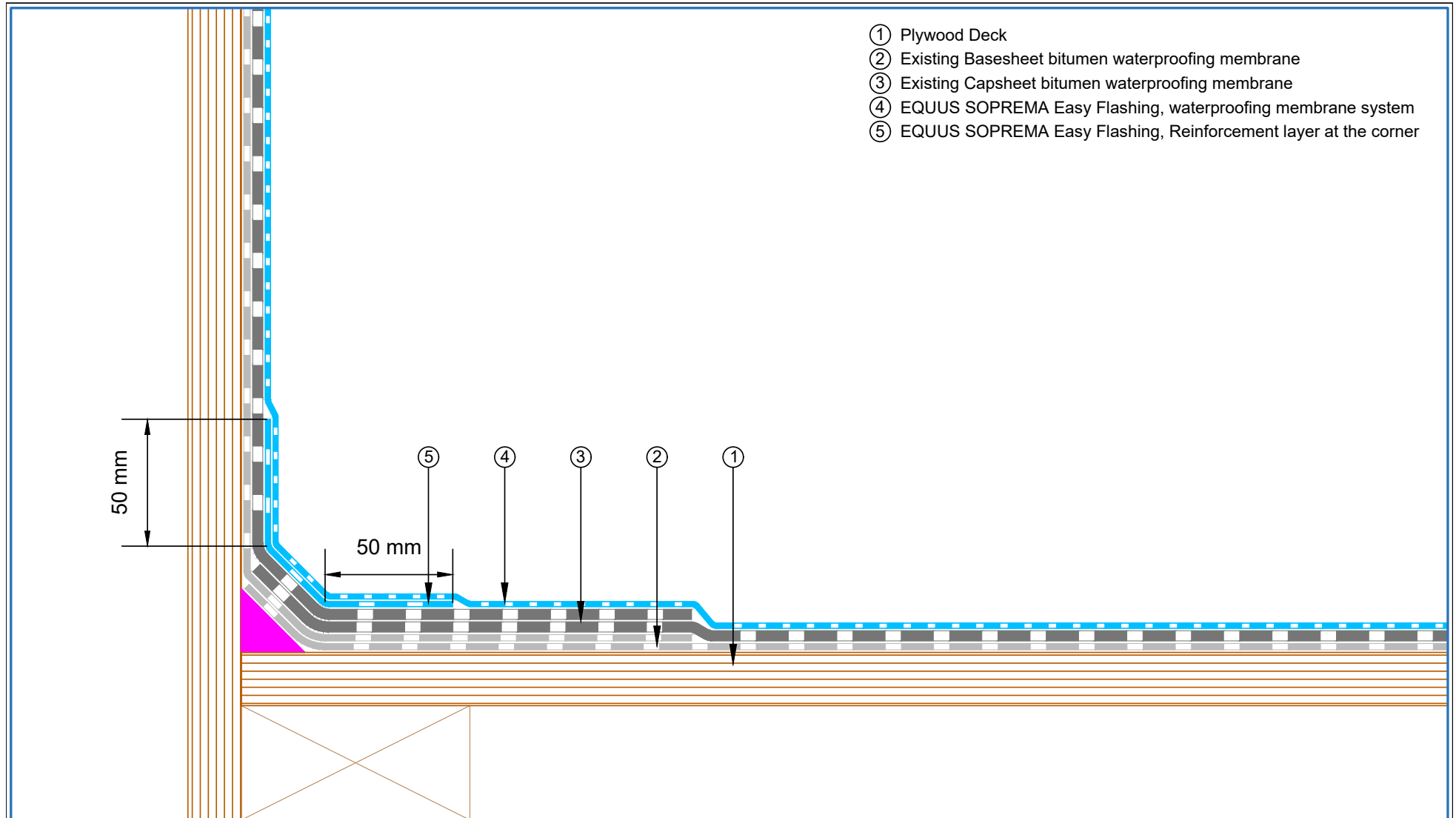
## CONTENTS

SFCRP-D0a	Roof Built Up	1
SFCRP-D1a	Corner Upstand	2
SFCRP-D2a	Pipe Penetration	3
SFCRP-D3a	Roof Outlet	4
SFCRP-D4a	Internal Gutter Parapet	5
SFCRP-D5a	Internal Gutter	6
SFCRP-D6a	Spouting Gutter – Metal Drip Edge	7
SFCRP-D7a	Parapet with Cap Flashing	8
SFCRP-D8a	Window Sill Transition	9

- ① Plywood Deck
- ② Existing Basesheet bitumen waterproofing membrane
- ③ Existing Capsheet bitumen waterproofing membrane
- ④ EQUUS SOPREMA Easy Flashing, waterproofing membrane system

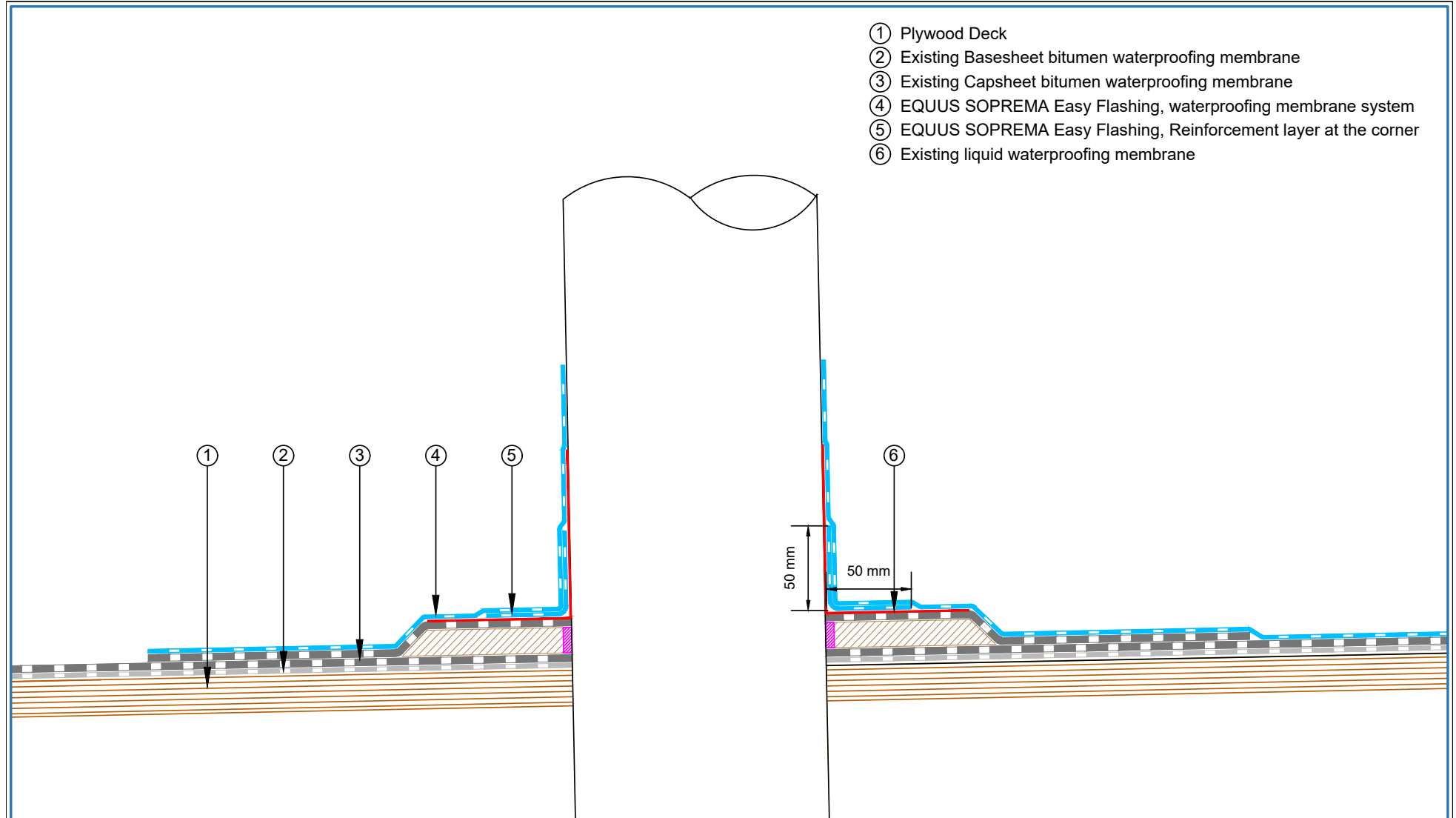


 E-mail : <a href="mailto:admin@equus.co.nz">admin@equus.co.nz</a> Web : <a href="http://www.equus.co.nz">www.equus.co.nz</a>	PROJECT :	Cold Roof on Plywood Standard Detail - Easy Flashing		
	TITLE :	Roof Built Up Detail		
	NUMBER :	SFCRP-D0a	SCALE :	1:2
	DRAWN BY :	NKT	DATE :	05-May-2023
EQUUS WATERPROOF MEMBRANE DETAILS ARE SPECIALLY DRAWN FOR USE BY LOCAL AUTHORITIES, BUILDING CONTRACTORS, EQUUS APPLICATORS, ARCHITECTS AND DESIGN PROFESSIONALS. ALL DETAILS ARE DRAWN TO ASSIST IN THE DEVELOPMENT OF PROJECT SPECIFIC DETAILS. DETAILS MAY BE MODIFIED WHERE NECESSARY TO ACCOMMODATE JOB SPECIFIC REQUIREMENTS BUT MUST BE APPROVED BY EQUUS INDUSTRIES LTD. ALL COMPONENTS MUST BE SUPPLIED BY EQUUS INDUSTRIES LTD. EQUUS RESERVES THE RIGHT TO ALTER OR UPGRADE DETAILS AT ANY TIME WITHOUT PRIOR NOTICE.				
				



- ① Plywood Deck
- ② Existing Basesheet bitumen waterproofing membrane
- ③ Existing Capsheet bitumen waterproofing membrane
- ④ EQUUS SOPREMA Easy Flashing, waterproofing membrane system
- ⑤ EQUUS SOPREMA Easy Flashing, Reinforcement layer at the corner

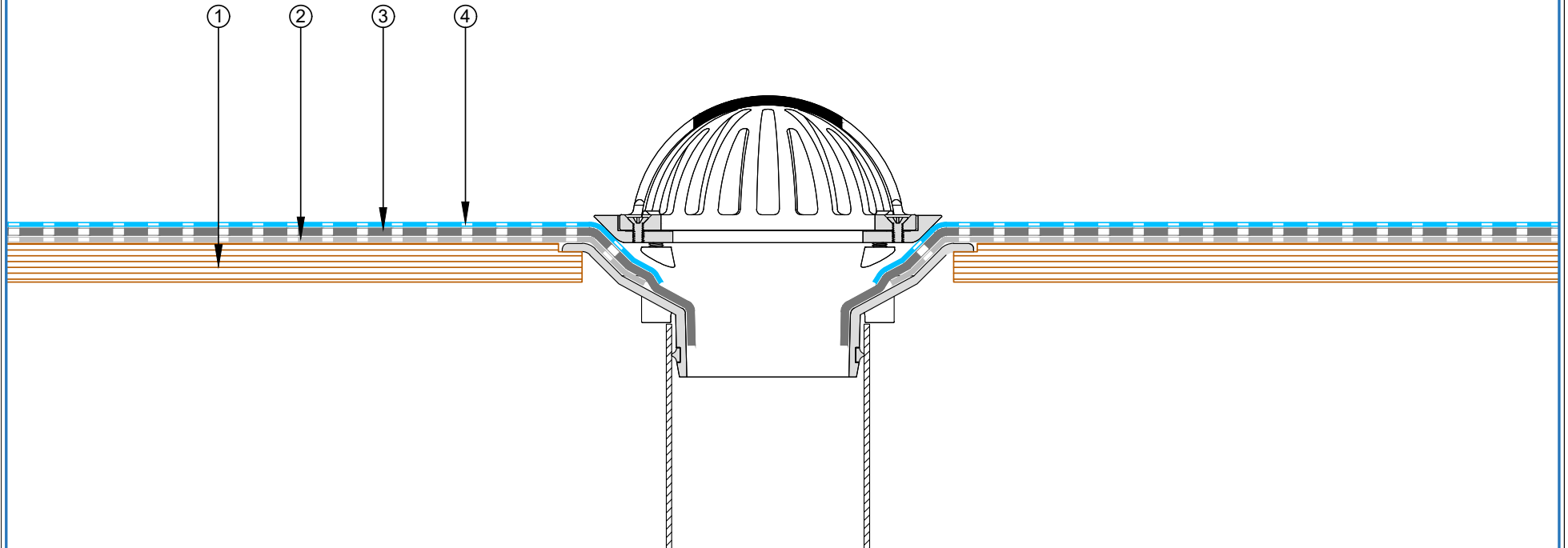
 E-mail : <a href="mailto:admin@equus.co.nz">admin@equus.co.nz</a> Web : <a href="http://www.equus.co.nz">www.equus.co.nz</a>	PROJECT :		Cold Roof on Plywood Standard Detail - Easy Flashing	
	TITLE :		corner upstand detail	
	NUMBER :	SFCRP-D1a	SCALE :	1:2
	DRAWN BY :	NKT	DATE :	05-May-2023
			REVISED :	
<p><small>Equus Waterproof Membrane Details are specially drawn for use by Local Authorities, Building Contractors, Equus Applicators, Architects and design professionals. All details are drawn to assist in the development of project specific details. Details may be modified where necessary to accommodate job specific requirements but must be approved by Equus Industries Ltd. All components must be supplied by Equus Industries Ltd. Equus reserves the right to alter or upgrade details at any time without prior notice.</small></p>				



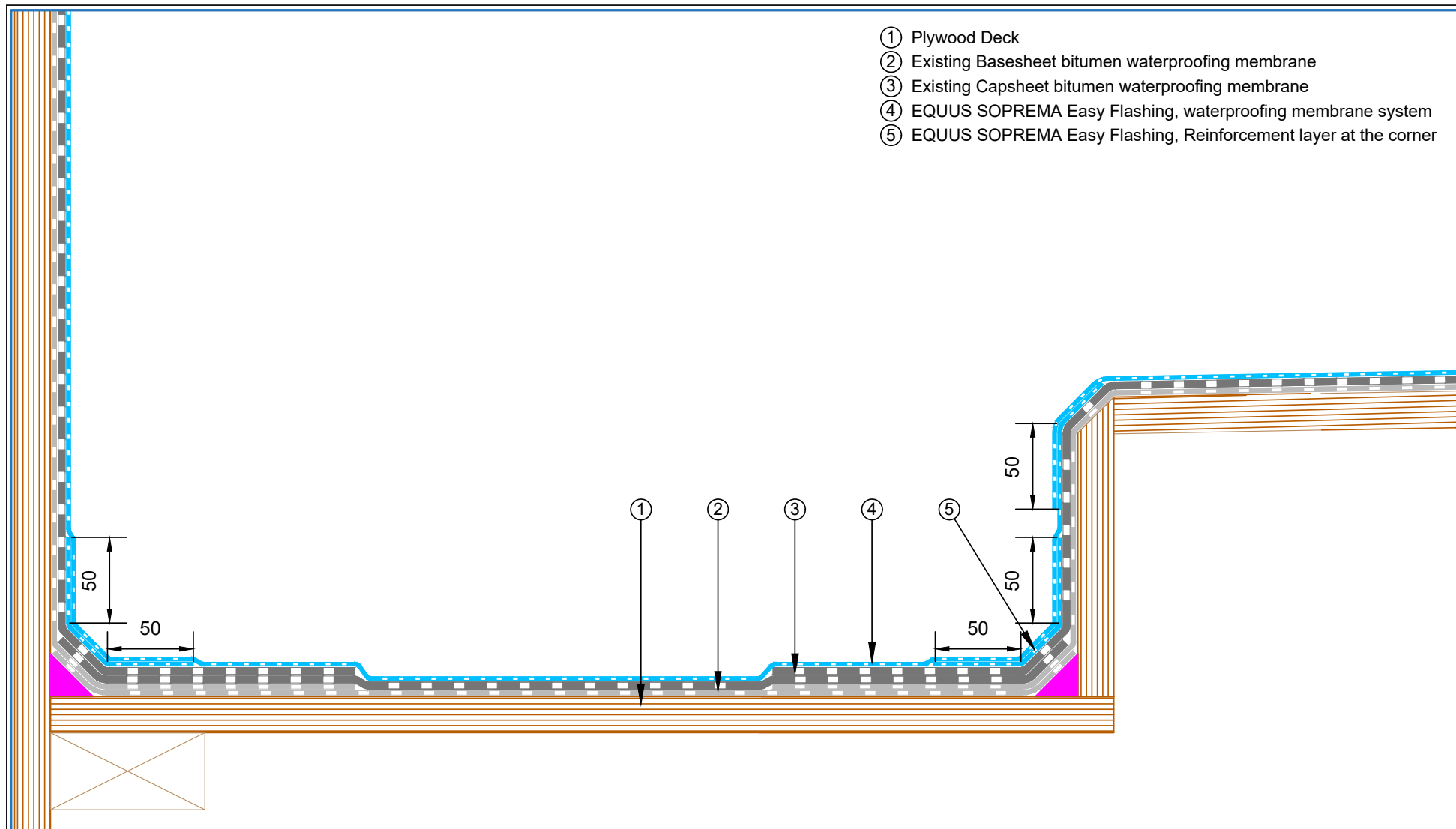
- ① Plywood Deck
- ② Existing Basesheet bitumen waterproofing membrane
- ③ Existing Capsheet bitumen waterproofing membrane
- ④ EQUUS SOPREMA Easy Flashing, waterproofing membrane system
- ⑤ EQUUS SOPREMA Easy Flashing, Reinforcement layer at the corner
- ⑥ Existing liquid waterproofing membrane

 E-mail : <a href="mailto:admin@equus.co.nz">admin@equus.co.nz</a> Web : <a href="http://www.equus.co.nz">www.equus.co.nz</a>	PROJECT :		Cold Roof on Plywood Standard Detail - Easy Flashing			
	TITLE :		Pipe penetration detail			
	NUMBER :		SFCRP-D2a	SCALE :	NTS	
	DRAWN BY :		NKT	DATE :	05-May-2023	REVISED :
	<p>Equus Waterproof Membrane Details are specially drawn for use by Local Authorities, Building Contractors, Equus Applicators, Architects and design professionals. All details are drawn to assist in the development of project specific details. Details may be modified where necessary to accommodate job specific requirements but must be approved by Equus Industries Ltd. All components must be supplied by Equus Industries Ltd. Equus reserves the right to alter or upgrade details at any time without prior notice.</p>					

- ① Plywood Deck
- ② Existing Basesheet bitumen waterproofing membrane
- ③ Existing Capsheet bitumen waterproofing membrane
- ④ EQUUS SOPREMA Easy Flashing, waterproofing membrane system



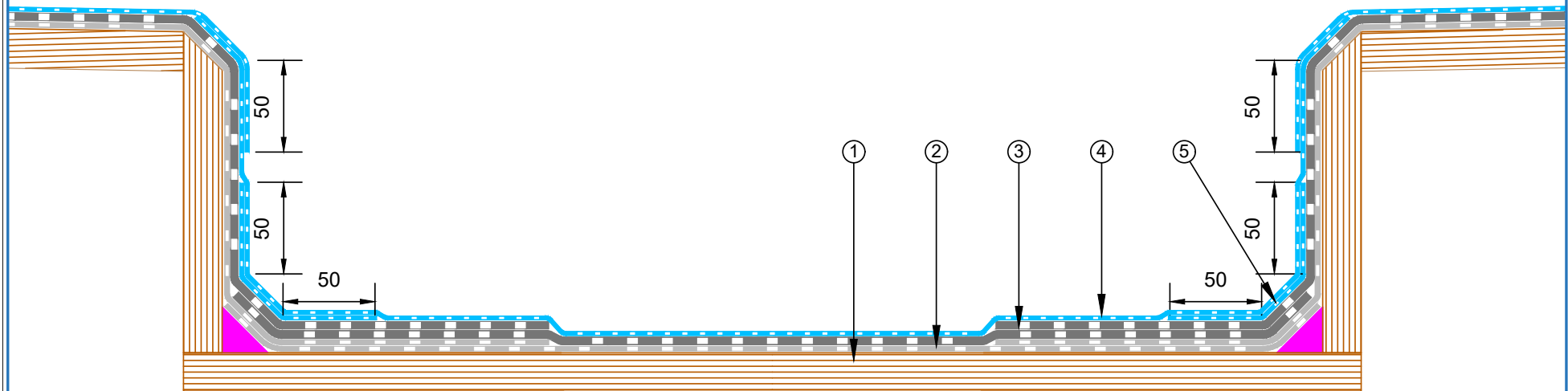
<p>E-mail : <a href="mailto:admin@equus.co.nz">admin@equus.co.nz</a> Web : <a href="http://www.equus.co.nz">www.equus.co.nz</a></p>	PROJECT :	Cold Roof on Plywood Standard Detail - Easy Flashing		
	TITLE :	Roof outlet detail		
	NUMBER :	SFCRP-D3a	SCALE :	NTS
	DRAWN BY :	NKT	DATE :	05-May-2023
			REVISED :	
<p>Equus Waterproof Membrane Details are specially drawn for use by Local Authorities, Building Contractors, Equus Applicators, Architects and design professionals. All details are drawn to assist in the development of project specific details. Details may be modified where necessary to accommodate job specific requirements but must be approved by Equus Industries Ltd. All components must be supplied by Equus Industries Ltd. Equus reserves the right to alter or upgrade details at any time without prior notice.</p>				
		<p>AUTHORISED DISTRIBUTOR <b>SOPREMA</b></p>		



- ① Plywood Deck
- ② Existing Basesheet bitumen waterproofing membrane
- ③ Existing Capsheet bitumen waterproofing membrane
- ④ EQUUS SOPREMA Easy Flashing, waterproofing membrane system
- ⑤ EQUUS SOPREMA Easy Flashing, Reinforcement layer at the corner

<p>E-mail : <a href="mailto:admin@equus.co.nz">admin@equus.co.nz</a> Web : <a href="http://www.equus.co.nz">www.equus.co.nz</a></p>	PROJECT :	Cold Roof on Plywood Standard Detail - Easy Flashing		
	TITLE :	Internal gutter parapet detail		
	NUMBER :	SFCRP-D4a	SCALE :	1:3 @A4
	DRAWN BY :	NKT	DATE :	08-May-2023
			REVISED :	
<p>Equus Waterproof Membrane Details are specially drawn for use by Local Authorities, Building Contractors, Equus Applicators, Architects and design professionals. All details are drawn to assist in the development of project specific details. Details may be modified where necessary to accommodate job specific requirements but must be approved by Equus Industries Ltd. All components must be supplied by Equus Industries Ltd. Equus reserves the right to alter or upgrade details at any time without prior notice.</p>				
		<p>AUTHORISED DISTRIBUTOR <b>SOPREMA</b></p>		

- ① Plywood Deck
- ② Existing Basesheet bitumen waterproofing membrane
- ③ Existing Capsheet bitumen waterproofing membrane
- ④ EQUUS SOPREMA Easy Flashing, waterproofing membrane system
- ⑤ EQUUS SOPREMA Easy Flashing, Reinforcement layer at the corner



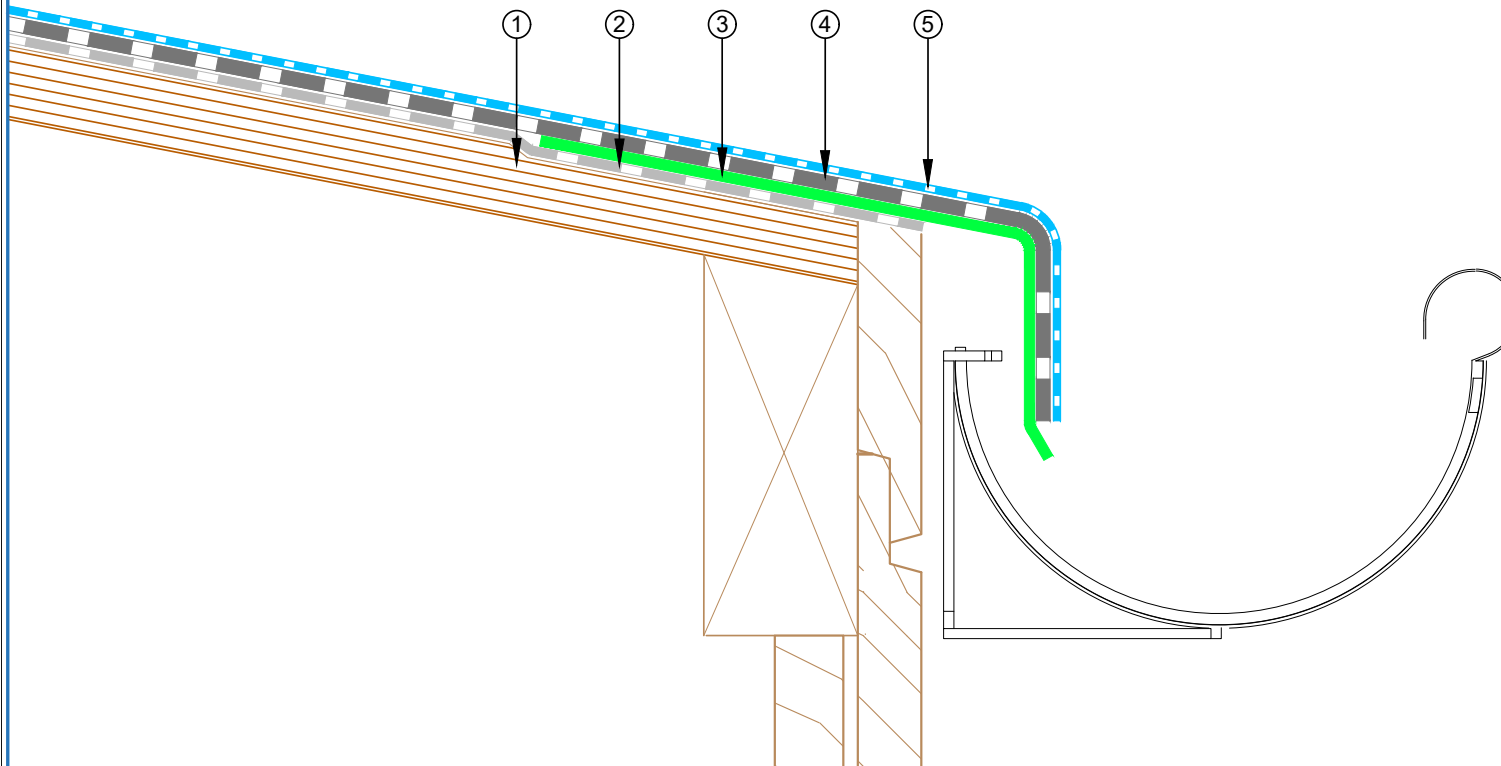
E-mail : [admin@equus.co.nz](mailto:admin@equus.co.nz)  
Web : [www.equus.co.nz](http://www.equus.co.nz)



PROJECT :	Cold Roof on Plywood Standard Detail - Easy Flashing			
TITLE :	Internal gutter detail			
NUMBER :	SFCRP-D5a	SCALE :	1:3 @A4	
DRAWN BY :	NKT	DATE :	08-May-2023	REVISED :
<p>Equus Waterproof Membrane Details are specially drawn for use by Local Authorities, Building Contractors, Equus Applicators, Architects and design professionals. All details are drawn to assist in the development of project specific details. Details may be modified where necessary to accommodate job specific requirements but must be approved by Equus Industries Ltd. All components must be supplied by Equus Industries Ltd. Equus reserves the right to alter or upgrade details at any time without prior notice.</p>				

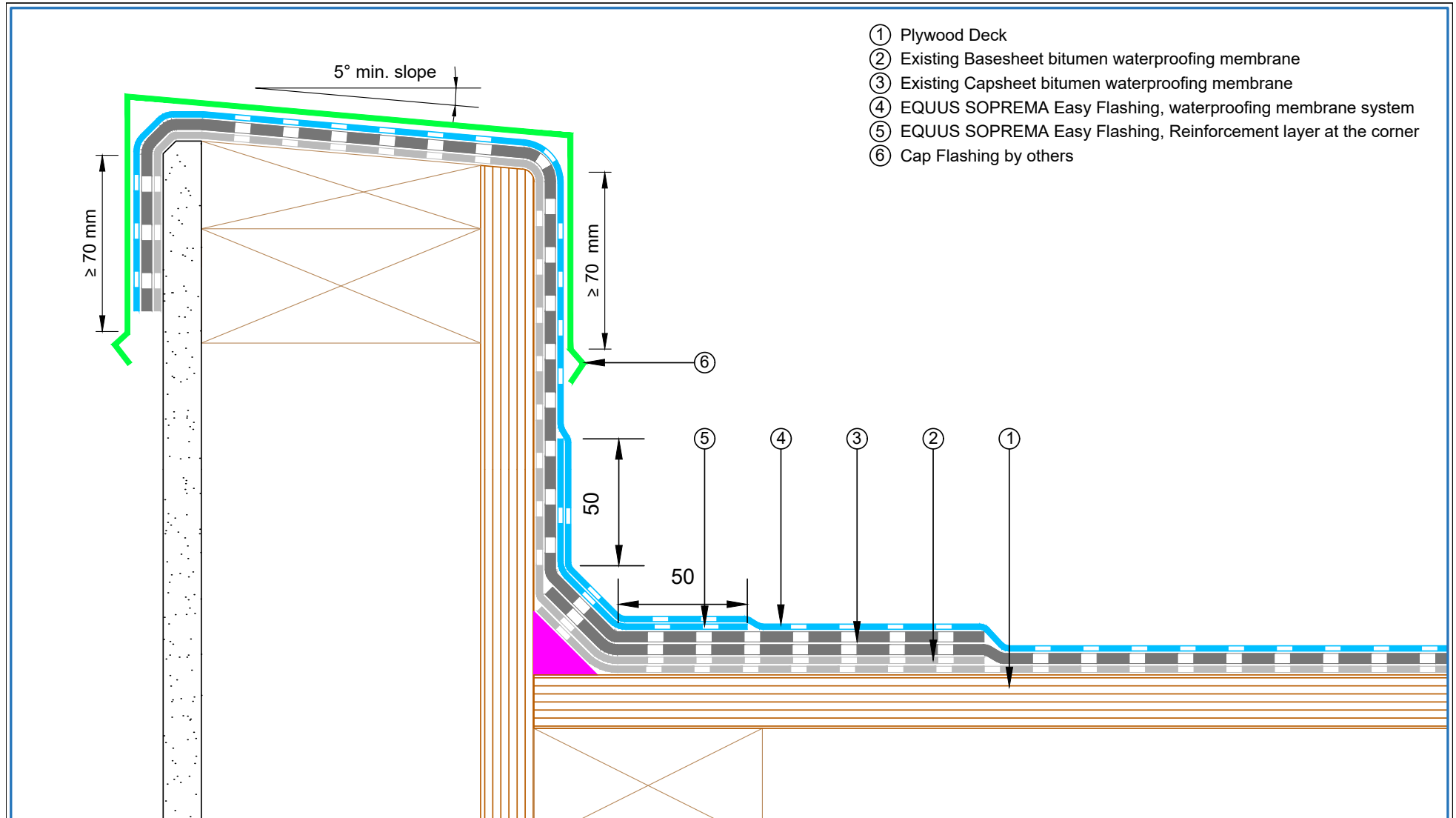
AUTHORISED DISTRIBUTOR  
**SOPREMA**



- ① Plywood Deck
- ② Existing Basesheet bitumen waterproofing membrane
- ③ Existing Metal drip edge
- ④ Existing Capsheet bitumen waterproofing membrane
- ⑤ EQUUS SOPREMA Easy Flashing, waterproofing membrane system



 E-mail : <a href="mailto:admin@equus.co.nz">admin@equus.co.nz</a> Web : <a href="http://www.equus.co.nz">www.equus.co.nz</a>	PROJECT :		Cold Roof on Plywood Standard Detail - Easy Flashing		 AUTHORISED DISTRIBUTOR <b>SOPREMA</b>	
	TITLE :		Spouting gutter - Metal drip edge detail			
	NUMBER :		SFCRP-D6a	SCALE :		1:2 @A4
	DRAWN BY :	NKT	DATE :	08-May-2023		REVISED :
	Equus Waterproof Membrane Details are specially drawn for use by Local Authorities, Building Contractors, Equus Applicators, Architects and design professionals. All details are drawn to assist in the development of project specific details. Details may be modified where necessary to accommodate job specific requirements but must be approved by Equus Industries Ltd. All components must be supplied by Equus Industries Ltd. Equus reserves the right to alter or upgrade details at any time without prior notice.					

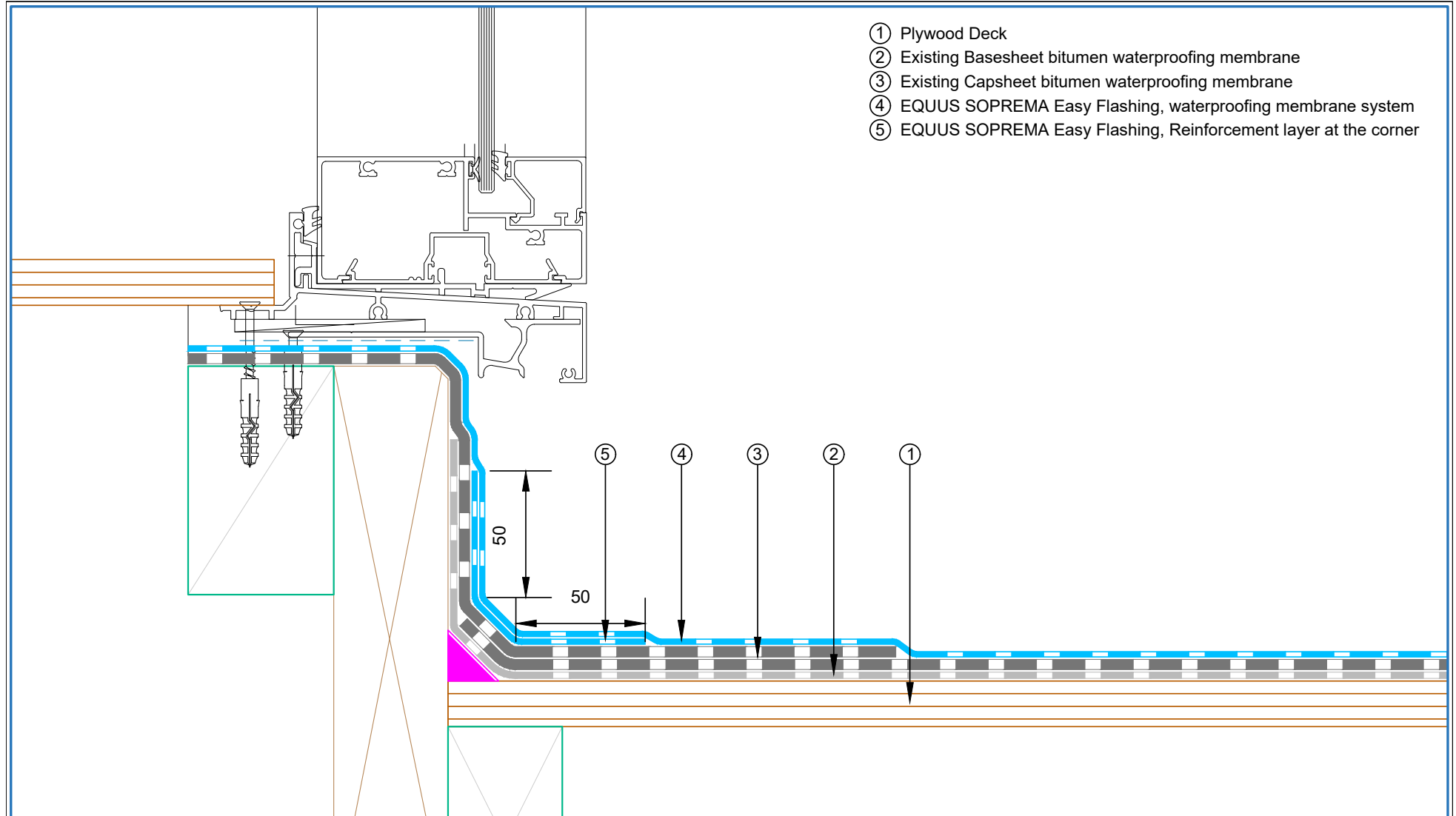


- ① Plywood Deck
- ② Existing Basesheet bitumen waterproofing membrane
- ③ Existing Capsheet bitumen waterproofing membrane
- ④ EQUUS SOPREMA Easy Flashing, waterproofing membrane system
- ⑤ EQUUS SOPREMA Easy Flashing, Reinforcement layer at the corner
- ⑥ Cap Flashing by others

E-mail : [admin@equus.co.nz](mailto:admin@equus.co.nz)  
Web : [www.equus.co.nz](http://www.equus.co.nz)

PROJECT :	Cold Roof on Plywood Standard Detail - Easy Flashing		
TITLE :	Parapet with cap flashing detail		
NUMBER :	SFCRP-D7a	SCALE :	1:2 @A4
DRAWN BY :	NKT	DATE :	08-May-2023
		REVISED :	
<p>Equus Waterproof Membrane Details are specially drawn for use by Local Authorities, Building Contractors, Equus Applicators, Architects and design professionals. All details are drawn to assist in the development of project specific details. Details may be modified where necessary to accommodate job specific requirements but must be approved by Equus Industries Ltd. All components must be supplied by Equus Industries Ltd. Equus reserves the right to alter or upgrade details at any time without prior notice.</p>			

AUTHORISED DISTRIBUTOR  
**SOPREMA**



E-mail : [admin@equus.co.nz](mailto:admin@equus.co.nz)  
Web : [www.equus.co.nz](http://www.equus.co.nz)

PROJECT :	Cold Roof on Plywood Standard Detail - Easy Flashing		
TITLE :	Window sill transition detail		
NUMBER :	SFCRP-D8a	SCALE :	1:2 @A4
DRAWN BY :	NKT	DATE :	08-May-2023
REVIS		REVISED :	
<p>Equus Waterproof Membrane Details are specially drawn for use by Local Authorities, Building Contractors, Equus Applicators, Architects and design professionals. All details are drawn to assist in the development of project specific details. Details may be modified where necessary to accommodate job specific requirements but must be approved by Equus Industries Ltd. All components must be supplied by Equus Industries Ltd. Equus reserves the right to alter or upgrade details at any time without prior notice.</p>			

AUTHORISED DISTRIBUTOR  
**SOPREMA**