



EQUUS DURACON FLOORING SYSTEM

Standard Details

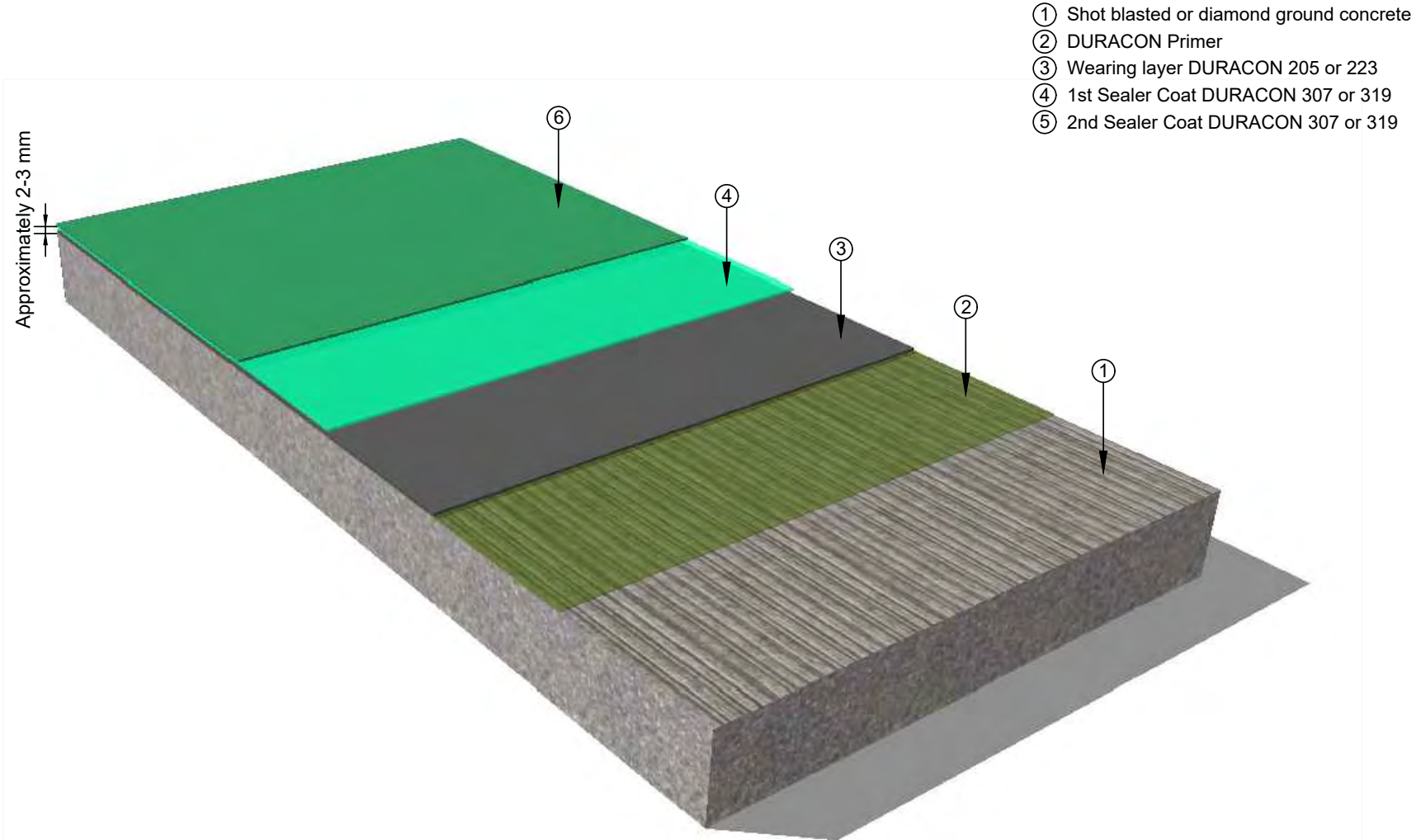


CELEBRATING
40 YEARS
1982-2022

OCTOBER 2023

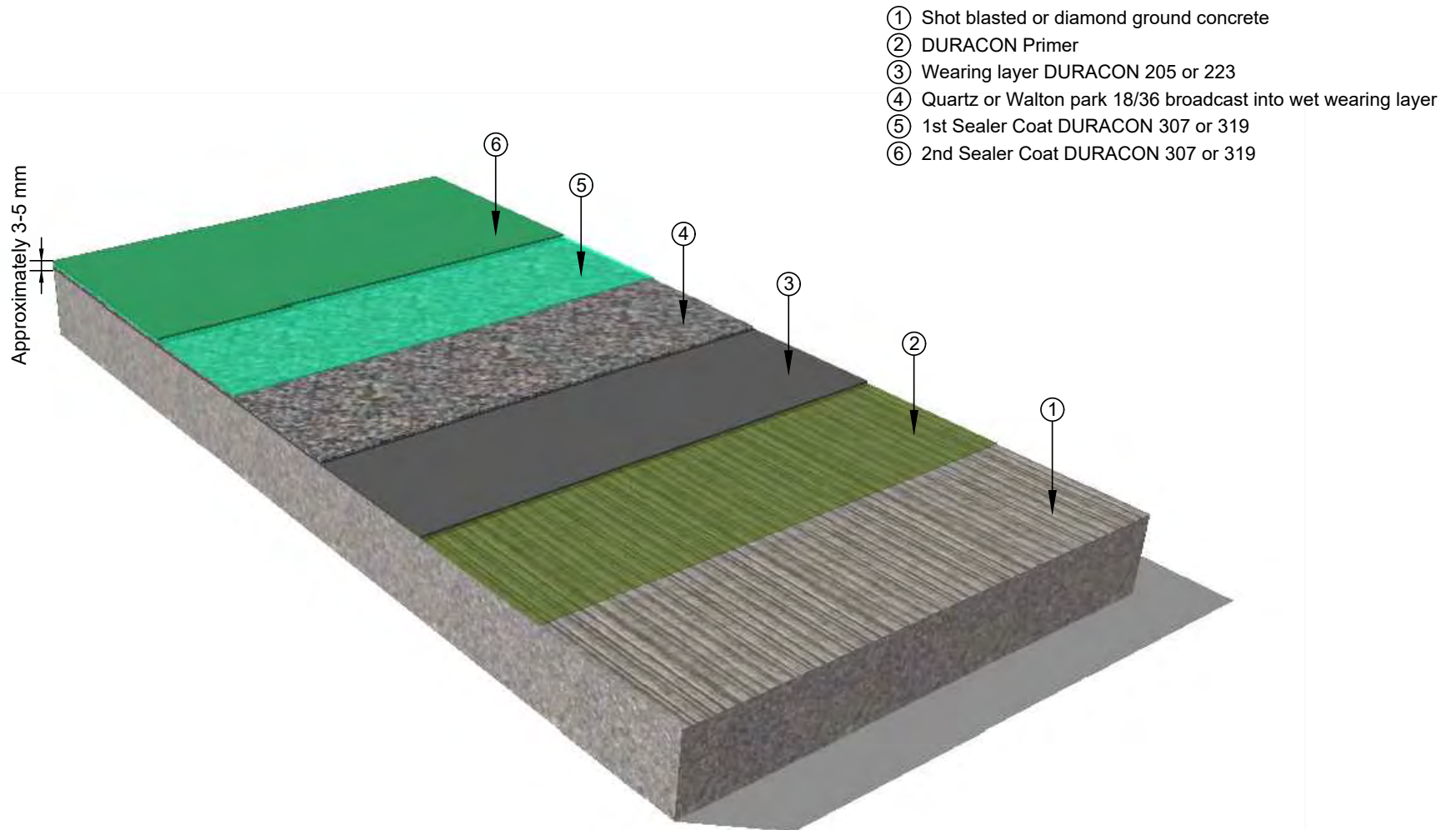
CONTENTS

EDF-D1a	Floor Coating Build Up Duracon SL	1
EDF-D1	Floor Coating Build Up Duracon BC	2
EDF-D2	Floor Drain	3
EDF-D3	Concrete Plinth	4
EDF-D4	Nib Detail	5
EDF-D5	Channel Drain	6
EDF-D6	Cool Store Panel Wall	7
EDF-D7	Standard fixing	8
EDF-D7b	Typical Plinth	9
EDF-D8	Penetration Detail	10
EDF-D9a	Coves and Connections to Vertical Surfaces	11
EDF-D9b	Flexible Coves and Connections to Vertical Surfaces	12
EDF-D10	Coves and Connection to Hygienic Wall	13
EDF-D11a	Perimeter Drain – Method 1	14
EDF-D11b	Perimeter Drain – Method 2	15
EDF-D13	Door Threshold	16
EDF-D14	Typical Detail	17



- ① Shot blasted or diamond ground concrete
- ② DURACON Primer
- ③ Wearing layer DURACON 205 or 223
- ④ 1st Sealer Coat DURACON 307 or 319
- ⑤ 2nd Sealer Coat DURACON 307 or 319

PRODUCT :	Duracon Flooring on Concrete Substrate		
TITLE :	Floor coating build up - DURACON SL		
NUMBER :	EDF-D1a	SCALE :	NTS
DRAWN BY :	NKT	DATE :	17-Oct-2023
REVIS		REVISED :	
Equus standard details are especially drawn for use by Local Authorities, Building Contractors, Equus Applicators, Architects and design professionals. All details are drawn to assist in the development of project-specific details. Details may be modified where necessary to accommodate job-specific requirements but must be approved by Equus Industries Ltd. All components must be supplied by Equus Industries Ltd. Equus reserves the right to alter or upgrade details at any time without prior notice.			

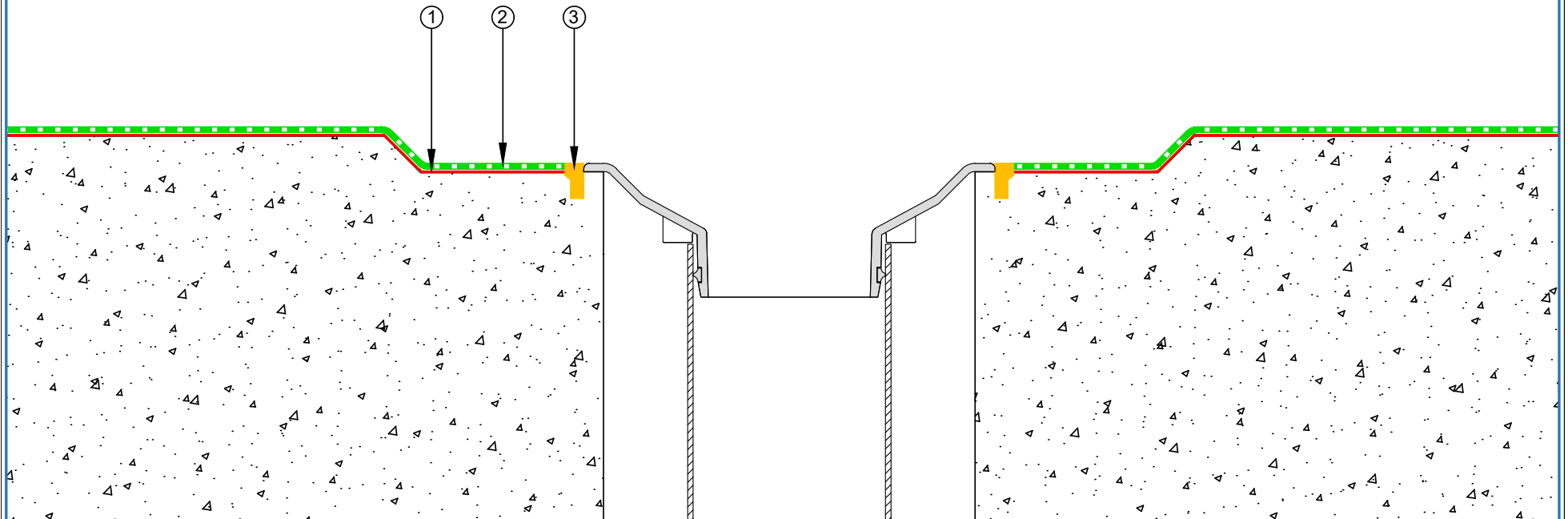


- ① Shot blasted or diamond ground concrete
- ② DURACON Primer
- ③ Wearing layer DURACON 205 or 223
- ④ Quartz or Walton park 18/36 broadcast into wet wearing layer
- ⑤ 1st Sealer Coat DURACON 307 or 319
- ⑥ 2nd Sealer Coat DURACON 307 or 319



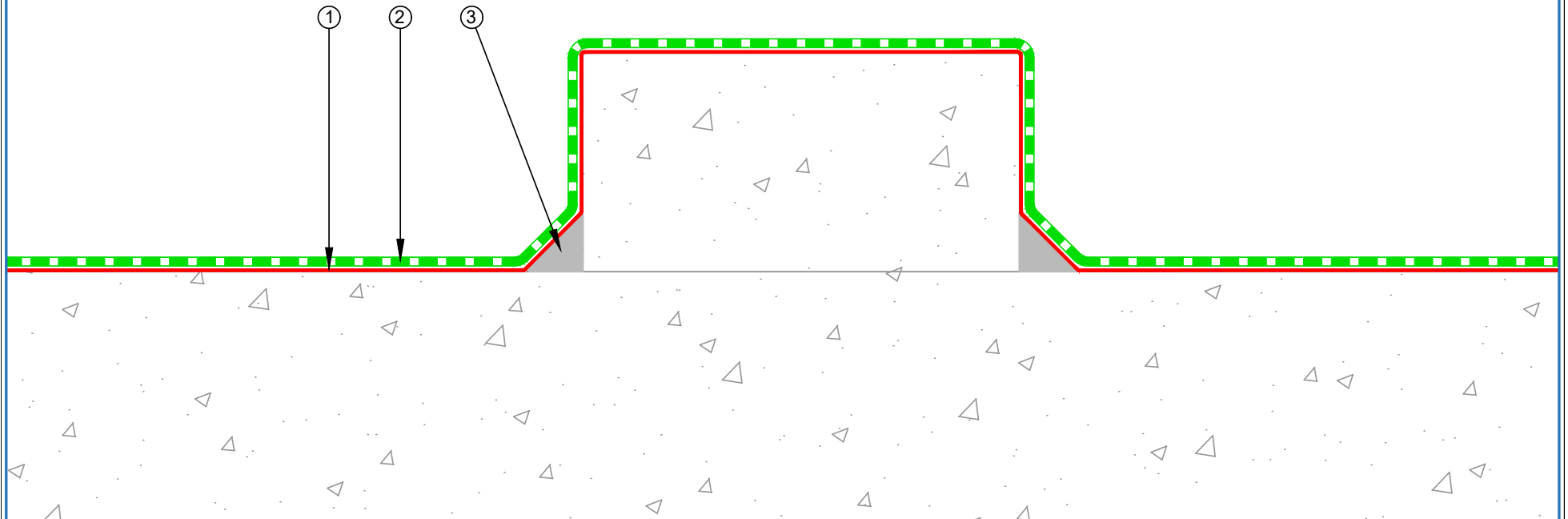
PRODUCT :	Duracon Flooring on Concrete Substrate		
TITLE :	Floor coating build up - DURACON BC		
NUMBER :	EDF-D1	SCALE :	NTS
DRAWN BY :	NKT	DATE :	17-Oct-2023
DRAWN BY :		REVISD :	
Equus standard details are especially drawn for use by Local Authorities, Building Contractors, Equus Applicators, Architects and design professionals. All details are drawn to assist in the development of project-specific details. Details may be modified where necessary to accommodate job-specific requirements but must be approved by Equus Industries Ltd. All components must be supplied by Equus Industries Ltd. Equus reserves the right to alter or upgrade details at any time without prior notice.			


- ① DURACON Primer
- ② DURACON Flooring
- ③ DURACON 223

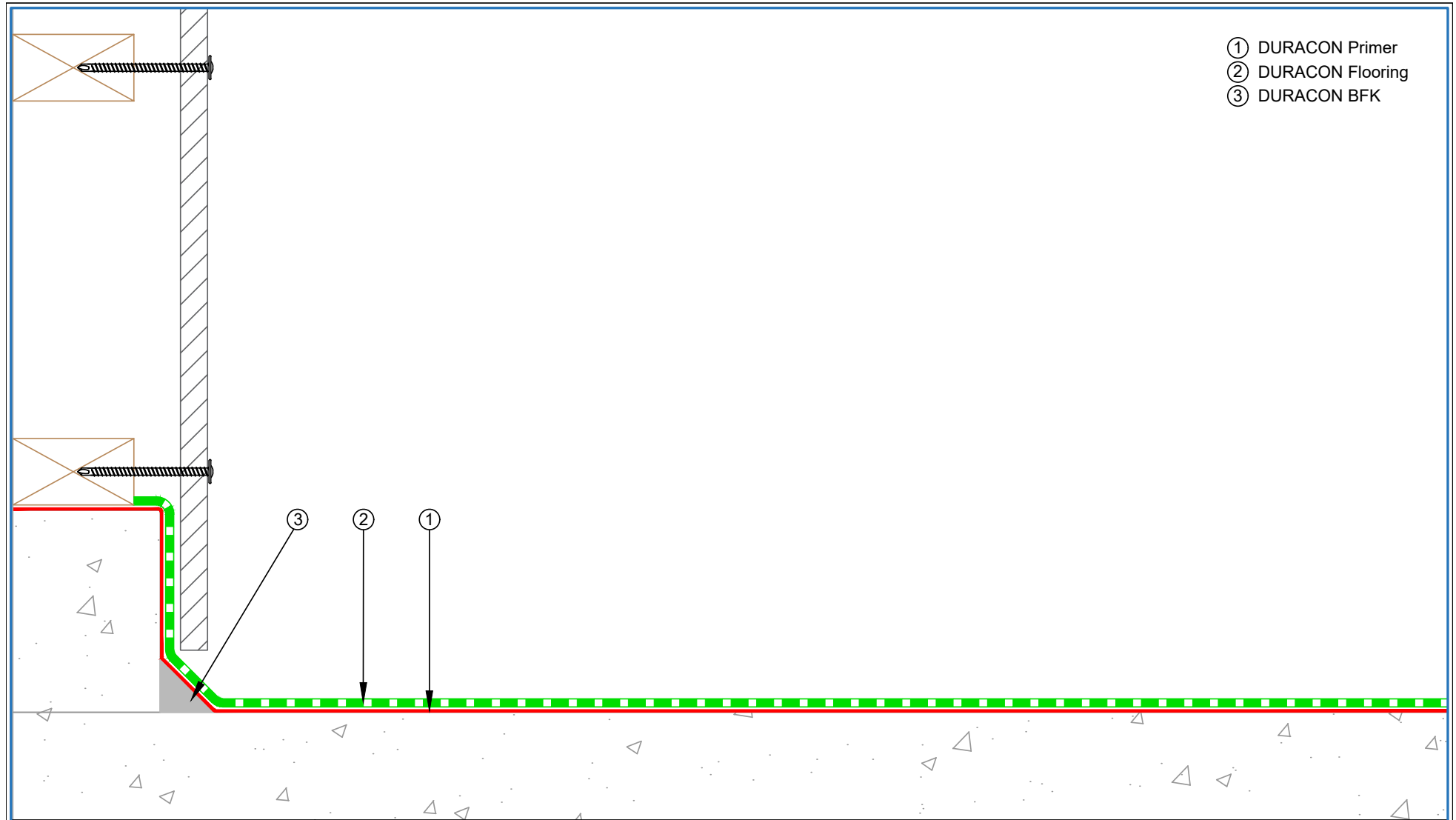


PRODUCT :	Duracon Flooring on Concrete Substrate		
TITLE :	Floor drain detail		
NUMBER :	EDF-D2	SCALE :	NTS
DRAWN BY :	NKT	DATE :	18-Sep-2023
Revised :			
Equus standard details are especially drawn for use by Local Authorities, Building Contractors, Equus Applicators, Architects and design professionals. All details are drawn to assist in the development of project-specific details. Details may be modified where necessary to accommodate job-specific requirements but must be approved by Equus Industries Ltd. All components must be supplied by Equus Industries Ltd. Equus reserves the right to alter or upgrade details at any time without prior notice.			


- ① DURACON Primer
- ② DURACON Flooring
- ③ DURACON BFK



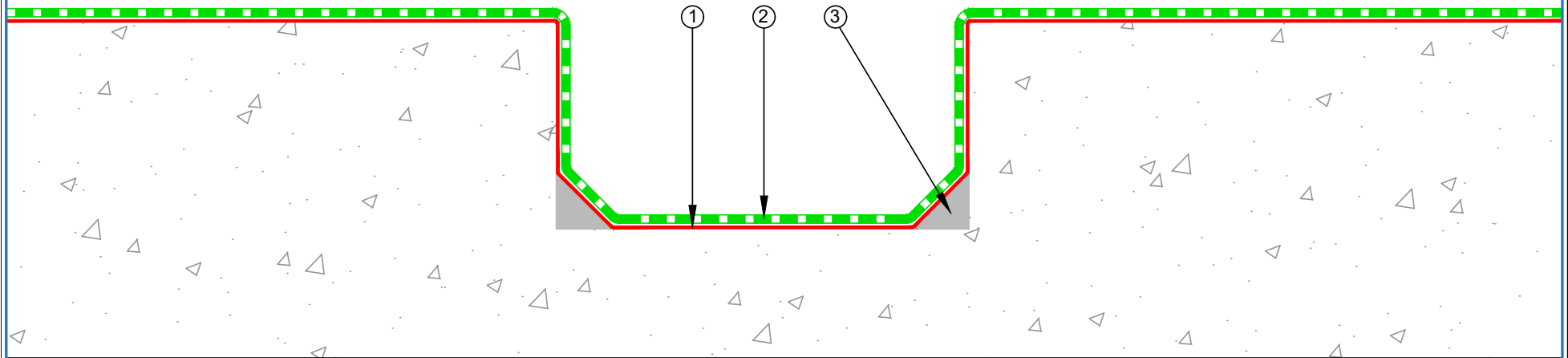
 E-mail : info@equus.nz Web : www.equus.nz	PRODUCT :	Duracon Flooring on Concrete Substrate		
	TITLE :	Concrete plinth detail		
	NUMBER :	EDF-D3	SCALE :	NTS
	DRAWN BY :	NKT	DATE :	18-Sep-2023
	REVISED :			
Equus standard details are especially drawn for use by Local Authorities, Building Contractors, Equus Applicators, Architects and design professionals. All details are drawn to assist in the development of project-specific details. Details may be modified where necessary to accommodate job-specific requirements but must be approved by Equus Industries Ltd. All components must be supplied by Equus Industries Ltd. Equus reserves the right to alter or upgrade details at any time without prior notice.				




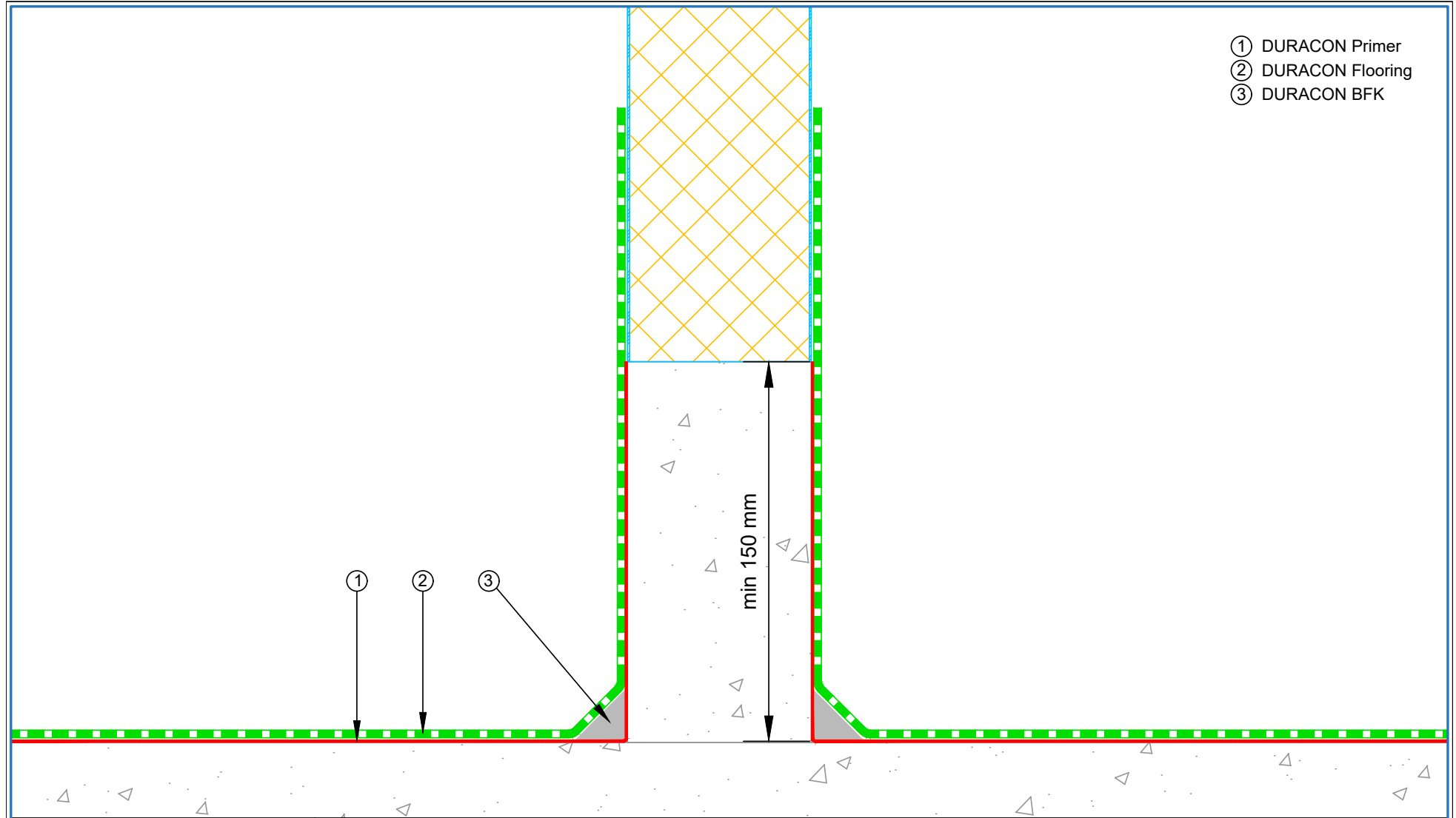
- ① DURACON Primer
- ② DURACON Flooring
- ③ DURACON BFK


 E-mail : info@equus.nz Web : www.equus.nz	PRODUCT :	Duracon Flooring on Concrete Substrate		
	TITLE :	Nib detail		
	NUMBER :	EDF-D4	SCALE :	NTS
	DRAWN BY :	NKT	DATE :	18-Sep-2023
			REVISED :	
Equus standard details are especially drawn for use by Local Authorities, Building Contractors, Equus Applicators, Architects and design professionals. All details are drawn to assist in the development of project-specific details. Details may be modified where necessary to accommodate job-specific requirements but must be approved by Equus Industries Ltd. All components must be supplied by Equus Industries Ltd. Equus reserves the right to alter or upgrade details at any time without prior notice.				

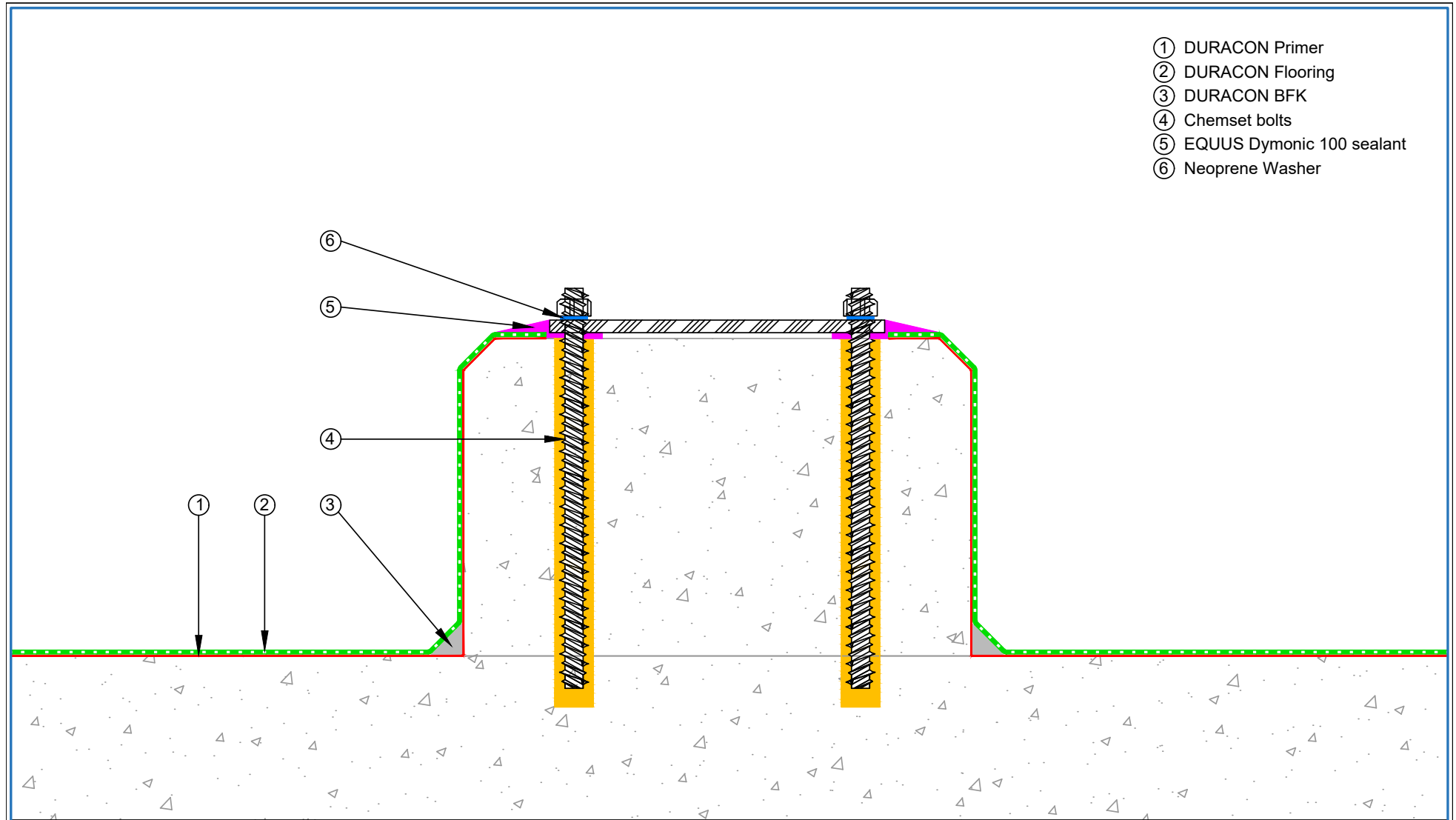
- ① DURACON Primer
- ② DURACON Flooring
- ③ DURACON BFK




 E-mail : info@equus.nz Web : www.equus.nz	PRODUCT :	Duracon Flooring on Concrete Substrate		
	TITLE :	Channel drain detail		
	NUMBER :	EDF-D5	SCALE :	NTS
	DRAWN BY :	NKT	DATE :	18-Sep-2023
Revised :				
Equus standard details are especially drawn for use by Local Authorities, Building Contractors, Equus Applicators, Architects and design professionals. All details are drawn to assist in the development of project-specific details. Details may be modified where necessary to accommodate job-specific requirements but must be approved by Equus Industries Ltd. All components must be supplied by Equus Industries Ltd. Equus reserves the right to alter or upgrade details at any time without prior notice.				



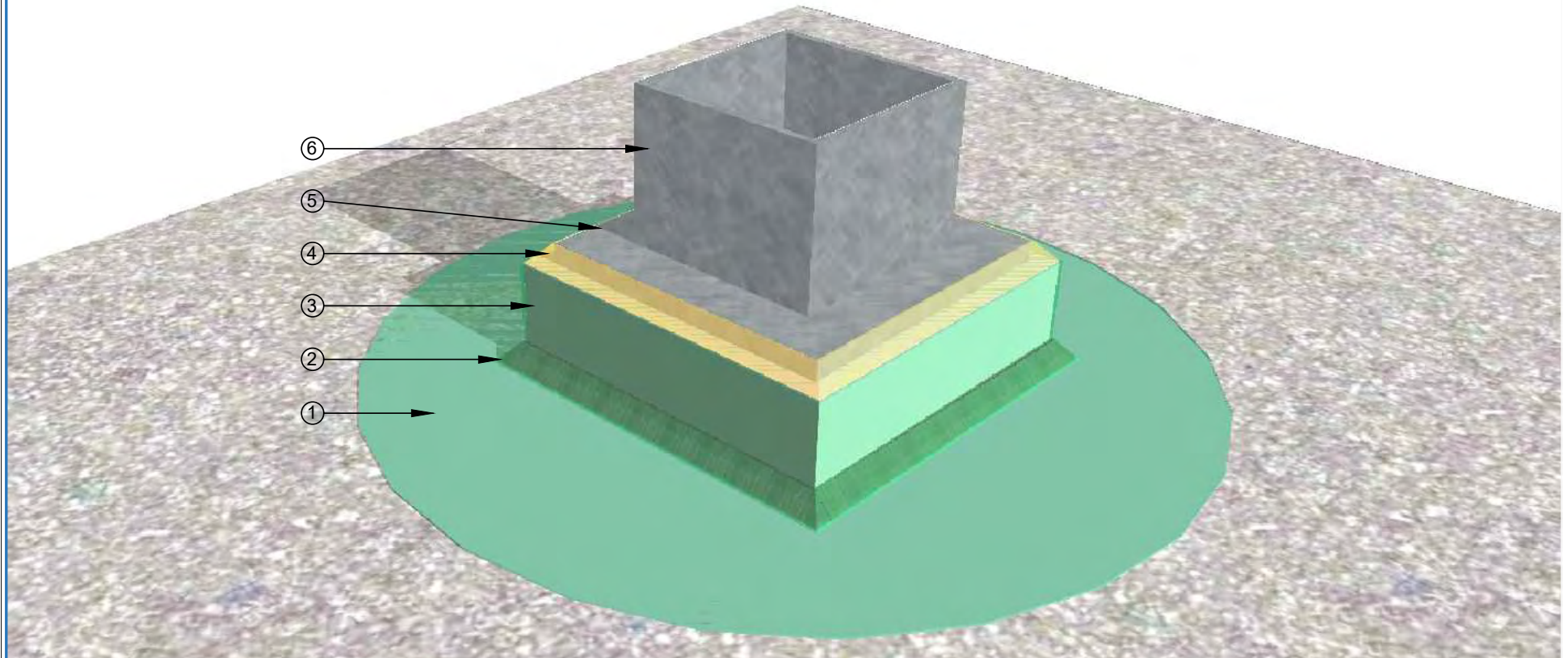
 E-mail : info@equus.nz Web : www.equus.nz	PRODUCT :	Duracon Flooring on Concrete Substrate		
	TITLE :	Cool store panel wall detail		
	NUMBER :	EDF-D6	SCALE :	NTS
	DRAWN BY :	NKT	DATE :	18-Sep-2023
	REVISED :			
Equus standard details are especially drawn for use by Local Authorities, Building Contractors, Equus Applicators, Architects and design professionals. All details are drawn to assist in the development of project-specific details. Details may be modified where necessary to accommodate job-specific requirements but must be approved by Equus Industries Ltd. All components must be supplied by Equus Industries Ltd. Equus reserves the right to alter or upgrade details at any time without prior notice.				



- ① DURACON Primer
- ② DURACON Flooring
- ③ DURACON BFK
- ④ Chemset bolts
- ⑤ EQUUS Dymonic 100 sealant
- ⑥ Neoprene Washer

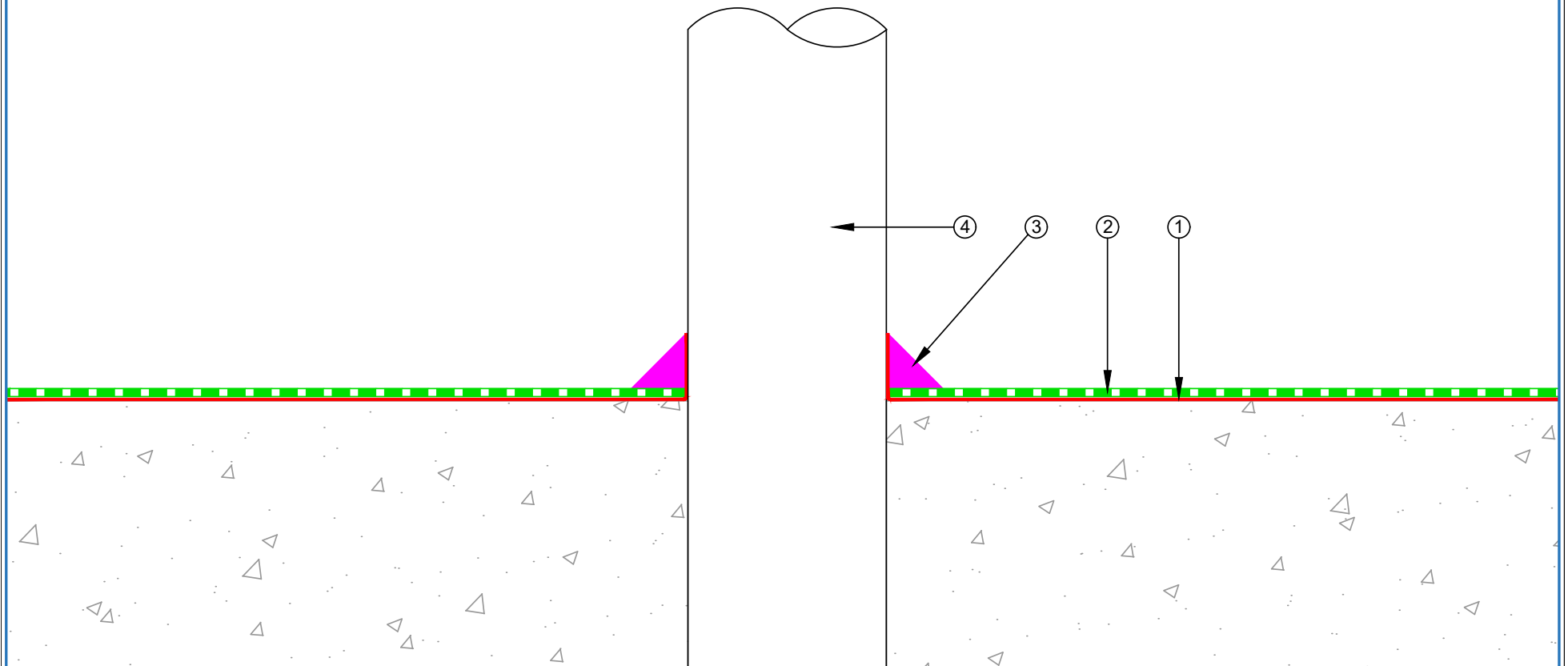
 E-mail : info@equus.nz Web : www.equus.nz	PRODUCT :	Duracon Flooring on Concrete Substrate		
	TITLE :	Standard fixing detail		
	NUMBER :	EDF-D7	SCALE :	NTS
	DRAWN BY :	NKT	DATE :	18-Sep-2023
			REVISED :	
Equus standard details are especially drawn for use by Local Authorities, Building Contractors, Equus Applicators, Architects and design professionals. All details are drawn to assist in the development of project-specific details. Details may be modified where necessary to accommodate job-specific requirements but must be approved by Equus Industries Ltd. All components must be supplied by Equus Industries Ltd. Equus reserves the right to alter or upgrade details at any time without prior notice.				


- ① DURACON Flooring on concrete substrate
- ② DURACON Cove
- ③ Solid DURACON plinth
- ④ EQUUS Dymonic 100 sealant
- ⑤ Steel base plate bolted through DURACON plinth to concrete
- ⑥ Steel post



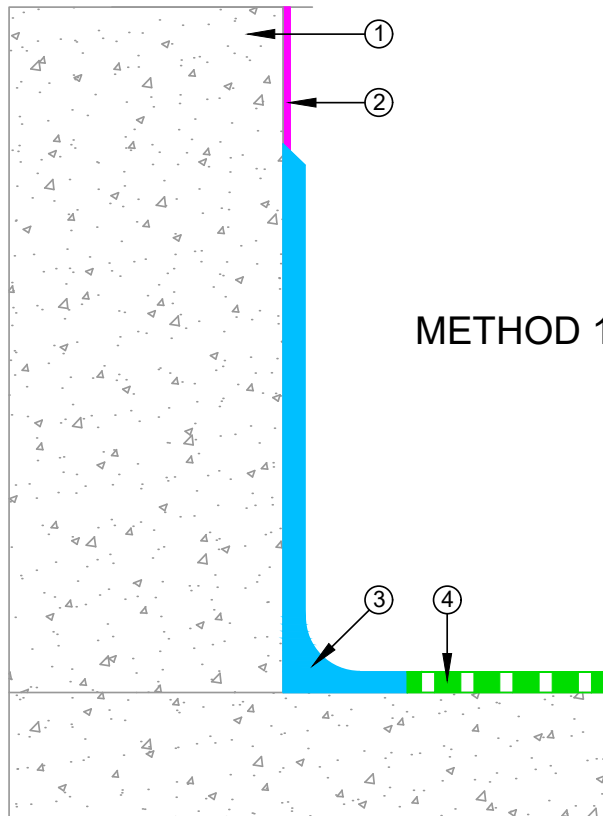
PRODUCT :	Duracon Flooring on Concrete Substrate		
TITLE :	Typical Plinth Detail		
NUMBER :	EDF-D7b	SCALE :	NTS
DRAWN BY :	NKT	DATE :	18-Oct-2023
Equus standard details are especially drawn for use by Local Authorities, Building Contractors, Equus Applicators, Architects and design professionals. All details are drawn to assist in the development of project-specific details. Details may be modified where necessary to accommodate job-specific requirements but must be approved by Equus Industries Ltd. All components must be supplied by Equus Industries Ltd. Equus reserves the right to alter or upgrade details at any time without prior notice.			

- ① DURACON Primer
- ② DURACON Flooring
- ③ EQUUS Dymonic 100 sealant
- ④ Penetration

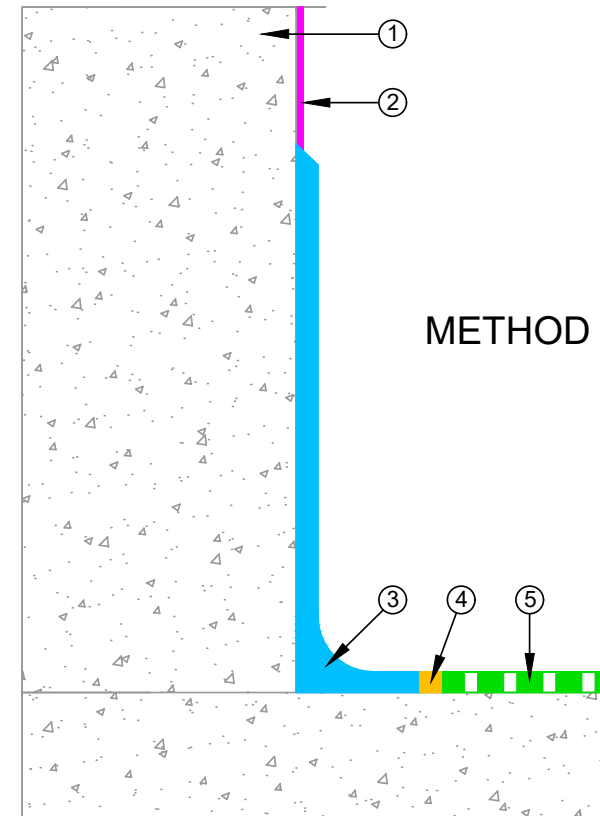


 E-mail : info@equus.nz Web : www.equus.nz	PRODUCT :	Duracon Flooring on Concrete Substrate		
	TITLE :	Penetration detail		
	NUMBER :	EDF-D8	SCALE :	NTS
	DRAWN BY :	NKT	DATE :	18-Sep-2023
			REVISED :	
Equus standard details are especially drawn for use by Local Authorities, Building Contractors, Equus Applicators, Architects and design professionals. All details are drawn to assist in the development of project-specific details. Details may be modified where necessary to accommodate job-specific requirements but must be approved by Equus Industries Ltd. All components must be supplied by Equus Industries Ltd. Equus reserves the right to alter or upgrade details at any time without prior notice.				

- ① Precast Concrete Wall
- ② Epistixx Epoxy (wet areas) / Colourglaze (dry areas)
- ③ DURACON Cove, Height = 400 mm, Radius 30-40 mm
- ④ DURACON Flooring



- ① Precast Concrete Wall
- ② Epistixx Epoxy (wet areas) / Colourglaze (dry areas)
- ③ DURACON Cove, Height = 400 mm, Radius 30-40 mm
- ④ Chase cold joint fill with DURACON 223 flexible resin
- ⑤ DURACON Flooring

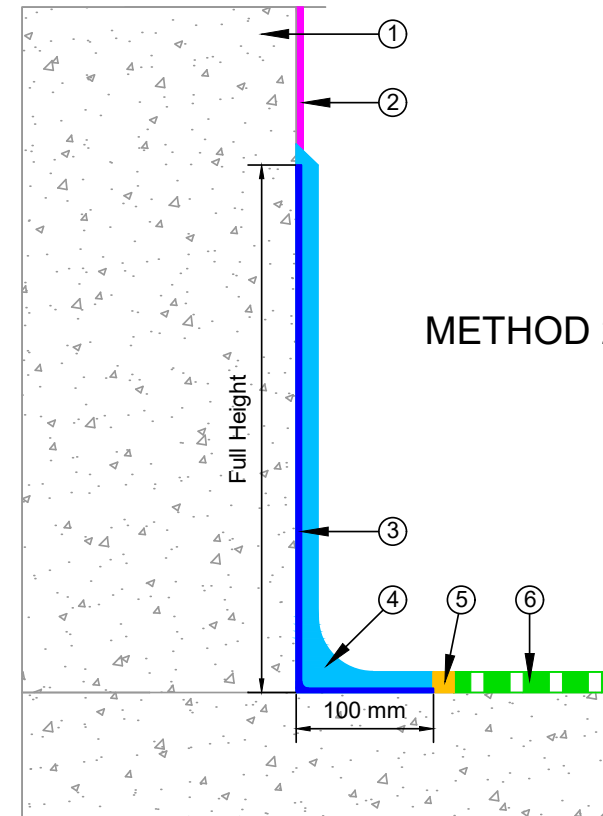
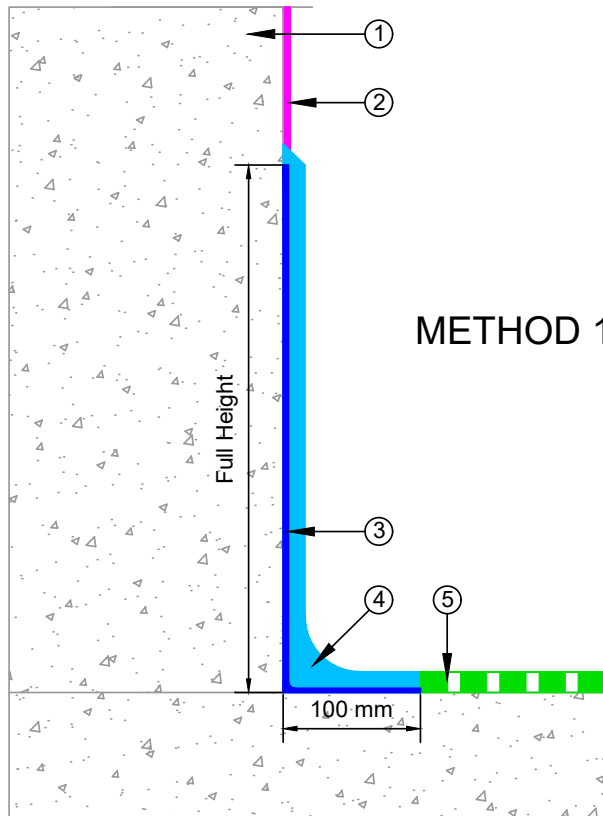


PRODUCT :	Duracon Flooring on Concrete Substrate		
TITLE :	Coves and connections to vertical surfaces detail		
NUMBER :	EDF-D9a	SCALE :	NTS
DRAWN BY :	NKT	DATE :	02-Oct-2023
		REVISED :	

Equus standard details are especially drawn for use by Local Authorities, Building Contractors, Equus Applicators, Architects and design professionals. All details are drawn to assist in the development of project-specific details. Details may be modified where necessary to accommodate job-specific requirements but must be approved by Equus Industries Ltd. All components must be supplied by Equus Industries Ltd. Equus reserves the right to alter or upgrade details at any time without prior notice.

- ① Precast Concrete Wall
- ② Epistixx Epoxy (wet areas) / Colourglaze (dry areas)
- ③ Matacyl Thixx flexible resin to floor / wall junction
- ④ DURACON Cove, Height = 400 mm, Radius 30-40 mm
- ⑤ DURACON Flooring

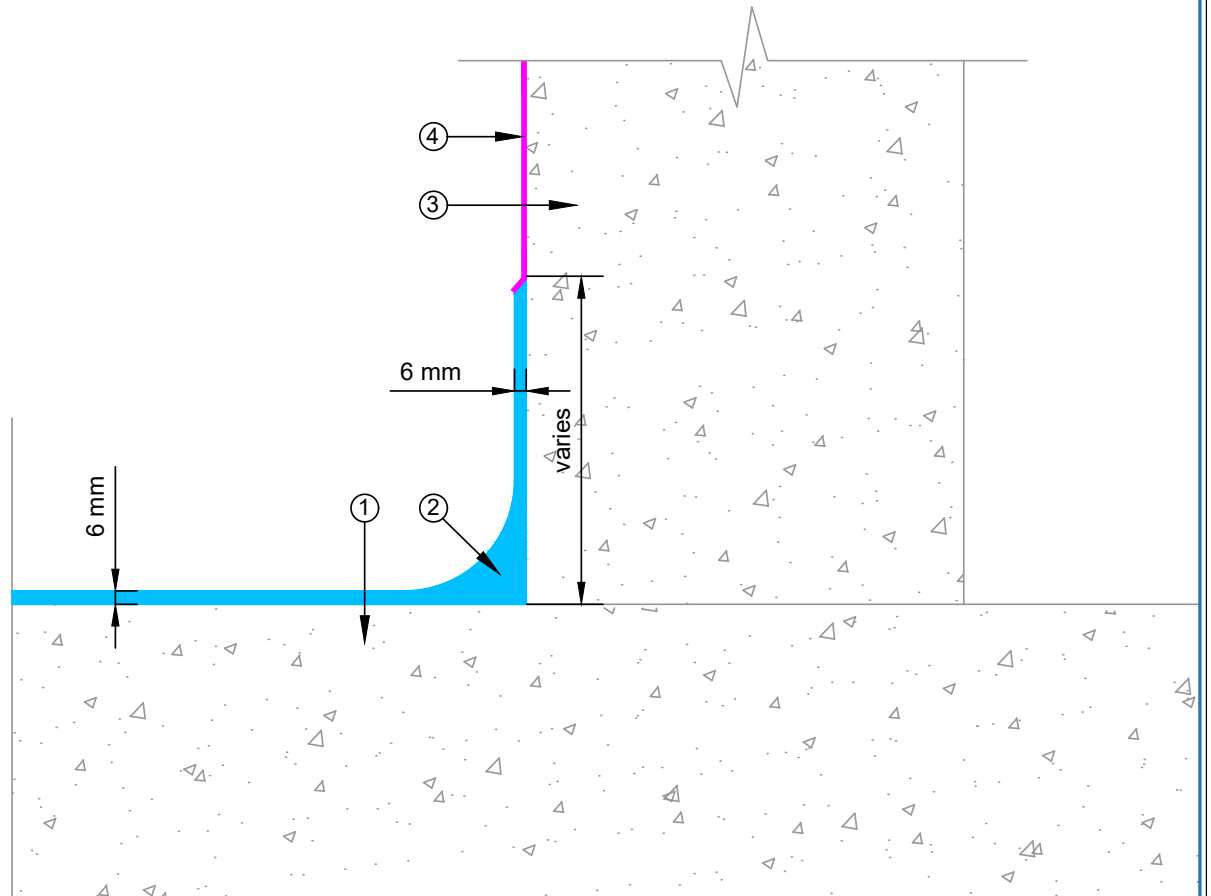
- ① Precast Concrete Wall
- ② Epistixx Epoxy (wet areas) / Colourglaze (dry areas)
- ③ Matacyl Thixx flexible resin to floor / wall junction
- ④ DURACON Cove, Height = 400 mm, Radius 30-40 mm
- ⑤ Chase cold joint fill with DURACON 223 flexible resin
- ⑥ DURACON Flooring



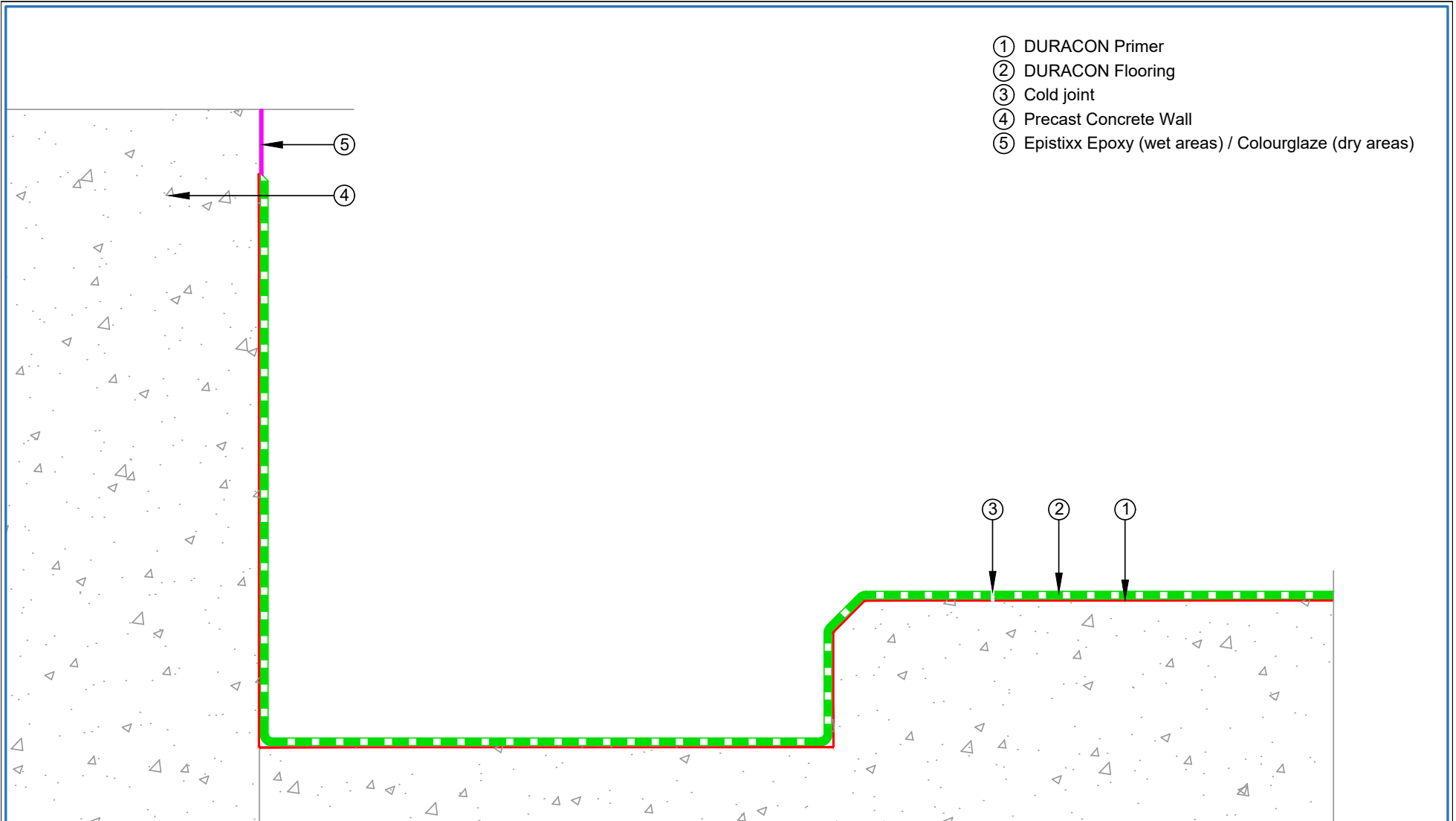
PRODUCT :	Duracon Flooring on Concrete Substrate		
TITLE :	Flexible coves and connections to vertical surfaces detail		
NUMBER :	EDF-D9b	SCALE :	NTS
DRAWN BY :	NKT	DATE :	02-Oct-2023
REVISED :			


Equus standard details are especially drawn for use by Local Authorities, Building Contractors, Equus Applicators, Architects and design professionals. All details are drawn to assist in the development of project-specific details. Details may be modified where necessary to accommodate job-specific requirements but must be approved by Equus Industries Ltd. All components must be supplied by Equus Industries Ltd. Equus reserves the right to alter or upgrade details at any time without prior notice.

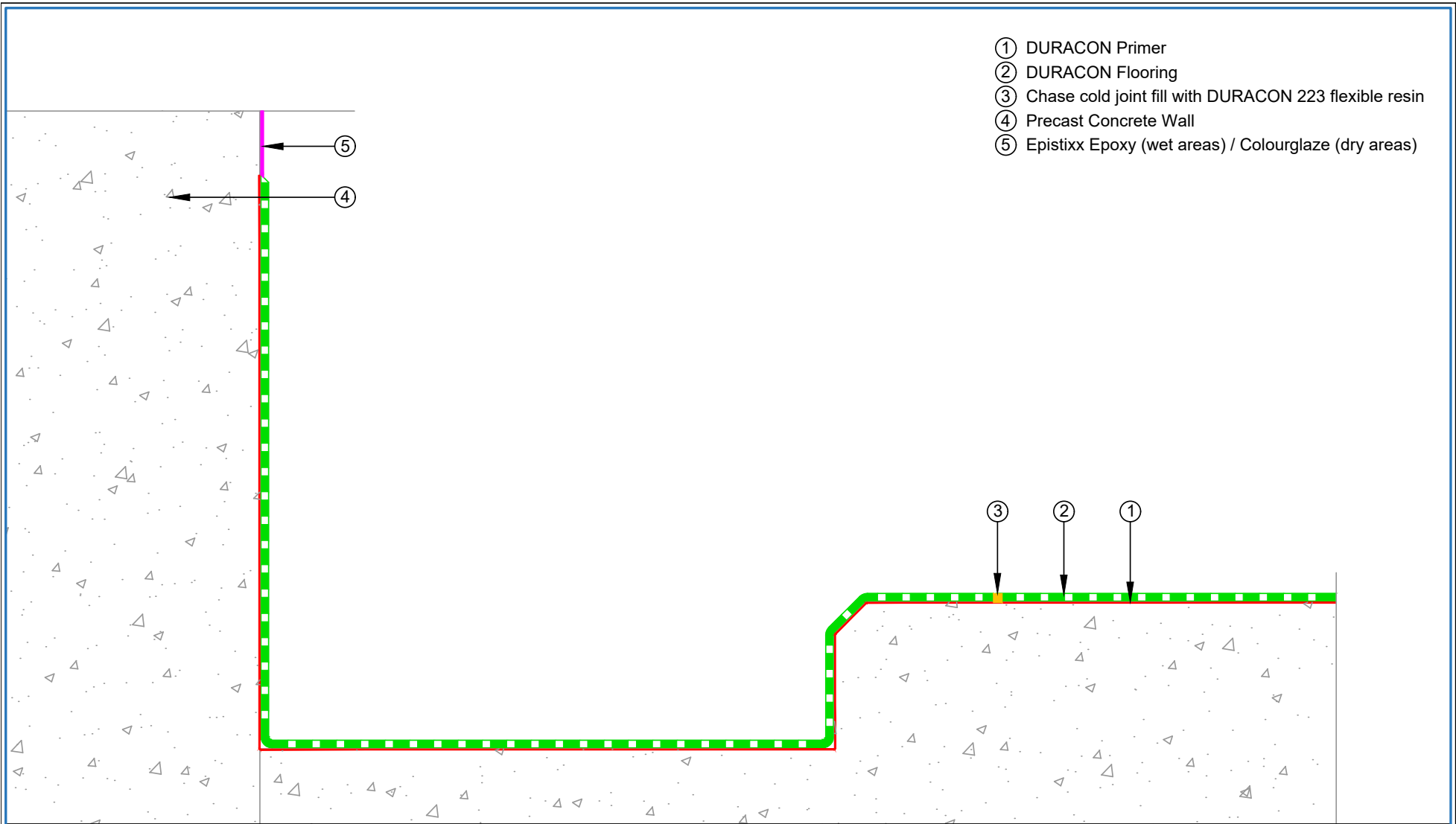
- ① Floor
- ② DURACON BC Slip resistant coating with 50-70 rad. cove
- ③ Wall
- ④ Epistixx Epoxy Hygienic Wall Coating finished down to DURACON BC and lapped at 45°




PRODUCT :	Duracon Flooring on Concrete Substrate		
TITLE :	Coves and connections to hygienic wall detail		
NUMBER :	EDF-D10	SCALE :	NTS
DRAWN BY :	NKT	DATE :	02-Oct-2023
REVISED :			
Equus standard details are especially drawn for use by Local Authorities, Building Contractors, Equus Applicators, Architects and design professionals. All details are drawn to assist in the development of project-specific details. Details may be modified where necessary to accommodate job-specific requirements but must be approved by Equus Industries Ltd. All components must be supplied by Equus Industries Ltd. Equus reserves the right to alter or upgrade details at any time without prior notice.			

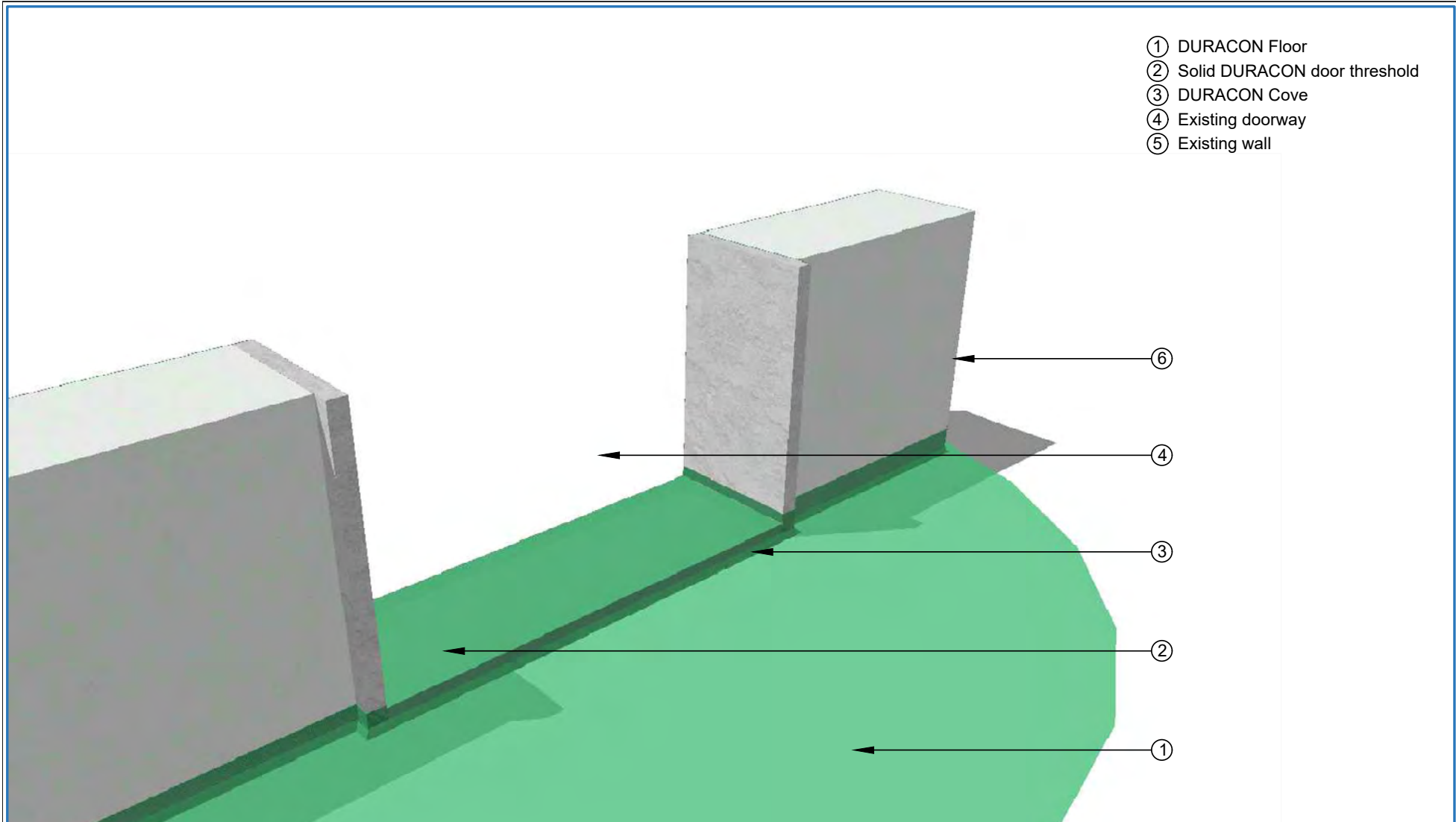



 E-mail : info@equus.nz Web : www.equus.nz	PRODUCT :	Duracon Flooring on Concrete Substrate		
	TITLE :	Perimeter drain detail - Method 1		
	NUMBER :	EDF-D11a	SCALE :	NTS
	DRAWN BY :	NKT	DATE :	02-Oct-2023
	REVISED :			
Equus standard details are especially drawn for use by Local Authorities, Building Contractors, Equus Applicators, Architects and design professionals. All details are drawn to assist in the development of project-specific details. Details may be modified where necessary to accommodate job-specific requirements but must be approved by Equus Industries Ltd. All components must be supplied by Equus Industries Ltd. Equus reserves the right to alter or upgrade details at any time without prior notice.				



- ① DURACON Primer
- ② DURACON Flooring
- ③ Chase cold joint fill with DURACON 223 flexible resin
- ④ Precast Concrete Wall
- ⑤ Epistix Epoxy (wet areas) / Colouglaze (dry areas)

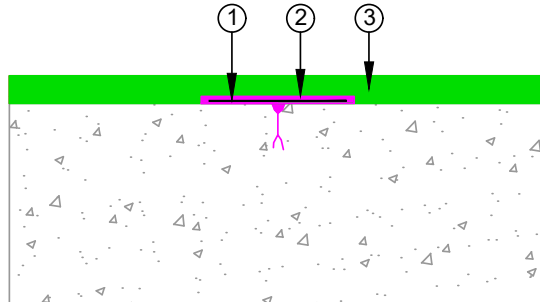
 E-mail : info@equus.nz Web : www.equus.nz	PRODUCT :	Duracon Flooring on Concrete Substrate		
	TITLE :	Perimeter drain detail - Method 2		
	NUMBER :	EDF-D11b	SCALE :	NTS
	DRAWN BY :	NKT	DATE :	02-Oct-2023
	REVISED :			
Equus standard details are especially drawn for use by Local Authorities, Building Contractors, Equus Applicators, Architects and design professionals. All details are drawn to assist in the development of project-specific details. Details may be modified where necessary to accommodate job-specific requirements but must be approved by Equus Industries Ltd. All components must be supplied by Equus Industries Ltd. Equus reserves the right to alter or upgrade details at any time without prior notice.				



 E-mail : info@equus.nz Web : www.equus.nz	PRODUCT :	Duracon Flooring on Concrete Substrate		
	TITLE :	Door threshold Detail		
	NUMBER :	EDF-D13	SCALE :	NTS
	DRAWN BY :	NKT	DATE :	18-Oct-2023
			REVISED :	
Equus standard details are especially drawn for use by Local Authorities, Building Contractors, Equus Applicators, Architects and design professionals. All details are drawn to assist in the development of project-specific details. Details may be modified where necessary to accommodate job-specific requirements but must be approved by Equus Industries Ltd. All components must be supplied by Equus Industries Ltd. Equus reserves the right to alter or upgrade details at any time without prior notice.				

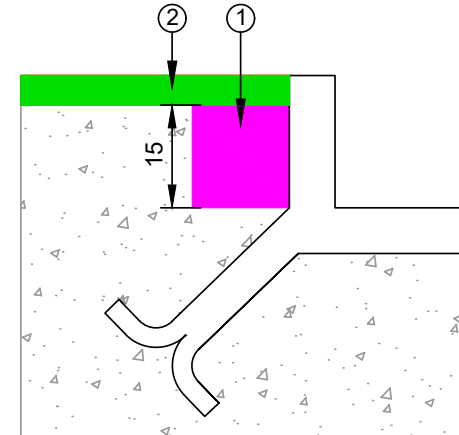
CRACK IN THE SUBSTRATE

- ① Fabric
- ② DURACON 223 flexibled binder
- ③ DURACON Flooring



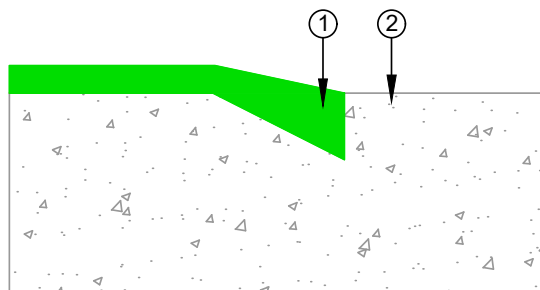
CONNECTIONS TO DRAINAGE SYSTEM & SUMPS

- ① Cut connection. Fill with DURACON 223 flexibled resin
- ② DURACON Flooring



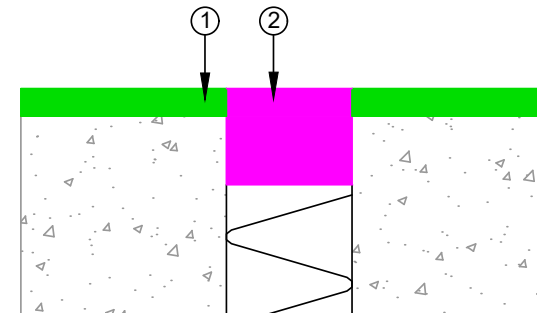
CONNECTION TO VERTICAL SURFACE
FREE CONNECTION AT THE DURACON FLOORING END

- ① DURACON Flooring
- ② Connecting area



Expansion Joints

- ① DURACON Flooring
- ② Approved Sealant



PRODUCT :	Duracon Flooring on Concrete Substrate		
TITLE :	Typical Detail		
NUMBER :	EDF-D14	SCALE :	NTS
DRAWN BY :	NKT	DATE :	04-Oct-2023
REVISED :			

Equus standard details are especially drawn for use by Local Authorities, Building Contractors, Equus Applicators, Architects and design professionals. All details are drawn to assist in the development of project-specific details. Details may be modified where necessary to accommodate job-specific requirements but must be approved by Equus Industries Ltd. All components must be supplied by Equus Industries Ltd. Equus reserves the right to alter or upgrade details at any time without prior notice.