



EQUUS SOPREMA DUOTHERM WARM ROOF SYSTEM

Standard Details on Metal Substrate



CELEBRATING
40 YEARS
1982-2022

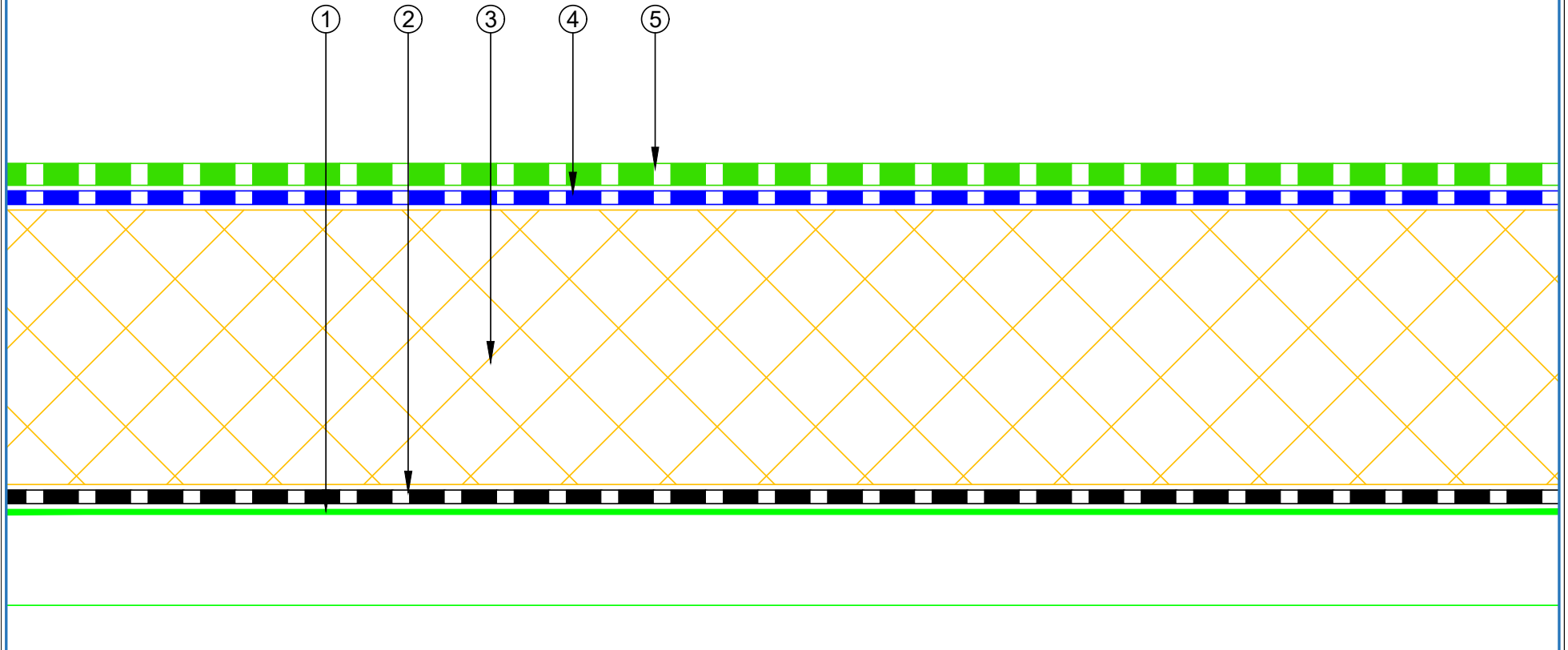




MAY 2023

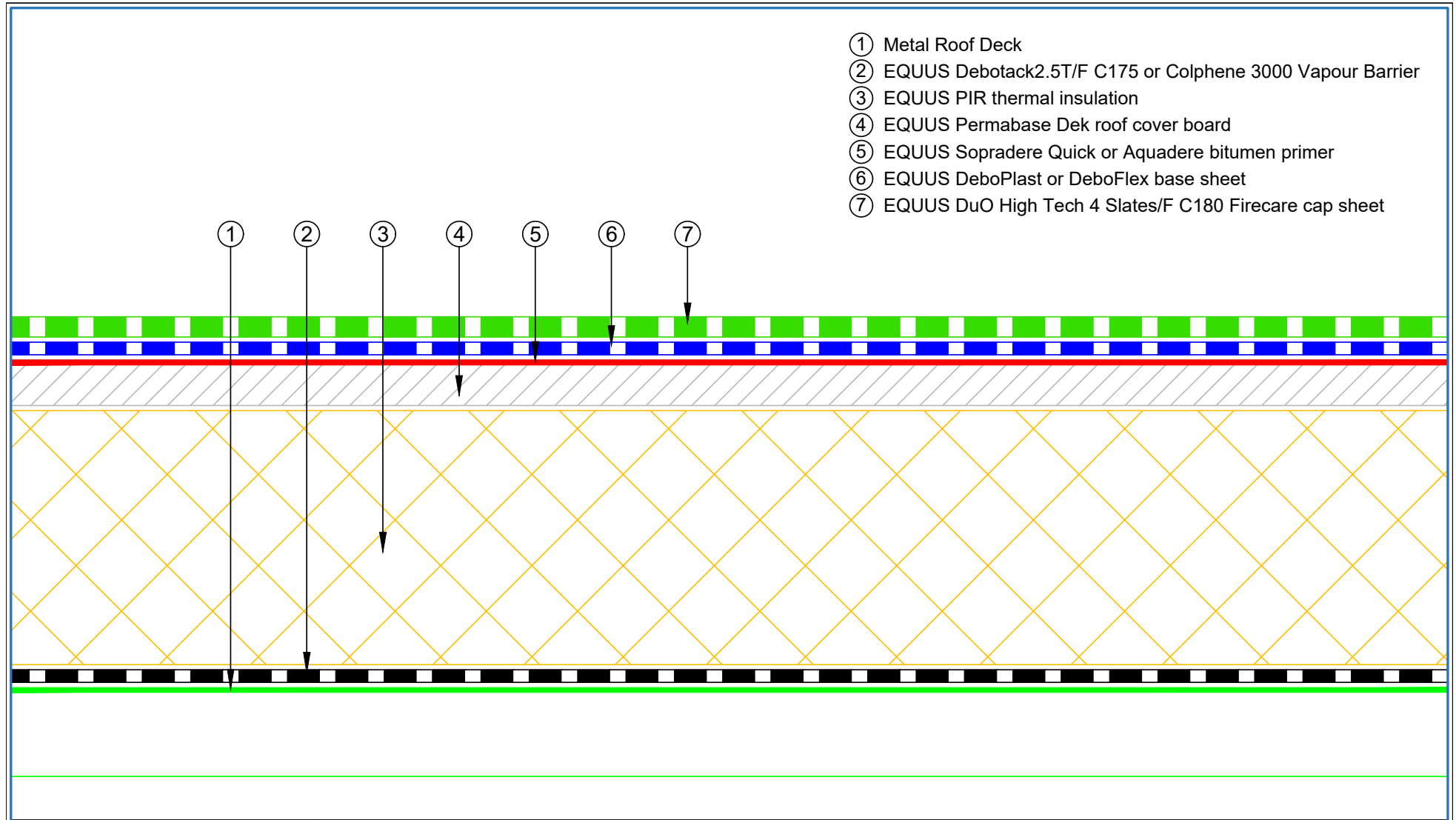
CONTENTS

SDWRM-D0a	Roof Build Up with PIR	1	SDWRM-D5c	Standard Pipe or SHS Penetration with Cover Board (PIR)	18
SDWRM-D0b	Roof Build Up with PIR and Roof Board	2	SDWRM-D5d	Standard Pipe or SHS with Cover Board (Mineral Wool)	19
SDWRM-D0c	Roof Build Up with Mineral Wool Insulation	3	SDWRM-D6a	Electrical Conduit (PIR Insulation)	20
SDWRM-D0d	Roof build Up with Mineral Wool Insulation and Roof Board	4	SDWRM-D6b	Electrical Conduit (Mineral Wool Insulation)	21
SDWRM-D1a	Concrete Parapet Detail with Roof Cap Flashing	5	SDWRM-D6c	Electrical Conduit with Roof Coverboard (Mineral Wool)	22
SDWRM-D1b	Concrete Parapet with Roof Edge Profile (PIR Insulation)	6	SDWRM-D7a	Roof Equipment Support Batten (PIR Insulation)	23
SDWRM-D1c	Concrete Parapet with Roof Cap Flashing (Mineral Wool)	7	SDWRM-D7b	Roof Equipment Support Batten (Mineral Wool)	24
SDWRM-D1d	Concrete Parapet with Roof Edge Profile (Mineral Wool)	8	SDWRM-D7c	Roof Equipment Support Batten – Optional (PIR Insulation)	25
SDWRM-D2a	Plywood Parapet with Roof Cap Flashing (PIR Insulation)	9	SDWRM-D7d	Roof Equipment Support Batten – Optional (Mineral Wool)	26
SDWRM-D2b	Plywood Parapet with Roof Edge Profile (PIR)	10	SDWRM-D8a	Skylight Detail (PIR Insulation)	27
SDWRM-D2c	Plywood Parapet with Roof Cap Flashing (Mineral Wool)	11	SDWRM-D8b	Skylight Detail (Mineral Wool Insulation)	28
SDWRM-D2d	Plywood Parapet with Roof Edge Profile (PIR Insulation)	12	SDWRM-D9a	Fall Restraint (PIR Insulation)	29
SDWRM-D3a	Allproof Dome Clamp Ring Drain	13	SDWRM-D9b	Fall Restraint (Mineral Wool Insulation)	30
SDWRM-D3b	Aquaknight HiFlow Roof Drain	14	SDWRM-D10a	Connection to External Gutter (PIR Insulation)	31
SDWRM-D3c	Allproof Dome Clamp Ring Drain	15	SDWRM-D10b	Connection to External Gutter (Mineral Wool Insulation)	32
SDWRM-D5a	Standard Pipe or SHS Penetration (PIR)	16			
SDWRM-D5b	Standard Pipe or SHS Penetration (Mineral Wool)	17			

- ① Metal Roof Deck
- ② EQUUS Debotack2.5T/F C175 or Colphene 3000 Vapour Barrier
- ③ EQUUS PIR thermal insulation
- ④ EQUUS Debotack 2.5 T/F C175 Aero base sheet
- ⑤ EQUUS DuO High Tech 4 Slates/F C180 Firecare cap sheet



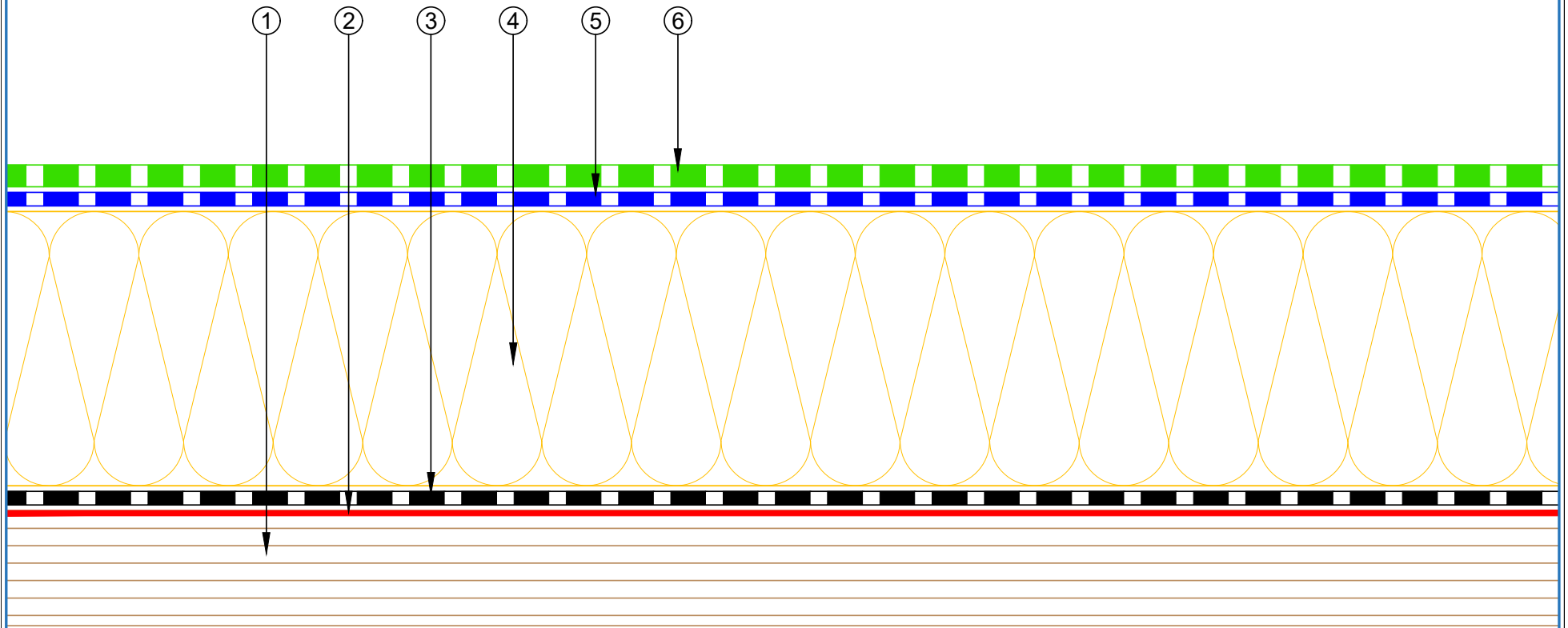
 E-mail : admin@equus.co.nz Web : www.equus.co.nz	PROJECT :		Warm Roof on Metal Standard Detail - DuO			
	TITLE :		Roof build up with PIR			
	NUMBER :		SDWRM-D0a	SCALE :	1 : 1	
	DRAWN BY :		NKT	DATE :	16-Dec-2021	REVISED :
	<p><small>Equus Waterproof Membrane Details are specially drawn for use by Local Authorities, Building Contractors, Equus Applicators, Architects and design professionals. All details are drawn to assist in the development of project specific details. Details may be modified where necessary to accommodate job specific requirements but must be approved by Equus Industries Ltd. All components must be supplied by Equus Industries Ltd. Equus reserves the right to alter or upgrade details at any time without prior notice.</small></p>					
						





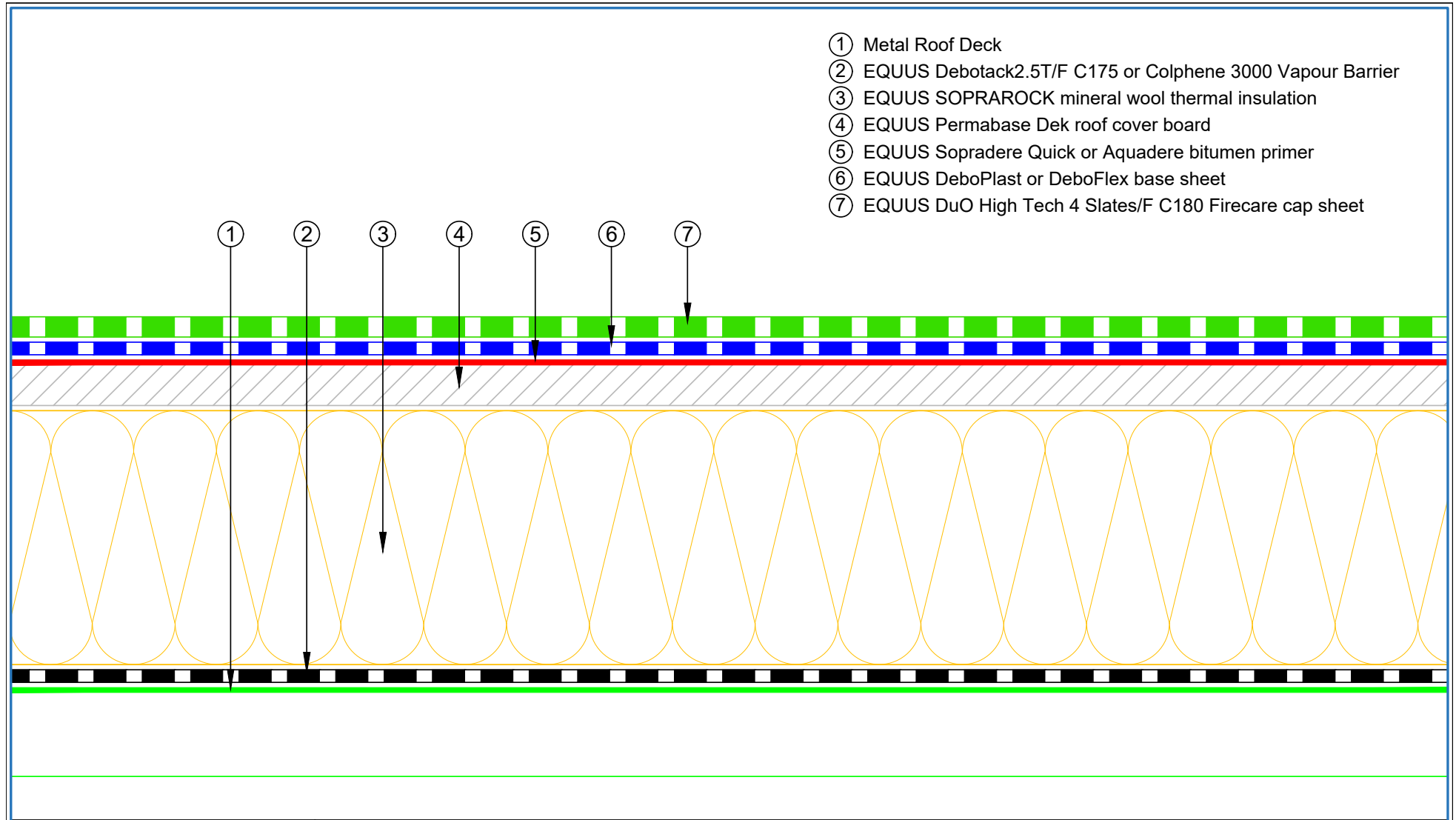
- ① Metal Roof Deck
- ② EQUUS Debotack2.5T/F C175 or Colphene 3000 Vapour Barrier
- ③ EQUUS PIR thermal insulation
- ④ EQUUS Permabase Dek roof cover board
- ⑤ EQUUS Sopradere Quick or Aquadere bitumen primer
- ⑥ EQUUS DeboPlast or DeboFlex base sheet
- ⑦ EQUUS DuO High Tech 4 Slates/F C180 Firecare cap sheet

 E-mail : admin@equus.co.nz Web : www.equus.co.nz	PROJECT :		Warm Roof on Metal Standard Detail - DuO		 AUTHORIZED DISTRIBUTOR SOPREMA
	TITLE :		Roof build up with PIR and roof board		
	NUMBER :	SDWRM-D0b	SCALE :	1 : 1	
	DRAWN BY :	NKT	DATE :	01-Jan-2022	
	Equus Waterproof Membrane Details are specially drawn for use by Local Authorities, Building Contractors, Equus Applicators, Architects and design professionals. All details are drawn to assist in the development of project specific details. Details may be modified where necessary to accommodate job specific requirements but must be approved by Equus Industries Ltd. All components must be supplied by Equus Industries Ltd. Equus reserves the right to alter or upgrade details at any time without prior notice.		REVISED :		



- ① Plywood Deck
- ② EQUUS Sopradere Quick or Aquadere bitumen primer
- ③ EQUUS Debotack2.5T/F C175 or Colphene 3000 Vapour Barrier
- ④ EQUUS SOPRAROCK mineral wool thermal insulation
- ⑤ EQUUS DeboPlast or DeboFlex base sheet
- ⑥ EQUUS DuO High Tech 4 Slates/F C180 Firecare cap sheet

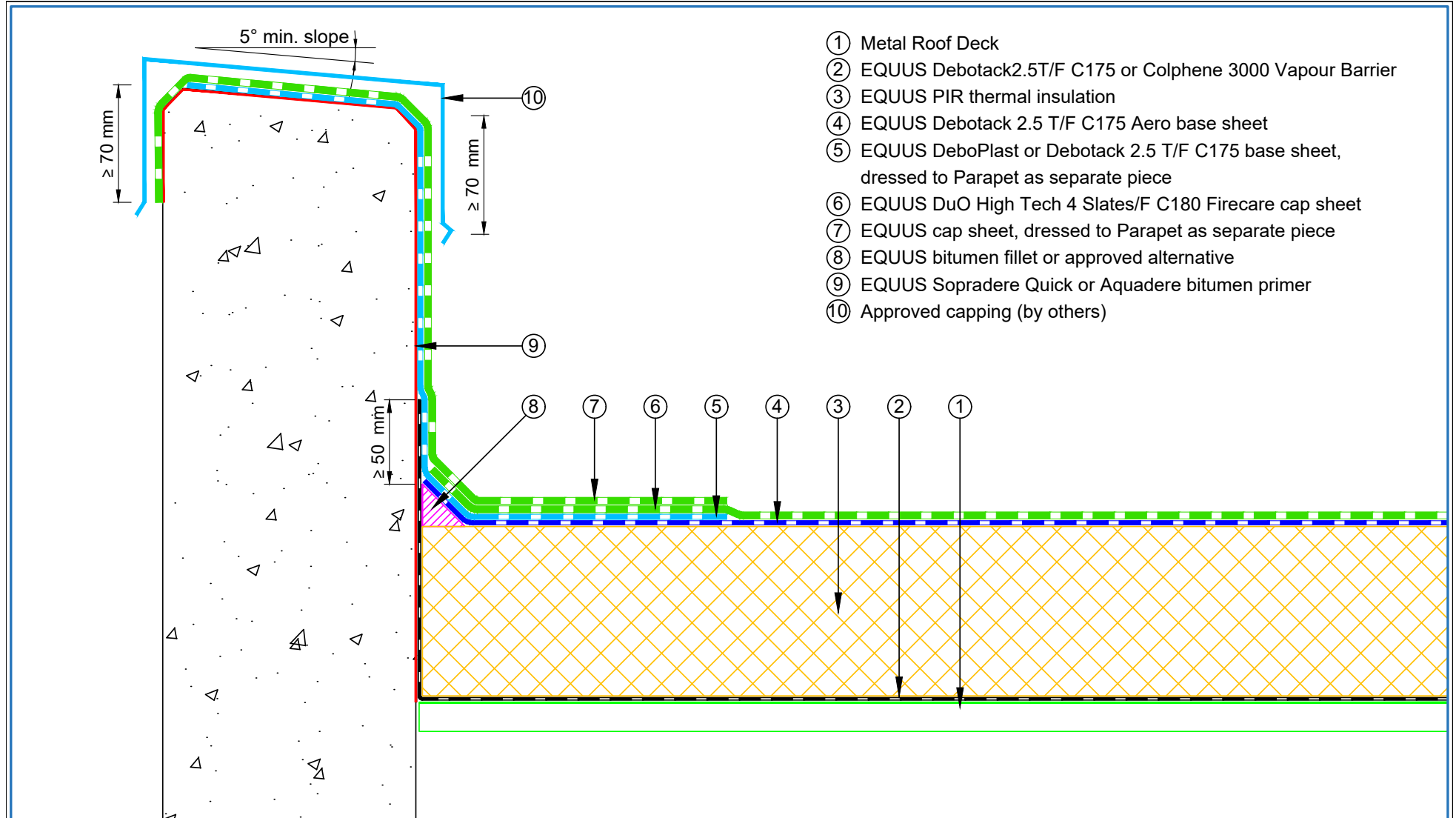


 E-mail : admin@equus.co.nz Web : www.equus.co.nz	PROJECT :		Warm Roof on Plywood Standard Detail		 AUTHORISED DISTRIBUTOR SOPREMA	
	TITLE :		Roof build up with Mineral wool insulation			
	NUMBER :		SDWRP-D0c	SCALE :		1 : 1 @A4
	DRAWN BY :		NKT	DATE :		25-Apr-2022
				REVISED :		
<p><small>Equus Waterproof Membrane Details are specially drawn for use by Local Authorities, Building Contractors, Equus Applicators, Architects and design professionals. All details are drawn to assist in the development of project specific details. Details may be modified where necessary to accommodate job specific requirements but must be approved by Equus Industries Ltd. All components must be supplied by Equus Industries Ltd. Equus reserves the right to alter or upgrade details at any time without prior notice.</small></p>						



- ① Metal Roof Deck
- ② EQUUS Debotack2.5T/F C175 or Colphene 3000 Vapour Barrier
- ③ EQUUS SOPRAROCK mineral wool thermal insulation
- ④ EQUUS Permabase Dek roof cover board
- ⑤ EQUUS Sopradere Quick or Aquadere bitumen primer
- ⑥ EQUUS DeboPlast or DeboFlex base sheet
- ⑦ EQUUS DuO High Tech 4 Slates/F C180 Firecare cap sheet

 E-mail : admin@equus.co.nz Web : www.equus.co.nz	PROJECT :		Warm Roof on Metal Standard Detail - DuO		 AUTHORISED DISTRIBUTOR SOPREMA	
	TITLE :		Roof build up with Mineral wool insulation and Roof board			
	NUMBER :		SDWRM-D0d	SCALE :		1 : 1
	DRAWN BY :		NKT	DATE :		01-Jan-2022
				REVISED :		
<p><small>Equus Waterproof Membrane Details are specially drawn for use by Local Authorities, Building Contractors, Equus Applicators, Architects and design professionals. All details are drawn to assist in the development of project specific details. Details may be modified where necessary to accommodate job specific requirements but must be approved by Equus Industries Ltd. All components must be supplied by Equus Industries Ltd. Equus reserves the right to alter or upgrade details at any time without prior notice.</small></p>						

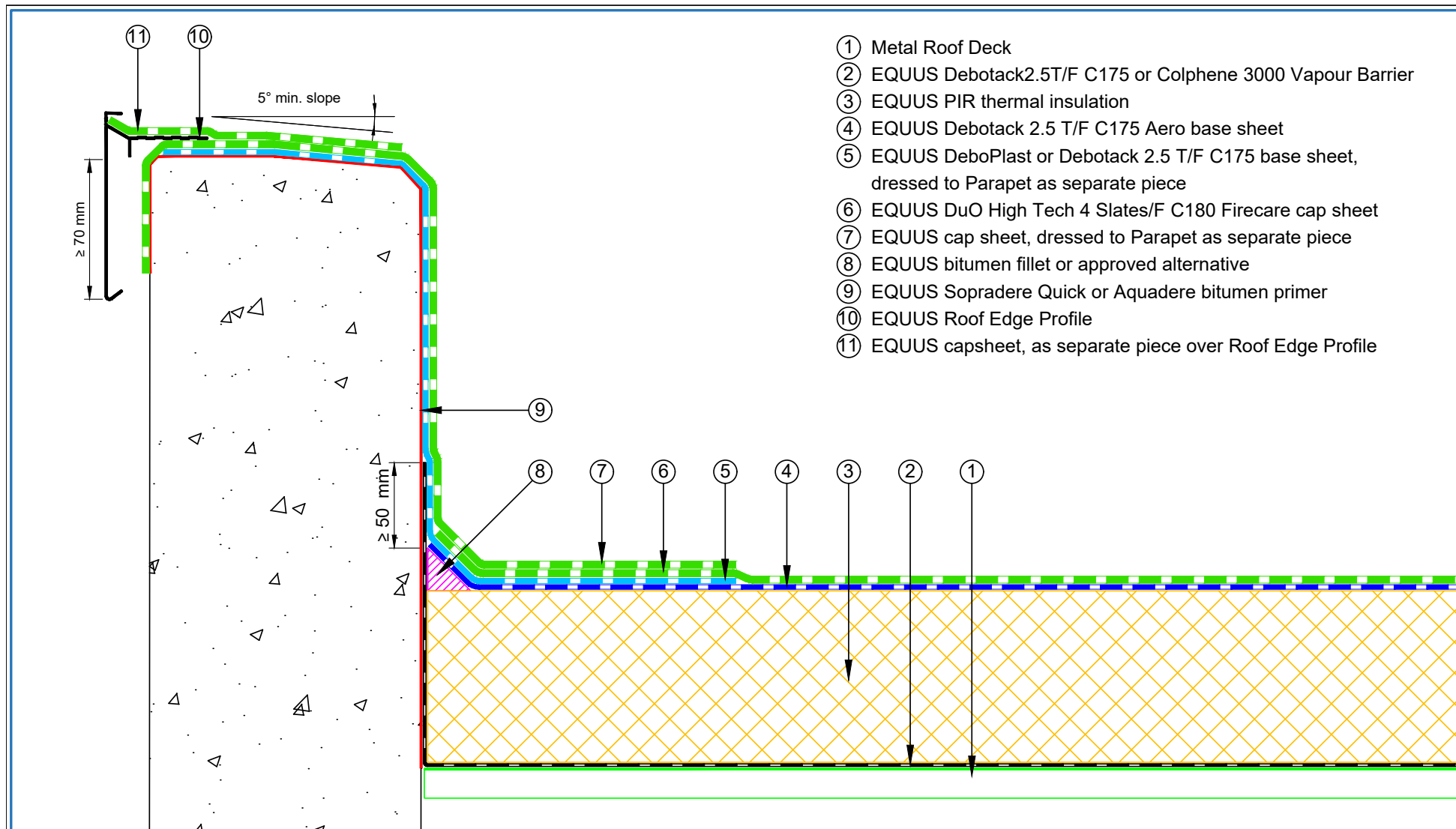


- ① Metal Roof Deck
- ② EQUUS Debotack2.5T/F C175 or Colphene 3000 Vapour Barrier
- ③ EQUUS PIR thermal insulation
- ④ EQUUS Debotack 2.5 T/F C175 Aero base sheet
- ⑤ EQUUS DeboPlast or Debotack 2.5 T/F C175 base sheet, dressed to Parapet as separate piece
- ⑥ EQUUS DuO High Tech 4 Slates/F C180 Firecare cap sheet
- ⑦ EQUUS cap sheet, dressed to Parapet as separate piece
- ⑧ EQUUS bitumen fillet or approved alternative
- ⑨ EQUUS Sopradere Quick or Aquadere bitumen primer
- ⑩ Approved capping (by others)

E-mail : admin@equus.co.nz
Web : www.equus.co.nz

PROJECT :	Warm Roof on Metal Standard Detail - DuO		
TITLE :	Concrete parapet detail with roof cap flashing (PIR insulation)		
NUMBER :	SDWRM-D1a	SCALE :	1 : 3
DRAWN BY :	NKT	DATE :	13-Jan-2022
		REVISED :	
<p><small>Equus Waterproof Membrane Details are specially drawn for use by Local Authorities, Building Contractors, Equus Applicators, Architects and design professionals. All details are drawn to assist in the development of project specific details. Details may be modified where necessary to accommodate job specific requirements but must be approved by Equus Industries Ltd. All components must be supplied by Equus Industries Ltd. Equus reserves the right to alter or upgrade details at any time without prior notice.</small></p>			

AUTHORISED DISTRIBUTOR
SOPREMA



- ① Metal Roof Deck
- ② EQUUS Debotack2.5T/F C175 or Colphene 3000 Vapour Barrier
- ③ EQUUS PIR thermal insulation
- ④ EQUUS Debotack 2.5 T/F C175 Aero base sheet
- ⑤ EQUUS DeboPlast or Debotack 2.5 T/F C175 base sheet, dressed to Parapet as separate piece
- ⑥ EQUUS DuO High Tech 4 Slates/F C180 Firecare cap sheet
- ⑦ EQUUS cap sheet, dressed to Parapet as separate piece
- ⑧ EQUUS bitumen fillet or approved alternative
- ⑨ EQUUS Sopradere Quick or Aquadere bitumen primer
- ⑩ EQUUS Roof Edge Profile
- ⑪ EQUUS capsheet, as separate piece over Roof Edge Profile

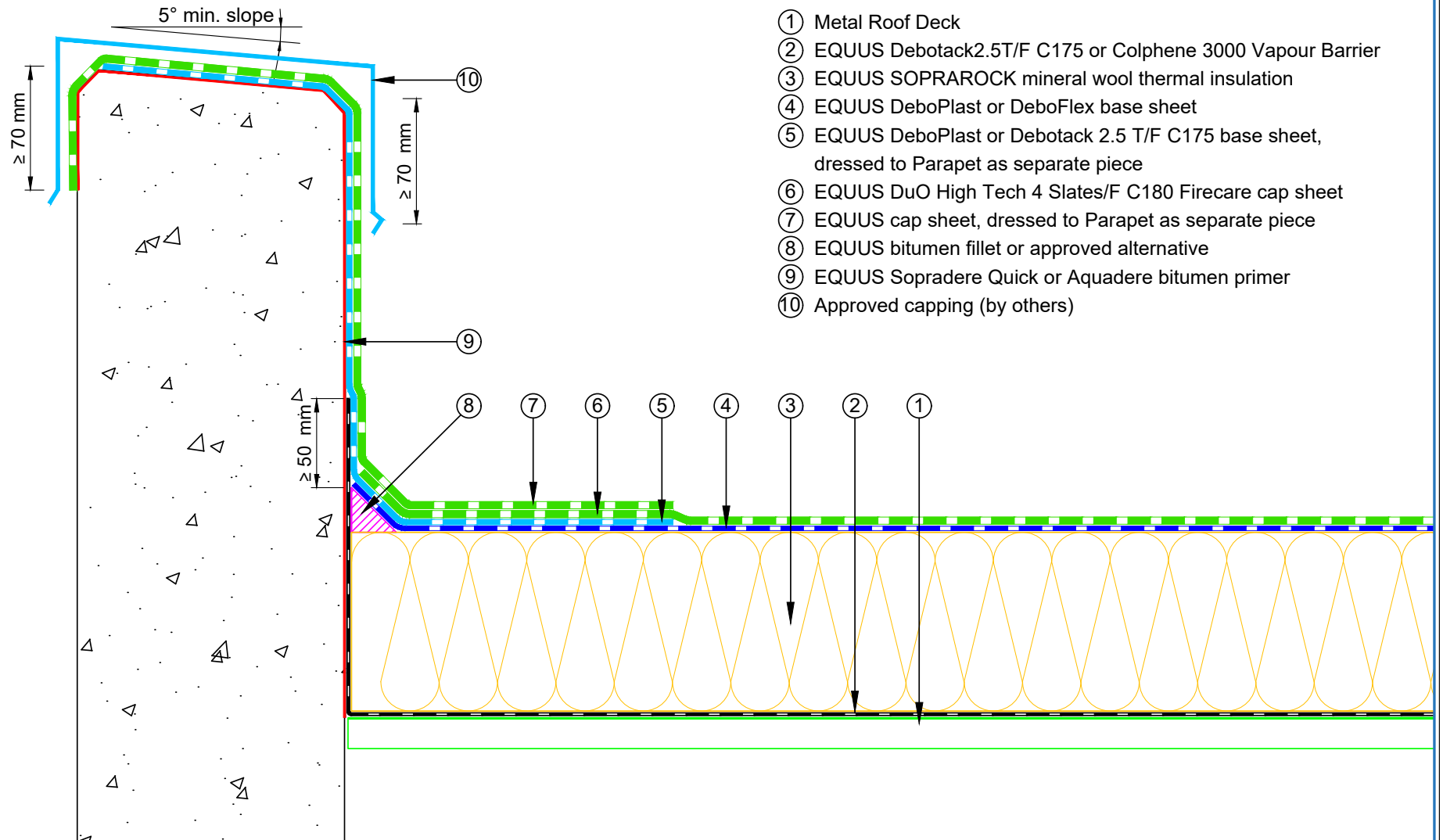


E-mail : admin@equus.co.nz
Web : www.equus.co.nz

PROJECT :	Warm Roof on Metal Standard Detail - DuO		
TITLE :	Concrete parapet detail with roof edge profile (PIR insulation)		
NUMBER :	SDWRM-D1b	SCALE :	1 : 3
DRAWN BY :	NKT	DATE :	14-Jan-2022
		REVISED :	

Equus Waterproof Membrane Details are specially drawn for use by Local Authorities, Building Contractors, Equus Applicators, Architects and design professionals. All details are drawn to assist in the development of project specific details. Details may be modified where necessary to accommodate job specific requirements but must be approved by Equus Industries Ltd. All components must be supplied by Equus Industries Ltd. Equus reserves the right to alter or upgrade details at any time without prior notice.





- ① Metal Roof Deck
- ② EQUUS Debotack 2.5T/F C175 or Colphene 3000 Vapour Barrier
- ③ EQUUS SOPRAROCK mineral wool thermal insulation
- ④ EQUUS DeboPlast or DeboFlex base sheet
- ⑤ EQUUS DeboPlast or Debotack 2.5 T/F C175 base sheet, dressed to Parapet as separate piece
- ⑥ EQUUS DuO High Tech 4 Slates/F C180 Firecare cap sheet
- ⑦ EQUUS cap sheet, dressed to Parapet as separate piece
- ⑧ EQUUS bitumen fillet or approved alternative
- ⑨ EQUUS Sopradere Quick or Aquadere bitumen primer
- ⑩ Approved capping (by others)

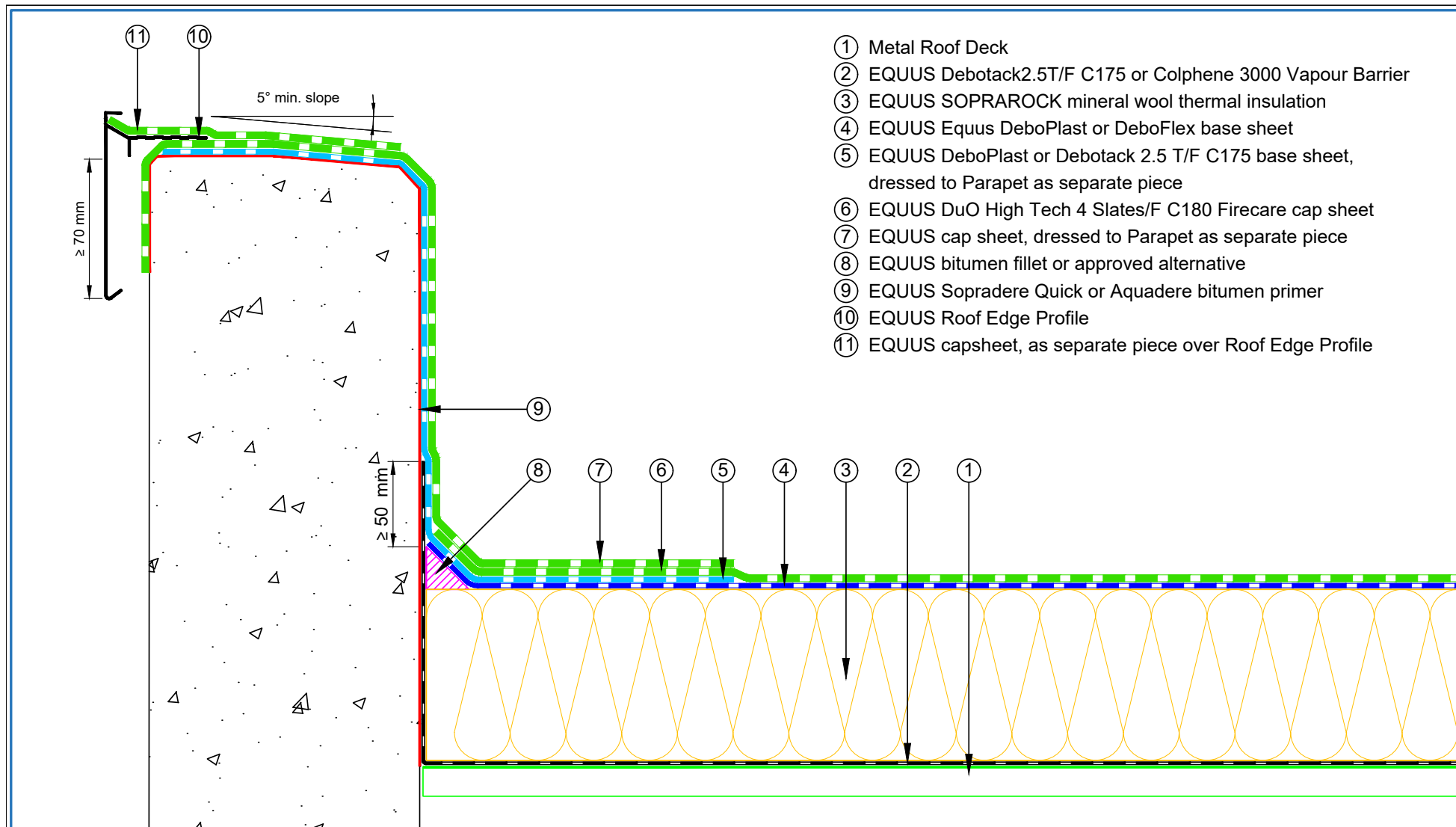


E-mail : admin@equus.co.nz
Web : www.equus.co.nz

PROJECT :	Warm Roof on Metal Standard Detail - DuO		
TITLE :	Concrete parapet detail with roof cap flashing (Mineral wool insulation)		
NUMBER :	SDWRM-D1c	SCALE :	1 : 3
DRAWN BY :	NKT	DATE :	14-Jan-2022
		REVISED :	

Equus Waterproof Membrane Details are specially drawn for use by Local Authorities, Building Contractors, Equus Applicators, Architects and design professionals. All details are drawn to assist in the development of project specific details. Details may be modified where necessary to accommodate job specific requirements but must be approved by Equus Industries Ltd. All components must be supplied by Equus Industries Ltd. Equus reserves the right to alter or upgrade details at any time without prior notice.



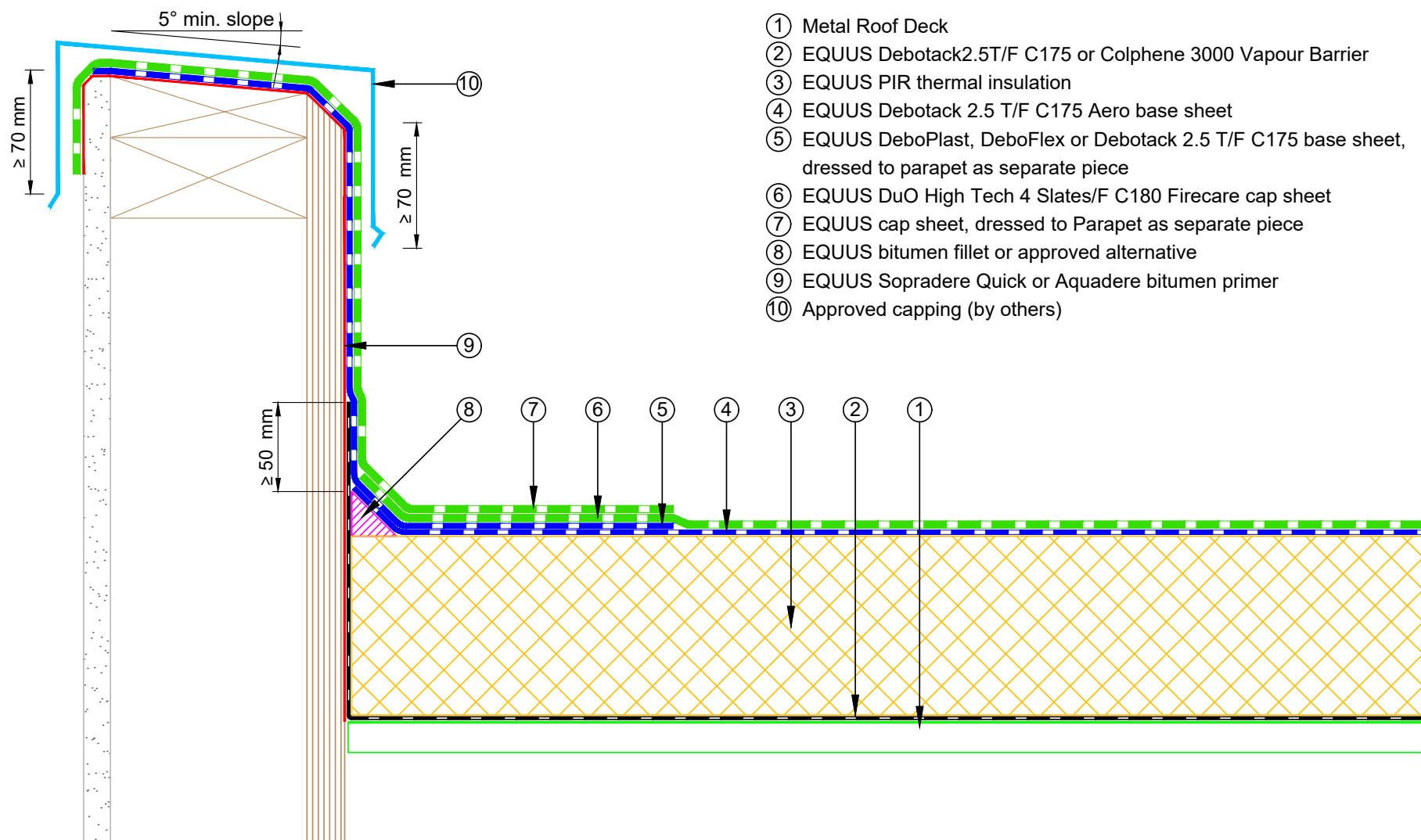


- ① Metal Roof Deck
- ② EQUUS Debotack2.5T/F C175 or Colphene 3000 Vapour Barrier
- ③ EQUUS SOPRAROCK mineral wool thermal insulation
- ④ EQUUS Equus DeboPlast or DeboFlex base sheet
- ⑤ EQUUS DeboPlast or Debotack 2.5 T/F C175 base sheet, dressed to Parapet as separate piece
- ⑥ EQUUS DuO High Tech 4 Slates/F C180 Firecare cap sheet
- ⑦ EQUUS cap sheet, dressed to Parapet as separate piece
- ⑧ EQUUS bitumen fillet or approved alternative
- ⑨ EQUUS Sopradere Quick or Aquadere bitumen primer
- ⑩ EQUUS Roof Edge Profile
- ⑪ EQUUS capsheet, as separate piece over Roof Edge Profile

E-mail : admin@equus.co.nz
Web : www.equus.co.nz

PROJECT :	Warm Roof on Metal Standard Detail - DuO		
TITLE :	Concrete parapet detail with roof cap flashing (Mineral wool insulation)		
NUMBER :	SDWRM-D1d	SCALE :	1 : 3
DRAWN BY :	NKT	DATE :	14-Jan-2022
		REVISED :	
<p>Equus Waterproof Membrane Details are specially drawn for use by Local Authorities, Building Contractors, Equus Applicators, Architects and design professionals. All details are drawn to assist in the development of project specific details. Details may be modified where necessary to accommodate job specific requirements but must be approved by Equus Industries Ltd. All components must be supplied by Equus Industries Ltd. Equus reserves the right to alter or upgrade details at any time without prior notice.</p>			

AUTHORISED DISTRIBUTOR
SOPREMA

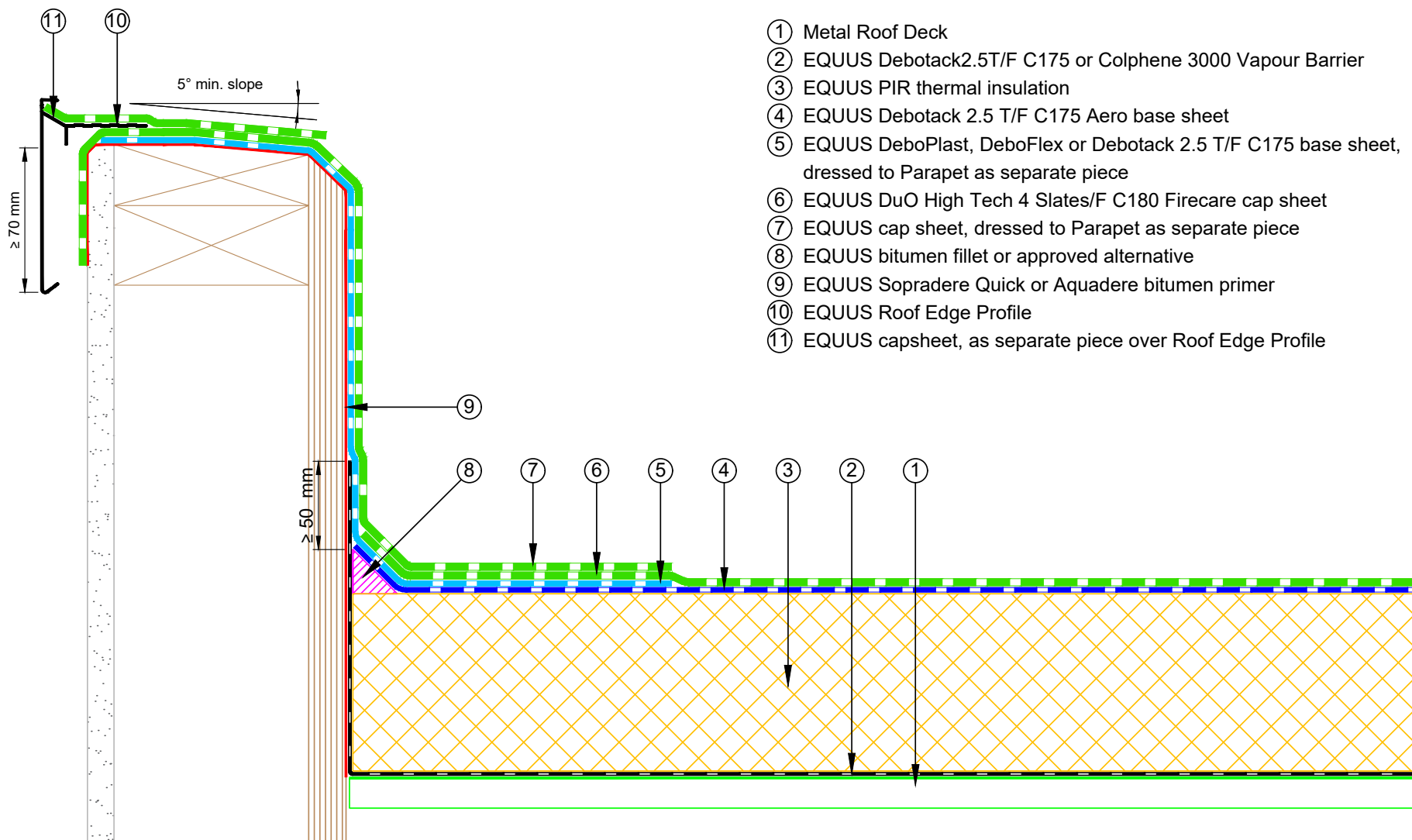


E-mail : admin@equus.co.nz
Web : www.equus.co.nz

PROJECT :	Warm Roof on Metal Standard Detail - DuO		
TITLE :	Plywood parapet detail with roof cap flashing (PIR insulation)		
NUMBER :	SDWRM-D2a	SCALE :	1 : 3
DRAWN BY :	NKT	DATE :	17-Jan-2022
		REVISED :	

Equus Waterproof Membrane Details are specially drawn for use by Local Authorities, Building Contractors, Equus Applicators, Architects and design professionals. All details are drawn to assist in the development of project specific details. Details may be modified where necessary to accommodate job specific requirements but must be approved by Equus Industries Ltd. All components must be supplied by Equus Industries Ltd. Equus reserves the right to alter or upgrade details at any time without prior notice.





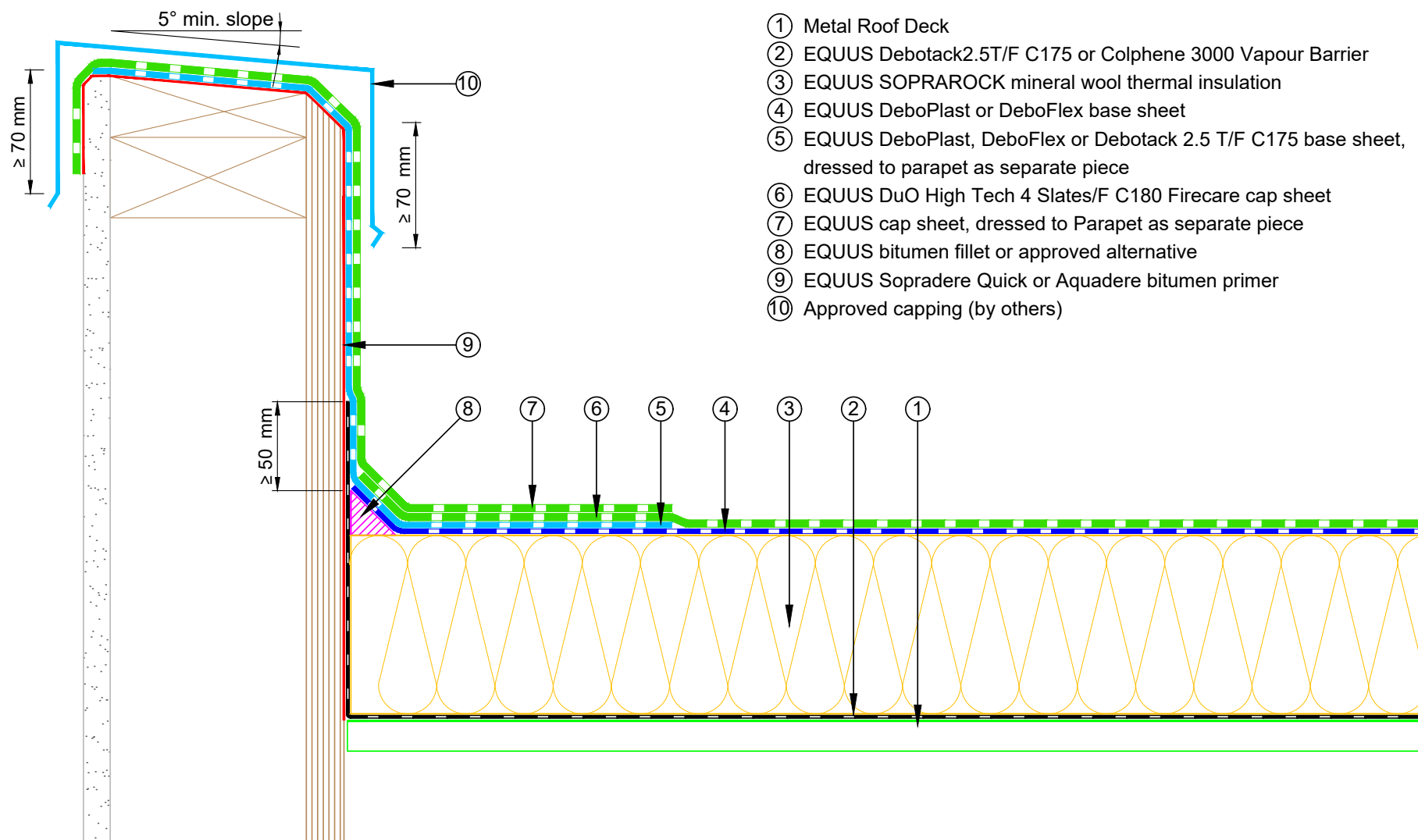
- ① Metal Roof Deck
- ② EQUUS Debotack2.5T/F C175 or Colphene 3000 Vapour Barrier
- ③ EQUUS PIR thermal insulation
- ④ EQUUS Debotack 2.5 T/F C175 Aero base sheet
- ⑤ EQUUS DeboPlast, DeboFlex or Debotack 2.5 T/F C175 base sheet, dressed to Parapet as separate piece
- ⑥ EQUUS DuO High Tech 4 Slates/F C180 Firecare cap sheet
- ⑦ EQUUS cap sheet, dressed to Parapet as separate piece
- ⑧ EQUUS bitumen fillet or approved alternative
- ⑨ EQUUS Soprudere Quick or Aquadere bitumen primer
- ⑩ EQUUS Roof Edge Profile
- ⑪ EQUUS capsheet, as separate piece over Roof Edge Profile



E-mail : admin@equus.co.nz
Web : www.equus.co.nz

PROJECT :	Warm Roof on Metal Standard Detail - DuO		
TITLE :	Plywood parapet detail with roof edge profile (PIR insulation)		
NUMBER :	SDWRM-D2b	SCALE :	1 : 3
DRAWN BY :	NKT	DATE :	18-Jan-2022
		REVISED :	
<p>Equus Waterproof Membrane Details are specially drawn for use by Local Authorities, Building Contractors, Equus Applicators, Architects and design professionals. All details are drawn to assist in the development of project specific details. Details may be modified where necessary to accommodate job specific requirements but must be approved by Equus Industries Ltd. All components must be supplied by Equus Industries Ltd. Equus reserves the right to alter or upgrade details at any time without prior notice.</p>			

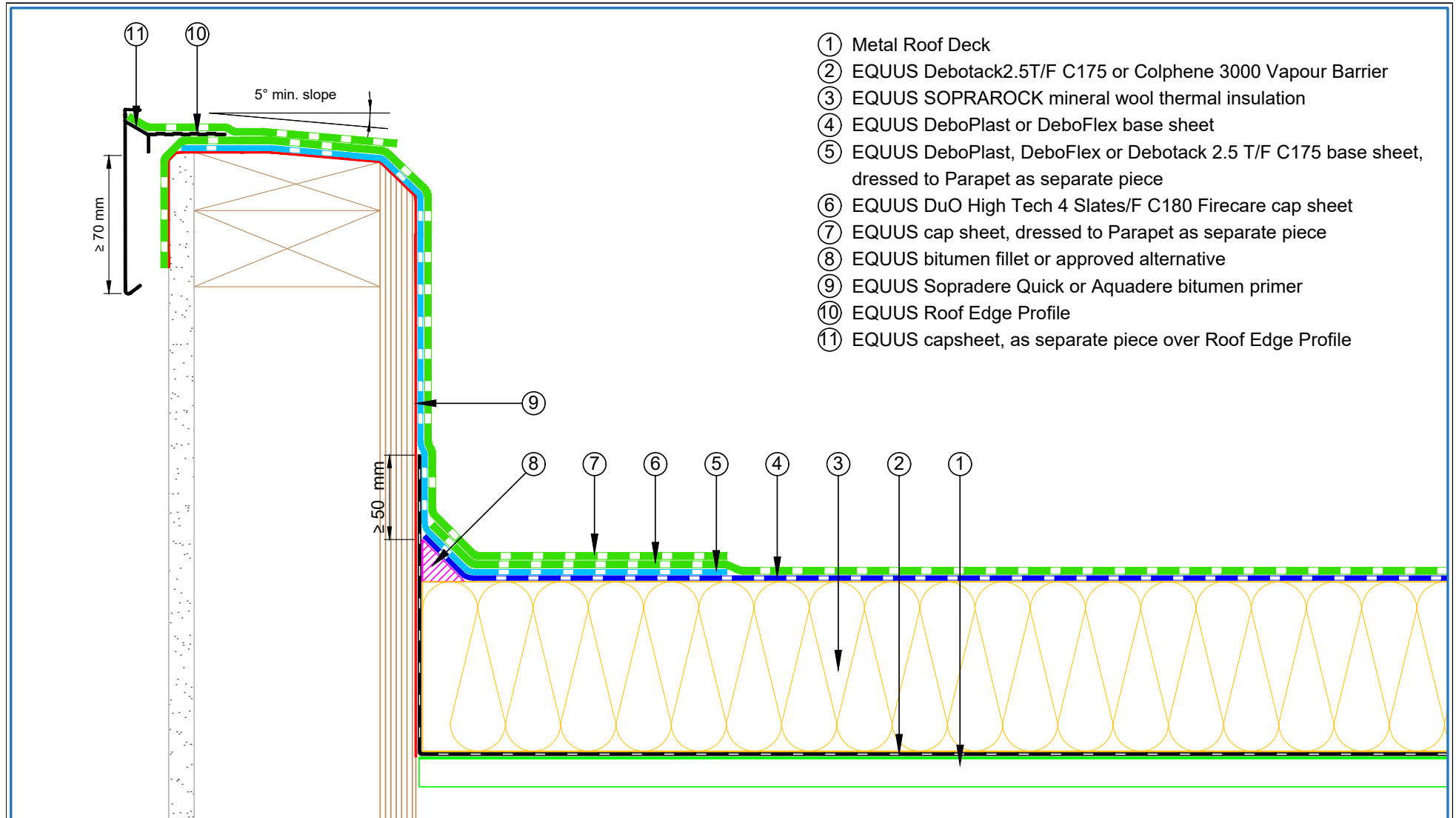




E-mail : admin@equus.co.nz
Web : www.equus.co.nz

PROJECT :	Warm Roof on Metal Standard Detail - DuO		
TITLE :	Plywood parapet detail with roof cap flashing (Mineral insulation)		
NUMBER :	SDWRM-D2c	SCALE :	1 : 3
DRAWN BY :	NKT	DATE :	17-Jan-2022
		REVISED :	
<p><small>Equus Waterproof Membrane Details are specially drawn for use by Local Authorities, Building Contractors, Equus Applicators, Architects and design professionals. All details are drawn to assist in the development of project specific details. Details may be modified where necessary to accommodate job specific requirements but must be approved by Equus Industries Ltd. All components must be supplied by Equus Industries Ltd. Equus reserves the right to alter or upgrade details at any time without prior notice.</small></p>			





- ① Metal Roof Deck
- ② EQUUS Debotack 2.5 T/F C175 or Colphene 3000 Vapour Barrier
- ③ EQUUS SOPRAROCK mineral wool thermal insulation
- ④ EQUUS DeboPlast or DeboFlex base sheet
- ⑤ EQUUS DeboPlast, DeboFlex or Debotack 2.5 T/F C175 base sheet, dressed to Parapet as separate piece
- ⑥ EQUUS DuO High Tech 4 Slates/F C180 Firecare cap sheet
- ⑦ EQUUS cap sheet, dressed to Parapet as separate piece
- ⑧ EQUUS bitumen fillet or approved alternative
- ⑨ EQUUS Soprudere Quick or Aquadere bitumen primer
- ⑩ EQUUS Roof Edge Profile
- ⑪ EQUUS capsheet, as separate piece over Roof Edge Profile

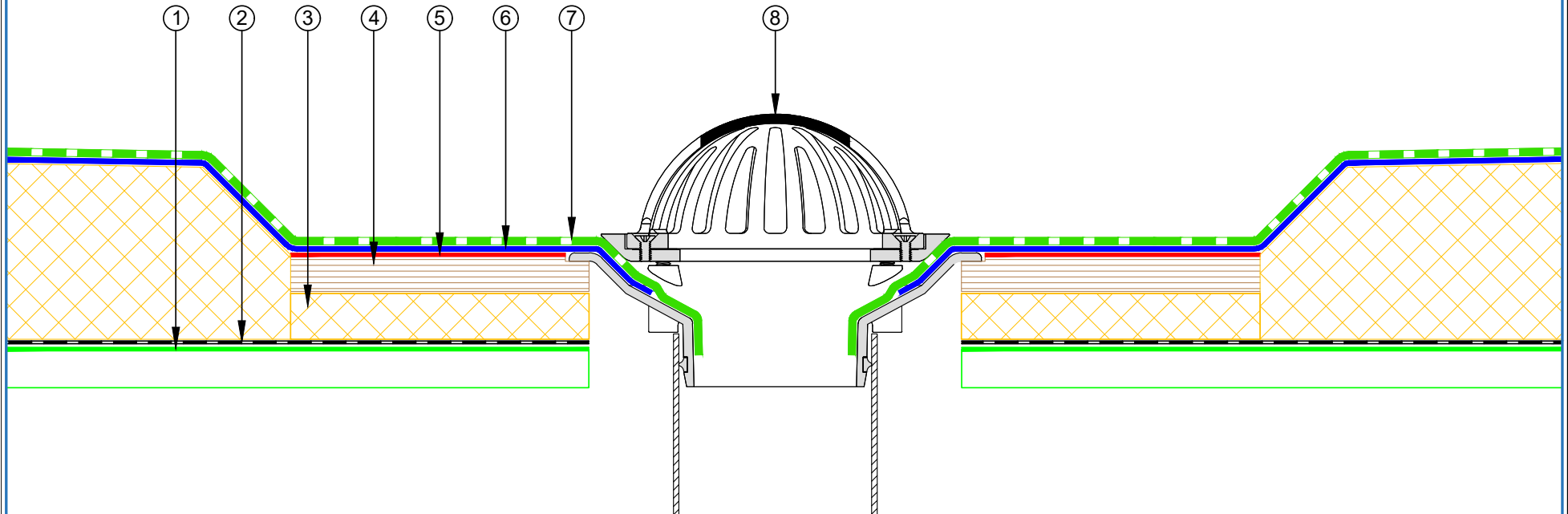


E-mail : admin@equus.co.nz
Web : www.equus.co.nz

PROJECT :	Warm Roof on Metal Standard Detail - DuO		
TITLE :	Plywood parapet detail with roof edge profile (Mineral wool insulation)		
NUMBER :	SDWRM-D2d	SCALE :	1 : 3
DRAWN BY :	NKT	DATE :	18-Jan-2022
<p>Equus Waterproof Membrane Details are specially drawn for use by Local Authorities, Building Contractors, Equus Applicators, Architects and design professionals. All details are drawn to assist in the development of project specific details. Details may be modified where necessary to accommodate job specific requirements but must be approved by Equus Industries Ltd. All components must be supplied by Equus Industries Ltd. Equus reserves the right to alter or upgrade details at any time without prior notice.</p>			



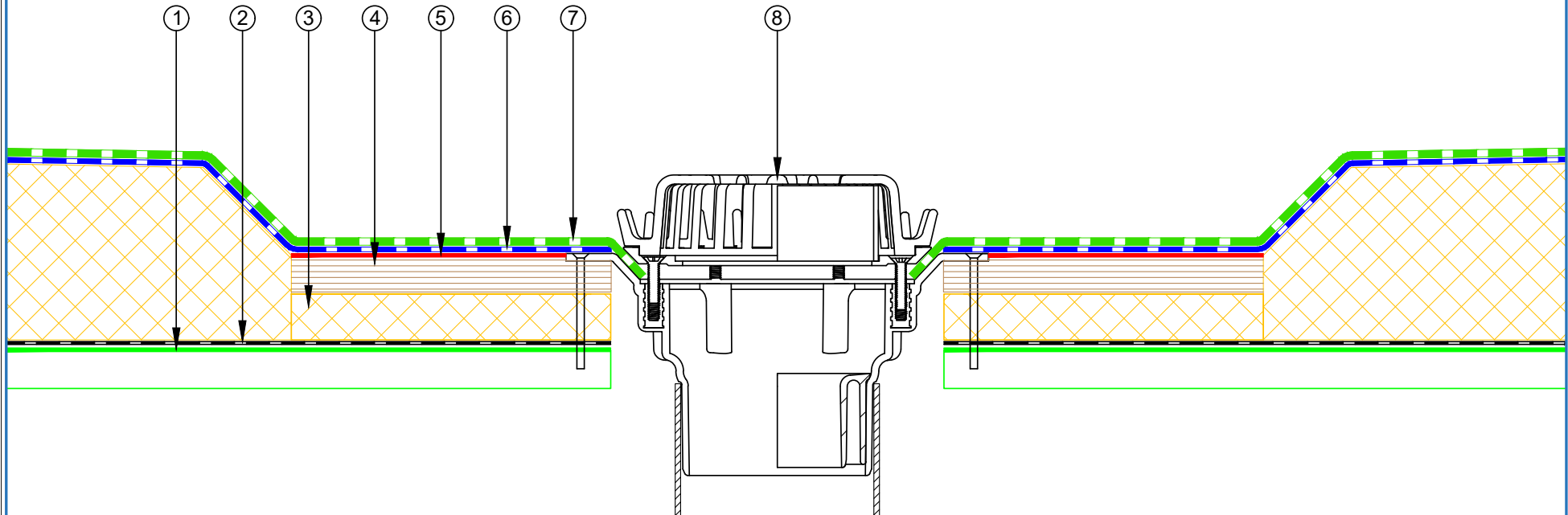
- ① Metal Roof Deck
- ② EQUUS Debotack2.5T/F C175 or Colphene 3000 Vapour Barrier
- ③ EQUUS PIR thermal insulation
- ④ Plywood
- ⑤ Sopradere Quick or Aquadere bitumen primer
- ⑥ EQUUS Debotack 2.5 T/F C175 Aero base sheet
- ⑦ EQUUS DuO High Tech 4 Slates/F C180 Firecare cap sheet
- ⑧ Allproof dome clamp ring drain



PROJECT :	Warm Roof on Metal Standard Detail - DuO		
TITLE :	Allproof dome clamp ring drain		
NUMBER :	SDWRM-D3a	SCALE :	1 : 3
DRAWN BY :	NKT	DATE :	19-Jan-2022
		REVISED :	
<p><small>Equus Waterproof Membrane Details are specially drawn for use by Local Authorities, Building Contractors, Equus Applicators, Architects and design professionals. All details are drawn to assist in the development of project specific details. Details may be modified where necessary to accommodate job specific requirements but must be approved by Equus Industries Ltd. All components must be supplied by Equus Industries Ltd. Equus reserves the right to alter or upgrade details at any time without prior notice.</small></p>			



- ① Metal Roof Deck
- ② EQUUS Debotack2.5T/F C175 or Colphene 3000 Vapour Barrier
- ③ EQUUS PIR thermal insulation
- ④ Plywood
- ⑤ Sopradere Quick or Aquadere bitumen primer
- ⑥ EQUUS Debotack 2.5 T/F C175 Aero base sheet
- ⑦ EQUUS DuO High Tech 4 Slates/F C180 Firecare cap sheet
- ⑧ Aquaknight HiFlow roof drain

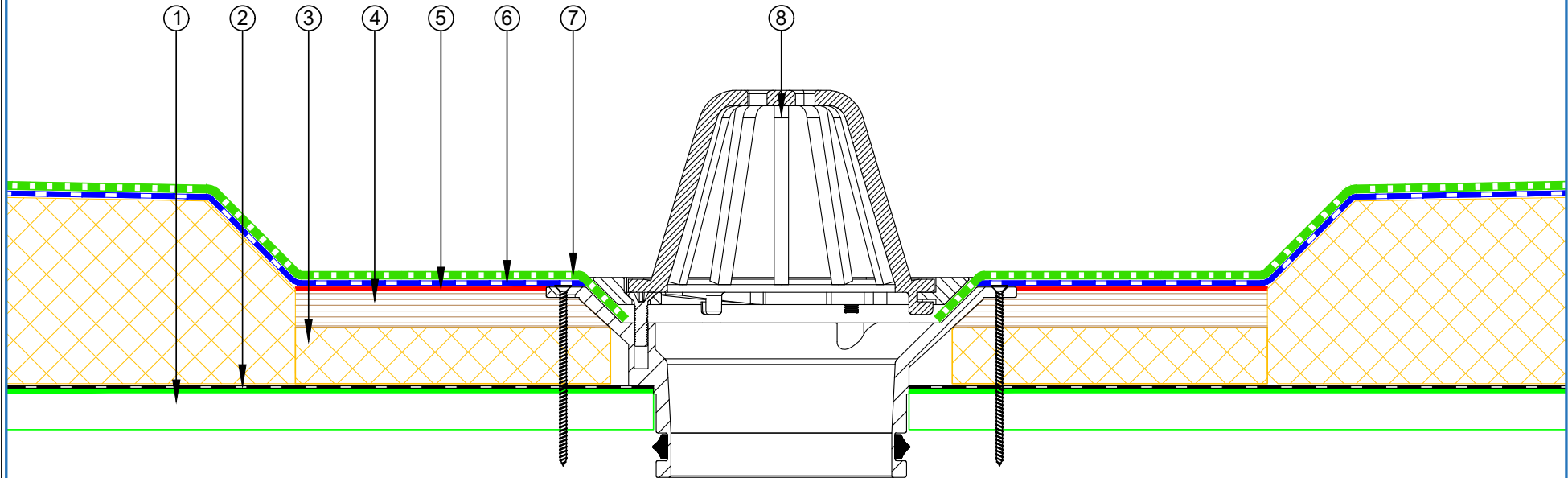


E-mail : admin@equus.co.nz
Web : www.equus.co.nz

PROJECT :	Warm Roof on Metal Standard Detail - DuO		
TITLE :	Aquaknight HiFlow roof drain		
NUMBER :	SDWRM-D3b	SCALE :	1 : 3
DRAWN BY :	NKT	DATE :	19-Jan-2022
		REVISED :	
<p><small>Equus Waterproof Membrane Details are specially drawn for use by Local Authorities, Building Contractors, Equus Applicators, Architects and design professionals. All details are drawn to assist in the development of project specific details. Details may be modified where necessary to accommodate job specific requirements but must be approved by Equus Industries Ltd. All components must be supplied by Equus Industries Ltd. Equus reserves the right to alter or upgrade details at any time without prior notice.</small></p>			



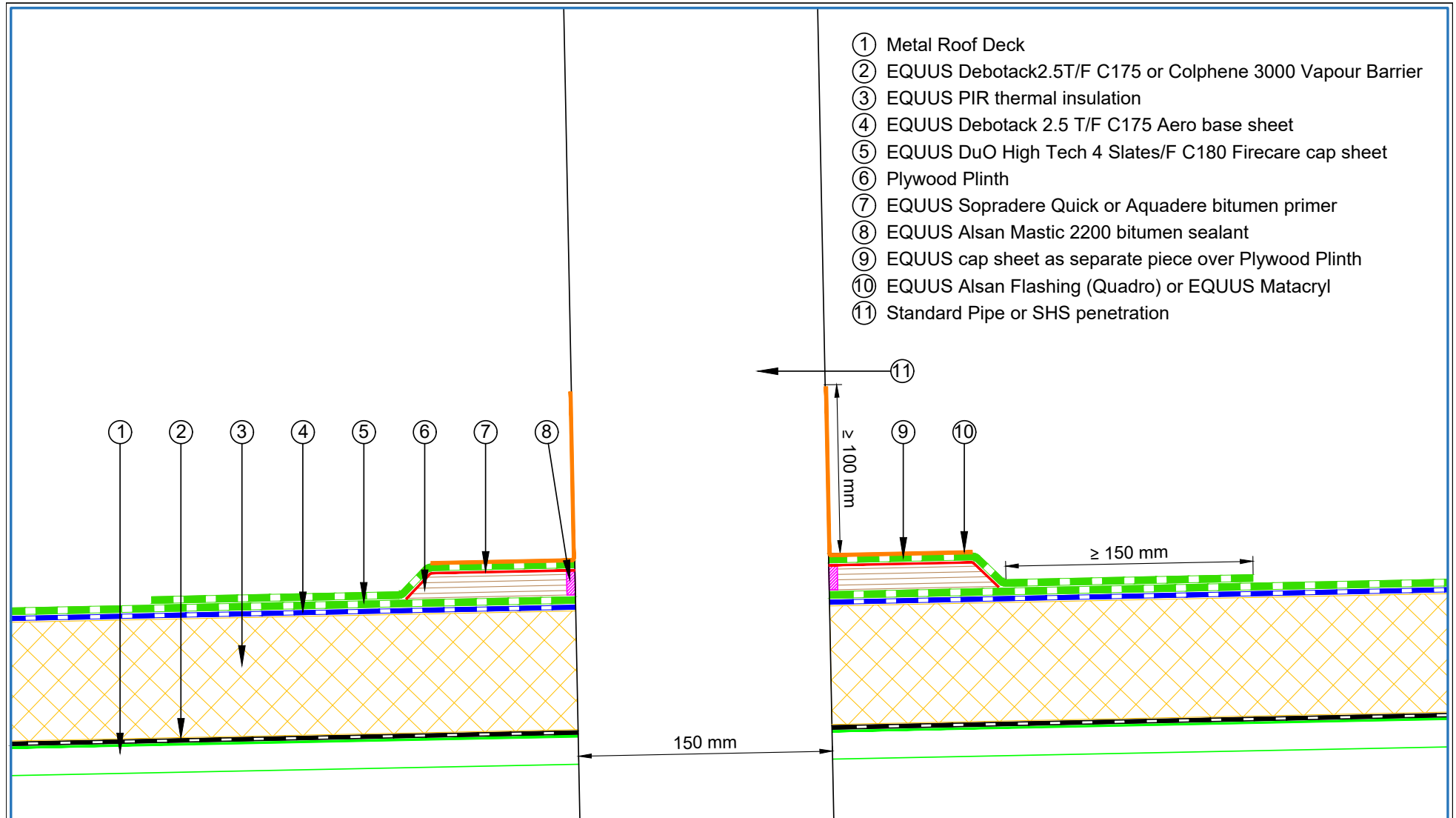
- ① Metal Roof Deck
- ② EQUUS Debotack2.5T/F C175 or Colphene 3000 Vapour Barrier
- ③ EQUUS PIR thermal insulation
- ④ Plywood
- ⑤ Sopradere Quick or Aquadere bitumen primer
- ⑥ EQUUS Debotack 2.5 T/F C175 Aero base sheet
- ⑦ EQUUS DuO High Tech 4 Slates/F C180 Firecare cap sheet
- ⑧ Allproof dome clamp ring drain 168.80DCR



E-mail : admin@equus.co.nz
Web : www.equus.co.nz

PROJECT :	Warm Roof on Metal Standard Detail - DuO		
TITLE :	Allproof dome clamp ring drain 168.80DCR		
NUMBER :	SDWRM-D3c	SCALE :	NTS
DRAWN BY :	NKT	DATE :	6-Apr-2022
		REVISED :	
<p><small>Equus Waterproof Membrane Details are specially drawn for use by Local Authorities, Building Contractors, Equus Applicators, Architects and design professionals. All details are drawn to assist in the development of project specific details. Details may be modified where necessary to accommodate job specific requirements but must be approved by Equus Industries Ltd. All components must be supplied by Equus Industries Ltd. Equus reserves the right to alter or upgrade details at any time without prior notice.</small></p>			





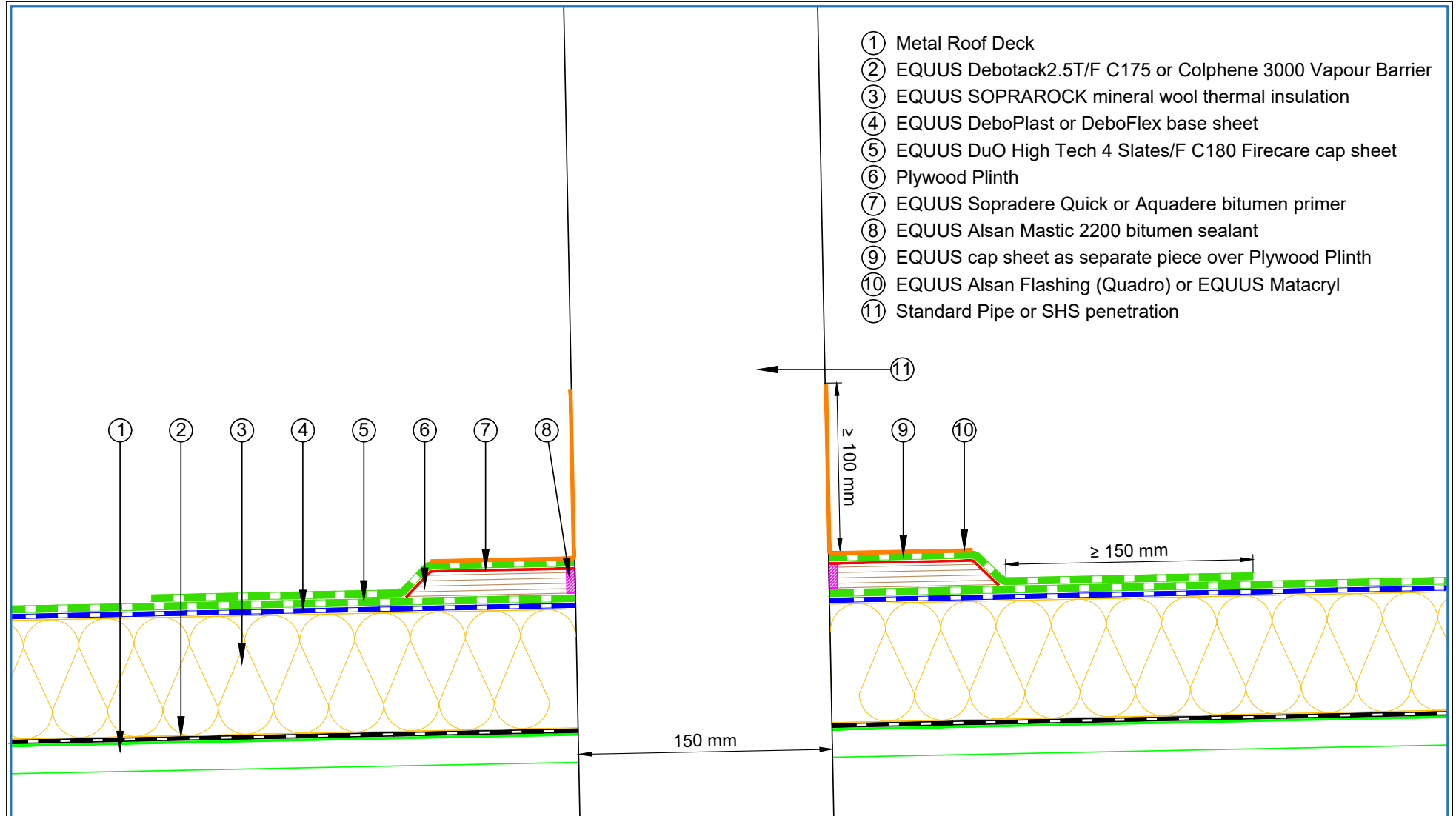
- ① Metal Roof Deck
- ② EQUUS Debotack2.5T/F C175 or Colphene 3000 Vapour Barrier
- ③ EQUUS PIR thermal insulation
- ④ EQUUS Debotack 2.5 T/F C175 Aero base sheet
- ⑤ EQUUS DuO High Tech 4 Slates/F C180 Firecare cap sheet
- ⑥ Plywood Plinth
- ⑦ EQUUS Sopradere Quick or Aquadere bitumen primer
- ⑧ EQUUS Alsan Mastic 2200 bitumen sealant
- ⑨ EQUUS cap sheet as separate piece over Plywood Plinth
- ⑩ EQUUS Alsan Flashing (Quadro) or EQUUS Matacyl
- ⑪ Standard Pipe or SHS penetration

E-mail : admin@equus.co.nz
Web : www.equus.co.nz

PROJECT :	Warm Roof on Metal Standard Detail - DuO		
TITLE :	Standard Pipe or SHS penetration (PIR insulation)		
NUMBER :	SDWRM-D5a	SCALE :	1 : 3
DRAWN BY :	NKT	DATE :	20-Jan-2022
REVISED :			

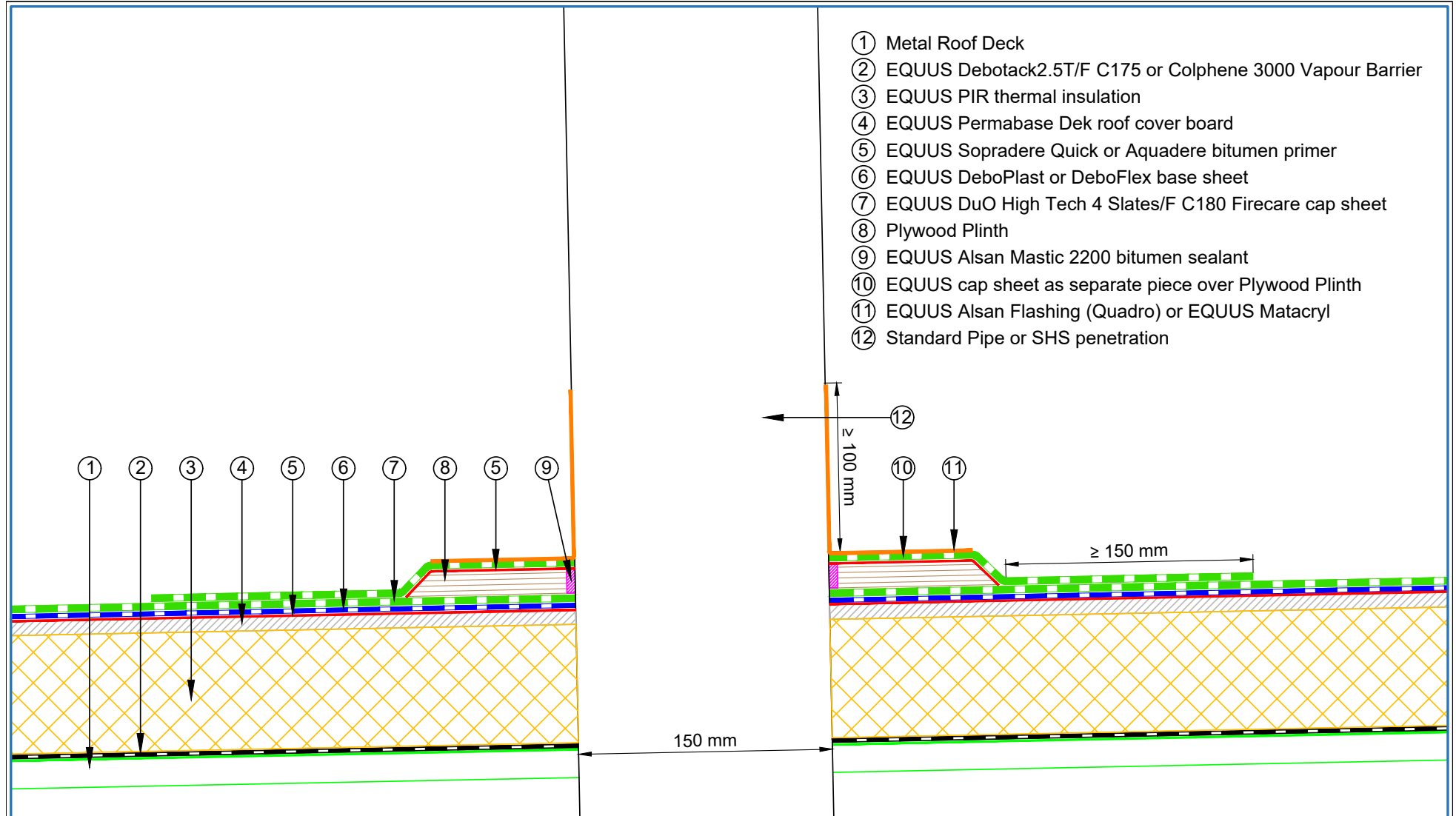
Equus Waterproof Membrane Details are specially drawn for use by Local Authorities, Building Contractors, Equus Applicators, Architects and design professionals. All details are drawn to assist in the development of project specific details. Details may be modified where necessary to accommodate job specific requirements but must be approved by Equus Industries Ltd. All components must be supplied by Equus Industries Ltd. Equus reserves the right to alter or upgrade details at any time without prior notice.

AUTHORISED DISTRIBUTOR
SOPREMA



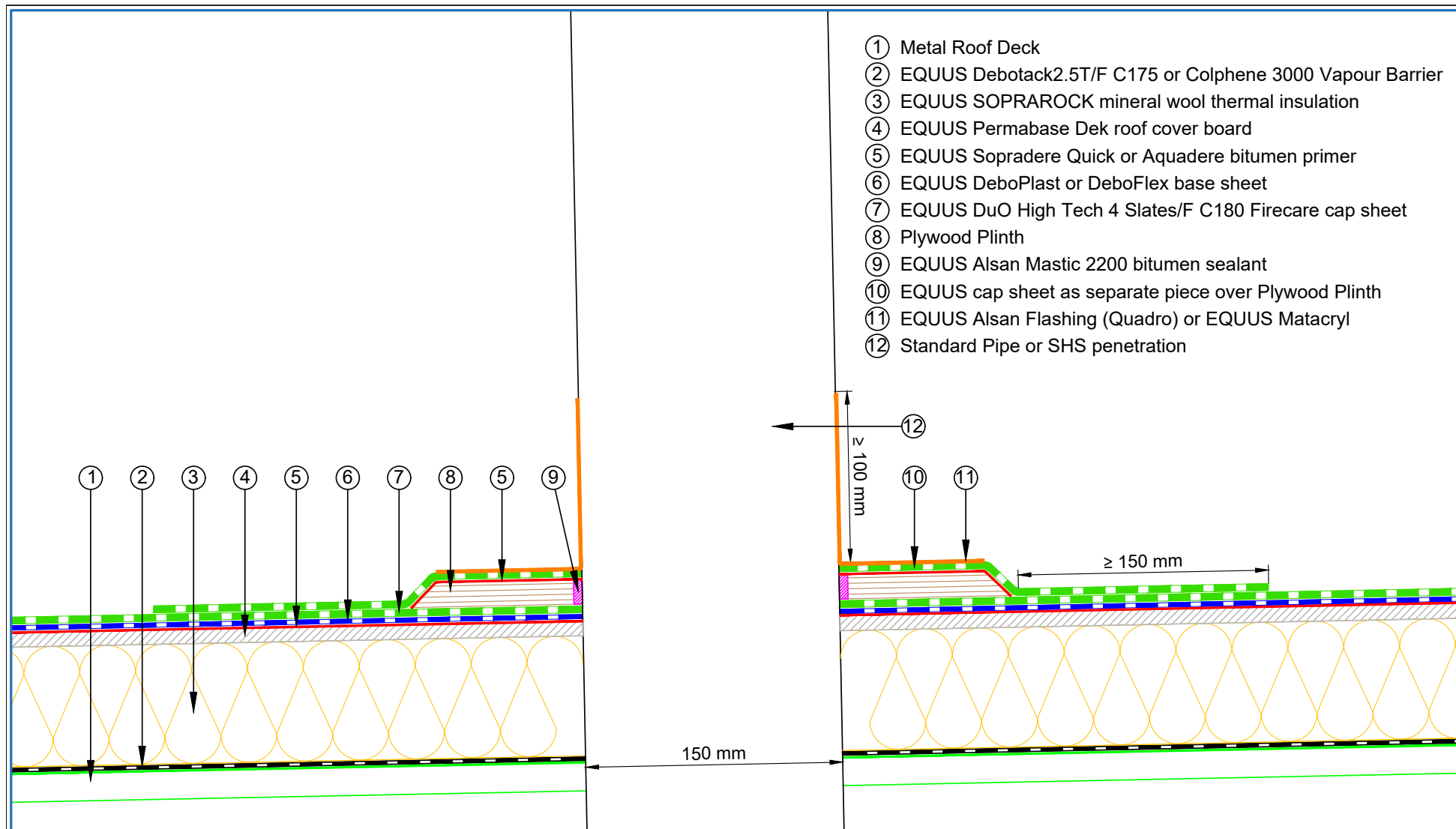
- ① Metal Roof Deck
- ② EQUUS Debotack2.5T/F C175 or Colphene 3000 Vapour Barrier
- ③ EQUUS SOPRAROCK mineral wool thermal insulation
- ④ EQUUS DeboPlast or DeboFlex base sheet
- ⑤ EQUUS DuO High Tech 4 Slates/F C180 Firecare cap sheet
- ⑥ Plywood Plinth
- ⑦ EQUUS Sopradere Quick or Aquadere bitumen primer
- ⑧ EQUUS Alsan Mastic 2200 bitumen sealant
- ⑨ EQUUS cap sheet as separate piece over Plywood Plinth
- ⑩ EQUUS Alsan Flashing (Quadro) or EQUUS Matacryl
- ⑪ Standard Pipe or SHS penetration

 E-mail : admin@equus.co.nz Web : www.equus.co.nz	PROJECT :		Warm Roof on Metal Standard Detail - DuO	
	TITLE :		Standard Pipe or SHS penetration (Mineral wool insulation)	
	NUMBER :	SDWRM-D5b	SCALE :	1 : 3
	DRAWN BY :	NKT	DATE :	20-Jan-2022
	REVISD :			
Equus Waterproof Membrane Details are specially drawn for use by Local Authorities, Building Contractors, Equus Applicators, Architects and design professionals. All details are drawn to assist in the development of project specific details. Details may be modified where necessary to accommodate job specific requirements but must be approved by Equus Industries Ltd. All components must be supplied by Equus Industries Ltd. Equus reserves the right to alter or upgrade details at any time without prior notice.				



- ① Metal Roof Deck
- ② EQUUS Debotack2.5T/F C175 or Colphene 3000 Vapour Barrier
- ③ EQUUS PIR thermal insulation
- ④ EQUUS Permabase Dek roof cover board
- ⑤ EQUUS Sopradere Quick or Aquadere bitumen primer
- ⑥ EQUUS DeboPlast or DeboFlex base sheet
- ⑦ EQUUS DuO High Tech 4 Slates/F C180 Firecare cap sheet
- ⑧ Plywood Plinth
- ⑨ EQUUS Alsan Mastic 2200 bitumen sealant
- ⑩ EQUUS cap sheet as separate piece over Plywood Plinth
- ⑪ EQUUS Alsan Flashing (Quadro) or EQUUS Matacyl
- ⑫ Standard Pipe or SHS penetration

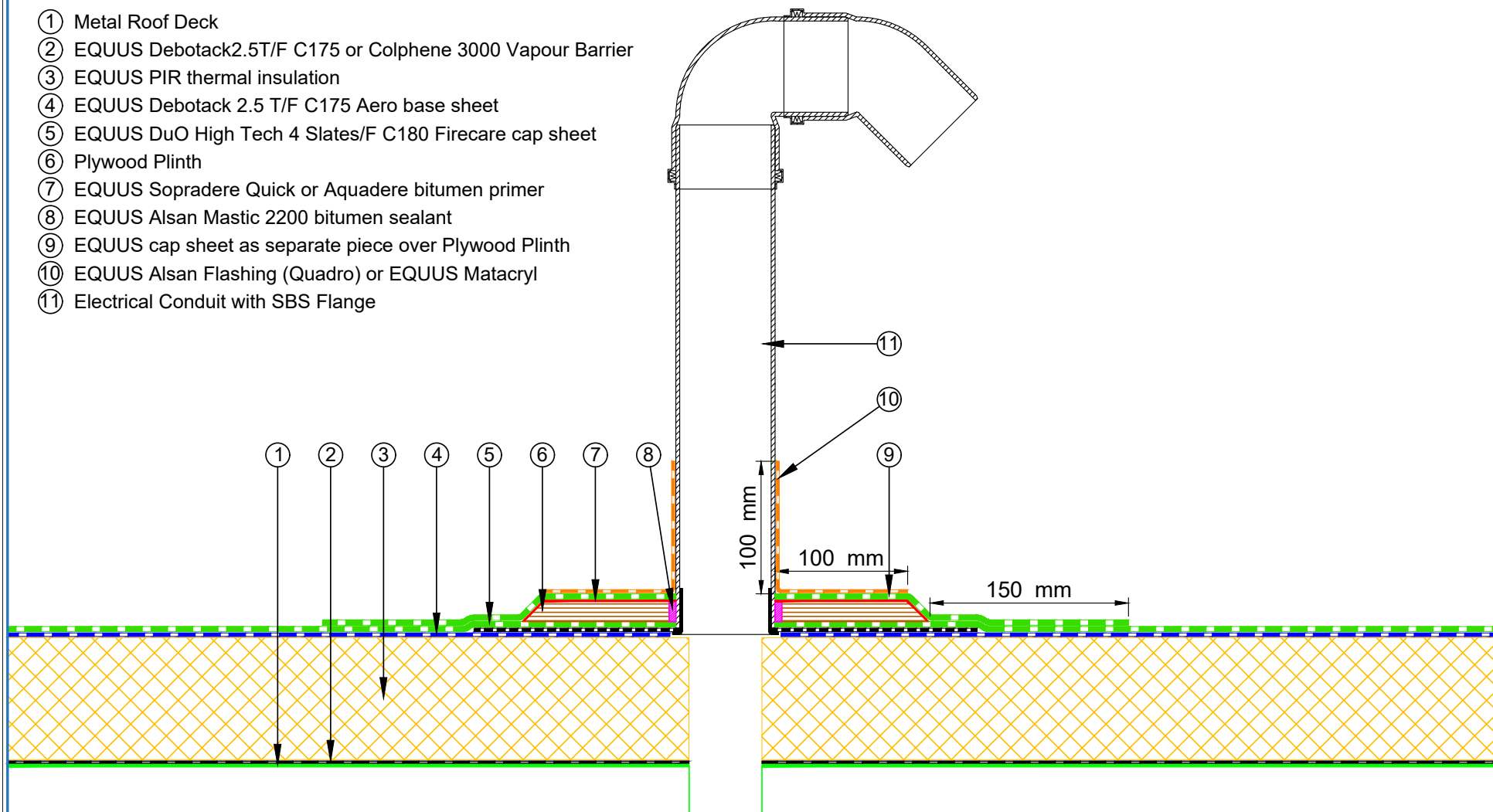
 E-mail : admin@equus.co.nz Web : www.equus.co.nz	PROJECT :		Warm Roof on Metal Standard Detail - DuO	
	TITLE :		Standard Pipe or SHS penetration with cover board (PIR insulation)	
	NUMBER :	SDWRM-D5c	SCALE :	1 : 3
	DRAWN BY :	NKT	DATE :	20-Jan-2022
			REVISED :	
<p><small>Equus Waterproof Membrane Details are specially drawn for use by Local Authorities, Building Contractors, Equus Applicators, Architects and design professionals. All details are drawn to assist in the development of project specific details. Details may be modified where necessary to accommodate job specific requirements but must be approved by Equus Industries Ltd. All components must be supplied by Equus Industries Ltd. Equus reserves the right to alter or upgrade details at any time without prior notice.</small></p>				



- ① Metal Roof Deck
- ② EQUUS Debotack2.5T/F C175 or Colphene 3000 Vapour Barrier
- ③ EQUUS SOPRAROCK mineral wool thermal insulation
- ④ EQUUS Permabase Dek roof cover board
- ⑤ EQUUS Sopradere Quick or Aquadere bitumen primer
- ⑥ EQUUS DeboPlast or DeboFlex base sheet
- ⑦ EQUUS DuO High Tech 4 Slates/F C180 Firecare cap sheet
- ⑧ Plywood Plinth
- ⑨ EQUUS Alsan Mastic 2200 bitumen sealant
- ⑩ EQUUS cap sheet as separate piece over Plywood Plinth
- ⑪ EQUUS Alsan Flashing (Quadro) or EQUUS Matacryl
- ⑫ Standard Pipe or SHS penetration

 E-mail : admin@equus.co.nz Web : www.equus.co.nz	PROJECT :		Warm Roof on Metal Standard Detail - DuO	
	TITLE :		Standard Pipe or SHS penetration with cover board (Mineral wool insulation)	
	NUMBER :	SDWRM-D5d	SCALE :	1 : 3
	DRAWN BY :	NKT	DATE :	20-Jan-2022
			REVISED :	
<p>Equus Waterproof Membrane Details are specially drawn for use by Local Authorities, Building Contractors, Equus Applicators, Architects and design professionals. All details are drawn to assist in the development of project specific details. Details may be modified where necessary to accommodate job specific requirements but must be approved by Equus Industries Ltd. All components must be supplied by Equus Industries Ltd. Equus reserves the right to alter or upgrade details at any time without prior notice.</p>				
			AUTHORIZED DISTRIBUTOR SOPREMA	

- ① Metal Roof Deck
- ② EQUUS Debotack2.5T/F C175 or Colphene 3000 Vapour Barrier
- ③ EQUUS PIR thermal insulation
- ④ EQUUS Debotack 2.5 T/F C175 Aero base sheet
- ⑤ EQUUS DuO High Tech 4 Slates/F C180 Firecare cap sheet
- ⑥ Plywood Plinth
- ⑦ EQUUS Sopradere Quick or Aquadere bitumen primer
- ⑧ EQUUS Alsan Mastic 2200 bitumen sealant
- ⑨ EQUUS cap sheet as separate piece over Plywood Plinth
- ⑩ EQUUS Alsan Flashing (Quadro) or EQUUS Matacyl
- ⑪ Electrical Conduit with SBS Flange



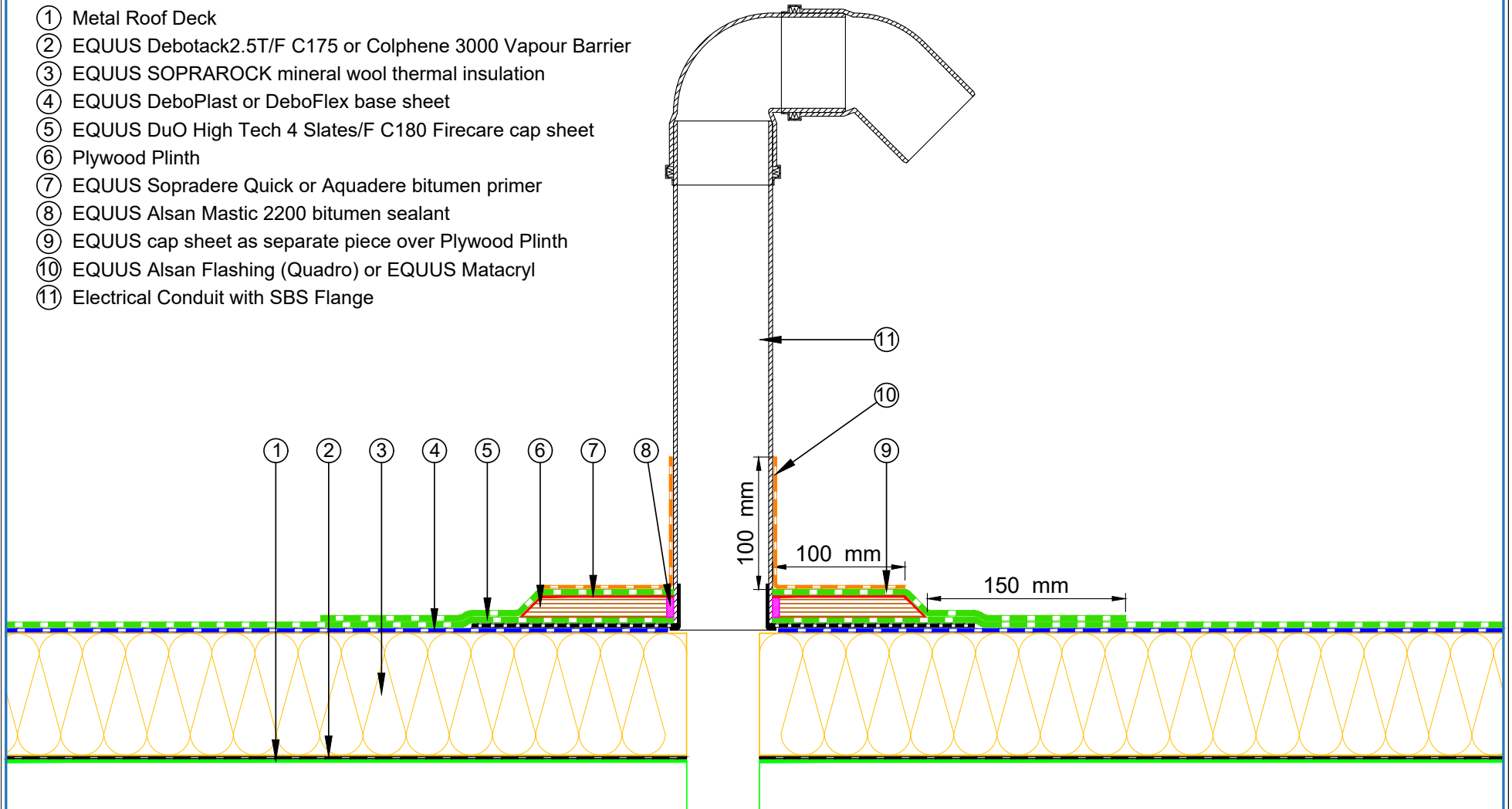
E-mail : admin@equus.co.nz
Web : www.equus.co.nz

PROJECT :	Warm Roof on Metal Standard Detail - DuO		
TITLE :	Electrical conduit (PIR insulation)		
NUMBER :	SDWRM-D6a	SCALE :	1 : 4
DRAWN BY :	NKT	DATE :	22-Jan-2022
		REVISED :	

Equus Waterproof Membrane Details are specially drawn for use by Local Authorities, Building Contractors, Equus Applicators, Architects and design professionals. All details are drawn to assist in the development of project specific details. Details may be modified where necessary to accommodate job specific requirements but must be approved by Equus Industries Ltd. All components must be supplied by Equus Industries Ltd. Equus reserves the right to alter or upgrade details at any time without prior notice.



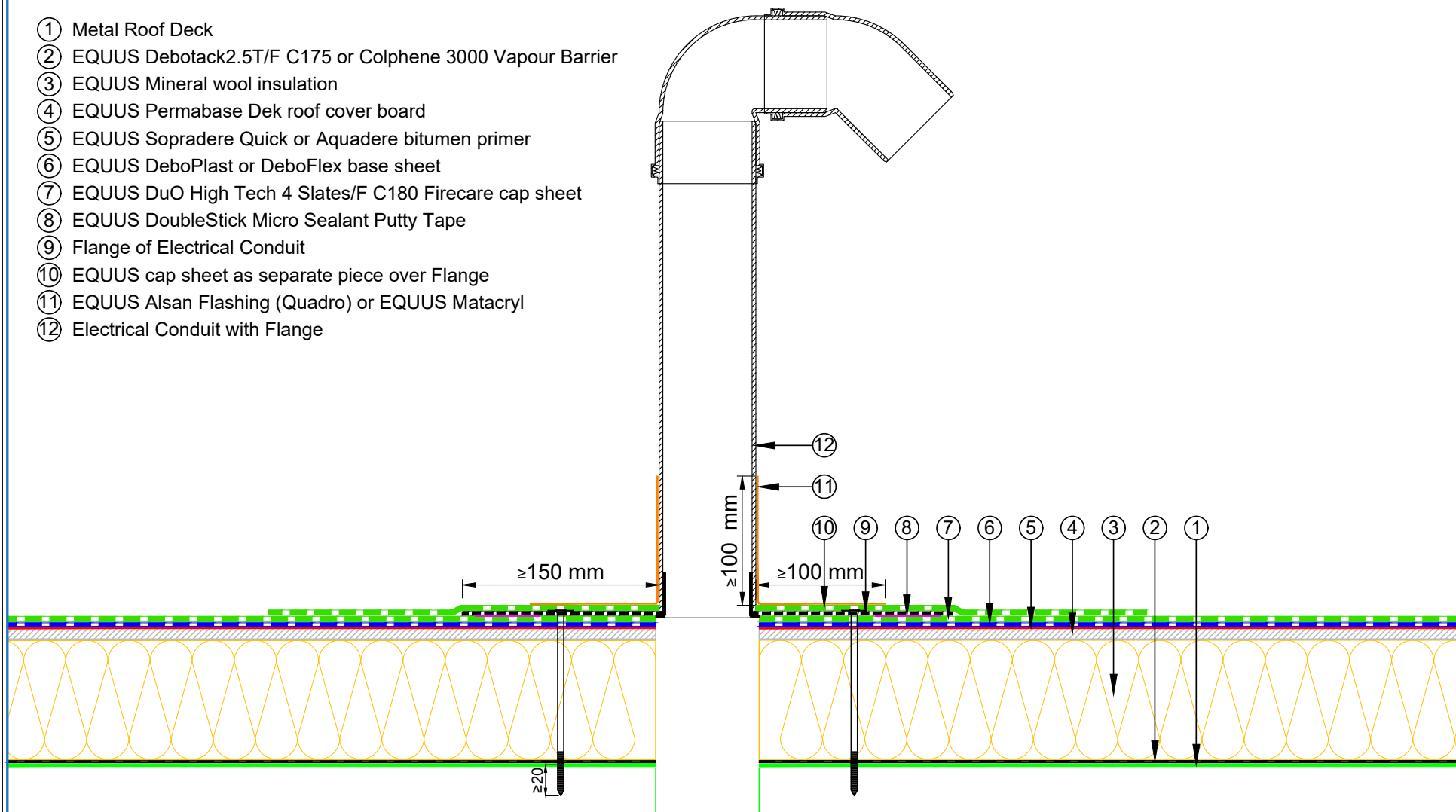
- ① Metal Roof Deck
- ② EQUUS Debotack2.5T/F C175 or Colphene 3000 Vapour Barrier
- ③ EQUUS SOPRAROCK mineral wool thermal insulation
- ④ EQUUS DeboPlast or DeboFlex base sheet
- ⑤ EQUUS DuO High Tech 4 Slates/F C180 Firecare cap sheet
- ⑥ Plywood Plinth
- ⑦ EQUUS Sopradere Quick or Aquadere bitumen primer
- ⑧ EQUUS Alsan Mastic 2200 bitumen sealant
- ⑨ EQUUS cap sheet as separate piece over Plywood Plinth
- ⑩ EQUUS Alsan Flashing (Quadro) or EQUUS Matacyl
- ⑪ Electrical Conduit with SBS Flange



PROJECT :	Warm Roof on Metal Standard Detail - DuO		
TITLE :	Electrical conduit (Mineral wool insulation)		
NUMBER :	SDWRM-D6b	SCALE :	1 : 4
DRAWN BY :	NKT	DATE :	22-Jan-2022
REVISED :			

Equus Waterproof Membrane Details are specially drawn for use by Local Authorities, Building Contractors, Equus Applicators, Architects and design professionals. All details are drawn to assist in the development of project specific details. Details may be modified where necessary to accommodate job specific requirements but must be approved by Equus Industries Ltd. All components must be supplied by Equus Industries Ltd. Equus reserves the right to alter or upgrade details at any time without prior notice.

- ① Metal Roof Deck
- ② EQUUS Debotack2.5T/F C175 or Colphene 3000 Vapour Barrier
- ③ EQUUS Mineral wool insulation
- ④ EQUUS Permabase Dek roof cover board
- ⑤ EQUUS Sopradere Quick or Aquadere bitumen primer
- ⑥ EQUUS DeboPlast or DeboFlex base sheet
- ⑦ EQUUS DuO High Tech 4 Slates/F C180 Firecare cap sheet
- ⑧ EQUUS DoubleStick Micro Sealant Putty Tape
- ⑨ Flange of Electrical Conduit
- ⑩ EQUUS cap sheet as separate piece over Flange
- ⑪ EQUUS Alsan Flashing (Quadro) or EQUUS Matacyl
- ⑫ Electrical Conduit with Flange



E-mail : admin@equus.co.nz
Web : www.equus.co.nz

PROJECT :	Warm Roof on Metal Standard Detail - DuO		
TITLE :	Electrical conduit with roof cover board (Mineral wool insulation)		
NUMBER :	SDWRM-D6c	SCALE :	NTS
DRAWN BY :	NKT	DATE :	15-Feb-2022
REVISED :			

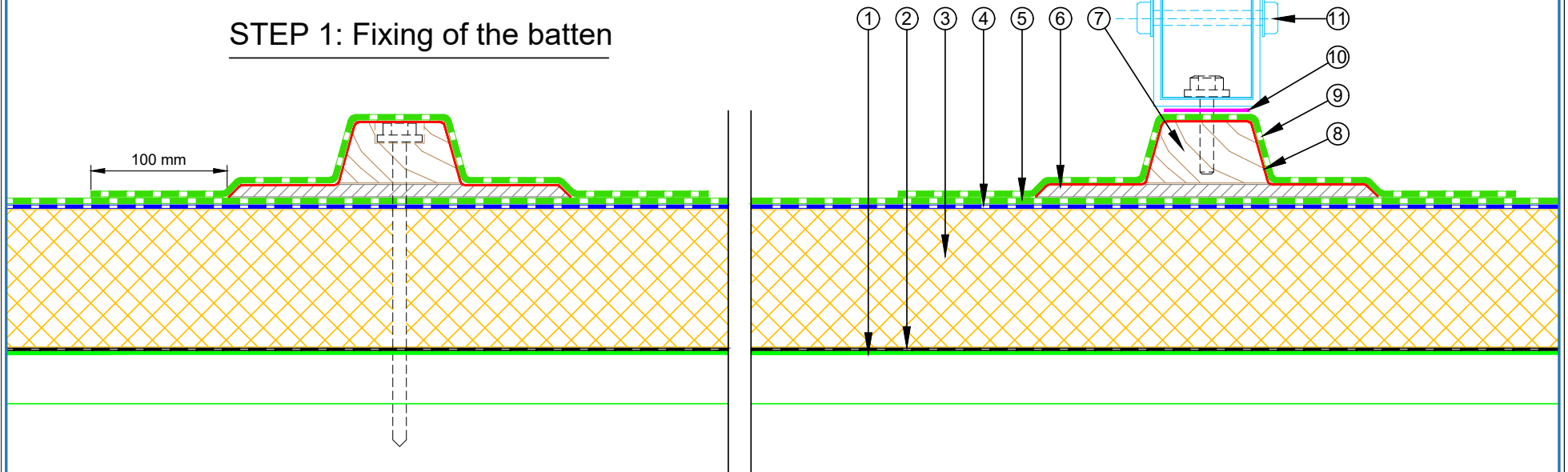
Equus Waterproof Membrane Details are specially drawn for use by Local Authorities, Building Contractors, Equus Applicators, Architects and design professionals. All details are drawn to assist in the development of project specific details. Details may be modified where necessary to accommodate job specific requirements but must be approved by Equus Industries Ltd. All components must be supplied by Equus Industries Ltd. Equus reserves the right to alter or upgrade details at any time without prior notice.



- ① Metal Roof Deck
- ② EQUUS Debotack2.5T/F C175 or Colphene 3000 Vapour Barrier
- ③ EQUUS PIR thermal insulation
- ④ EQUUS Debotack 2.5 T/F C175 Aero base sheet
- ⑤ EQUUS DuO High Tech 4 Slates/F C180 Firecare cap sheet
- ⑥ EQUUS Permabase Dek roof cover board
- ⑦ Timber Roof Batten
- ⑧ EQUUS Sopradere Quick or Aquadere bitumen primer
- ⑨ EQUUS cap sheet as separate piece over Plywood Plinth
- ⑩ EPDM Washer under Screwhead
- ⑪ Roof Equipment

STEP 1: Fixing of the batten

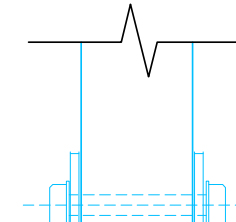
STEP 2: Fixing of the Equipment



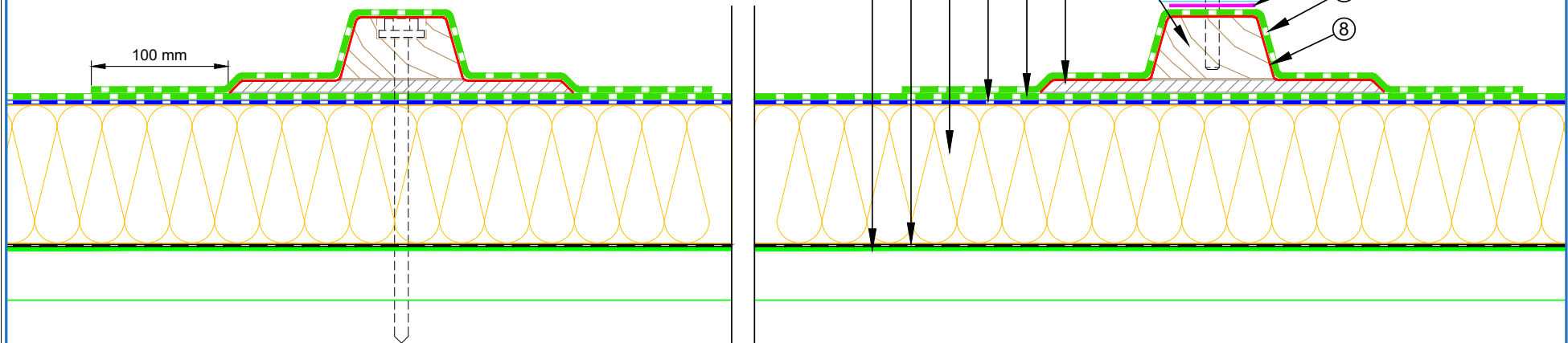
PROJECT :	Warm Roof on Metal Standard Detail - DuO		
TITLE :	Roof Equipment Support Batten (PIR insulation)		
NUMBER :	SDWRM-D7a	SCALE :	1 : 4
DRAWN BY :	NKT	DATE :	23-Jan-2022
REVISED :			
<p><small>Equus Waterproof Membrane Details are specially drawn for use by Local Authorities, Building Contractors, Equus Applicators, Architects and design professionals. All details are drawn to assist in the development of project specific details. Details may be modified where necessary to accommodate job specific requirements but must be approved by Equus Industries Ltd. All components must be supplied by Equus Industries Ltd. Equus reserves the right to alter or upgrade details at any time without prior notice.</small></p>			

- ① Metal Roof Deck
- ② EQUUS Debotack2.5T/F C175 or Colphene 3000 Vapour Barrier
- ③ EQUUS SOPRAROCK mineral wool thermal insulation
- ④ EQUUS DeboPlast or DeboFlex base sheet
- ⑤ EQUUS DuO High Tech 4 Slates/F C180 Firecare cap sheet
- ⑥ EQUUS Permabase Dek roof cover board
- ⑦ Timber Roof Batten
- ⑧ EQUUS Sopradere Quick or Aquadere bitumen primer
- ⑨ EQUUS cap sheet as separate piece over Plywood Plinth
- ⑩ EPDM Washer under Screwhead
- ⑪ Roof Equipment

STEP 2: Fixing of the Equipment



STEP 1: Fixing of the batten



E-mail : admin@equus.co.nz
Web : www.equus.co.nz

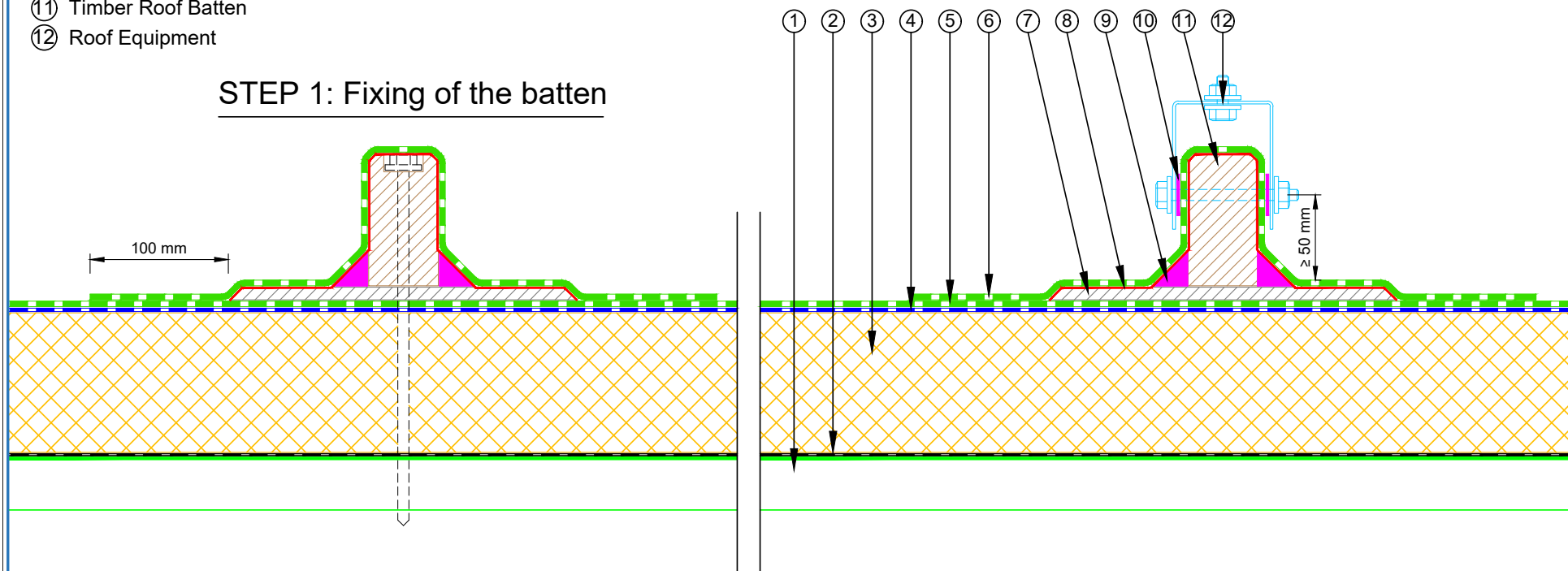
PROJECT :	Standard Detail		
TITLE :	Roof Equipment Support Batten (Mineral wool insulation)		
NUMBER :	SDWRM-D7b	SCALE :	1 : 4
DRAWN BY :	NKT	DATE :	23-Jan-2022
		REVISED :	
<p><small>Equus Waterproof Membrane Details are specially drawn for use by Local Authorities, Building Contractors, Equus Applicators, Architects and design professionals. All details are drawn to assist in the development of project specific details. Details may be modified where necessary to accommodate job specific requirements but must be approved by Equus Industries Ltd. All components must be supplied by Equus Industries Ltd. Equus reserves the right to alter or upgrade details at any time without prior notice.</small></p>			



- ① Metal Roof Deck
- ② EQUUS Debotack2.5T/F C175 or Colphene 3000 Vapour Barrier
- ③ EQUUS PIR thermal insulation
- ④ EQUUS Debotack 2.5 T/F C175 Aero base sheet
- ⑤ EQUUS DuO High Tech 4 Slates/F C180 Firecare cap sheet
- ⑥ EQUUS cap sheet as separate piece over Plywood Plinth
- ⑦ EQUUS Permabase Dek roof cover board
- ⑧ EQUUS Sopradere Quick or Aquadere bitumen primer
- ⑨ EQUUS bitumen fillet or approved alternative
- ⑩ EPDM Washer under Screwhead
- ⑪ Timber Roof Batten
- ⑫ Roof Equipment

STEP 1: Fixing of the batten

STEP 2: Fixing of the Equipment



E-mail : admin@equus.co.nz
Web : www.equus.co.nz

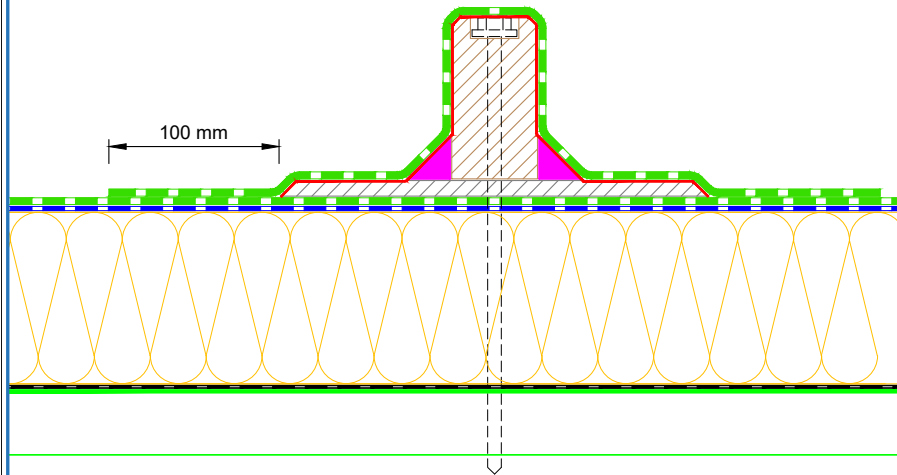
PROJECT :	Warm Roof on Metal Standard Detail - DuO		
TITLE :	Roof Equipment Support Batten - optional (PIR insulation)		
NUMBER :	SDWRM-D7c	SCALE :	1 : 4
DRAWN BY :	NKT	DATE :	23-Jan-2022
REVISED :			

Equus Waterproof Membrane Details are specially drawn for use by Local Authorities, Building Contractors, Equus Applicators, Architects and design professionals. All details are drawn to assist in the development of project specific details. Details may be modified where necessary to accommodate job specific requirements but must be approved by Equus Industries Ltd. All components must be supplied by Equus Industries Ltd. Equus reserves the right to alter or upgrade details at any time without prior notice.

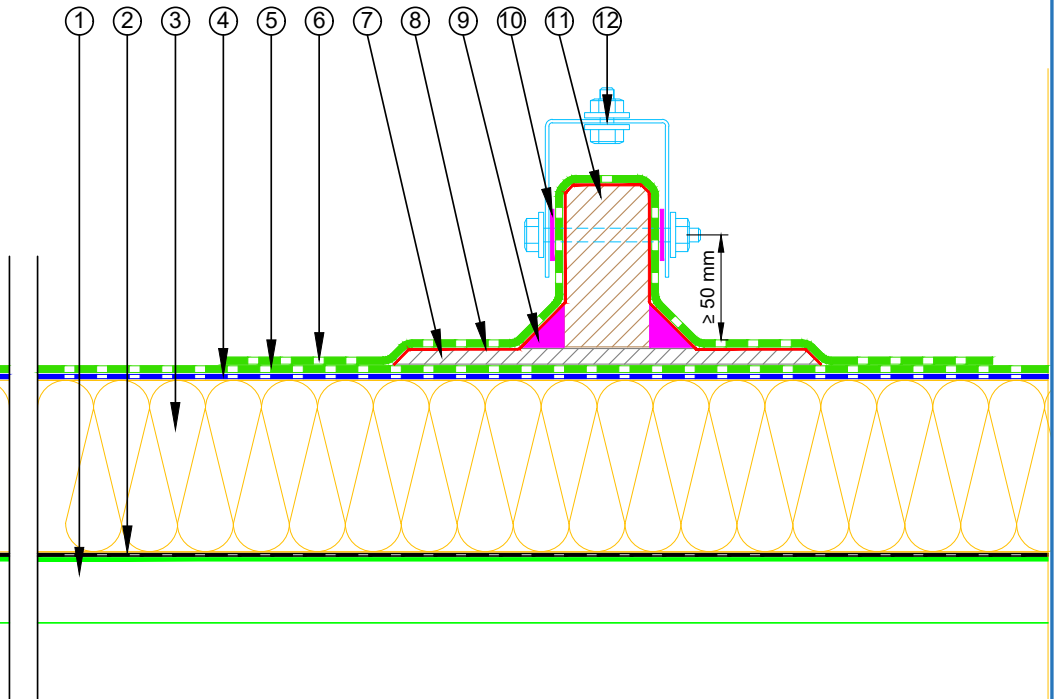


- ① Metal Roof Deck
- ② EQUUS Debotack2.5T/F C175 or Colphene 3000 Vapour Barrier
- ③ EQUUS SOPRAROCK mineral wool thermal insulation
- ④ EQUUS DeboPlast or DeboFlex base sheet
- ⑤ EQUUS DuO High Tech 4 Slates/F C180 Firecare cap sheet
- ⑥ EQUUS cap sheet as separate piece over Plywood Plinth
- ⑦ EQUUS Permabase Dek roof cover board
- ⑧ EQUUS Sopradere Quick or Aquadere bitumen primer
- ⑨ EQUUS bitumen fillet or approved alternative
- ⑩ EPDM Washer under Screwhead
- ⑪ Timber Roof Batten
- ⑫ Roof Equipment

STEP 1: Fixing of the batten



STEP 2: Fixing of the Equipment



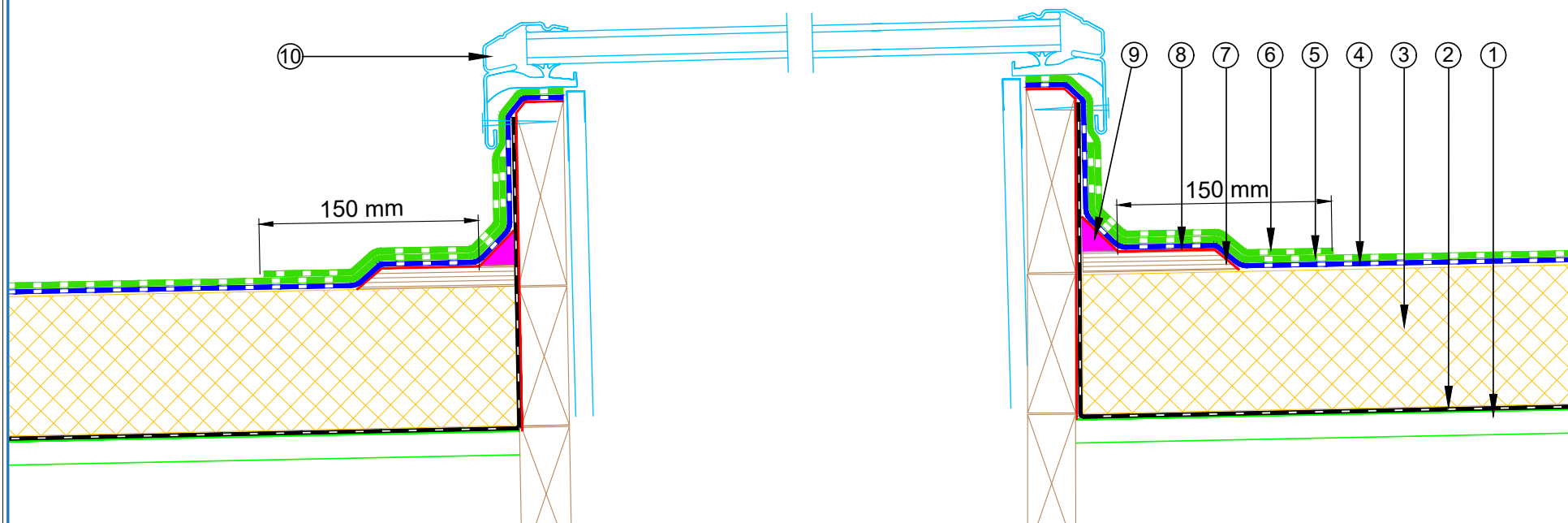
E-mail : admin@equus.co.nz
Web : www.equus.co.nz

PROJECT :	Warm Roof on Metal Standard Detail - DuO		
TITLE :	Roof Equipment Support Batten - optional (Mineral wool insulation)		
NUMBER :	SDWRM-D7d	SCALE :	1 : 4
DRAWN BY :	NKT	DATE :	23-Jan-2022
REVISED :			

Equus Waterproof Membrane Details are specially drawn for use by Local Authorities, Building Contractors, Equus Applicators, Architects and design professionals. All details are drawn to assist in the development of project specific details. Details may be modified where necessary to accommodate job specific requirements but must be approved by Equus Industries Ltd. All components must be supplied by Equus Industries Ltd. Equus reserves the right to alter or upgrade details at any time without prior notice.

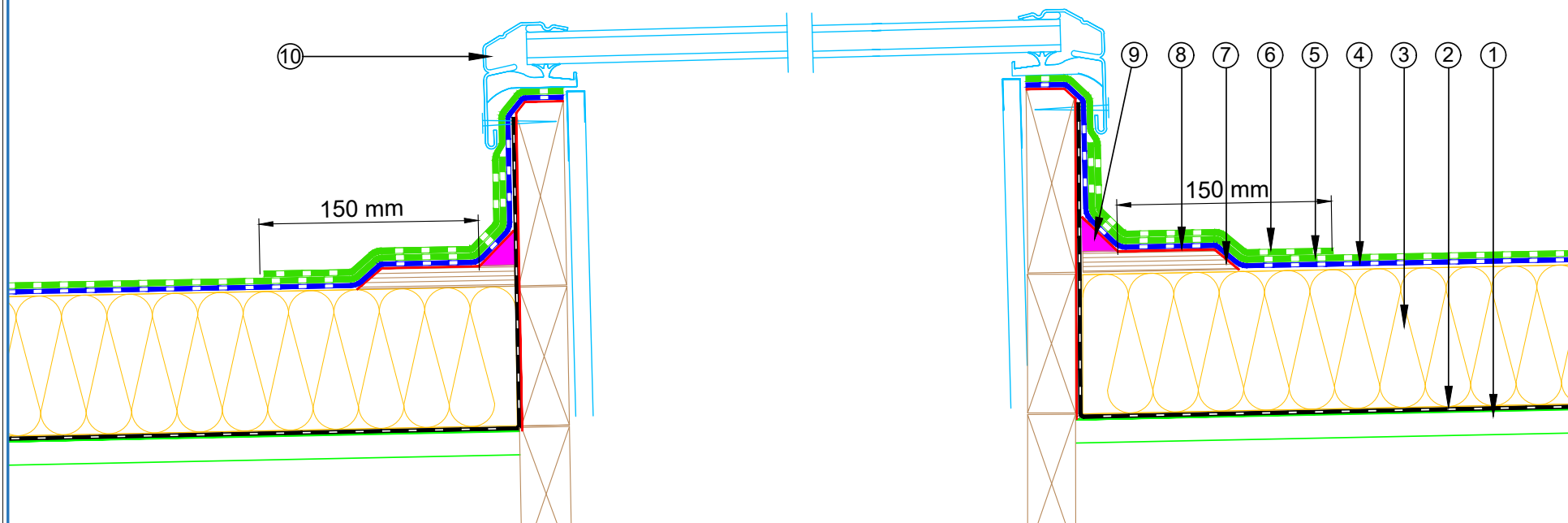


- ① Metal Roof Deck
- ② EQUUS Debotack2.5T/F C175 or Colphene 3000 Vapour Barrier
- ③ EQUUS PIR thermal insulation
- ④ EQUUS Debotack 2.5 T/F C175 Aero base sheet
- ⑤ EQUUS DuO High Tech 4 Slates/F C180 Firecare cap sheet
- ⑥ EQUUS cap sheet as separate piece over Plywood Plinth
- ⑦ Plywood Plinth
- ⑧ EQUUS Sopradere Quick or Aquadere bitumen primer
- ⑨ EQUUS bitumen fillet or approved alternative
- ⑩ Skylight Joinery



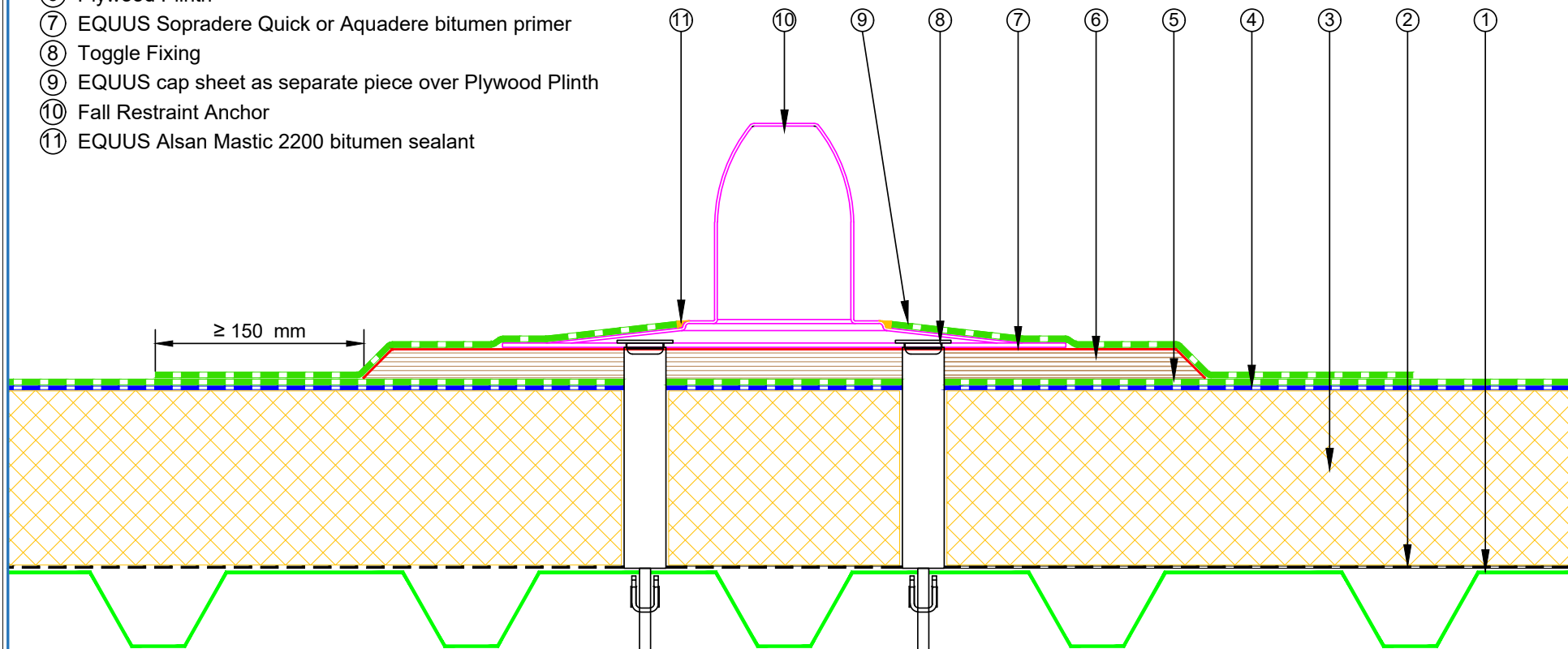
 E-mail : admin@equus.co.nz Web : www.equus.co.nz	PROJECT :	Warm Roof on Metal Standard Detail - DuO		
	TITLE :	Skylight (PIR insulation)		
	NUMBER :	SDWRM-D8a	SCALE :	1 : 4
	DRAWN BY :	NKT	DATE :	24-Jan-2022
			REVISED :	
Equus Waterproof Membrane Details are specially drawn for use by Local Authorities, Building Contractors, Equus Applicators, Architects and design professionals. All details are drawn to assist in the development of project specific details. Details may be modified where necessary to accommodate job specific requirements but must be approved by Equus Industries Ltd. All components must be supplied by Equus Industries Ltd. Equus reserves the right to alter or upgrade details at any time without prior notice.				
		AUTHORIZED DISTRIBUTOR SOPREMA		

- ① Metal Roof Deck
- ② EQUUS Debotack2.5T/F C175 or Colphene 3000 Vapour Barrier
- ③ EQUUS SOPRAROCK mineral wool thermal insulation
- ④ EQUUS DeboPlast or DeboFlex base sheet
- ⑤ EQUUS DuO High Tech 4 Slates/F C180 Firecare cap sheet
- ⑥ EQUUS cap sheet as separate piece over Plywood Plinth
- ⑦ Plywood Plinth
- ⑧ EQUUS Sopradere Quick or Aquadere bitumen primer
- ⑨ EQUUS bitumen fillet or approved alternative
- ⑩ Skylight Joinery



 E-mail : admin@equus.co.nz Web : www.equus.co.nz	PROJECT :	Warm Roof on Metal Standard Detail - DuO		
	TITLE :	Skylight (Mineral wool insulation)		
	NUMBER :	SDWRM-D8b	SCALE :	1 : 4
	DRAWN BY :	NKT	DATE :	24-Jan-2022
			REVISED :	
Equus Waterproof Membrane Details are specially drawn for use by Local Authorities, Building Contractors, Equus Applicators, Architects and design professionals. All details are drawn to assist in the development of project specific details. Details may be modified where necessary to accommodate job specific requirements but must be approved by Equus Industries Ltd. All components must be supplied by Equus Industries Ltd. Equus reserves the right to alter or upgrade details at any time without prior notice.				
		AUTHORIZED DISTRIBUTOR SOPREMA		

- ① Metal Roof Deck
- ② EQUUS Debotack2.5T/F C175 or Colphene 3000 Vapour Barrier
- ③ EQUUS PIR thermal insulation
- ④ EQUUS Debotack 2.5 T/F C175 Aero base sheet
- ⑤ EQUUS DuO High Tech 4 Slates/F C180 Firecare cap sheet
- ⑥ Plywood Plinth
- ⑦ EQUUS Sopradere Quick or Aquadere bitumen primer
- ⑧ Toggle Fixing
- ⑨ EQUUS cap sheet as separate piece over Plywood Plinth
- ⑩ Fall Restraint Anchor
- ⑪ EQUUS Alsan Mastic 2200 bitumen sealant

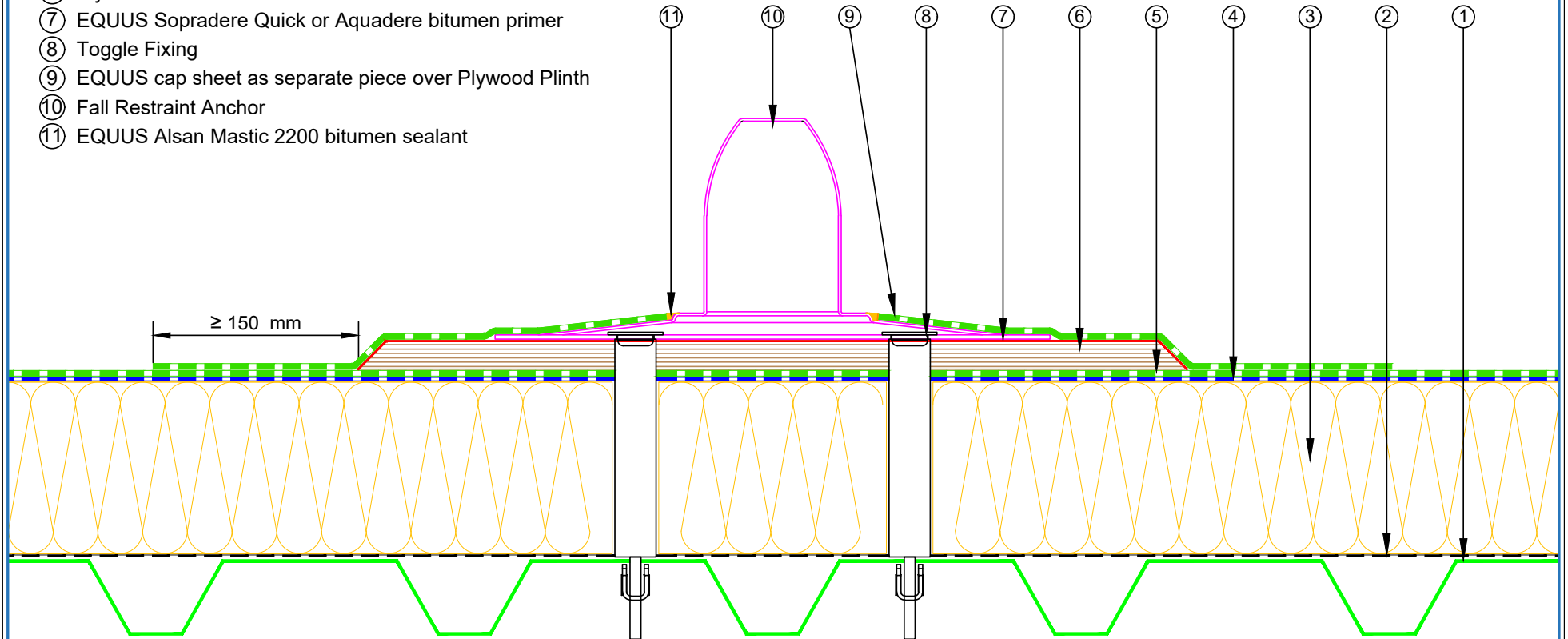


E-mail : admin@equus.co.nz
Web : www.equus.co.nz

PROJECT :	Warm Roof on Metal Standard Detail - DuO		
TITLE :	Fall restraint (PIR insulation)		
NUMBER :	SDWRM-D9a	SCALE :	1 : 4
DRAWN BY :	NKT	DATE :	24-Jan-2022
REVISED :			
<p><small>Equus Waterproof Membrane Details are specially drawn for use by Local Authorities, Building Contractors, Equus Applicators, Architects and design professionals. All details are drawn to assist in the development of project specific details. Details may be modified where necessary to accommodate job specific requirements but must be approved by Equus Industries Ltd. All components must be supplied by Equus Industries Ltd. Equus reserves the right to alter or upgrade details at any time without prior notice.</small></p>			



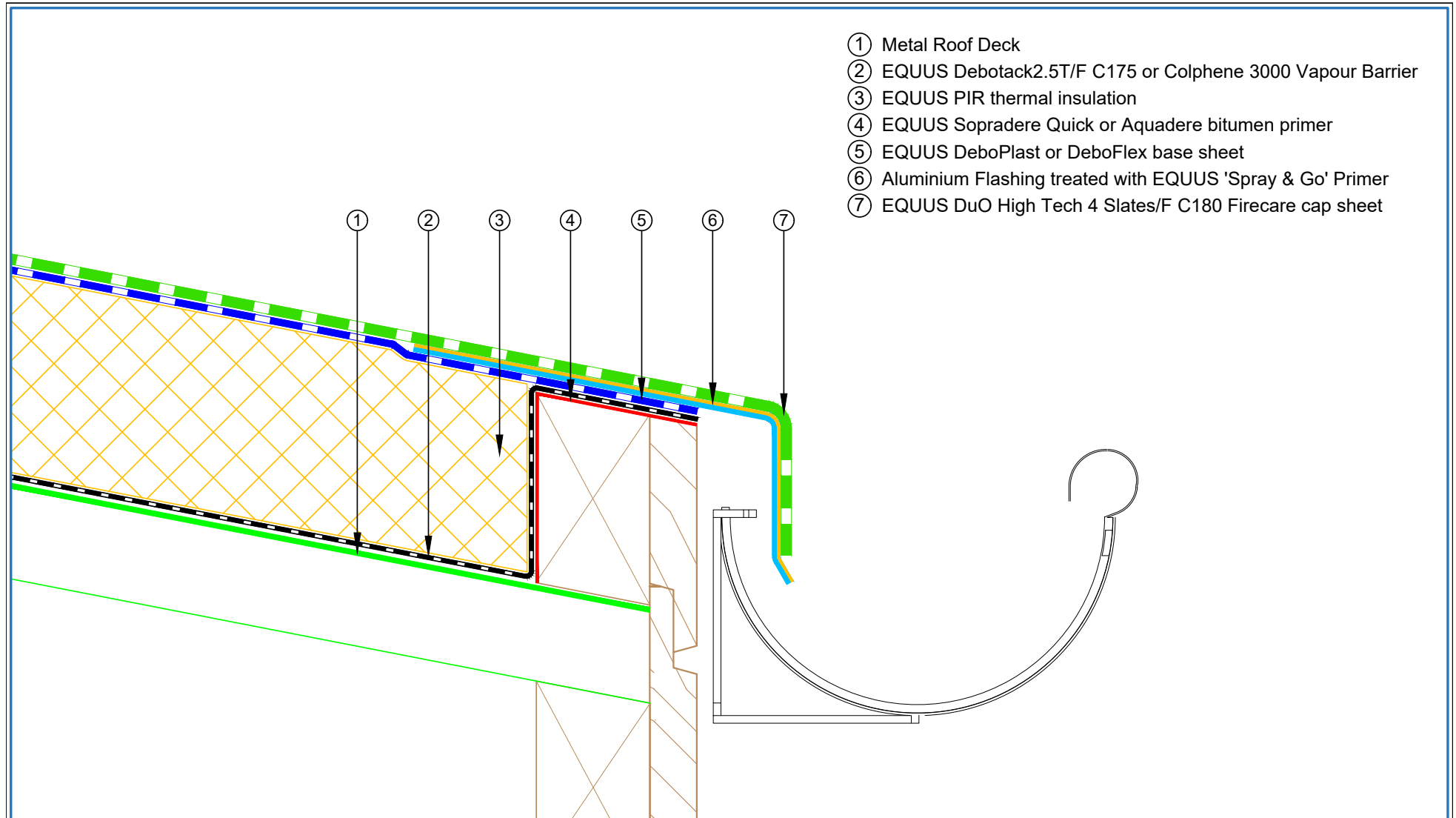
- ① Metal Roof Deck
- ② EQUUS Debotack2.5T/F C175 or Colphene 3000 Vapour Barrier
- ③ EQUUS SOPRAROCK mineral wool thermal insulation
- ④ EQUUS DeboPlast or DeboFlex base sheet
- ⑤ EQUUS DuO High Tech 4 Slates/F C180 Firecare cap sheet
- ⑥ Plywood Plinth
- ⑦ EQUUS Sopradere Quick or Aquadere bitumen primer
- ⑧ Toggle Fixing
- ⑨ EQUUS cap sheet as separate piece over Plywood Plinth
- ⑩ Fall Restraint Anchor
- ⑪ EQUUS Alsan Mastic 2200 bitumen sealant



E-mail : admin@equus.co.nz
Web : www.equus.co.nz

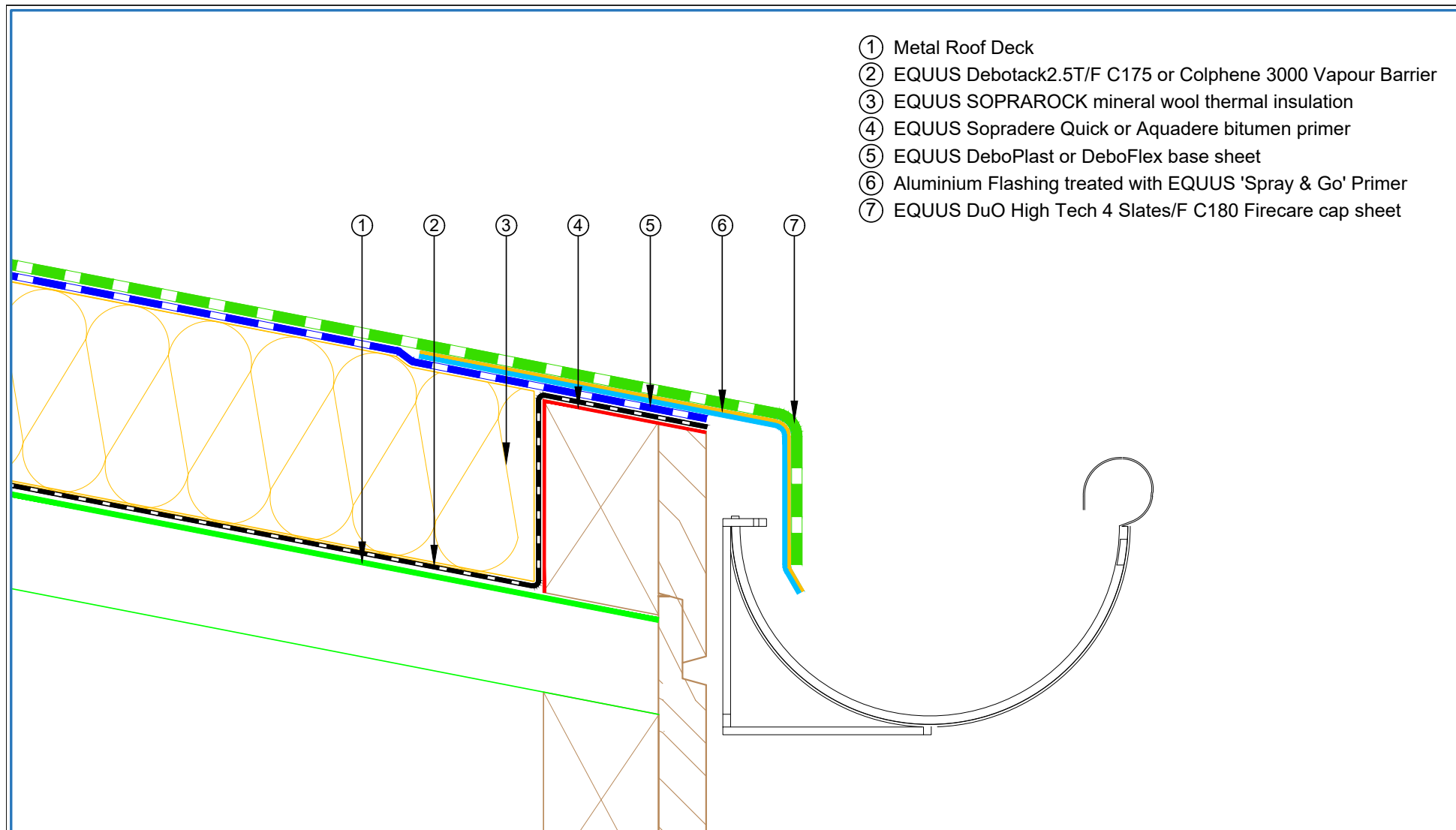
PROJECT :	Warm Roof on Metal Standard Detail - DuO		
TITLE :	Fall restraint (Mineral wool insulation)		
NUMBER :	SDWRM-D9b	SCALE :	1 : 4
DRAWN BY :	NKT	DATE :	24-Jan-2022
REVISED :			
<p><small>Equus Waterproof Membrane Details are specially drawn for use by Local Authorities, Building Contractors, Equus Applicators, Architects and design professionals. All details are drawn to assist in the development of project specific details. Details may be modified where necessary to accommodate job specific requirements but must be approved by Equus Industries Ltd. All components must be supplied by Equus Industries Ltd. Equus reserves the right to alter or upgrade details at any time without prior notice.</small></p>			

AUTHORISED DISTRIBUTOR
SOPREMA



- ① Metal Roof Deck
- ② EQUUS Debotack2.5T/F C175 or Colphene 3000 Vapour Barrier
- ③ EQUUS PIR thermal insulation
- ④ EQUUS Sopradere Quick or Aquadere bitumen primer
- ⑤ EQUUS DeboPlast or DeboFlex base sheet
- ⑥ Aluminium Flashing treated with EQUUS 'Spray & Go' Primer
- ⑦ EQUUS DuO High Tech 4 Slates/F C180 Firecare cap sheet

 E-mail : admin@equus.co.nz Web : www.equus.co.nz	PROJECT :		Warm Roof on Metal Standard Detail - DuO		
	TITLE :		Connection to External Gutter (PIR insulation)		
	NUMBER :	SDWRM-D10a	SCALE :	1 : 2	
	DRAWN BY :	NKT	DATE :	27-Aug-2022	
	REVISD :				
<p><small>Equus Waterproof Membrane Details are specially drawn for use by Local Authorities, Building Contractors, Equus Applicators, Architects and design professionals. All details are drawn to assist in the development of project specific details. Details may be modified where necessary to accommodate job specific requirements but must be approved by Equus Industries Ltd. All components must be supplied by Equus Industries Ltd. Equus reserves the right to alter or upgrade details at any time without prior notice.</small></p>					



- ① Metal Roof Deck
- ② EQUUS Debotack2.5T/F C175 or Colphene 3000 Vapour Barrier
- ③ EQUUS SOPRAROCK mineral wool thermal insulation
- ④ EQUUS Sopradere Quick or Aquadere bitumen primer
- ⑤ EQUUS DeboPlast or DeboFlex base sheet
- ⑥ Aluminium Flashing treated with EQUUS 'Spray & Go' Primer
- ⑦ EQUUS DuO High Tech 4 Slates/F C180 Firecare cap sheet

 E-mail : admin@equus.co.nz Web : www.equus.co.nz	PROJECT :		Warm Roof on Metal Standard Detail - DuO		 AUTHORISED DISTRIBUTOR SOPREMA	
	TITLE :		Connection to External Gutter (Mineral wool insulation)			
	NUMBER :		SDWRM-D10b	SCALE :		1 : 2
	DRAWN BY :		NKT	DATE :		27-Aug-2022
				REVISED :		
<p><small>Equus Waterproof Membrane Details are specially drawn for use by Local Authorities, Building Contractors, Equus Applicators, Architects and design professionals. All details are drawn to assist in the development of project specific details. Details may be modified where necessary to accommodate job specific requirements but must be approved by Equus Industries Ltd. All components must be supplied by Equus Industries Ltd. Equus reserves the right to alter or upgrade details at any time without prior notice.</small></p>						