



# EQUUS SOPREMA COLPHENE BSW TANKING SYSTEM

Standard Detail Package



CELEBRATING  
**40** YEARS  
1982-2022

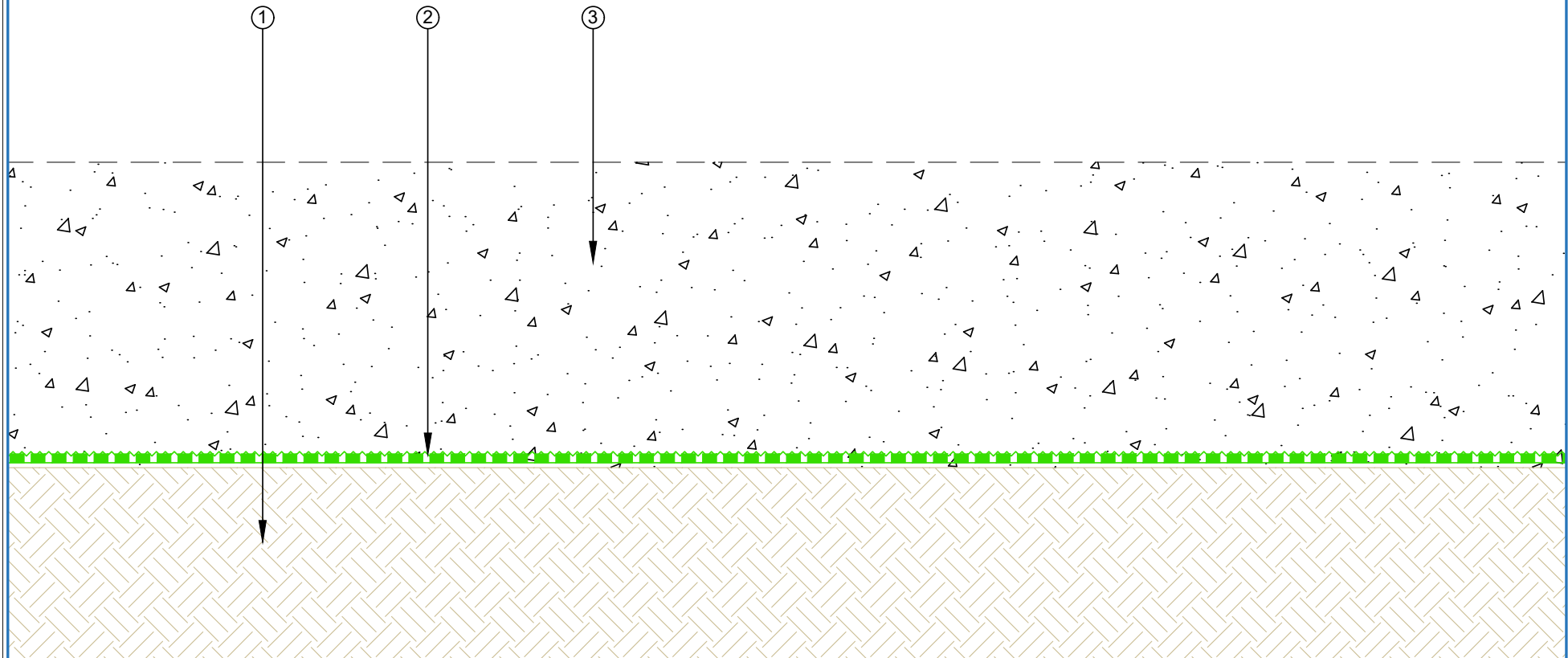



MARCH 2024

## CONTENTS

SBBWS-D1a	Horizontal Slab to Compacted Earth	1	SBBWS-D5d	Floor Wall Connection to DPM (Optional)	14
SBBWS-D1b	Horizontal Slab	2	SBBWS-D6a	Wall and Footing	15
SBBWS-D1c	Horizontal Slab with Thermal Insulation	3	SBBWS-D6b	Wall and Footing (Optional)	16
SBBWS-D2a	Pipe Penetration Through Floor Slab	4	SBBWS-D7a	Floor Slab Waterproofing	17
SBBWS-D2b	Pipe Penetration Through Floor Slab (Optional)	5	SBBWS-D8a	Turn Up Detail to Compatible Permanent Formwork	18
SBBWS-D3a	Pile Cap	6	SBBWS-D9a	Seismic Joint	19
SBBWS-D3b	Pile Cap (Lost Formwork) Overview	7	SBBWS-D10a	Lift Pit Detail – Lift Pit Waterproofing – Overview	20
SBBWS-D3b(1)	Pile Cap (Lost Formwork) Magnifier	8	SBBWS-D10a(1)	Lift Pit Detail – Floor Wall Connection	21
SBBWS-D3b(2)	Pile Cap (Lost Formwork) Magnifier	9	SBBWS-D10a(2)	Lift Pit Detail – Membrane Termination	22
SBBWS-D3b(3)	Pile Cap (Lost Formwork) Magnifier	10	SBBWS-D10a(3)	Lift Pit Detail – Membrane and DPM	23
SBBWS-D5a	Floor Wall Connection	11	SBBWS-D10a(4)	Lift Pit Detail – Membrane Connection	24
SBBWS-D5b	Floor Wall Connection to DPM	12	SBBWS-D12a	Penetration Diameter Under 50 mm	25
SBBWS-D5c	Floor Wall Connection (Optional)	13			

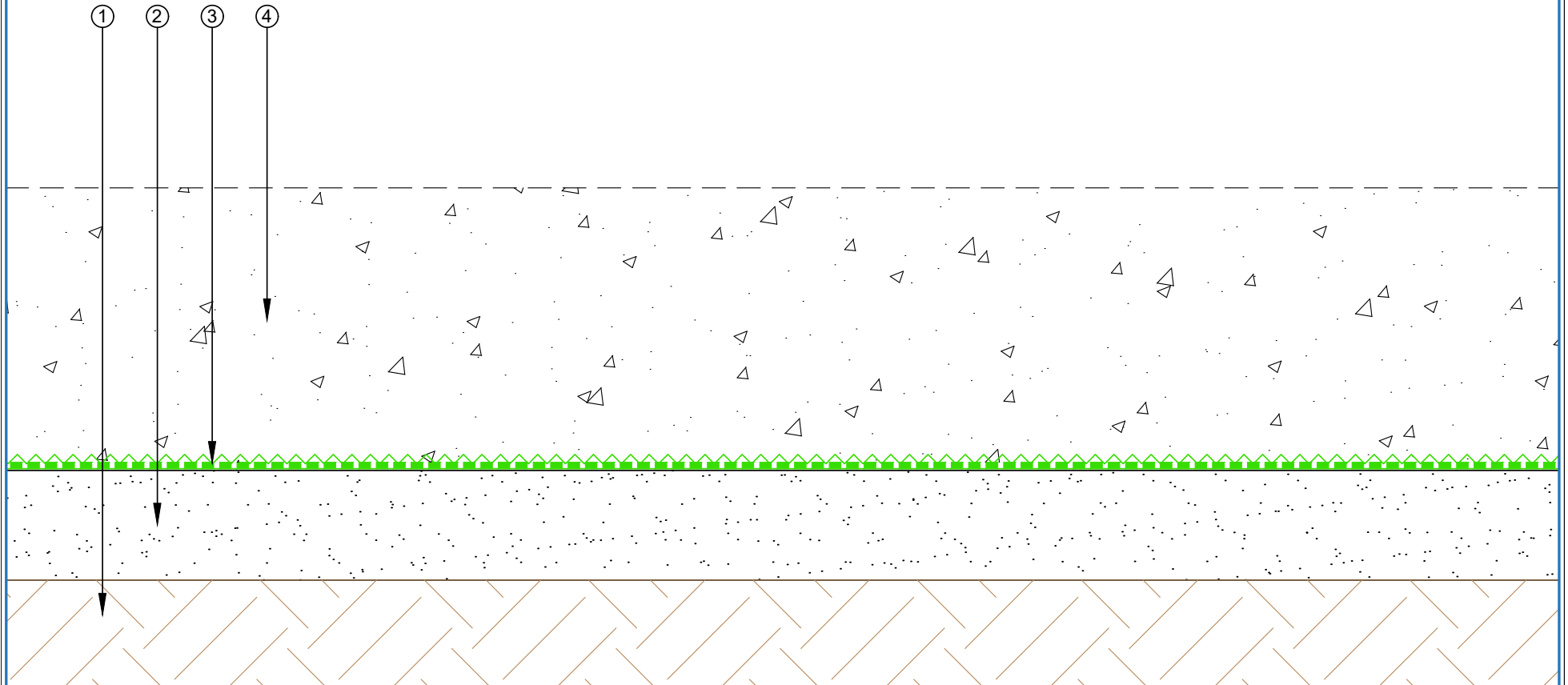
- ① Compacted Earth
- ② EQUUS SOPREMA Colphene BSW H, Waterproofing membrane
- ③ Reinforced Concrete Slab



 E-mail : <a href="mailto:admin@equus.co.nz">admin@equus.co.nz</a> Web : <a href="http://www.equus.co.nz">www.equus.co.nz</a>	PROJECT :		Belowgrade Waterproofing Detail - BSW			
	TITLE :		Horizontal Slab to compacted earth Detail			
	NUMBER :		SBBWS-D1a		SCALE :	1:5
	DRAWN BY :		NKT	DATE :	09-Aug-2022	REVISED :
	<p>Equus Waterproof Membrane Details are specially drawn for use by Local Authorities, Building Contractors, Equus Applicators, Architects and design professionals. All details are drawn to assist in the development of project specific details. Details may be modified where necessary to accommodate job specific requirements but must be approved by Equus Industries Ltd. All components must be supplied by Equus Industries Ltd. Equus reserves the right to alter or upgrade details at any time without prior notice.</p>					

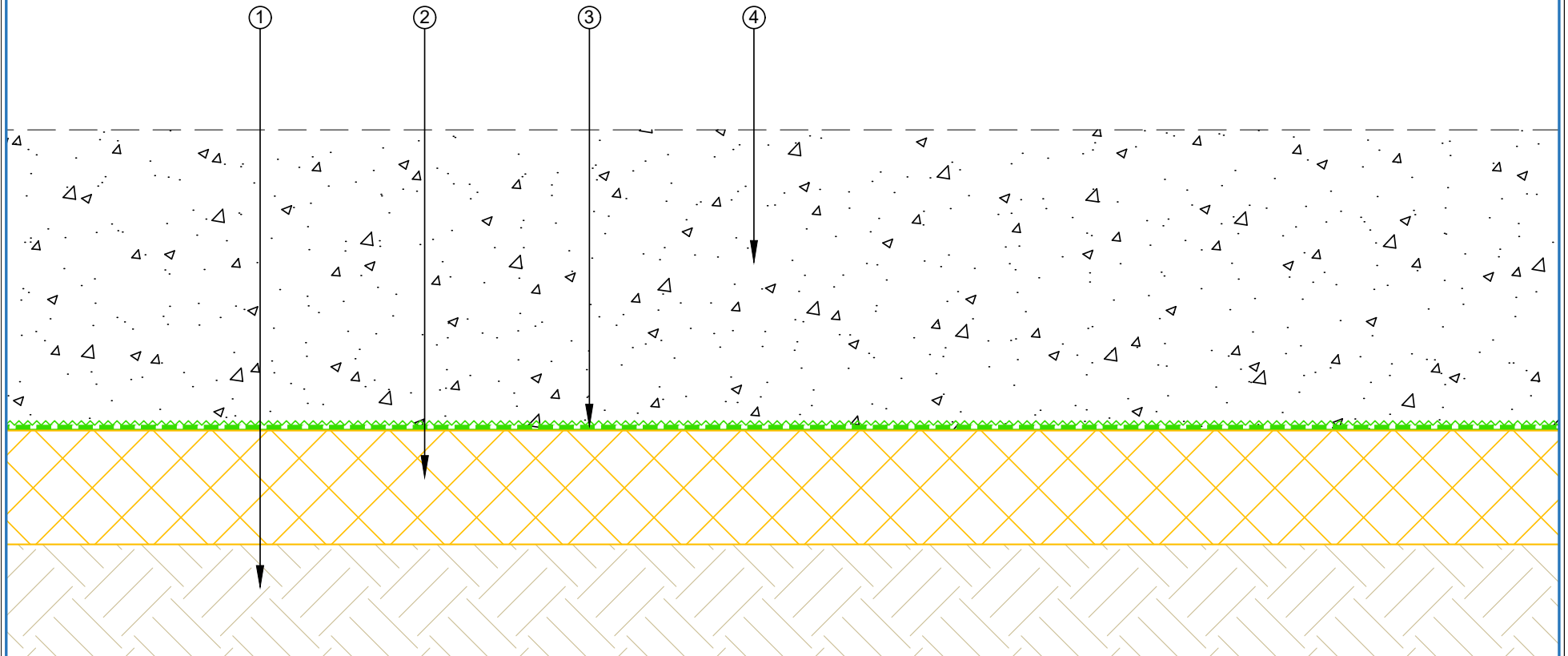



- ① Soil
- ② Lean Concrete
- ③ EQUUS SOPREMA Colphene BSW H, Waterproofing membrane
- ④ Slab



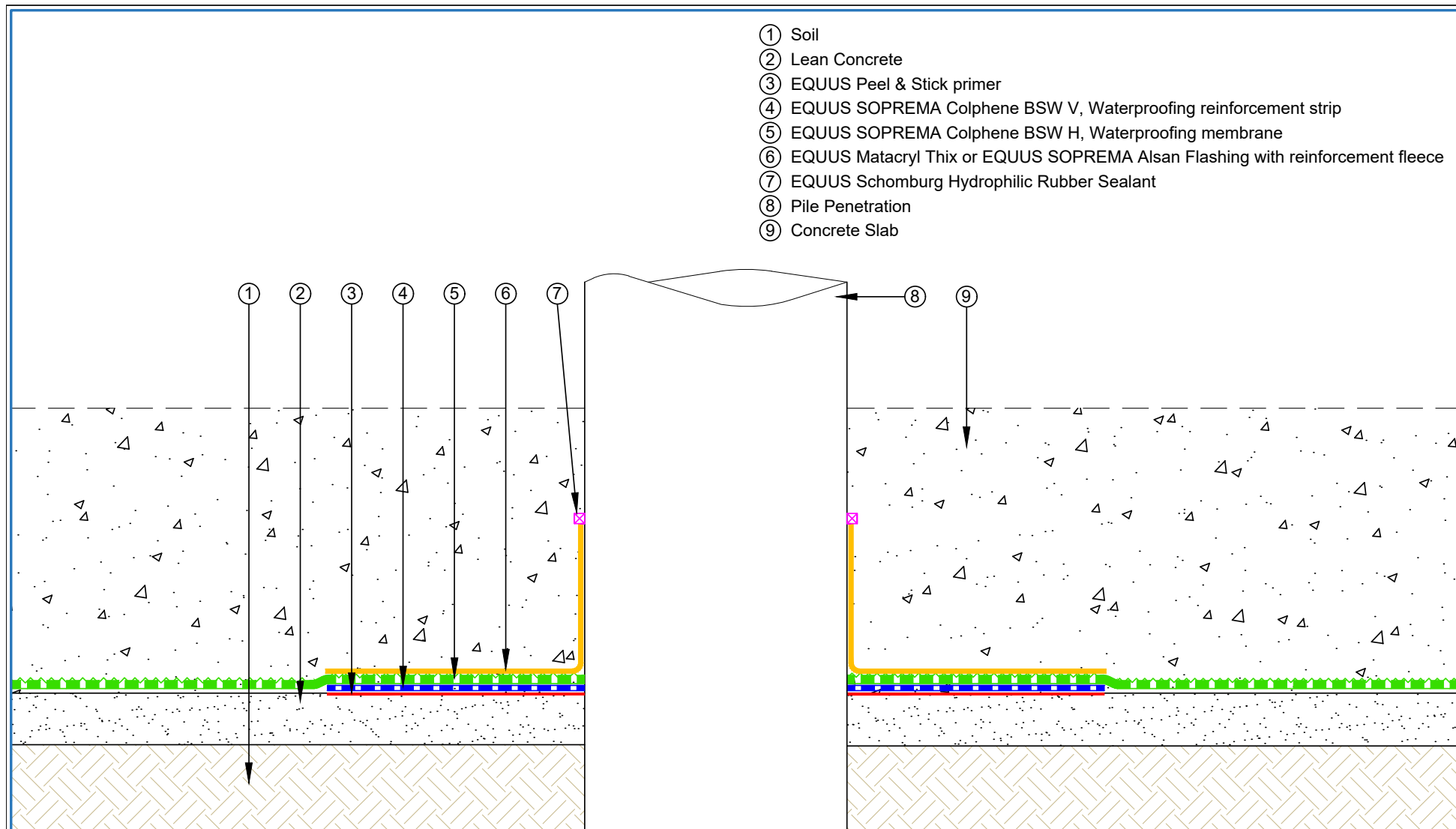
 E-mail : <a href="mailto:admin@equus.co.nz">admin@equus.co.nz</a> Web : <a href="http://www.equus.co.nz">www.equus.co.nz</a>	PROJECT :		Belowgrade Waterproofing Detail - BSW		 AUTHORISED DISTRIBUTOR <b>SOPREMA</b>	
	TITLE :		Horizontal Slab Detail			
	NUMBER :		SBBWS-D1b	SCALE :		1:3
	DRAWN BY :	NKT	DATE :	09-Aug-2022		REVISED :
	Equus Waterproof Membrane Details are specially drawn for use by Local Authorities, Building Contractors, Equus Applicators, Architects and design professionals. All details are drawn to assist in the development of project specific details. Details may be modified where necessary to accommodate job specific requirements but must be approved by Equus Industries Ltd. All components must be supplied by Equus Industries Ltd. Equus reserves the right to alter or upgrade details at any time without prior notice.					

- ① Compacted Earth
- ② Thermal insulation
- ③ EQUUS SOPREMA Colphene BSW H, Waterproofing membrane
- ③ Reinforced Concrete Slab



 E-mail : <a href="mailto:admin@equus.co.nz">admin@equus.co.nz</a> Web : <a href="http://www.equus.co.nz">www.equus.co.nz</a>	PROJECT :		Belowgrade Waterproofing Detail - BSW			
	TITLE :		Horizontal Slab with thermal insulation Detail			
	NUMBER :		SBBWS-D1c	SCALE :	1:5	
	DRAWN BY :		NKT	DATE :	10-Aug-2022	REVISED :
	<p>Equus Waterproof Membrane Details are specially drawn for use by Local Authorities, Building Contractors, Equus Applicators, Architects and design professionals. All details are drawn to assist in the development of project specific details. Details may be modified where necessary to accommodate job specific requirements but must be approved by Equus Industries Ltd. All components must be supplied by Equus Industries Ltd. Equus reserves the right to alter or upgrade details at any time without prior notice.</p>					



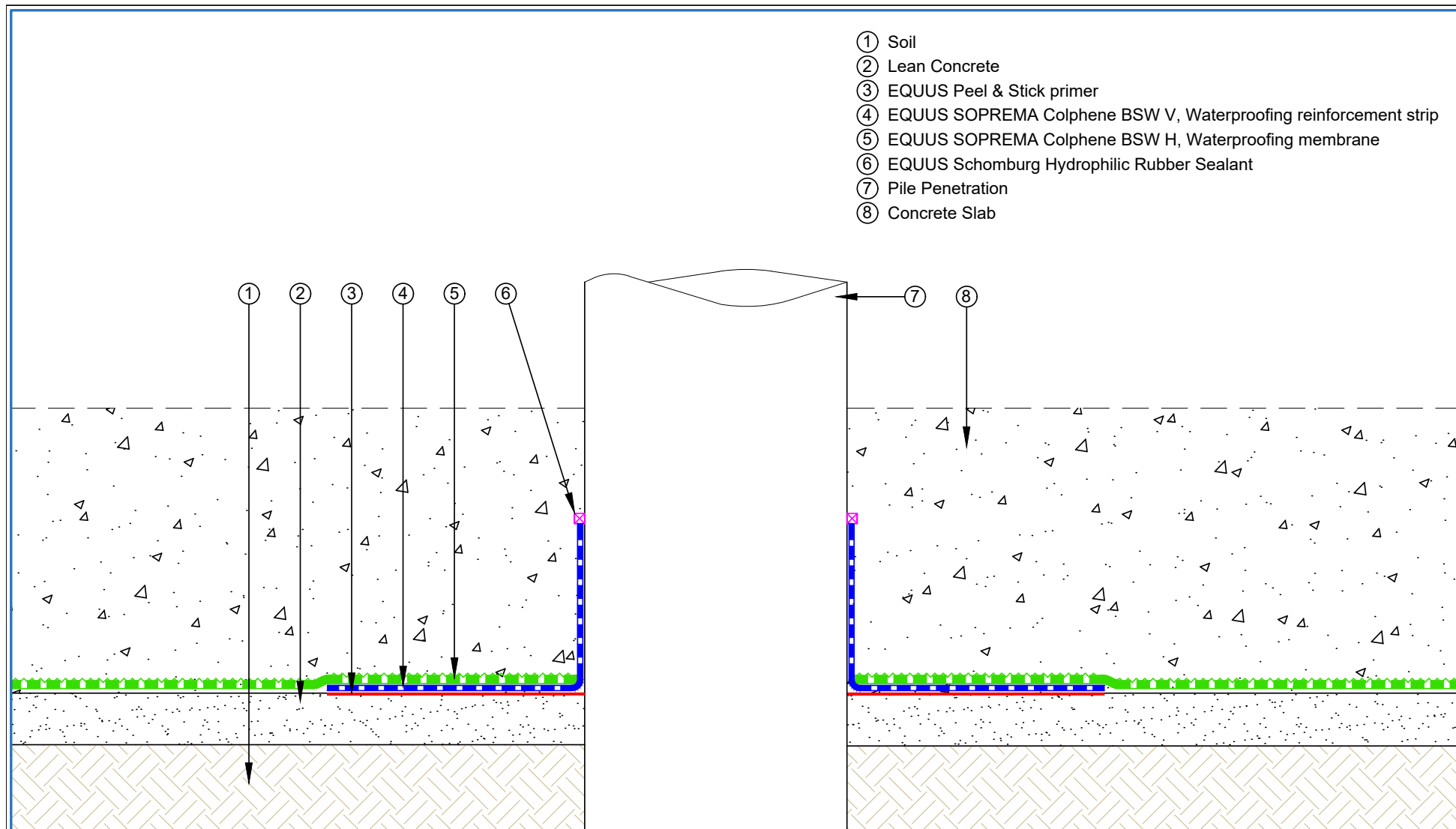


- ① Soil
- ② Lean Concrete
- ③ EQUUS Peel & Stick primer
- ④ EQUUS SOPREMA Colphene BSW V, Waterproofing reinforcement strip
- ⑤ EQUUS SOPREMA Colphene BSW H, Waterproofing membrane
- ⑥ EQUUS Matacryn Thix or EQUUS SOPREMA Alsan Flashing with reinforcement fleece
- ⑦ EQUUS Schomburg Hydrophilic Rubber Sealant
- ⑧ Pile Penetration
- ⑨ Concrete Slab

E-mail : [admin@equus.co.nz](mailto:admin@equus.co.nz)  
Web : [www.equus.co.nz](http://www.equus.co.nz)

PROJECT :	Belowgrade Waterproofing Detail - BSW		
TITLE :	Pipe Penetration through floor slab Detail		
NUMBER :	SBBWS-D2a	SCALE :	1:5
DRAWN BY :	NKT	DATE :	10-Aug-2022
		REVISED :	
<p><small>Equus Waterproof Membrane Details are specially drawn for use by Local Authorities, Building Contractors, Equus Applicators, Architects and design professionals. All details are drawn to assist in the development of project specific details. Details may be modified where necessary to accommodate job specific requirements but must be approved by Equus Industries Ltd. All components must be supplied by Equus Industries Ltd. Equus reserves the right to alter or upgrade details at any time without prior notice.</small></p>			

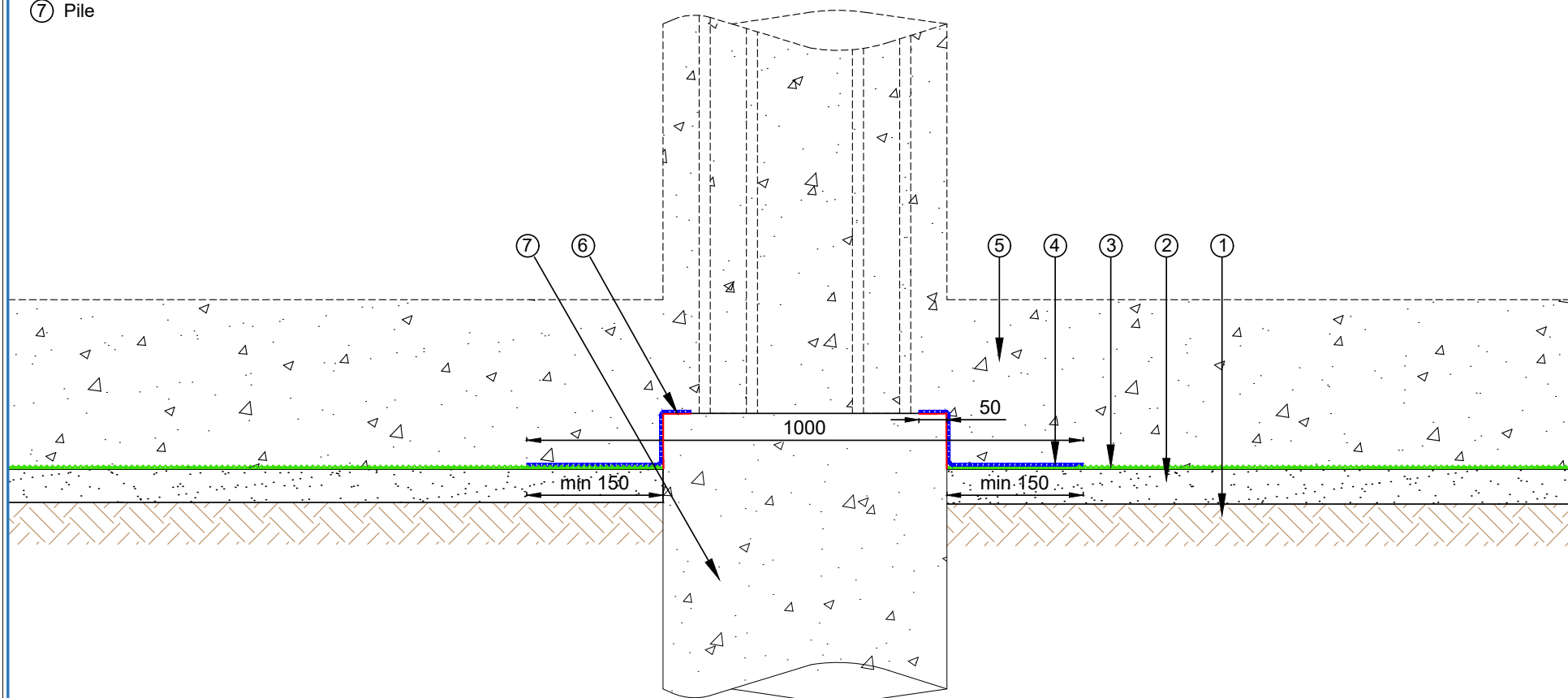
AUTHORISED DISTRIBUTOR  
**SOPREMA**



- ① Soil
- ② Lean Concrete
- ③ EQUUS Peel & Stick primer
- ④ EQUUS SOPREMA Colphene BSW V, Waterproofing reinforcement strip
- ⑤ EQUUS SOPREMA Colphene BSW H, Waterproofing membrane
- ⑥ EQUUS Schomburg Hydrophilic Rubber Sealant
- ⑦ Pile Penetration
- ⑧ Concrete Slab

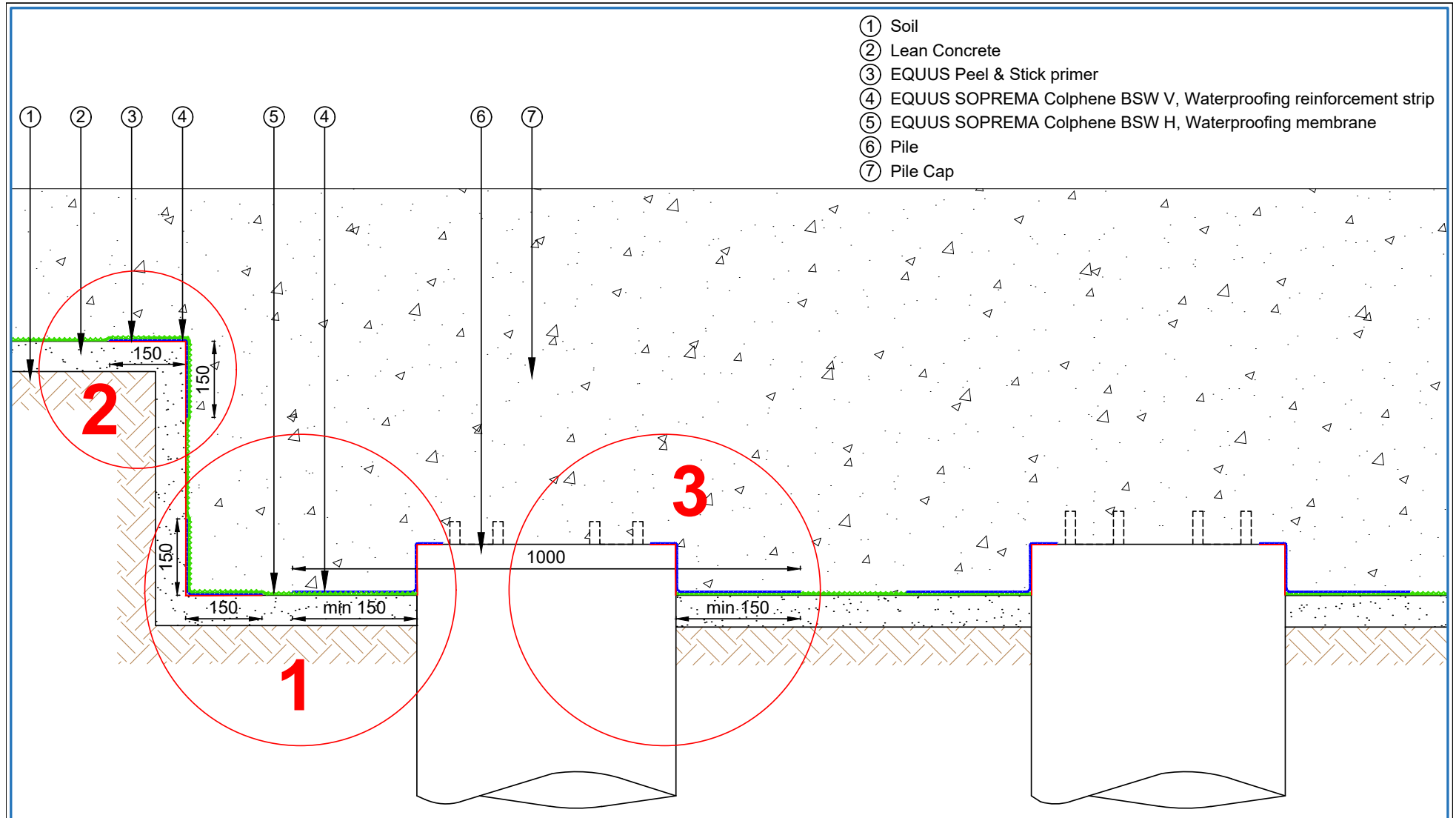
 E-mail : <a href="mailto:admin@equus.co.nz">admin@equus.co.nz</a> Web : <a href="http://www.equus.co.nz">www.equus.co.nz</a>	PROJECT :		Belowgrade Waterproofing Detail - BSW		
	TITLE :		Pipe Penetration through floor slab (Optional) Detail		
	NUMBER :	SBBWS-D2b	SCALE :	1:5	
	DRAWN BY :	NKT	DATE :	10-Aug-2022	
			REVISED :		
<p><small>Equus Waterproof Membrane Details are specially drawn for use by Local Authorities, Building Contractors, Equus Applicators, Architects and design professionals. All details are drawn to assist in the development of project specific details. Details may be modified where necessary to accommodate job specific requirements but must be approved by Equus Industries Ltd. All components must be supplied by Equus Industries Ltd. Equus reserves the right to alter or upgrade details at any time without prior notice.</small></p>					

- ① Soil
- ② Lean Concrete
- ③ EQUUS SOPREMA Colphene BSW H, Waterproofing membrane
- ④ EQUUS SOPREMA Colphene BSW V, Waterproofing reinforcement strip
- ⑤ Slab
- ⑥ EQUUS Peel & Stick primer
- ⑦ Pile



PROJECT :	Belowgrade Waterproofing Detail - BSW		
TITLE :	Pile Cap Detail		
NUMBER :	SBBWS-D3a	SCALE :	1:10
DRAWN BY :	NKT	DATE :	10-Aug-2022
REVISD :			
<p>Equus Waterproof Membrane Details are specially drawn for use by Local Authorities, Building Contractors, Equus Applicators, Architects and design professionals. All details are drawn to assist in the development of project specific details. Details may be modified where necessary to accommodate job specific requirements but must be approved by Equus Industries Ltd. All components must be supplied by Equus Industries Ltd. Equus reserves the right to alter or upgrade details at any time without prior notice.</p>			



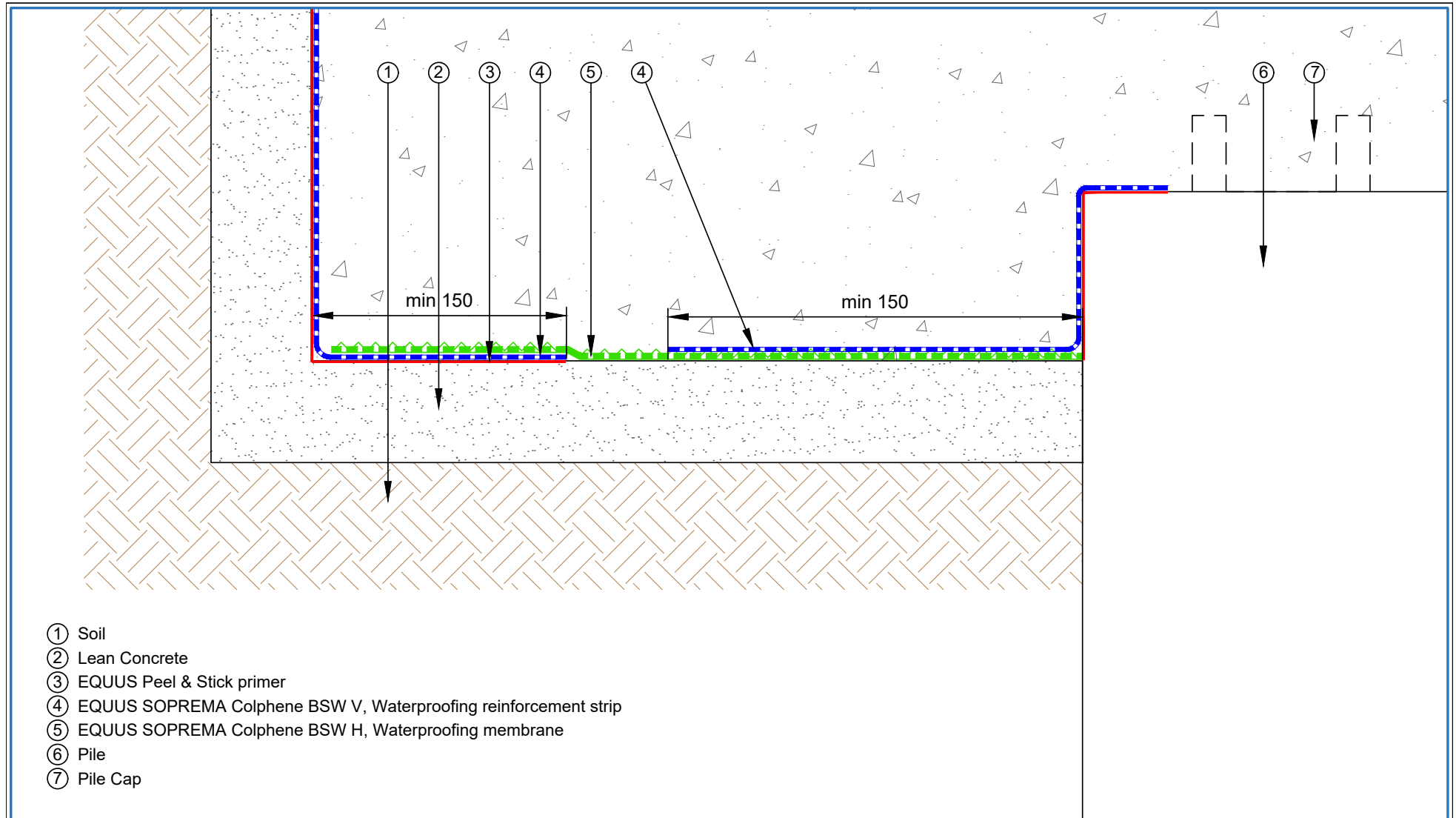


- ① Soil
- ② Lean Concrete
- ③ EQUUS Peel & Stick primer
- ④ EQUUS SOPREMA Colphene BSW V, Waterproofing reinforcement strip
- ⑤ EQUUS SOPREMA Colphene BSW H, Waterproofing membrane
- ⑥ Pile
- ⑦ Pile Cap

E-mail : [admin@equus.co.nz](mailto:admin@equus.co.nz)  
Web : [www.equus.co.nz](http://www.equus.co.nz)

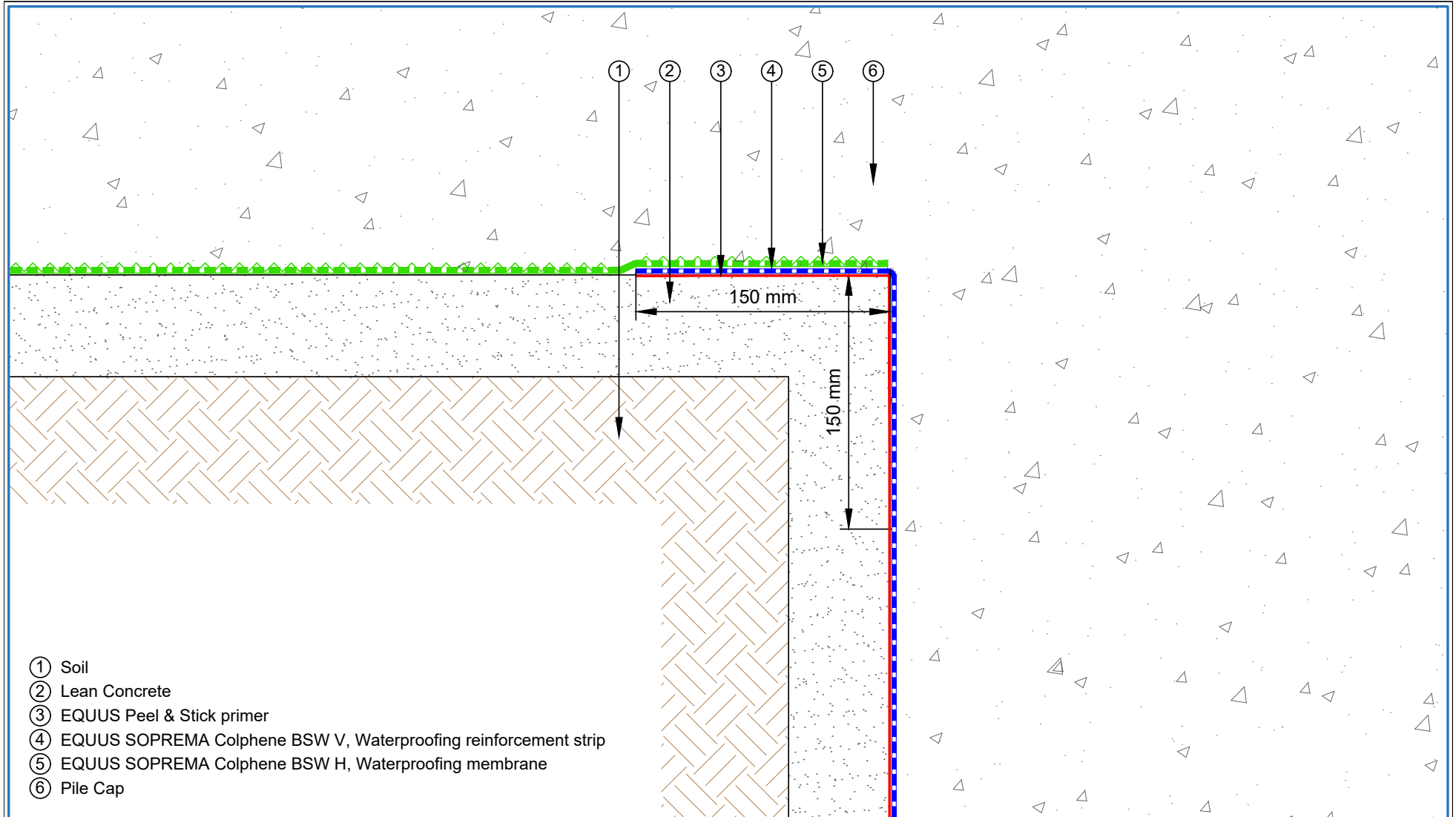
PROJECT :	Belowgrade Waterproofing Detail - BSW		
TITLE :	Pile Cap (Lost Formwork) overview Detail		
NUMBER :	SBBWS-D3b	SCALE :	1:10
DRAWN BY :	NKT	DATE :	10-Aug-2022
		REVISED :	
<p><small>Equus Waterproof Membrane Details are specially drawn for use by Local Authorities, Building Contractors, Equus Applicators, Architects and design professionals. All details are drawn to assist in the development of project specific details. Details may be modified where necessary to accommodate job specific requirements but must be approved by Equus Industries Ltd. All components must be supplied by Equus Industries Ltd. Equus reserves the right to alter or upgrade details at any time without prior notice.</small></p>			

AUTHORISED DISTRIBUTOR  
**SOPREMA**



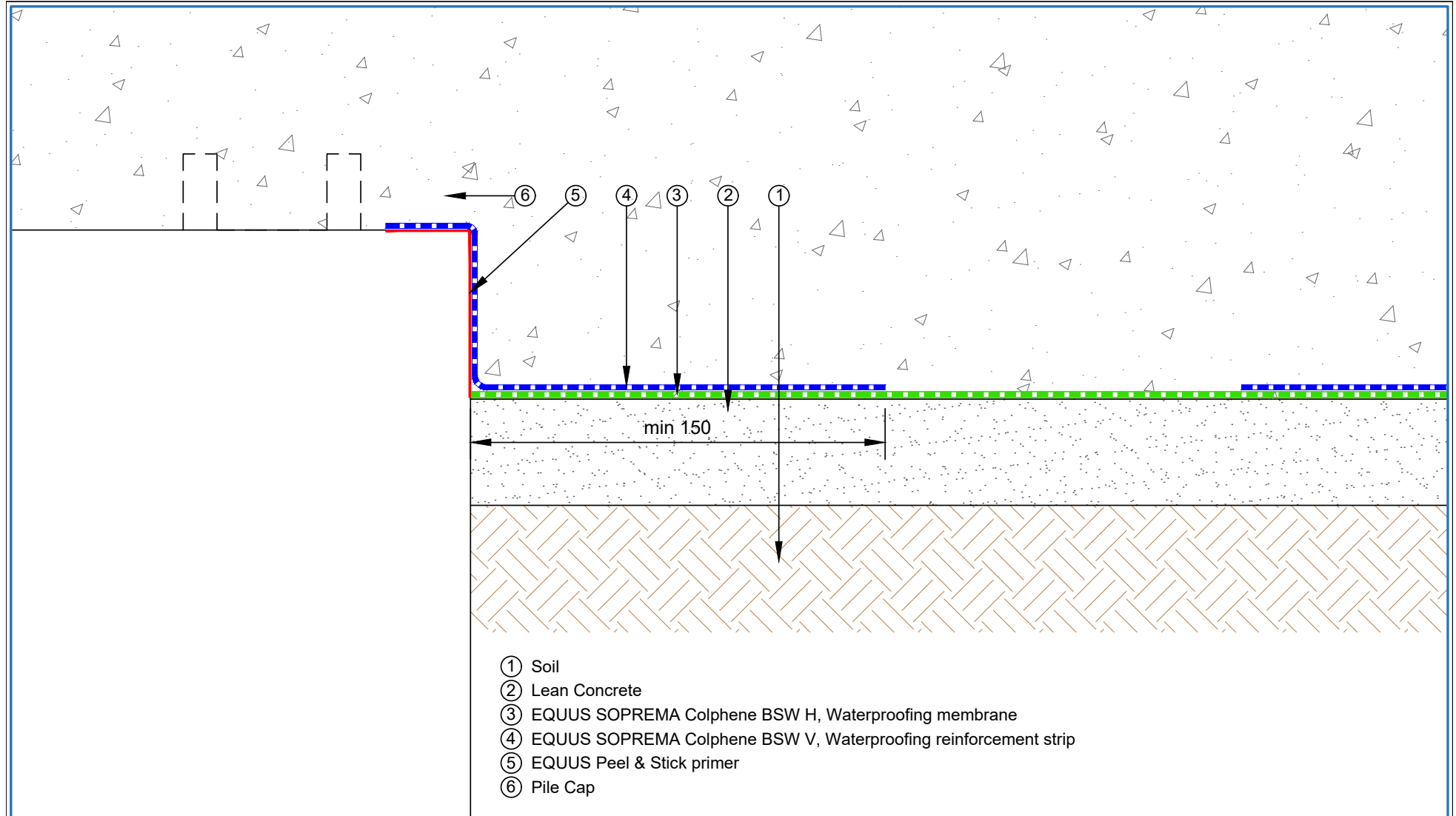
- ① Soil
- ② Lean Concrete
- ③ EQUUS Peel & Stick primer
- ④ EQUUS SOPREMA Colphene BSW V, Waterproofing reinforcement strip
- ⑤ EQUUS SOPREMA Colphene BSW H, Waterproofing membrane
- ⑥ Pile
- ⑦ Pile Cap

 E-mail : <a href="mailto:admin@equus.co.nz">admin@equus.co.nz</a> Web : <a href="http://www.equus.co.nz">www.equus.co.nz</a>	PROJECT :		Belowgrade Waterproofing Detail - BSW		 AUTHORISED DISTRIBUTOR <b>SOPREMA</b>		
	TITLE :		Pile Cap (Lost Formwork) magnifier Detail 1				
	NUMBER :	SBBWS-D3b(1)	SCALE :	1:3			
	DRAWN BY :	NKT	DATE :	10-Aug-2022		REVISED :	
	Equus Waterproof Membrane Details are specially drawn for use by Local Authorities, Building Contractors, Equus Applicators, Architects and design professionals. All details are drawn to assist in the development of project specific details. Details may be modified where necessary to accommodate job specific requirements but must be approved by Equus Industries Ltd. All components must be supplied by Equus Industries Ltd. Equus reserves the right to alter or upgrade details at any time without prior notice.						

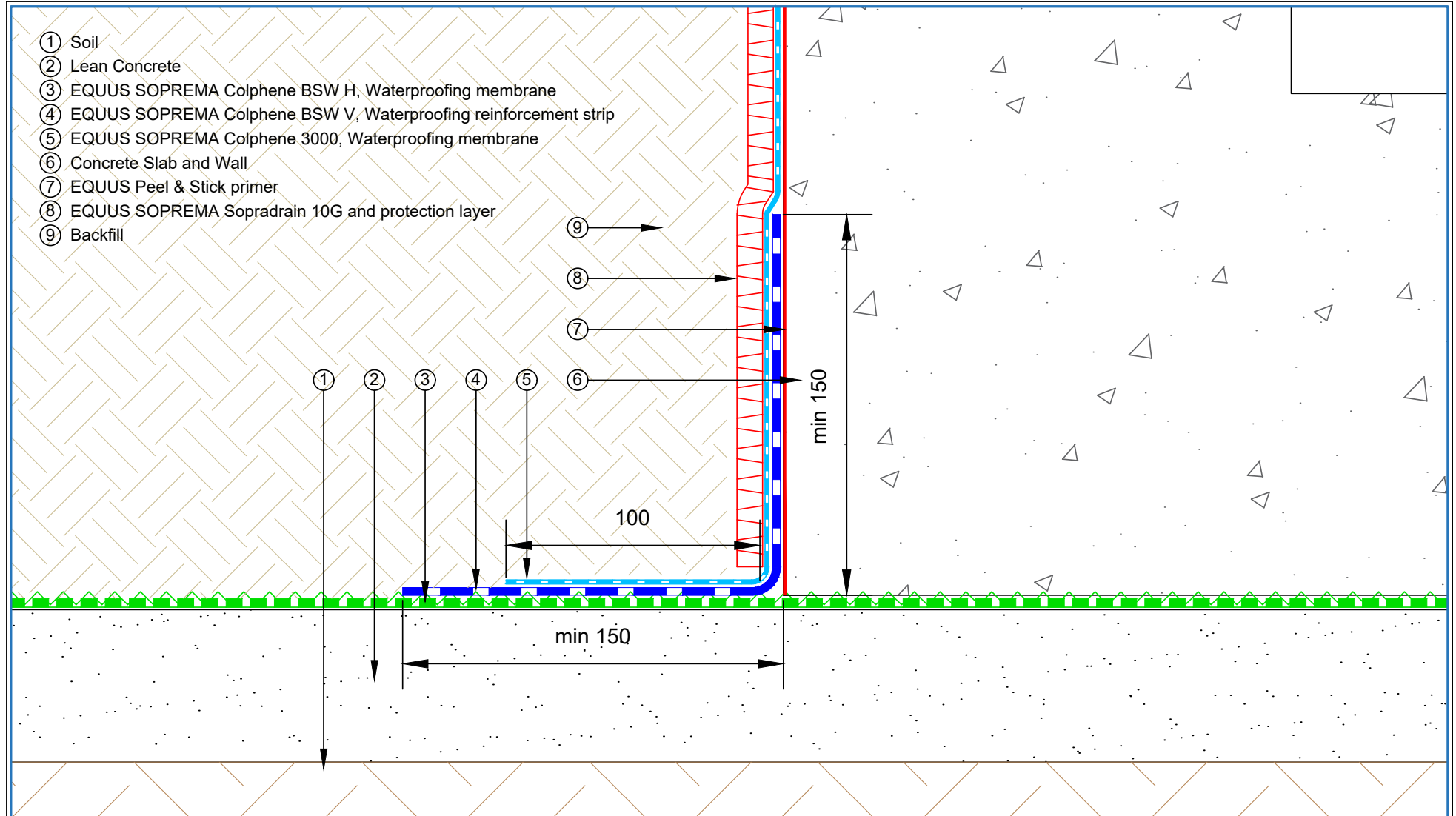


- ① Soil
- ② Lean Concrete
- ③ EQUUS Peel & Stick primer
- ④ EQUUS SOPREMA Colphene BSW V, Waterproofing reinforcement strip
- ⑤ EQUUS SOPREMA Colphene BSW H, Waterproofing membrane
- ⑥ Pile Cap

 E-mail : <a href="mailto:admin@equus.co.nz">admin@equus.co.nz</a> Web : <a href="http://www.equus.co.nz">www.equus.co.nz</a>	PROJECT :		Belowgrade Waterproofing Detail - BSW		 AUTHORISED DISTRIBUTOR <b>SOPREMA</b>	
	TITLE :		Pile Cap (Lost Formwork) magnifier Detail 2			
	NUMBER :		SBBWS-D3b(2)	SCALE :		1:3
	DRAWN BY :	NKT	DATE :	10-Aug-2022		REVISED :
	<p>Equus Waterproof Membrane Details are specially drawn for use by Local Authorities, Building Contractors, Equus Applicators, Architects and design professionals. All details are drawn to assist in the development of project specific details. Details may be modified where necessary to accommodate job specific requirements but must be approved by Equus Industries Ltd. All components must be supplied by Equus Industries Ltd. Equus reserves the right to alter or upgrade details at any time without prior notice.</p>					

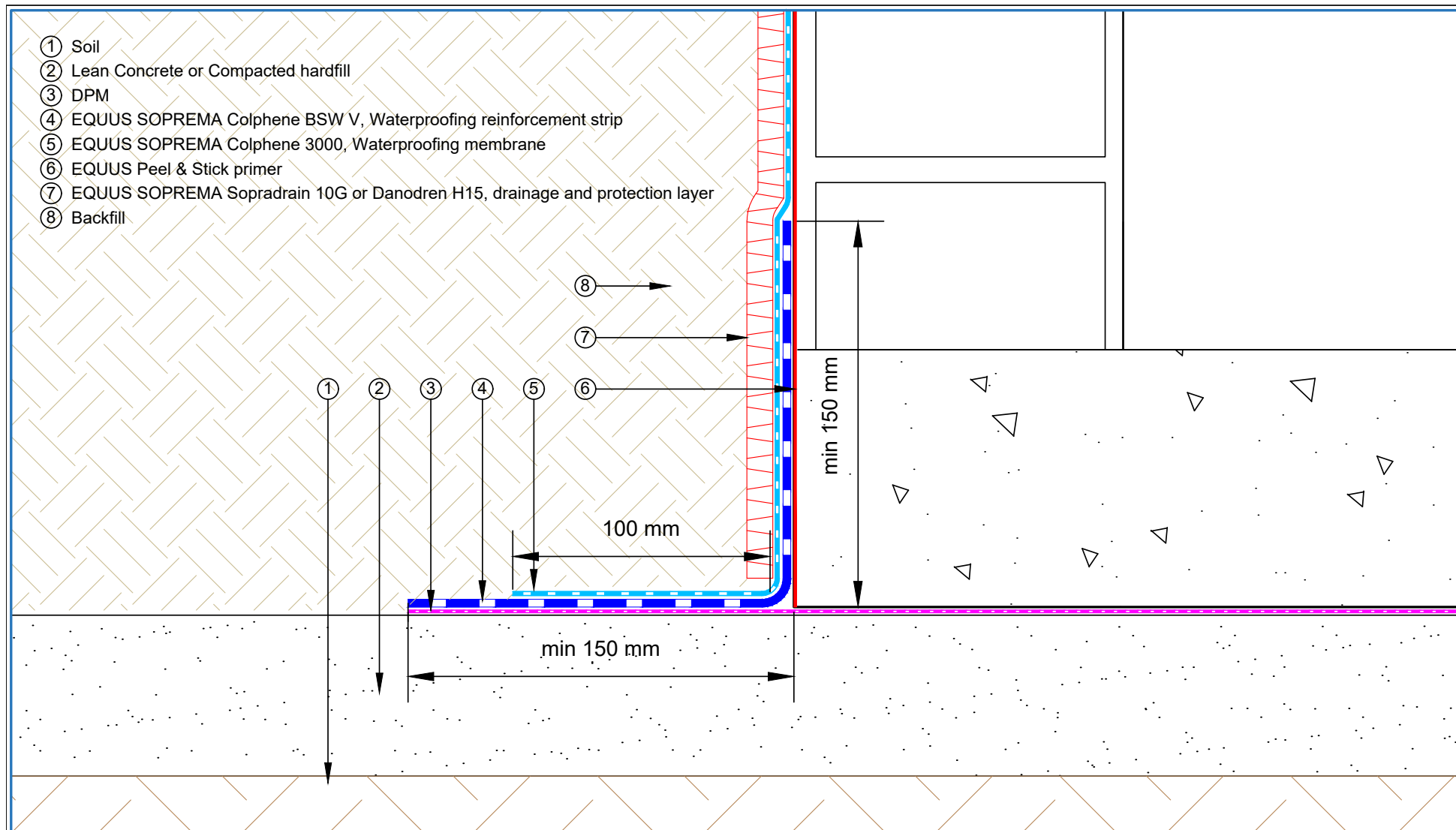


 E-mail : <a href="mailto:admin@equus.co.nz">admin@equus.co.nz</a> Web : <a href="http://www.equus.co.nz">www.equus.co.nz</a>	PROJECT :		Belowgrade Waterproofing Detail - BSW		 AUTHORISED DISTRIBUTOR <b>SOPREMA</b>		
	TITLE :		Pile Cap (Lost Formwork) magnifier Detail 3				
	NUMBER :	SBBWS-D3b(3)	SCALE :	1:3			
	DRAWN BY :	NKT	DATE :	10-Aug-2022		REVISED :	
	Equus Waterproof Membrane Details are specially drawn for use by Local Authorities, Building Contractors, Equus Applicators, Architects and design professionals. All details are drawn to assist in the development of project specific details. Details may be modified where necessary to accommodate job specific requirements but must be approved by Equus Industries Ltd. All components must be supplied by Equus Industries Ltd. Equus reserves the right to alter or upgrade details at any time without prior notice.						

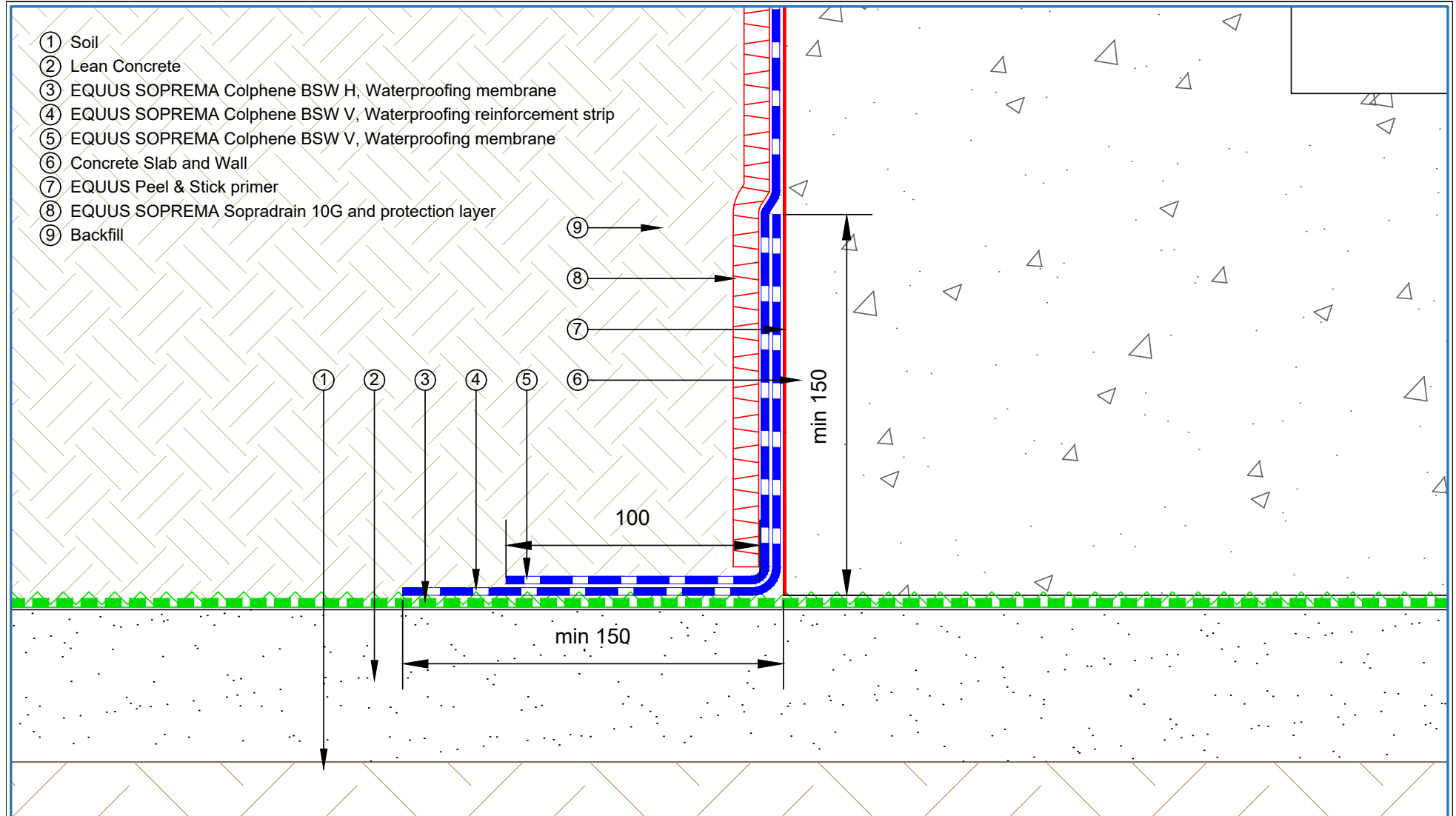


PROJECT :	Belowgrade Waterproofing Detail - BSW		
TITLE :	Floor Wall Connection Detail		
NUMBER :	SBBWS-D5a	SCALE :	1:2
DRAWN BY :	NKT	DATE :	10-Aug-2022
REVISED :			
<p>Equus Waterproof Membrane Details are specially drawn for use by Local Authorities, Building Contractors, Equus Applicators, Architects and design professionals. All details are drawn to assist in the development of project specific details. Details may be modified where necessary to accommodate job specific requirements but must be approved by Equus Industries Ltd. All components must be supplied by Equus Industries Ltd. Equus reserves the right to alter or upgrade details at any time without prior notice.</p>			





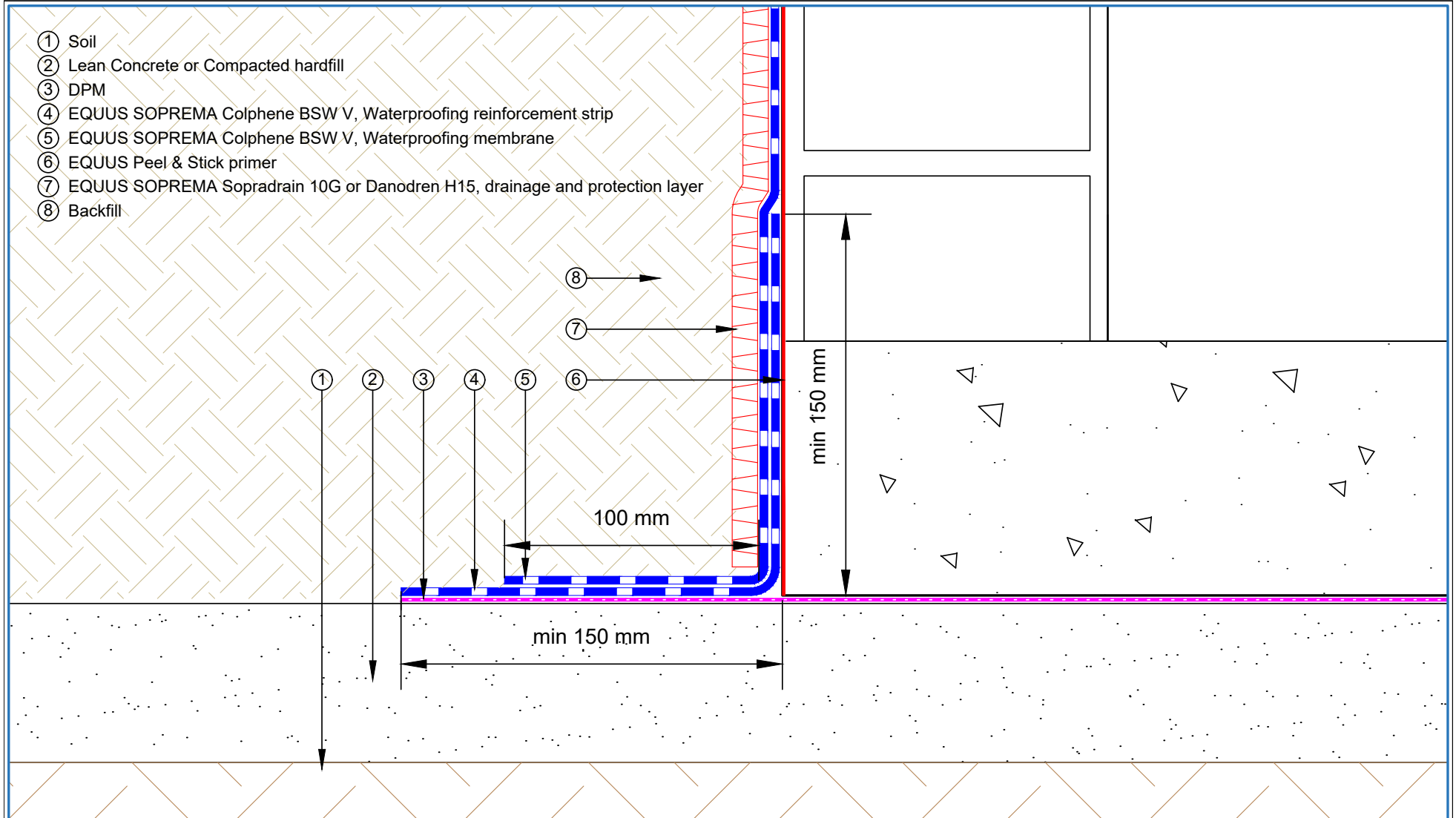
<p>E-mail : <a href="mailto:admin@equus.co.nz">admin@equus.co.nz</a> Web : <a href="http://www.equus.co.nz">www.equus.co.nz</a></p>	PROJECT :	Belowgrade Waterproofing Detail - BSW		
	TITLE :	Floor Wall Connection to DPM Detail		
	NUMBER :	SBBWS-D5b	SCALE :	1:2
	DRAWN BY :	NKT	DATE :	10-Aug-2022
			REVISED :	
<p>Equus Waterproof Membrane Details are specially drawn for use by Local Authorities, Building Contractors, Equus Applicators, Architects and design professionals. All details are drawn to assist in the development of project specific details. Details may be modified where necessary to accommodate job specific requirements but must be approved by Equus Industries Ltd. All components must be supplied by Equus Industries Ltd. Equus reserves the right to alter or upgrade details at any time without prior notice.</p>				



- ① Soil
- ② Lean Concrete
- ③ EQUUS SOPREMA Colphene BSW H, Waterproofing membrane
- ④ EQUUS SOPREMA Colphene BSW V, Waterproofing reinforcement strip
- ⑤ EQUUS SOPREMA Colphene BSW V, Waterproofing membrane
- ⑥ Concrete Slab and Wall
- ⑦ EQUUS Peel & Stick primer
- ⑧ EQUUS SOPREMA Sopradrain 10G and protection layer
- ⑨ Backfill

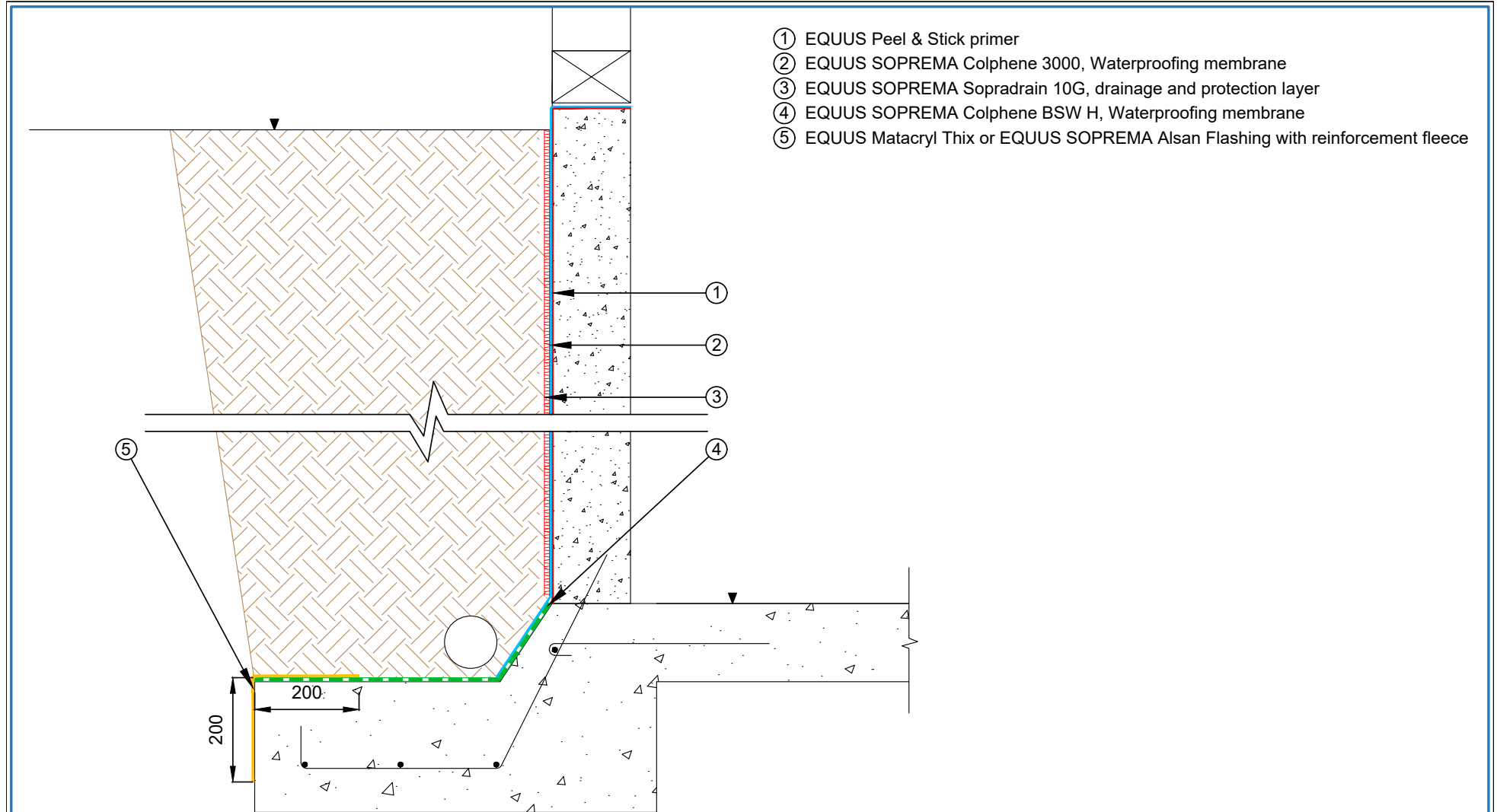
 E-mail : <a href="mailto:admin@equus.co.nz">admin@equus.co.nz</a> Web : <a href="http://www.equus.co.nz">www.equus.co.nz</a>	PROJECT :		Belowgrade Waterproofing Detail - BSW		
	TITLE :		Floor Wall Connection Detail (Optional)		
	NUMBER :		SBBWS-D5c	SCALE :	1:2
	DRAWN BY :		NKT	DATE :	04-May-2023
				REVISED :	
<p><small>Equus Waterproof Membrane Details are specially drawn for use by Local Authorities, Building Contractors, Equus Applicators, Architects and design professionals. All details are drawn to assist in the development of project specific details. Details may be modified where necessary to accommodate job specific requirements but must be approved by Equus Industries Ltd. All components must be supplied by Equus Industries Ltd. Equus reserves the right to alter or upgrade details at any time without prior notice.</small></p>					





<p>E-mail : <a href="mailto:admin@equus.co.nz">admin@equus.co.nz</a> Web : <a href="http://www.equus.co.nz">www.equus.co.nz</a></p>	PROJECT :		Belowgrade Waterproofing Detail - BSW		<p>AUTHORISED DISTRIBUTOR <b>SOPREMA</b></p>
	TITLE :		Floor Wall Connection to DPM Detail (Optional)		
	NUMBER :	SBBWS-D5d	SCALE :	1:2	
	DRAWN BY :	NKT	DATE :	04-May-2023	
	REVISD :				
<p>Equus Waterproof Membrane Details are specially drawn for use by Local Authorities, Building Contractors, Equus Applicators, Architects and design professionals. All details are drawn to assist in the development of project specific details. Details may be modified where necessary to accommodate job specific requirements but must be approved by Equus Industries Ltd. All components must be supplied by Equus Industries Ltd. Equus reserves the right to alter or upgrade details at any time without prior notice.</p>					



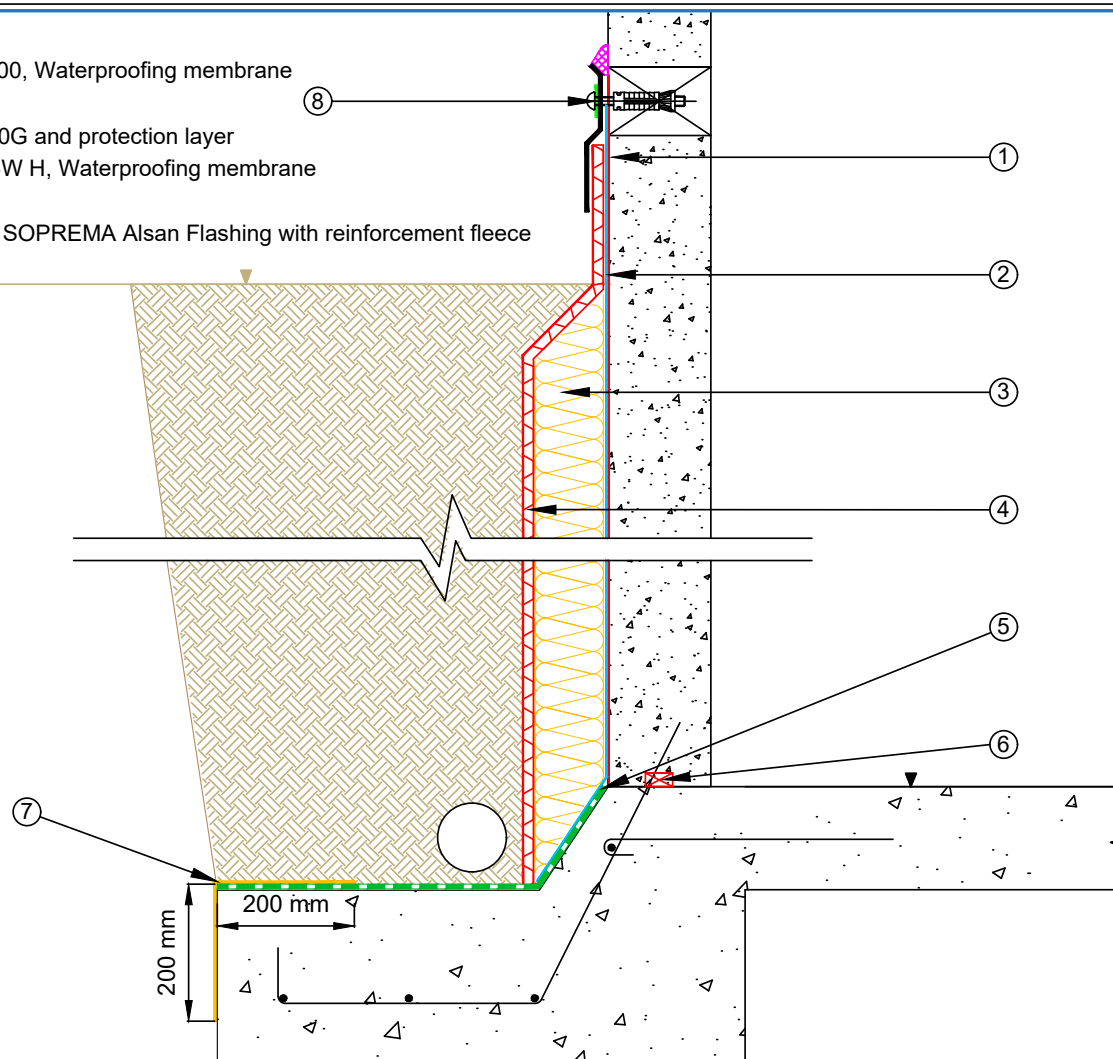


- ① EQUUS Peel & Stick primer
- ② EQUUS SOPREMA Colphene 3000, Waterproofing membrane
- ③ EQUUS SOPREMA Sopradrain 10G, drainage and protection layer
- ④ EQUUS SOPREMA Colphene BSW H, Waterproofing membrane
- ⑤ EQUUS Matacryl Thix or EQUUS SOPREMA Alsan Flashing with reinforcement fleece

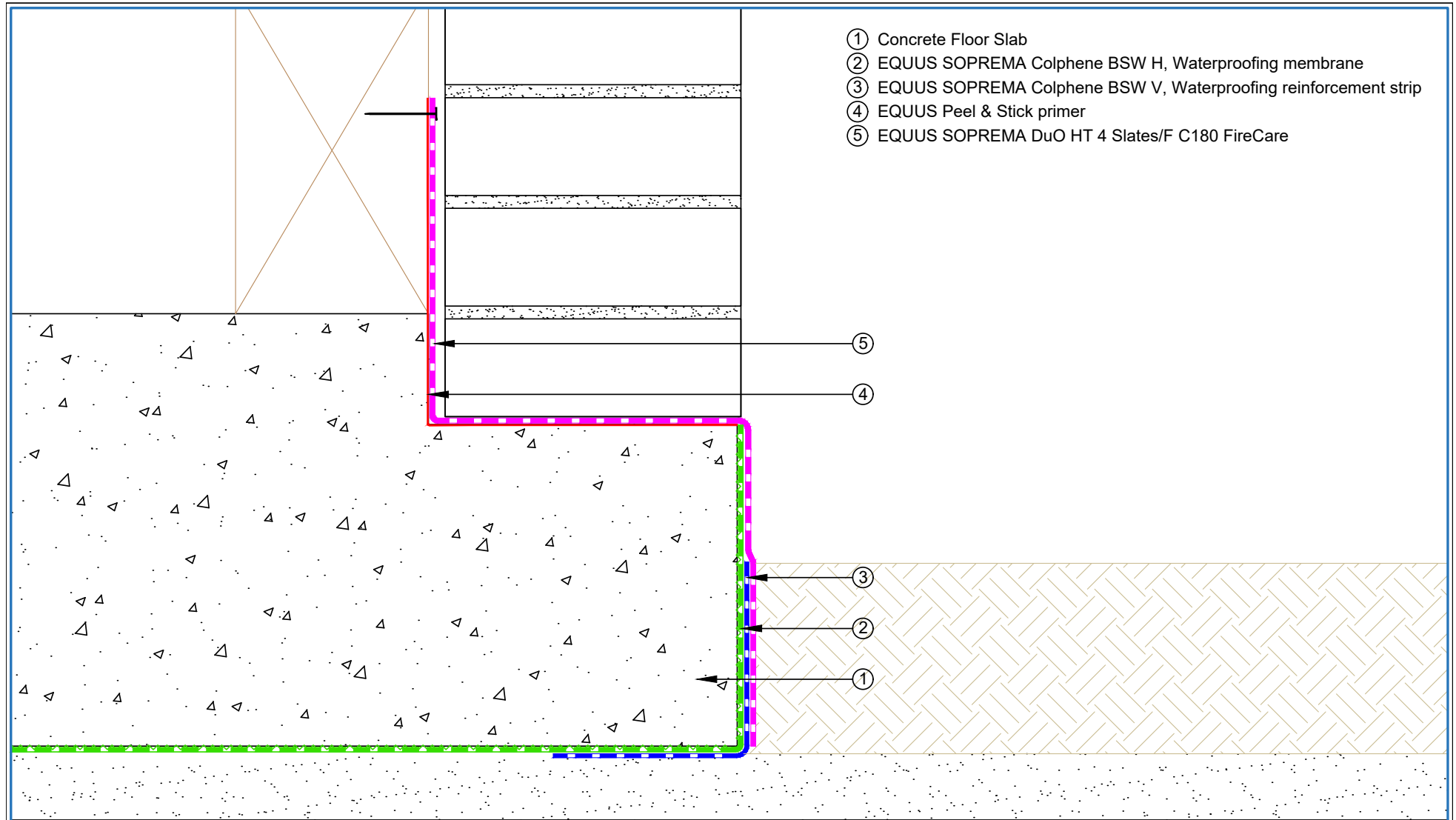
Note : All dimensions are in millimeters

 E-mail : <a href="mailto:admin@equus.co.nz">admin@equus.co.nz</a> Web : <a href="http://www.equus.co.nz">www.equus.co.nz</a>	PROJECT :		Belowgrade Waterproofing Detail - BSW		 AUTHORISED DISTRIBUTOR <b>SOPREMA</b>	
	TITLE :		Wall and Footing Detail			
	NUMBER :		SBBWS-D6a	SCALE :		1:10
	DRAWN BY :	NKT	DATE :	10-Aug-2022		REVISED :
	Equus Waterproof Membrane Details are specially drawn for use by Local Authorities, Building Contractors, Equus Applicators, Architects and design professionals. All details are drawn to assist in the development of project specific details. Details may be modified where necessary to accommodate job specific requirements but must be approved by Equus Industries Ltd. All components must be supplied by Equus Industries Ltd. Equus reserves the right to alter or upgrade details at any time without prior notice.					

- ① EQUUS Peel & Stick Primer
- ② EQUUS SOPREMA Colphene 3000, Waterproofing membrane
- ③ XPS insulation
- ④ EQUUS SOPREMA Sopradrain 10G and protection layer
- ⑤ EQUUS SOPREMA Colphene BSW H, Waterproofing membrane
- ⑥ EQUUS Waterstop
- ⑦ EQUUS Matacyl Thix or EQUUS SOPREMA Alsan Flashing with reinforcement fleece
- ⑧ EQUUS Termination Profile

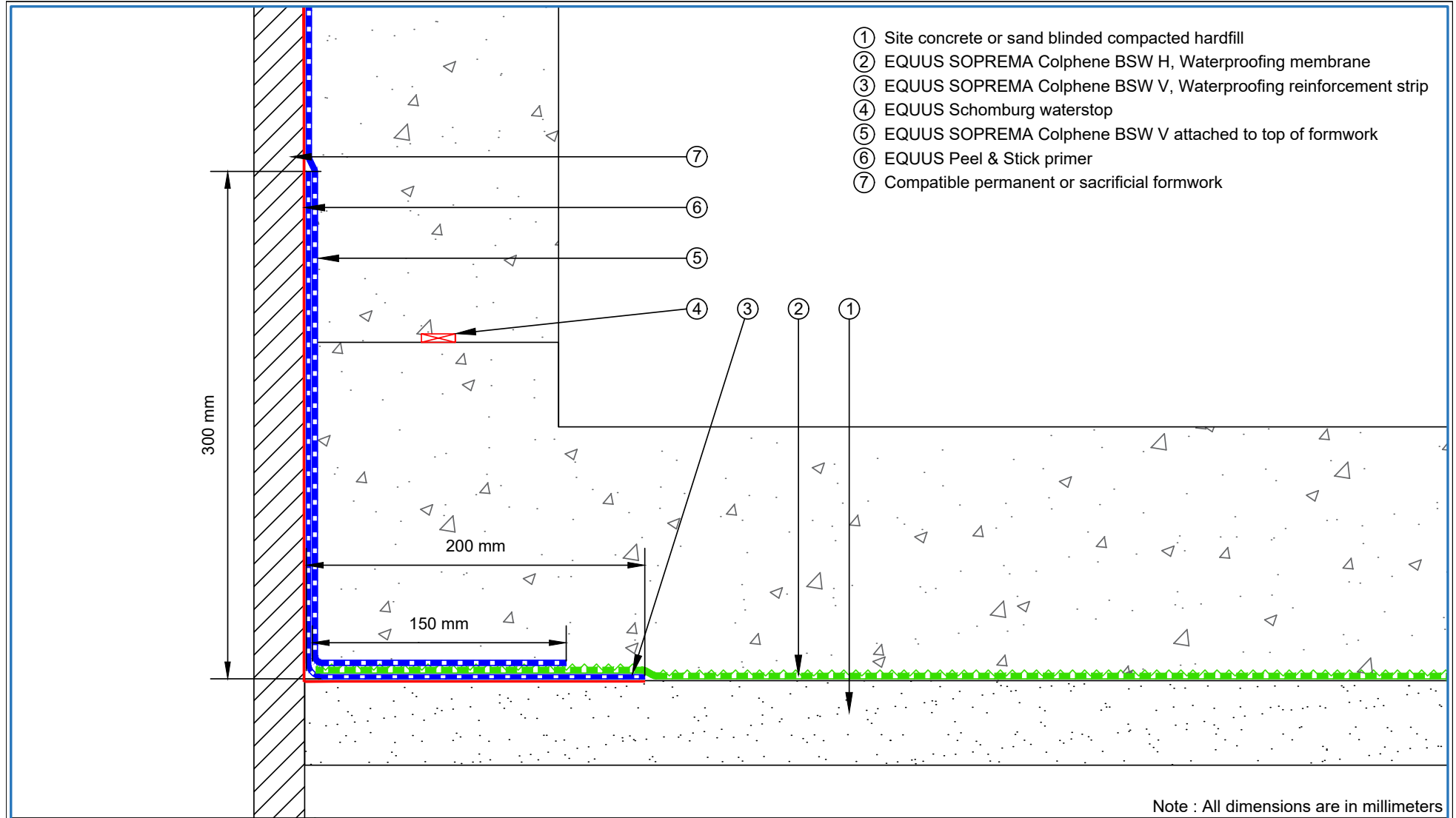


PROJECT :	Belowgrade Waterproofing Detail - BSW		
TITLE :	Wall and Footing Detail (Optional)		
NUMBER :	SBBWS-D6b	SCALE :	1:10
DRAWN BY :	NKT	DATE :	10-Aug-2022
		REVISED :	
<p>Equus Waterproof Membrane Details are specially drawn for use by Local Authorities, Building Contractors, Equus Applicators, Architects and design professionals. All details are drawn to assist in the development of project specific details. Details may be modified where necessary to accommodate job specific requirements but must be approved by Equus Industries Ltd. All components must be supplied by Equus Industries Ltd. Equus reserves the right to alter or upgrade details at any time without prior notice.</p>			



- ① Concrete Floor Slab
- ② EQUUS SOPREMA Colphene BSW H, Waterproofing membrane
- ③ EQUUS SOPREMA Colphene BSW V, Waterproofing reinforcement strip
- ④ EQUUS Peel & Stick primer
- ⑤ EQUUS SOPREMA DuO HT 4 Slates/F C180 FireCare

 E-mail : <a href="mailto:admin@equus.co.nz">admin@equus.co.nz</a> Web : <a href="http://www.equus.co.nz">www.equus.co.nz</a>	PROJECT :		Belowgrade Waterproofing Detail - BSW		 AUTHORISED DISTRIBUTOR <b>SOPREMA</b>
	TITLE :		Floor Slab waterproofing Detail		
	NUMBER :	SBBWS-D7a	SCALE :	1:4	
	DRAWN BY :	NKT	DATE :	10-Aug-2022	
	REVISD :				
Equus Waterproof Membrane Details are specially drawn for use by Local Authorities, Building Contractors, Equus Applicators, Architects and design professionals. All details are drawn to assist in the development of project specific details. Details may be modified where necessary to accommodate job specific requirements but must be approved by Equus Industries Ltd. All components must be supplied by Equus Industries Ltd. Equus reserves the right to alter or upgrade details at any time without prior notice.					



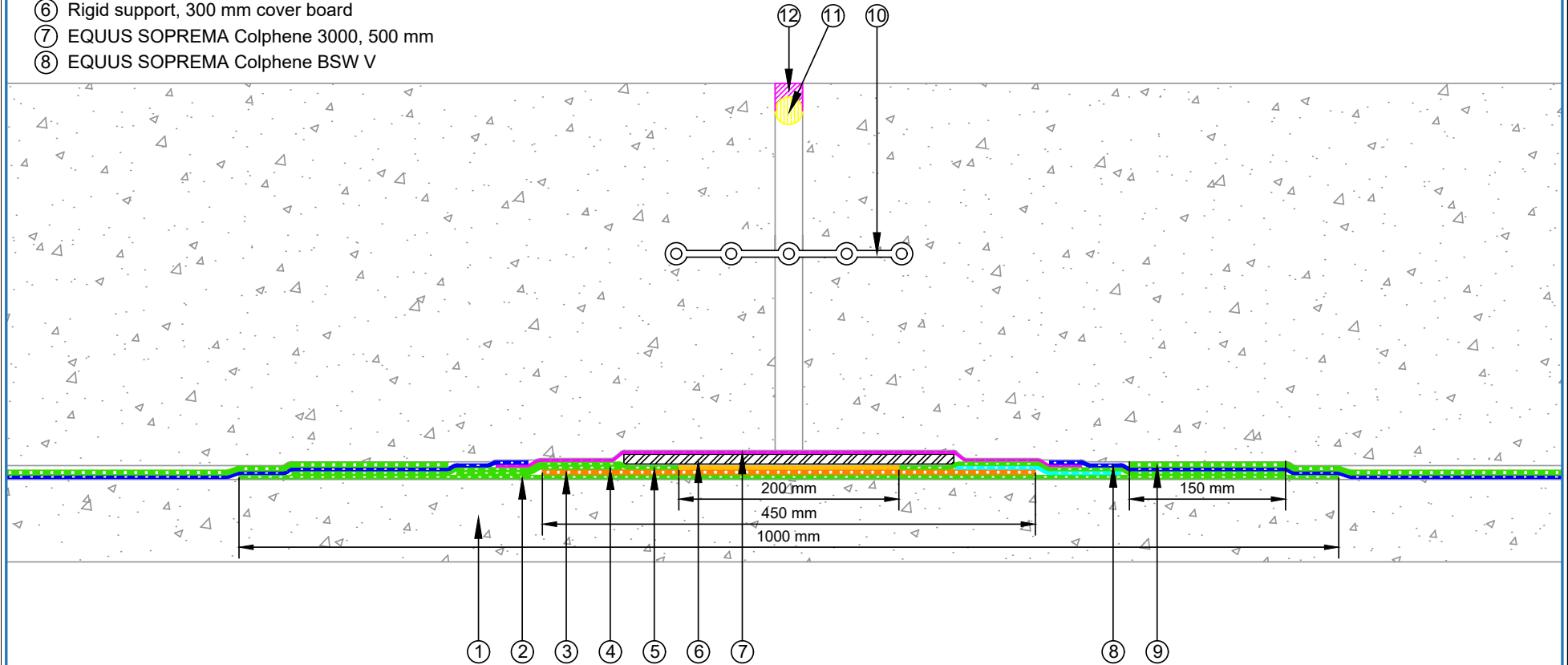
Note : All dimensions are in millimeters

E-mail : [admin@equus.co.nz](mailto:admin@equus.co.nz)  
Web : [www.equus.co.nz](http://www.equus.co.nz)

PROJECT :	Belowgrade Waterproofing Detail - BSW		
TITLE :	Turn Up detail to Compatible permanent formwork Detail		
NUMBER :	SBBWS-D8a	SCALE :	1:3
DRAWN BY :	NKT	DATE :	10-Aug-2022
		REVISED :	
<p><small>Equus Waterproof Membrane Details are specially drawn for use by Local Authorities, Building Contractors, Equus Applicators, Architects and design professionals. All details are drawn to assist in the development of project specific details. Details may be modified where necessary to accommodate job specific requirements but must be approved by Equus Industries Ltd. All components must be supplied by Equus Industries Ltd. Equus reserves the right to alter or upgrade details at any time without prior notice.</small></p>			

AUTHORISED DISTRIBUTOR  
**SOPREMA**

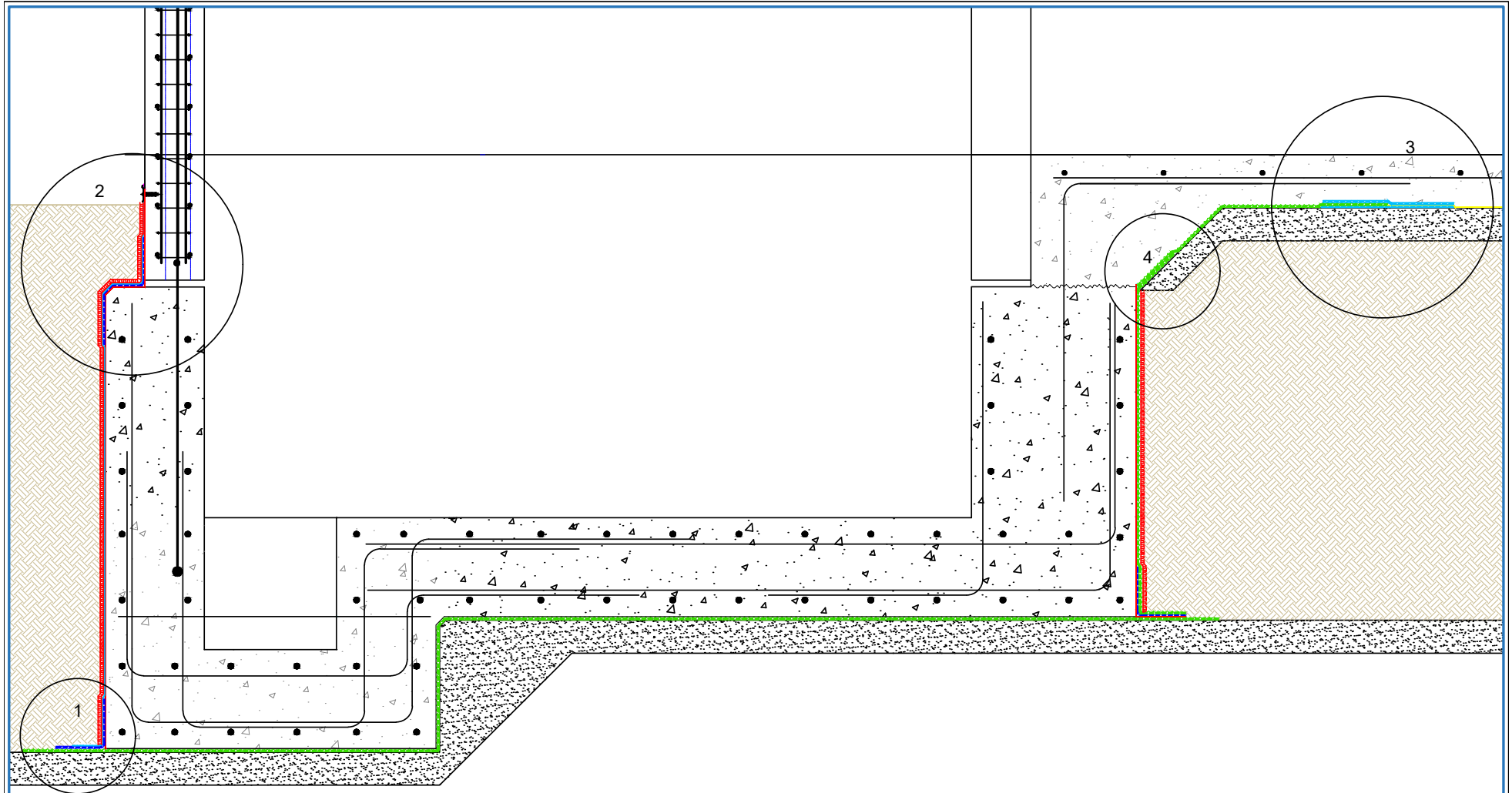
- |   |  |
|---|--|
| ① Site concrete   | ⑨ EQUUS SOPREMA Colphene BSW H, Waterproofing membrane |
| ② EQUUS SOPREMA Colphene BSW H, 1st layer (heat-welded)   | ⑩ Waterstop  |
| ③ EQUUS SOPREMA SOPRAJOINT (laps heat-welded)   | ⑪ Rod foam   |
| ④ EQUUS SOPREMA Colphene BSW H, (reinforcement, heat-welded)<br>Minimum 150 mm reinforcement strip centered on the edge of the flange | ⑫ EQUUS Alsan Mastic 2200 sealant                      |
| ⑤ EQUUS SOPREMA Colphene BSW H, 2nd layer (heat-welded)   |  |
| ⑥ Rigid support, 300 mm cover board   |  |
| ⑦ EQUUS SOPREMA Colphene 3000, 500 mm   |  |
| ⑧ EQUUS SOPREMA Colphene BSW V  |  |



E-mail : [admin@equus.co.nz](mailto:admin@equus.co.nz)  
Web : [www.equus.co.nz](http://www.equus.co.nz)

PROJECT :	Belowgrade Waterproofing Detail - BSW		
TITLE :	Seismic joint detail		
NUMBER :	SBBWS-D9a	SCALE :	1:5
DRAWN BY :	NKT	DATE :	10-Aug-2022
<small>Equus Waterproof Membrane Details are specially drawn for use by Local Authorities, Building Contractors, Equus Applicators, Architects and design professionals. All details are drawn to assist in the development of project specific details. Details may be modified where necessary to accommodate job specific requirements but must be approved by Equus Industries Ltd. All components must be supplied by Equus Industries Ltd. Equus reserves the right to alter or upgrade details at any time without prior notice.</small>			

AUTHORISED DISTRIBUTOR  
**SOPREMA**

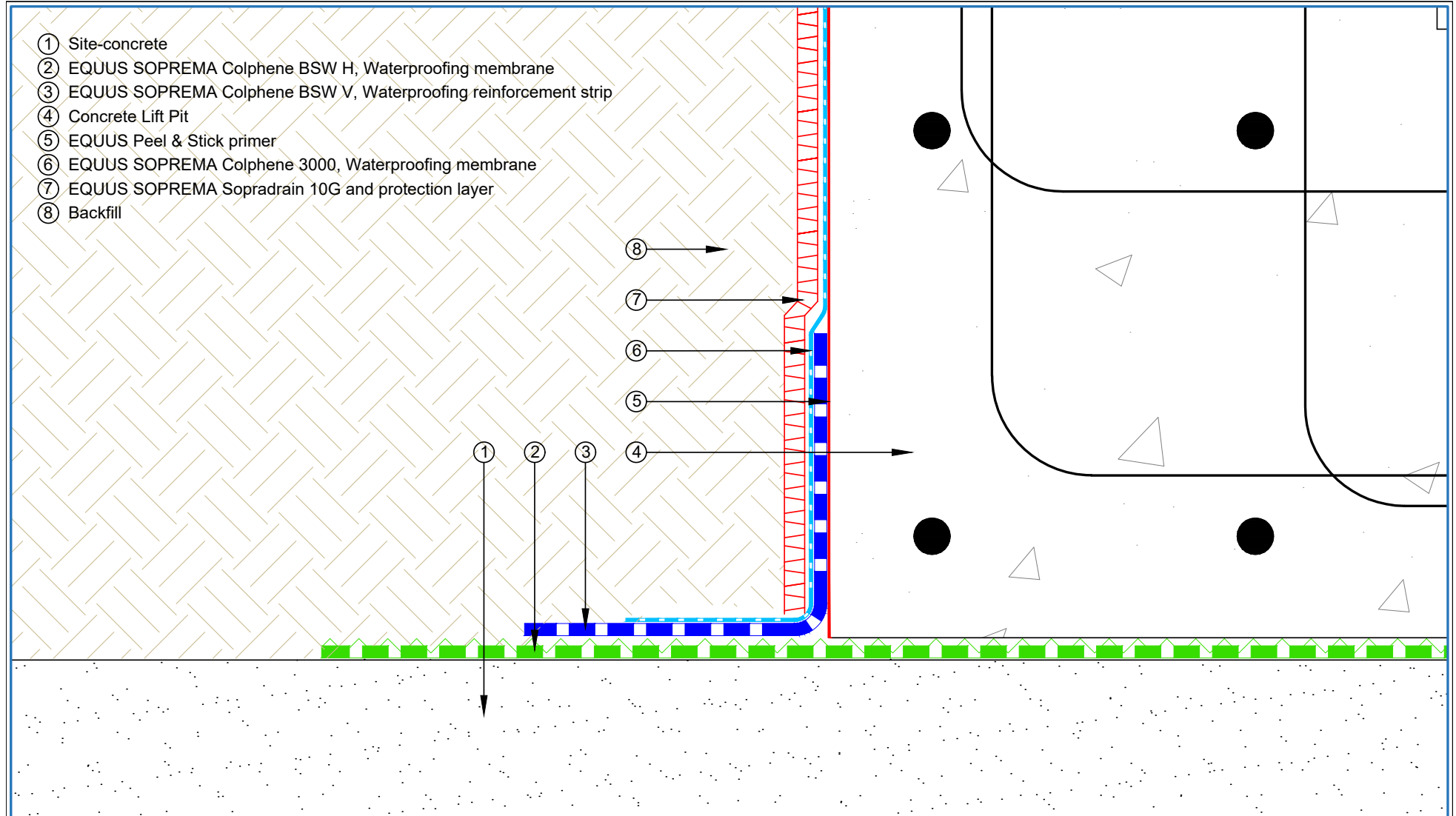


E-mail : [admin@equus.co.nz](mailto:admin@equus.co.nz)  
Web : [www.equus.co.nz](http://www.equus.co.nz)

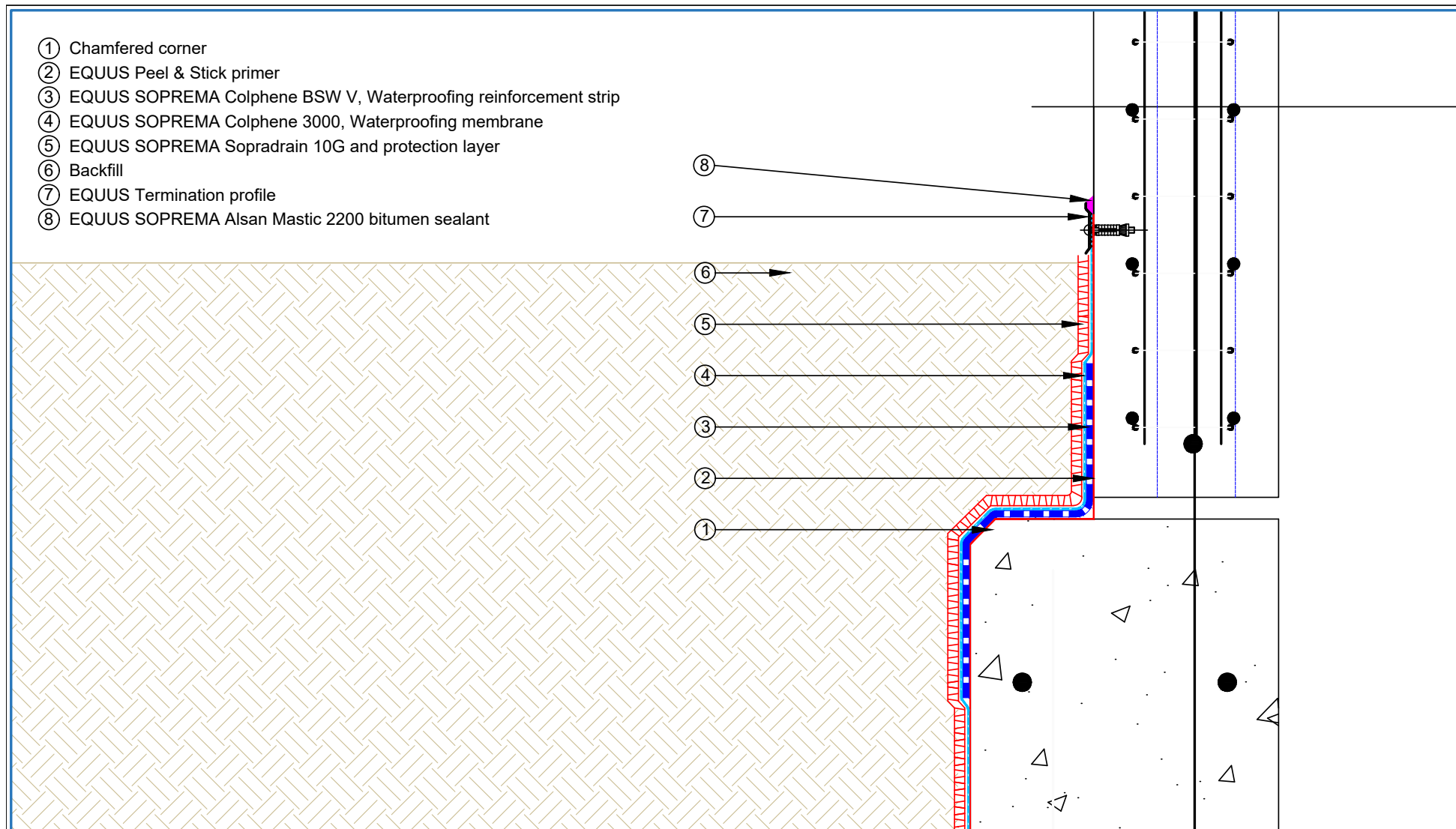
PROJECT :	Belowgrade Waterproofing Detail - BSW		
TITLE :	Lift Pit Detail - Lift Pit Waterproofing Detail - Overview		
NUMBER :	SBBWS-D10a	SCALE :	1:16
DRAWN BY :	NKT	DATE :	10-Aug-2022
		REVISED :	
<p>Equus Waterproof Membrane Details are specially drawn for use by Local Authorities, Building Contractors, Equus Applicators, Architects and design professionals. All details are drawn to assist in the development of project specific details. Details may be modified where necessary to accommodate job specific requirements but must be approved by Equus Industries Ltd. All components must be supplied by Equus Industries Ltd. Equus reserves the right to alter or upgrade details at any time without prior notice.</p>			

AUTHORISED DISTRIBUTOR  
**SOPREMA**





<p>E-mail : <a href="mailto:admin@equus.co.nz">admin@equus.co.nz</a> Web : <a href="http://www.equus.co.nz">www.equus.co.nz</a></p>	PROJECT :	Belowgrade Waterproofing Detail - BSW		
	TITLE :	Lift Pit Detail - Floor Wall connection		
	NUMBER :	SBBWS-D10a(1)	SCALE :	1:3
	DRAWN BY :	NKT	DATE :	10-Aug-2022
			REVISED :	
<p>Equus Waterproof Membrane Details are specially drawn for use by Local Authorities, Building Contractors, Equus Applicators, Architects and design professionals. All details are drawn to assist in the development of project specific details. Details may be modified where necessary to accommodate job specific requirements but must be approved by Equus Industries Ltd. All components must be supplied by Equus Industries Ltd. Equus reserves the right to alter or upgrade details at any time without prior notice.</p>				
				<p>AUTHORISED DISTRIBUTOR <b>SOPREMA</b></p>



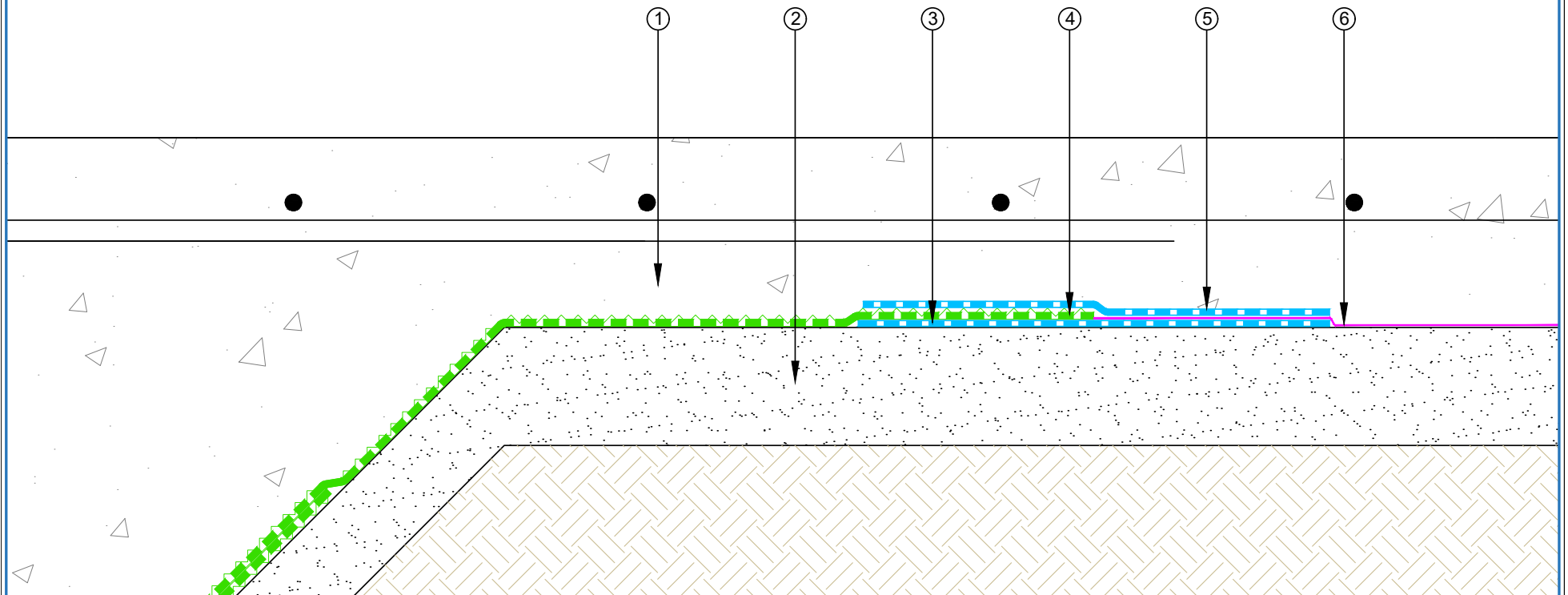
E-mail : [admin@equus.co.nz](mailto:admin@equus.co.nz)  
Web : [www.equus.co.nz](http://www.equus.co.nz)

PROJECT :	Belowgrade Waterproofing Detail - BSW		
TITLE :	Lift Pit Detail - Membrane Termination		
NUMBER :	SBBWS-D10a(2)	SCALE :	1:5
DRAWN BY :	NKT	DATE :	10-Aug-2022
REVISED :			
<p>Equus Waterproof Membrane Details are specially drawn for use by Local Authorities, Building Contractors, Equus Applicators, Architects and design professionals. All details are drawn to assist in the development of project specific details. Details may be modified where necessary to accommodate job specific requirements but must be approved by Equus Industries Ltd. All components must be supplied by Equus Industries Ltd. Equus reserves the right to alter or upgrade details at any time without prior notice.</p>			





- ① Concrete Floor
- ② Site-concrete
- ③ EQUUS SOPREMA Self-adhesive membrane Colphene 3000, positioned upside down
- ④ EQUUS SOPREMA Colphene BSW H, Waterproofing membrane
- ⑤ EQUUS SOPREMA Self-adhesive membrane Colphene 3000
- ⑥ DPM

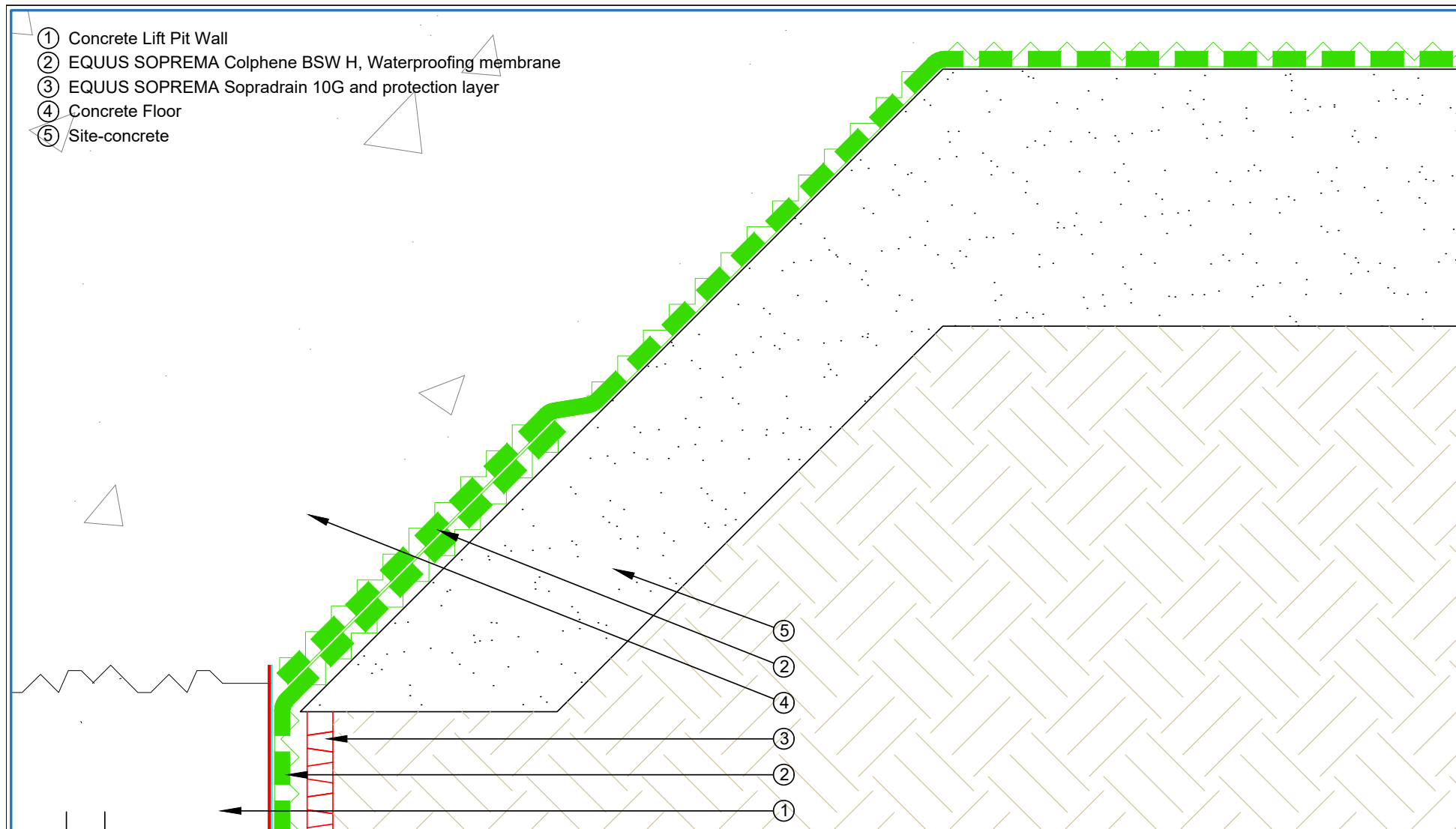


E-mail : [admin@equus.co.nz](mailto:admin@equus.co.nz)  
Web : [www.equus.co.nz](http://www.equus.co.nz)

PROJECT :	Belowgrade Waterproofing Detail - BSW		
TITLE :	Lift Pit Detail - Membrane and DPM		
NUMBER :	SBBWS-D10a(3)	SCALE :	1:5
DRAWN BY :	NKT	DATE :	10-Aug-2022
		REVISED :	

Equus Waterproof Membrane Details are specially drawn for use by Local Authorities, Building Contractors, Equus Applicators, Architects and design professionals. All details are drawn to assist in the development of project specific details. Details may be modified where necessary to accommodate job specific requirements but must be approved by Equus Industries Ltd. All components must be supplied by Equus Industries Ltd. Equus reserves the right to alter or upgrade details at any time without prior notice.



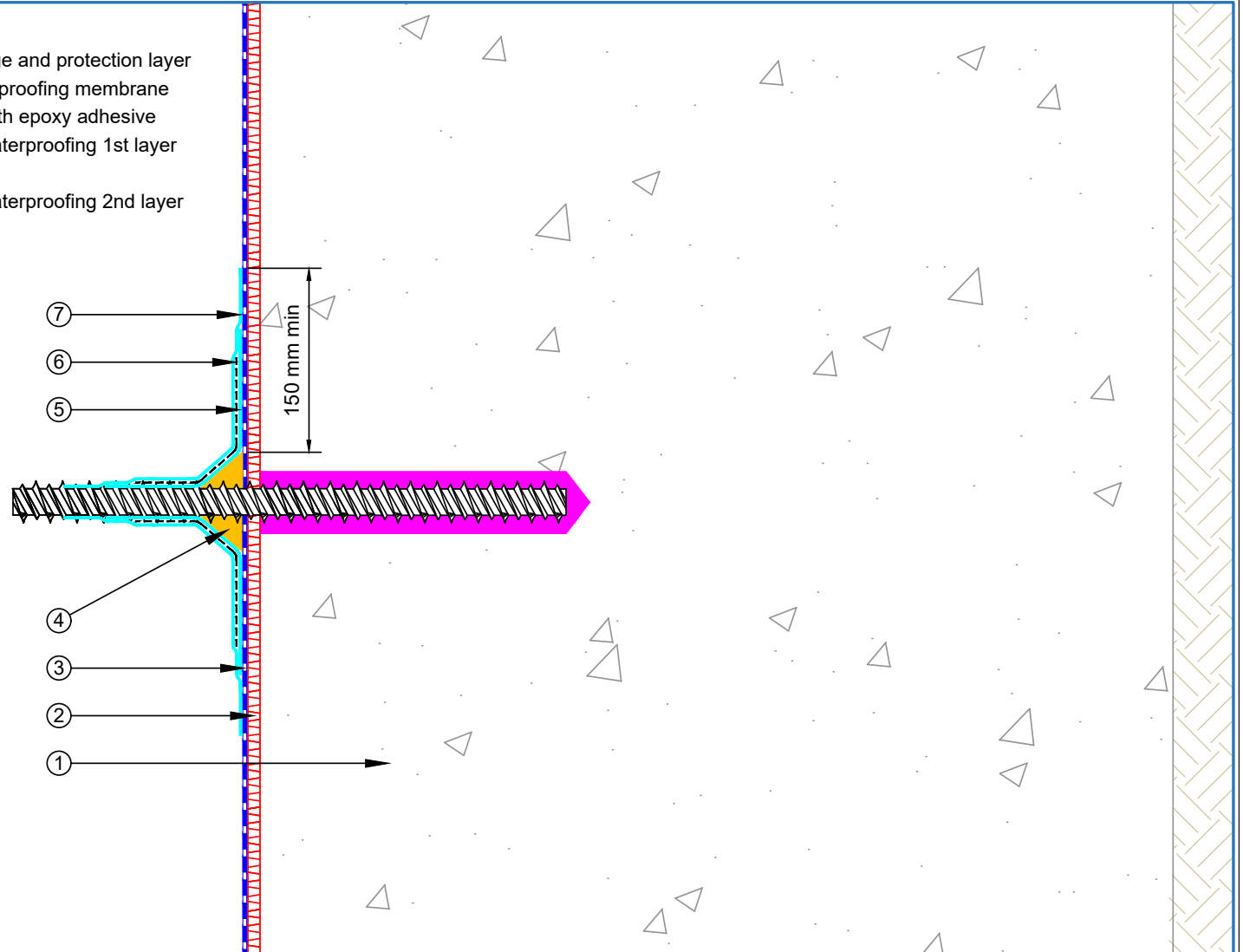


E-mail : [admin@equus.co.nz](mailto:admin@equus.co.nz)  
Web : [www.equus.co.nz](http://www.equus.co.nz)

PROJECT :	Belowgrade Waterproofing Detail - BSW		
TITLE :	Lift Pit Detail - Membrane connection		
NUMBER :	SBBWS-D10a(4)	SCALE :	1:2
DRAWN BY :	NKT	DATE :	10-Aug-2022
REVISED :			
<p>Equus Waterproof Membrane Details are specially drawn for use by Local Authorities, Building Contractors, Equus Applicators, Architects and design professionals. All details are drawn to assist in the development of project specific details. Details may be modified where necessary to accommodate job specific requirements but must be approved by Equus Industries Ltd. All components must be supplied by Equus Industries Ltd. Equus reserves the right to alter or upgrade details at any time without prior notice.</p>			

AUTHORISED DISTRIBUTOR  
**SOPREMA**

- ① Secant piling and shotcrete
- ② EQUUS SOPREMA Sopradrain 10G, drainage and protection layer
- ③ EQUUS SOPREMA Colphene BSW V, waterproofing membrane
- ④ EQUUS SOPREMA Alsan EP M, high strength epoxy adhesive
- ⑤ EQUUS SOPREMA Alsan Flashing, liquid waterproofing 1st layer
- ⑥ EQUUS SOPREMA Reinforcement fleece
- ⑦ EQUUS SOPREMA Alsan Flashing, liquid waterproofing 2nd layer



PROJECT :	Belowgrade Standard Detail - Colphene		
TITLE :	The penetration diameter under 50 mm detail		
NUMBER :	SDBWS-D12a	SCALE :	1:2
DRAWN BY :	NKT	DATE :	04-Jul-2023
		REVISED :	
<p><small>Equus Waterproof Membrane Details are specially drawn for use by Local Authorities, Building Contractors, Equus Applicators, Architects and design professionals. All details are drawn to assist in the development of project specific details. Details may be modified where necessary to accommodate job specific requirements but must be approved by Equus Industries Ltd. All components must be supplied by Equus Industries Ltd. Equus reserves the right to alter or upgrade details at any time without prior notice.</small></p>			