



# EQUUS SOPREMA COLPHENE 3000 TANKING SYSTEM

Standard Detail Package



CELEBRATING  
**40** YEARS  
1982-2022

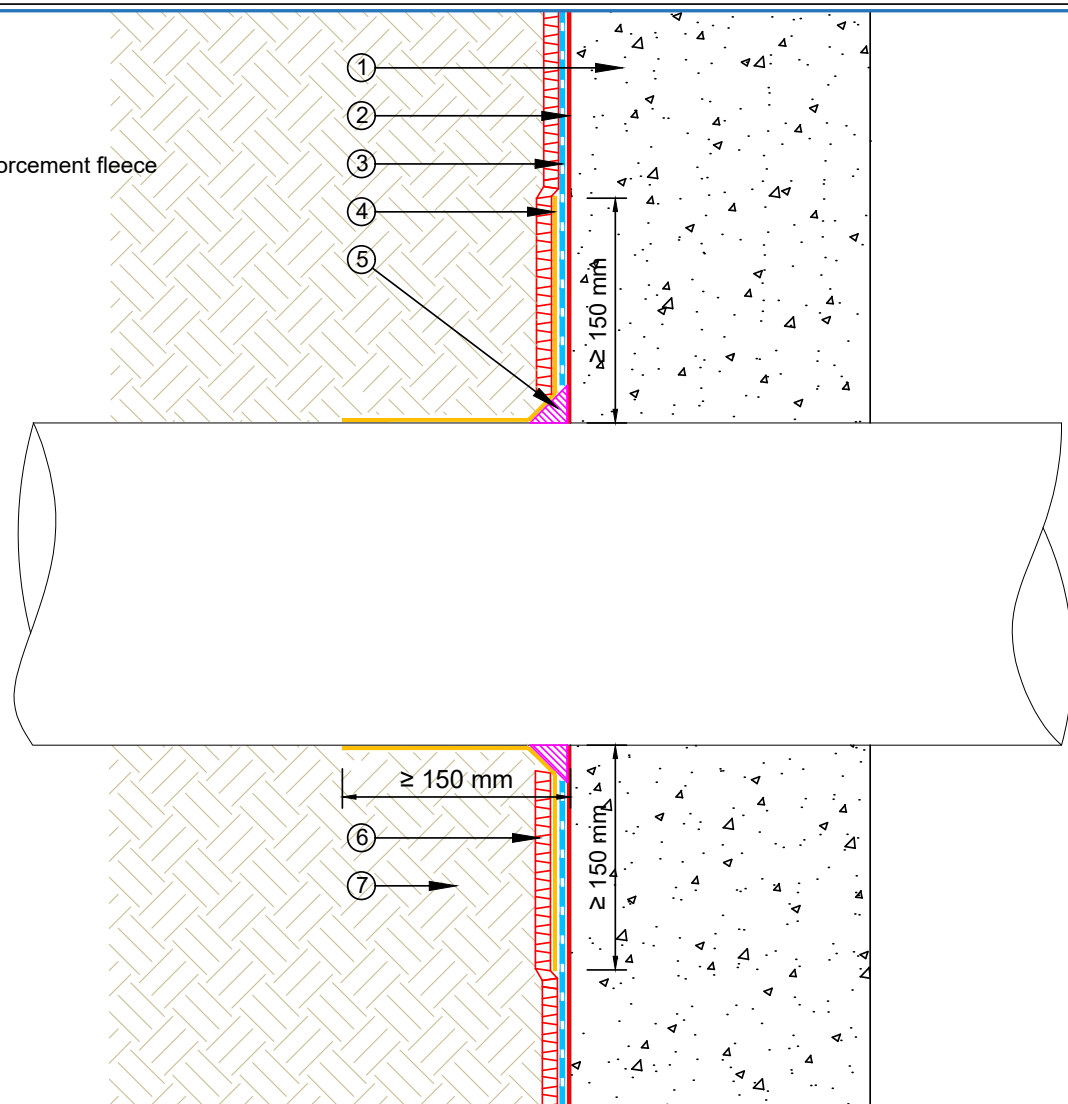


MARCH 2024

## CONTENTS

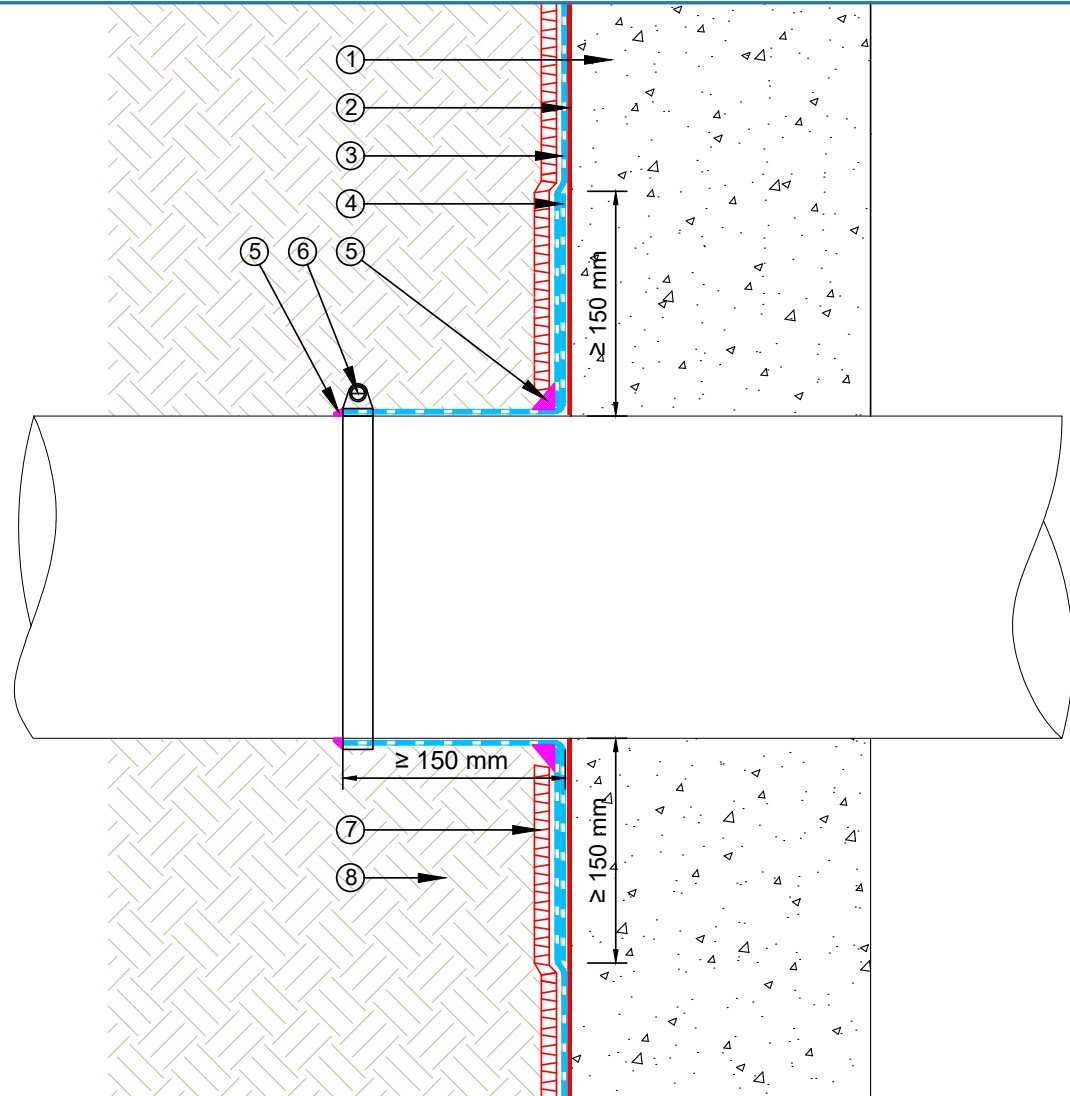
SCBWS-D2c	PVC Pipe on Vertical Wall	1
SCBWS-D2d	Pipe on Vertical Wall	2
SCBWS-D4a	Wall Termination with Termination Bar	3
SCBWS-D4b	Wall Termination with Termination Bar (Optional)	4
SCBWS-D4c	Chase Flashing as Termination	5
SCBWS-D4d	Membrane Termination with Termination Bar and 2KM	6
SCBWS-D5a	Floor Wall Connection	7
SCBWS-D5b	Floor Wall Connection to DPM	8
SCBWS-D5c	Floor Wall Connection to DPM Detail (Optional)	9
SCBWS-D6a	Wall and Footing	10
SCBWS-D6b	Wall and Footing (Optional)	11
SCBWS-D9a	Seismic Joint	12
SCBWS-D10a	Lift Pit Detail – Lift Pit Waterproofing – Overview	13
SCBWS-D10a(1)	Lift Pit Detail – Floor Wall Connection	14
SCBWS-D10a(2)	Lift Pit Detail – Membrane Termination	15
SCBWS-D10a(3)	Lift Pit Detail – Membrane and DPM	16
SCBWS-D10a(4)	Lift Pit Detail – Membrane Connection	17
SCBWS-D11a	Podium Waterproofing Transition	18

- ① Concrete Basement Wall
- ② EQUUS Peel & Stick primer
- ③ EQUUS SOPREMA Colphene 3000, Waterproofing membrane
- ④ EQUUS Matacyl Thix or EQUUS SOPREMA Alsan Flashing with reinforcement fleece
- ⑤ EQUUS SOPREMA Alsan Mastic 2200 bitumen sealant
- ⑥ EQUUS SOPREMA Sopradrain 10G, drainage and protection layer
- ⑦ Backfill



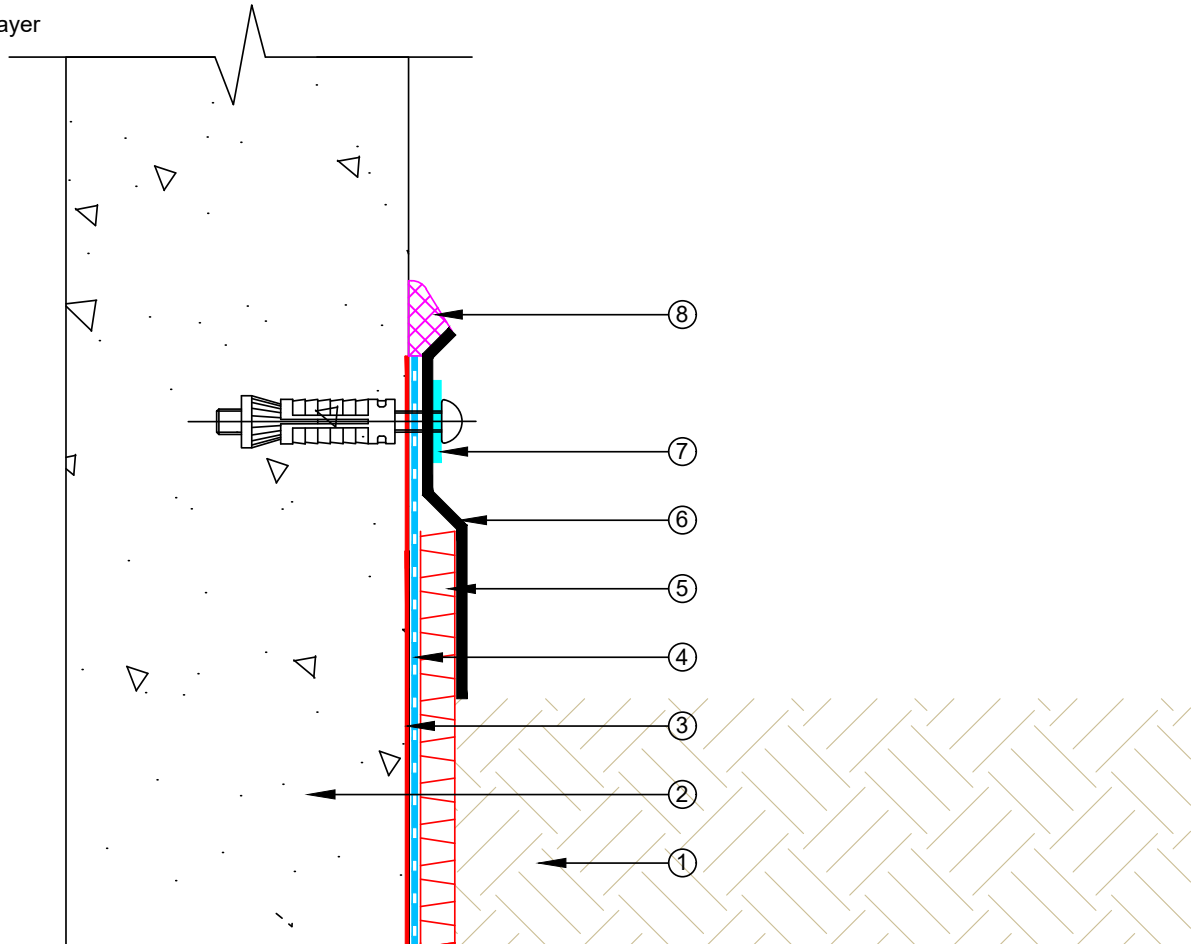
PROJECT :	Belowgrade Waterproofing Detail - Colphene 3000		
TITLE :	PVC Pipe on Vertical Wall Detail		
NUMBER :	SCBWS-D2c	SCALE :	1:5
DRAWN BY :	NKT	DATE :	11-Aug-2022
		REVISED :	
<p><small>Equus Waterproof Membrane Details are specially drawn for use by Local Authorities, Building Contractors, Equus Applicators, Architects and design professionals. All details are drawn to assist in the development of project specific details. Details may be modified where necessary to accommodate job specific requirements but must be approved by Equus Industries Ltd. All components must be supplied by Equus Industries Ltd. Equus reserves the right to alter or upgrade details at any time without prior notice.</small></p>			

- ① Concrete Basement Wall
- ② EQUUS Peel & Stick primer
- ③ EQUUS SOPREMA Colphene 3000, Waterproofing membrane
- ④ EQUUS SOPREMA Colphene 3000, Waterproofing reinforcement strip
- ⑤ EQUUS SOPREMA Alsan Mastic 2200 bitumen sealant
- ⑥ S/S Clamp Ring
- ⑦ EQUUS SOPREMA Sopradrain 10G, drainage and protection layer
- ⑧ Backfill



<p>E-mail : <a href="mailto:admin@equus.co.nz">admin@equus.co.nz</a> Web : <a href="http://www.equus.co.nz">www.equus.co.nz</a></p>	PROJECT :		Belowgrade Waterproofing Detail - Colphene 3000		<p>AUTHORISED DISTRIBUTOR</p>		
	TITLE :		Pipe on Vertical Wall Detail				
	NUMBER :	SCBWS-D2d	SCALE :	1:5			
	DRAWN BY :	NKT	DATE :	11-Aug-2022		REVISED :	
	<p>Equus Waterproof Membrane Details are specially drawn for use by Local Authorities, Building Contractors, Equus Applicators, Architects and design professionals. All details are drawn to assist in the development of project specific details. Details may be modified where necessary to accommodate job specific requirements but must be approved by Equus Industries Ltd. All components must be supplied by Equus Industries Ltd. Equus reserves the right to alter or upgrade details at any time without prior notice.</p>						

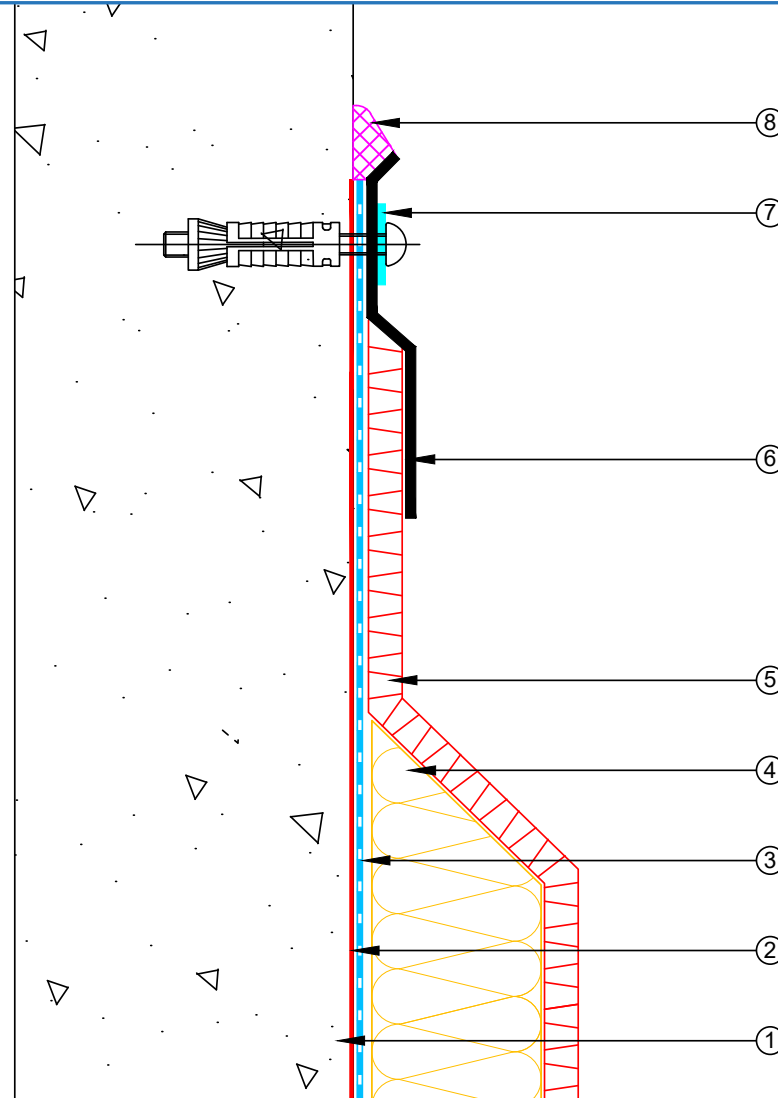
- ① Backfill
- ② Concrete wall
- ③ EQUUS Peel & Stick primer
- ④ EQUUS SOPREMA Colphene 3000, Waterproofing membrane
- ⑤ EQUUS SOPREMA Sopradrain 10G, drainage and protection layer
- ⑥ EQUUS Termination Profile
- ⑦ Neoprene Washer
- ⑧ EQUUS SOPREMA Alsan Mastic 2200 bitumen sealant



 E-mail : <a href="mailto:admin@equus.co.nz">admin@equus.co.nz</a> Web : <a href="http://www.equus.co.nz">www.equus.co.nz</a>	PROJECT :		Belowgrade Waterproofing Detail - Colphene 3000			
	TITLE :		Wall Termination with Termination Bar			
	NUMBER :	SCBWS-D4a	SCALE :	1:2		
	DRAWN BY :	NKT	DATE :	11-Aug-2022	REVISED :	
	Equus Waterproof Membrane Details are specially drawn for use by Local Authorities, Building Contractors, Equus Applicators, Architects and design professionals. All details are drawn to assist in the development of project specific details. Details may be modified where necessary to accommodate job specific requirements but must be approved by Equus Industries Ltd. All components must be supplied by Equus Industries Ltd. Equus reserves the right to alter or upgrade details at any time without prior notice.					

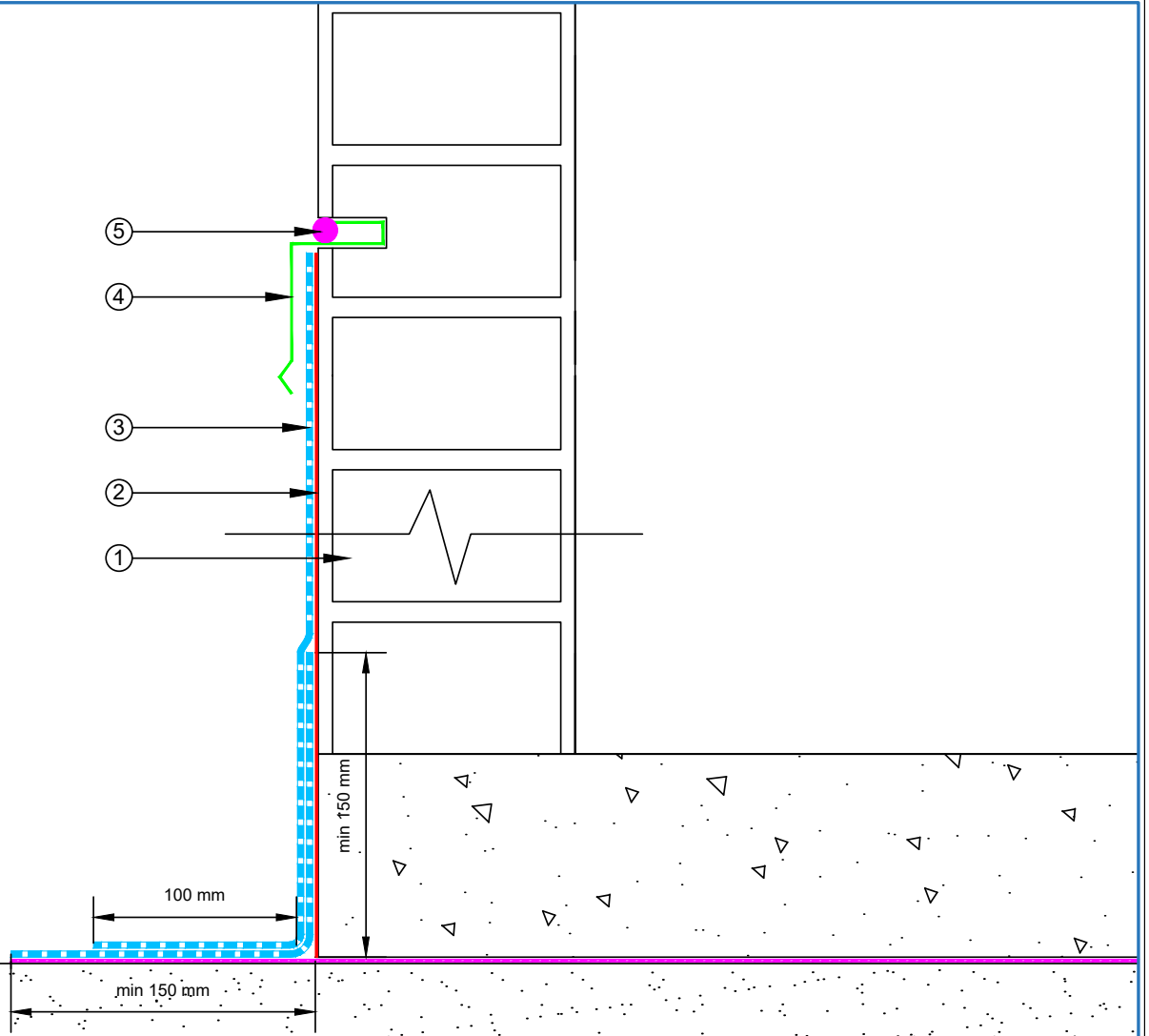


- ① Concrete wall
- ② EQUUS Peel & Stick primer
- ③ EQUUS SOPREMA Colphene 3000, Waterproofing membrane
- ④ XPS insulation
- ⑤ EQUUS SOPREMA Sopradrain 10G, drainage and protection layer
- ⑥ EQUUS Termination Profile
- ⑦ Neoprene Washer
- ⑧ EQUUS SOPREMA Alsan Mastic 2200 bitumen sealant



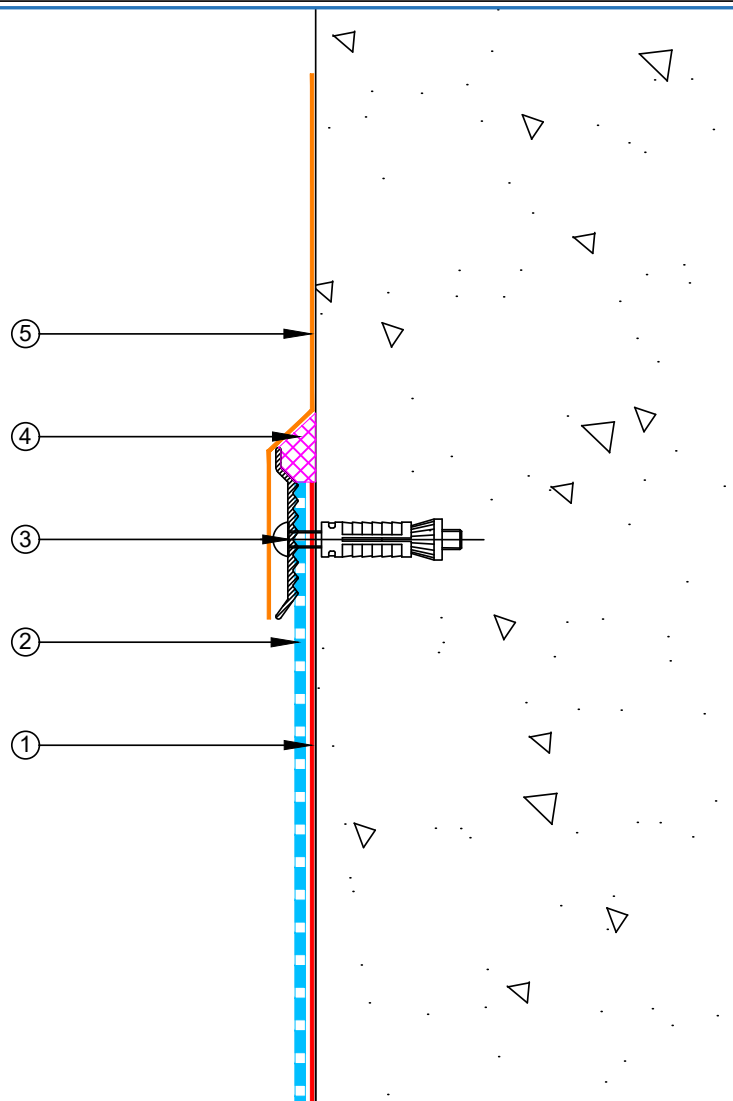
 E-mail : <a href="mailto:admin@equus.co.nz">admin@equus.co.nz</a> Web : <a href="http://www.equus.co.nz">www.equus.co.nz</a>	PROJECT :		Belowgrade Waterproofing Detail - Colphene 3000		 AUTHORISED DISTRIBUTOR	
	TITLE :		Wall Termination with Termination Bar (Optional)			
	NUMBER :		SCBWS-D4b	SCALE :		1:2
	DRAWN BY :		NKT	DATE :		11-Aug-2022
				REVISED :		
<p><small>Equus Waterproof Membrane Details are specially drawn for use by Local Authorities, Building Contractors, Equus Applicators, Architects and design professionals. All details are drawn to assist in the development of project specific details. Details may be modified where necessary to accommodate job specific requirements but must be approved by Equus Industries Ltd. All components must be supplied by Equus Industries Ltd. Equus reserves the right to alter or upgrade details at any time without prior notice.</small></p>						

- ① Concrete Block Wall
- ② EQUUS Peel & Stick primer
- ③ EQUUS SOPREMA Colphene 3000, Waterproofing membrane
- ④ Metal Flashing
- ⑤ EQUUS SOPREMA Alsan Mastic 2200 bitumen sealant



 E-mail : <a href="mailto:admin@equus.co.nz">admin@equus.co.nz</a> Web : <a href="http://www.equus.co.nz">www.equus.co.nz</a>	PROJECT :		Belowgrade Waterproofing Detail - Colphene 3000		
	TITLE :		Chase Flashing as termination Detail		
	NUMBER :	SCBWS-D4c	SCALE :	1:3	
	DRAWN BY :	NKT	DATE :	11-Aug-2022	
			REVISED :		
<p><small>Equus Waterproof Membrane Details are specially drawn for use by Local Authorities, Building Contractors, Equus Applicators, Architects and design professionals. All details are drawn to assist in the development of project specific details. Details may be modified where necessary to accommodate job specific requirements but must be approved by Equus Industries Ltd. All components must be supplied by Equus Industries Ltd. Equus reserves the right to alter or upgrade details at any time without prior notice.</small></p>					

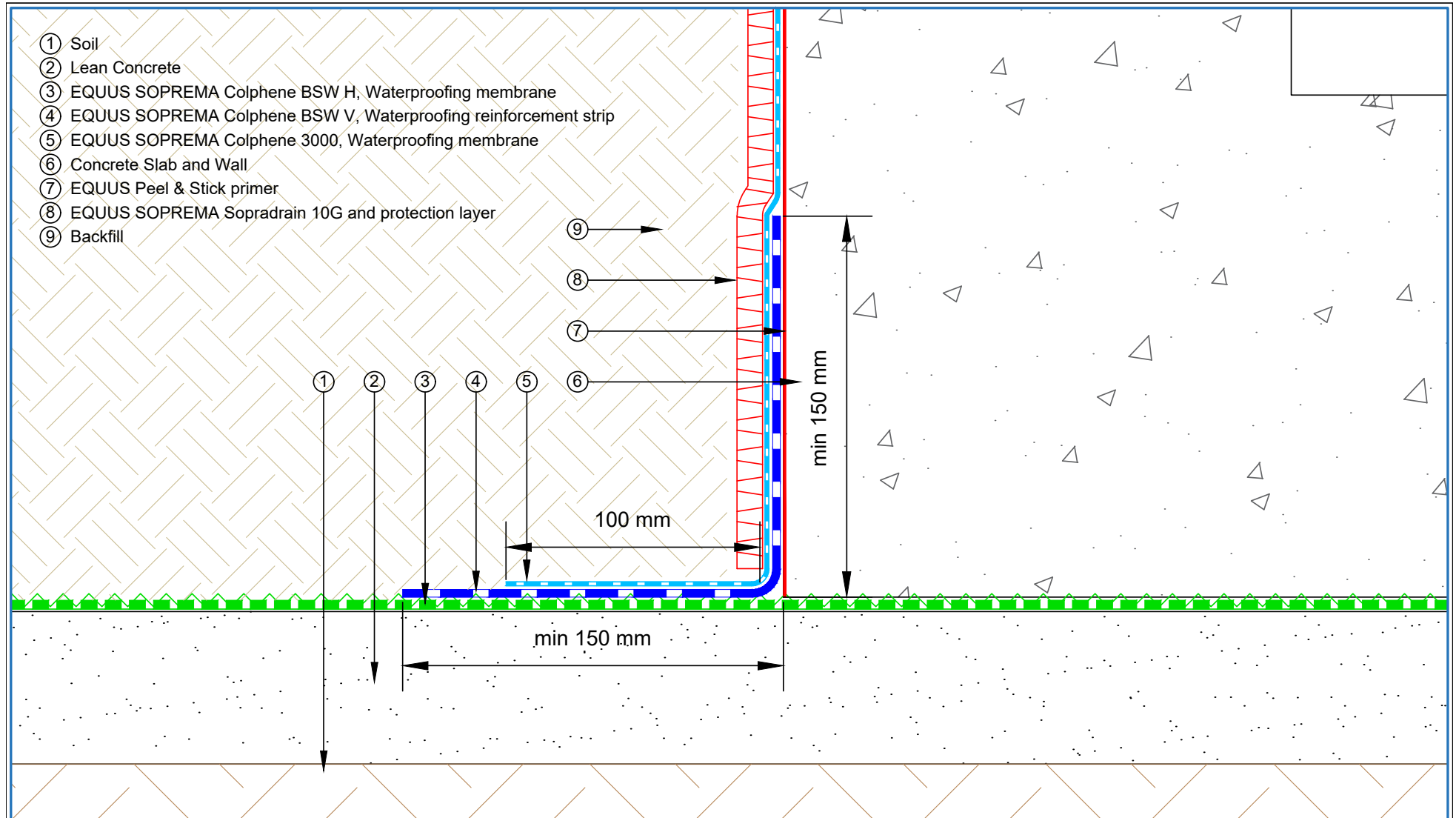
- ① EQUUS Peel & Stick primer
- ② EQUUS SOPREMA Colphene 3000, Waterproofing membrane
- ③ EQUUS SOPREMA C-profile pressure seal
- ④ EQUUS SOPREMA Alsan Mastic 2200 bitumen sealant
- ⑤ EQUUS Aquafin 2 K/M with reinforcement tape



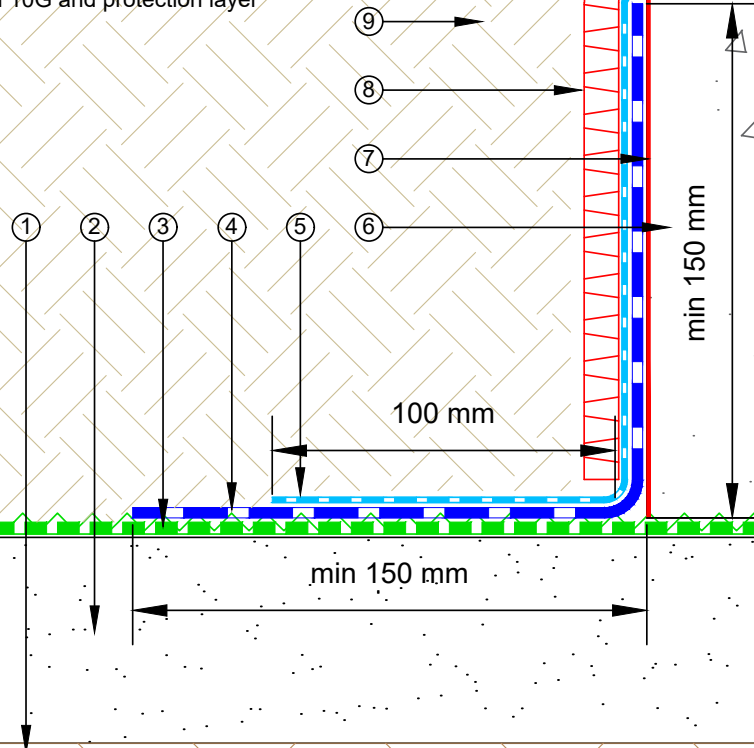
PROJECT :	Belowgrade Waterproofing Detail - Colphene 3000		
TITLE :	Membrane termination with Termination Bar and 2KM System		
NUMBER :	SCBWS-D4d	SCALE :	1:2
DRAWN BY :	NKT	DATE :	16-Jun-2023
		REVISED :	
<p><small>Equus Waterproof Membrane Details are specially drawn for use by Local Authorities, Building Contractors, Equus Applicators, Architects and design professionals. All details are drawn to assist in the development of project specific details. Details may be modified where necessary to accommodate job specific requirements but must be approved by Equus Industries Ltd. All components must be supplied by Equus Industries Ltd. Equus reserves the right to alter or upgrade details at any time without prior notice.</small></p>			



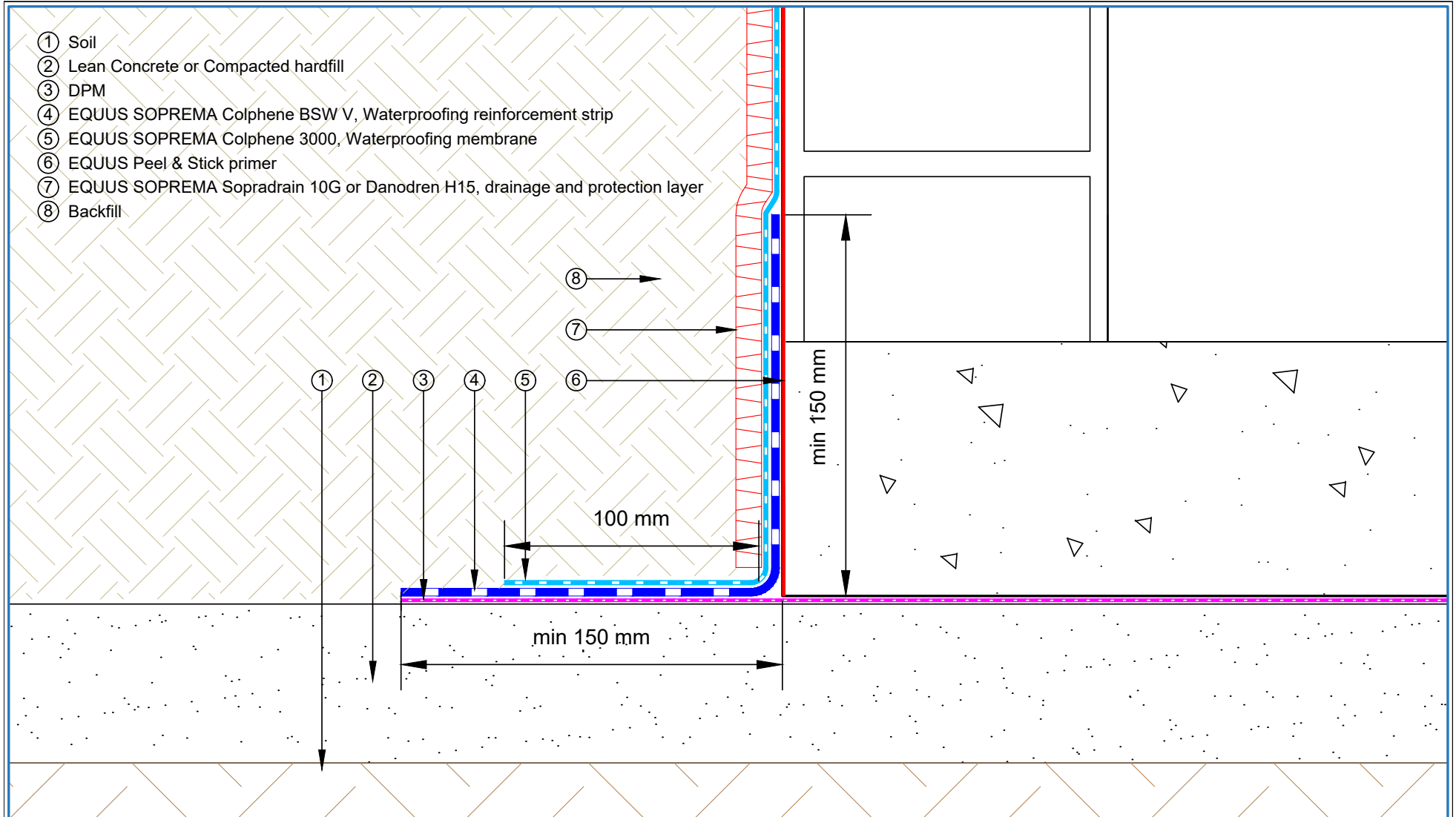




- ① Soil
- ② Lean Concrete
- ③ EQUUS SOPREMA Colphene BSW H, Waterproofing membrane
- ④ EQUUS SOPREMA Colphene BSW V, Waterproofing reinforcement strip
- ⑤ EQUUS SOPREMA Colphene 3000, Waterproofing membrane
- ⑥ Concrete Slab and Wall
- ⑦ EQUUS Peel & Stick primer
- ⑧ EQUUS SOPREMA Sopradrain 10G and protection layer
- ⑨ Backfill



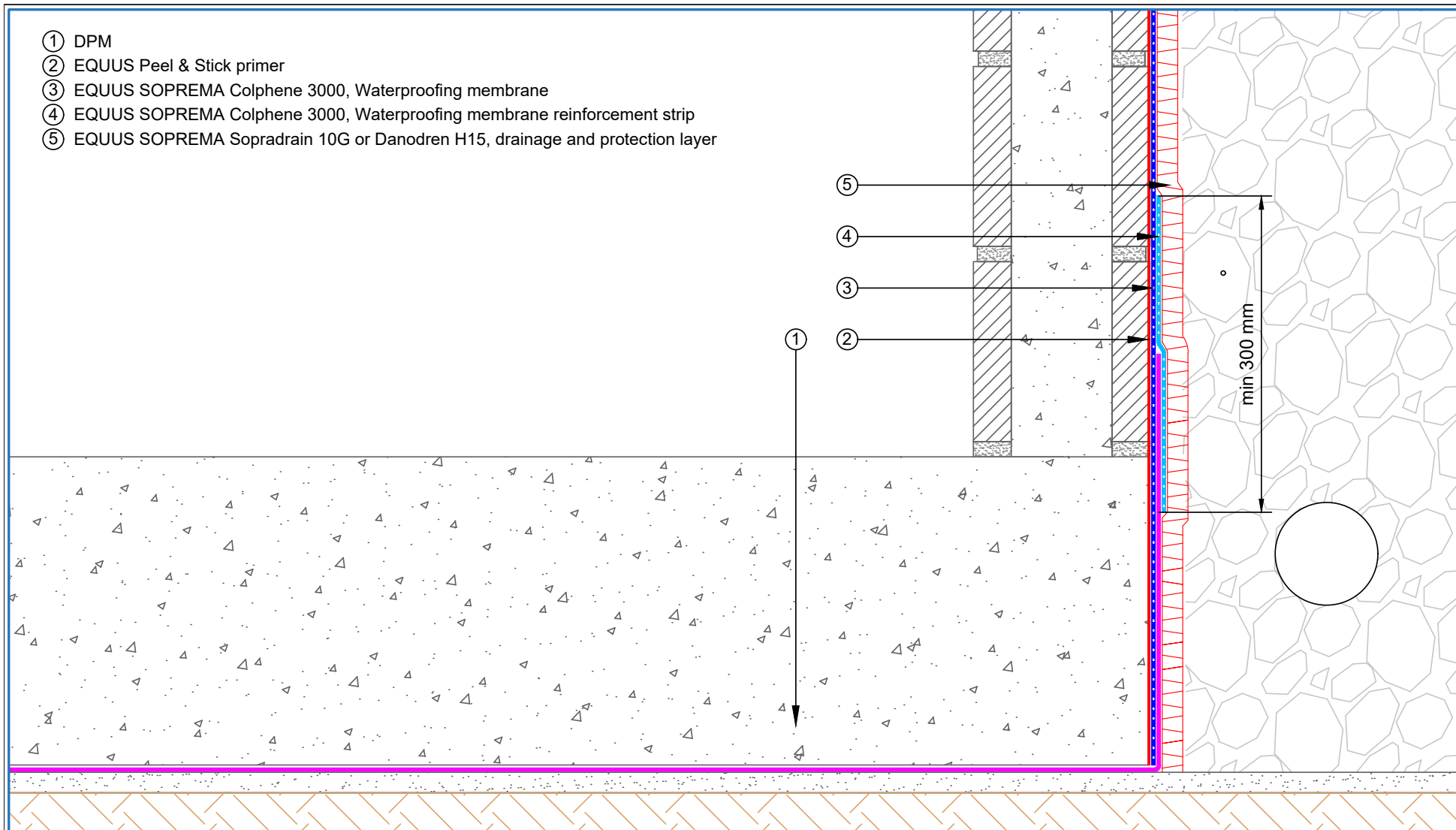
<p>E-mail : <a href="mailto:admin@equus.co.nz">admin@equus.co.nz</a> Web : <a href="http://www.equus.co.nz">www.equus.co.nz</a></p>	PROJECT :		Belowgrade Waterproofing Detail - Colphene 3000		<p>AUTHORISED DISTRIBUTOR <b>SOPREMA</b></p>
	TITLE :		Floor Wall Connection Detail		
	NUMBER :	SCBWS-D5a	SCALE :	1:2	
	DRAWN BY :	NKT	DATE :	11-Aug-2022	
			REVISED :		
<p>Equus Waterproof Membrane Details are specially drawn for use by Local Authorities, Building Contractors, Equus Applicators, Architects and design professionals. All details are drawn to assist in the development of project specific details. Details may be modified where necessary to accommodate job specific requirements but must be approved by Equus Industries Ltd. All components must be supplied by Equus Industries Ltd. Equus reserves the right to alter or upgrade details at any time without prior notice.</p>					



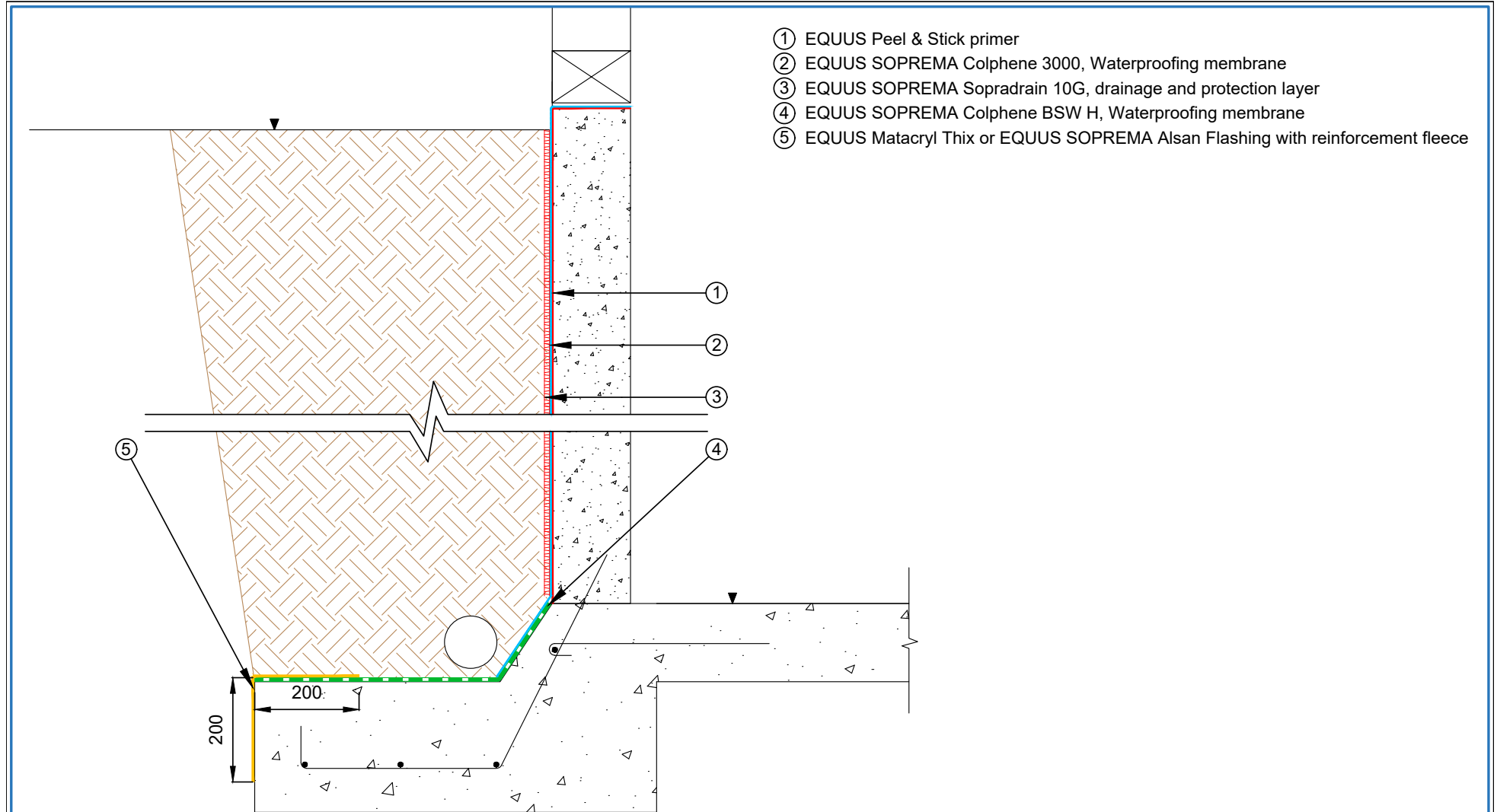
PROJECT :	Belowgrade Waterproofing Detail - Colphene 3000		
TITLE :	Floor Wall Connection to DPM Detail		
NUMBER :	SCBWS-D5b	SCALE :	1:2
DRAWN BY :	NKT	DATE :	11-Aug-2022
REVISED :			
<p><small>Equus Waterproof Membrane Details are specially drawn for use by Local Authorities, Building Contractors, Equus Applicators, Architects and design professionals. All details are drawn to assist in the development of project specific details. Details may be modified where necessary to accommodate job specific requirements but must be approved by Equus Industries Ltd. All components must be supplied by Equus Industries Ltd. Equus reserves the right to alter or upgrade details at any time without prior notice.</small></p>			



- ① DPM
- ② EQUUS Peel & Stick primer
- ③ EQUUS SOPREMA Colphene 3000, Waterproofing membrane
- ④ EQUUS SOPREMA Colphene 3000, Waterproofing membrane reinforcement strip
- ⑤ EQUUS SOPREMA Sopradrain 10G or Danodren H15, drainage and protection layer



 E-mail : <a href="mailto:info@equus.nz">info@equus.nz</a> Web : <a href="http://www.equus.nz">www.equus.nz</a>	PROJECT :		Belowgrade Waterproofing Detail - Colphene 3000		 AUTHORISED DISTRIBUTOR
	TITLE :		Floor Wall Connection to DPM Detail (optional)		
	NUMBER :	SCBWS-D5c	SCALE :	NTS	
	DRAWN BY :	NKT	DATE :	08-Aug-2023	
	REVISD :				
<p><small>Equus Waterproof Membrane Details are specially drawn for use by Local Authorities, Building Contractors, Equus Applicators, Architects and design professionals. All details are drawn to assist in the development of project specific details. Details may be modified where necessary to accommodate job specific requirements but must be approved by Equus Industries Ltd. All components must be supplied by Equus Industries Ltd. Equus reserves the right to alter or upgrade details at any time without prior notice.</small></p>					

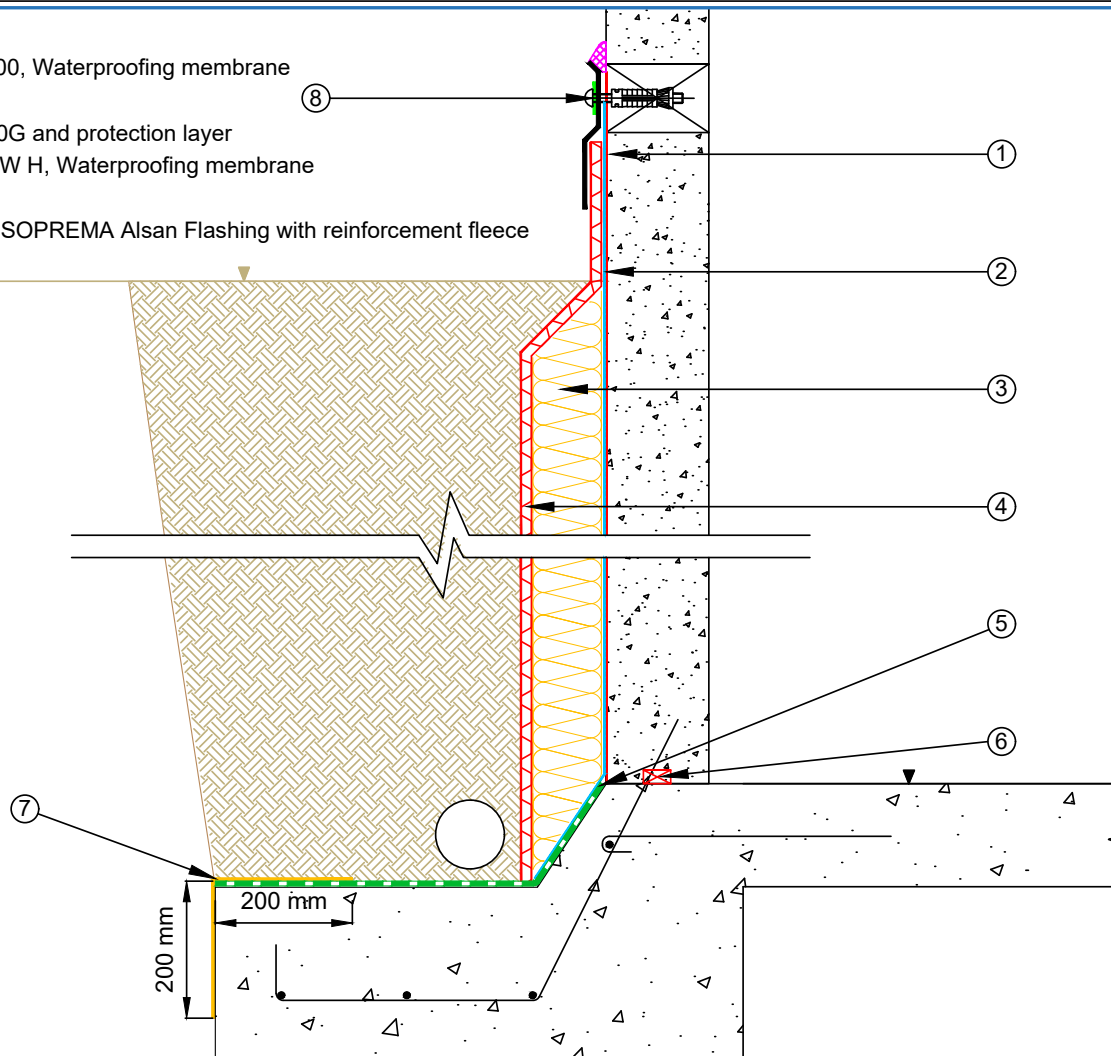


- ① EQUUS Peel & Stick primer
- ② EQUUS SOPREMA Colphene 3000, Waterproofing membrane
- ③ EQUUS SOPREMA Sopradrain 10G, drainage and protection layer
- ④ EQUUS SOPREMA Colphene BSW H, Waterproofing membrane
- ⑤ EQUUS Matacryl Thix or EQUUS SOPREMA Alsan Flashing with reinforcement fleece

Note : All dimensions are in millimeters

 E-mail : <a href="mailto:admin@equus.co.nz">admin@equus.co.nz</a> Web : <a href="http://www.equus.co.nz">www.equus.co.nz</a>	PROJECT :		Belowgrade Waterproofing Detail - Colphene 3000		 AUTHORISED DISTRIBUTOR <b>SOPREMA</b>	
	TITLE :		Wall and Footing Detail			
	NUMBER :		SCBWS-D6a	SCALE :		1:10
	DRAWN BY :	NKT	DATE :	11-Aug-2022		REVISED :
	Equus Waterproof Membrane Details are specially drawn for use by Local Authorities, Building Contractors, Equus Applicators, Architects and design professionals. All details are drawn to assist in the development of project specific details. Details may be modified where necessary to accommodate job specific requirements but must be approved by Equus Industries Ltd. All components must be supplied by Equus Industries Ltd. Equus reserves the right to alter or upgrade details at any time without prior notice.					

- ① EQUUS Peel & Stick Primer
- ② EQUUS SOPREMA Colphene 3000, Waterproofing membrane
- ③ XPS insulation
- ④ EQUUS SOPREMA Sopradrain 10G and protection layer
- ⑤ EQUUS SOPREMA Colphene BSW H, Waterproofing membrane
- ⑥ EQUUS Waterstop
- ⑦ EQUUS Matacyl Thix or EQUUS SOPREMA Alsan Flashing with reinforcement fleece
- ⑧ EQUUS Termination Profile



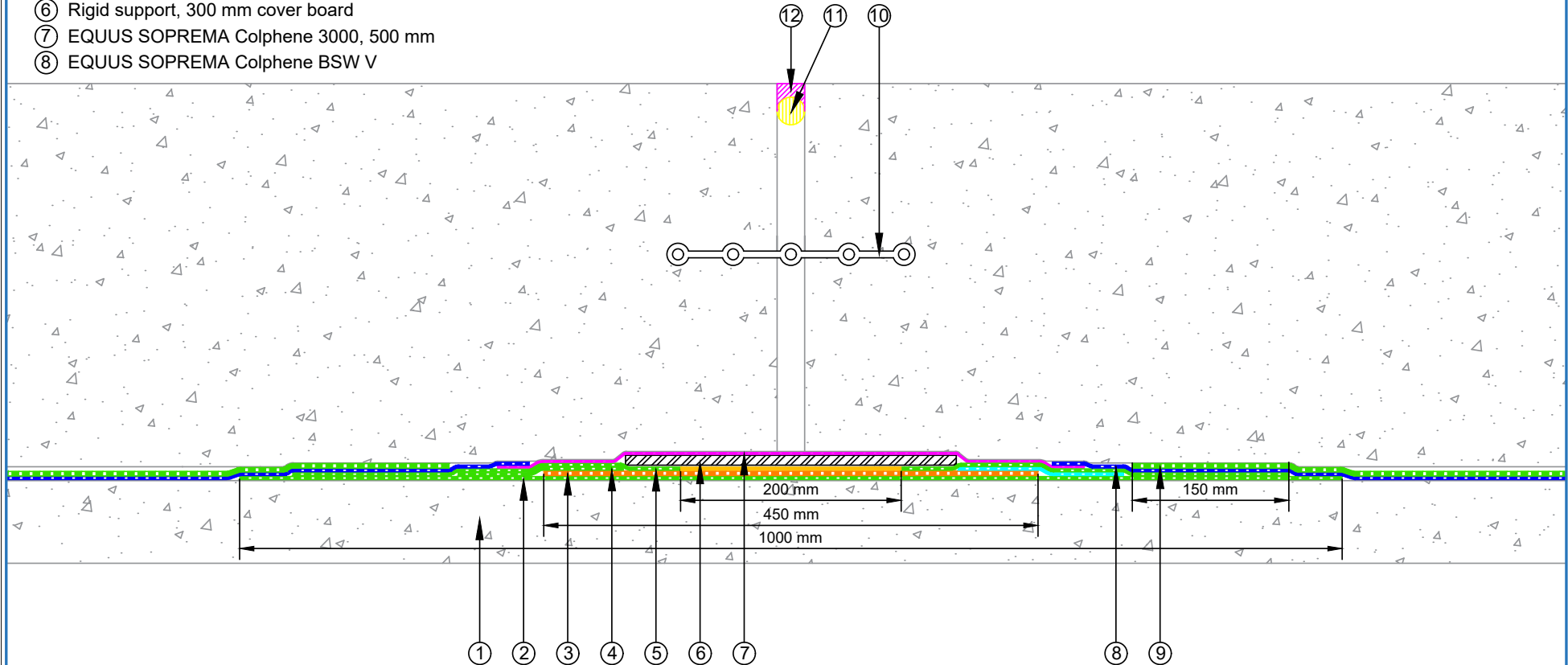
E-mail : [admin@equus.co.nz](mailto:admin@equus.co.nz)  
Web : [www.equus.co.nz](http://www.equus.co.nz)

PROJECT :	Belowgrade Waterproofing Detail - Colphene 3000		
TITLE :	Wall and Footing Detail (Optional)		
NUMBER :	SCBWS-D6b	SCALE :	1:10
DRAWN BY :	NKT	DATE :	11-Aug-2022
REVISED :			

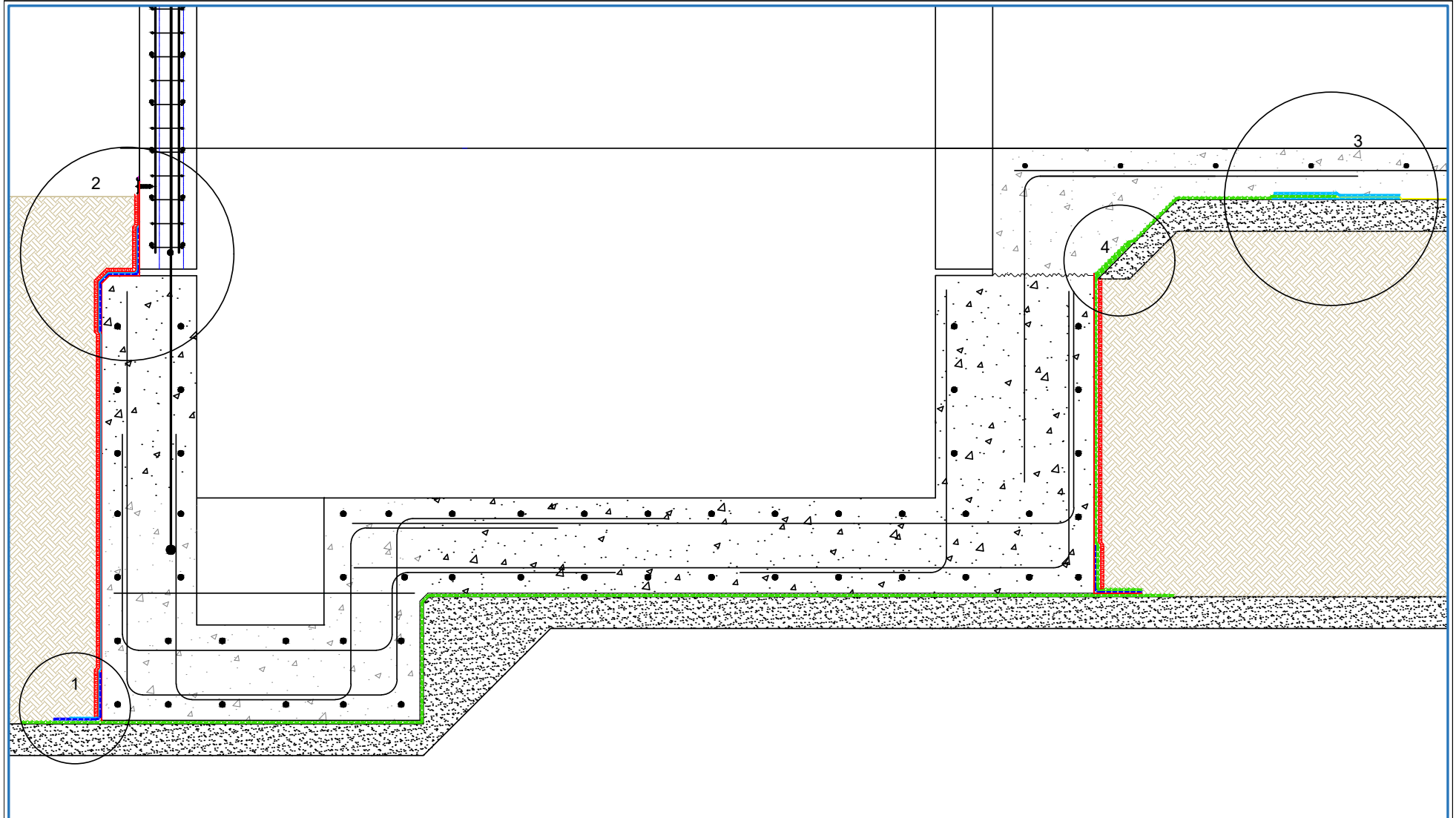
Equus Waterproof Membrane Details are specially drawn for use by Local Authorities, Building Contractors, Equus Applicators, Architects and design professionals. All details are drawn to assist in the development of project specific details. Details may be modified where necessary to accommodate job specific requirements but must be approved by Equus Industries Ltd. All components must be supplied by Equus Industries Ltd. Equus reserves the right to alter or upgrade details at any time without prior notice.





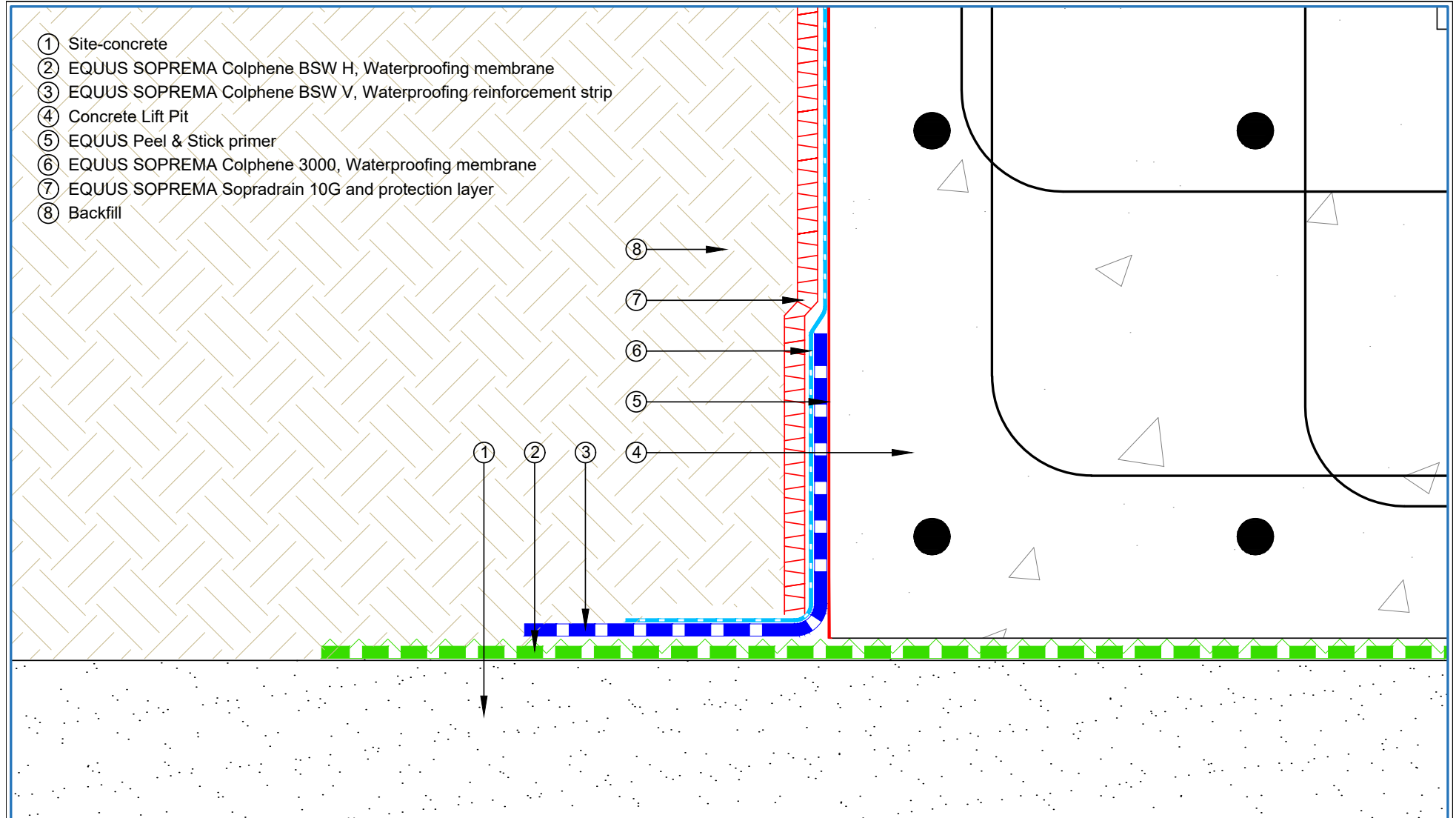
- |   |  |
|---|--|
| ① Site concrete   | ⑨ EQUUS SOPREMA Colphene BSW H, Waterproofing membrane |
| ② EQUUS SOPREMA Colphene BSW H, 1st layer (heat-welded)   | ⑩ Waterstop  |
| ③ EQUUS SOPREMA SOPRAJOINT (laps heat-welded)   | ⑪ Rod foam   |
| ④ EQUUS SOPREMA Colphene BSW H, (reinforcement, heat-welded)<br>Minimum 150 mm reinforcement strip centered on the edge of the flange | ⑫ EQUUS Alsan Mastic 2200 sealant                      |
| ⑤ EQUUS SOPREMA Colphene BSW H, 2nd layer (heat-welded)   |  |
| ⑥ Rigid support, 300 mm cover board   |  |
| ⑦ EQUUS SOPREMA Colphene 3000, 500 mm   |  |
| ⑧ EQUUS SOPREMA Colphene BSW V  |  |



 E-mail : <a href="mailto:admin@equus.co.nz">admin@equus.co.nz</a> Web : <a href="http://www.equus.co.nz">www.equus.co.nz</a>	PROJECT :	Belowgrade Waterproofing Detail - Colphene 3000		
	TITLE :	Seismic joint detail		
	NUMBER :	SCBWS-D9a	SCALE :	1:5
	DRAWN BY :	NKT	DATE :	11-Aug-2022
			REVISED :	
Equus Waterproof Membrane Details are specially drawn for use by Local Authorities, Building Contractors, Equus Applicators, Architects and design professionals. All details are drawn to assist in the development of project specific details. Details may be modified where necessary to accommodate job specific requirements but must be approved by Equus Industries Ltd. All components must be supplied by Equus Industries Ltd. Equus reserves the right to alter or upgrade details at any time without prior notice.				



 <p>E-mail : <a href="mailto:admin@equus.co.nz">admin@equus.co.nz</a> Web : <a href="http://www.equus.co.nz">www.equus.co.nz</a></p>	PROJECT :	Belowgrade Waterproofing Detail - Colphene 3000			 <p>AUTHORISED DISTRIBUTOR <b>SOPREMA</b></p>		
	TITLE :	Lift Pit Detail - Lift Pit Waterproofing Detail - Overview					
	NUMBER :	SCBWS-D10a	SCALE :	1:16			
	DRAWN BY :	NKT	DATE :	11-Aug-2022		REVISED :	
	<p>Equus Waterproof Membrane Details are specially drawn for use by Local Authorities, Building Contractors, Equus Applicators, Architects and design professionals. All details are drawn to assist in the development of project specific details. Details may be modified where necessary to accommodate job specific requirements but must be approved by Equus Industries Ltd. All components must be supplied by Equus Industries Ltd. Equus reserves the right to alter or upgrade details at any time without prior notice.</p>						

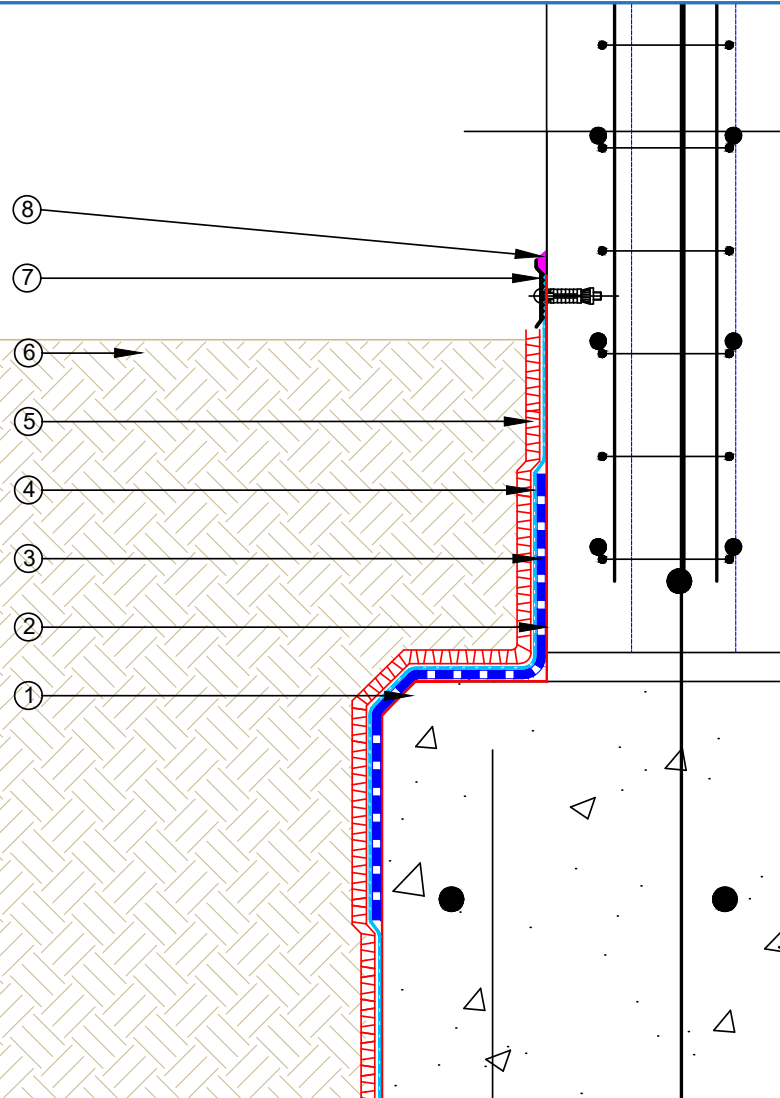


PROJECT :	Belowgrade Waterproofing Detail - Colphene 3000		
TITLE :	Lift Pit Detail - Floor Wall connection		
NUMBER :	SCBWS-D10a(1)	SCALE :	1:3
DRAWN BY :	NKT	DATE :	11-Aug-2022
REVISED :			
<p>Equus Waterproof Membrane Details are specially drawn for use by Local Authorities, Building Contractors, Equus Applicators, Architects and design professionals. All details are drawn to assist in the development of project specific details. Details may be modified where necessary to accommodate job specific requirements but must be approved by Equus Industries Ltd. All components must be supplied by Equus Industries Ltd. Equus reserves the right to alter or upgrade details at any time without prior notice.</p>			



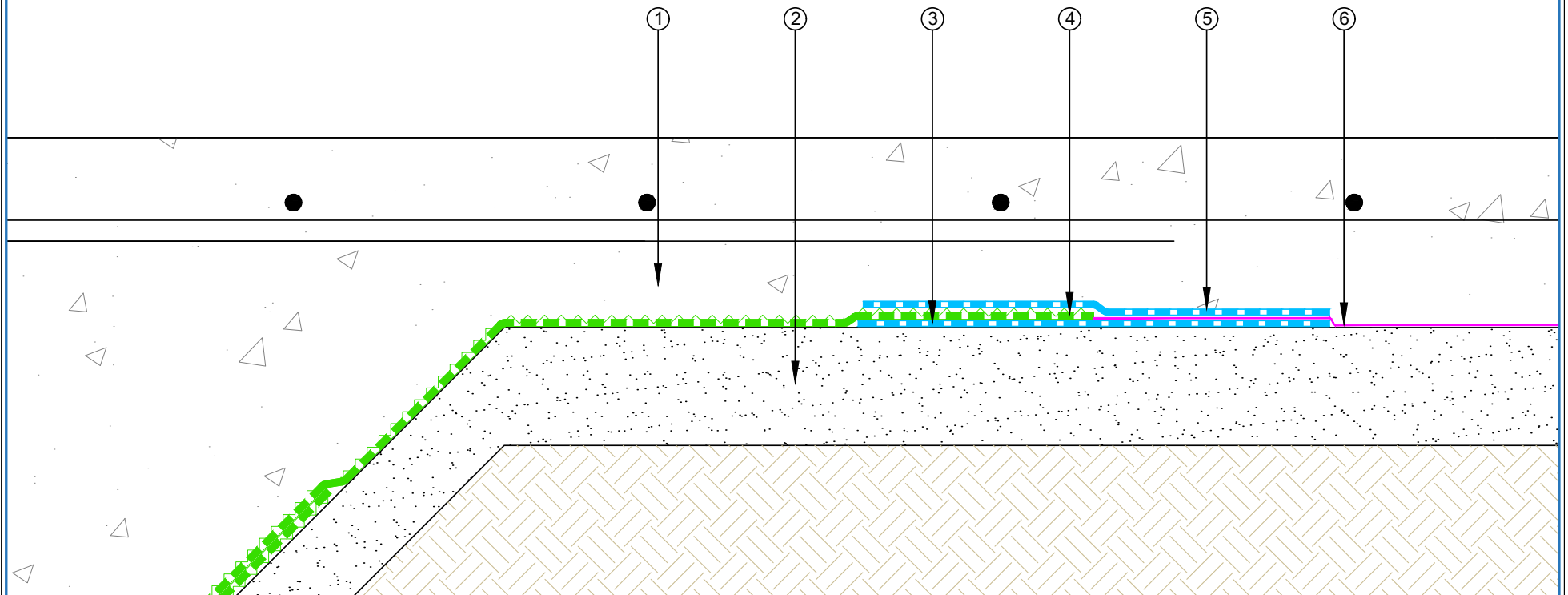


- ① Chamfered corner
- ② EQUUS Peel & Stick primer
- ③ EQUUS SOPREMA Colphene BSW V, Waterproofing reinforcement strip
- ④ EQUUS SOPREMA Colphene 3000, Waterproofing membrane
- ⑤ EQUUS SOPREMA Sopradrain 10G and protection layer
- ⑥ Backfill
- ⑦ EQUUS Termination profile
- ⑧ EQUUS SOPREMA Alsan Mastic 2200 bitumen sealant



 E-mail : <a href="mailto:admin@equus.co.nz">admin@equus.co.nz</a> Web : <a href="http://www.equus.co.nz">www.equus.co.nz</a>	PROJECT :		Belowgrade Waterproofing Detail - Colphene 3000	
	TITLE :		Lift Pit Detail - Membrane Termination	
	NUMBER :	SCBWS-D10a(2)	SCALE :	1:5
	DRAWN BY :	NKT	DATE :	11-Aug-2022
			REVISED :	
<p><small>Equus Waterproof Membrane Details are specially drawn for use by Local Authorities, Building Contractors, Equus Applicators, Architects and design professionals. All details are drawn to assist in the development of project specific details. Details may be modified where necessary to accommodate job specific requirements but must be approved by Equus Industries Ltd. All components must be supplied by Equus Industries Ltd. Equus reserves the right to alter or upgrade details at any time without prior notice.</small></p>				
			<p>AUTHORISED DISTRIBUTOR <b>SOPREMA</b></p>	

- ① Concrete Floor
- ② Site-concrete
- ③ EQUUS SOPREMA Self-adhesive membrane Colphene 3000, positioned upside down
- ④ EQUUS SOPREMA Colphene BSW H, Waterproofing membrane
- ⑤ EQUUS SOPREMA Self-adhesive membrane Colphene 3000
- ⑥ DPM

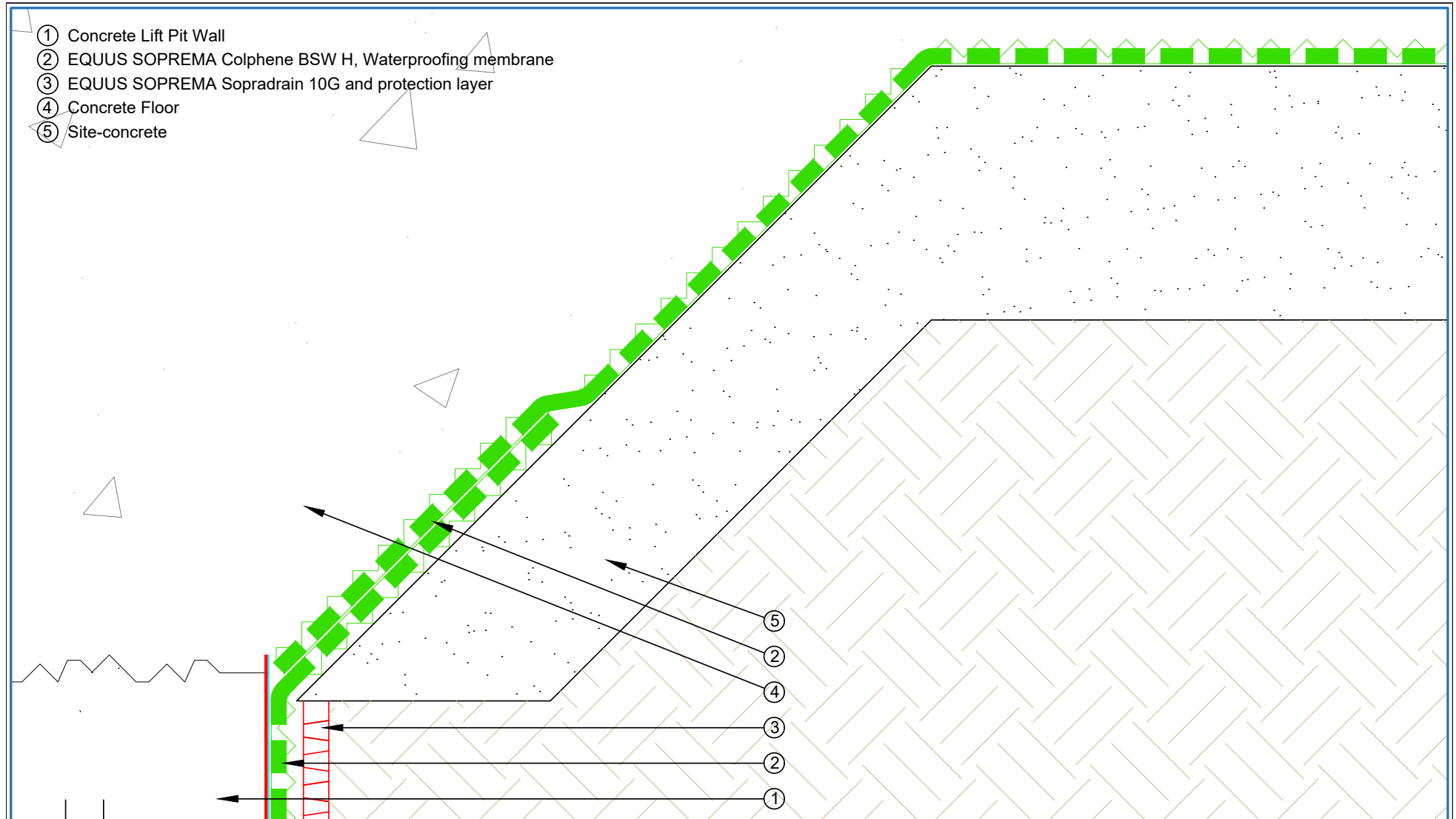


E-mail : [admin@equus.co.nz](mailto:admin@equus.co.nz)  
Web : [www.equus.co.nz](http://www.equus.co.nz)

PROJECT :	Belowgrade Waterproofing Detail - Colphene 3000		
TITLE :	Lift Pit Detail - Membrane and DPM		
NUMBER :	SCBWS-D10a(3)	SCALE :	1:5
DRAWN BY :	NKT	DATE :	11-Aug-2022
		REVISED :	

Equus Waterproof Membrane Details are specially drawn for use by Local Authorities, Building Contractors, Equus Applicators, Architects and design professionals. All details are drawn to assist in the development of project specific details. Details may be modified where necessary to accommodate job specific requirements but must be approved by Equus Industries Ltd. All components must be supplied by Equus Industries Ltd. Equus reserves the right to alter or upgrade details at any time without prior notice.





- ① Concrete Lift Pit Wall
- ② EQUUS SOPREMA Colphene BSW H, Waterproofing membrane
- ③ EQUUS SOPREMA Sopradrain 10G and protection layer
- ④ Concrete Floor
- ⑤ Site-concrete

- ⑤
- ②
- ④
- ③
- ②
- ①

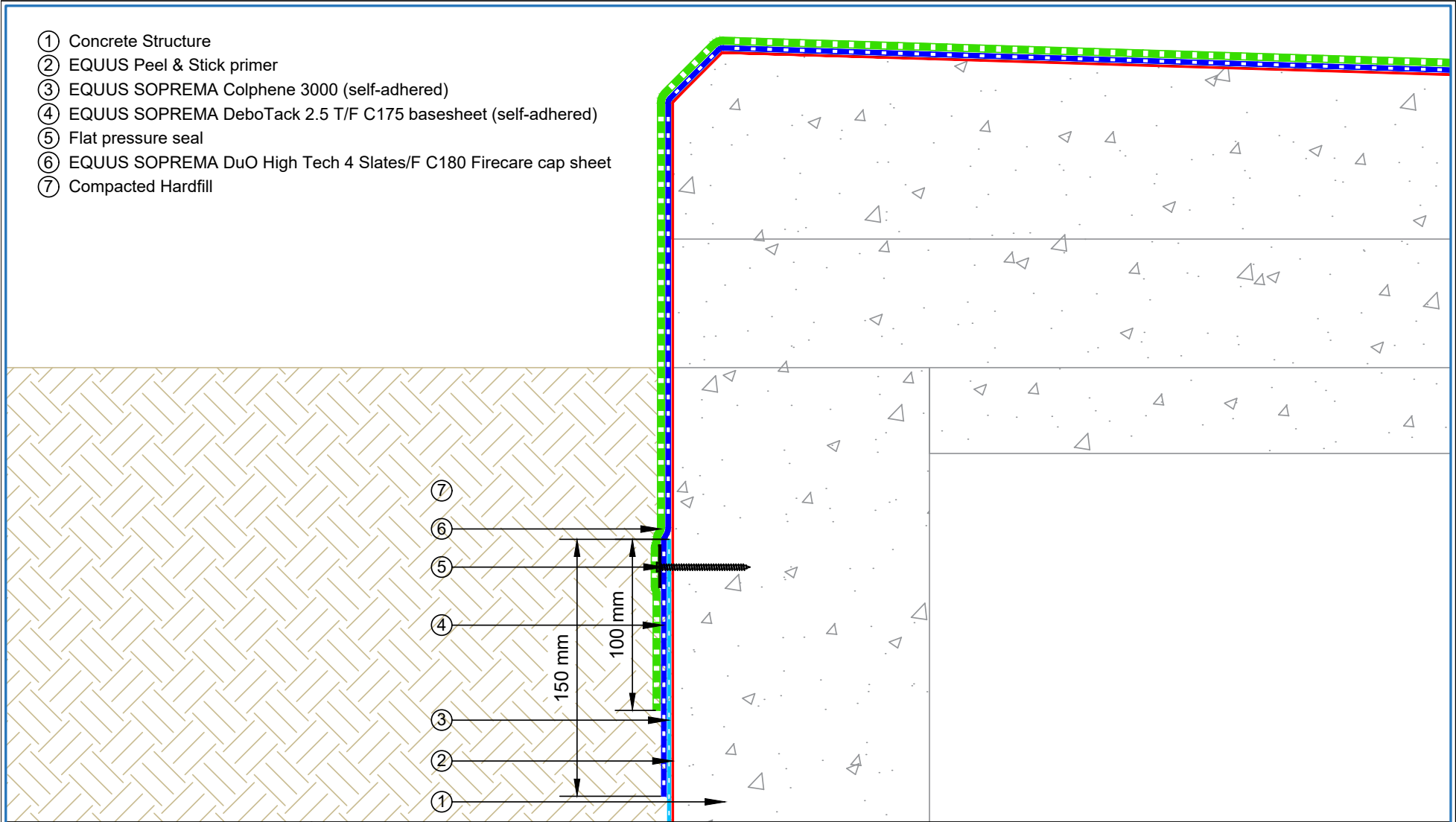
**equus**

E-mail : [admin@equus.co.nz](mailto:admin@equus.co.nz)  
Web : [www.equus.co.nz](http://www.equus.co.nz)

PROJECT :	Belowgrade Waterproofing Detail - Colphene 3000		
TITLE :	Lift Pit Detail - Membrane connection		
NUMBER :	SCBWS-D10a(4)	SCALE :	1:2
DRAWN BY :	NKT	DATE :	11-Aug-2022
REVISED :			
<p><small>Equus Waterproof Membrane Details are specially drawn for use by Local Authorities, Building Contractors, Equus Applicators, Architects and design professionals. All details are drawn to assist in the development of project specific details. Details may be modified where necessary to accommodate job specific requirements but must be approved by Equus Industries Ltd. All components must be supplied by Equus Industries Ltd. Equus reserves the right to alter or upgrade details at any time without prior notice.</small></p>			

AUTHORISED DISTRIBUTOR  
**SOPREMA**

- ① Concrete Structure
- ② EQUUS Peel & Stick primer
- ③ EQUUS SOPREMA Colphene 3000 (self-adhered)
- ④ EQUUS SOPREMA DeboTack 2.5 T/F C175 basesheet (self-adhered)
- ⑤ Flat pressure seal
- ⑥ EQUUS SOPREMA DuO High Tech 4 Slates/F C180 Firecare cap sheet
- ⑦ Compacted Hardfill



E-mail : [admin@equus.co.nz](mailto:admin@equus.co.nz)  
Web : [www.equus.co.nz](http://www.equus.co.nz)

PROJECT :	Belowgrade Waterproofing Detail - Colphene 3000		
TITLE :	Podium waterproofing transition detail		
NUMBER :	SCBWS-D11a	SCALE :	1:2
DRAWN BY :	NKT	DATE :	11-Aug-2022
<p><small>Equus Waterproof Membrane Details are specially drawn for use by Local Authorities, Building Contractors, Equus Applicators, Architects and design professionals. All details are drawn to assist in the development of project specific details. Details may be modified where necessary to accommodate job specific requirements but must be approved by Equus Industries Ltd. All components must be supplied by Equus Industries Ltd. Equus reserves the right to alter or upgrade details at any time without prior notice.</small></p>			

AUTHORISED DISTRIBUTOR  
**SOPREMA**