



EQUUS SOPREMA ANTIROCK MEMBRANE

Standard Details



CELEBRATING
40 YEARS
1982-2022



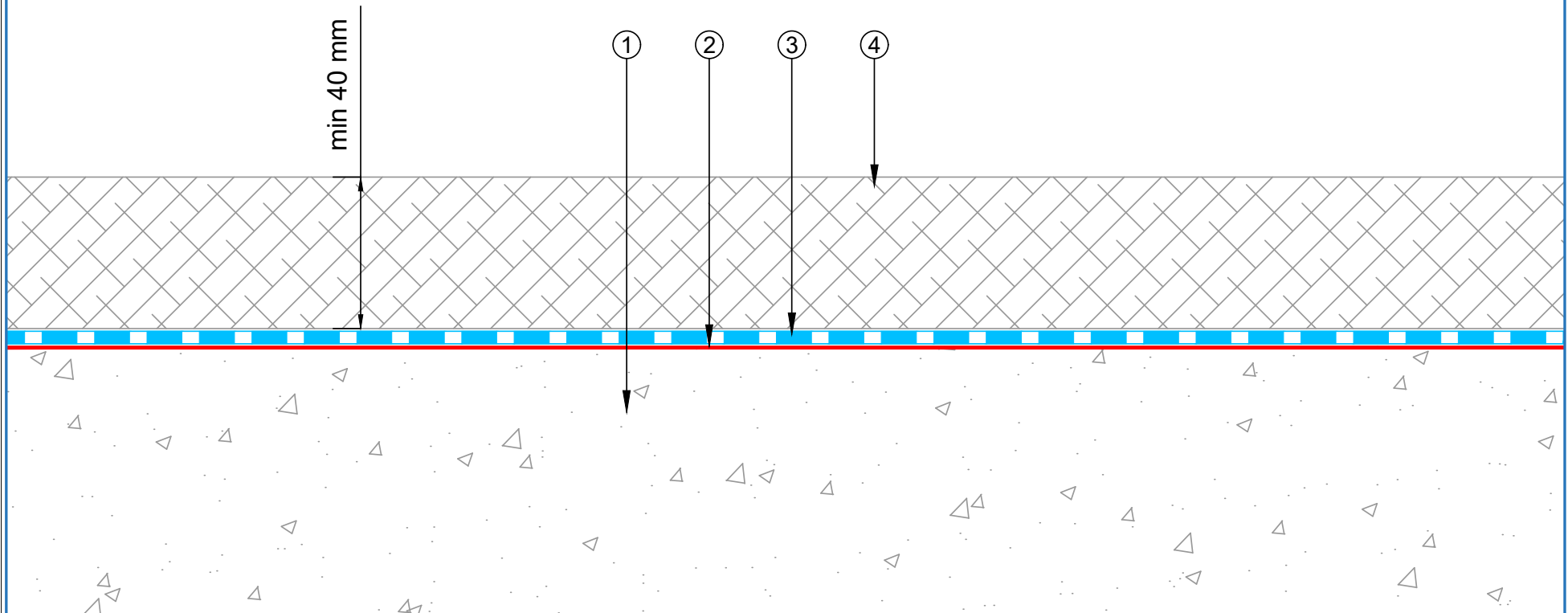
OCTOBER 2023

CONTENTS

SACCC-D1a	Build Up Detail	1
SACCC-D2a	Parapet Detail	2
SACCC-D3a	Drainage Detail	3
SACCC-D4a	Wheel Stops Fixing Detail	4
SACCC-D5a	Pipe Penetration	5

Note: Contact Equus or Soprema to check the asphalt compatibility with the Antirock membrane.
 Minimum thickness for asphalt cover is 40mm for light vehicular traffic. Final thickness depends on asphalt type and specification.

- ① Concrete Deck
- ② EQUUS SOPREMA ANTIROCK primer
- ③ EQUUS SOPREMA ANTIROCK
- ④ Asphalt



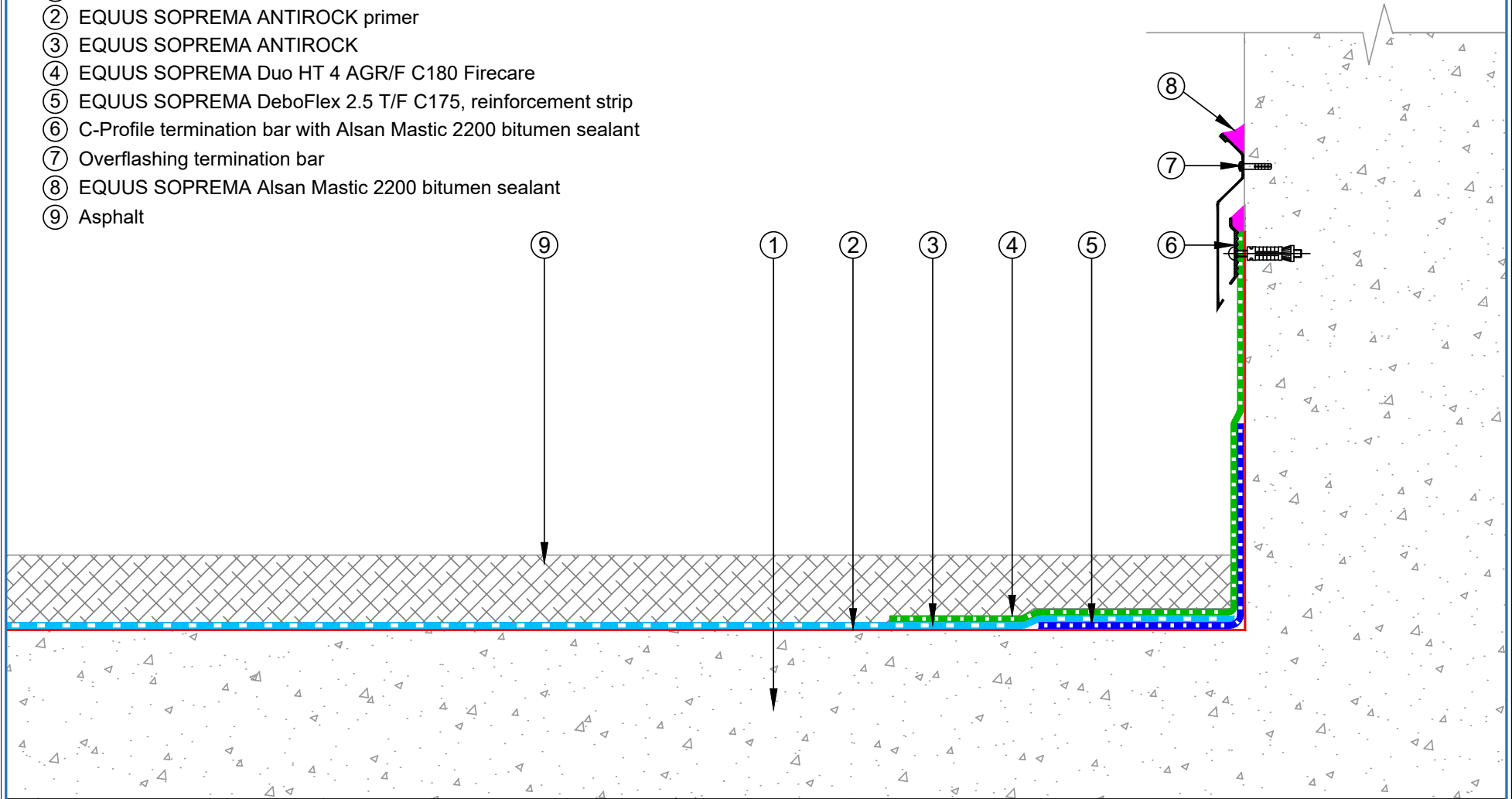
E-mail : admin@equus.co.nz
 Web : www.equus.co.nz



PROJECT :	ANTIROCK Standard Detail		
TITLE :	Build up		
NUMBER :	SACCC-D1	SCALE :	NTS
DRAWN BY :	NKT	DATE :	10-May-2023
		REVISED :	

Equus Waterproof Membrane Details are specially drawn for use by Local Authorities, Building Contractors, Equus Applicators, Architects and design professionals. All details are drawn to assist in the development of project specific details. Details may be modified where necessary to accommodate job specific requirements but must be approved by Equus Industries Ltd. All components must be supplied by Equus Industries Ltd. Equus reserves the right to alter or upgrade details at any time without prior notice.

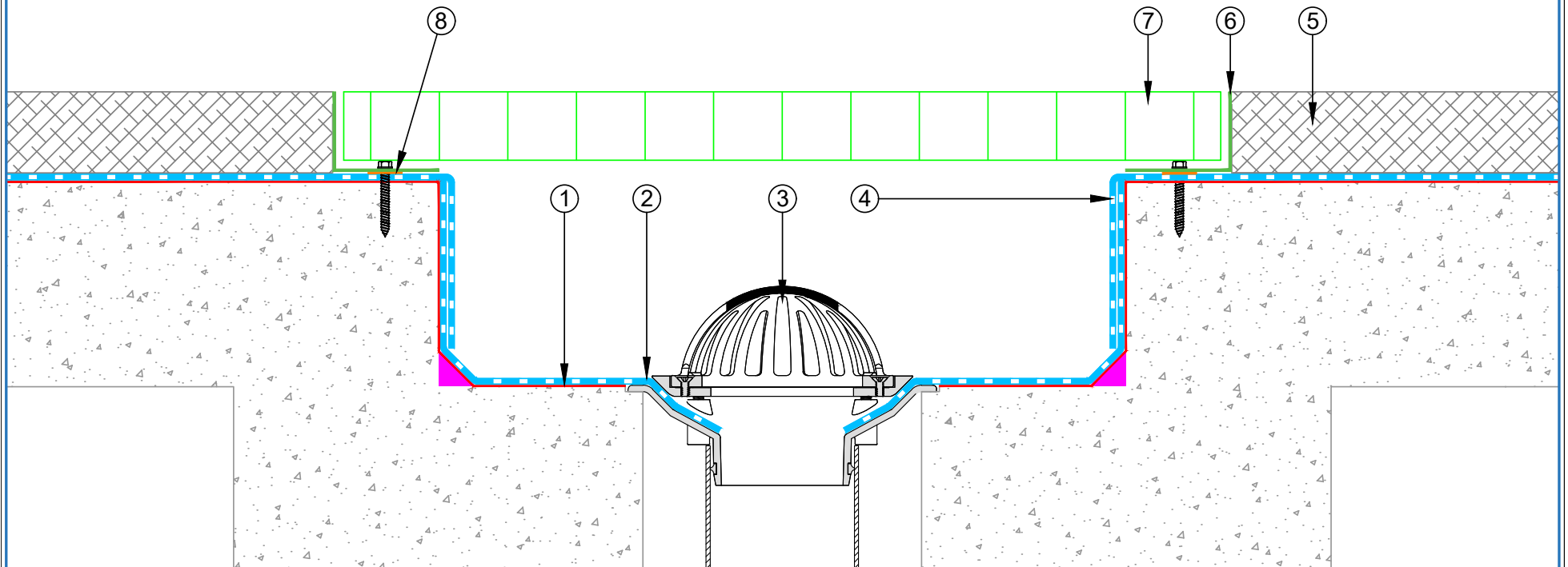


- ① Concrete Deck
- ② EQUUS SOPREMA ANTIROCK primer
- ③ EQUUS SOPREMA ANTIROCK
- ④ EQUUS SOPREMA Duo HT 4 AGR/F C180 Firecare
- ⑤ EQUUS SOPREMA DeboFlex 2.5 T/F C175, reinforcement strip
- ⑥ C-Profile termination bar with Alsan Mastic 2200 bitumen sealant
- ⑦ Overflashing termination bar
- ⑧ EQUUS SOPREMA Alsan Mastic 2200 bitumen sealant
- ⑨ Asphalt



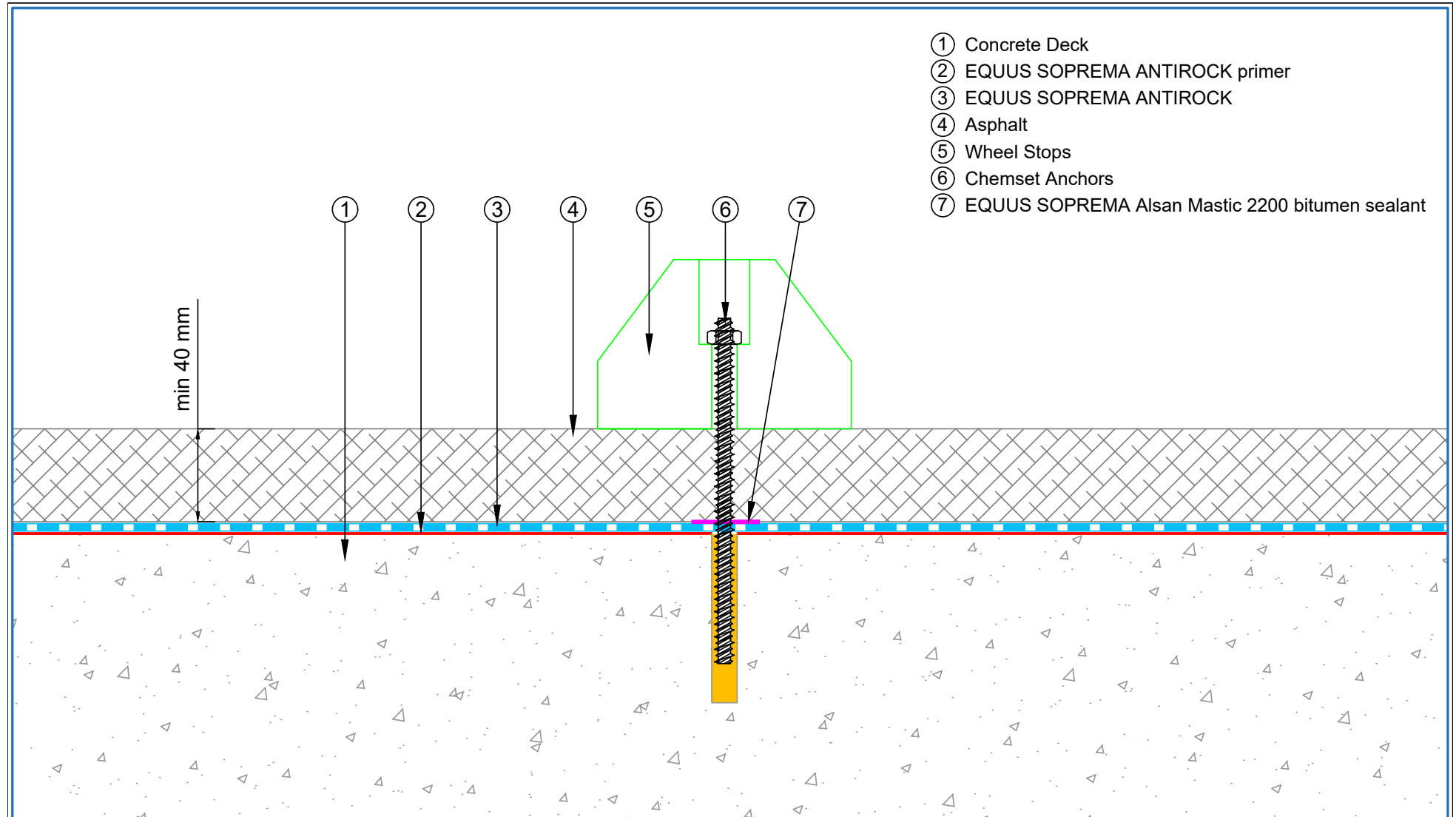
 E-mail : admin@equus.co.nz Web : www.equus.co.nz	PROJECT :		ANTIROCK Standard Detail		 AUTHORISED DISTRIBUTOR SOPREMA	
	TITLE :		Parapet Detail			
	NUMBER :		SACCC-D2a	SCALE :		NTS
	DRAWN BY :		NKT	DATE :		10-May-2023
				REVISED :		
<p><small>Equus Waterproof Membrane Details are specially drawn for use by Local Authorities, Building Contractors, Equus Applicators, Architects and design professionals. All details are drawn to assist in the development of project specific details. Details may be modified where necessary to accommodate job specific requirements but must be approved by Equus Industries Ltd. All components must be supplied by Equus Industries Ltd. Equus reserves the right to alter or upgrade details at any time without prior notice.</small></p>						

- ① EQUUS SOPREMA ANTIROCK primer
- ② EQUUS SOPREMA ANTIROCK
- ③ EQUUS Allproof Dome Clamp Ring Drain
- ④ EQUUS SOPREMA ANTIROCK as separate piece
- ⑤ Asphalt
- ⑥ L-angle
- ⑦ Cast iron grate
- ⑧ Neoprene Washer



PROJECT :	ANTIROCK Standard Detail		
TITLE :	Drainage Detail		
NUMBER :	SACCC-D3a	SCALE :	NTS
DRAWN BY :	NKT	DATE :	18-May-2023
		REVISED :	
<small>Equus Waterproof Membrane Details are specially drawn for use by Local Authorities, Building Contractors, Equus Applicators, Architects and design professionals. All details are drawn to assist in the development of project specific details. Details may be modified where necessary to accommodate job specific requirements but must be approved by Equus Industries Ltd. All components must be supplied by Equus Industries Ltd. Equus reserves the right to alter or upgrade details at any time without prior notice.</small>			





- ① Concrete Deck
- ② EQUUS SOPREMA ANTIROCK primer
- ③ EQUUS SOPREMA ANTIROCK
- ④ Asphalt
- ⑤ Wheel Stops
- ⑥ Chemset Anchors
- ⑦ EQUUS SOPREMA Alsan Mastic 2200 bitumen sealant



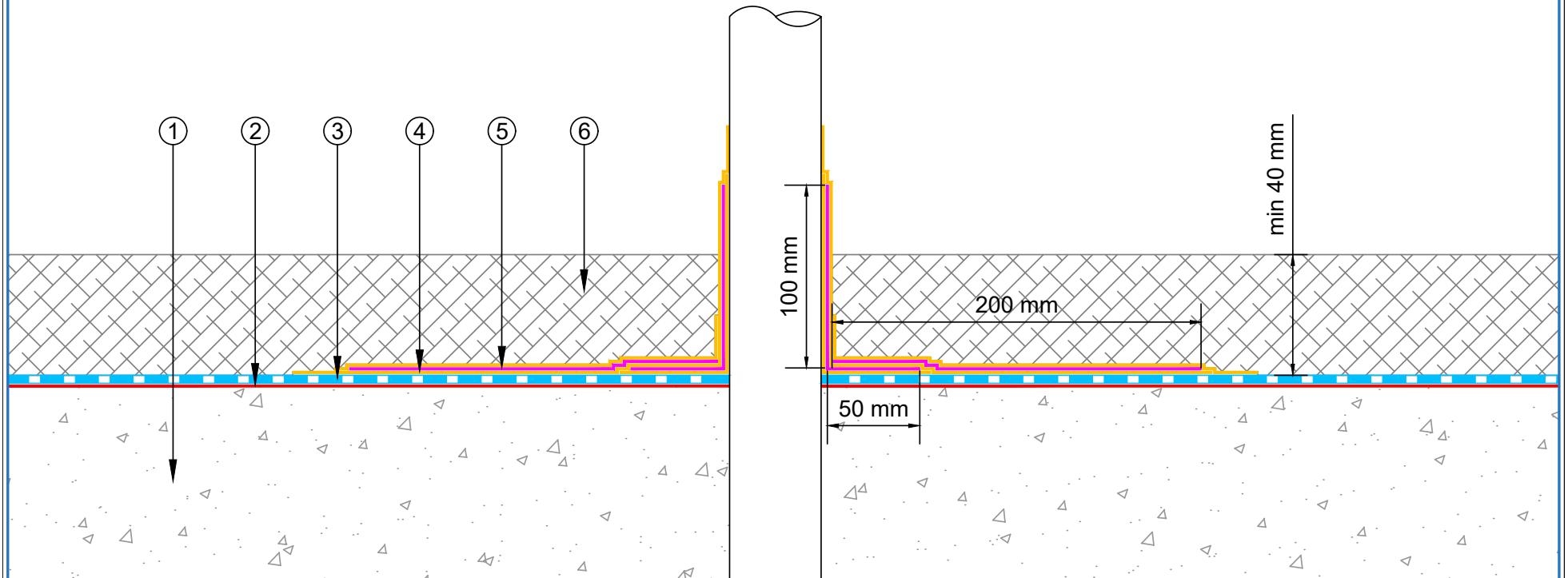
E-mail : admin@equus.co.nz
 Web : www.equus.co.nz



PROJECT :	ANTIROCK Standard Detail		
TITLE :	Wheel Stops fixing Detail		
NUMBER :	SACCC-D4a	SCALE :	NTS
DRAWN BY :	NKT	DATE :	18-May-2023
		REVISED :	
<p>Equus Waterproof Membrane Details are specially drawn for use by Local Authorities, Building Contractors, Equus Applicators, Architects and design professionals. All details are drawn to assist in the development of project specific details. Details may be modified where necessary to accommodate job specific requirements but must be approved by Equus Industries Ltd. All components must be supplied by Equus Industries Ltd. Equus reserves the right to alter or upgrade details at any time without prior notice.</p>			



AUTHORISED DISTRIBUTOR
SOPREMA

- ① Concrete Deck
- ② EQUUS SOPREMA ANTIROCK primer
- ③ EQUUS SOPREMA ANTIROCK, Waterproofing Membrane
- ④ EQUUS SOPREMA ALSAN® FLASHING, Liquid Waterproofing
- ⑤ EQUUS SOPREMA ALSAN FLEECE, Reinforcement Fleece
- ⑥ Asphalt



 E-mail : admin@equus.co.nz Web : www.equus.co.nz	PROJECT :	ANTIROCK Standard Detail			 AUTHORISED DISTRIBUTOR SOPREMA
	TITLE :	Pipe penetration Detail			
	NUMBER :	SACCC-D5a	SCALE :	NTS	
	DRAWN BY :	NKT	DATE :	24-Jul-2023	
Equus Waterproof Membrane Details are specially drawn for use by Local Authorities, Building Contractors, Equus Applicators, Architects and design professionals. All details are drawn to assist in the development of project specific details. Details may be modified where necessary to accommodate job specific requirements but must be approved by Equus Industries Ltd. All components must be supplied by Equus Industries Ltd. Equus reserves the right to alter or upgrade details at any time without prior notice.					