

## EQUUS PRODUCT SYSTEM REFERENCE SHEET



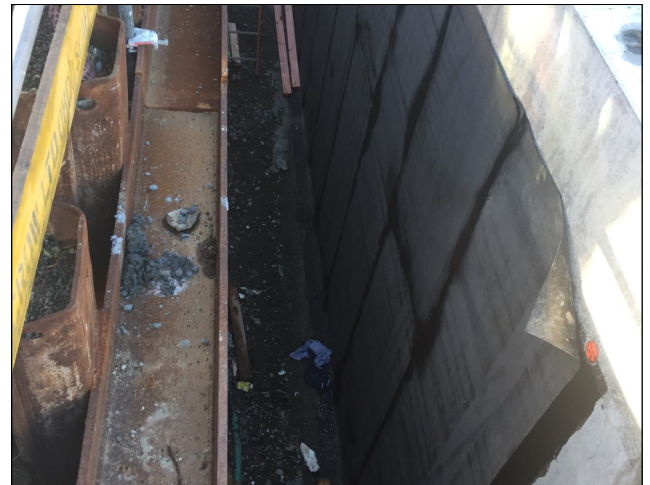
Underground site slab ready for DeboFlex 3.5 Special



DeboFlex 3.5 Special ready for Steel installation



Steel installation on top of DeboFlex 3.5 Special



Walls receiving tanking membrane



Walls being protected by Danodren H15 protection and drainage mat before back filling

**Project Name:** Spark Square

**Location:** Christchurch

**Project Type:** Commercial

**Project Size:** 12,000 sqm

**System:** Equus SOPREMA DeboFlex 3.5 Special  
under slab Wall tanking membrane

**Certified Applicator:** H2OFF Ltd

**Main Contractor:** Naylor Love Construction

**Architect:** Sheppard and Rout

**Completion Date:** 2019

**Equus Industries Ltd**

Email: [info@equus.nz](mailto:info@equus.nz)

Website: [www.equus.nz](http://www.equus.nz)