

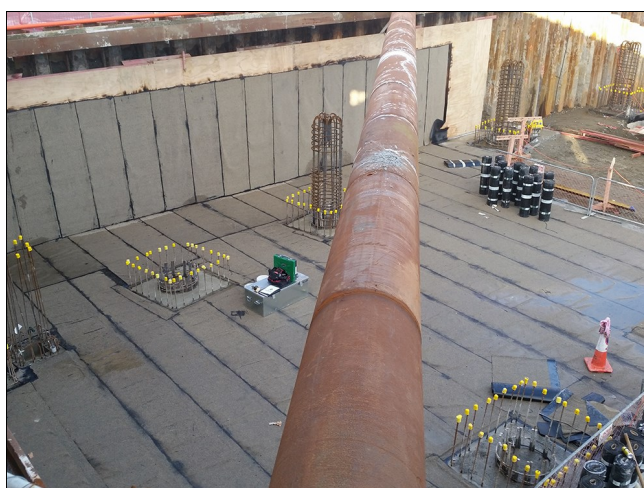
EQUUS PRODUCT SYSTEM REFERENCE SHEET



DeboFlex 3.5 Special to concrete slab and timber lost formwork



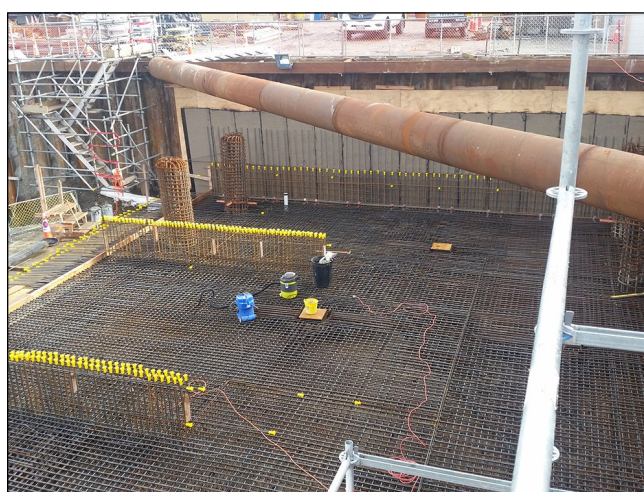
DeboFlex 3.5 Special dressed into pile caps



Completed DeboFlex 3.5 Special ready for steel installation



Reinforcing steel installation



Installed steel, ready for inspection and concrete pour

Project Name: Awly Building

Location: Christchurch

Project Type: Commercial

Project Size: 2000 sqm

System: DeboFlex 3.5 Special Tanking

Certified Applicator: SWP Commercial

Main Contractor: Arrow International

Architect: Warren and Mahoney

Completion Date: 2014

Equus Industries Ltd

Email: info@equus.nz

Website: www.equus.nz