

## EQUUS PRODUCT SYSTEM REFERENCE SHEET



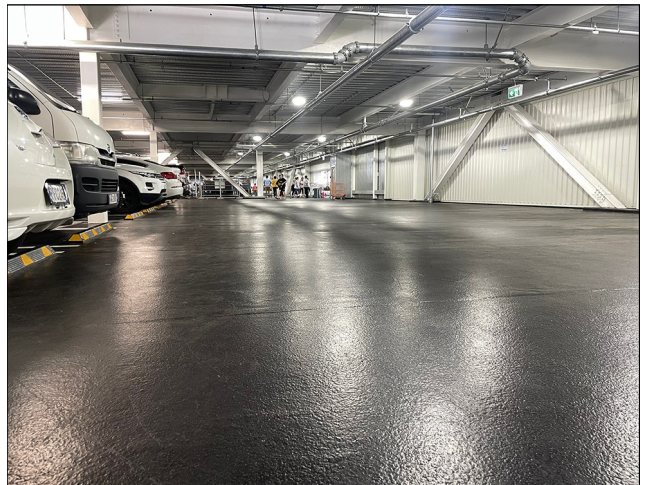
Substrate prepared and primed



Matacryn Manual membrane layer laid



Matacryn Wear layer in foreground



First and second topcoats of Matacryn STC (tinted black) applied



Completed project

**Project Name:** Costco New Zealand

**Location:** Auckland

**Project Type:** Carpark

**Project Size:** 350sqm

**System:** Equus Matacryn Carpark System  
(Tinted Black)

**Architect:** Woodhams Meikle Zhan Architects

**Certified Applicator:** Sansom Construction  
Systems Ltd

**Completion Date:** 2023

**Equus Industries Ltd**

Email: [info@equus.nz](mailto:info@equus.nz)

Website: [www.equus.nz](http://www.equus.nz)