

EQUUS PRODUCT SYSTEM REFERENCE SHEET



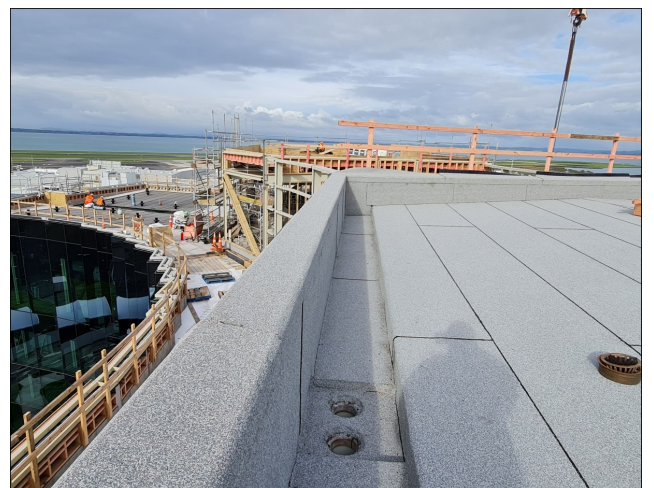
Concrete substrate grind and cured



Primed



Installation of base sheet



Installation of cap sheet



Completed project

Project Name: Pullman Auckland Airport Hotel
- Te Arikiniui

Location: Auckland

Project Type: Accommodation

Project Size: 1500 sqm

System: EQUUS SOPREMA DUO Two-layer Roofing System

Main Contractor: Dominion Constructors Ltd

Architect: Warren & Mahoney Architects

Certified Applicator: Sansom Ltd

Completion Date: 2023

Equus Industries Ltd

Email: info@equus.nz

Website: www.equus.nz