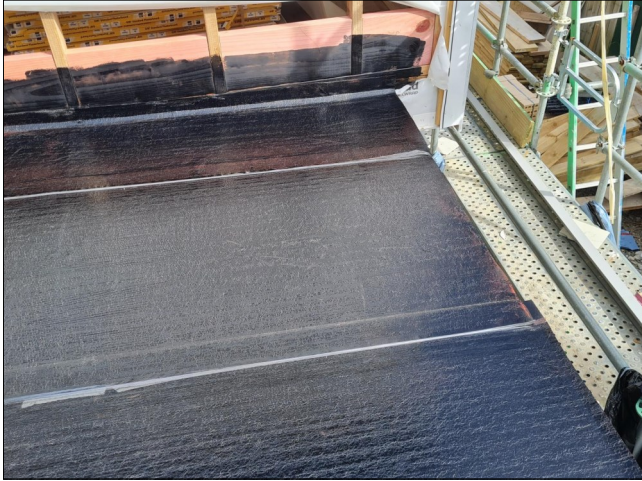
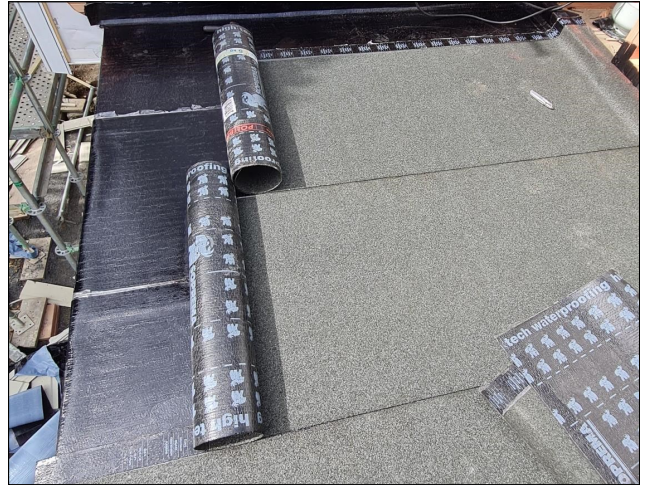


EQUUS PRODUCT SYSTEM REFERENCE SHEET



Equus Novaglass Nova-SK Flameless self adhesive base sheet for quicker installation



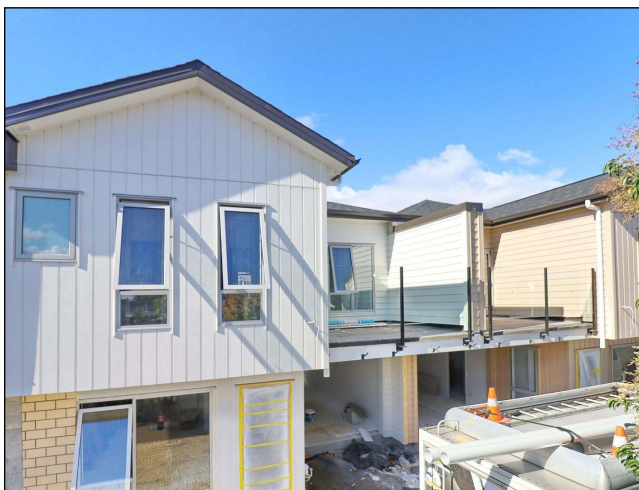
Equus Novaglass Polibit Mineral torch applied cap sheet



Polibit Mineral dark grey cap sheet being applied



Easy malleable APP membranes available in torch applied and self adhered



Project completed

Project Name: Luke Street Townhouses

Location: Ōtāhuhu

Project Type: Townhouse Decks

System: Equus Novaglass Membrane System

Certified Applicator: SJ Waterproofing

Completion Date: 2022

Equus Industries Ltd

Email: info@equus.nz

Website: www.equus.nz