

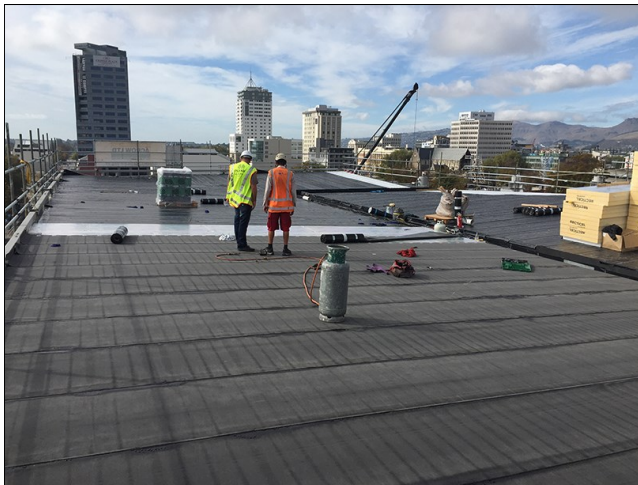
EQUUS PRODUCT SYSTEM REFERENCE SHEET



Installation of vapour barrier over steel substrate



Installation of DuO base sheet over PIR



Installation of DuO base sheet over PIR



Completed DuO cap sheet installation



Completed project

Project Name: Awly Building

Location: Christchurch

Project Type: Commercial

Project Size: 2500 sqm

System: Duotherm Warm Roof System (GW) over Steel Substrate

Certified Applicator: SWP Commercial

Main Contractor: Arrow International

Architect: Warren and Mahoney

Completion Date: 2015

Equus Industries Ltd

Email: info@equus.co.nz

Website: www.equus.nz