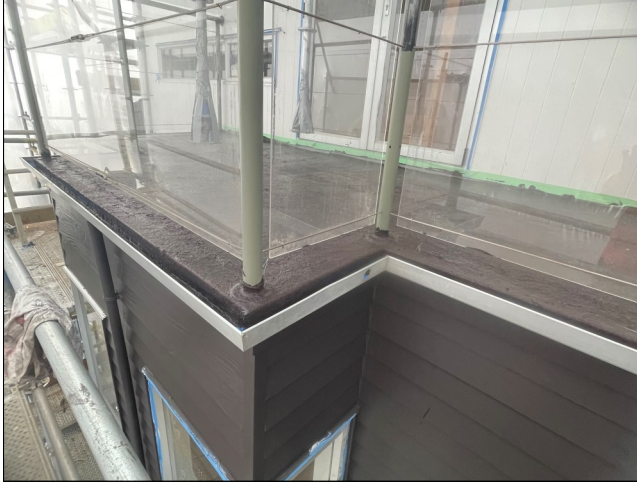


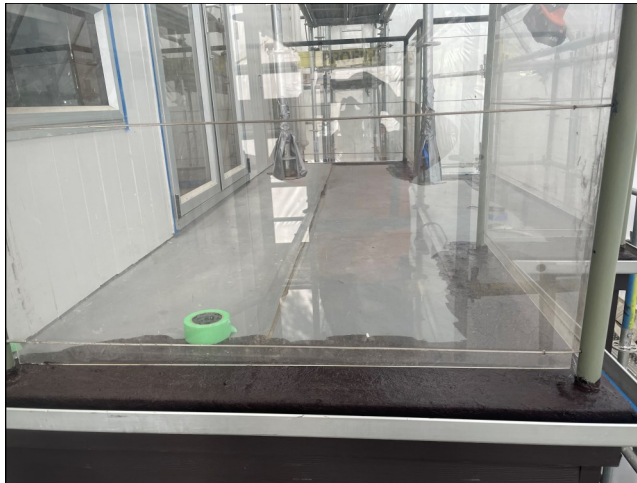
EQUUS PRODUCT SYSTEM REFERENCE SHEET



Waterblasting of existing deck and allowed to dry.



Application of first layer of EASY FLASHING with reinforcement.



Application of second layer of EASY FLASHING.



Application of first layer of topcoat over cured EASY FLASHING.



Final result after applying second layer of topcoat.

Project Name: Herne Bay

Location: Auckland

Project Type: Balcony Refurbishment

System: EQUUS SOPREMA EASY FLASHING with Chevaline Dexx Topcoat

Certified Applicator: Waterproofit Limited

Completion Date: 2023

Equus Industries Ltd

Email: info@equus.nz

Website: www.equus.nz