

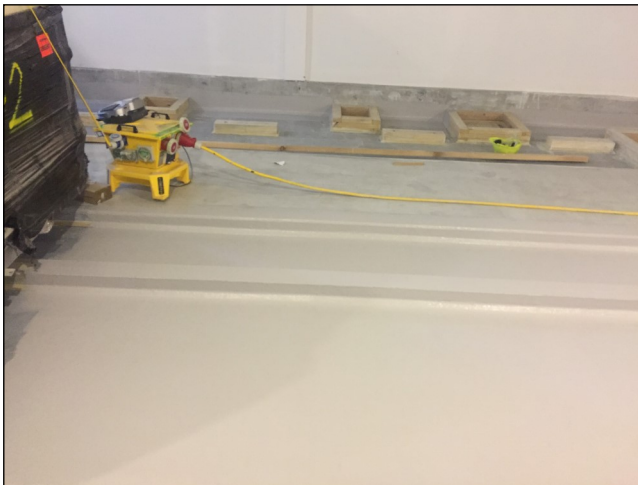
# EQUUS PRODUCT SYSTEM REFERENCE SHEET



Fibreglass reinforcement laid into wet Chevaline Dexx bodycoat



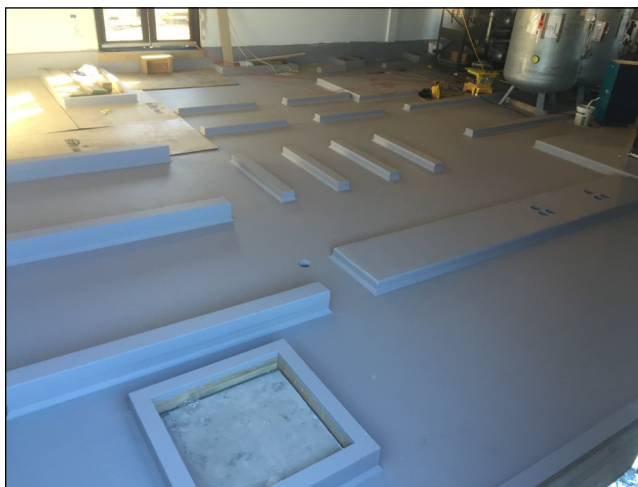
Application of Chevaline Dexx bodycoat



Finished Chevaline Dexx Bodycoat with Fibreglass



Application of Chevaline Dexx Bodycoat to detailing



Finished Chevaline Dexx topcoat application ready for equipment installation

**Project Name:** St George's Hospital, Plant Room

**Location:** Christchurch

**Project Type:** Healthcare

**Project Size:** 250 sqm

**System:** Chevaline Dexx Membrane System on concrete Plant Room floor

**Certified Applicator:** Mulford Holdings Ltd

**Main Contractor:** Higgs Construction

**Architect:** Trengrove Architects

**Completion Date:** 2016

**Equus Industries Ltd**

PO Box 601, Blenheim, New Zealand

Email: [info@equus.co.nz](mailto:info@equus.co.nz)

Website: [www.equus.co.nz](http://www.equus.co.nz)