

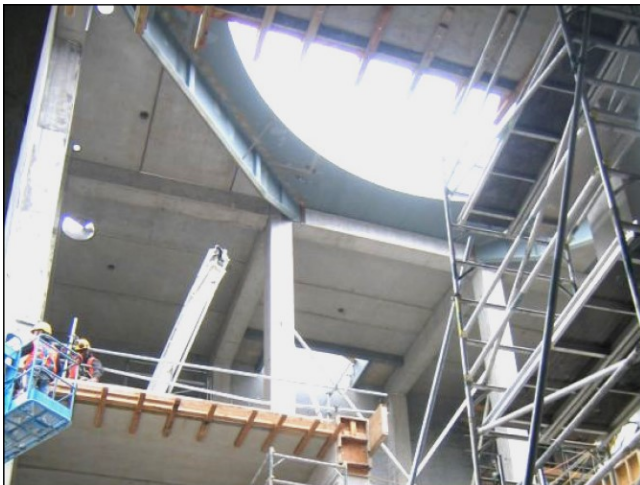
EQUUS PRODUCT SYSTEM REFERENCE SHEET



Chevaline Colourglaze to interior walls



Coating application



Steel roof structure



Chevaline Colourglaze to exterior



Completed project

Project Name: Edendale Dryer Towers

Location: Edendale, Southland

Project Type: Dairy Factory

Project Size: 200,000sqm including four Dryer Towers

System: Equus Hygiene Coating Systems

Main Contractor: Naylor Love Construction

Completion Date: 1993-2009

Equus Industries Ltd

PO Box 601, Blenheim, New Zealand

Email: info@equus.co.nz

Website: www.equus.co.nz