



**EQUUS SOPREMA  
EASY FLASHING  
OVER EXISTING BITUMINOUS MEMBRANES**  
Information Pack



CELEBRATING  
**40** YEARS  
1982-2022

**MAY 2023**





## CONTENTS

Brochure	3
Technical Data Sheets	5
Standard Details	10

**Note:** Specifications, Safety Data Sheet, QA Forms are available upon request.



# EQUUS SOPREMA EASY FLASHING

Easy waterproofing: liquid applied membrane



**SOPREMA EASY FLASHING** is an environmentally friendly, water-based product. It can be used to waterproof, protect and seal cracks of substrates such as plywood, metal and cementitious surfaces. **EASY FLASHING** can also be used to repair old, deteriorated bituminous waterproofing layers and to encapsulate old asbestos roofs. It adheres to all kinds of insulating panels, to concrete, or bitumen-based waterproofing systems.

**EASY FLASHING** is a ready-to-use, semi-dense, thixotropic black paste. Formulated with a water-based bitumen emulsion, selected elastomeric resins and special additives – this product offers excellent watertightness, protection, adhesion, and elasticity.

**EASY FLASHING** is easy to use and is a great option for those looking for a simple and safe solution for surfaces no longer able to defend the building against water.



Roof repairs

## Key Benefits:

- Watertight and ponding resistant
- Environmentally friendly (water-based)
- Easy to apply, and adheres to a variety of substrates, even when damp
- Waterproofs and protects against atmospheric agents and UV rays
- Crack resistant at low temperatures and drip resistant at high temperatures





## INSTALLATION

- **Surface Preparation**  
Clean the surfaces to be treated with EASY FLASHING. Dust, loose, and crumbling parts must be removed.
- **Application**  
Apply EASY FLASHING with brush, roller or spray with suitable airless equipment. It is recommended never to exceed the thickness of 1 mm for each coat, to avoid cracking of the product and long drying times.
- EASY FLASHING can be applied on wet surfaces as long as there is no stagnation of water.
- EASY FLASHING can be applied in temperatures from +5°C to +40°C.
- To limit heat absorption, EASY FLASHING can be topcoated with two coats of Chevaline Dexx Topcoat. Ensure membrane is completely cured before topcoat application.



### Equus SOPREMA Technical Support:

- Project specific specifications and details
- Expert Technical Assistance
- On-site quality assurance
- Nationwide network of Certified Applicators
- Warranties available

### Equus Southern

Unit 6/100 Fitzgerald Ave,  
Christchurch

PO Box 19 846  
Christchurch

Ph: 03 353 2434

southern@equus.nz

### Equus Central

45 Hutt Rd, Petone,  
Wellington

PO Box 38 636  
Wellington Mail Centre

Ph: 04 576 0333

central@equus.nz

### Equus Northern

211 Archers Rd, Wairau Valley,  
Glenfield, Auckland

PO Box 101 423  
North Shore Mail Centre

Ph: 09 415 4314

northern@equus.nz

# EASY FLASHING

## Description:

EASY FLASHING is a thixotropic waterproofing coating, formulated with bitumen in water emulsion, selected elastomeric resins and special additives, multipurpose with high adhesiveness.

## Field of Application:

EASY FLASHING is used:

- As a waterproofing liquid membrane when the application of polymer-bitumen membranes should be difficult or when the use of the flame should be forbidden. It can be applied both vertically and horizontally.
- Suitable for waterproofing of foundation walls and foundations.
- Laying of insulation panels.
- For quick local repairs.
- Restores the waterproofing effect on balconies and terraces with no need to destroy the old pavement.
- Prepare a waterproofing and gripping base for the subsequent bonding of tiles with the appropriate cement-based adhesives (category C according to EN 12004).
- If diluted at 50%, the product can be used as a dust-proof primer.

Excellent adhesion on the following surfaces:

- Bituminous membranes with sand or self protected with slates
- Concrete
- Different types of metal surfaces (pipelines, eaves, IBCs)
- Fibrocement
- Plasterboard
- Wood
- Ceramic pavements
- Glass

## Advantages:

- Excellent elasticity
- Waterproofs and protects from atmospheric agents and from UV rays
- Resistance against corrosive action of many acids
- Encourages the cold laying
- Perfect grip on different materials
- Compatible with cementitious adhesives
- Long-lasting product

- Odourless and non-flammable product
- Non-toxic, solvent free
- Does not crack at low temperatures and does not pour at high temperatures.

## Standards & Certifications:

EASY FLASHING is CE marked in accordance with:

- EN 1504-2:2004 - Surface protection system for concrete.
- EN 14891:2012 - Dispersion liquid applied water impermeable products for use beneath ceramic tiling bonded with adhesive.

## Method of Use:

### Operating conditions

It is recommended to apply the product with an ambient temperature not lower than +5 °C and when there are no climatic conditions of fog, rain and frost, avoiding extreme situations of cold and heat.

### Surface preparation

Before applying the product, make sure that the non-coherent parts, or non-adherent parts, paints, rust, dust, disarming oils are removed and carefully clean surfaces that need to be solid and dry.

The efficiency of the water outflow must be ascertained (slopes, positioning and size of the drains).

This product can also be applied on wet surfaces, but it is necessary there is no water stagnation.

### Preparation

Mix the product thoroughly until the mixture is fully homogenous before using.

### Application

EASY FLASHING can be applied by roller, brush, spray, spatula or notched squeegee.

It is generally applied in two coats. To facilitate the application on large surfaces it is advisable to dilute up to a maximum of 10% water. Apply the second coat fresh on fresh if the first has been reinforced, otherwise after complete drying of the first, after 24-48 hours.

On surfaces larger than 10 sqm or stressed supports, we recommend reinforcing EASY FLASHING with the special Alsan Voile-P fabric embedded in the first still fresh coat.

### Cleaning tools

After use, clean the tools with water and, if the product has dried, it is advisable to remove it with hot water or the most common synthetic thinners.

**Consumption:**

- Between 0.6-0.9 kg/sqm per coat, the consumption of the product varies according to the substrate and thickness desired. To obtain a dried film of 1mm, the quantity of product used will be about 1.5 kg/sqm. Approx. 2kg/sqm if the appropriate Alsan Voile-P reinforcement fabric is used.
- Between 400-700 g/sqm if used as an adhesive for spot bonding of insulation panels.

**Additional Information:**

- It is recommended to apply the product with an ambient temperature no lower than +5 °C and when there are no weather conditions of fog, rain and frost, avoiding in any case extreme situations of cold and heat and high humidity.
- Particular attention should be paid to the application of the product on some new bituminous surfaces so as to avoid the risk that hydrocarbons still present in the support may compromise the correct adhesion of the product.
- In the realisation of waterproof protections executed with EASY FLASHING, or in any case in applications between materials of different nature, structural joints, or in the presence of important cracks it is recommended to use the Voile-P reinforcement impregnating it completely in the first coat still fresh.
- Do not exceed the quantity and drying times recommended for each coat in order to guarantee the correct drying of the product in all its thickness.

- Temperatures over 35 °C could accelerate the drying of the product, compromising its workability.
- In the case of waterproofing walls against the ground with EASY FLASHING, suitable mechanical protection must be provided mainly for backfill operations.
- EASY FLASHING can be walked on occasionally in the case of occasional maintenance.
- To improve the durability of EASY FLASHING it is recommended painting with suitable protective paints.
- Do not use EASY FLASHING on supports subject to counter-thrust or strong water pressure.

For more information, ask for the Safety Data Sheet.

**General Warnings:**

The information provided in this technical data sheet is valid only for the product supplied by Soprema srl. Please note that the mentioned data might differ from those valid in other countries. The above data, in particular the advice on the processing and method of use of our products, are the result of our knowledge and experience considering normal application cases. The above information regarding the application of the products is provided according to science and consciousness. However, it is up to the applicator to determine the suitability of the product based on the objective requirements and conditions of the job site. The product is subject to revision if necessary for technological progress or product improvement.

**Packaging & Storage:**

EASY FLASHING	
Packaging	- 310 ml plastic cartridges in boxes of 24 pieces - 5, 20 kg metal cans
Colour	Black (when dried)
Storage	Storage up to 12 months from the production date in the original packaging, in a cool environment, protected from frost and direct sunlight. EASY FLASHING fears frost, do not expose the packages to a temperature below +5 °C; once frozen the product is not recoverable.

**Technical Characteristics:**

Characteristic	Test Method	Performance
Physical form	-	Pasta Tixotropica
Dry residue at 130 °C	EN ISO 3251	53+59%
Viscosity Brookfield (at 20 °C, Impeller n. 6; 10 rpm)	EN ISO 3219	70.000 cP (± 14.000)
Specific weight at 20 °C	EN ISO 2811-1	1.21 kg/l (±0.04)
pH (at 20 °C)	-	8.3+9.0
Flexibility at low temperatures	EN 15813	-30 °C
Dimensional stability at high temperatures	EN 15818	+150 °C
External drying time	-	4 hour
Drying time for finishing covering	-	24+48 hours*

\* Values recorded at a temperature of 23 °C and 50% humidity. The data expressed may vary depending on thickness of the product applied and the specific conditions of the site; temperature, humidity, ventilation, absorbency of the bottom.

The information in this product data sheet is based on our experience and testing. It represents the latest information available at the time of printing, but no guarantee of its accuracy is made or implied, nor responsibility taken for use to which this information may be put. We reserve the right to alter or up-date information parameters and formulations at any time without notice.

**Technical Characteristics:**

Performance Characteristic (UNI EN 1504-2 - C Coverings - Principles: PI MC IR)	Test Method	Performance
Permeability to CO <sub>2</sub>	EN 1062-6	S <sub>D</sub> >50 m
Water vapour permeability	EN ISO 7783	Class I (S <sub>D</sub> <5 m)
Liquid water permeability	EN 1062-3	W < 0.1 kg/sqm x h <sup>0.5</sup>
Tensile bond strength (by pull off)	EN 1542	≥1 N/mm <sup>2</sup>

\* Values recorded at a temperature of 23 °C and 50% humidity. The data expressed may vary depending on thickness of the product applied and the specific conditions of the site; temperature, humidity, ventilation, absorbency of the bottom.

Performance EN 14891 Liquid applied water impermeable products for use beneath ceramic tiling bonded with adhesive	Requirements EN 14891	Product Performance
Initial tensile adhesion	>0.5 N/mm <sup>2</sup>	Passed
Tensile adhesion after water contact	>0.5 N/mm <sup>2</sup>	Passed
Tensile adhesion after heat aging	>0.5 N/mm <sup>2</sup>	Passed
Tensile adhesion after freeze/thaw cycles	>0.5 N/mm <sup>2</sup>	Passed
Tensile adhesion after contact with time lime water	>0.5 N/mm <sup>2</sup>	Passed
Water impermeability	No penetration	Waterproof
Crack Bridging Ability (at 20 °C)	>0.75 mm	Passed
CLASSIFICATION ACCORDING TO EN 14891	Class DM 02	Waterproof product applied in dispersed liquid with improved crack bridging capacity at low temperature (-20 °C)

**Equus Industries Ltd**  
**PO Box 601**  
**Blenheim**  
**Phone: 03 578 0214**  
**Email: admin@equus.nz**  
**Web: www.equus.nz**  
**September 2022**

The information in this product data sheet is based on our experience and testing. It represents the latest information available at the time of printing, but no guarantee of its accuracy is made or implied, nor responsibility taken for use to which this information may be put. We reserve the right to alter or up-date information parameters and formulations at any time without notice.



# Chevaline Dextr Topcoat

Finishing coat for medium traffic Chevaline Dextr surfaces

## Purpose & Areas Of Use:

A highly durable glossy finishing coat for use as an integral part of the Chevaline Dextr System on walkout decks and similar trafficable areas.

## Product:

A tough; flexible; gloss-finish, pigmented polyurethane/acrylic finishing coat. Waterborne for ease of use and formulated for maximum exterior durability, ease of cleaning, water resistance and excellent adhesion.

## Process Compatibility:

Formulated as a finishing coat for the **Chevaline Dextr Flexible Reinforced Roof and Deck Membrane System**.

## Colours:

Available in most standard Equus K, BS2660 and BS5252 colours. May also be matched with other colours but a tinting charge may be applicable.

NB: The use of deep colours in exterior situations is not recommended because of the stress that may be imparted to the building's fabric through excessive heat absorption. Advice should be sought regarding this and special colour matching through your Equus Representative.

## Standard Pack:

4 litre and 15 litre plastic pail.

## Physical Properties:

Liquid Material:  
Solids (% by Volume): 39 approx  
Specific Gravity: 1.1 - 1.2  
Flash Point: None - water based product  
Shelf Life: 3 years in original sealed container, when stored in cool, dry conditions.

Applied Film:  
Flexibility: Passes 3mm mandrel  
Durability: Excellent long term service can be expected. The coating has been specially formulated for maximum UV resistance and weatherability.

Chemical Resistance: Good resistance against general atmospheric pollutants, domestic cleansers and normal household pollutants. Limited resistance to solvents and oils.

Fungus Resistance: **Chevaline Dextr Topcoat** contains a highly effective anti-fungal preparation which does not contain toxic metals or phenols.

Normal Film Thickness: 25-35 microns dft per coat.

## Surface Preparation:

## Previously coated Dextr surfaces (old or new):

1. **Dextr** surfaces overcoated with **Chevaline Colourglaze, Traxx Colourseal** or **Chevaline Dextr Topcoat**, or presently not over-coated. Ensure the surface is clean and dry. If necessary use medium pressure water to ensure the surface is thoroughly clean. Old surfaces, repair any existing mechanical damage with the **Dextr** process prior to recoating.
2. All other surfaces. Clean as in #1 above and apply a test area of **Chevaline Dextr Topcoat** to determine adhesion before proceeding with the complete treatment.

## Priming:

1. New **Dextr**, or existing **Dextr Membrane** finished with **Chevaline Colourglaze, Chevaline Dextr Topcoat** or **Traxx Colourseal**. No priming required.
2. On other deck membrane surfaces. If a test patch, or obvious surface conditions indicate the need to prime, refer to the nearest Equus Office or your Equus Representative for primer recommendation.

## Application Method:

Brush or Roller: Thinning generally not required.  
Spray: Thin up to 30% by volume with clean water.  
Spreading Rate: 9-12 sqm/litre  
Dry Time: Touch dry 1-2 hours  
Through dry 2-4 hours  
Clean Up/Thinning: Clean tap water.

## Maintenance:

**Chevaline Dextr Topcoat** is a low maintenance finish. It is recommended that it be washed at least every three months with a weak (0.1%) neutral detergent and well rinsed with clean water.

As the purpose of **Chevaline Dextr Topcoat** is to protect the underlying membrane and maintain its overall finish, recoating should be timed to occur before damage is caused to the underlying surface. Simply wash with a weak (0.1%) neutral detergent solution, rinse and dry before recoating with **Chevaline Dextr Topcoat**.

## Warranty:

**Chevaline Dextr Topcoat** is an integral component of the **Chevaline Dextr Reinforced Roof and Deck Membrane System** and the Warranty applicable is that of the **Chevaline Dextr System** it is an integral part of.

When **Chevaline Dextr Topcoat** is used to recoat an existing **Chevaline Dextr Membrane** surface; any existing Process Warranty may be reviewed and possibly extended.

## Health and Safety:

Wear barrier cream when handling this product, and cartridge mask and goggles when spraying. It is a waterborne material and therefore is non-flammable. However, it is recommended



**306**

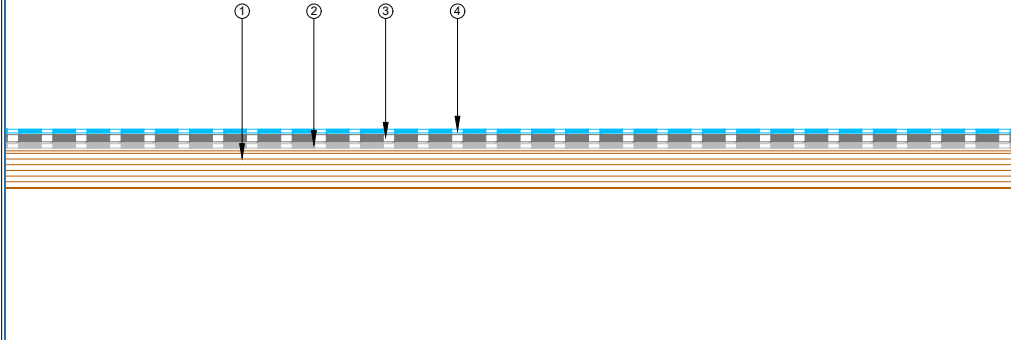
2 pages

PRODUCT  
DATA  
SHEET

NOT TO SMOKE when handling or applying the material. No special storage conditions are required other than protection from frost and prolonged heat.

**Equus Industries Ltd**  
**PO Box 601**  
**Blenheim**  
**Phone: 03 578 0214**  
**E-mail: [admin@equus.nz](mailto:admin@equus.nz)**  
**Web: [www.equus.nz](http://www.equus.nz)**  
**January 2007**

- ① Plywood Deck
- ② Existing Basesheet bitumen waterproofing membrane
- ③ Existing Capsheet bitumen waterproofing membrane
- ④ EQUUS SOPREMA Easy Flashing, waterproofing membrane system

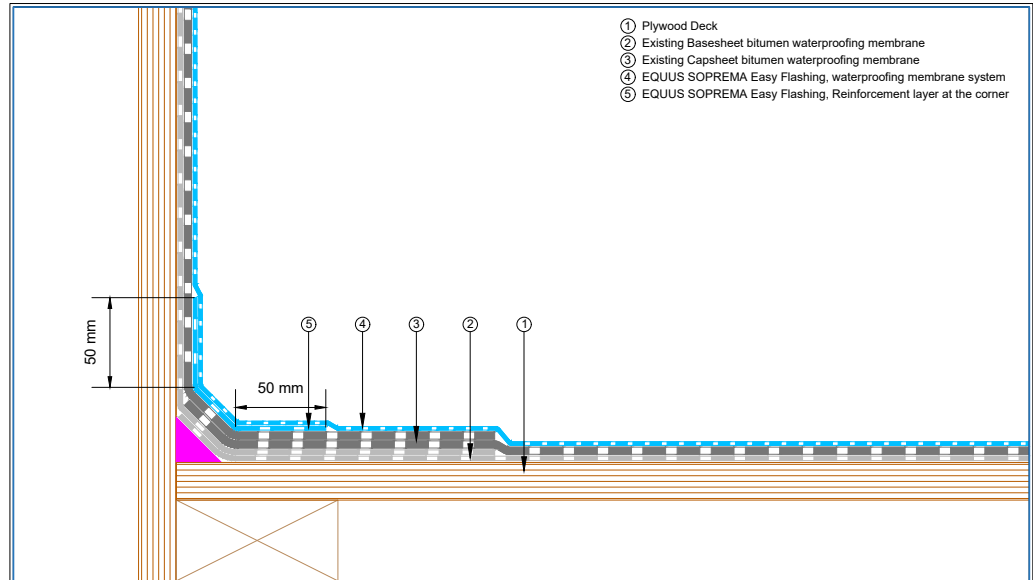


PROJECT :	Cold Roof on Plywood Standard Detail - Easy Flashing		
TITLE :	Roof Built Up Detail		
NUMBER :	SFCRP-D0a	SCALE :	1:2
DRAWN BY :	NKT	DATE :	05-May-2023
		REVISED :	

Equus Waterproof Membrane Details are specially drawn for use by Local Authorities, Building Contractors, Equus Applicators, Architects and design professionals. All details are drawn to assist in the development of project specific details. Details may be modified where necessary to accommodate job specific requirements but must be approved by Equus Industries Ltd. All components must be supplied by Equus Industries Ltd. Equus reserves the right to alter or upgrade details at any time without prior notice.



- ① Plywood Deck
- ② Existing Basesheet bitumen waterproofing membrane
- ③ Existing Capsheet bitumen waterproofing membrane
- ④ EQUUS SOPREMA Easy Flashing, waterproofing membrane system
- ⑤ EQUUS SOPREMA Easy Flashing, Reinforcement layer at the corner

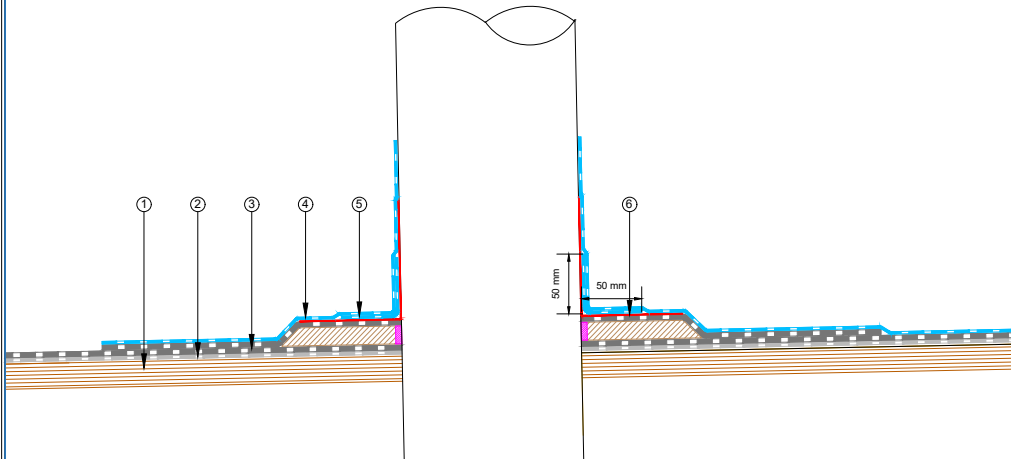


PROJECT :	Cold Roof on Plywood Standard Detail - Easy Flashing		
TITLE :	corner upstand detail		
NUMBER :	SFCRP-D1a	SCALE :	1:2
DRAWN BY :	NKT	DATE :	05-May-2023
		REVISED :	

Equus Waterproof Membrane Details are specially drawn for use by Local Authorities, Building Contractors, Equus Applicators, Architects and design professionals. All details are drawn to assist in the development of project specific details. Details may be modified where necessary to accommodate job specific requirements but must be approved by Equus Industries Ltd. All components must be supplied by Equus Industries Ltd. Equus reserves the right to alter or upgrade details at any time without prior notice.



- ① Plywood Deck
- ② Existing Basesheet bitumen waterproofing membrane
- ③ Existing Capsheet bitumen waterproofing membrane
- ④ EQUUS SOPREMA Easy Flashing, waterproofing membrane system
- ⑤ EQUUS SOPREMA Easy Flashing, Reinforcement layer at the corner
- ⑥ Existing liquid waterproofing membrane

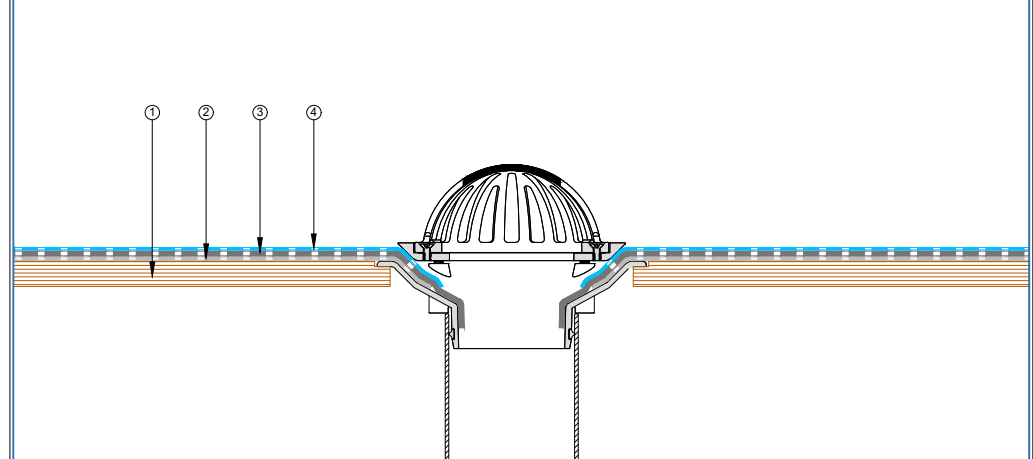


PROJECT :	Cold Roof on Plywood Standard Detail - Easy Flashing		
TITLE :	Pipe penetration detail		
NUMBER :	SFCRP-D2a	SCALE :	NTS
DRAWN BY :	NKT	DATE :	05-May-2023
		REVISED :	

Equus Waterproof Membrane Details are specially drawn for use by Local Authorities, Building Contractors, Equus Applicators, Architects and design professionals. All details are drawn to assist in the development of project specific details. Details may be modified where necessary to accommodate job specific requirements but must be approved by Equus Industries Ltd. All components must be supplied by Equus Industries Ltd. Equus reserves the right to alter or upgrade details at any time without prior notice.



- ① Plywood Deck
- ② Existing Basesheet bitumen waterproofing membrane
- ③ Existing Capsheet bitumen waterproofing membrane
- ④ EQUUS SOPREMA Easy Flashing, waterproofing membrane system



PROJECT :	Cold Roof on Plywood Standard Detail - Easy Flashing		
TITLE :	Roof outlet detail		
NUMBER :	SFCRP-D3a	SCALE :	NTS
DRAWN BY :	NKT	DATE :	05-May-2023
		REVISED :	

Equus Waterproof Membrane Details are specially drawn for use by Local Authorities, Building Contractors, Equus Applicators, Architects and design professionals. All details are drawn to assist in the development of project specific details. Details may be modified where necessary to accommodate job specific requirements but must be approved by Equus Industries Ltd. All components must be supplied by Equus Industries Ltd. Equus reserves the right to alter or upgrade details at any time without prior notice.



- ① Plywood Deck
- ② Existing Basesheet bitumen waterproofing membrane
- ③ Existing Capsheet bitumen waterproofing membrane
- ④ EQUUS SOPREMA Easy Flashing, waterproofing membrane system
- ⑤ EQUUS SOPREMA Easy Flashing, Reinforcement layer at the corner

PROJECT :		Cold Roof on Plywood Standard Detail - Easy Flashing	
TITLE :		Internal gutter parapet detail	
NUMBER :	SFCRP-D4a	SCALE :	1:3 @A4
DRAWN BY :	NKT	DATE :	08-May-2023
		REVISED :	

Equus Waterproof Membrane Details are specially drawn for use by Local Authorities, Building Contractors, Equus Applicators, Architects and design professionals. All details are drawn to assist in the development of project specific details. Details may be modified where necessary to accommodate job specific requirements but must be approved by Equus Industries Ltd. All components must be supplied by Equus Industries Ltd. Equus reserves the right to alter or upgrade details at any time without prior notice.

- ① Plywood Deck
- ② Existing Basesheet bitumen waterproofing membrane
- ③ Existing Capsheet bitumen waterproofing membrane
- ④ EQUUS SOPREMA Easy Flashing, waterproofing membrane system
- ⑤ EQUUS SOPREMA Easy Flashing, Reinforcement layer at the corner

PROJECT :		Cold Roof on Plywood Standard Detail - Easy Flashing	
TITLE :		Internal gutter detail	
NUMBER :	SFCRP-D5a	SCALE :	1:3 @A4
DRAWN BY :	NKT	DATE :	08-May-2023
		REVISED :	

Equus Waterproof Membrane Details are specially drawn for use by Local Authorities, Building Contractors, Equus Applicators, Architects and design professionals. All details are drawn to assist in the development of project specific details. Details may be modified where necessary to accommodate job specific requirements but must be approved by Equus Industries Ltd. All components must be supplied by Equus Industries Ltd. Equus reserves the right to alter or upgrade details at any time without prior notice.

- ① Plywood Deck
- ② Existing Basesheet bitumen waterproofing membrane
- ③ Existing Metal drip edge
- ④ Existing Capsheet bitumen waterproofing membrane
- ⑤ EQUUS SOPREMA Easy Flashing, waterproofing membrane system

PROJECT :		Cold Roof on Plywood Standard Detail - Easy Flashing	
TITLE :		Spouting gutter - Metal drip edge detail	
NUMBER :	SFCRP-D6a	SCALE :	1:2 @A4
DRAWN BY :	NKT	DATE :	08-May-2023
		REVISED :	

Equus Waterproof Membrane Details are specially drawn for use by Local Authorities, Building Contractors, Equus Applicators, Architects and design professionals. All details are drawn to assist in the development of project specific details. Details may be modified where necessary to accommodate job specific requirements but must be approved by Equus Industries Ltd. All components must be supplied by Equus Industries Ltd. Equus reserves the right to alter or upgrade details at any time without prior notice.

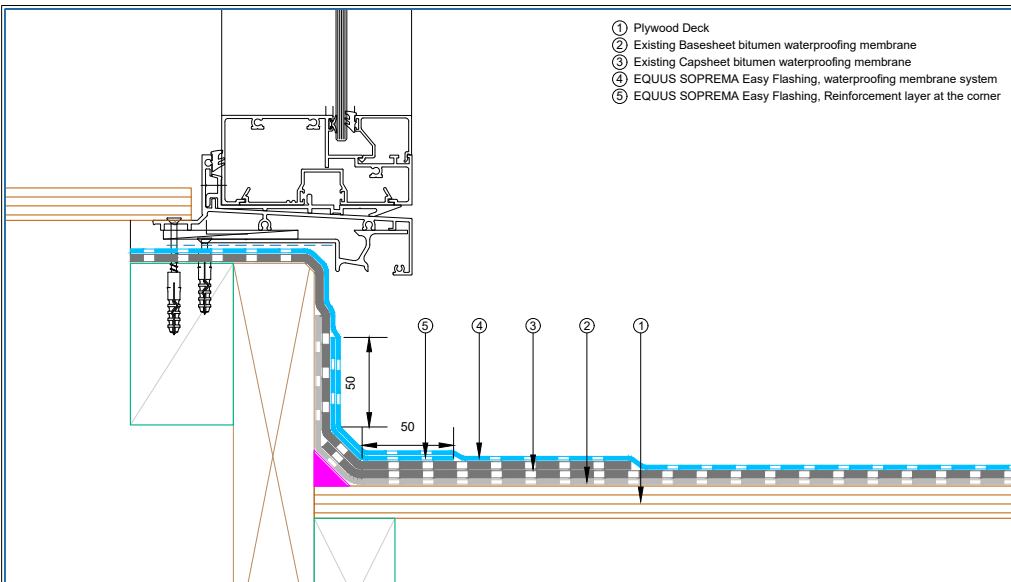
- ① Plywood Deck
- ② Existing Basesheet bitumen waterproofing membrane
- ③ Existing Capsheet bitumen waterproofing membrane
- ④ EQUUS SOPREMA Easy Flashing, waterproofing membrane system
- ⑤ EQUUS SOPREMA Easy Flashing, Reinforcement layer at the corner
- ⑥ Cap Flashing by others

PROJECT :		Cold Roof on Plywood Standard Detail - Easy Flashing	
TITLE :		Parapet with cap flashing detail	
NUMBER :	SFCRP-D7a	SCALE :	1:2 @A4
DRAWN BY :	NKT	DATE :	08-May-2023
		REVISED :	

Equus Waterproof Membrane Details are specially drawn for use by Local Authorities, Building Contractors, Equus Applicators, Architects and design professionals. All details are drawn to assist in the development of project specific details. Details may be modified where necessary to accommodate job specific requirements but must be approved by Equus Industries Ltd. All components must be supplied by Equus Industries Ltd. Equus reserves the right to alter or upgrade details at any time without prior notice.



- ① Plywood Deck
- ② Existing Basesheet bitumen waterproofing membrane
- ③ Existing Capsheet bitumen waterproofing membrane
- ④ EQUUS SOPREMA Easy Flashing, waterproofing membrane system
- ⑤ EQUUS SOPREMA Easy Flashing, Reinforcement layer at the corner



PROJECT :	Cold Roof on Plywood Standard Detail - Easy Flashing		
TITLE :	Window sill transition detail		
NUMBER :	SFCRP-D8a	SCALE :	1:2 @A4
DRAWN BY :	NKT	DATE :	08-May-2023
		REVISED :	

Equus Waterproof Membrane Details are specially drawn for use by Local Authorities, Building Contractors, Equus Applicators, Architects and design professionals. All details are drawn to assist in the development of project specific details. Details may be modified where necessary to accommodate job specific requirements but must be approved by Equus Industries Ltd. All components must be supplied by Equus Industries Ltd. Equus reserves the right to alter or upgrade details at any time without prior notice.



# WHO ARE WE?

Equus Industries provides technical waterproofing solutions for Architects, Engineers, Property Managers, and Contractors in the building industry. One system does not fit all.

Equus can provide complete solutions, systems, specifications, technical support and warranties.

Equus is the Authorised Distributor for SOPREMA in New Zealand. SOPREMA was founded in 1908 in France and has over 100 factories worldwide producing waterproofing materials and thermal insulation.



## Equus Southern

Unit 6/100 Fitzgerald Ave,  
Christchurch

PO Box 19 846  
Christchurch

**Ph:** 03 353 2434

[southern@equus.nz](mailto:southern@equus.nz)

## Equus Central

45 Hutt Rd, Petone,  
Wellington

PO Box 38 636  
Wellington Mail Centre

**Ph:** 04 576 0333

[central@equus.nz](mailto:central@equus.nz)

## Equus Northern

211 Archers Rd, Wairau Valley,  
Glenfield, Auckland

PO Box 101 423  
North Shore Mail Centre

**Ph:** 09 415 4314

[northern@equus.nz](mailto:northern@equus.nz)