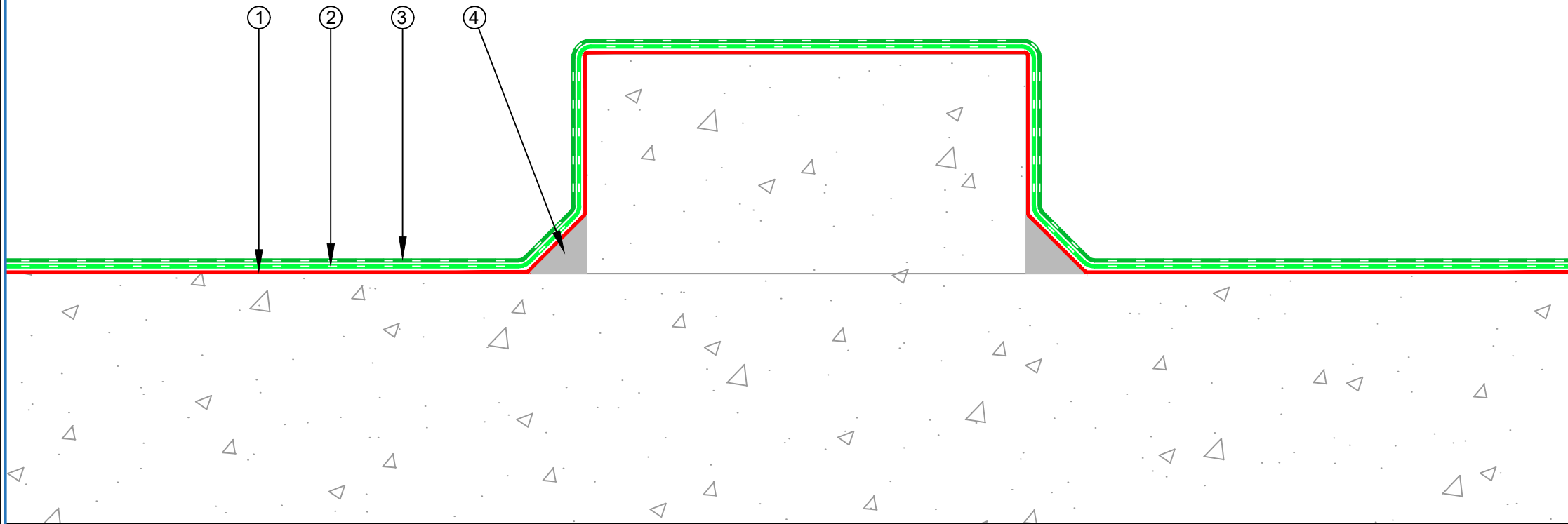


- ① EQUUS Traxx Primer appropriate for substrate
- ② EQUUS Traxx
- ③ EQUUS Traxx
- ④ Mortar fillet



E-mail : info@equus.nz
 Web : www.equus.nz

| | | | |
|------------|--|-----------|-------------|
| PRODUCT : | EQUUS Traxx Flooring on Concrete Substrate Standard Detail | | |
| TITLE : | Concrete plinth detail | | |
| NUMBER : | ETF-D3 | SCALE : | NTS |
| DRAWN BY : | NKT | DATE : | 15-Mar-2024 |
| | | REVISED : | |

Equus standard details are especially drawn for use by Local Authorities, Building Contractors, Equus Applicators, Architects and design professionals. All details are drawn to assist in the development of project-specific details. Details may be modified where necessary to accommodate job-specific requirements but must be approved by Equus Industries Ltd. All components must be supplied by Equus Industries Ltd. Equus reserves the right to alter or upgrade details at any time without prior notice.