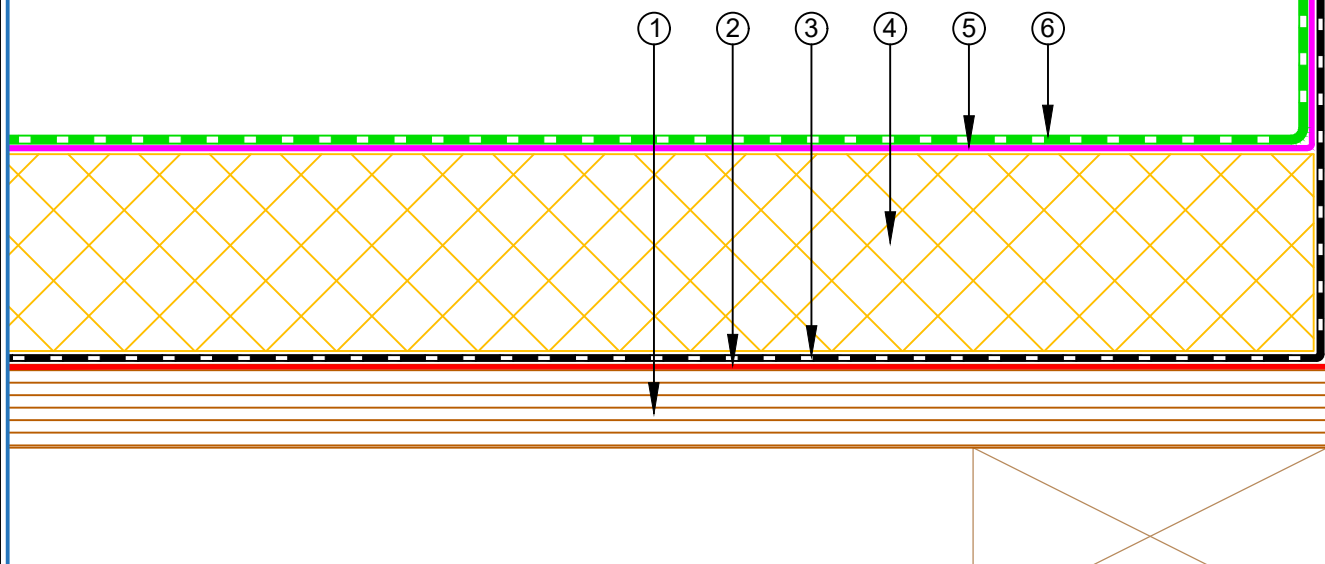
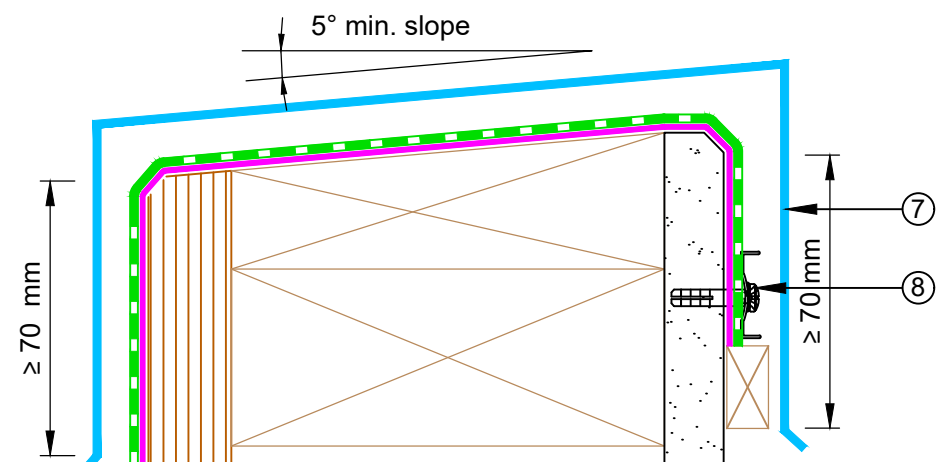


- ① Plywood Deck
- ② EQUUS Sopradere Quick or Aquadere bitumen primer
- ③ EQUUS Colphene 3000 Vapour Barrier
- ④ EQUUS PIR thermal insulation
- ⑤ EQUUS Approved adhesive for TPO single ply waterproofing membrane
- ⑥ EQUUS FLAGON TPO single ply waterproofing membrane
- ⑦ Cap Flashing by others
- ⑧ Termination Bar (required only if not using parapet cap flashing)



PROJECT :	Single ply warm roof system on plywood Standard Detail - TPO		
TITLE :	Parapet with cap flashing		
NUMBER :	STWRP-D4a	SCALE :	1:2
DRAWN BY :	NKT	DATE :	02-Feb-2023
EQUUS Waterproof Membrane Details are specially drawn for use by Local Authorities, Building Contractors, Equus Applicators, Architects and design professionals. All details are drawn to assist in the development of project specific details. Details may be modified where necessary to accommodate job specific requirements but must be approved by Equus Industries Ltd. All components must be supplied by Equus Industries Ltd. Equus reserves the right to alter or upgrade details at any time without prior notice.		REVISED :	

