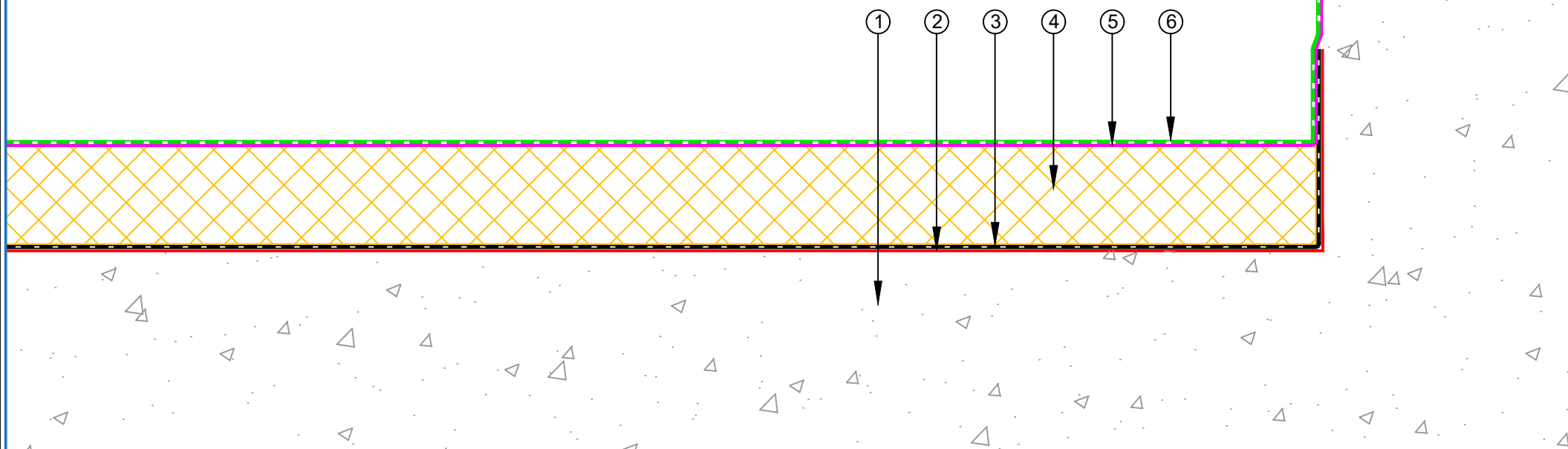
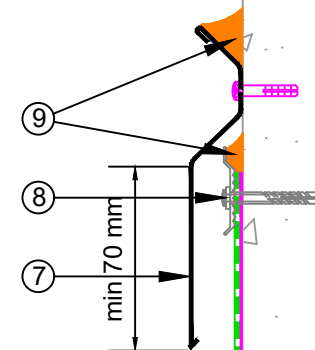


- ① Concrete Deck
- ② EQUUS Sopradere Quick or Aquadere bitumen primer
- ③ EQUUS Colphene 3000 Vapour Barrier
- ④ EQUUS PIR thermal insulation
- ⑤ EQUUS Approved adhesive for TPO single ply waterproofing membrane
- ⑥ EQUUS FLAGON TPO single ply waterproofing membrane
- ⑦ Metal Flashing by others
- ⑧ EQUUS FLAGON Pressure termination bar
- ⑨ EQUUS FLAGON TPO Compatible Sealant



E-mail : admin@equus.co.nz
 Web : www.equus.co.nz

PROJECT :	Single ply warm roof system on Concrete Standard Detail - TPO				
TITLE :	Upstand termination with flashing and pressure bar				
NUMBER :	STWRC-D3b		SCALE :	NTS	
DRAWN BY :	NKT	DATE :	06-Feb-2023	REVISED :	

Equus Waterproof Membrane Details are specially drawn for use by Local Authorities, Building Contractors, Equus Applicators, Architects and design professionals. All details are drawn to assist in the development of project specific details. Details may be modified where necessary to accommodate job specific requirements but must be approved by Equus Industries Ltd. All components must be supplied by Equus Industries Ltd. Equus reserves the right to alter or upgrade details at any time without prior notice.

