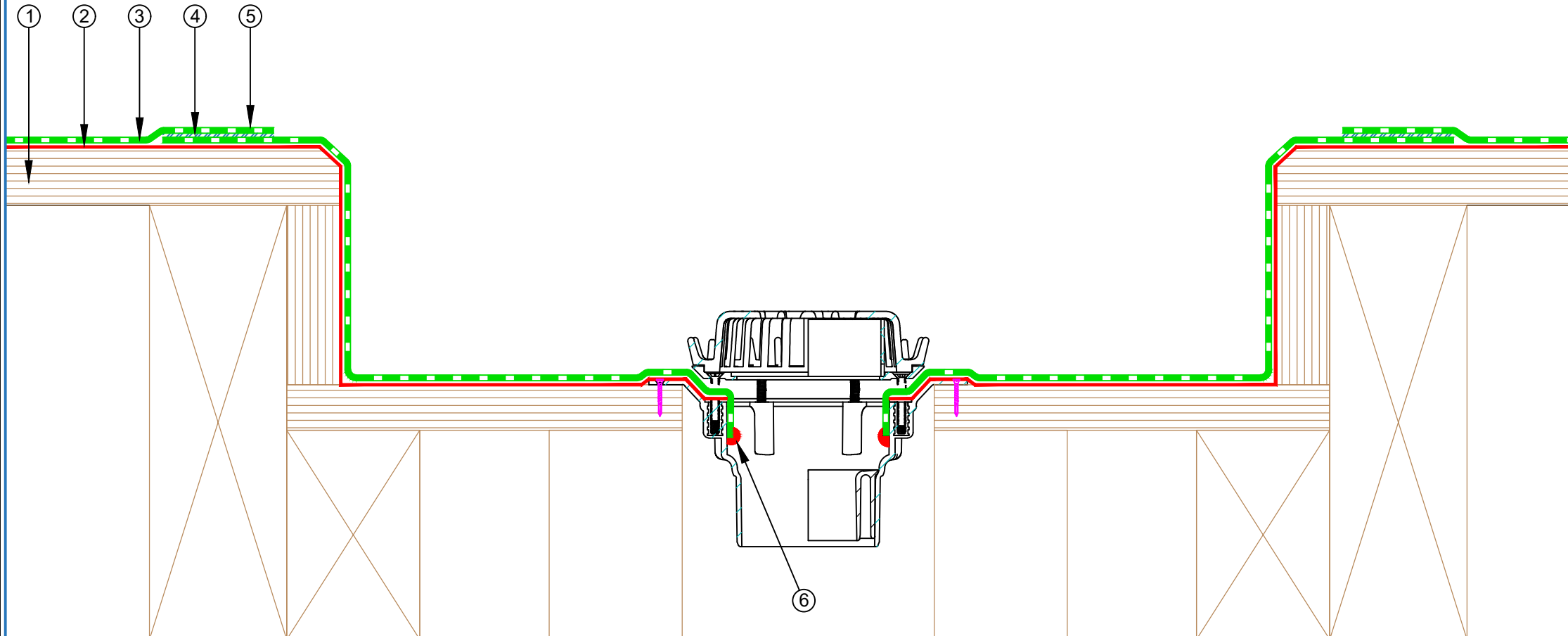


- ① Plywood Deck
- ② EQUUS Approved adhesive for TPO single ply waterproofing membrane
- ③ EQUUS FLAGON TPO single ply waterproofing membrane
- ④ minimum 40 mm welded lap
- ⑤ EQUUS FLAGON TPO as separate piece
- ⑥ EQUUS FLAGON Mastic



E-mail : [admin@equus.co.nz](mailto:admin@equus.co.nz)  
 Web : [www.equus.co.nz](http://www.equus.co.nz)

PROJECT :	Single ply cold roof system on plywood Standard Detail - TPO				
TITLE :	Gutter Outlet Detail				
NUMBER :	STCRP-D9a			SCALE :	NTS
DRAWN BY :	NKT	DATE :	21-Feb-2023	REVISED :	

Equus Waterproof Membrane Details are specially drawn for use by Local Authorities, Building Contractors, Equus Applicators, Architects and design professionals. All details are drawn to assist in the development of project specific details. Details may be modified where necessary to accommodate job specific requirements but must be approved by Equus Industries Ltd. All components must be supplied by Equus Industries Ltd. Equus reserves the right to alter or upgrade details at any time without prior notice.

