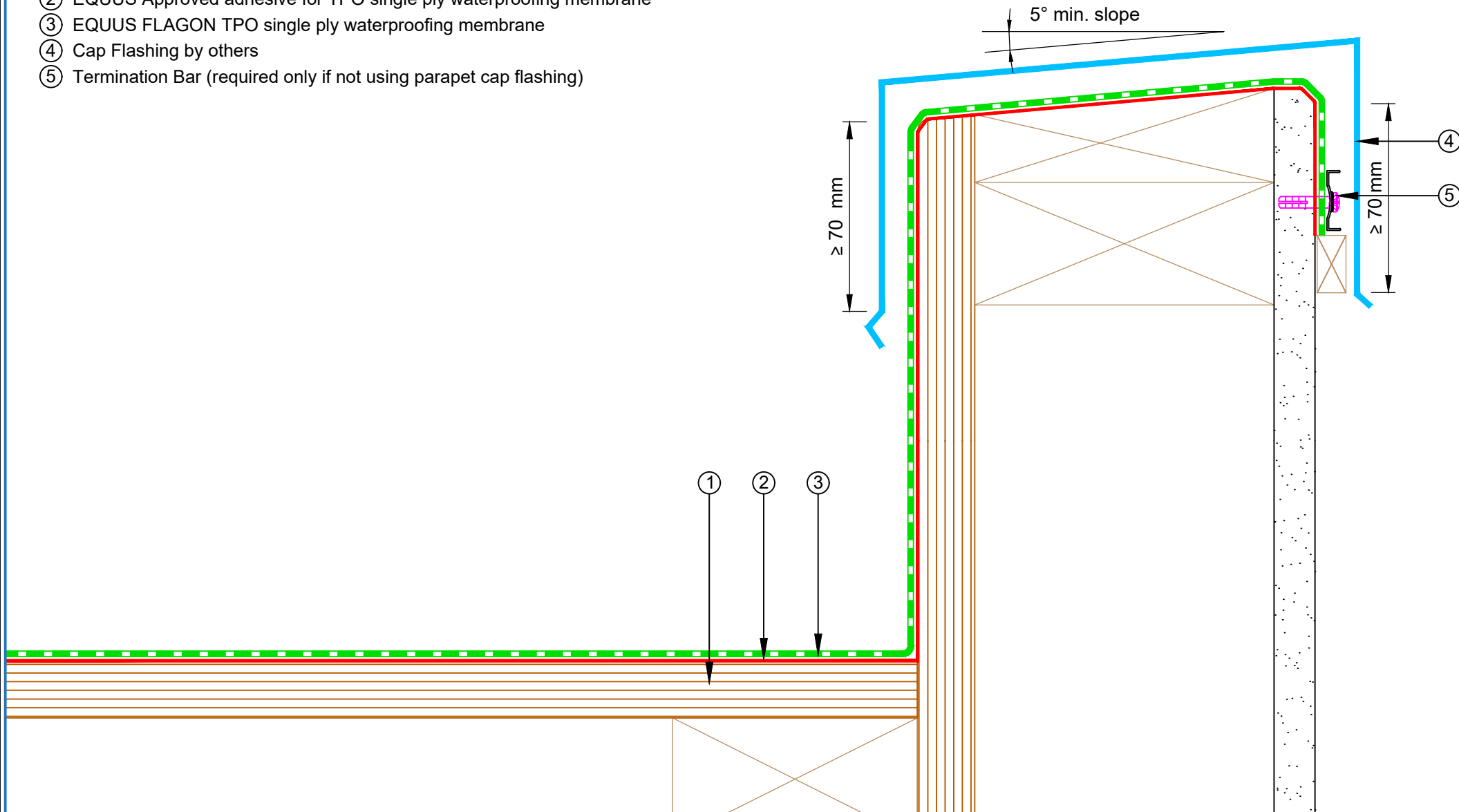


- ① Plywood Deck
- ② EQUUS Approved adhesive for TPO single ply waterproofing membrane
- ③ EQUUS FLAGON TPO single ply waterproofing membrane
- ④ Cap Flashing by others
- ⑤ Termination Bar (required only if not using parapet cap flashing)



| | | | | | |
|---|--|--------|-------------|-----------|-----|
| PROJECT : | Single ply cold roof system on plywood Standard Detail - TPO | | | | |
| TITLE : | Parapet with cap flashing | | | | |
| NUMBER : | STCRP-D4a | | | SCALE : | 1:2 |
| DRAWN BY : | NKT | DATE : | 21-Feb-2023 | REVISED : | |
| Equus Waterproof Membrane Details are specially drawn for use by Local Authorities, Building Contractors, Equus Applicators, Architects and design professionals. All details are drawn to assist in the development of project specific details. Details may be modified where necessary to accomodate job specific requirements but must be approved by Equus Industries Ltd. All components must be supplied by Equus Industries Ltd. Equus reserves the right to alter or upgrade details at any time without prior notice. | | | | | |

