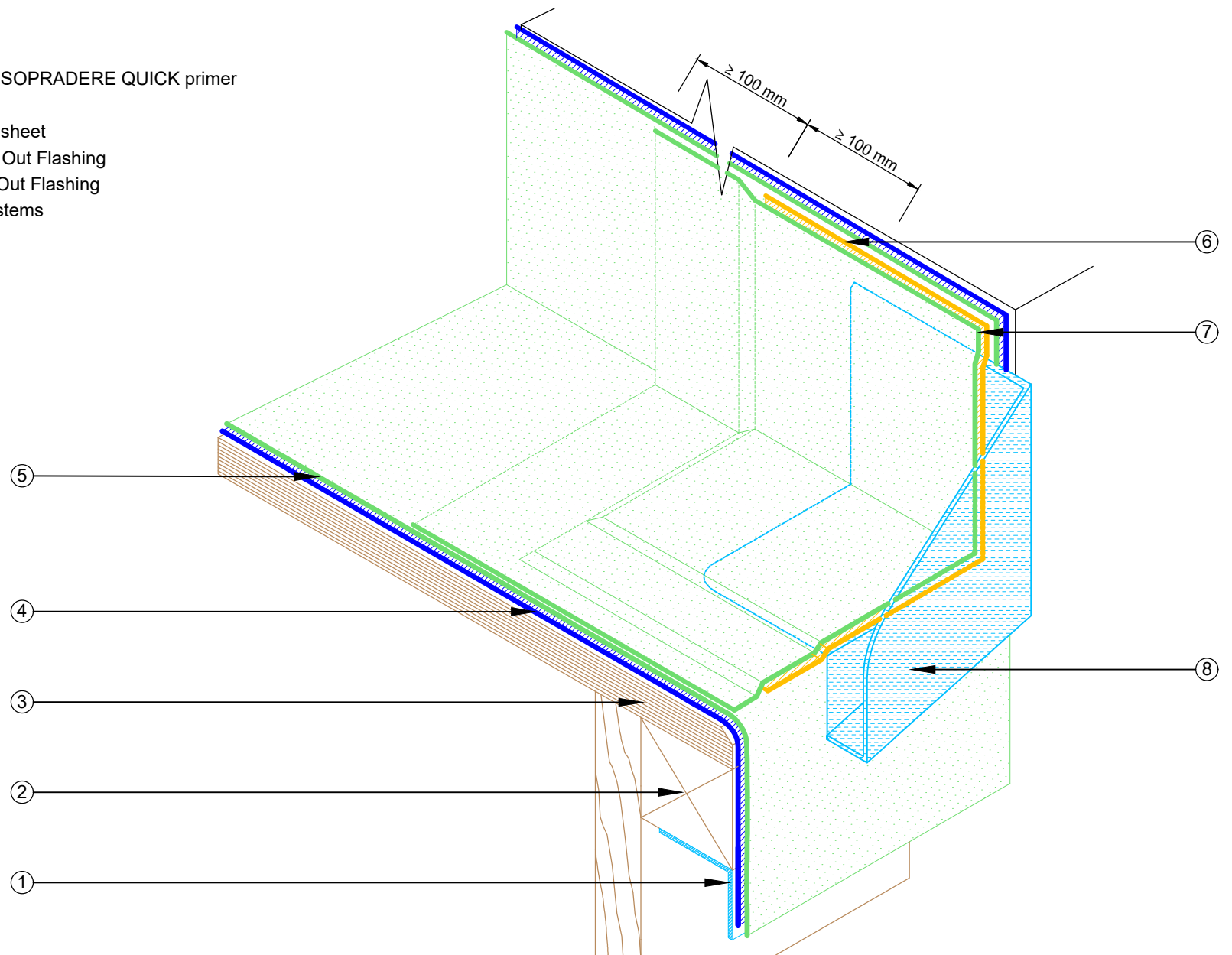


- ① Aluminium Angle Profile 25 x 25 mm
- ② Primered Timber Blocking
- ③ Primered Plywood Roof Deck with EQUUS SOPRADERE QUICK primer
- ④ EQUUS SOPRASUN PLUS 3 base sheet
- ⑤ EQUUS SOPRASUN PLUS MINERAL cap sheet
- ⑥ EQUUS SOPRASUN base sheet over Kick Out Flashing
- ⑦ EQUUS SOPRASUN Cap sheet over Kick Out Flashing
- ⑧ Kick Out Flashing between double layer systems



PROJECT :	Cold Roof on Plywood Standard Detail				
TITLE :	Kick Out Flashing Detail				
NUMBER :	SSCRP-D16a			SCALE :	NTS
DRAWN BY :	NKT	DATE :	15-Jun-2022	REVISED :	

Equus Waterproof Membrane Details are specially drawn for use by Local Authorities, Building Contractors, Equus Applicators, Architects and design professionals. All details are drawn to assist in the development of project specific details. Details may be modified where necessary to accommodate job specific requirements but must be approved by Equus Industries Ltd. All components must be supplied by Equus Industries Ltd. Equus reserves the right to alter or upgrade details at any time without prior notice.

