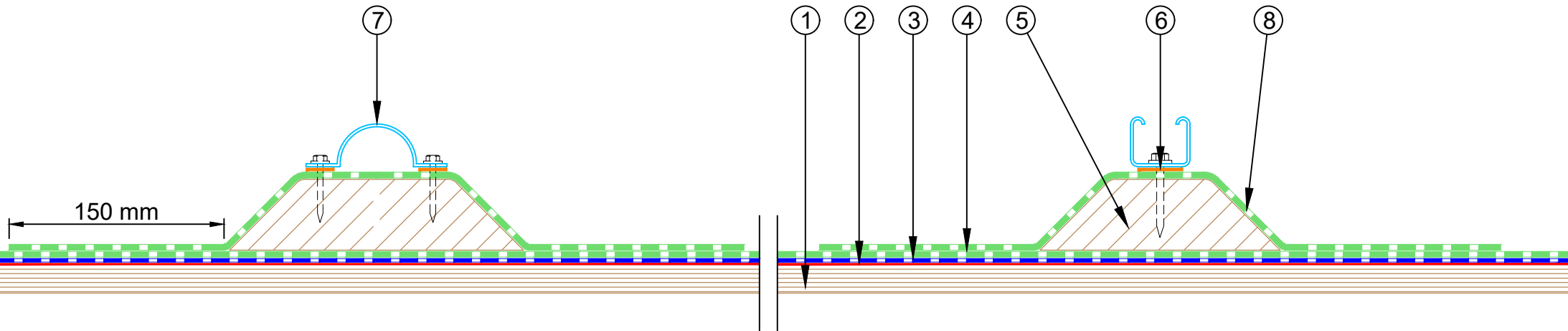


- ① Plywood Deck
- ② EQUUS SOPRADERE QUICK primer
- ③ EQUUS SOPRASUN PLUS 3 base sheet
- ④ EQUUS SOPRASUN PLUS MINERAL cap sheet
- ⑤ Timber Plinth, glued to Capsheet
- ⑥ Clip Ring Fixing with Neoprene Washer into Timber Plinth, but not through Capsheet underneath
- ⑦ Metal Framing Fixing with Neoprene Washer into Timber Plinth, but not through Capsheet underneath
- ⑧ EQUUS SOPRASUN Capsheet, as separate piece over Timber Plinth

### A. Clip Ring

### B. Metal Framing



PROJECT :	Cold Roof on Plywood Standard Detail		
TITLE :	Cable Tray Support Fixing Detail		
NUMBER :	SSCRP-D14a	SCALE :	1:3
DRAWN BY :	NKT	DATE :	15-Jun-2022
		REVISED :	

Equus Waterproof Membrane Details are specially drawn for use by Local Authorities, Building Contractors, Equus Applicators, Architects and design professionals. All details are drawn to assist in the development of project specific details. Details may be modified where necessary to accommodate job specific requirements but must be approved by Equus Industries Ltd. All components must be supplied by Equus Industries Ltd. Equus reserves the right to alter or upgrade details at any time without prior notice.



E-mail : [admin@equus.co.nz](mailto:admin@equus.co.nz)  
 Web : [www.equus.co.nz](http://www.equus.co.nz)

