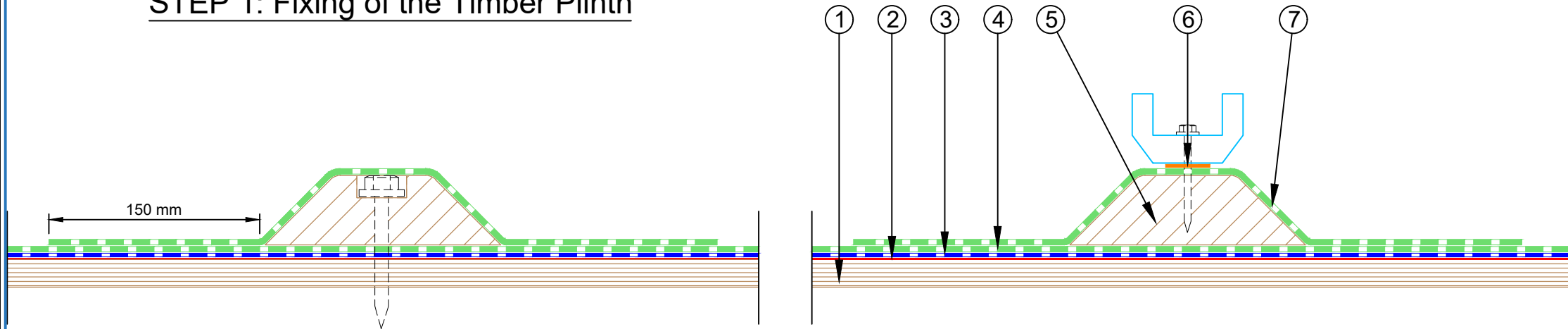


- ① Plywood Deck
- ② EQUUS SOPRADERE QUICK primer
- ③ EQUUS SOPRASUN PLUS 3 base sheet
- ④ EQUUS SOPRASUN PLUS MINERAL cap sheet
- ⑤ Timber Plinth
- ⑥ Monkey Toe Roof Profile Fixing with Neoprene Washer
- ⑦ EQUUS SOPRASUN Capsheet, as separate piece over Timber Plinth

## STEP 2: Fixing of the Monkey Toe Roof Profile

### STEP 1: Fixing of the Timber Plinth



E-mail : [admin@equus.co.nz](mailto:admin@equus.co.nz)  
 Web : [www.equus.co.nz](http://www.equus.co.nz)

PROJECT :	Cold Roof on Plywood Standard Detail				
TITLE :	Monkey Toe Walkway Fixing Detail				
NUMBER :	SSCRP-D12a			SCALE :	1:4
DRAWN BY :	NKT	DATE :	15-Jun-2022	REVISED :	

Equus Waterproof Membrane Details are specially drawn for use by Local Authorities, Building Contractors, Equus Applicators, Architects and design professionals. All details are drawn to assist in the development of project specific details. Details may be modified where necessary to accommodate job specific requirements but must be approved by Equus Industries Ltd. All components must be supplied by Equus Industries Ltd. Equus reserves the right to alter or upgrade details at any time without prior notice.

