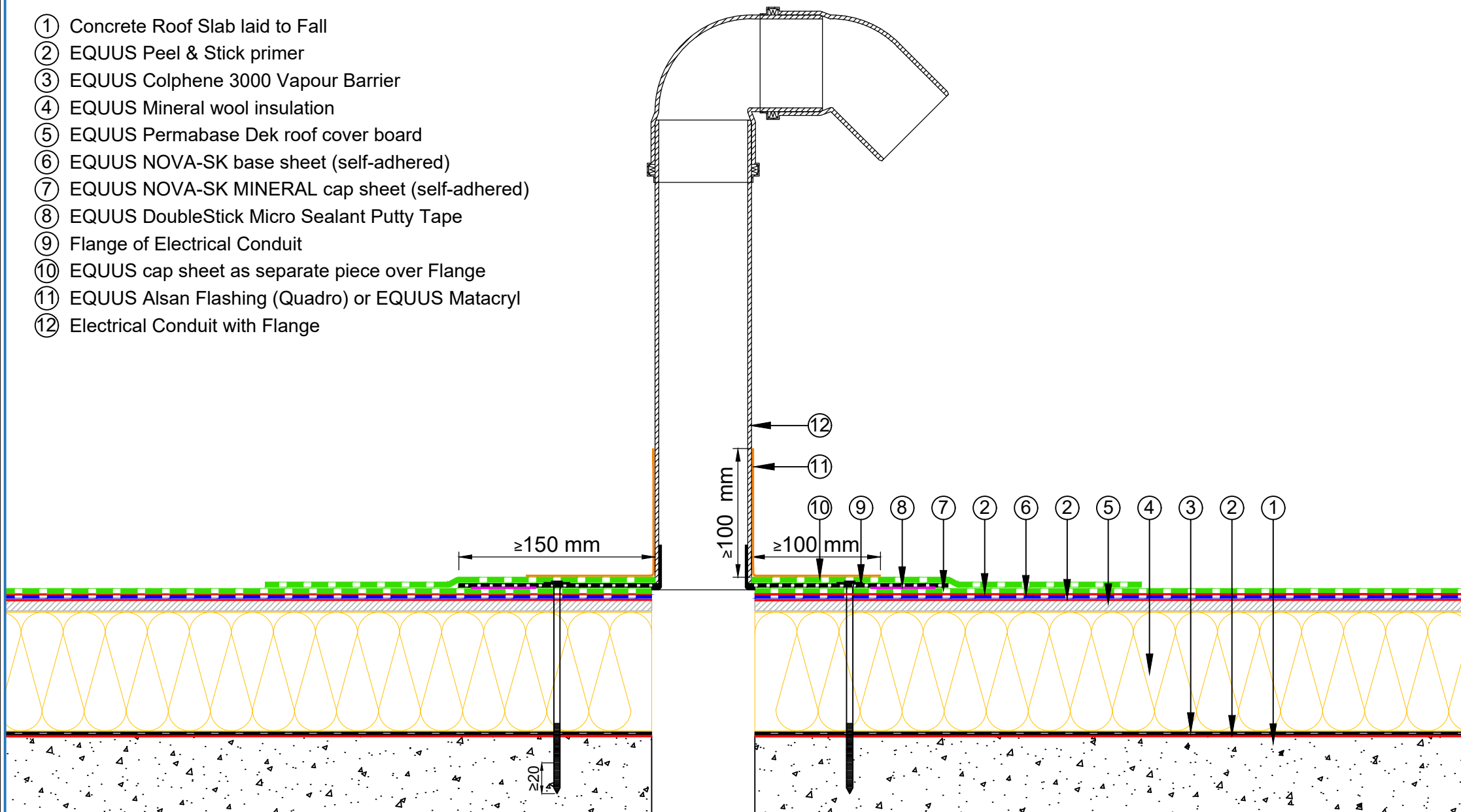


- ① Concrete Roof Slab laid to Fall
- ② EQUUS Peel & Stick primer
- ③ EQUUS Colphene 3000 Vapour Barrier
- ④ EQUUS Mineral wool insulation
- ⑤ EQUUS Permabase Dek roof cover board
- ⑥ EQUUS NOVA-SK base sheet (self-adhered)
- ⑦ EQUUS NOVA-SK MINERAL cap sheet (self-adhered)
- ⑧ EQUUS DoubleStick Micro Sealant Putty Tape
- ⑨ Flange of Electrical Conduit
- ⑩ EQUUS cap sheet as separate piece over Flange
- ⑪ EQUUS Alsan Flashing (Quadro) or EQUUS Matabryl
- ⑫ Electrical Conduit with Flange



E-mail : info@equus.nz
 Web : www.equus.co.nz

PROJECT : Warm Roof on Concrete Standard Detail - NOVA-SK FLAMELSS SYSTEM

TITLE : Electrical conduit with roof cover board (Mineral wool insulation)

NUMBER : SNWRCs-D6c

SCALE : NTS

DRAWN BY : NKT DATE : 28-Aug-2024

REVISED :

Equus Waterproof Membrane Details are specially drawn for use by Local Authorities, Building Contractors, Equus Applicators, Architects and design professionals. All details are drawn to assist in the development of project specific details. Details may be modified where necessary to accommodate job specific requirements but must be approved by Equus Industries Ltd. All components must be supplied by Equus Industries Ltd. Equus reserves the right to alter or upgrade details at any time without prior notice.



AUTHORISED DISTRIBUTOR
SOPREMA