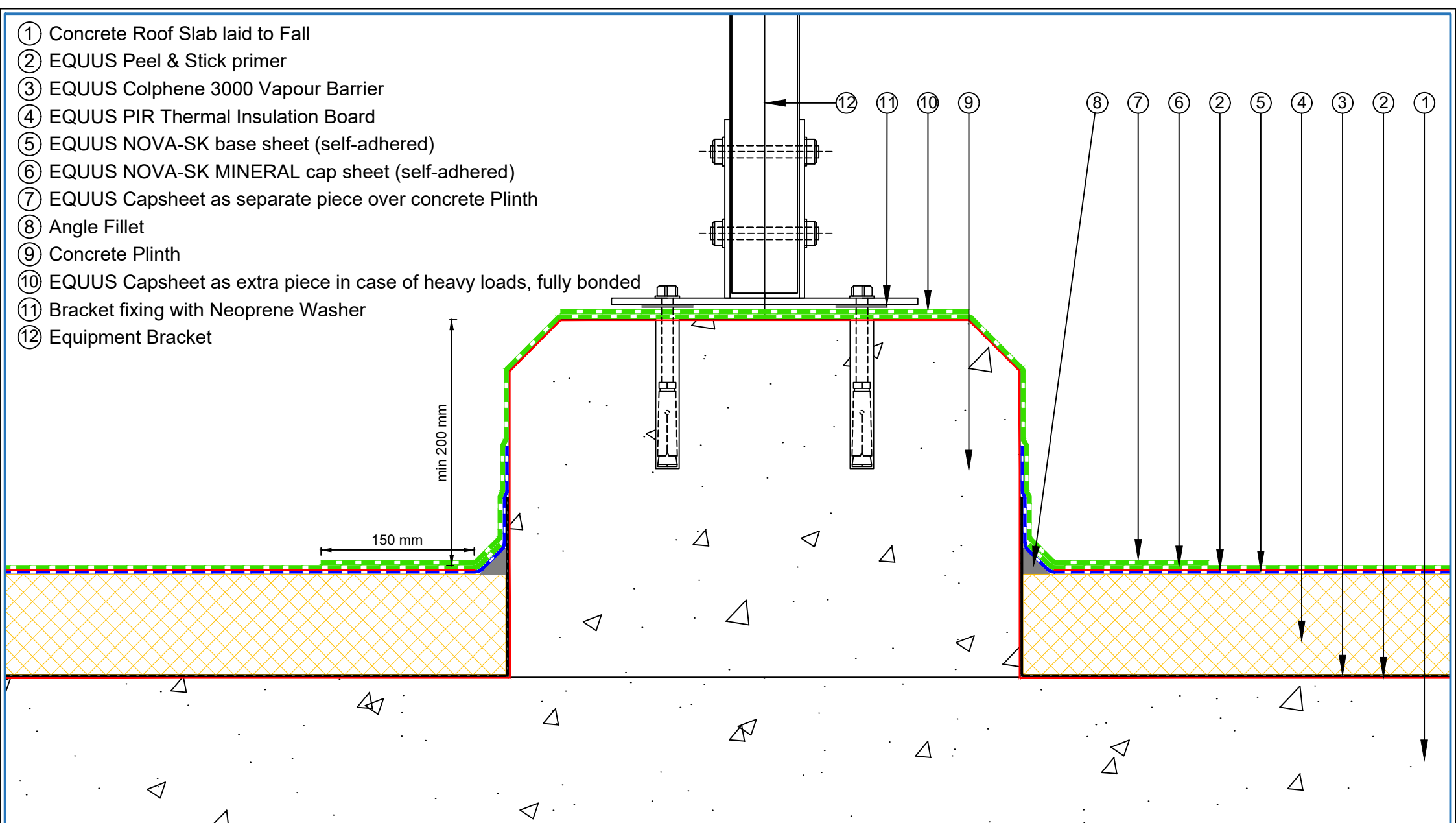


- ① Concrete Roof Slab laid to Fall
- ② EQUUS Peel & Stick primer
- ③ EQUUS Colphene 3000 Vapour Barrier
- ④ EQUUS PIR Thermal Insulation Board
- ⑤ EQUUS NOVA-SK base sheet (self-adhered)
- ⑥ EQUUS NOVA-SK MINERAL cap sheet (self-adhered)
- ⑦ EQUUS Capsheet as separate piece over concrete Plinth
- ⑧ Angle Fillet
- ⑨ Concrete Plinth
- ⑩ EQUUS Capsheet as extra piece in case of heavy loads, fully bonded
- ⑪ Bracket fixing with Neoprene Washer
- ⑫ Equipment Bracket



PROJECT :	Warm Roof on Concrete Standard Detail - NOVA-SK FLAMELSS SYSTEM				
TITLE :	Concrete Footing for Heavy Equipment (PIR insulation)				
NUMBER :	SNWRCs-D12a		SCALE :	NTS	
DRAWN BY :	NKT	DATE :	28-Aug-2024	REVISED :	

Equus Waterproof Membrane Details are specially drawn for use by Local Authorities, Building Contractors, Equus Applicators, Architects and design professionals. All details are drawn to assist in the development of project specific details. Details may be modified where necessary to accommodate job specific requirements but must be approved by Equus Industries Ltd. All components must be supplied by Equus Industries Ltd. Equus reserves the right to alter or upgrade details at any time without prior notice.

