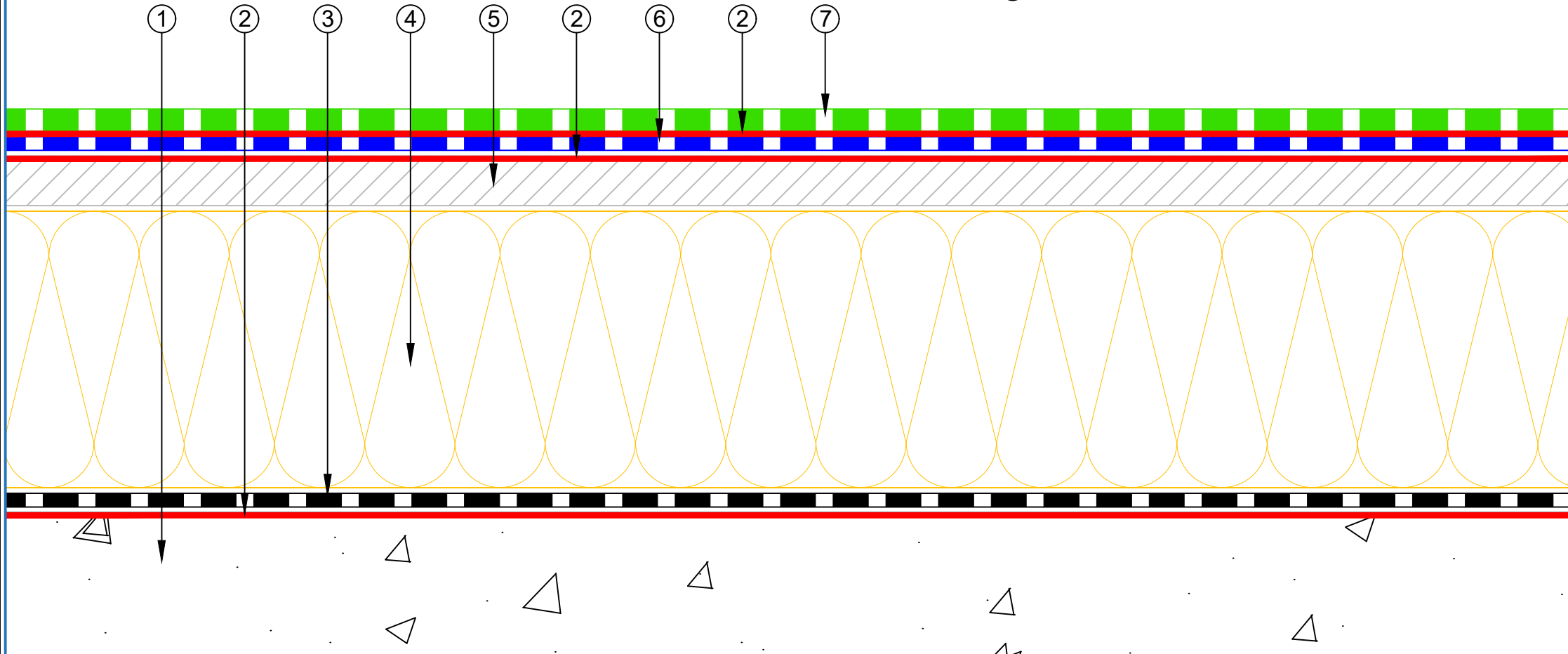


- ① Concrete Roof Slab laid to Fall
- ② EQUUS Peel & Stick primer
- ③ EQUUS Colphene 3000 Vapour Barrier
- ④ EQUUS SOPRAROCK mineral wool thermal insulation
- ⑤ EQUUS Permabase Dek roof cover board
- ⑥ EQUUS NOVA-SK base sheet (self-adhered)
- ⑦ EQUUS NOVA-SK MINERAL cap sheet (self-adhered)



| | | | |
|------------|--|-----------|-------------|
| PROJECT : | Warm Roof on Concrete Standard Detail - NOVA-SK FLAMELESS SYSTEM | | |
| TITLE : | Roof build up with Mineral wool insulation and Roof board | | |
| NUMBER : | SNWRCs-D0d | SCALE : | NTS |
| DRAWN BY : | NKT | DATE : | 28-Aug-2024 |
| | | REVISED : | |

Equus Waterproof Membrane Details are specially drawn for use by Local Authorities, Building Contractors, Equus Applicators, Architects and design professionals. All details are drawn to assist in the development of project specific details. Details may be modified where necessary to accommodate job specific requirements but must be approved by Equus Industries Ltd. All components must be supplied by Equus Industries Ltd. Equus reserves the right to alter or upgrade details at any time without prior notice.

