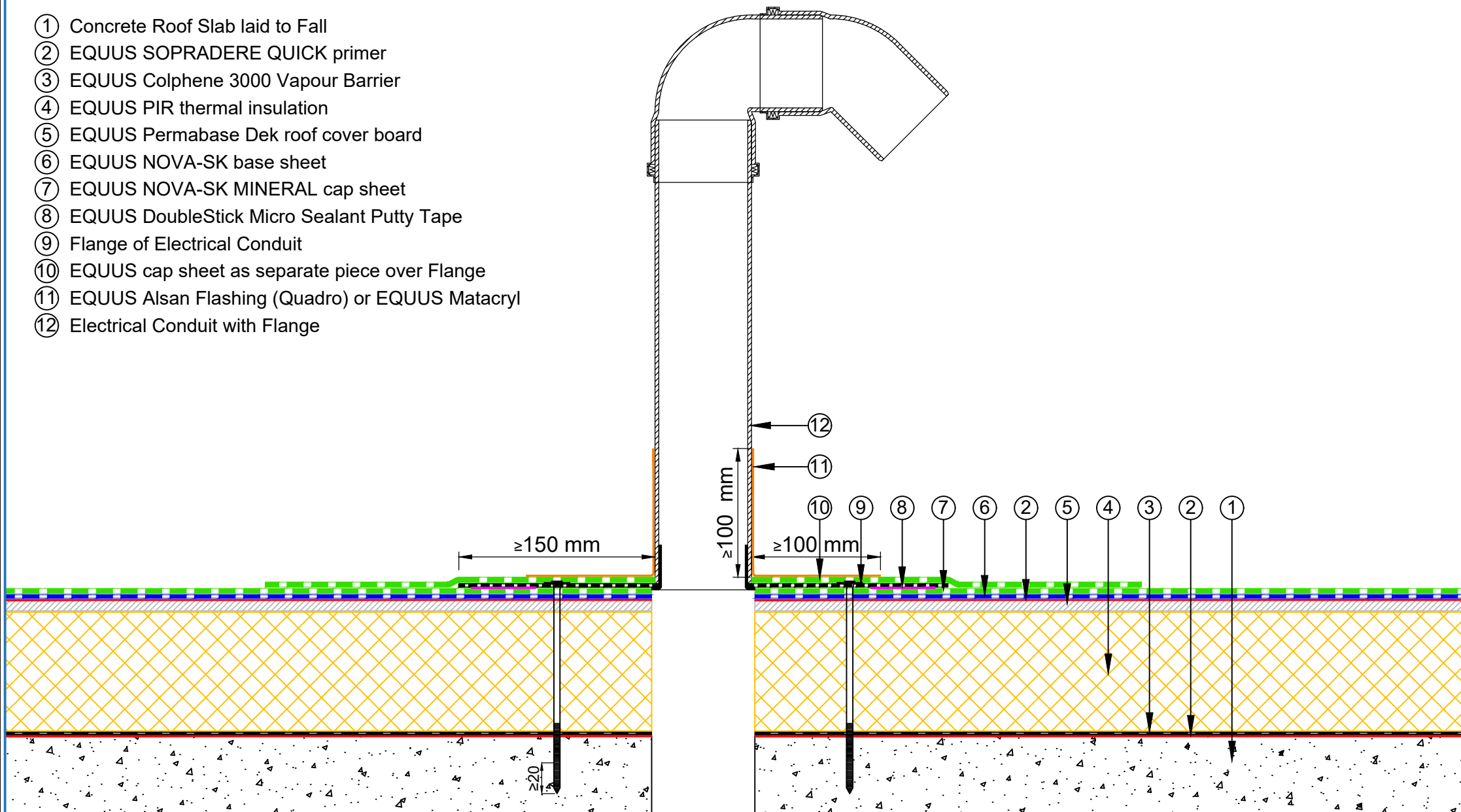


- ① Concrete Roof Slab laid to Fall
- ② EQUUS SOPRADERE QUICK primer
- ③ EQUUS Colphene 3000 Vapour Barrier
- ④ EQUUS PIR thermal insulation
- ⑤ EQUUS Permabase Dek roof cover board
- ⑥ EQUUS NOVA-SK base sheet
- ⑦ EQUUS NOVA-SK MINERAL cap sheet
- ⑧ EQUUS DoubleStick Micro Sealant Putty Tape
- ⑨ Flange of Electrical Conduit
- ⑩ EQUUS cap sheet as separate piece over Flange
- ⑪ EQUUS Alsan Flashing (Quadro) or EQUUS Matabryl
- ⑫ Electrical Conduit with Flange



E-mail : [admin@equus.nz](mailto:admin@equus.nz)  
 Web : [www.equus.nz](http://www.equus.nz)

|            |   |           |             |
|------------|---|-----------|-------------|
| PROJECT :  | Warm Roof on Concrete Standard Detail - NOVAGLASS         |           |             |
| TITLE :    | Electrical conduit with roof cover board (PIR insulation) |           |             |
| NUMBER :   | SNWRC-D6d   | SCALE :   | NTS         |
| DRAWN BY : | NKT   | DATE :    | 22-Nov-2022 |
|            |   | REVISED : |             |

Equus Waterproof Membrane Details are specially drawn for use by Local Authorities, Building Contractors, Equus Applicators, Architects and design professionals. All details are drawn to assist in the development of project specific details. Details may be modified where necessary to accommodate job specific requirements but must be approved by Equus Industries Ltd. All components must be supplied by Equus Industries Ltd. Equus reserves the right to alter or upgrade details at any time without prior notice.

