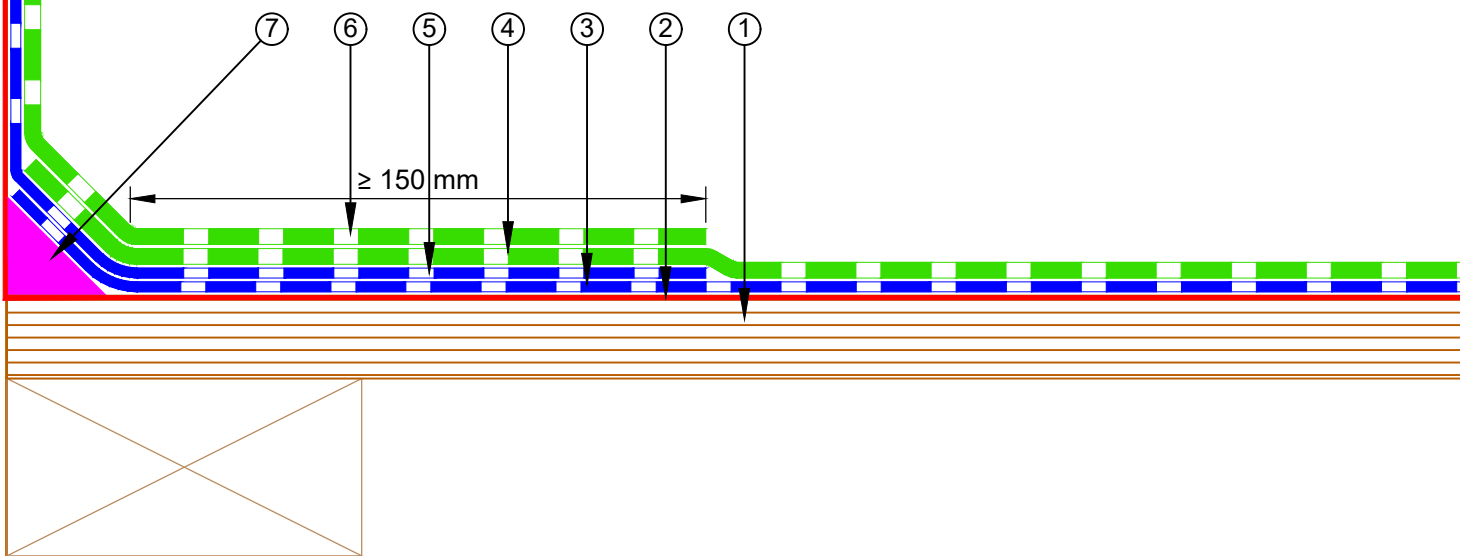


- ① Plywood Deck
- ② EQUUS Peel & Stick primer
- ③ EQUUS NOVA-SK base sheet (self-adhered)
- ④ EQUUS NOVA-SK MINERAL cap sheet
- ⑤ EQUUS base sheet, dressed to Parapet as separate piece
- ⑥ EQUUS cap sheet, dressed to Parapet as separate piece
- ⑦ EQUUS bitumen fillet or approved alternative
- ⑧ Cap Flashing by others



PROJECT :	Cold Roof on Plywood Standard Detail				
TITLE :	Parapet with cap flashing				
NUMBER :	SNCRP-D1a			SCALE :	1:2
DRAWN BY :	NKT	DATE :	09-Dec-2021	REVISED :	
<p><small>Equus Waterproof Membrane Details are specially drawn for use by Local Authorities, Building Contractors, Equus Applicators, Architects and design professionals. All details are drawn to assist in the development of project specific details. Details may be modified where necessary to accommodate job specific requirements but must be approved by Equus Industries Ltd. All components must be supplied by Equus Industries Ltd. Equus reserves the right to alter or upgrade details at any time without prior notice.</small></p>					

