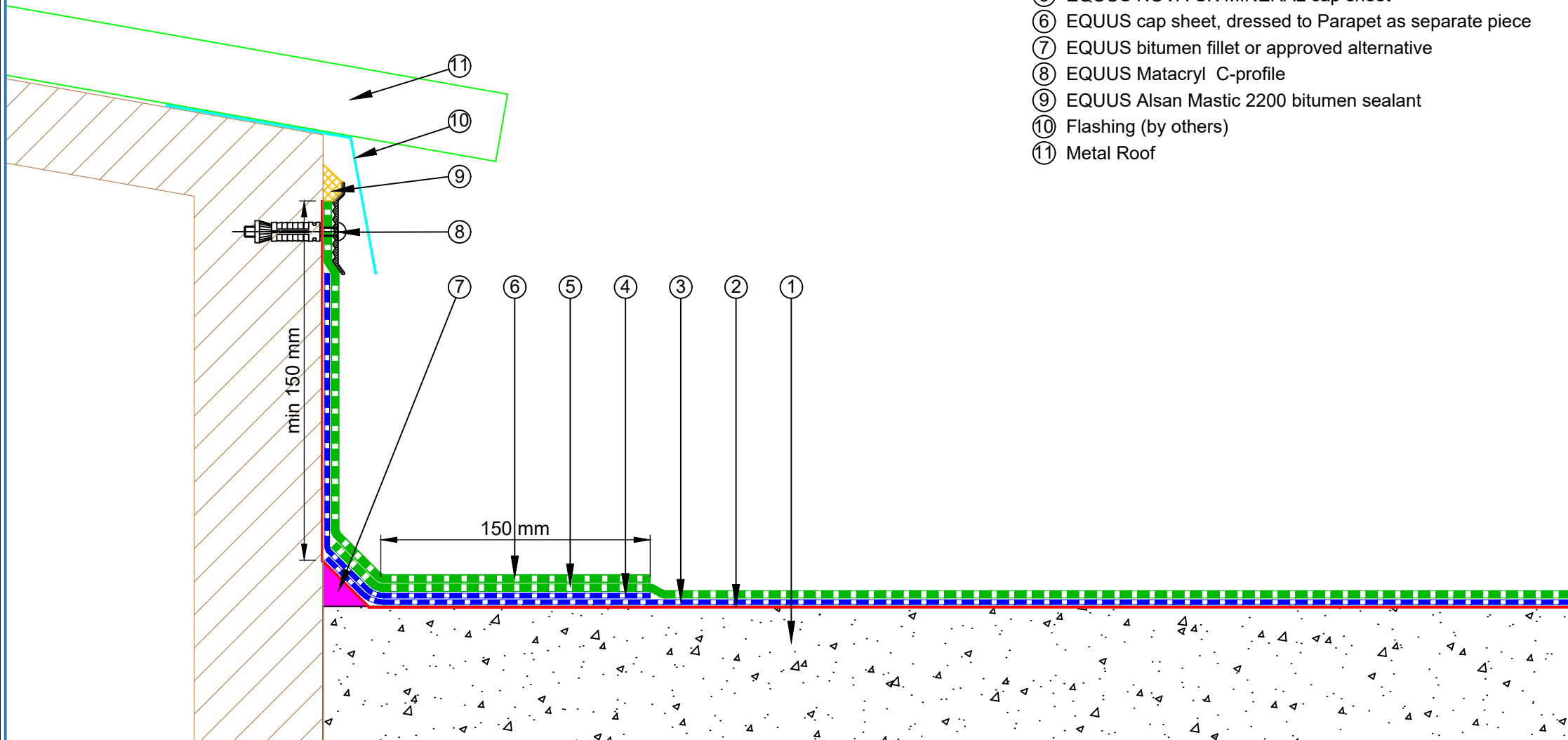


- ① Concrete Roof Slab / Screed laid to Fall
- ② EQUUS Peel & Stick primer
- ③ EQUUS NOVA-SK base sheet (self-adhered)
- ④ EQUUS base sheet, dressed to Parapet as separate piece
- ⑤ EQUUS NOVA-SK MINERAL cap sheet
- ⑥ EQUUS cap sheet, dressed to Parapet as separate piece
- ⑦ EQUUS bitumen fillet or approved alternative
- ⑧ EQUUS Maticryl C-profile
- ⑨ EQUUS Alsan Mastic 2200 bitumen sealant
- ⑩ Flashing (by others)
- ⑪ Metal Roof



PROJECT :	Cold Roof on Concrete Standard Detail		
TITLE :	Timber Upturn Termination		
NUMBER :	SNCRC-D1h	SCALE :	1:3
DRAWN BY :	NKT	DATE :	20-July-2022
		REVISED :	

Equus Waterproof Membrane Details are specially drawn for use by Local Authorities, Building Contractors, Equus Applicators, Architects and design professionals. All details are drawn to assist in the development of project specific details. Details may be modified where necessary to accommodate job specific requirements but must be approved by Equus Industries Ltd. All components must be supplied by Equus Industries Ltd. Equus reserves the right to alter or upgrade details at any time without prior notice.



E-mail : admin@equus.co.nz
 Web : www.equus.co.nz

