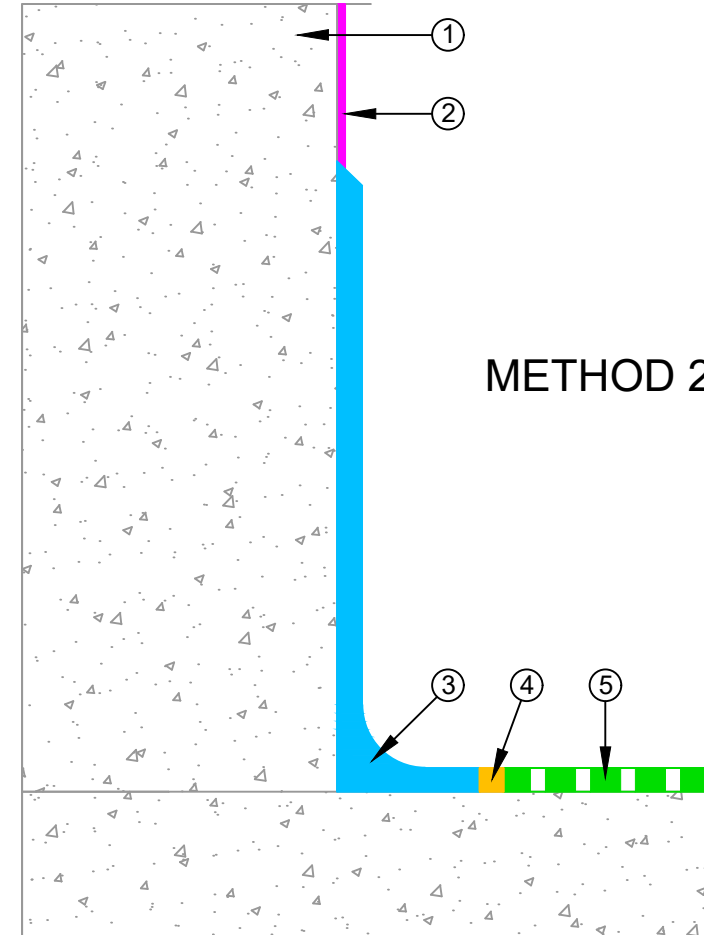
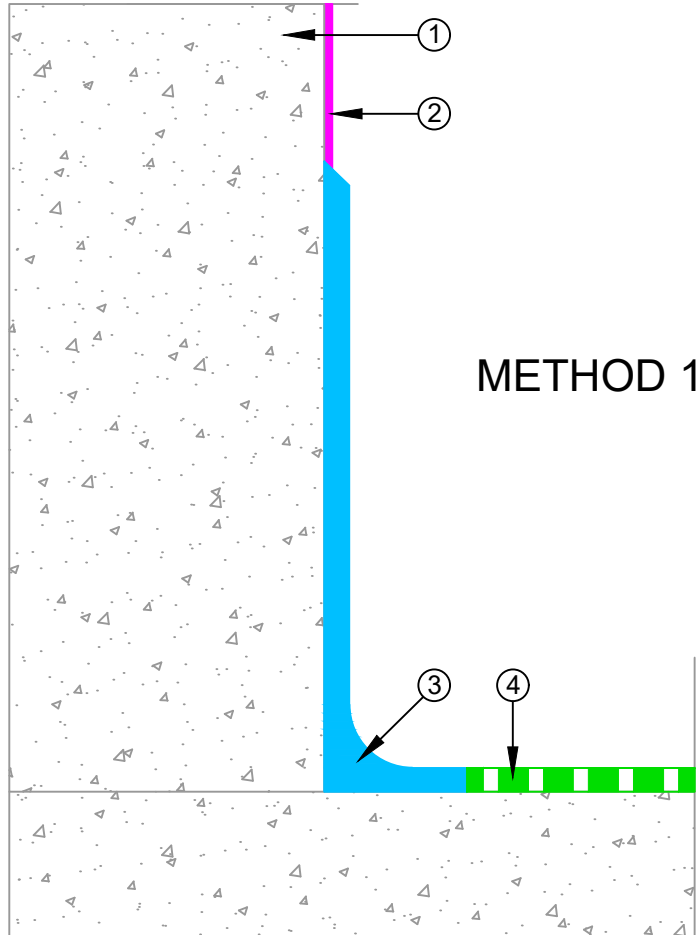


- ① Precast Concrete Wall
- ② Epistix Epoxy (wet areas) / Colourglaze (dry areas)
- ③ Monopur Cove, Height = 400mm, Radius 30-40mm
- ④ Monopur SL Flooring

- ① Precast Concrete Wall
- ② Epistix Epoxy (wet areas) / Colourglaze (dry areas)
- ③ Monopur Cove, Height = 400mm, Radius 30-40mm
- ④ Chase cold joint filled with Matacry LM or approved sealant
- ⑤ Monopur SL Flooring



E-mail : [info@equus.nz](mailto:info@equus.nz)  
 Web : [www.equus.nz](http://www.equus.nz)

|            |   |           |             |
|------------|---|-----------|-------------|
| PRODUCT :  | EQUUS Monopur SL Flooring to Concrete Substrate   |           |             |
| TITLE :    | Coves and connections to vertical surfaces detail |           |             |
| NUMBER :   | EMSL-D9a  | SCALE :   | NTS         |
| DRAWN BY : | NKT   | DATE :    | 16-Sep-2024 |
|            |   | REVISED : |             |

Equus standard details are especially drawn for use by Local Authorities, Building Contractors, Equus Applicators, Architects and design professionals. All details are drawn to assist in the development of project-specific details. Details may be modified where necessary to accommodate job-specific requirements but must be approved by Equus Industries Ltd. All components must be supplied by Equus Industries Ltd. Equus reserves the right to alter or upgrade details at any time without prior notice.